

SCHOOL DISTRICT OF LA CROSSE

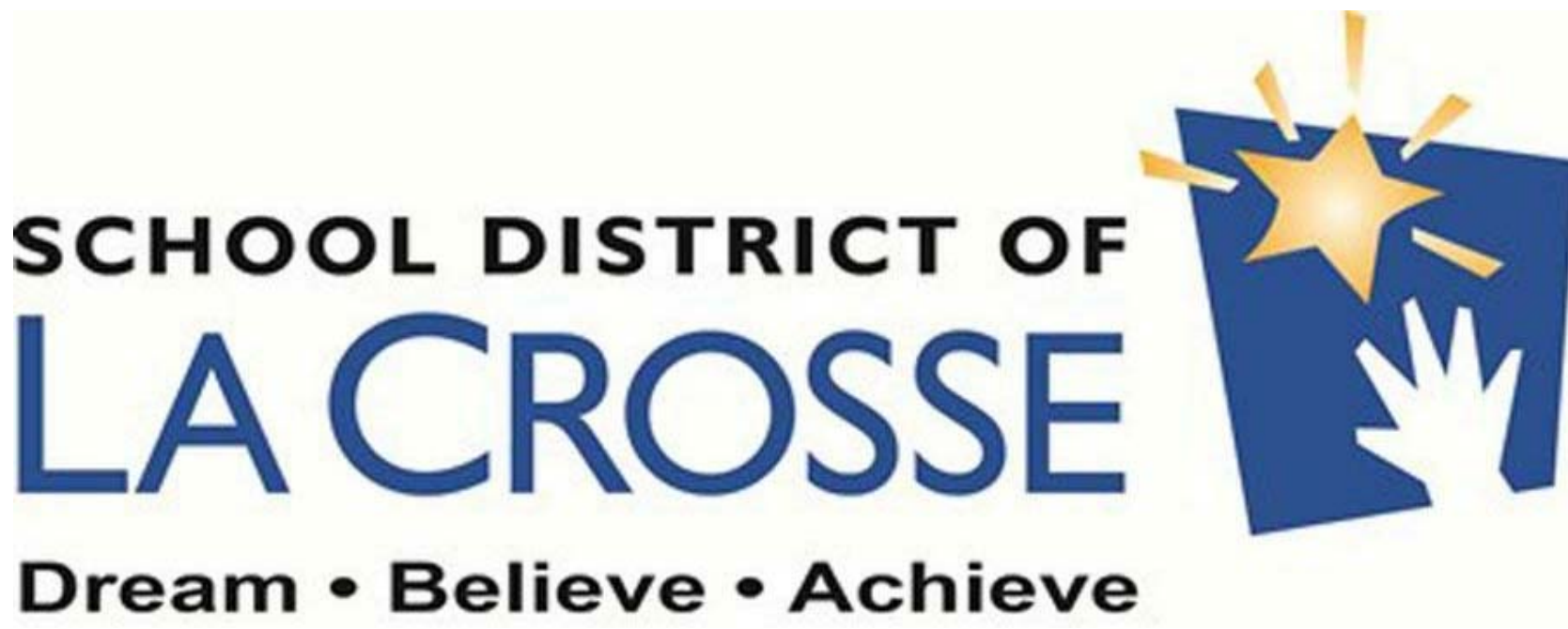
LONGFELLOW MIDDLE SCHOOL SECURE ENTRY

ADDITION AND REMODEL

1900 DENTON STREET LA CROSSE, WISCONSIN

HSR #16087

MAY 2017



ARCHITECTURE
ENGINEERING
INTERIOR DESIGN

HSR ASSOCIATES INC.
100 MILWAUKEE STREET
LA CROSSE, WISCONSIN
PHONE: 608.784.1830
FAX: 608.782.5844
WEB SITE: www.hsrassociates.com

Consultant:

INDEX OF DRAWINGS

GENERAL

A000 COVER SHEET
A001 EGRESS PLAN

STRUCTURAL

S001 STRUCTURAL NOTES
S110 FOUNDATION PLAN
S120 FRAMING PLAN/DETAILS

MECHANICAL

M090 HVAC REMOVAL PLAN
M100 HVAC REMODEL PLAN
M101 HVAC DETAILS AND SPECIFICATIONS PLAN

PROJECT TEAM

PROJECT MANAGER: DOUG RAMSEY
PROJECT ARCHITECT: DOUG RAMSEY
JOB CAPTAIN: JOSH DICKEY
SPECIFICATIONS: RON KNAPMILLER

INTERIOR DESIGNER: OLIVIA HAMMER

PLUMBING ENGINEER: CHRIS OLSON
GALILEO CONSULTING GROUP
608-787-9106

MECHANICAL ENGINEER: RAJ SHANKAR

ELECTRICAL ENGINEER: AMIN RAHIMI

STRUCTURAL ENGINEER: WAYNE VANDENBERGH
R.A. SMITH NATIONAL, INC.
608-421-5316

CONSTRUCTION ADMIN: MIKE BURGAZ

ARCHITECTURAL

A100 FIRST FLOOR REMODEL & REMOVAL PLANS
A110 REFLECTED CEILING & ROOF PLANS
A200 EXTERIOR ELEVATIONS
A210 INTERIOR ELEVATIONS
A300 BUILDING & WALL SECTIONS
A500 BUILDING DETAILS
A501 BUILDING DETAILS
A600 DOOR SCHEDULE
A601 WALL TYPES

PLUMBING

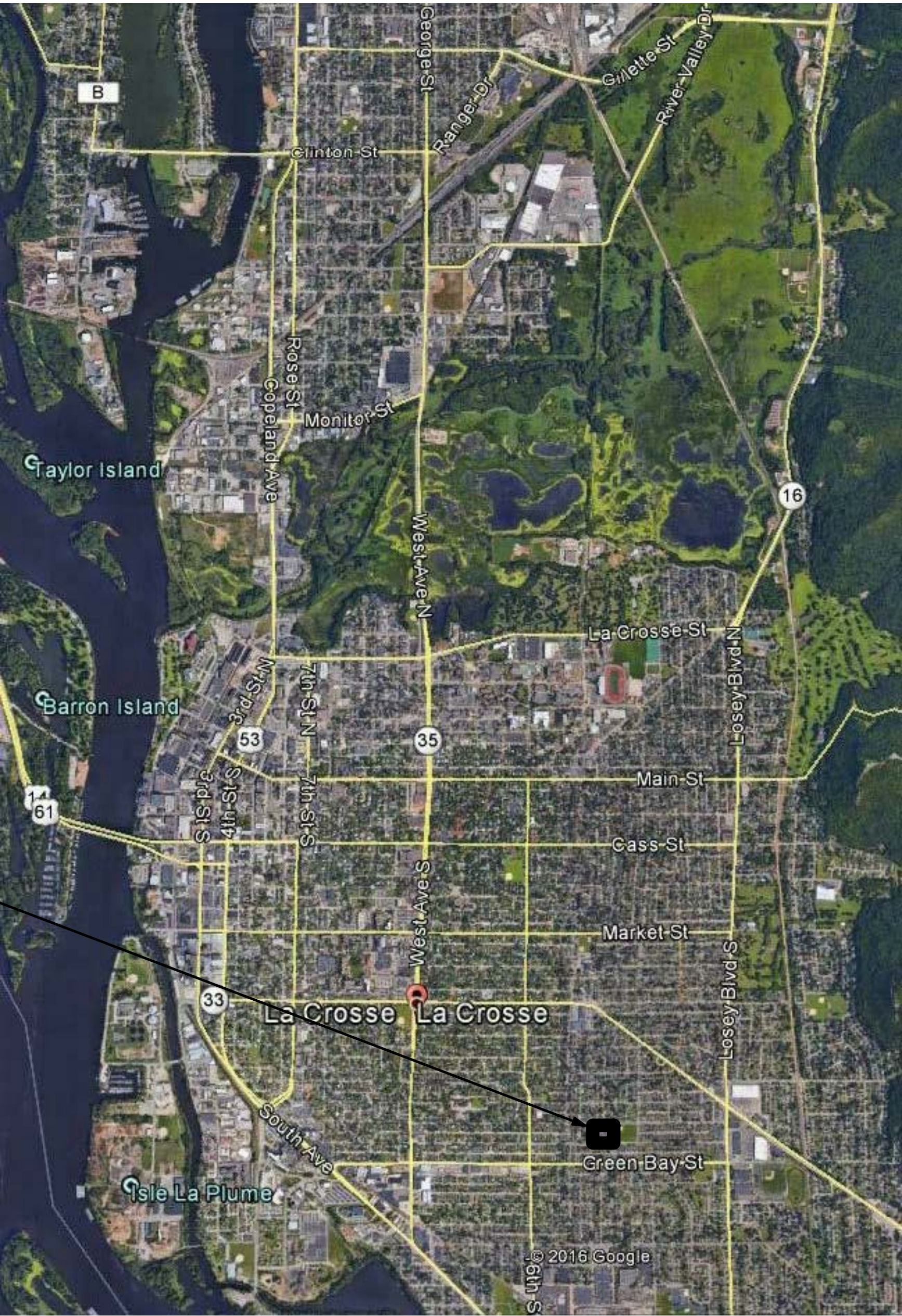
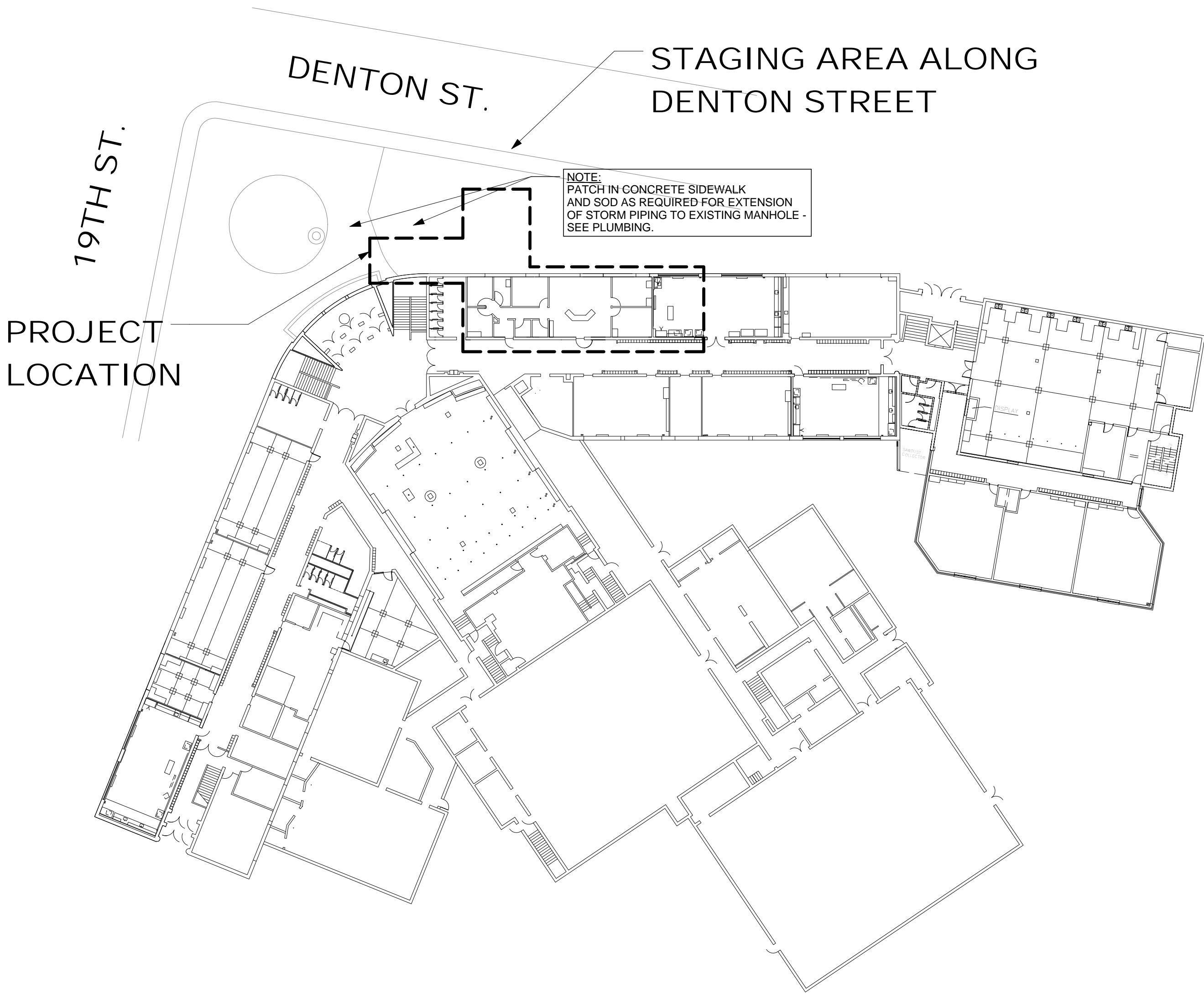
PD1 DEMOLITION FLOOR PLANS
P1 NEW WORK FLOOR PLANS

ELECTRICAL

E100 ELECTRICAL REMOVAL AND REMODEL POWER PLANS
E110 ELECTRICAL REMOVAL AND REMODEL LIGHTING PLANS

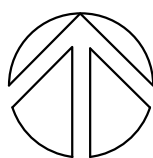
INTERIOR DESIGN

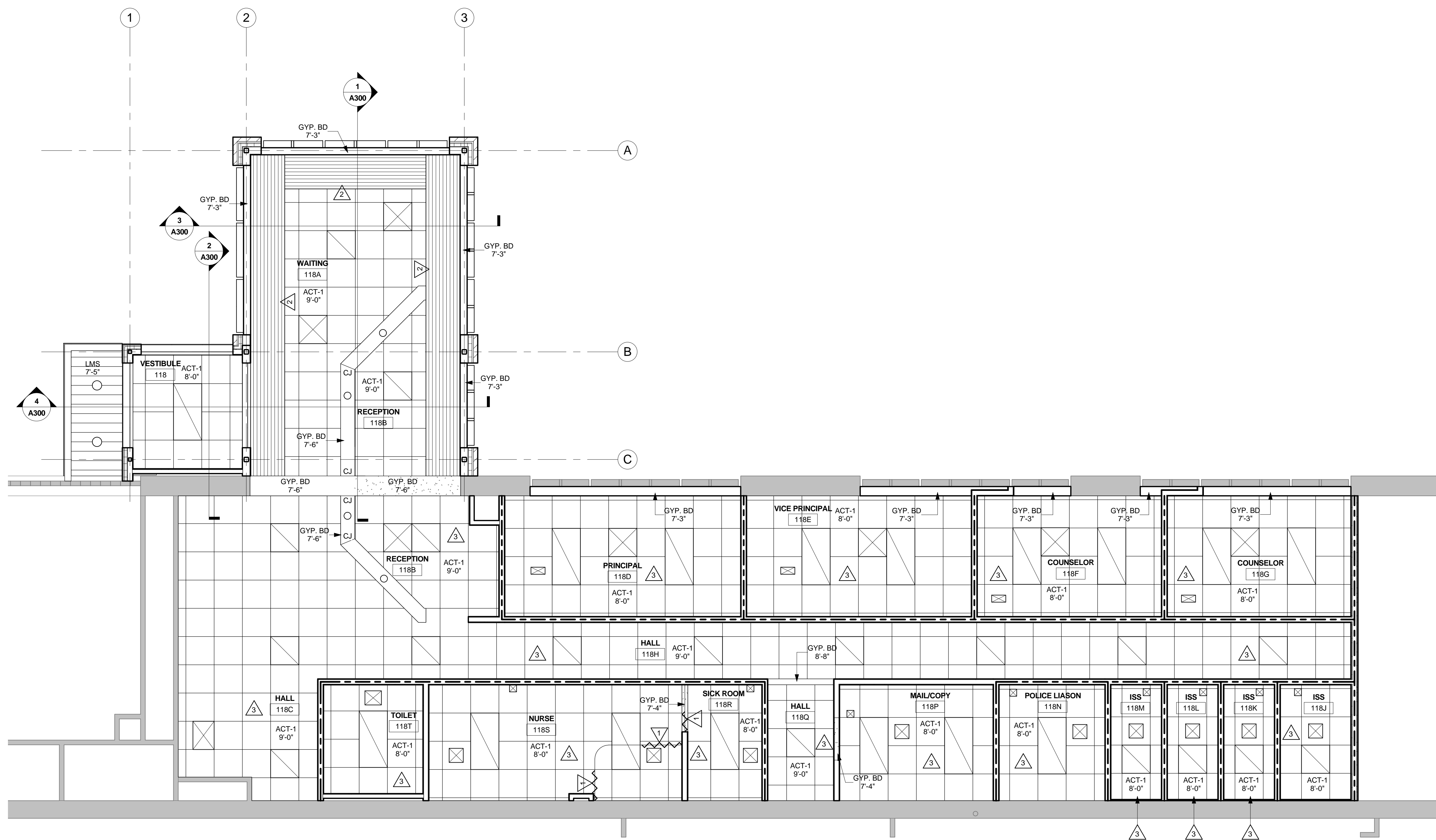
ID100 FINISH FLOOR PLAN



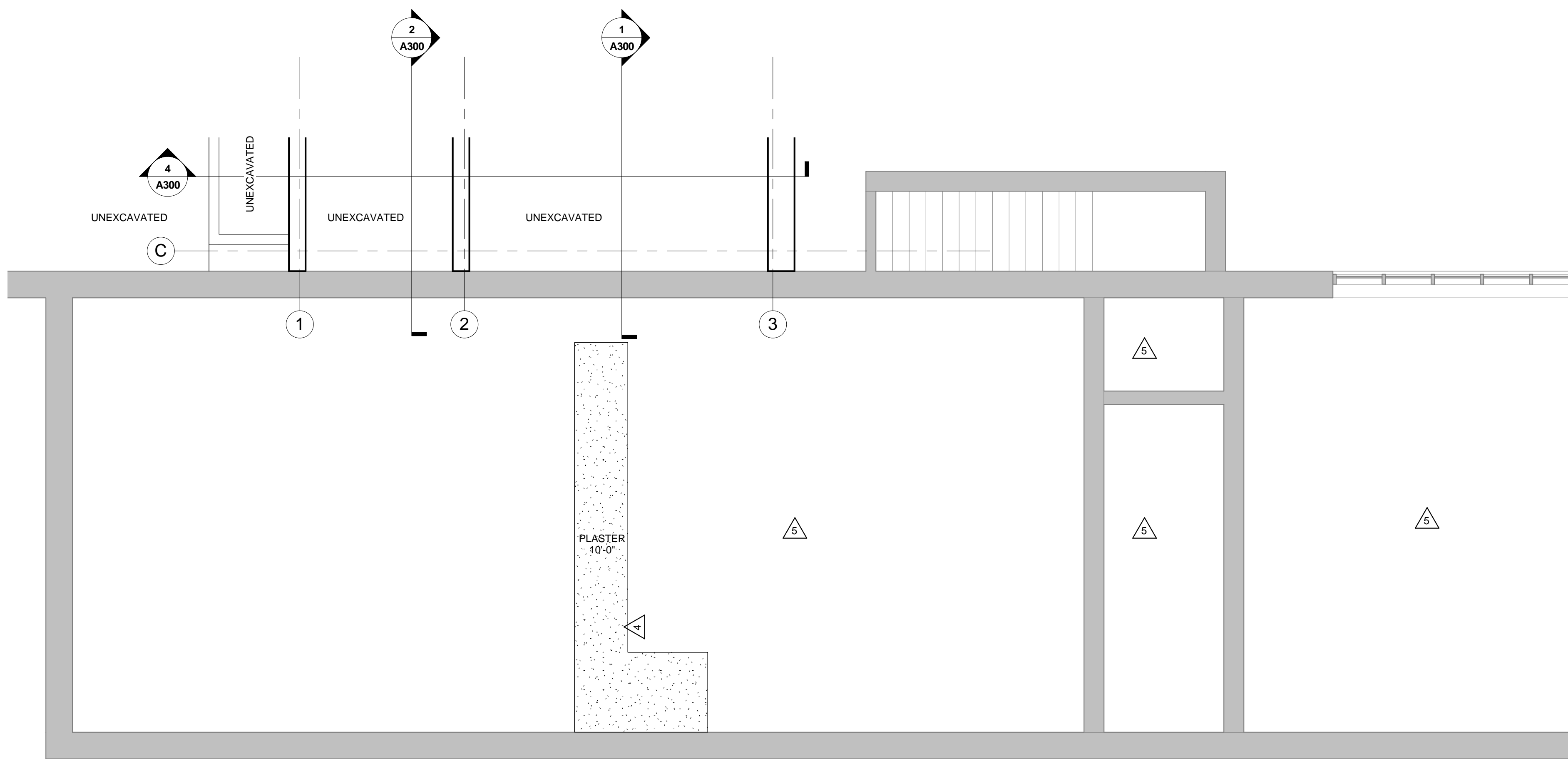
SCHOOL DISTRICT OF LA CROSSE
LONGFELLOW MIDDLE SCHOOL SECURE ENTRY
ADDITION AND REMODEL
1900 DENTON STREET LA CROSSE, WISCONSIN
COVER SHEET

Project Title:	Project Location:	Sheet Title:
HSR Project Number: 16087		
Project Date: MAY 2017		
Drawn By: J. DICKEY		
Key Plan:		
</		

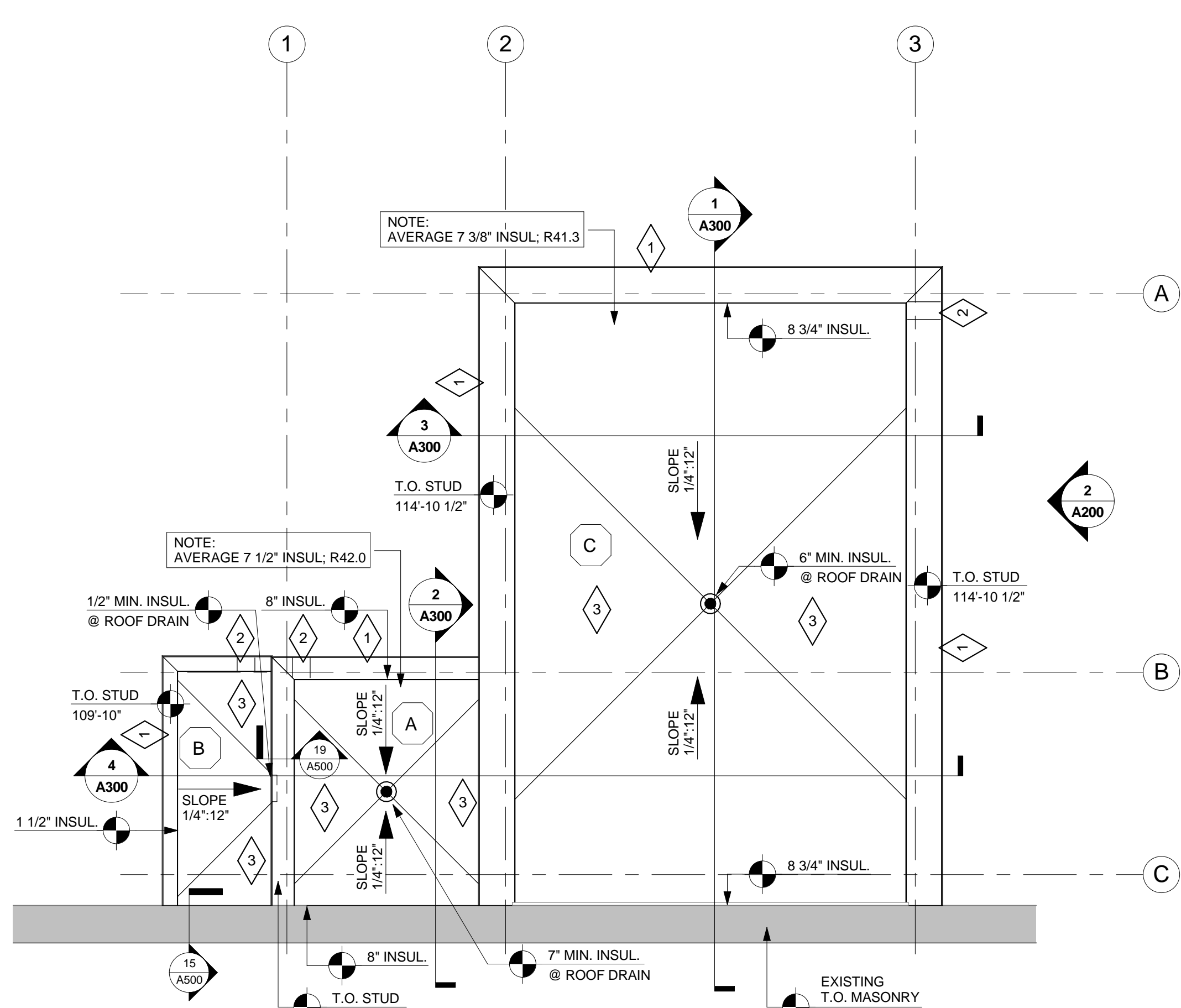


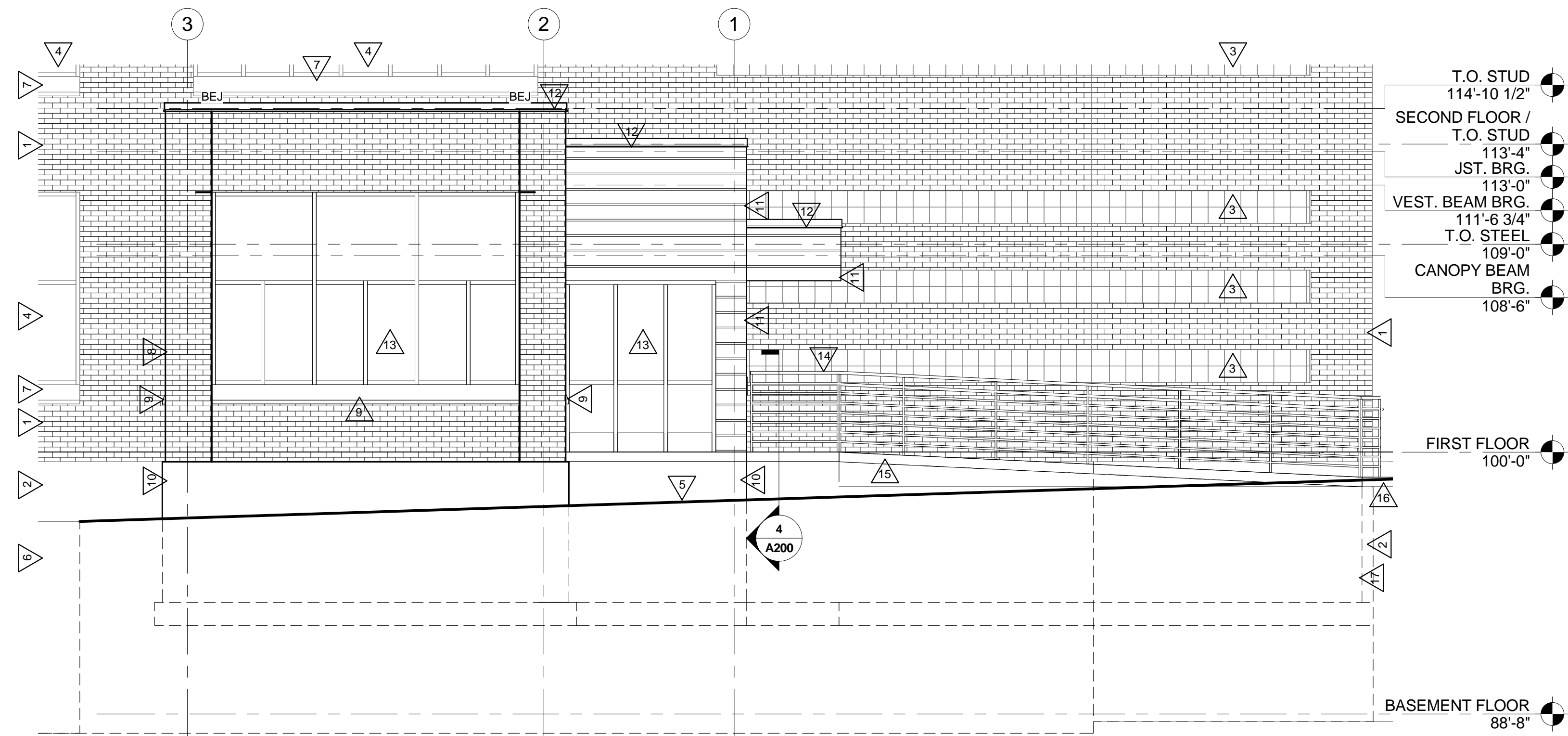


1 FIRST FLOOR REFLECTED CEILING PLAN
1/4" = 1'-0"

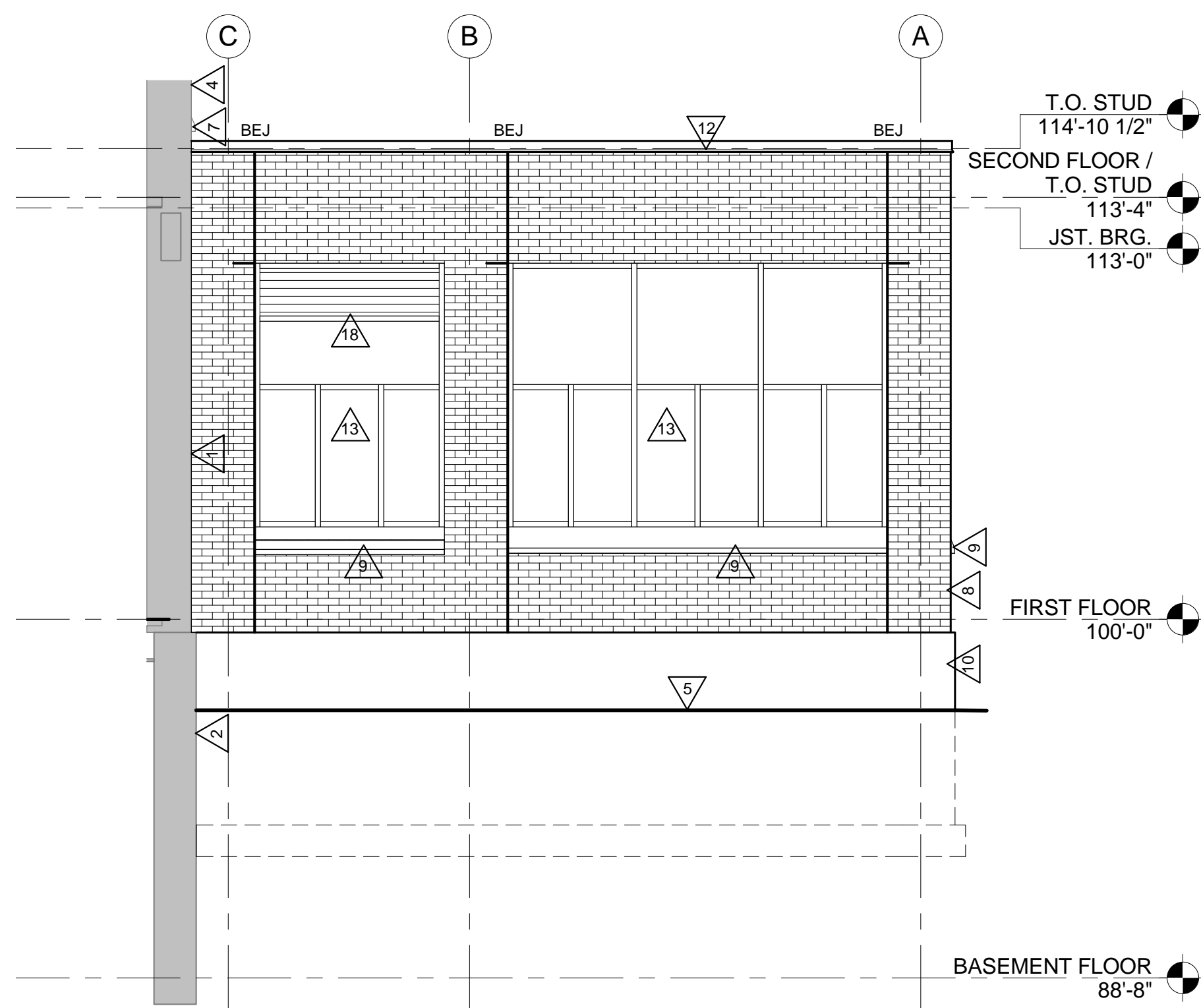


2 BASEMENT FLOOR REFLECTED CEILING PLAN
1/4" = 1'-0"

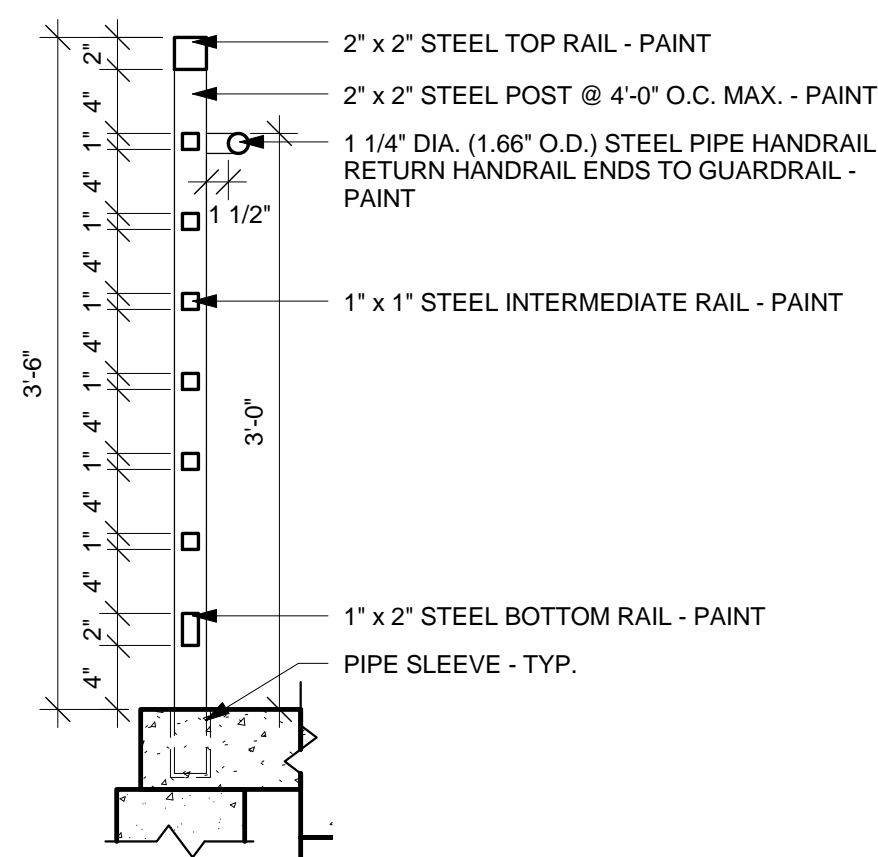




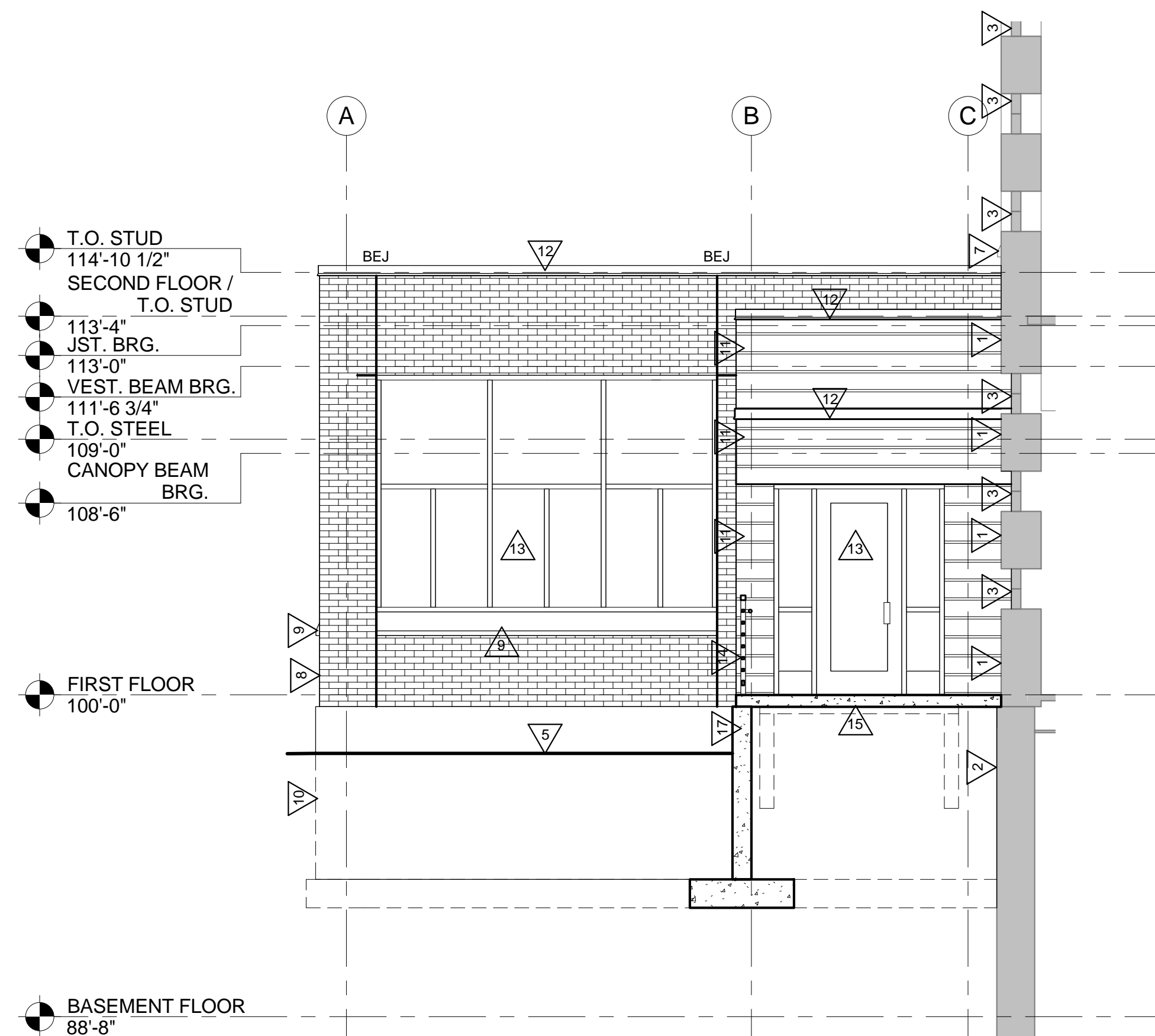
1 NORTH EXTERIOR ELEVATION
1/4" = 1'-0"



2 EAST EXTERIOR ELEVATION
1/4" = 1'-0"



4 RAILING DETAIL
1" = 1'-0"



3 WEST EXTERIOR ELEVATION
1/4" = 1'-0"

ELEVATION GENERAL NOTES:

- A SEE DETAILS A500 FOR BRICK EXPANSION JOINT (BEJ) INFORMATION.
- B BRICK COURSING: RUNNING BOND TYPICAL.
- C SEE SPECIFICATION FOR MATERIAL TYPE.
- D DESIGN INTENT IS FOR BRICK COURSING TO MATCH EXISTING - VERIFY.

ELEVATION LEGEND:

- △ SYMBOL INDICATES CONSTRUCTION NOTE THIS SHEET.
- WINDOW TAG, SEE SHEET A601 FOR FRAME ELEVATIONS
- BCJ BRICK VENEER CONTROL JOINT - SEE DETAILS A510

ELEVATION KEY NOTES

- EXISTING FACE BRICK.
- EXISTING CONCRETE FOUNDATION WALL AND FOOTING.
- EXISTING GLASS BLOCK.
- EXISTING ALUMINUM WINDOW SYSTEM.
- EXISTING GRADE.
- EXISTING CONCRETE AREA WELL AND STAIRS.
- EXISTING STONE SILL.
- NEW FACE BRICK - MATCH EXISTING. ROW LOCK EVERY SIXTH COURSE - MATCH EXISTING.
- NEW CAST STONE SILL - MATCH EXISTING.
- NEW CONCRETE FOUNDATION WALL AND FOOTING - RUB EXPOSED CONC. FDN. SMOOTH IMMEDIATELY UPON FORM REMOVAL.
- NEW METAL PANEL.
- NEW PRE-FINISHED METAL CAP FLASHING.
- NEW ALUMINUM STOREFRONT SYSTEM.
- NEW GUARDRAIL/HANDRAIL SYSTEM - PAINT.
- NEW CONCRETE RAMP.
- NEW CONCRETE SIDEWALK.
- NEW CONCRETE RETAINING WALL.
- NEW PRE-FINISHED ALUMINUM LOUVER.

ARCHITECTURE
ENGINEERING
INTERIOR DESIGN

HSR ASSOCIATES INC.
100 MILWAUKEE STREET
LA CROSSE, WISCONSIN
PHONE: 608.784.1830
FAX: 608.782.5844
WEB SITE: www.hsrassociates.com

Consultant:

SCHOOL DISTRICT OF LA CROSSE
LONGFELLOW MIDDLE SCHOOL SECURE ENTRY
ADDITION AND REMODEL

Project Title:

HSR Project Number:
16087

Project Date:
MAY 2017

Drawn By:
J. DICKEY

Key Plan:

Project Location: 1900 DENTON STREET LA CROSSE, WISCONSIN

Sheet Title:
EXTERIOR ELEVATIONS

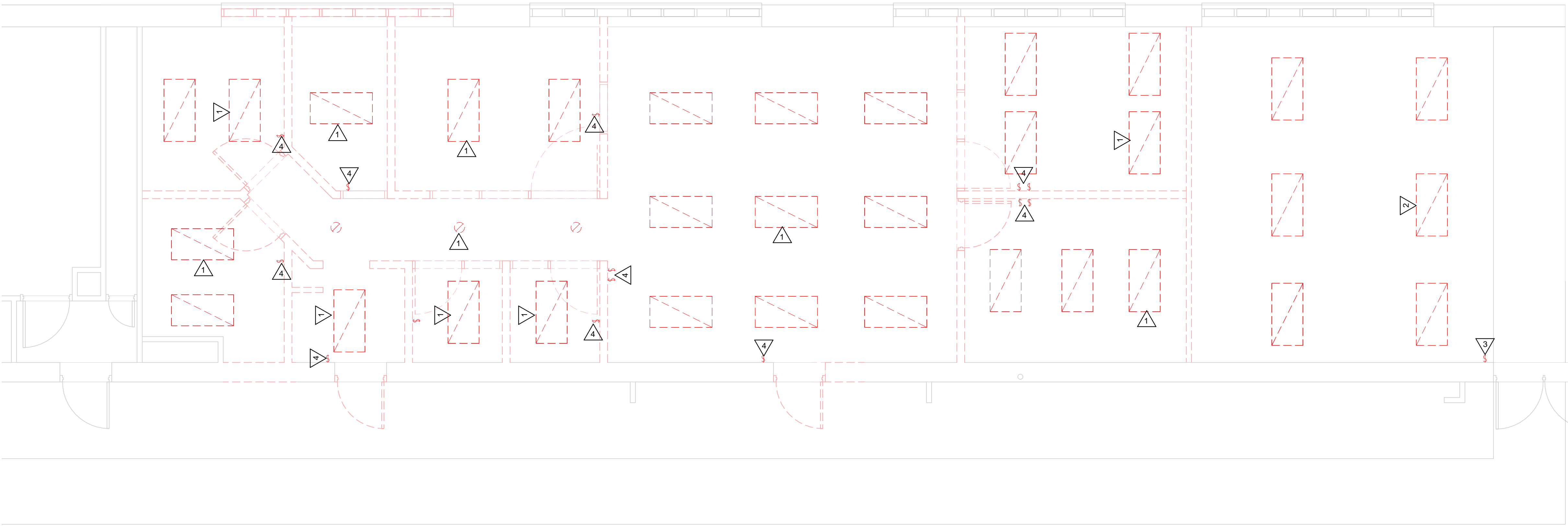
Revisions:

No.	Description	Date

Graphic Scale:
VARIES

Last Update:
5/26/2017 10:53:34 AM

A200



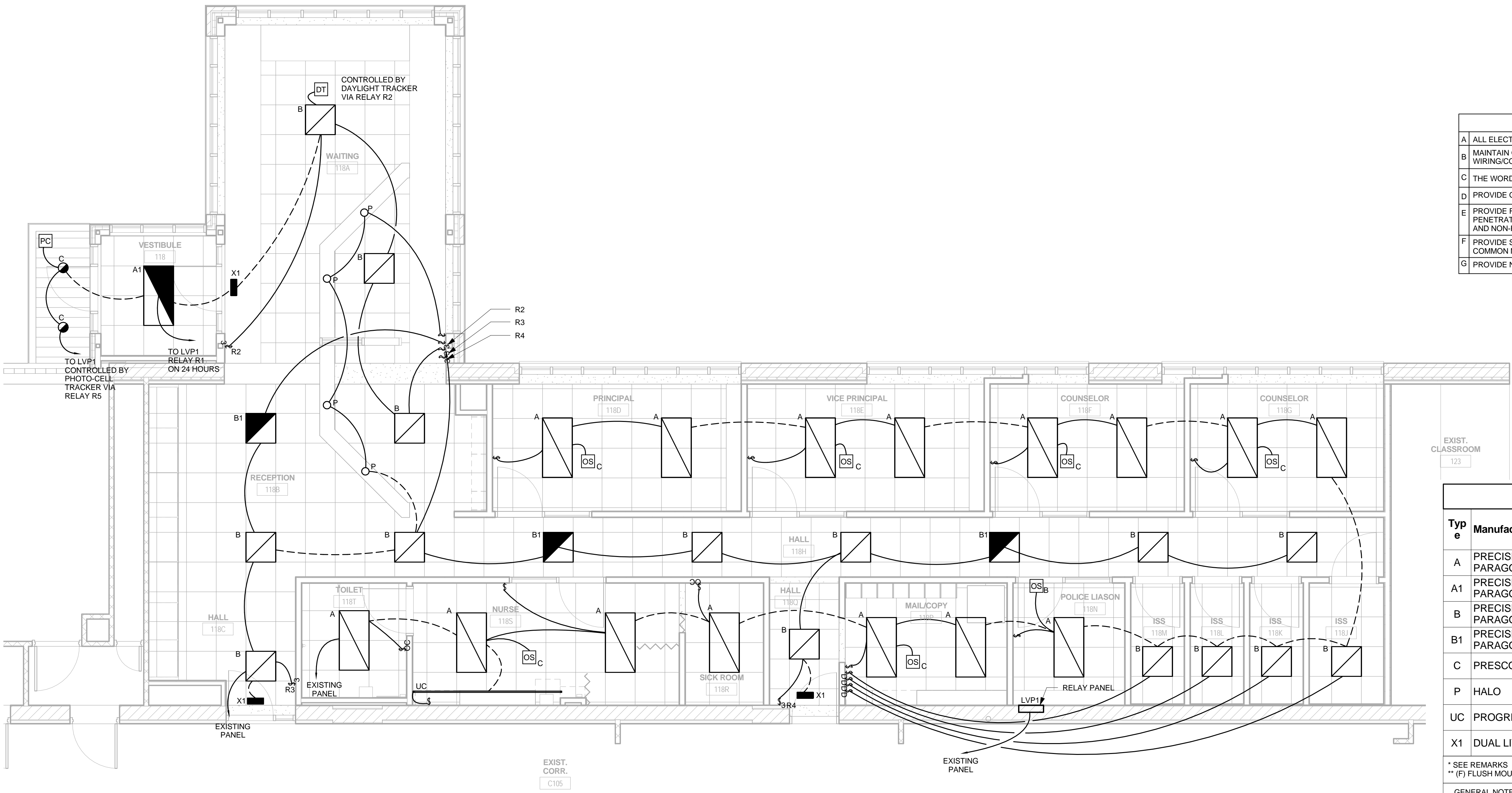
- GENERAL NOTES REMOVAL**
- A REMOVE ALL ELECTRICAL DEVICES SHOWN AND ABANDONED WIRING/CONDUIT BACK TO ELECTRICAL PANEL, CABINET, OR TERMINATION BOARD, UNLESS OTHERWISE NOTED.
 - B ELECTRICAL CONTRACTOR TO FIELD VERIFY REMOVAL OF ALL DEVICES IN WALLS TO BE REMOVED.
 - C ELECTRICAL CONTRACTOR SHALL REMOVE AND DISPOSE OF ALL EXISTING LIGHTING FIXTURES IN AREA OF WORK UNLESS OTHERWISE NOTED.
 - D ELECTRICAL CONTRACTOR SHALL EXTEND ALL CONDUIT AND WIRING OF ALL RELOCATED ITEMS.
 - E PROVIDE A STAINLESS STEEL BLANK COVER PLATE ON ANY UNUSED BOXES.
- SYMBOL INDICATES REMOVAL NOTE THIS SHEET.
- DASHED LINES REPRESENT ITEMS FOR REMOVAL, DISPOSE COMPLETELY UNLESS NOTED FOR SALVAGE/REUSE
- GRAY LINES REPRESENT ITEMS TO REMAIN.

- KEY NOTES REMOVAL LIGHTING PLAN**
- 1 REMOVE THE EXISTING LIGHTING FIXTURE, REMOVE ALL ASSOCIATED CONDUIT AND CABLEWIRING, TYPICAL.
 - 2 IN THIS ROOM, CENTRAL LAMP IS IN ALL FIXTURES ON ONE SWITCH AND OUTSIDE LAMPS ARE IN OTHER SWITCH, REMOVE EXISTING FIXTURES, AND REWIRE THE REST OF FIXTURE.
 - 3 THIS SWITCH CONTROL CENTRAL LAMP OF ALL FIXTURES IN THE ROOM, REMOVE AND REINSTALL SWITCH, REWIRE THE REST OF EXISTING LIGHTING FIXTURES.
 - 4 REMOVE EXISTING SWITCH(ES), REMOVE ALL ASSOCIATED CONDUIT AND CABLEWIRING.
 - 5 THIS SWITCH CONTROL OUTSIDE LAMPS OF ALL FIXTURES IN THE ROOM, EXISTING SWITCH TO REMAIN, REWIRE THE REST OF EXISTING LIGHTING FIXTURES.

- ELECTRICAL SYMBOLS**
- PENDING LIGHTING FIXTURE
 - LIGHTING FIXTURE DOWNLIGHT- RECESSED *
 - LIGHTING FIXTURE (2'x4') - RECESSED *
 - LIGHTING FIXTURE (2'x4') - EMERGENCY CIRCUIT/BATTERY, BODINE #B50ST *
 - LIGHTING FIXTURE (2'x2') - RECESSED *
 - LIGHTING FIXTURE (2'x2') - EMERGENCY CIRCUIT/BATTERY, BODINE #B50ST *
 - EXIT/ AREA OF RESCUE ASSISTANCE SIGN
 - OCCUPANCY SENSOR *
 - PHOTOCELL CONTROLLER
 - PHOTOCELL CONTROLLER
 - SWITCH - SINGLE POLE
 - 3 - 3-WAY SWITCH
 - D - DIMMING SWITCH
 - OC - OCCUPANCY SWITCH
 - SC - SPEED CONTROL SWITCH
 - R2 - LOW VOLTAGE RELAY ***
 - LEG TO PANEL
 - NOTE NUMBER (REMOVAL)
 - NOTE NUMBER (REMODEL)
- * TYPE AS INDICATED WITH LETTER/NUMBER, REFER TO SPECIFICATIONS, AND LOCATIONS AS INDICATED ON DRAWINGS.
- *** NUMBER REFERS TO LOW VOLTAGE LIGHTING RELAY, REFER TO SCHEDULE.
- ** QUANTITIES OF CABLE DROPS AS INDICATED WITH NUMBER, REFER TO DRAWINGS, HEIGHTS

1 FIRST FLOOR REMOVAL

1/4" = 1'-0"



- GENERAL NOTES LIGHTING:**
- A ALL ELECTRICAL DEVICES SHOWN TO BE NEW, UNLESS INDICATED OTHERWISE.
 - B MAINTAIN OPERATION OF ALL EXISTING ELECTRICAL DEVICES, EXTEND WIRING/CONDUIT TO LIGHTS.
 - C THE WORD "PROVIDE" MEANS TO FURNISH AND INSTALL.
 - D PROVIDE GROUND CONDUCTOR IN ALL NEW CONDUITS.
 - E PROVIDE FIRE STOPPING AND SMOKE DRAFT STOPPING AT ALL CONDUIT PENETRATIONS. REFER TO SPECIFICATION SECTION 07840 FOR FIRE RESISTIVE AND NON-FIRE RESISTIVE ASSEMBLIES.
 - F PROVIDE SEPARATE NEUTRAL CONDUCTORS FOR EACH BRANCH CIRCUIT. (NO COMMON NEUTRALS)
 - G PROVIDE NEW CIRCUIT BREAKERS IN EXISTING PANEL.

LOW VOLTAGE LIGHTING RELAY SHEDULE			
PANEL LVP1, POLICE LIASON 118N			
RELAY NUMBER	ROOM NUMBER(S) SERVED	LAMPS CONTROLLED	REMARKS
R1	VESTIBULE-118	TYPE "A1" FIXTURES	1
R2	RECEPTION 118B	TYPE "B,B1" FIXTURES	2
R3	WAITING 118A	TYPE "B,B1" FIXTURES	2
R4	HALL 118H	TYPE "B,B1" FIXTURES	2
R5	EXTERIOR LIGHTS	TYPE "C" FIXTURES	3
R6	SPARE		
R7	SPARE		
REMARKS			
1. ON 24 HOURS.			
2. RELAYS MAYBE CONTROLLED FROM MULTIPLE SWITCH LOCATIONS, REFER TO DRAWINGS FOR LOCATIONS AND QUANTITIES.			
3. CONTROL BY PHOTO ONTIME CLOCK OFF.			

Lighting Fixture Schedule										
Type	Manufacturer	Catalog	Description	Voltage	Mounting F S P O	NO	Watt	Lamp	Remark Number	
A	PRECISION PARAGON	RJT24-40XWG-FSA12-EU	2'x4' SPECIFICATION PREMIUM STATIC TROFFER,	UNV	X	15	20	LED 4000K		
A1	PRECISION PARAGON	RJT24-40XWG-FSA12-EU-ELL14	2'x4' SPECIFICATION PREMIUM STATIC TROFFER,	UNV	X	1	20	LED 4000K		
B	PRECISION PARAGON	RJT22-40MWG-FSA12-EU	2'x2' SPECIFICATION PREMIUM STATIC TROFFER,	UNV	X	15	18	LED 4000K		
B1	PRECISION PARAGON	RJT22-40MWG-FSA12-EU-ELL14	2'x2' SPECIFICATION PREMIUM STATIC TROFFER,	UNV	X	3	18	LED 4000K		
C	PRESCOLITE	LF4LEDG4-4LFLED5G4-40K-WFL45-E MR	4" LED DOWNLIGHT	UNV	X	2	14	LED 4000K		
P	HALO	H2SCNAH-MR16-WH	PENDANT WITH FIELD ADJUSTABLE CORD.	120/12V	X	4	10	PHILLIPS 10MR16 LED 3000K		
UC	PROGRESS LIGHT	P7041-30	LED 5' TAPE LIGHTING UNDERCABINET	24V	X	1	15	LED 3000K		
X1	DUAL LITE	LXURWEI - EMERGENCY BATTERY	SINGLE FACE EXIT LIGHT	UNV	X	3	3.8	LED 4000K		

- * SEE REMARKS
- ** (F) FLUSH MOUNT; (S) SURFACE MOUNT; (P) PENDANT HUNG; (O) OTHER-SEE REMARKS IN REGARDS TO FIXTURE MOUNTING.
- GENERAL NOTE:**
- A. ALL LIGHTING FIXTURES WITH T-8 LAMPS OR COMPACT FLUORESCENT LAPS SHALL BE FURNISHED WITH ELECTRONIC BALLASTS, SEE SPECIFICATIONS FOR FURTHER INFORMATION REGARDING ELECTRONIC BALLASTS.
- B. FOR EMERGENCY FIXTURE USE BATTERY PACK.

- LIGHTING FIXTURE SCHEDULE REMARKS:**
1. FOR 4 LIGHTING FIXTURES WHICH ARE LOCATED IN ISS ROOMS, PROVIDE WITH 0-10V DIMMING.
 2. WHITE GLASS PENDANT, LED MR16 LAMP, FIELD ADJUSTABLE SUSPENSION CORD.
 3. LED STRIP LENGTH WILL MATCH WITH CABINET, PROVIDE A TRANSFORMER P8683-31, COORDINATE WITH ARCHITECTS.
- EQUAL FIXTURES:**
- a. FIXTURES EQUAL IN ALL RESPECTS TO THE SPECIFIED FIXTURES MANUFACTURED BY COOPER LIGHTING, LITHONIA, COLUMBIA, HUBBELL, & DAYBRITE SHALL BE CONSIDERED AS EQUAL.

2 FIRST FLOOR REMODEL

1/4" = 1'-0"



Consultant:

SCHOOL DISTRICT OF LA CROSSE
LONGFELLOW MIDDLE SCHOOL SECURE ENTRY
ADDITION AND REMODEL

Project Location: 1900 DENTON STREET LA CROSSE, WISCONSIN

Project Title:

HSR Project Number: 16087

Project Date: MAY 2017

Drawn By: AR

Key Plan:

REMARKS

1. ON 24 HOURS.

2. RELAYS MAYBE CONTROLLED FROM MULTIPLE SWITCH LOCATIONS, REFER TO DRAWINGS FOR LOCATIONS AND QUANTITIES.

3. CONTROL BY PHOTO ONTIME CLOCK OFF.

Revisions:

No.	Description	Date

Graphic Scale:

Last Update:

5/26/2017 10:32:53 AM

E110