

# **2016**

# **ENGINEERING**



**ANNUAL REPORT**

# **ANNUAL REPORT** **2016**

## TABLE OF CONTENTS

Employees & Years of Experience.....2

2016 Project Pictures.....3

Contracts.....4

Annexations.....9

Permits..... 11

Sidewalk Grades Set.....14

Weights & Measurements.....16

Water Quality Management Approvals.....18

Traffic Engineering Section.....20

Storm Water Utility Credit Review..... 25

Design Reviews..... 27

# ENGINEERING STAFF YEARS WITH DEPARTMENT

(as of 2016)

---

|   |           |
|---|-----------|
| <b>*Randy Turtenwald, PE, City Engineer</b> | <b>25</b> |
| Bernard Lenz, PE, Assistant City Engineer   | 9         |
| Matthew Gallagher, PE, Traffic Engineer     | 10        |
| Greg Kozelek, PE, Civil Engineer IV         | 23        |
| Scott Dunnum, RLS, City Surveyor            | 16        |
| Jamie Hassemer, Civil Engineer I            | 1         |
| Yuri Nasonovs, Civil Engineer I             | 5         |
| Douglas Kerns, Aide II                      | 13        |
| Brian Monk, Aide II                         | 17        |
| Jay Crandall, Drafter II                    | 21        |
| Kyle Coman, Aide I                          | 10        |
| Brian Asp, Aide I                           | 2         |
| *Karen Novak, Engineering Secretary         | 9         |

\*Does not include time earned in other City Departments.

## Select 2016 Projects



**Digester 3 Rehabilitation**

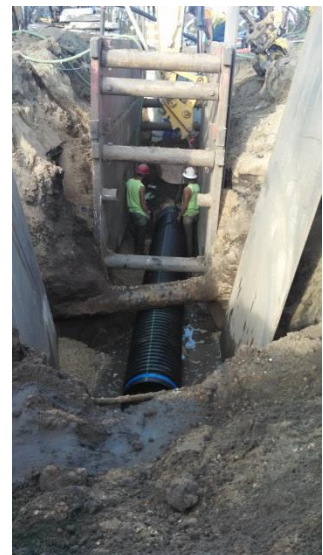
**GENA Capital Infrastructure  
Project**



**River Valley  
Drive**



**Storm Sewer  
Projects**



# CONTRACTS

| <b>2016 Contracts Awarded By Month</b>   |                        |                                   |                             |
|--|------------------------|-----------------------------------|-----------------------------|
| <b>Project Name</b>  | <b>Date Bids Taken</b> | <b>Contractor</b>                 | <b>Full Contract Amount</b> |
| <b>Island Street 2014 Sidewalk In-fill</b>   | January                | Fowler & Hammer, Inc.             | \$47,267.00                 |
| <b>Commerce Street Reconstruction</b>  | January                | Chippewa Concrete Services        | \$281,111.00                |
| <b>Re-Bid: County Road B Retaining Wall Reconstruction</b>   | January                | Steiger Construction, Inc.        | \$84,027.00                 |
| <b>800 Rose St. Emergency Roof Replacement</b>   | January                | Winona Heating & Ventilating Co.  | \$11,490.00                 |
| <b>1113 3rd St. South-Structure Demolition (Quote)</b>   | January                | Robinson Brothers Environmental   | \$15,000.00                 |
| <b>Cameron Park Playground</b>   | February               | Dresen Decks & Patios, Inc.       | \$51,662.00                 |
| <b>14th Street Curb &amp; Gutter with Utilities</b>  | February               | Fowler & Hammer, Inc.             | \$141,231.00                |
| <b>Caledonia Street Streetscaping</b>  | February               | Fowler & Hammer, Inc.             | \$35,045.00                 |
| <b>Townsend Street Storm Sewer Project- Phase 2</b>  | February               | Fowler & Hammer, Inc.             | \$188,681.00                |
| <b>2016 Sidewalk Replacement Program</b>   | February               | Augelli Concrete & Excavating LLC | \$121,850.00                |
| <b>Historical Corridor Lighting- Copeland Ave.- Equipment Purchase</b>   | February               | Viking Electric Supply            | \$92,435.00                 |
| <b>Design Agreement for Market St. Reconstruction (14th St. - 19th St.)</b>  | February               | I & S Group, Inc.                 | \$51,405.62                 |
| <b>Design Agreement for 6th St. Reconstruction (Badger St. - State St.)</b>  | February               | I & S Group, Inc.                 | \$118,448.78                |
| <b>2016 ADA Ramp Replacement</b>   | March                  | Fowler & Hammer, Inc.             | \$53,315.00                 |
| <b>2016 Misc. Curb &amp; Gutter &amp; Pavement Replacement</b>   | March                  | Fowler & Hammer, Inc.             | \$137,063.00                |
| <b>2016 Streetscape Improvements</b><br>- 600 Block of South 2 <sup>nd</sup> St.<br>-2 <sup>nd</sup> St.: Jay St. to King St, East Side<br>-King St.: 2 <sup>nd</sup> to 3 <sup>rd</sup> St., North Side<br>-West Side of 4 <sup>th</sup> : State St. to Vine St.<br>-South Side of Vine St.: 3 <sup>rd</sup> St. to 4 <sup>th</sup> St. | March                  | Fowler & Hammer, Inc.             | \$194,976.00                |
| <b>2016 Contract Pavement Projects with Curb and Gutter</b><br>- Porous Pavement at East Ave from Adams St. to Farnam St.<br>-Reconstruction of Oak St.: Rublee St. South to Cull-Du-Sac<br>-Reconstruction of Hood St. from 4 <sup>th</sup> St. to 8 <sup>th</sup> St.  | March                  | Chippewa Concrete Services        | \$501,531.00                |

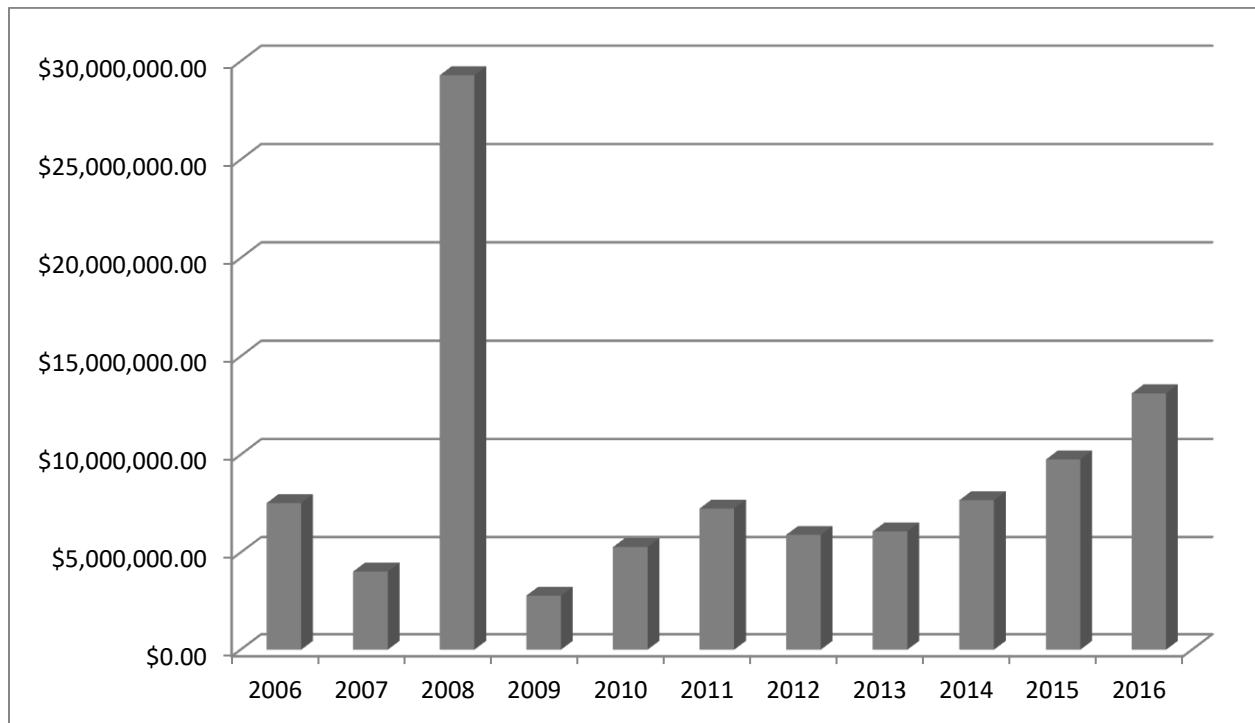
|  |       |  |                |
|--|-------|--|----------------|
| <b><u>2016 Curb and Gutter Replacement (South)</u></b><br>-Oakland St.: Farwell to Badger<br>-Cameron Ave: 8 <sup>th</sup> to 11 <sup>th</sup><br>-Concord Pl.: 29 <sup>th</sup> Court to East Cul-De-Sac<br>-Hyde Ave:13 <sup>th</sup> to 16 <sup>th</sup><br>-East Ave: Green Bay St. to Weston St.<br>-Tyler St.: 8 <sup>th</sup> St. to 9 <sup>th</sup> St.<br>- 9 <sup>th</sup> St.: State St. to Vine St.<br>- 22 <sup>nd</sup> St.: La Crosse St. to Campbell Rd. | March | Steiger Construction, Inc.                 | \$535,500.00   |
| <b>River Valley Drive Reconstruction</b>   | March | Chippewa Concrete Services                 | \$353,682.00   |
| <b>2016 Sanitary Sewer &amp; Rehabilitation Projects</b>   | April | Visu-Sewer, Inc.                           | \$640,168.00   |
| <b><u>2016 Curb and Gutter Replacement (North)</u></b><br>-Ruble St.: Onalaska Ave to George St.<br>-Logan St.: Charles St. to Kane St.<br>Powell St.: St. Cloud St. to St. Andrew St. (With Sidewalks)<br>-Avon St.: Gillette St. to Sill St.<br>- Liberty St.: Gillette St. to Sill St.  | April | Steiger Construction, Inc.                 | \$255,200.00   |
| <b>Historical Corridor Lighting- Copeland Ave.</b>   | April | Fowler & Hammer, Inc.                      | \$73,950.00    |
| <b>Rose St. Storm Sewer (Palace to Livingston)</b>   | April | Gerke Excavating, Inc.                     | \$318,625.00   |
| <b>Design Services for Digester 3 Rehab</b>  | April | Process Equipment Repair Services          | \$359,000.00   |
| <b>Design Agreement-LAX Marina &amp; Cruise Ship Landing</b>   |       |  |                |
| <b>International Business Park Sidewalks</b>   | May   | Fowler & Hammer, Inc.                      | \$267,602.00   |
| <b>Riverside Parking Structure Addition</b>  | May   | CD Smith Construction Services             | \$5,532,000.00 |
| <b>Farnam Court Sewer &amp; Water Construction</b>   | May   | Fowler & Hammer, Inc.                      | \$88,315.00    |
| <b>Design Agreement for New Road for IBP Expansion</b>   | June  | SEH, Inc.                                  | \$87,979.00    |
| <b>Structure Demolition- 1413 9th St. South (Quote)</b>  | June  | Harter Trucking, Inc.                      | \$9,800.00     |
| <b>Demo Condemned Structure at 2511 Cass St. &amp; 1113 Johnson St. (Quote)</b>  | June  | Les Manske & Sons                          | \$7,000.00     |
| <b>Cathodic Protection System - CTY B</b>  | July  | Badger Environmental & Earthworks          | \$220,565.00   |
| <b>IBP Trail Extension</b>   | July  | Les Manske & Sons Excavating & Landscaping | \$59,967.50    |

|   |           |                                     |              |
|---|-----------|-------------------------------------|--------------|
| <b>Sidewalk Infill (Windsor &amp; Island St.)</b>                       | July      | Fowler & Hammer, Inc.               | \$63,701.00  |
| <b>Lang Drive Conduit</b>   | July      | Poellinger Electric, Inc.           | \$24,392.00  |
| <b>Fire station No. 2 Generator Project</b>                             | July      | Klich Electric, Inc.                | \$51,665.00  |
| <b>WWTP Digester 3 Cover Rehabilitation</b>                             | July      | Winona Welding & Sandblasting, Inc. | \$359,000.00 |
| <b>Bike Trail Fence- (Gillette St. North to Bike Bridge)</b>            | August    | Phillips Outdoor Services           | \$177,800.00 |
| <b>Myrick Park Sidewalks</b>  | August    | Fowler & Hammer, Inc.               | \$113,406.00 |
| <b>Agreement for Digester 3 Inspection Services</b>                     | August    | Process Equipment Repair Services   | \$76,675.00  |
| <b>Bridge Repairs- Misc.</b>  | September | Hess Excavating                     | \$8,470.00   |
| <b>Fire Station NO. 3 Storage Building- Soil Borings</b>                | September | CHOSEN VALLEY TESTING               | \$6,000.00   |
| <b>River Valley Drive Crack Sealing (Quote)</b>                         | September | Fahrner Asphalt Sealers LLC         | \$138,700.00 |
| <b>Elevation Data- Round One</b>  | September | LYDON SURVEYING                     | \$195 PER EC |
| <b>Elevation Data- Round Two</b>  | September | LYDON SURVEYING                     | \$195 PER EC |
| <b>City Hall Roof</b>   | September | Ledegar Roofing Co., Inc.           | \$405,685.00 |
| <b>GENA Equipment Purchase</b>  | October   | Tapco                               | \$16,914.80  |
| <b>RE-Bid: Pettibone Park Canoe-Kayak Storage Shelter</b>               | November  | Fowler & Hammer, Inc.               | \$192,291.00 |
| <b>Powell Park Renovations (HUD)</b>                                    | November  | Fowler & Hammer, Inc.               | \$372,000.00 |
| <b>Demolition- 717 Wall St. (Quote)</b>                                 | December  | Hess Excavating                     | \$25,200.00  |
| <b>Agreement for Nondestructive Evaluation of 4 Bridges</b>             | November  | Infrasense                          |              |
| <b>Video Installation at Losey Blvd &amp; State Road Signal (Quote)</b> | December  | Gridsmart Technologies, Inc.        | \$16,736.00  |
| <b>VIP Trail Real Estate Negotiation Services</b>                       | December  | Erickson Right of Way Services, LLC | \$3,830.00   |
| <b>2016-2017 Sidewalk Snow Removal</b>                                  | December  | Midwest Roll-Off, Inc.              | \$38,700.00  |



## CONTRACTS AWARDED

| Year | Number of Contracts | Amount          |
|------|---------------------|-----------------|
| 2006 | 54                  | \$7,538,608.15  |
| 2007 | 52                  | \$4,024,378.90  |
| 2008 | 58                  | \$29,295,015.39 |
| 2009 | 47                  | \$2,782,519.88  |
| 2010 | 41                  | \$5,280,256.03  |
| 2011 | 41                  | \$7,262,471.00  |
| 2012 | 60                  | \$5,908,916.55  |
| 2013 | 76                  | \$6,090,822.60  |
| 2014 | 52                  | \$7,689,070.65  |
| 2015 | 54                  | \$9,760,150.69  |
| 2016 | 56                  | \$13,120,953.70 |



# ANNEXATIONS

| ANNEXATIONS                          |   |                  |                     |
|--------------------------------------|---|------------------|---------------------|
| YEAR                                 | LOCATION  | SIZE (ACRES)     | SIZE (SQUARE MILES) |
| <b>2012</b>                          | -   | -                | -                   |
| <b>2013</b>                          | <b>Mathy II Annexation</b><br>Town of Medary            | 5.572            | .00871              |
|                                      | <b>Dobson Annexation</b><br>Town of Shelby              | 53.53            | .08364              |
| <b>2014</b>                          | <b>Binsfield Annexation</b><br>Town of Campbell         | .79              | .00123              |
|                                      | <b>1938 Nakomis Ave. Annexation</b><br>Town of Campbell | .39              | .00061              |
| <b>2015</b>                          | <b>Mess Annexations</b><br>Town of Medary & Shelby      | 736.52           | 1.1508              |
|                                      | <b>Strupp Annexation</b><br>Town of Medary              | 26.18            | .04091              |
| <b>2016</b>                          | <b>Dakota Annexation</b><br>Town of Campbell            | .5               | .00078              |
|                                      | <b>Delagrave Annexation</b><br>Town of Campbell         | .55              | .00086              |
| <b>City of La Crosse Total Size:</b> |   | <b>15,107.17</b> | <b>23.61</b>        |

# Permits Issued

| <b>DUMPSTER PERMITS</b> |                |
|-------------------------|----------------|
| <b>YEAR</b>             | <b>PERMITS</b> |
| <b>2012</b>             | 464            |
| <b>2013</b>             | 320            |
| <b>2014</b>             | 336            |
| <b>2015</b>             | 326            |
| <b>2016</b>             | 378            |

| <b>EXCAVATION PERMITS</b> |                |
|---------------------------|----------------|
| <b>YEAR</b>               | <b>PERMITS</b> |
| <b>2012</b>               | 240            |
| <b>2013</b>               | 235            |
| <b>2014</b>               | 220            |
| <b>2015</b>               | 296            |
| <b>2016</b>               | 383            |

| <b>STREET PRIVELEGE PERMITS</b> |                |
|---------------------------------|----------------|
| <b>YEAR</b>                     | <b>PERMITS</b> |
| <b>2012</b>                     | 220            |
| <b>2013</b>                     | 148            |
| <b>2014</b>                     | 147            |
| <b>2015</b>                     | 115            |
| <b>2016</b>                     | 127            |

| <b>PARADE PERMITS</b> |                |
|-----------------------|----------------|
| <b>YEAR</b>           | <b>PERMITS</b> |
| <b>2012</b>           | 41             |
| <b>2013</b>           | 36             |
| <b>2014</b>           | 37             |
| <b>2015</b>           | 41             |
| <b>2016</b>           | 40             |

| MOVING PERMITS |         |
|----------------|---------|
| YEAR           | PERMITS |
| 2012           | 85      |
| 2013           | 23      |
| 2014           | 23      |
| 2015           | 68      |
| 2016           | 37      |

| SIDEWALK SNOW |               |             |
|---------------|---------------|-------------|
| YEAR          | SITES CLEARED | BILLS       |
| 2012          | 44            | \$8,656.20  |
| 2013          | 161           | \$30,903.00 |
| 2014          | 105           | \$22,785.00 |
| 2015          | 182           | \$36,222.50 |
| 2016          | 188           | \$34,786.00 |

| SIDEWALK PERMITS |         |
|------------------|---------|
| YEAR             | PERMITS |
| 2012             | 16      |
| 2013             | 18      |
| 2014             | 18      |
| 2015             | 25      |
| 2016             | 20      |

| DRIVEWAY PERMITS |         |
|------------------|---------|
| YEAR             | PERMITS |
| 2012             | 27      |
| 2013             | 25      |
| 2014             | 17      |
| 2015             | 34      |
| 2016             | 31      |

# Sidewalk Grades Set

| <b>SIDEWALK REPLACEMENT</b> |                                |              |
|-----------------------------|--------------------------------|--------------|
| <b>YEAR</b>                 | <b>SQUARE FEET OF SIDEWALK</b> | <b>COST</b>  |
| <b>2012</b>                 | 13,400                         | \$69,588.00  |
| <b>2013</b>                 | 24,163                         | \$112,052.60 |
| <b>2014</b>                 | 18,849                         | \$98,335.20  |
| <b>2015</b>                 | 16,136                         | \$86,740.80  |
| <b>2016</b>                 | 15,048                         | \$75,240.00  |

| <b>SIDEWALK GRINDING</b> |                             |                  |             |
|--------------------------|-----------------------------|------------------|-------------|
| <b>YEAR</b>              | <b>NUMBER OF PROPERTIES</b> | <b>INCH/FOOT</b> | <b>COST</b> |
| <b>2012</b>              | 0                           | 0                | 0           |
| <b>2013</b>              | 0                           | 0                | 0           |
| <b>2014</b>              | 66                          | 524              | \$5,764.00  |
| <b>2015</b>              | 234                         | 1,500            | \$16,500.00 |
| <b>2016</b>              | 643                         | 2,550            | \$25,500.00 |



# Weights and Measures

| <b>Weights &amp; Measures Statistics</b> |                       |                            |
|--|-----------------------|----------------------------|
| <b>YEAR</b>                              | <b># OF CUSTOMERS</b> | <b>TOTAL AMOUNT BILLED</b> |
| <b>2012**</b>                            | 156                   | \$25,453.00                |
| <b>2013**</b>                            | 169                   | \$26,333.00                |
| <b>2014**</b>                            | 175                   | \$25,356.00                |
| <b>2015**</b>                            | 176                   | \$26,391.00                |
| <b>2016**</b>                            | 165                   | \$25,371.00                |

**\*\* Weights and Measures inspection by State**

# WATER QUALITY MANAGEMENT APPROVALS

## **WATER QUALITY MANAGEMENT PLANS**

The Wisconsin Department of Natural Resources administers and developed area-wide quality management plans pursuant to Wisconsin Administrative Code NR 121.

As of January 1, 1989 the State gave the City Engineer of La Crosse the authority to conduct sewer plan conformance reviews for the La Crosse Sewer Service Area Plan 1999-2020. The department of Natural Resources requested the City to conduct these reviews to increase the efficiency of implementing the plan.

The plan requires requests for any public sewer extension and request for any new commercial or industrial development or for any residential development greater than a duplex. To obtain a Water Quality Management letter of approval from the City Engineer.

Following is a tabulation of the number of approval request by the year:

|             |                    |
|-------------|--------------------|
| <b>2012</b> | <b>6 Requests</b>  |
| <b>2013</b> | <b>8 Requests</b>  |
| <b>2014</b> | <b>7 Requests</b>  |
| <b>2015</b> | <b>9 Requests</b>  |
| <b>2016</b> | <b>10 Requests</b> |

# TRAFFIC ENGINEERING SECTION

2016

| <b>Traffic Signals and Beacons</b> |  |
|------------------------------------|--|
| <b>2012</b>                        | 1 Full Signal Replacement<br>-Losey Blvd & Main St.<br>2 New RRFB's<br>-Losey Blvd & Johnson St.<br>-2500 State Road<br>133 Signal Detection Tests, Opticom System<br>Conflict Monitors Tested<br>4 New or Replaced Signal Cabinets<br>5 New or Reprogrammed Traffic Controllers |
| <b>2013</b>                        | 1 Signal Study/Preliminary Design<br>-Losey Blvd. & Green Bay St.<br>1 New RRFB's<br>-900 Jackson St.<br>133 Signal Detection Tests, Opticom System<br>Conflict Monitors Tested<br>4 New or Replaced Signal Cabinets<br>6 New or Reprogrammed Controllers                        |
| <b>2014</b>                        | 2 New RRFB's<br>-Losey Blvd. & Travis St.<br>-Ward ave. & 21 <sup>st</sup> Terrace<br>133 Signal Detection Tests, Opticom System<br>Conflict Monitors Tested   |
| <b>2015</b>                        | 2 New RRFB's<br>-State St. & Campbell Rd.<br>-Copeland ave. at La Crosse River<br>Conversion to Video<br>-Losey Blvd. & Green Bay St.<br>133 Signal Detection Tests, Opticom System<br>Conflict Monitors Tested  |
| <b>2016</b>                        | 1 Replaced Traffic Controller<br>2 New RRFB's<br>-West ave. & Pine St.<br>-Rose St. @ BRBNC<br>Conversion to Video<br>-West ave. & La Crosse St.<br>-State Rd. & Losey Blvd.<br>133 Signal Detection Tests, Opticom System<br>Conflict Monitors Tested                           |

| <b>Street Lighting</b> |   |
|------------------------|---|
| <b>2012</b>            | 21 Street Light Evaluations<br>5 New Safety Street Lights<br>3 New Decorative Street Lights<br>24 Street Lighting Conversions to LED  |
| <b>2013</b>            | 12 Street Lighting Studies<br>5 New Safety Street Lights<br>300 3 <sup>rd</sup> St. S., 400 3 <sup>rd</sup> St. S.<br>300 King St., 300 Jay St.<br>88 Lights on 6 <sup>th</sup> St. |
| <b>2014</b>            | 300 Division St.  |
| <b>2015</b>            | 400 & 500 State St.<br>200,300,400, & 500 4 <sup>th</sup> St. North<br>200 La Crosse St.<br>200 Pine St.<br>300,400, & 500 2 <sup>nd</sup> St. North                                |
| <b>2016</b>            | 163 Neighborhood Lights<br>400 2 <sup>nd</sup> St. South<br>800 2 <sup>nd</sup> St. South<br>1000 Caledonia St.   |

| <b>Traffic Calming</b> |                     |   |                                |                                     |   |
|------------------------|---------------------|---|--------------------------------|-------------------------------------|---|
| <b>YEAR</b>            | <b>SPEED TABLES</b> | <b>INTERSECTION<br/>CORNER BUMP-<br/>OUTS</b> | <b>RAISED<br/>INTERSECTION</b> | <b>RAISED<br/>MEDIAN<br/>ISLAND</b> | <b>Bio-Cell<br/>Retention<br/>Devices</b> |
| <b>2012</b>            | 6                   | 6   | 3                              | 1                                   | 10  |
| <b>2013</b>            | 0                   | 12  | 1                              | 2                                   | 4   |
| <b>2014</b>            | 0                   | 1   | 0                              | 2                                   | 2   |
| <b>2015</b>            | 0                   | 8   | 0                              | 0                                   | 6   |
| <b>2016</b>            | 0                   | 9   | 0                              | 1                                   | 0   |

| <b>Miscellaneous Traffic Work</b> |   |  |
|-----------------------------------|---|--|
| <b>YEAR</b>                       | <b>STRIPING &amp; SHARROWS</b>  | <b>STUDIES/EVALUATIONS</b>   |
| <b>2012</b>                       | 16 Block Faces Re-Painted for Parallel Parking (Maintenance)<br>2 New Block Faces Painted for Parallel Parking (New)<br>-180 Miles, Long Line Painting/Striping<br>-189 Bike Lane Symbols Painted<br>-299 "Sharrow" Symbols Painted<br>-650 Crosswalks Painted, Maintenance | -4 Traffic Counts<br>-5 Crosswalk Evaluations, Signing<br>-3 Permanent Traffic Control Intersection<br>-Intersection Evaluations for Traffic Signal, Warrant Analysis, Traffic Impact Analysis   |
| <b>2013</b>                       | -18 Block Faces Re-Painted for Parallel Parking (Maintenance)<br>-180 Miles of Long Line Painting/Striping<br>-650 Crosswalks Painted, Maintenance<br>-6 Permanent Traffic Control Intersection-Signing Evaluations   | -13 Traffic Counts<br>-Intersection Evaluations for Traffic Signal, Warrant Analysis, Traffic Impact Analysis<br>-6 Crash Report Diagrams<br>-6 Intersection Sight Distance Evaluation<br>-STP Urban Projects:<br>-Oak St. Construction<br>-33 <sup>rd</sup> St. Construction<br>-6 <sup>th</sup> St. Estimates and Application<br>-Market St. Estimates and Application<br>-Safe Routes to School<br>-Scope Change<br>-Intergovernmental agreement<br>-Updated State/Municipal Agreement<br>-New Sidewalks:<br>-Main St.<br>-Cass St.<br>-Farnam St.<br>-33 <sup>rd</sup> St. South |
| <b>2014</b>                       | -18 Block Faces Re-Painted for Parallel Parking (Maintenance)<br>-180 Miles, Long Line Painting/Striping<br>-189 Bike Lane Symbols Painted<br>-299 "Sharrow" Symbols Painted<br>-654 Crosswalks Painted (Maintenance)   | -Traffic Counts<br>-Opticom Testing<br>-Conflict Monitor Testing<br>New Sidewalks:<br>-33 <sup>rd</sup> St. from Solaris to Peace St.<br>-Island St. from Lang Drive West to Existing<br>-250 Signs Inventoried<br>-Intersection Evaluations for Traffic Signal, Warrant Analysis, Traffic Impact Analysis   |
| <b>2015</b>                       | -18 Block Faces Re-Painted for Parallel Parking (Maintenance)<br>-180 Miles, Long Line Painting/Striping<br>-658 Crosswalks Painted (Maintenance)   | -Traffic Counts<br>-Opticom Testing<br>-Conflict Monitor Testing<br>-New Sidewalks:<br>-Cty Rd. B<br>-28 <sup>th</sup> St.<br>-Birch St.<br>-Intersection Evaluations for Traffic Signal, Warrant Analysis, Traffic Impact Analysis  |



|             |  |   |
|-------------|--|---|
| <b>2016</b> | <ul style="list-style-type: none"> <li>-21 Block Faces Re-Painted for Parallel Parking (Maintenance)</li> <li>-662 Crosswalks Painted (Maintenance)</li> </ul> | <ul style="list-style-type: none"> <li>-Traffic Counts</li> <li>-Opticom Testing</li> <li>-Conflict Monitor Testing</li> <li>-New Sidewalks: <ul style="list-style-type: none"> <li>-Wall St.</li> <li>-Windsor St.</li> <li>-Island St.</li> <li>-Rublelee St.</li> <li>-Oak St.</li> <li>-Old Town Hall Road</li> <li>-St. Andrew St.</li> <li>-21<sup>st</sup> Place</li> <li>-26<sup>th</sup> St.</li> </ul> </li> <li>-Intersection Evaluations for Traffic Signal, Warrant Analysis, Traffic Impact Analysis</li> </ul> |
|-------------|--|---|

# Storm Water Utility Credit Review

| <b>Storm Water Utility Statistics</b> |                         |                        |                           |                        |                |
|---------------------------------------|-------------------------|------------------------|---------------------------|------------------------|----------------|
| <b>Year</b>                           | <b># of Residential</b> | <b># of Commercial</b> | <b>Partial Exemptions</b> | <b>Full Exemptions</b> | <b>Credits</b> |
| <b>2012</b>                           | 20                      | 117                    | 22                        | 71                     | 4,630.5        |
| <b>2013</b>                           | 10                      | 32                     | 9                         | 16                     | 438.7          |
| <b>2014</b>                           | 5                       | 13                     | 1                         | 2                      | 122.9          |
| <b>2015</b>                           | 1                       | 5                      | 0                         | 1                      | 193.6          |
| <b>2016</b>                           | 1                       | 6                      | 2                         | 2                      | 230.6          |

# DESIGN REVIEWS

| Design Reviews |  |
|----------------|--|
| <b>2012</b>    | Triplex at 1022 Vine Street, Breidenback Development, Duplex at 816-818 Copeland Ave, KFC Remodeling, Gunderson Lutheran Biomass CHP System, Kwik Trip Addition, Bentz Chiropractic, 22 Commercial/Multi-Family(including parking lots)  |
| <b>2013</b>    | Midtown Building, 15 Unit Apartment Building, Duplex at 1465 Green Bay St., State Bank Addition, Bethany Lutheran Homes, Bluff view Apartments, Northside Elementary, 24 Unit Apartment Complex at Vine & 13 <sup>th</sup> .   |
| <b>2014</b>    | 18 Unit Apartment Complex at Pine and 13 <sup>th</sup> , Apartment Building at 418 11 <sup>th</sup> St. North, Apartment Building at 1419 Caledonia St., Dick's Sporting Goods, Duplex at 2344 Hwy. 16, Fitness Complex, Hampton Inn, Pettibone Boat Club, The Charmant Hotel  |
| <b>2015</b>    | 18 Unit Apartment Complex at 515 12 <sup>th</sup> St., 2219 South Ave., Aguilera, Fairfield Inn, GHSOFP Planned Unit Development for 6 Duplexes, Gordy's Express, Grounded Specialty Coffee, Home2 by Hilton, Kevin Biando 32 Unit Apartment Building, Lot C Mixed Use, Pischke Motors Development   |
| <b>2016</b>    | 16 Unit Apartment Complex Gillette & HWY 16, Airport Fuel Farm, Boys & Girls Club, Dahl Automotive, Dave's Guitar Shop Phase III, Fanta Reed Rd., Fenigor-Storm Water, Good Steward Resale Shop, Gunderson Hotel, Gunderson Health Parking Lot Plans, Loggers Field, Moka Coffee Shop, Mormon Coulee Rd. Apartments, O'Reilly Auto Parts, Parking Ramp 3 <sup>rd</sup> & Vine, Water Place One, Whitney Loading Dock |