

STORM MANHOLE
RIM = 652.83
I.E.S. =

COPELAND AVENUE

ASPHALT PAVEMENT

STORM MANHOLE
RIM = 653.52
I.E.N. = 645.72
I.E.W. = 634.12
I.E.E. = 634.12

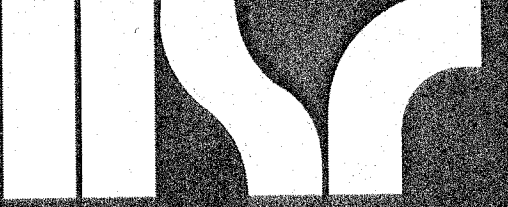
SITE NOTES

- The location of existing utilities, both underground and overhead are approximate only and have not been independently verified by the owner or its representatives. The contractor shall be responsible for determining the exact location of all existing utilities, whether shown on these plans or not, before commencing work, and shall be fully responsible for any and all damages which might be caused by the contractor's failure to exactly locate and preserve any and all utilities.
CALL DIGGERS HOTLINE (800) 242-8511
- The underground locations of the Public Utilities were marked by representatives of those companies. The locations of the privately owned underground utilities were not marked.
- There may be more underground utility installations within the project area that are not shown.
- It shall be the contractors responsibility to arrange for any necessary inspections by local government that may be required.
- Any and all parties utilizing vertical datum shall always check into at least two (2) benchmarks to avoid mistakes due to hydrant adjustments or transpositional errors. Failure to do so will be considered tantamount to gross negligence and subject the offending party to any damages resulting therefrom.

DEMOLITION NOTES

- 1 REMOVE EXISTING SPLASH PARK FEATURES AND CONCRETE
- 2 PROTECT EXISTING IMPROVEMENT IN PLACE
- 3 PROTECT EXISTING UTILITY
- 4 PROTECT EXISTING TREE. SEE DETAIL A FOR TREE PROTECTION

ARCHITECTURE
ENGINEERING
INTERIOR DESIGN



HSR ASSOCIATES INC.
100 MILWAUKEE STREET
LA CROSSE, WISCONSIN
PHONE: 608.784.1830
FAX: 608.782.5844
WEB SITE: www.hsrassociates.com

Consultant:

PARAGON ASSOCIATES
Environmental Design & Consulting
Civil Engineering, Landscape Architecture, Surveying
632 COPELAND AVENUE, LA CROSSE, WI 54603
Tel: 608.781.3110 Fax: 608.781.3197 Paragon-Associates

CITY OF LA CROSSE
COPELAND PARK UPDATE
1020 COPELAND PARK DRIVE
LA CROSSE, WISCONSIN
DEMOLITION PLAN

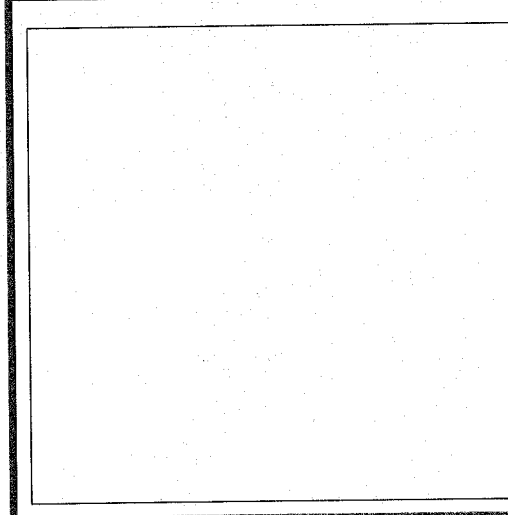
Project Title:

HSR Project Number: 17032

Project Date: AUGUST 2017

Drawn By: C.G.

Key Plan:

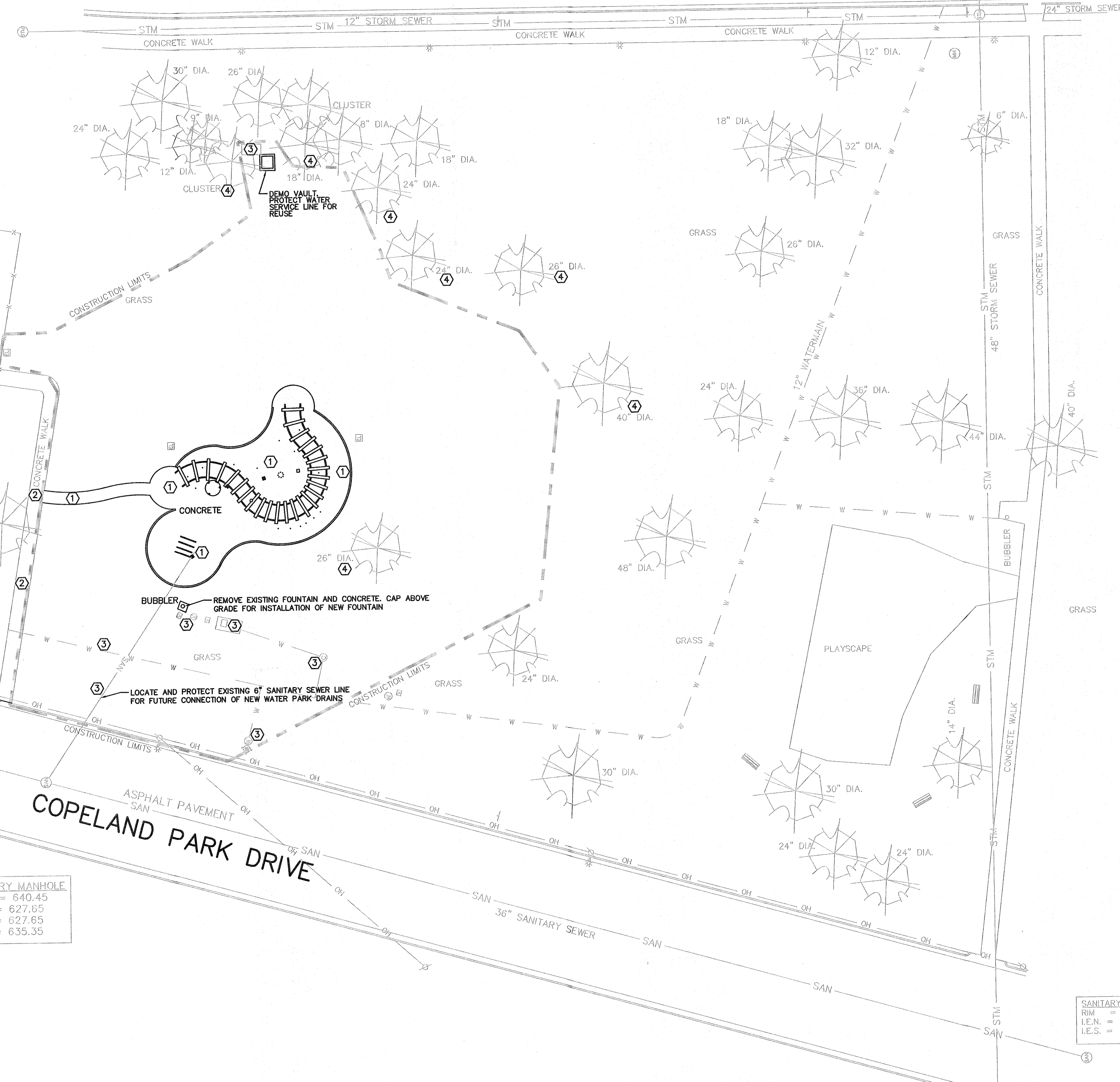


Revisions:		
No.	Description	Date

Graphic Scale: 1"=20'

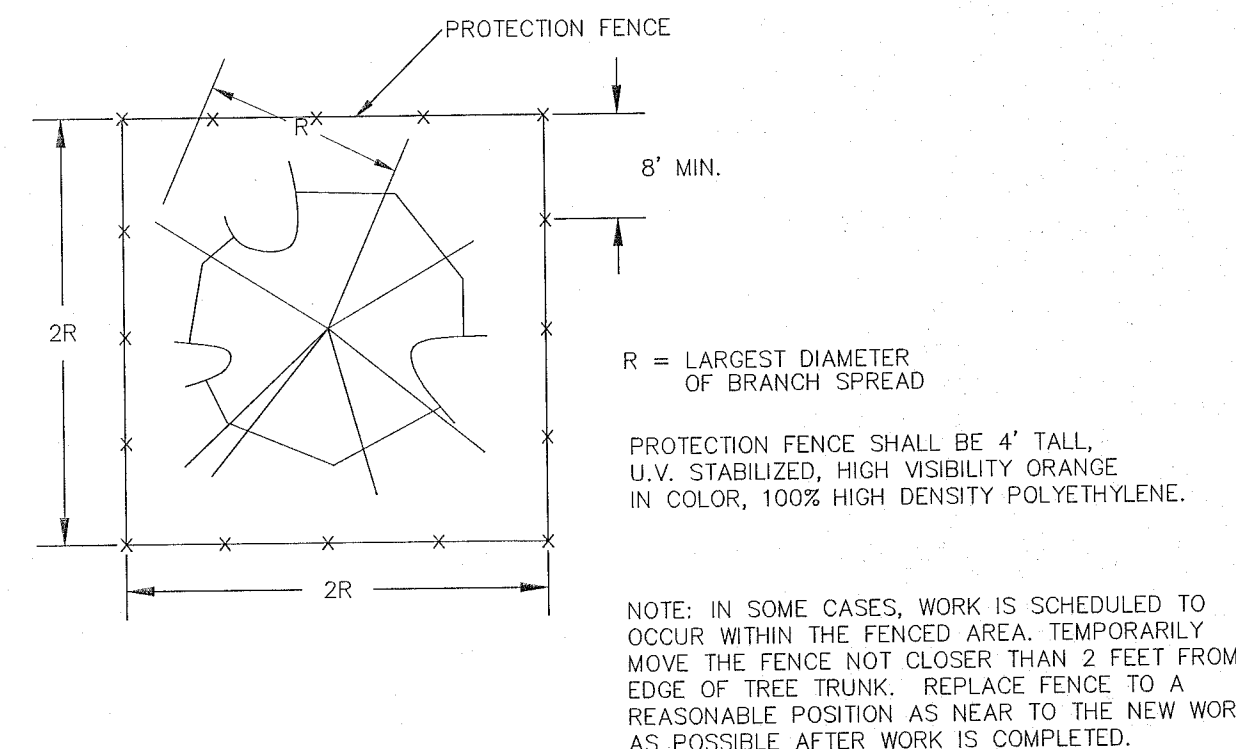
Last Update: 08/11/2017

C050

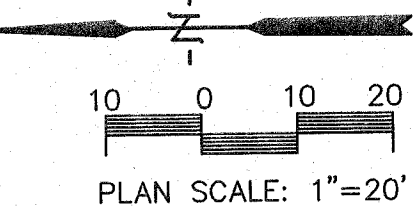


SANITARY MANHOLE
RIM = 640.45
I.E.N. = 627.65
I.E.S. = 627.65
I.E.E. = 635.35

SANITARY MANHOLE
RIM = 641.08
I.E.N. =
I.E.S. =



A TREE PROTECTION DETAIL
C050 NO SCALE



PLAN SCALE: 1"=20'