

COPELAND AVENUE

ASPHALT PAVEMENT

STORM MANHOLE
RIM = 652.83
I.E.S. =

STORM MANHOLE
RIM = 653.52
I.E.N. = 645.72
I.E.W. = 634.12
I.E.E. = 634.12

UTILITY NOTES:

ALL WATER & SEWER CONSTRUCTION SHALL COMPLY WITH THE LATEST EDITION OF "STANDARD SPECIFICATIONS FOR SEWER & WATER IN THE STATE OF WISCONSIN," ALONG WITH THE CITY OF LA CROSSE STANDARD SPECIFICATIONS, AS APPROPRIATE.

ALL WATER LATERALS SHALL HAVE A MINIMUM DEPTH 6' BELOW FINISHED FLOOR ELEVATIONS. THE CONTRACTOR IS THE COORDINATE ACTIVITIES & CONFIRM LOCATION & ELEVATION OF SERVICES WITH THE ENGINEER.

USE C.L.D.I.P. FOR ALL WATER MAIN.

ALL WATER MAINS SHALL HAVE A MINIMUM OF 7.5' OF COVER.

SUITABLE ON-SITE GRANULAR MATERIAL SHALL BE USED FOR TRENCH BACKFILL TO PROPOSED ELEVATIONS. BACKFILL SHALL BE COMPACTED AS SPECIFIED.

ALL EXISTING INVERTS & LOCATIONS SHALL BE VERIFIED PRIOR TO CONSTRUCTION. ALL DISCREPANCIES FROM INFORMATION SHOWN ON THE PLANS SHALL BE REPORTED TO THE ENGINEER IMMEDIATELY.

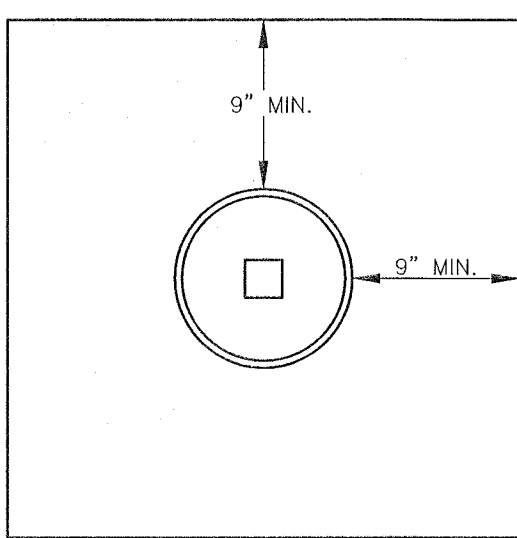
CONTRACTOR SHALL IDENTIFY & MARK THE EXACT LOCATIONS OF ALL UNDERGROUND CONNECTIONS TO WATER AND SEWER MAINS, BENDS, CURB BOXES, CLEAN OUTS, ETC. ON THE AS-BUILT PLANS. COPIES OF THESE DOCUMENTS SHALL BE DELIVERED TO THE ENGINEER FOR RECORD.

LOCATION REQUIREMENT: NON-METALLIC SEWER/MAINS AND SERVICES MUST BE PROVIDED WITH TRACE WIRE OR OTHER METHODS IN ORDER TO BE LOCATED.

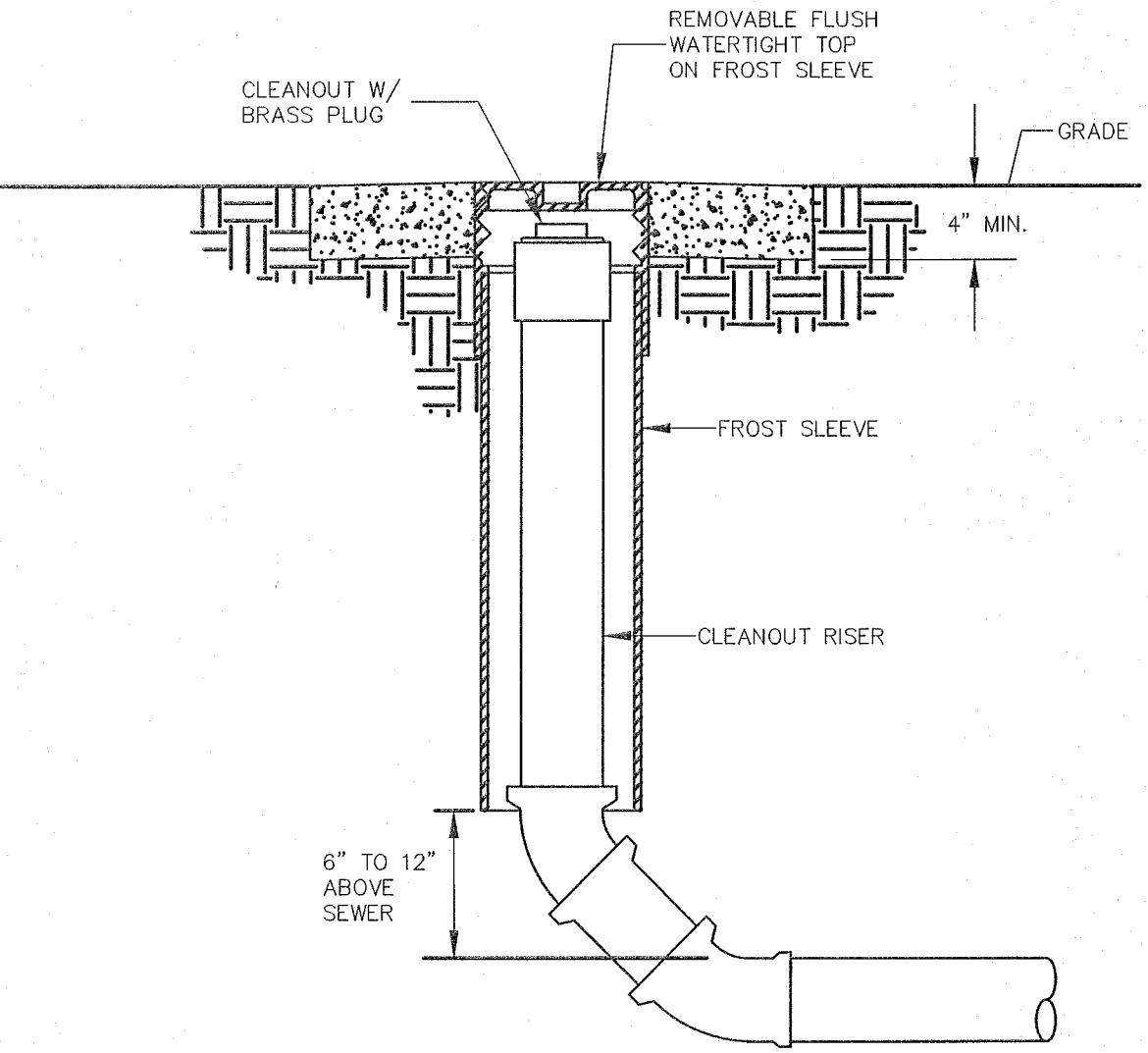
SHOP DRAWINGS FOR UTILITIES ARE REQUIRED.

NOTES:

① SEE DETAIL C400 FOR CLEAN OUT



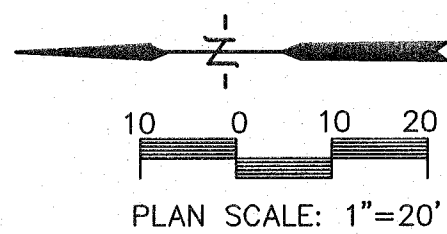
CONCRETE PAD REQUIRED IN AREAS SUBJECT TO VEHICULAR TRAFFIC.



EXTERIOR CLEANOUT DETAIL
NO SCALE

SANITARY MANHOLE
RIM = 640.45
I.E.N. = 627.85
I.E.S. = 627.85
I.E.E. = 635.35

SANITARY MANHOLE
RIM = 641.00
I.E.N. =
I.E.S. =



HSR ASSOCIATES INC.
100 MILWAUKEE STREET
LA CROSSE, WISCONSIN
PHONE: 608.784.1830
FAX: 608.782.5844

WEB SITE: www.hsrassociates.com

Consultant:

PARAGON ASSOCIATES
Environmental Design & Consulting
Civil Engineering - Landscape Architecture - Surveying
632 COPELAND AVENUE - LA CROSSE, WI 54603
Tel: 608.781.3110 Fax: 608.781.3197 Paragon-Associates

CITY OF LA CROSSE
COPELAND PARK UPDATE

1020 COPELAND PARK DRIVE
LA CROSSE, WISCONSIN

UTILITY PLAN

Project Title:
Sheet Title:

HSR Project Number:
17032

Project Date:
AUGUST 2017

Drawn By:
C.G.

Key Plan:

Revisions:		
No.	Description	Date

Graphic Scale:
1"=20'

Last Update:
08/11/2017

C400