



*Thank You for Considering Phillips Fencing, Inc. for Your Project.*

## **Our Mission**

**100 % Customer Satisfaction...**

We promise to serve our customers;

By offering only Quality products,

Superior installation,

And Unsurpassed Service.

*Tom, Steve, Lauri, Ben (Phillips) & Team*

***Serving the good people  
Of the Coulee Region  
Since 1975***



# Warning!!! 9 costly mistakes you should avoid.

We know that you have a choice, and making the right decision is of the upmost importance. Here are 9 things to avoid when choosing a fence contractor.

1. **Choosing solely on price...** You ultimately get what you pay for---this law of economics has withstood the test of time and continues to live on --- *"The bitterness of poor quality is remembered long after the pleasure of low price has been forgotten."* Choose carefully, because once you have the finished product you are STUCK with it, and it can cost you much more to have it changed or repaired in the future, than if you had it done right the first time. A quality product - properly installed - will increase the value of your property.
2. **Hiring inexperience or lack-of expertise...** Be sure the person(s) installing your product(s) has the experience and expertise to do a job you'll not only be satisfied with, but be able to live with. Don't just look at the number of years a company has been in business; find out how much experience they have in their fields. You want the person(s) installing your fence to know what they're doing. *"The little things do matter; it's all about the details."*
3. **Not doing your homework...** Avoid buyer's remorse...do due diligence! Be sure the company and product line is reputable, beware of companies who make name changes, be sure they have happy customers, returns calls, etc. Find out where the company is located? Check out their office & showroom, get testimonials, references and sites of products and installation. How well your project turns out often is a reflection of how well their company is run. *Invest the time now, so it doesn't cost you both time and money later.*
4. **Empty Guarantees...** What kind of warranties and guarantees are available and what do they really mean? They should be backed by, not only the manufacture, but the company installing it. What actions will be taken if you are dissatisfied with the quality of the install? Is the company willing to give you your money back if poorly installed? Will they even call you back? *If a company does quality work and installs quality products, it should be willing to give you a money back guarantee if they don't deliver.* You will generally not have any issues when dealing with integrity & high quality, properly installed products.
5. **Negligence...** Who's looking out for you? Will your property remain unharmed and clean throughout the building process? Will your neighbors' property suffer due to negligence on the behalf of careless installers? Most utility lines and irrigation lines run along your property lines. You want a professional who can handle the many challenges, as well as someone who is looking out for your lawn, flowers, shrubs and trees. Just being insured isn't enough--- you need insurance from the company.
6. **Using Sac-crete- just add water"...** Know the importance of 100% ready mix concrete for your fence post footings (*from the concrete truck*). Neglecting to use ample, quality concrete will compromise the integrity of the fence. Any fixed structure needs a secure foundation. "Bag-crete" will not hold up well and often is used only at the bottom or at the top of the fence post hole. Question: *What's better than getting a straight, sturdy & aesthetically pleasing fence???* Answer: **One that will stay that way!**
7. **Hiring a half company...** Be sure the company does what they say they're going to do, when they say they're going to do it? Your project should be completed within a timely manner once it has begun? *The average period to complete a project is 2 days.* Hire a company with a strong work ethic, not one who drags out projects & needs supervision. Make this an enjoyable experience, not one of stress for you or your neighbors.
8. **Choosing a product solely from a photo...** Consider the importance of seeing and feeling the actual product and how it looks & feels installed. *Not all products are equal!* Viewing displays & photos, receiving answers to questions about your product & estimate should be made an easy part of your decision process.
9. **Ignorance of the 3 R's... Restrictions, Regulations & Requirements:** Knowledge is king---the importance of hiring an expert. Not only do you want a quality product, installed right, but you need to comply along the way. You are responsible for knowing these if the company doesn't. It can cost you a lot if you incur fines or litigation, let alone the cost of fixing the problem.

## Court Yard Aluminum Fence ~ Features & Benefits

Factory Assembled Sections & Gates

~ Strongest finished product prevents sag / improper assembly

Rack able up to 12" per 6' section

~ Allows for grade change without altering sections

All 5 Colors same \$Price

~ Choice of Black, Bronze, White, Tan, Green and Black or Bronze w/texture

With 2 ½" Posts

~ Stronger; more Substantial than Industry Standard of 2"

Posts are 'Routed' to receive Rail ends inside posts

~ Clean look with out the use of Unsightly brackets

End Clips are notched

~ Allows rails to remain Inserted into Routed posts

Plastic Tipped Rail Ends

~ Ends won't scratch posts when inserting / less touch ups

\*\*\*\*\*

Classic "Spear" top is Standard

~ Or Upgrade to Triad or Quad Style Decorative picket top,

Touch up paint Included with each order

~ Provides a Perfect match if needed in the future

Hidden Picket Fasteners

~ No unsightly screws to stick out or loosen

Gates 4'-5'-6' standard

~ or Custom size Gates at no additional charge/Flexible design feature

Gate Posts available in 4"

~ Added Strength and Accent to Gates or Ends

Post Stiffener Inserts used in Gate Posts

~ Strongest post set up available = Long term, proper function of gates

Choice of Gate Hardware

~ Choose the best Function and Safety feature for your circumstance

\*\*\*\*\*

Ships on 'Digger Specialists Manufacturing' truck

~ Company delivery is preferred for damage prevention

Foam Wrapping inside Cardboard Packaging

~ Prevents damage to paint and products during shipping

This outstanding product is Only Available from **Phillips Fencing, Inc.**

2726 Larson Street – La Crosse, WI 54603

608-783-4200

## **Courtyard Aluminum Fence – Powder Coat Process**

Super Durable TGIC Life-time Warranty for Peeling and Weather

The process used for all, properly done, powder coat finishes is as follows:

**Courtyard Aluminum is cleaned well & rinsed in Deionized water for an ultra clean surface.**

Prepared with phosphate creates a slightly porous surface, so the paint adheres well.

Conversion = bites into surface so paint won't creep

> Rinsed well      >Sealer applied>      Pre-heated      >Dried Completely

**Powder coat is "Electrostaticly" Applied and Baked on**

Electrostaticly application w/100,000 volts and baked @450 degrees

As plastic powder is applied it melts. The thermo setting binds it to the aluminum

**Components are individually coated before assembly**

Better Coverage for a perfect finished look with out seams or gaps

**Most Chemicals will not affect this powder; Not true with regular paint and enamel**

>Better Fade Resistance      >Passes Salt Tests

>Durable      >Impact Resistant

>Won't peel >More scratch resistant than enamel

**We have the following notes from our Aluminum Manufacturer;**

**Note :** Regarding the issue of fading –

There may (and probably will be) a slight fading after about 5 years due to UV rays.

Gloss fades in first 7 years

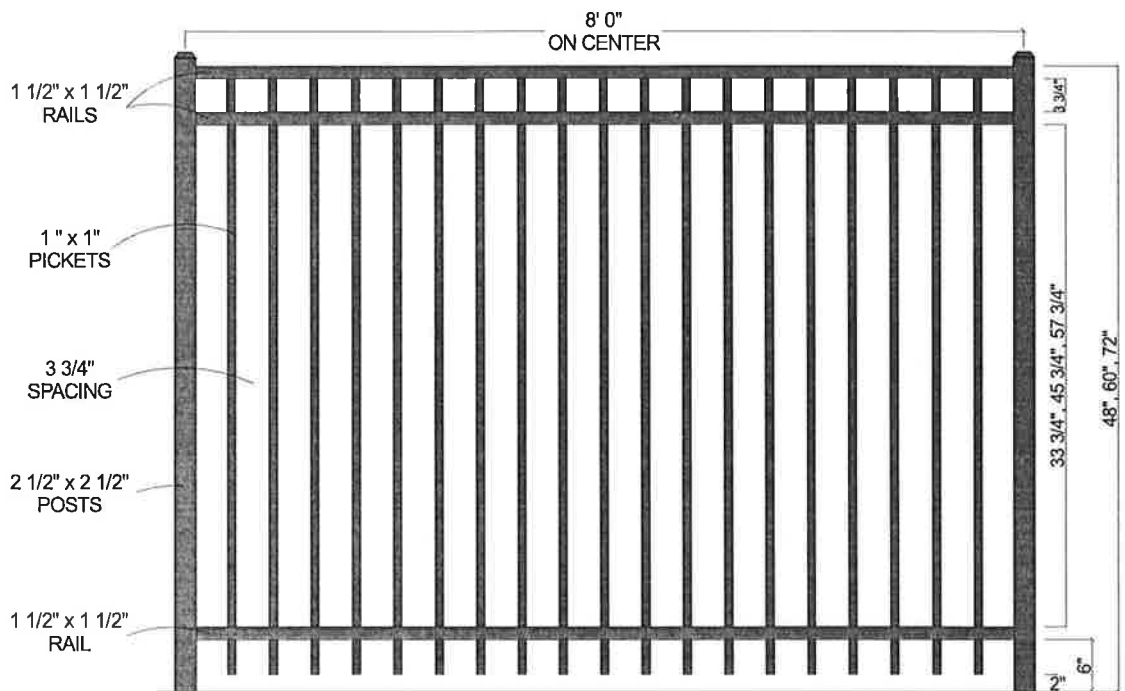
This is true with any and all painted and /or powder coated products.

**Courtyard Fence Products come with a written warranty upon completion**

Materials will take 3 weeks

Thanks,

Lauri & Tom



| Post Size |                          |
|-----------|--------------------------|
| 48" Tall  | 2 1/2" x 2 1/2" x 6 1/2' |
| 60" Tall  | 2 1/2" x 2 1/2" x 7 1/2' |
| 72" Tall  | 2 1/2" x 2 1/2" x 8 1/2' |



## CourtYard® Aluminum Fence

Scale: 3/32" = 1"

Date: 4/01/09

Drawn By: J.D.S.

Revised:

**2230** (3-Rail Flat Top)

As Shown:

6' x 72" 2230

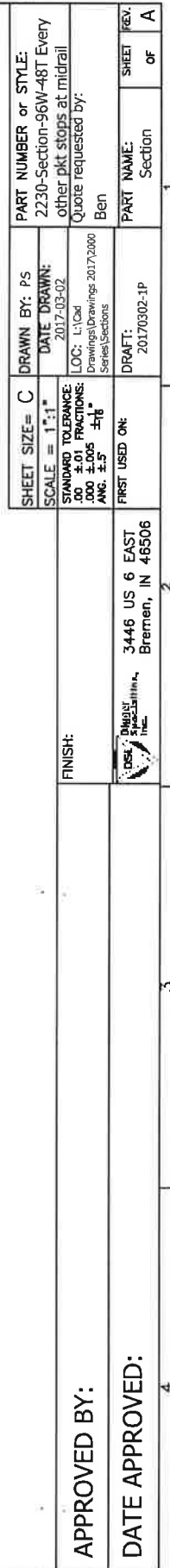
Drawing Number:

2230



Special length sections will have odd number of pickets and have the same configuration as the 8' section.

7' Section will have 17 pickets.

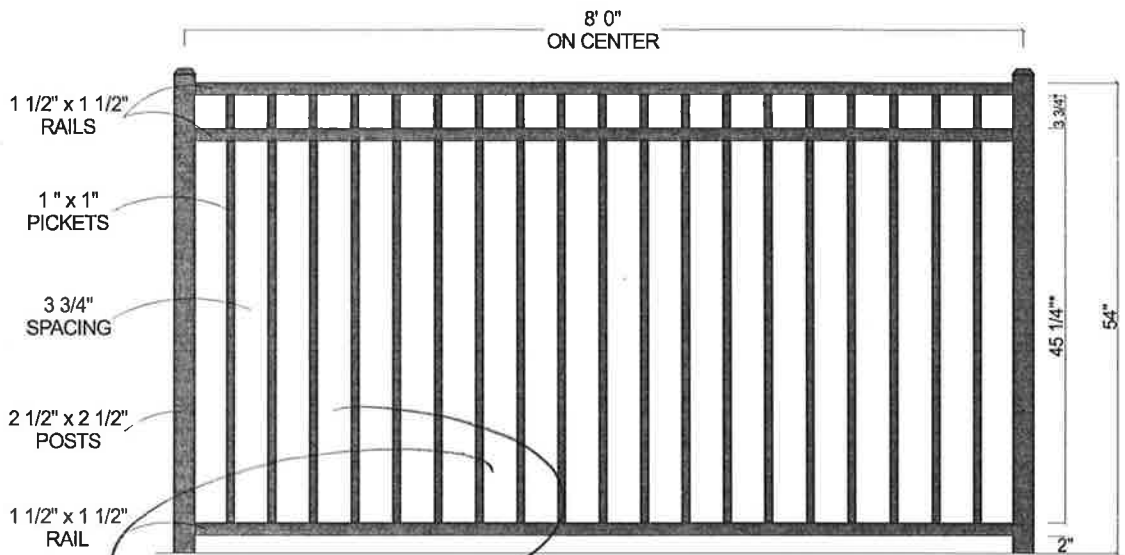


DATE APPROVED:

3446 US 6 EAST  
Bremen, IN 46506

|  |  |   |                  |
|--|--|---|------------------|
| SHEET SIZE= C  | DRAWN BY: P5   | PART NUMBER or STYLE:                                 |                  |
|  |  | 2230-Section-96W-48T Every other pkt stops at midrail |                  |
| SCALE = 1"=1'  | DATE: 03/02  | Quote requested by:                                   |                  |
| STANDARD TOLERANCE:<br>FRACTIONS: 1/16, 1/8, 3/16, 1/4, 3/8, 1/2, 5/8, 3/4, 7/8<br>DECIMALS: .000, .005, .010, .015, .020, .030, .040, .050, .060, .070, .080, .090, .100<br>ANG. ±.5° | LOC: L1/CAD<br>Drawings/Drawings 2017/2000 Series/Sections | Ben   |                  |
| FIRST USED ON:   | DRAFT: 2017/0302-1P  | PART NAME: Section                                    | SHEET REV. OF: A |





| Post Size |                      |
|-----------|----------------------|
| 54" Tall  | 2 1/2" x 2 1/2" x 7' |



| CourtYard® Aluminum Fence     |                 |                  |
|-------------------------------|-----------------|------------------|
| Scale: 3/32" = 1"             |                 | Drawn By: J.D.S. |
| Date: 4/01/09                 |                 | Revised:         |
| <b>2230 (3-Rail Flat Top)</b> |                 |                  |
| As Shown:                     | Drawing Number: |                  |
| 8' x 54" 2230                 | 2230-54         |                  |

Dropped Bottom Rail





# Aluminum Fencing

(All photos are actual installs by Phillips Fencing)



**1230 (3 Rail Flat Top w/ Short Picket)**



**1131 (3 Rail w/ Triad Points)**



**1124 (Commercial Arched Picket)**



**1220 (2 Rail Flat Top)**



**Designer Fence w/ Courtyard**



**Court Yard (Mounted w/ Step-downs)**

***“Good Fences Make Good Neighbors”***



# Aluminum Fencing

(All photos are actual installs by Phillips Fencing)



CourtYard® Aluminum Fence represents elegance and beauty that only nature can match. This premier aluminum fence product offers you hidden picket fasteners, no unsightly screws, many styles and accent choices, many powder-coated finish options, and a transferable lifetime warranty. With all of these options available, how will you define your outdoor living space?



**1132 (3 Rail w/ Alt. Spear Points)**



**1230 (3 Rail w/ Alt. Picket)**



**1233 (3 Rail Flat Top w/ Alt. Triads)**



**1132 (3 Rail w/ Alt. Triad Points)**



**Quad Points**



**Ring Option**



**Double-Swing Gates**

2726 Larson Street  
La Crosse, WI 54603

Check us out on the web @  
[www.phillipsfencing.com](http://www.phillipsfencing.com)

Phone: 608-783-4200  
Fax: 608-783-4210  
[sales@phillipsfencing.com](mailto:sales@phillipsfencing.com)

**"Good Fences Make Good Neighbors"**



# Chain Link Fencing



(All photos are actual installs by Phillips Fencing)

This chain link system is a galvanized product with a combination of vinyl extruded and powder-coated finishes. Residential & Commercial gauges available; Offered in Brown, Green, & Black; Heights of 3', 3 & 1/2', 4', 5', 6', 7', 8', 10' & 12'. Accompanied by a 20 year warranty.



**Brown Vinyl-Coated Chain Link**



**Green Vinyl-Coated Chain Link**



**Black Vinyl-Coated Chain Link**

***"Good Fences Make Good Neighbors"***



# Chain Link Fencing

(All photos are actual installs by Phillips Fencing)



Nothing beats our maintenance free 9 gauge Aluminized-Coated Steel Chain Link fabric for durability and rust-prevention.

Available in 3', 3 1/2', 4, 5, 6', 7', 8', 10', and 12' heights. Also available in commercial 6 gauge.

Meets ASTM Specification A 491, and is accompanied by a 30 Year Warranty.



**9 Gauge Aluminized-Coated Steel Chain Link**



**Commercial**



**Privacy Decorative Slats**

2726 Larson Street  
La Crosse, WI 54603

Check us out on the web @  
[www.phillipsfencing.com](http://www.phillipsfencing.com)

Phone: 608-783-4200  
Fax: 608-783-4210  
[sales@phillipsfencing.com](mailto:sales@phillipsfencing.com)

***"Good Fences Make Good Neighbors"***