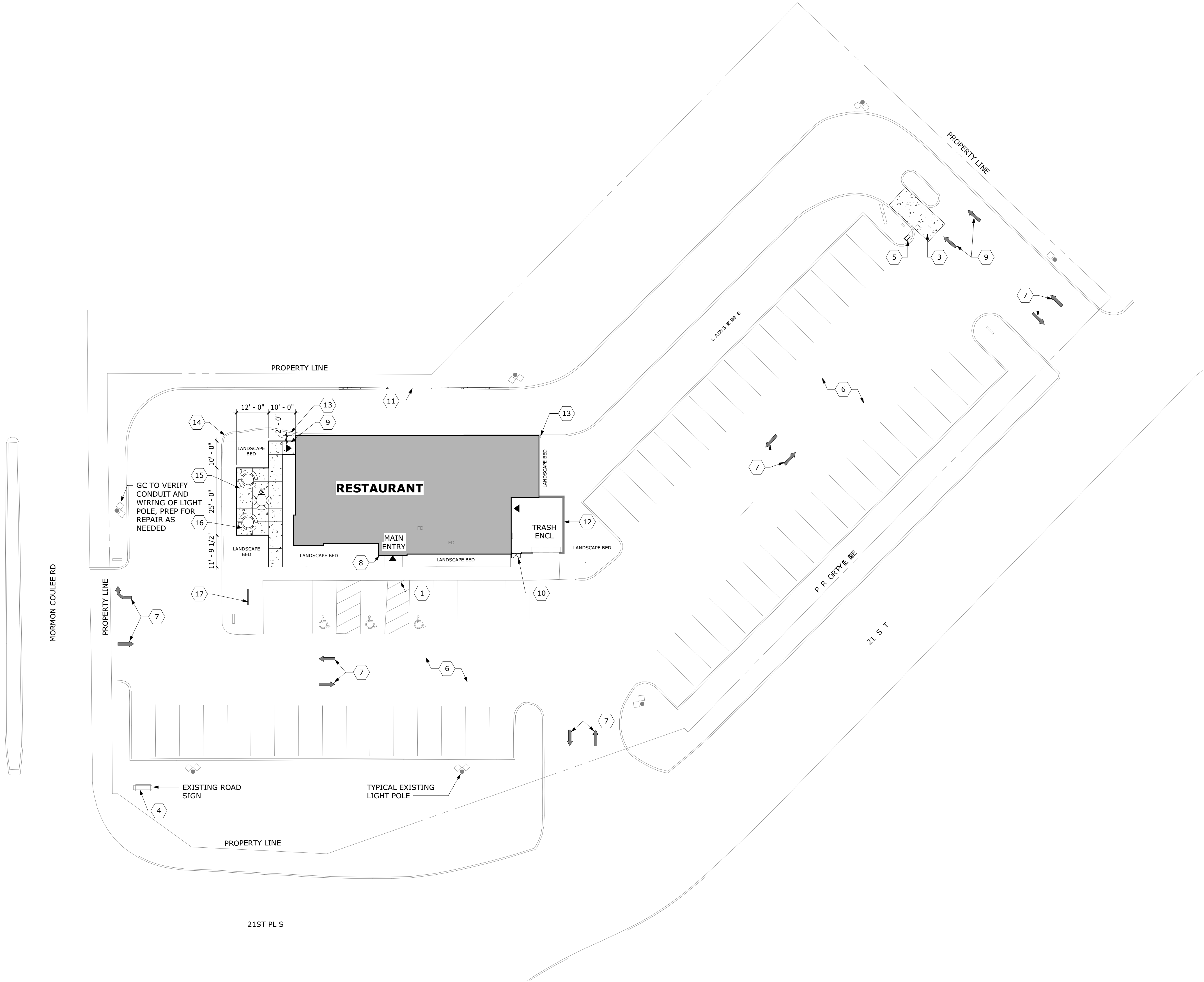


1 SITE PLAN
1" = 20'-0"



GENERAL SITE NOTES:

1. ALL EXISTING ITEMS ARE SHOWN IN APPROXIMATION. GC TO VERIFY EXACT LOCATION BEFORE BEGINNING CONSTRUCTION.
2. PATCH AND REPAIR BIT PAVING IN PARKING AREAS. OWNER TO PROVIDE ALLOWANCE AND CONFIRM EXTENT OF REPAIRS PRIOR TO BIDDING.
3. PROVIDE UNIT PRICE PER SQUARE FOOT TO SAWCUT AND REMOVE EXISTING CONCRETE, PREPARE BASE, AND INSTALL NEW CONCRETE/ASPHALT TO MATCH EXISTING.
4. PROVIDE UNIT PRICE PER SQUARE FOOT TO SAWCUT AND REMOVE EXISTING CONCRETE CURB, PREPARE BASE, AND INSTALL NEW CONCRETE CURB TO MATCH EXISTING. OWNER TO PROVIDE ALLOWANCE PRIOR TO BIDDING.
5. RE-STRIP LOT AS SHOWN ON SITE PLAN. PARKING LOT STRIPING TO BE LEAD-FREE HEAVY WHITE ZONE MARKING PAINT, SPRAY APPLIED AS SHOWN ON SITE PLAN, WITH IN PROPERTY LINE.
6. FILL ALL CRACKS OVER 3/8" WITH ELASTOMERIC FILL. GC TO VERIFY COMPOUND PRIOR TO BIDDING. CONFIRM EXTENT OF REPAIRS WITH OWNER PRIOR TO BIDDING.
7. SEALCOAT LOT, WITH IN PROPERTY LINE. CONFIRM EXTENT WITH OWNER PRIOR TO BIDDING.
8. LANDSCAPE UPGRADES BY OWNER. GC TO COORDINATE WITH LANDSCAPE CONTRACTOR.
9. GC TO INSTALL NEW FOUNDATION SYSTEM AND POWER/DATA SYSTEM AS REQ'D. FOR NEW CLEARANCE BAR, PREVIEW BOARD, ORDER CONFIRMATION UNIT, AND MENU BOARD. COORDINATE WITH SIGNAGE VENDOR AND REFER TO PREFERRED LAYOUT ON SHEET A11.
10. LANDSCAPE DESIGNER TO UPGRADE LANDSCAPE AREAS, REMOVE WEEDS FROM GRAVEL PORTIONS, THIN/PRUNE OVERGROWN PLANTINGS TO IMPROVE VISIBILITY AT DRIVE THRU AND FROM STREETS. REMOVE/ ALTER PLANTINGS AT NEW MENUBOARD LOCATION.
11. REPLACE ALL BLUE LID OUTDOOR TRASH RECEPTACLES WITH BK STANDARD BLACK LIDS; BY OWNER
12. REMOVE EXISTING LOOP DETECTION SYSTEM. THE NEW LOOP DETECTION SYSTEM IS SUPPLIED BY OWNER AND INSTALLED BY GC COORDINATE LOCATION WITH ORDER CONFIRMATION UNIT AND SIGNAGE SUPPLIER
13. GC TO VERIFY THAT THE ACCESSIBLE PARKING SPACES AND ACCESS AISLES HAVE A SURFACE SLOPE NOT STEEPER THAN 1:48; COORDINATE WITH ARCHITECT AND OWNER IF THE SLOPE IS EXCEEDED.

SITE PLAN KEY NOTES:

- 1 THE OWNER WOULD LIKE TO KEEP THE EXISTING CURB CUT; GC TO VERIFY IN FIELD CONDITIONS TO SEE IF IT CAN REMAIN AND CONSTRUCTION CAN GO AROUND IT; GC TO PROVIDE AN ALTERNATE BID TO REPLACE THE CURB CUT; USE DETAIL 7 / A12 FOR THE BID AND REPLACEMENT IF NEEDED.
- 2 EXISTING DIRECTIONAL SIGN, PRIME AND PAINT; REFACE TO NEW IMAGE; BY SIGNAGE CONTRACTOR
- 3 NEW 6" CONCRETE W/ 6x6 - W2.1 x W2.1 WWF ON 4" COMPACTED GRANULAR BASE
- 4 PYLON/ROAD SIGN, PRIME AND PAINT POLE AND CABINET; BY SIGNAGE CONTRACTOR
- 5 GC TO INSTALL NEW FOUNDATION FOR CLEARANCE BAR. CLEARANCE BAR INSTALLED BY SIGNAGE COMPANY, SEE DETAIL 4 / A12
- 6 NEW SEALCOAT AND PARKING STRIPING
- 7 NEW PAVEMENT MARKINGS; SEE 5 / A12
- 8 ACCESSIBLE VAN PARKING MOUNTED ON WALL/MULLION CLOSEST TO THE CENTER OF THE PARKING STALL, FOR MOUNTING HEIGHT AND MORE INFORMATION SEE DETAIL 6 / A12
- 9 NEW 5'-0" x 5'-0" CONCRETE STOOP; SEE DETAIL
NEW STEEL FRAME, PAINT TO MATCH EP-4G; CLAD FRAMES WITH NEW 6" COMPOSITE DECKING (TREX OR SIMILAR) INSTALL VERTICAL WITH 1/8" GAP; PAINT TO MATCH EP-4G; REPLACE EXISTING DROP PINS ON GATE AND INSTALL SLEEVE; SEE DETAIL 2 / A12
- 11 PATCH CONCRETE CURB AND GUTTER, MATCH EXISTING ADJACENT; VERIFY IN FIELD; SIMILAR TO DETAIL 3 / A12
- 12 PROVIDE NEW COPING AT EXISTING TRASH ENCLOSURE, PROVIDE CONTINUOUS SEALANT; SEE EXTERIOR ELEVATIONS
- 13 EXISTING BOLLARD; PAINT TO MATCH EXISTING
- 14 EXISTING CURB TO REMAIN
- 15 CONCRETE PATIO/WALK ON COMPACTED FILL BASE
- 16 RELOCATED PATIO FURNITURE WITH ACCESSIBLE SEATING
- 17 BIKE RACK; ITEM #MF9009 AS MANUFACTURED BY WAUSAU TILE; COLOR TO BE #72-ALUMINUM

SITE SURVEY NOTE:

THE SITE SURVEY INFORMATION SHOWN ON THESE DRAWINGS ARE BASED ON A SCAN OF A SURVEY THAT WAS PROVIDED BY THE OWNER FROM PREVIOUS WORK ON THIS SITE AND CASUAL FIELD OBSERVATIONS. THE DRAWING IS DATED 11-29-2017 AND HAS NOT BEEN VERIFIED IN FIELD FOR THIS PROJECT.



KOMA
ARCHITECTS | DESIGNERS | ENGINEERS
6115 CAHILL AVE, INVER GROVE HEIGHTS, MN 55076
P. 651.451.4605 KOMAINC.COM

THE DESIGNS AND PLANS INDICATED ON THIS DRAWING ARE THE PROPERTY OF KRECH, O'BRIEN, MUELLER & ASSOCIATES, INC. ALL RIGHTS ARE RESERVED. NO DESIGNS OR PLANS SHALL BE USED OR REPRODUCED IN ANY FORM OR BY ANY MEANS WITHOUT THE WRITTEN PERMISSION OF KRECH, O'BRIEN, MUELLER & ASSOCIATES, INC.

DATE: _____ REG. NO.: _____

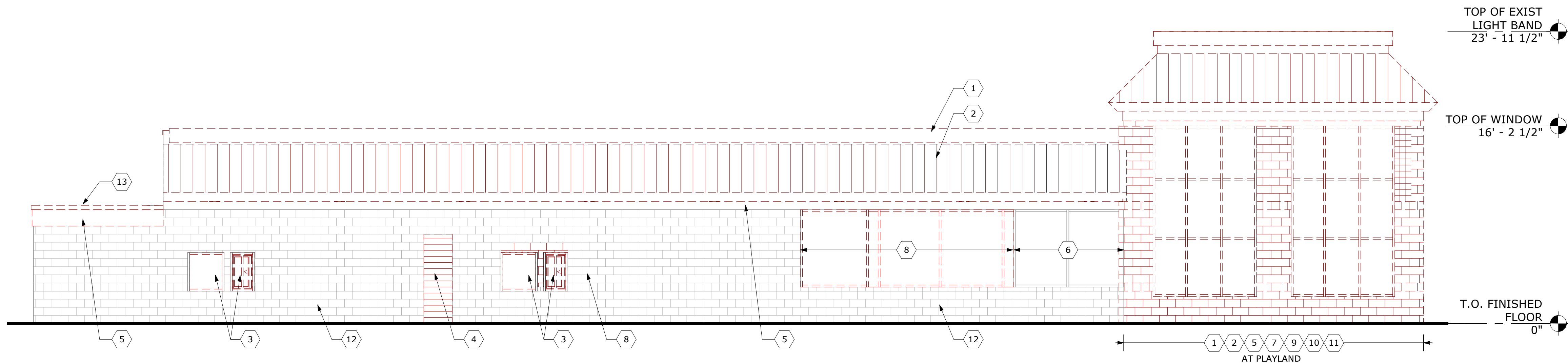
SITE PLAN

BURGER KING (STR #12918)
3519 MORMON COULEE RD
LACROSSE, WI

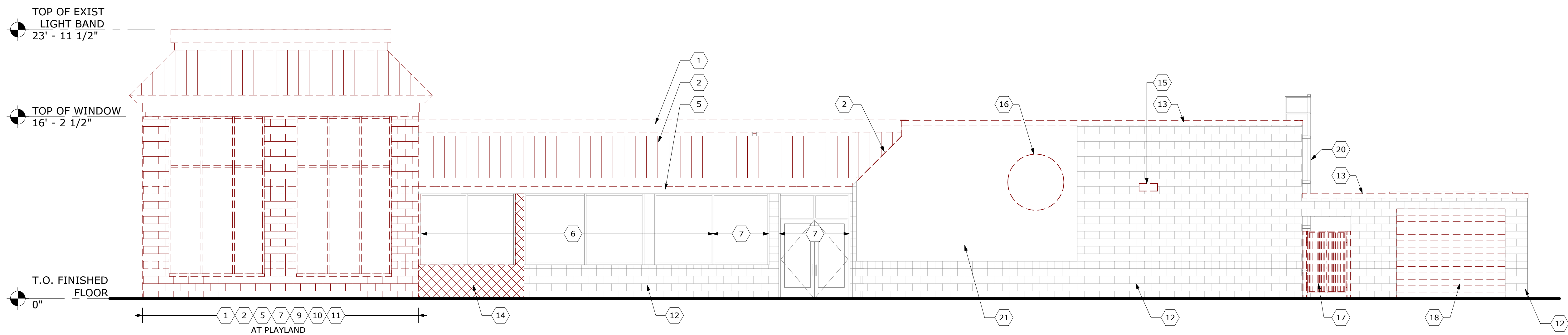
PROJECT: 17076
DRAWN BY: Author
CHECKED BY: Checker
DATE: 03.29.2018
REVISIONS:

PRELIMINARY:
NOT FOR
CONSTRUCTION

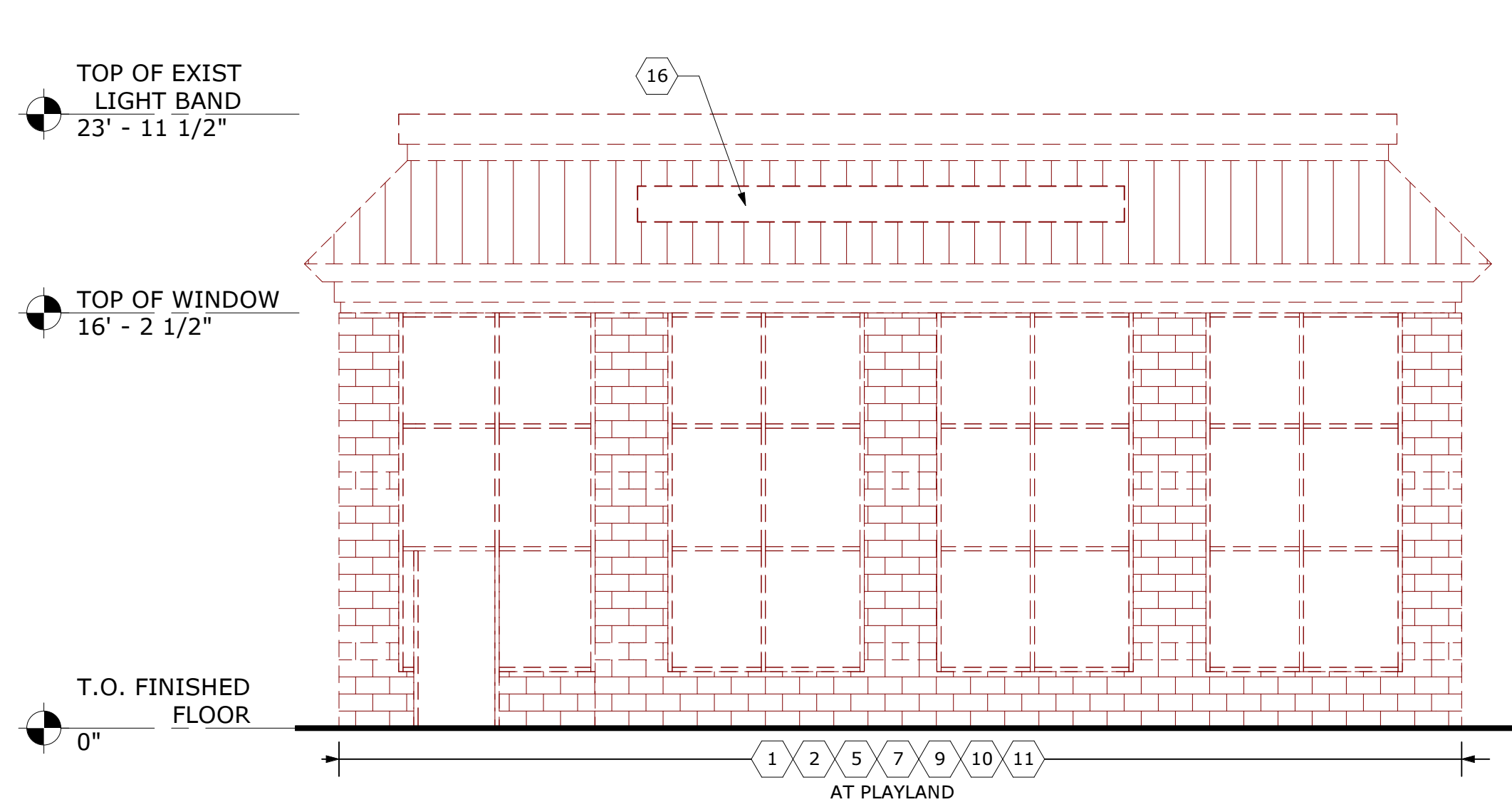
A11



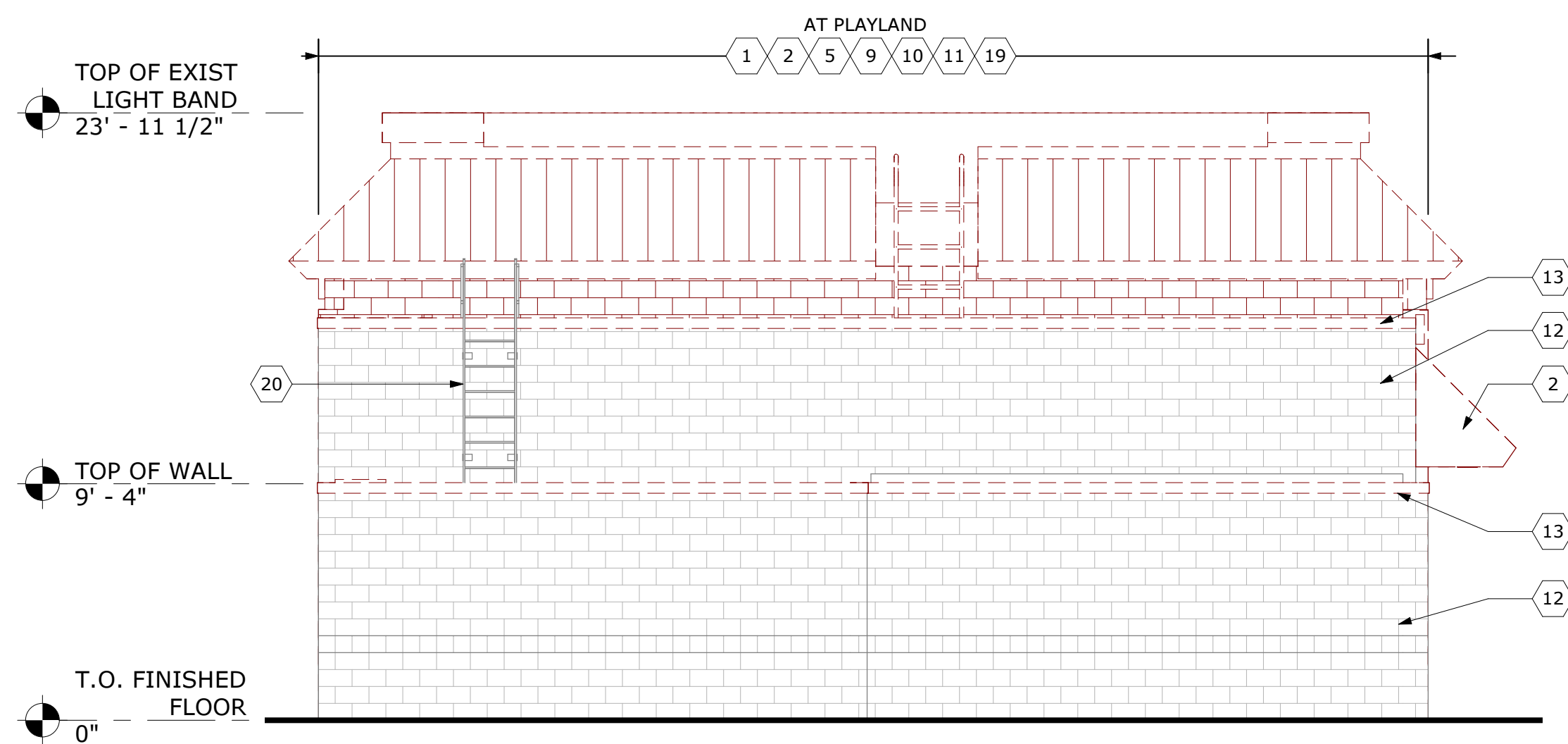
1 DEMO WEST ELEVATION
3/16" = 1'-0"



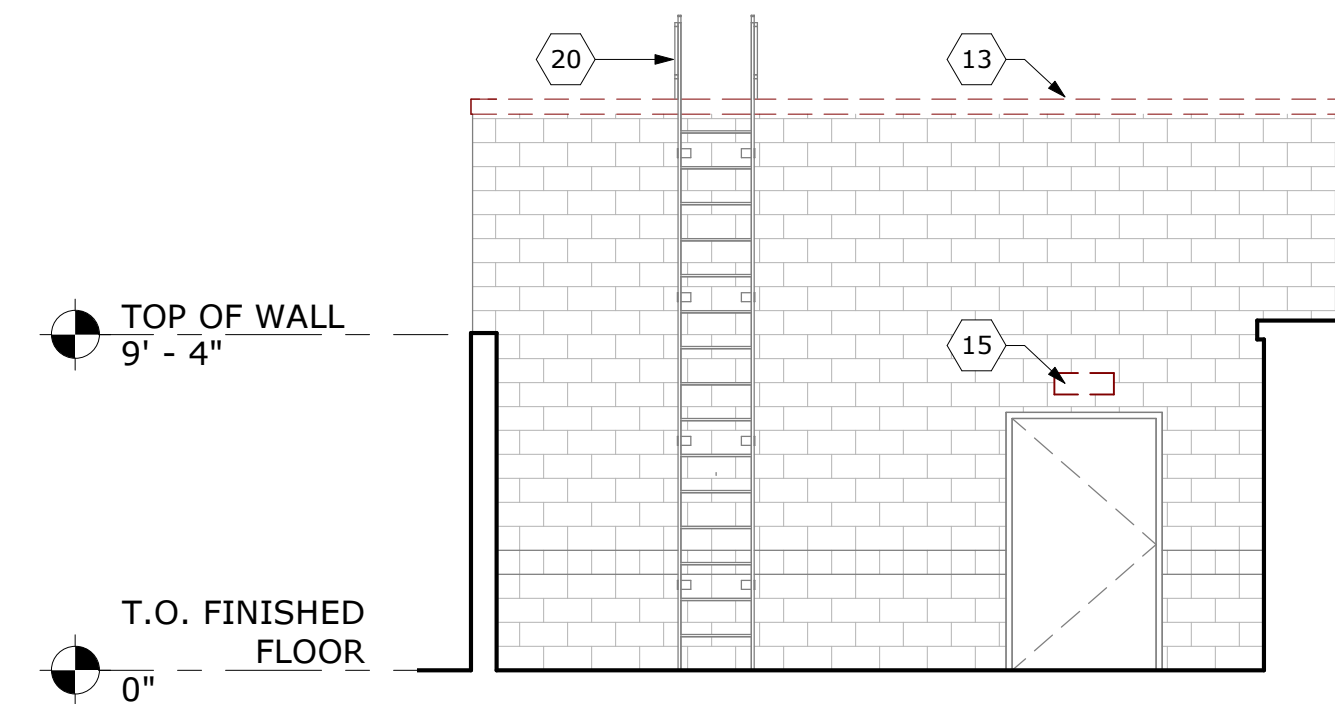
2 DEMO EAST ELEVATION
3/16" = 1'-0"



3 DEMO SOUTH ELEVATION
3/16" = 1'-0"



4 DEMO NORTH ELEVATION
3/16" = 1'-0"



5 DEMO NORTH ELEVATION 2
3/16" = 1'-0"

GENERAL DEMOLITION NOTES:

1. GRAY AREA AND DASHED LINES INDICATE EXTENT OF DEMOLITION FOR EXISTING SIDING, TRIM, PORTION OF MANSARD, AND BRICK VENEER/SILL
2. REFER TO WALL SECTION SHEETS FOR ANY SPECIFIC EXISTING CONDITIONS
3. REFER TO SHEET A20 FOR GENERAL DEMO NOTES
4. DEMOLISH ALL PARAPET COPING AND PREPARE FOR NEW

DEMOLITION KEY NOTES:

- 1 DEMOLISH EXISTING LIGHT BAND
- 2 DEMOLISH MANSARD OVERHANG
- 3 DEMOLISH EXISTING DRIVE-THRU WINDOW AND SIDELIGHT
- 4 DEMOLISH LAP SIDING, PREP FOR CMU
- 5 DEMOLISH WOOD FASCIA BOARD
- 6 TYPICAL STOREFRONT TO REMAIN; PROVIDE BID ALTERNATE TO REMOVE EXISTING WEATHERSTRIPPING AND REPLACE
- 7 DEMOLISH STOREFRONT
- 8 REMOVE AND SALVAGE STOREFRONT FOR REINSTALLATION
- 9 DEMOLISH EXISTING WALL, FULL HEIGHT
- 10 DEMOLISH BUILDING STRUCTURE
- 11 DEMOLISH ROOF
- 12 TYPICAL BLOCK TO REMAIN
- 13 DEMOLISH COPING
- 14 AT HATCH AREA DEMOLISH SILL, CMU BELOW STOREFRONT, AND BREAK METAL AT STOREFRONT, PREP FOR NEW FINISHES
- 15 DEMOLISH LIGHT FIXTURE, PREP FOR NEW FIXTURE IN SAME LOCATION
- 16 DEMOLISH SIGNAGE
- 17 DEMOLISH GATE, SEE SITE PLAN FOR DETAILS
- 18 DEMOLISH OVERHEAD DOOR
- 19 DEMOLISH ROOF ACCESS LADDER
- 20 EXISTING LADDER TO REMAIN
- 21 EXISTING EIFS TO REMAIN



ARCHITECTS | DESIGNERS | ENGINEERS
6115 CAHILL AVE, INVER GROVE HEIGHTS, MN 55076
P. 651.451.4605 KOMAINC.COM

THE DESIGNS AND PLANS INDICATED ON THIS DRAWING ARE THE PROPERTY OF KRECH, O'BRIEN, MUELLER & ASSOCIATES, INC. ALL RIGHTS ARE RESERVED. NO DESIGNS OR PLANS SHALL BE USED OR REPRODUCED IN ANY FORM OR BY ANY MEANS WITHOUT THE WRITTEN PERMISSION OF KRECH, O'BRIEN, MUELLER & ASSOCIATES, INC.

DATE: _____ REG. NO.: _____

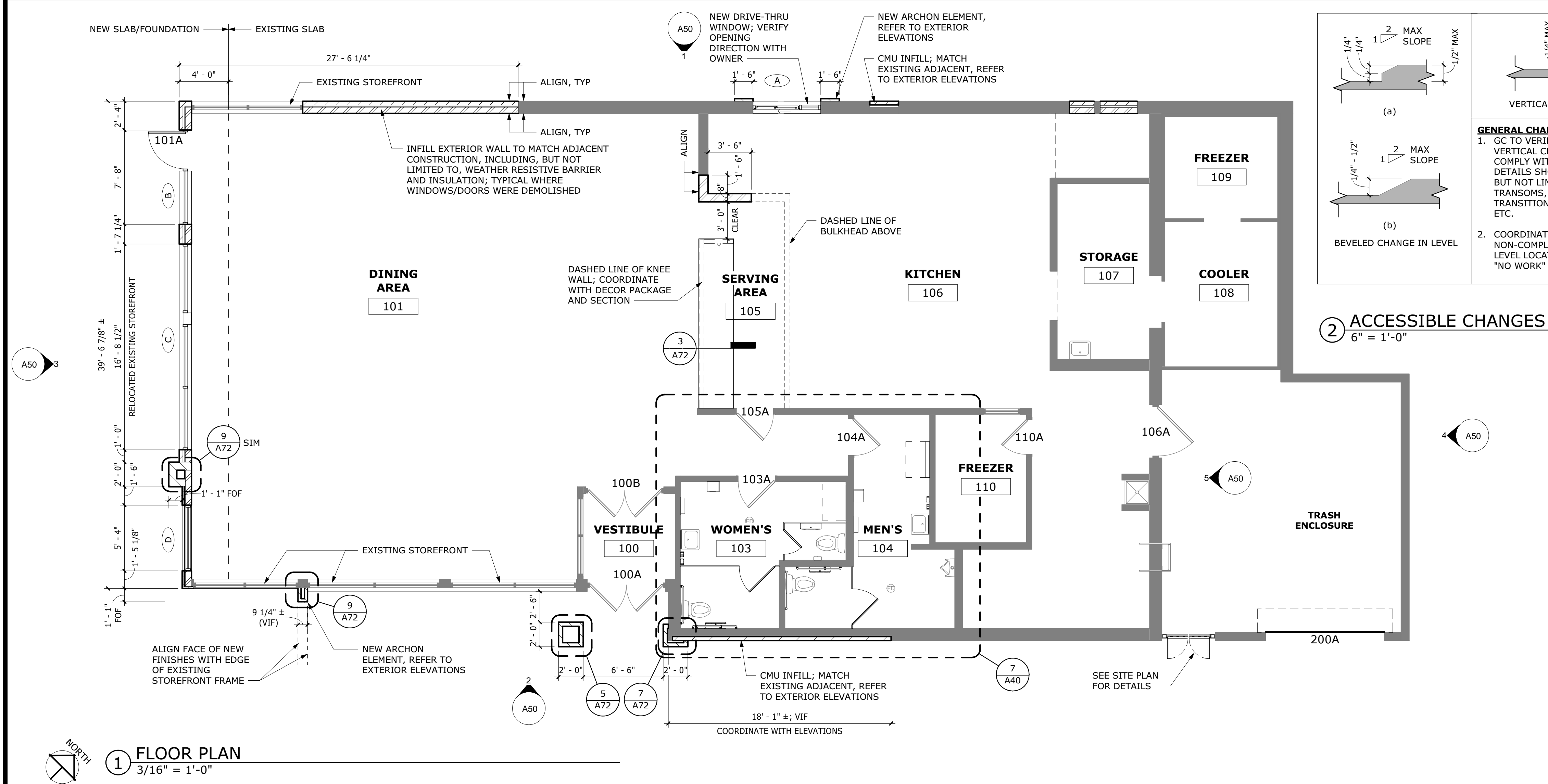
DEMOLITION ELEVATIONS

BURGER KING (STR #12918)
3519 MORMON COULEE RD
LACROSSE, WI

PROJECT: 17076
DRAWN BY: LAS
CHECKED BY: STI
DATE: 03.29.2018
REVISIONS:

PRELIMINARY:
NOT FOR
CONSTRUCTION

A21

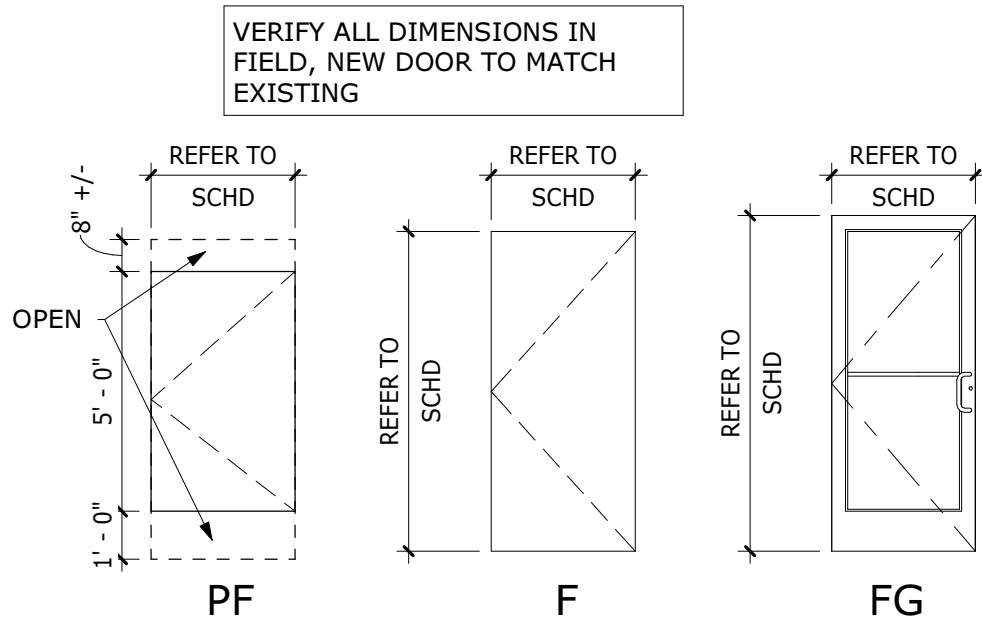


1 FLOOR PLAN
3/16" = 1'-0"

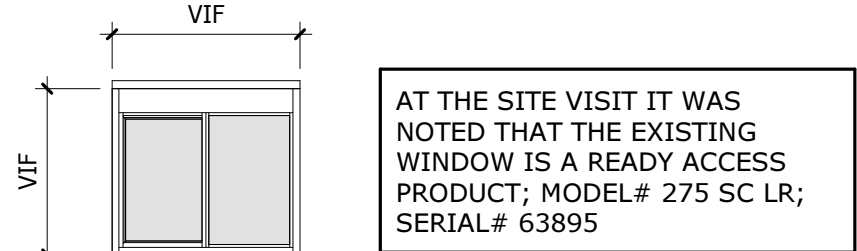
2 ACCESSIBLE CHANGES IN LEVEL
6" = 1'-0"

GENERAL FLOOR PLAN NOTES:

- REFER TO EXTERIOR ELEVATIONS, WALL SECTIONS, AND DETAILS FOR CONSTRUCTION/FINISHES OF NEW BUILT-OUT ELEMENTS.
- REFER TO EXTERIOR ELEVATIONS FOR EXTENT OF NEW EXTERIOR FINISHES AND TYPICAL EXTERIOR NOTES.
- GC TO INSTALL ALL NEW INTERIOR FINISHES THROUGHOUT. REFER TO DECOR DRAWINGS FOR SPECIFICATIONS AND VERIFY SELECTIONS WITH OWNER PRIOR TO ORDERING.
- PRELIMINARY FURNITURE LAYOUT SHOWN, REFER TO DECOR PACKAGE FOR FINAL FURNITURE LAYOUT AND INTERIOR FINISHES (TYP.)
- INSTALL NEW CONVENIENCE ELECTRICAL OUTLETS IN DINING ROOM FOR CUSTOMERS, GC TO COORDINATE WITH DECOR PACKAGE (SUGGESTED LOCATIONS ON DECOR DRAWINGS, SOME MAY REQUIRE CONDUIT CUT INTO SLAB OR DROPPED DOWN FROM CEILING THRU DECORATIVE SCREEN.) AND OWNER FOR QUANTITY AND LOCATIONS. GC TO PROVIDE POWER AND CABLE TV/SAT CONNECTIONS FOR WALL MOUNTED TV (SEE DECOR PACKAGE FOR LOCATION). GC TO PROVIDE ELECTRICAL FOR WALL MOUNTED LIGHTS IF CALLED OUT BY DECOR PACKAGE (SEE DECOR INTERIOR ELEVATIONS/ PLANS)
- GC TO VERIFY OPERATION OF ALL EXISTING DOOR CLOSERS AND HARDWARE TO REMAIN. CLOSERS TO PROVIDE A MAXIMUM 5LBS OPERATING FORCE AND A CLOSING SPEED OF 5 SECONDS MIN. CONTACT OWNER IF FAULTY CLOSERS AND HARDWARE ARE FOUND.

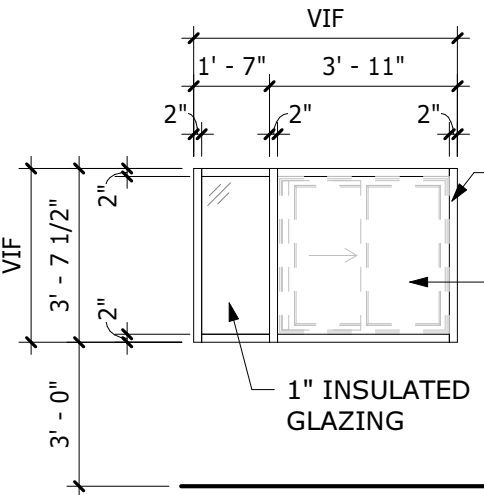


DOOR TYPES
1/4" = 1'-0"

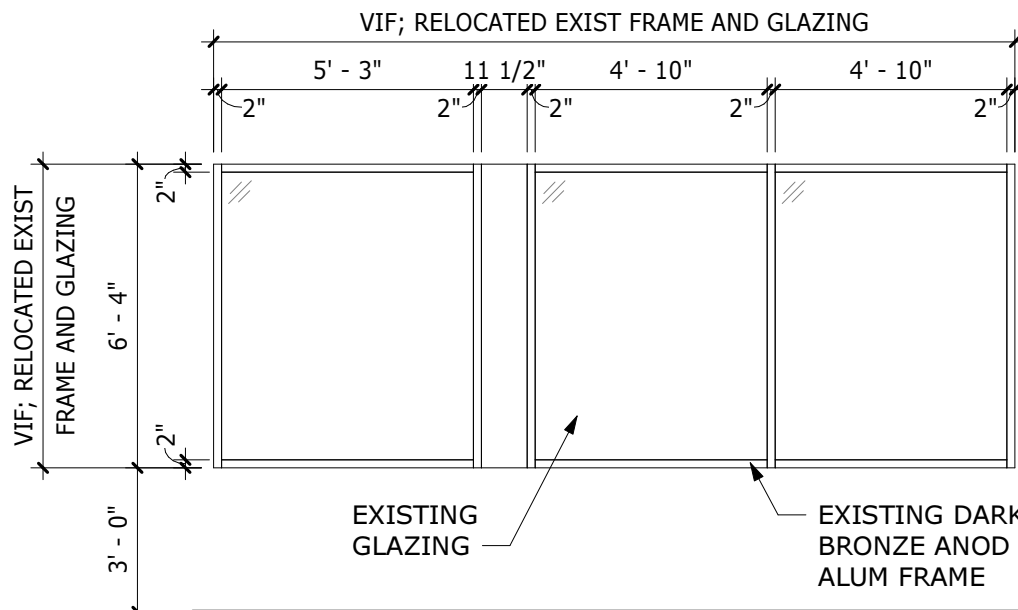


SELF-CLOSING DRIVE-THRU WINDOW:
MATCH EXISTING SLIDER IN PLACE, FIELD VERIFY DIMENSIONS, MATCH EXISTING ADJACENT FINISH

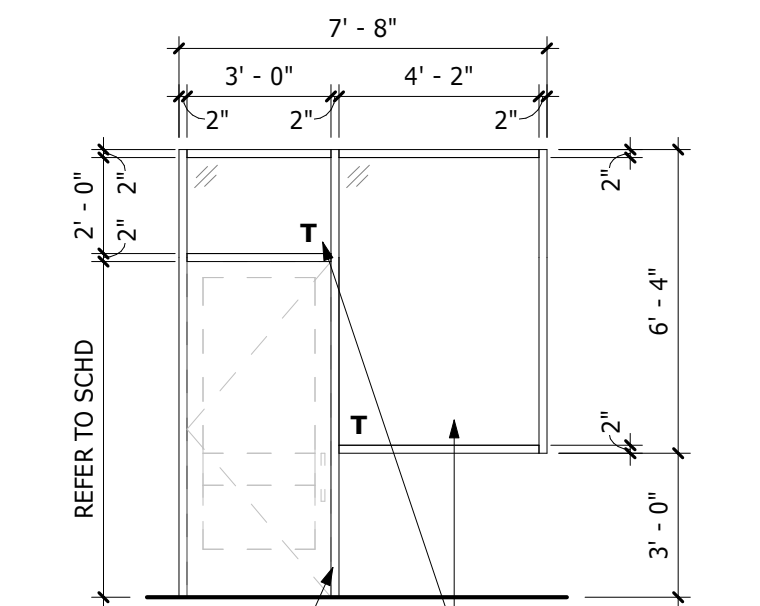
DRIVE-THRU WINDOW
1/4" = 1'-0"



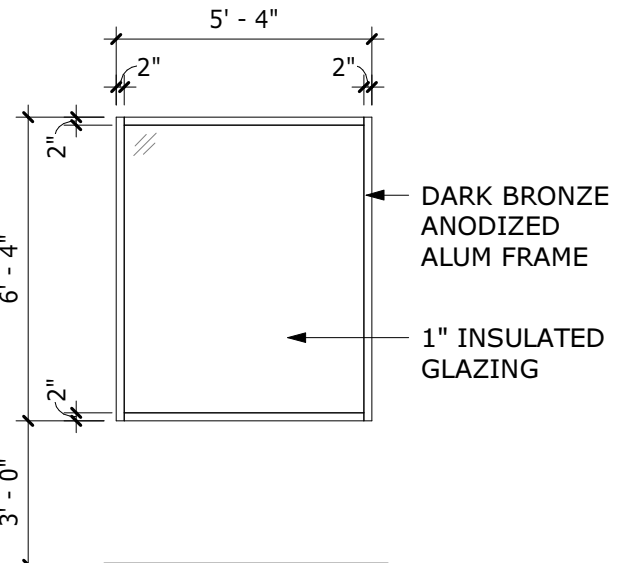
3 TYPE A
1/4" = 1'-0"



5 TYPE C
1/4" = 1'-0"



4 TYPE B
1/4" = 1'-0"



6 TYPE D
1/4" = 1'-0"

HARDWARE GROUPS:

HW SET 01: EXTERIOR DOOR (SHOWN FOR REFERENCE)

HINGES: OFFSET PIVOTS
LOCKSET: ADAMS RITE DEAD BOLT; MS 1852S
CLOSER: NORTON 1605 WITH BACK CHECK
PULL: 9" "CLASSIC" STRAIGHT; POLISHED STAINLESS
THRESHOLD: STANDARD ADA THRESHOLDS
WEATHERSTRIP: BY DOOR SUPPLIER

FLUSH BOLTS: 1 PAIR (DOUBLE DOORS ONLY)

INTERIOR VESTIBULE DOOR: OMIT LOCKS, CYLINDERS, AND THRESHOLDS

NOTE: DUMMY CYLINDERS SHALL BE PROVIDED ON THE EXTERIOR OF ALL DOORS EXCEPT AT MAIN ENTRY.

FUNCTION: PUSH-PULL OPERATION DURING NORMAL BUSINESS HOURS.

HW SET 02: KITCHEN INTERIOR DOOR

HINGES: (3) HAGER; BB1279 4-1/2 x 4-1/2 x 652
LOCKSET: SCHLAGE; AL53PD SAT x 626
CLOSER: LCN 1461 x 689
FLOOR STOP: HAGER 241F x US26D
KICKPLATES: (2) HAGER 193S 10"H x (DR WIDTH - 2") LDW 628 (INSTALL WITH FLAT HEAD PHILLIPS HEAD SCREWS)
SILENCERS: (3) HAGER 307D RBR

SIGN PACKAGE: (1) "KITCHEN" AND CORRESPONDING SIGNAGE IN GRADE TWO BRAILLE PER ADA REQUIREMENTS. SIGNS FURNISHED BY DECOR SUPPLIER. SIGNS INSTALLED BY GC WITH TOP OF SIGN AT 5'-0" AND CENTERED ON DOOR.

FUNCTION: ENTRANCE LOCK, TURN/PUSH-BUTTON LOCKING; PUSHING AND TURNING BUTTON LOCKS OUTSIDE LEVER, REQUIRING USE OF KEY UNTIL BUTTON IS MANUALLY UNLOCKED. INSIDE LEVER ALWAYS UNLOCKED.

HW SET 03: RESTROOM DOORS (SINGLE USE - NO LATCH)

HINGES: (3) HAGER; BB1279 4-1/2 x 4-1/2 x 652
LOCKSET: FALCON; D271 x 626
CLOSER: LCN 1461 x 689
FLOOR STOP: HAGER 241F x US26D
KICKPLATES: (2) HAGER 193S 10"H x (DR WIDTH - 2") LDW 628 (INSTALL WITH FLAT HEAD PHILLIPS HEAD SCREWS)
SILENCERS: (3) HAGER 307D RBR

FUNCTION (SIMILAR TO ANSI E01112): DEADBOLT THROWN OR RETRACTED BY TURN UNIT ONLY. OCCUPANCY INDICATOR ON OUTSIDE (READS EITHER "IN USE" OR "VACANT" WITH COLOR CODING BACKGROUNDS). BOLT AUTOMATICALLY DEADLOCKS WHEN FULLY THROWN. EMERGENCY KEY SUPPLIED.

HW SET 04: KITCHEN EXTERIOR DOOR (42"x84")

REINF PIVOT: HAGER 253 x ZC x HAND REQUIRED
HINGES: (4) HAGER; BB1168 4-1/2 x 4-1/2 x USP x NRP
EXIT DEVICE: VON DUPRIN 22EO x 689
CLOSER: LCN 4115 H-CUSH x TB x 689
KICKPLATES: HAGER 193S 10"H x (DR WIDTH - 2") LDW 628 (INSTALL WITH FLAT HEAD PHILLIPS HEAD SCREWS)
NATIONAL GUARD 325 x 48" x AL
THRESHOLD: NATIONAL GUARD 2001A x 48"
WEATHERSTRIP: (1 SET) NATIONAL GUARD 160SA 1@48", 2@84"
DOOR VIEWER: ROCKWOOD 622 x 626

FUNCTION: ENTRANCE LOCK, TURN/PUSH-BUTTON LOCKING; PUSHING AND TURNING BUTTON LOCKS OUTSIDE LEVER, REQUIRING USE OF KEY UNTIL BUTTON IS MANUALLY UNLOCKED. INSIDE LEVER ALWAYS UNLOCKED.

HW SET 05: KITCHEN DOOR

HINGES: (3) HAGER; BB1279 4-1/2 x 4-1/2 x 652
LOCKSET: SCHLAGE; AL10S SAT x 626
FLOOR STOP: HAGER 241F x US26D
KICKPLATES: (2) HAGER 193S 10"H x (DR WIDTH - 2") LDW 628 (INSTALL WITH FLAT HEAD PHILLIPS HEAD SCREWS)
SILENCERS: (3) HAGER 307D RBR

FUNCTION: PASSAGE

HW SET 06: RESTROOM DOORS (MULTI USE)

HINGES: (3) HAGER; BB1279 4-1/2 x 4-1/2 x 652
CLOSER: LCN 1461 x 689
PUSH PLATE: HAGER 30S 4x16 628
PULL PLATE: HAGER H33E 4x16 628
FLOOR STOP: HAGER 241F x US26D
KICKPLATES: (2) HAGER 193S 10"H x (DR WIDTH - 2") LDW 628 (INSTALL WITH FLAT HEAD PHILLIPS HEAD SCREWS)
SILENCERS: (3) HAGER 307D RBR

FUNCTION: PUSH-PULL OPERATION

HW SET 07: TOILET STALL

HINGES: (3) HAGER; BB1279 4-1/2 x 4-1/2 x 652 FOR NON-ACCESSIBLE STALL; PROVIDE CODE COMPLIANT SELF CLOSING HINGES FOR ACCESSIBLE STALLS
LOCKSET: (1) SCHLAGE; ND40S F76 x 626
WALL STOP: HAGER 234W x US26D
SILENCERS: (2) HAGER 307D RBR
COAT HOOK: (1) COAT HOOK ON STALL SIDE OF DOOR; INSTALL AT ACCESSIBLE HEIGHT OF 48" IN ACCESSIBLE STALLS AND 60" IN OTHER STALLS

FUNCTION: PUSH-BUTTON LOCKING; CAN BE OPENED FRO OUTSIDE WITH SMALL SCREWDRIVER; TURNING INSIDE LEVER OR CLOSING DOOR RELEASES BUTTON.

GENERAL HARDWARE NOTES:

NOTE: NOT ALL HARDWARE SETS SHOWN ARE USED IN THIS PROJECT - VERIFY WITH DOOR SCHEDULE.

- COORDINATE KEYING REQUIREMENTS WITH OWNER
- EXISTING AND NEW DOOR CLOSERS TO BE ADJUSTED TO PROVIDE A MAXIMUM 5 LBS OPERATING FORCE AND A CLOSING SPEED OF 5 SECONDS MINIMUM



ARCHITECTS | DESIGNERS | ENGINEERS
6115 CAHILL AVE, INVER GROVE HEIGHTS, MN 55076
P. 651.451.4605 KOMAINC.COM

THE DESIGNS AND PLANS INDICATED ON THIS DRAWING ARE THE PROPERTY OF KRECH, O'BRIEN, MUELLER & ASSOCIATES, INC. ALL RIGHTS ARE RESERVED. NO DESIGNS OR PLANS SHALL BE USED OR REPRODUCED IN ANY FORM OR BY ANY MEANS WITHOUT THE WRITTEN PERMISSION OF KRECH, O'BRIEN, MUELLER & ASSOCIATES, INC.

DATE: _____ REG. NO.: _____

FLOOR PLAN

BURGER KING (STR #12918)
3519 MORMON COULEE RD
LACROSSE, WI

PROJECT: 17076

DRAWN BY: LAS

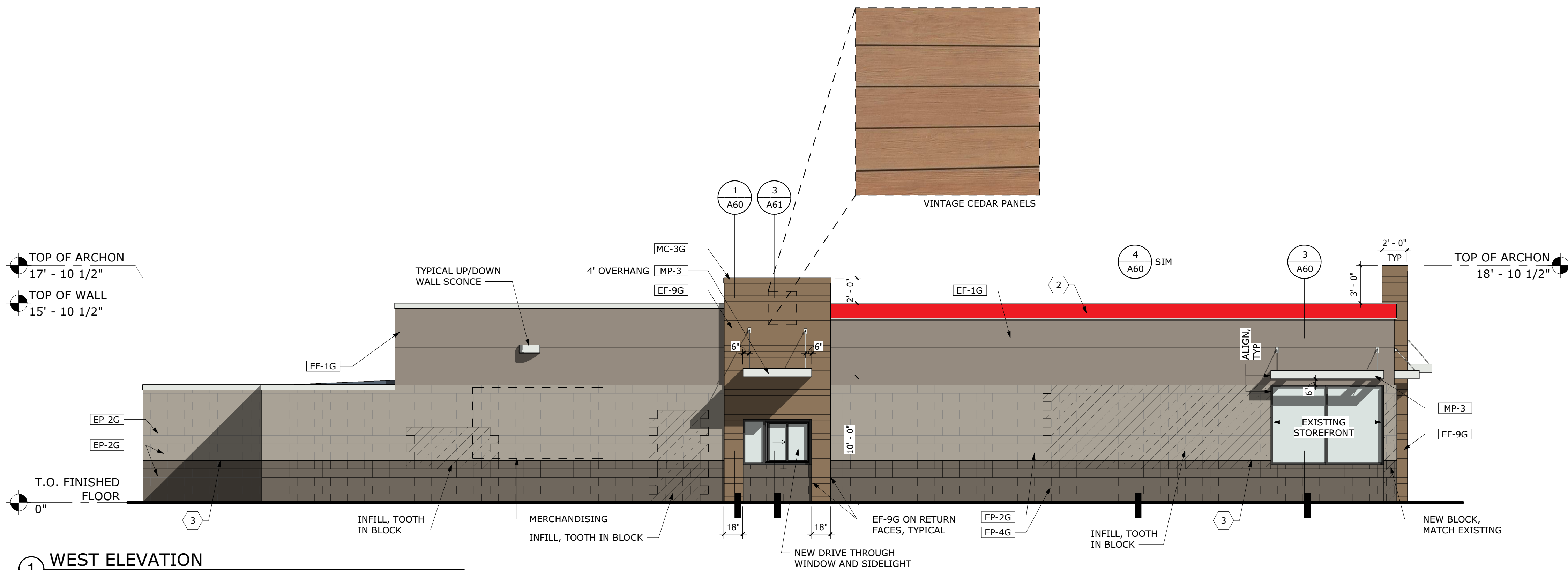
CHECKED BY: STI

DATE: 03.29.2018

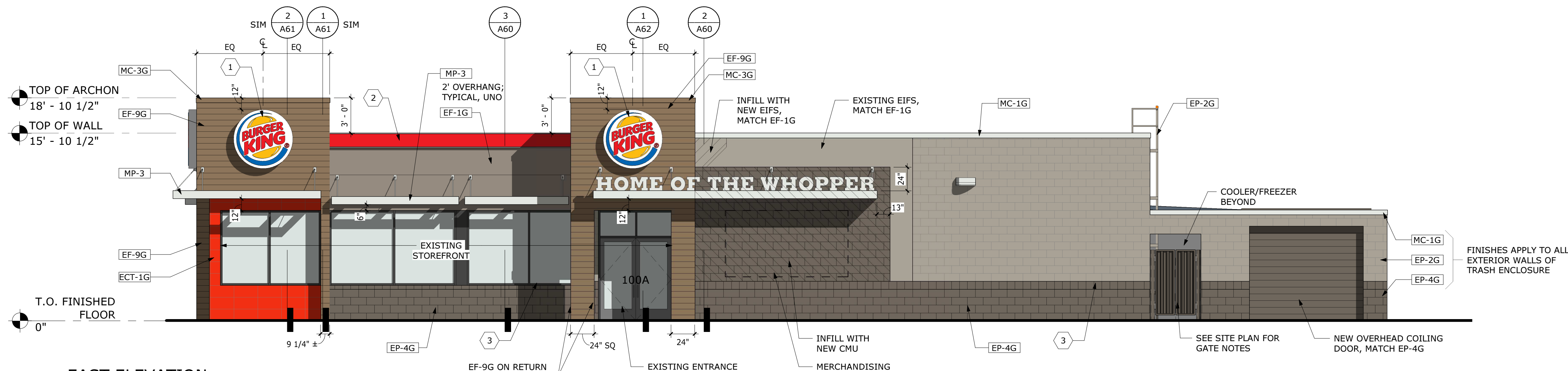
REVISIONS:

PRELIMINARY:
NOT FOR
CONSTRUCTION

A30



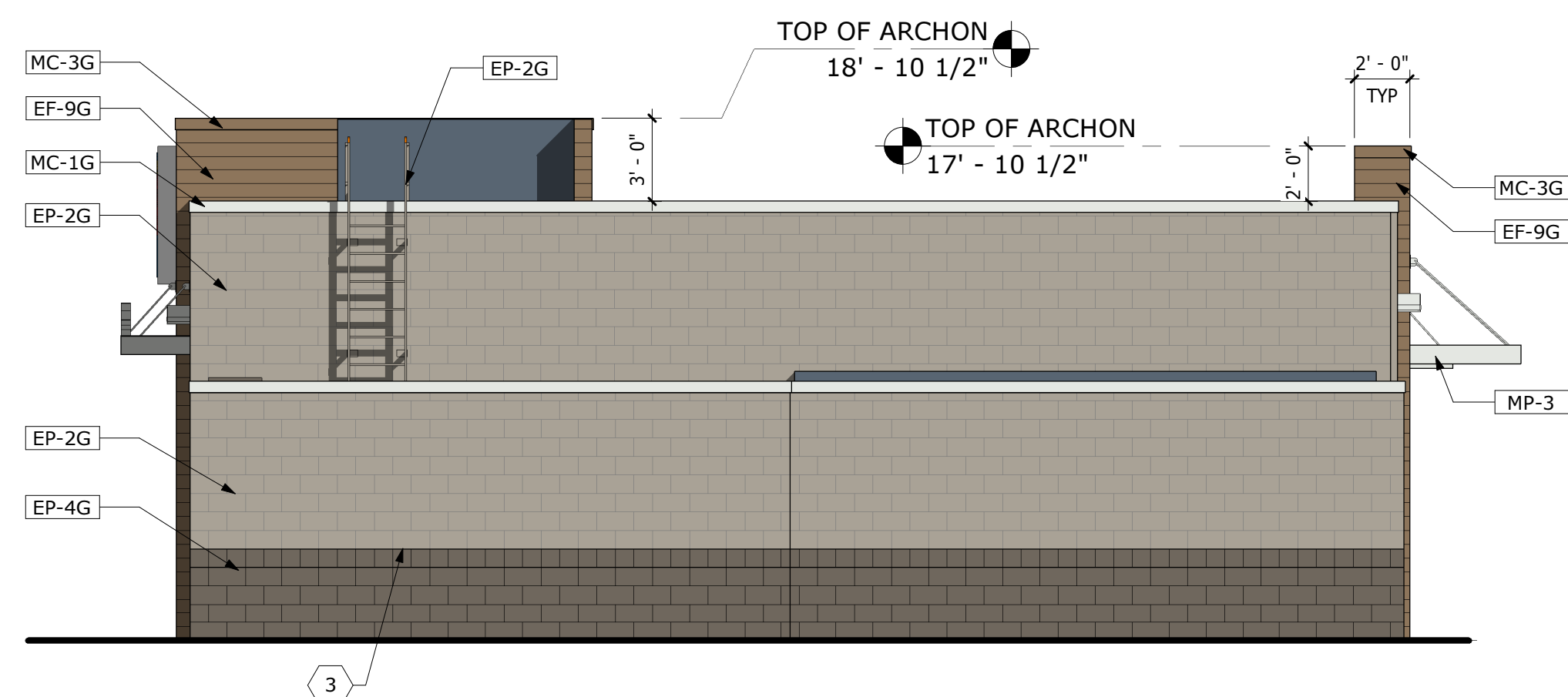
1 WEST ELEVATION
3/16" = 1'-0"



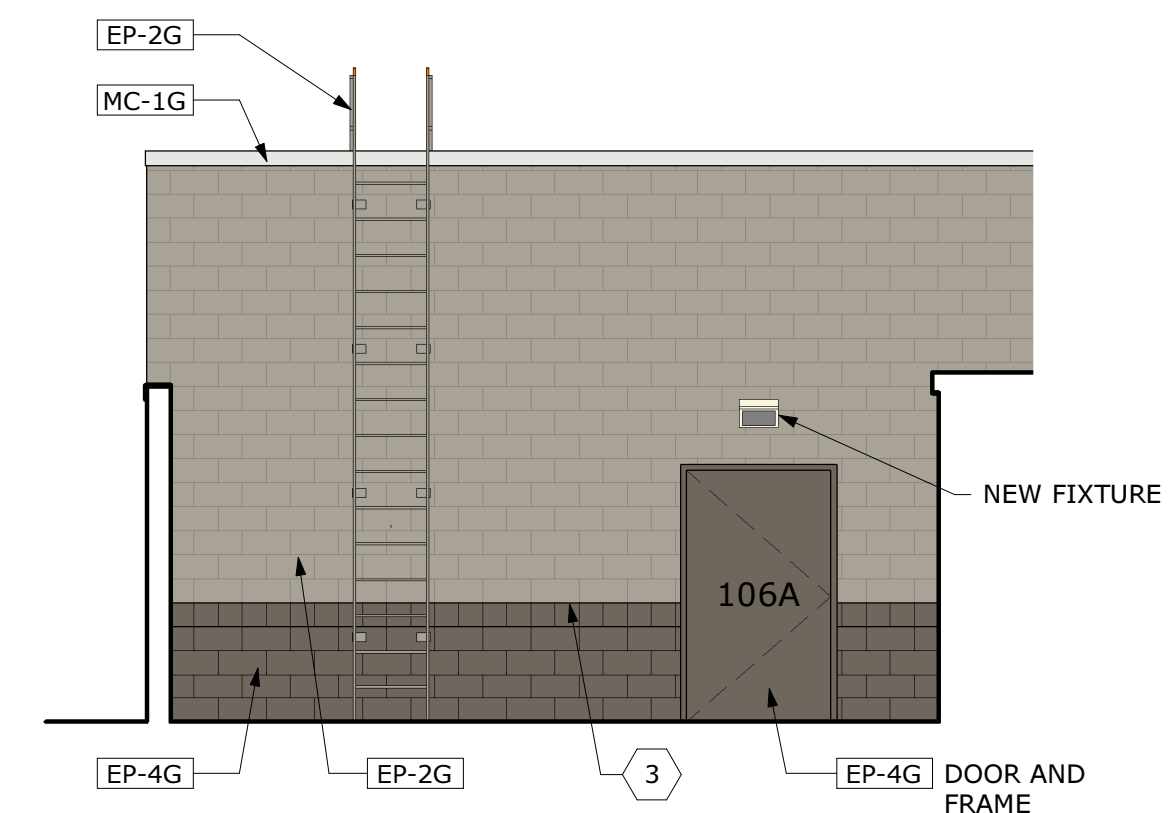
2 EAST ELEVATION
3/16" = 1'-0"



3 SOUTH ELEVATION
3/16" = 1'-0"



4 NORTH ELEVATION
3/16" = 1'-0"



5 NORTH ELEVATION
3/16" = 1'-0"

GENERAL ELEVATION NOTES:

1. REFER TO SHEET A80 FOR REFERENCED EXTERIOR FINISHES
2. CANOPY SUPPLIER TO VERIFY DIMENSIONS OF NEW CANOPIES WITH EXISTING CONDITIONS AND ENSURE SIZES FIT WITHIN THE PARAMETERS OF THE DESIGN INTENT SHOWN; SEE SHEET A71 FOR MORE INFORMATION
3. G.C. TO SUPPLY NEW ELECTRICAL FOR NEW UNDER-CANOPY LIGHTS PROVIDED BY CANOPY SUPPLIER
4. G.C. TO CONNECT NEW PARAPET LIGHT BAND ELECTRICAL TO EXISTING CIRCUITS
5. G.C. TO SUPPLY NEW POWER AT NEW SIGNAGE LOCATIONS. COORDINATE WITH SIGNAGE VENDOR
6. G.C. TO INSTALL ALL FIBER CEMENT PRODUCT IN STRICT ACCORDANCE WITH MANUFACTURER'S REQUIREMENTS INCLUDING BUT NOT LIMITED TO MOISTURE RESISTIVE BARRIER, FLASHING, ETC
7. EF-8 TO HAVE MATCHING TRIM AROUND OPENINGS AND EDGES
8. INSTALL SNOW GUARDS, IN STAGGERED PATTERN, AT ALL STANDING SEAM METAL ROOF PANELS
9. PAINT ALL EXTERIOR BLOCK, SEE ELEVATIONS FOR FINISH COLOR
10. ALL STOREFRONT TO REMAIN; TOUCH-UP PAINT AS NEEDED

ELEVATION KEY NOTES:

- 1 NEW 5' LOGO SIGN - SUPPLIED AND INSTALLED BY SIGNAGE VENDOR
- 2 NEW PARAPET LIGHT BAND (INSTALLED BY SIGNAGE VENDOR) MOUNTED ABOVE MC-1 (INSTALLED BY GC)
- 3 COLOR TRANSITION AT GROUT LINE ABOVE FIRST DETAIL COURSE



ARCHITECTS | DESIGNERS | ENGINEERS
6115 CAHILL AVE, INVER GROVE HEIGHTS, MN 55076
P. 651.451.4605 KOMAINC.COM

THE DESIGNS AND PLANS INDICATED ON THIS DRAWING ARE THE PROPERTY OF KRECH, O'BRIEN, MUELLER & ASSOCIATES, INC. ALL RIGHTS ARE RESERVED. NO DESIGNS OR PLANS SHALL BE USED OR REPRODUCED IN ANY FORM OR BY ANY MEANS WITHOUT THE WRITTEN PERMISSION OF KRECH, O'BRIEN, MUELLER & ASSOCIATES, INC.

DATE: _____ REG. NO.: _____

EXTERIOR ELEVATIONS

BURGER KING (STR #12918)
3519 MORMON COULEE RD
LACROSSE, WI

PROJECT: 17076
DRAWN BY: LAS
CHECKED BY: KDD
DATE: 03.29.2018
REVISIONS:

PRELIMINARY:
NOT FOR
CONSTRUCTION

A50

11/16/2017							GARDEN GRILL EXTERIOR MATERIALS & FINISH SCHEDULE					
MATERIAL		LOCATION	MANUFACTURER	PRODUCT		DESCRIPTION	DIMENSION	ADDITIONAL INFORMATION				
CODE	EXTERIOR BRICK	GENERAL	EVOLUTION BRICK	MOD/QS TUMBLED (FULL BRICK) (THIN BRICK)		OLDE HILLSBORO SIERRA TUMBLED		CONTACT: GABE POWERS (502) 558-4612 NOTE: USE WITH EGR-3G CONTACT: THERESA BEANE (800) 334-8689 TBEANE@PINEHALLBRICK.COM NOTE: USE WITH EGR-3G CONTACT: ED PEREZ (916) 917-7196 NOTE: USE WITH EGR-3G				
			PINE HALL BRICK	FACE BRICK		OLD IRVINGTON O/S						
			H.C.MUDDOX BRICK	THIN BRICK		BK WEST COAST BLEND						
EB-1AG (ALTERNATE FOR EB-1G)	EXTERIOR FINISH FIBER CEMENT BRICK PANELS	GENERAL	NICHIHA FIBER CEMENT	NICHIHA CANYON BRICK PANELS		"SHALE BROWN" - STAGGERED JOINTS - UNPAINTED IF NO OTHER BRICK IS PRESENT. (ON REMODELS, IF THERE IS ANY EXISTING BRICK ON THE BUILDING, THE EXISTING BRICK AND THE NICHIHA BRICK MUST BE PAINTED TO MATCH EP-4G)	18" X 6'	CONTACT: NICHIHA CUSTOMER SERVICE (770) 805-9466 BK@NICHIHA.COM INSTALL PER MANUFACTURER'S SPECIFICATIONS VERTICAL APPLICATIONS ONLY (NOT FOR USE ON SOFFITS)				
ECT-1G	EXTERIOR CERAMIC TILE	ACCENT AT BUILDING FRONT	GRANITI GIANDRE/ EUROWEST	SENSIBLE STONE ED5052		"RED NATURAL" STACKED BOND PATTERN	12" X 24"	CONTACT: JOY DETER AT EUROWEST (714) 309-9551 OR JOY KLEIN (813) 334-3302 jklein@transceramica.com NOTE: USE WITH EGR-4G				
ECT-18G	EXTERIOR CERAMIC TILE	INLINE RESTAURANTS ONLY	GRANITI GIANDRE/ EUROWEST	ROVERE ANTICO LEGNI HIGH TECH		PAR 15334 "ROVERE" STACKED BOND PATTERN	6" X 36"	CONTACT: JOY DETER AT EUROWEST (714) 309-9551 OR JOY KLEIN (813) 334-3302 jklein@transceramica.com NOTE: USE WITH EGR-9G				
EF-1G	EXTERIOR FINISH - STUCCO, STO, FIBER CEMENT SIDING PANELS	GENERAL	STO OR APPROVED EQUAL	STO POWERWALL STUCCO SYSTEM TEXTURE: FINE SAND OR STO THERM CI EIFS SYSTEMS		COLOR TO MATCH EP-2G PPG "TANNERS TAUPE"	18" X 6'	CONTACT: TIM SALERNO AT STO CORP (407) 466-5371				
			NICHIHA FIBER CEMENT	NICHIHA TUFFBLOCK		PREPAINTED TO MATCH EP-2G - PPG "TANNERS TAUPE" STACKED BOND PATTERN		CONTACT: NICHIHA CUSTOMER SERVICE (770) 805-9466 BK@NICHIHA.COM INSTALL PER MANUFACTURER'S SPECIFICATIONS VERTICAL APPLICATIONS ONLY (NOT FOR USE ON SOFFITS)				
EF-4G	EXTERIOR FINISH STUCCO	GENERAL	STO OR APPROVED EQUAL	STO POWERWALL STUCCO SYSTEM		COLOR TO MATCH EP-4G PPG "MONTEREY CLIFFS"		CONTACT: TIM SALERNO AT STO CORP (407) 466-5371				
EF-8G (ALTERNATE FOR EF-9G)	EXTERIOR FINISH STONE	EXTERIOR SIGN ARCHONS	BORAL STONE PRODUCTS	COUNTRY LEDGESTONE		"ASPEN"		CONTACT: (800)-255-1727 DIANE.CLARK@BORAL.COM CULTUREDSTONE@BORAL.COM				
EF-9G	EXTERIOR FINISH FIBER CEMENT	EXTERIOR SIGN ARCHONS	NICHIHA FIBER CEMENT	VINTAGE WOOD EF762		"CEDAR"	18"x10'	CONTACT: NICHIHA CUSTOMER SERVICE (770) 805-9466 BK@NICHIHA.COM INSTALL PER MANUFACTURER'S SPECIFICATIONS. VERTICAL SEAMS SHALL BE MINIMIZED. ALL SPANS OF 10' OR MORE SHALL HAVE VERTICAL SEAMS ALIGNED IN THE CENTER OF THE ARCHON. SEAMS TO BE CAULKED WITH EC-1G OR USE "H-MOLD" FACTORY TRIMS. ALL TRIMS SHALL BE FACTORY PAINTED TO MATCH PANELS. VERTICAL APPLICATIONS ONLY (NOT FOR USE ON SOFFITS)				
TR-1G	ALUMINUM TRIMS											
EC-1G	EXTERIOR CAULK		ADSEAL PRODUCTS	ADSEAL 458-63		"VINTAGE WOOD CEDAR"		CONTACT: MATT KLINGE AT ADFAST (314) 753-0964 MATT.KLINGE@ADFASTCORP.COM NOTE: USE WITH EF-9G				
EP-2G	EXTERIOR PAINT	EXTERIOR GENERAL	PPG SHERWIN WILLIAMS COLORS AVAILABLE UPON REQUEST; SEE ADDITIONAL INFORMATION FOR CONTACT	PRIMER: 17-921 PAINT: 6-2045X1	"TANNERS TAUPE" Custom Formula			CONTACT: RICK GARLIN, PPG CORPORATE NATIONAL ACCOUNTS MANAGER phone: (317) 318-5800 email: garlin@ppg.com				
EP-4G	EXTERIOR PAINT	EXTERIOR WAINSCOT		PRIMER: 17-921 PAINT: 6-2045X1	"MONTERREY CLIFFS" 10YY 14/080			NOTE: FOR REMODELS ONLY, NOT FOR USE ON ROOFS SEE EP-6AG & EP-6BG				
EP-6G	EXTERIOR PAINT	LOGO SIGN CABINETS & BURGER KING CHANNEL LETTER CABINETS		PRIMER: 6-212 PAINT: 6-230	"BURGER KING SILVER" Custom Formula							
EP-6AG	EXTERIOR PAINT	EXISTING MANSARD ROOFS, SHINGLES & BARREL TILE		PRIMER: 17-921 PAINT: 90-1110	"GRIMMY'S GREY" 00NN 20/000			NOTE: BY EXCEPTION FOR REMODELS ONLY				
EP-6BG	EXTERIOR PAINT	EXISTING STANDING SEAM METAL ROOF		PRIMER: 90-712 PAINT: 90-1110	"MARCH WIND" Custom Formula			NOTE: BY EXCEPTION FOR REMODELS ONLY				
EP-8BG	EXTERIOR PAINT	METAL COPING AT ARCHON TOWERS		PRIMER: 17-921 PAINT: 6-2045X1	"CEDAR" Custom Formula							
EXT-G	EXTERIOR PAINT	POLES & SIGNS		PRIMER: 90-712 PAINT: 90-353	"BLACK"			CONTACT: GLENN REMLER, ARCHITECTURAL ACCOUNT EXECUTIVE phone: (954) 547-1217 email: Glenn.J.Remler@Sherwin.com				
EGR-3G	GROUT	BRICK	MAPEI			#5 "CHAMOIS"		NOTE: USE WITH EB-1G				
EGR-4G	GROUT	CERAMIC TILE	CUSTOM BUILDING PRODUCTS	POLYBLEND SANDED		#335 "WINTER GRAY"		NOTE: USE WITH ECT-1G *** FOR SETTING MATERIALS USE COMPLETE CONTACT RAPID SET *** SEAL GROUT WITH AQUAMIX SEALERS CHOICE GOLD				
EGR-9G	GROUT	INLINE RESTAURANTS ONLY CERAMIC TILE	LATICRETE	POLYBLEND SANDED		#66 "CHESTNUT BROWN"		NOTE: USE WITH ECT-18G *** CONTRACTOR TO ALLOW 1/16" MAX FOR GROUT JOINT *** FOR SETTING MATERIALS USED COMPLETE CONTACT RAPID SET *** SEAL GROUT WITH AQUAMIX SEALERS CHOICE GOLD CONTACT: KIRBY DAVIS AT LATICRETE (203) 671-7210				
MC-1G	METAL COPING	TOP OF LIGHT BAND WALL CAP	W.P. HICKMAN SYSTEMS, INC.	PERMA SNAP PLUS		A-30 "SILVERSMITH"		CONTACT: W.P. HICKMAN COMPANY (828)676-1700 - WWW.WPH.COM				
MC-2G	METAL COPING	BELOW LIGHT BAND		PERMA SNAP PLUS		FACTORY FINISH TO MATCH EP-2G PPG "TANNERS TAUPE"						
MC-3G	METAL COPING	TOP OF ARCHON		PERMA SNAP PLUS		TO BE PAINTED TO MATCH EP-8G PPG "CEDAR"						
MP-1G		PARAPET LIGHT BAND	LEKKTRON *SEE APPROVED SIGN SUPPLIERS	LED LIGHT BAND			*SEE PLANS	PRODUCT INFORMATION: KEVIN RUBOTTOM AT LEKTRON (800) 634-4059 OR (918) 622-4978 EMAIL: KRUBOTTOM@LEKTRONINC.COM				
MP-3G	METAL CANOPY	ABOVE DOORS AND WINDOWS	*SEE APPROVED CANOPY SUPPLIERS	CUSTOM METAL CANOPY		COLOR: CLEAR ANODIZED	*SEE PLANS					
MP-4G	METAL AWNING / SSM ROOFING	ABOVE WINDOWS / MANSARD ROOFING	FIRESTONE METAL PRODUCTS	STANDING SEAM METAL ROOF UC-4 PROFILE		SILVER METALLIC SR	*SEE PLANS	CONTACT: YUSUKE KOREEDA (615) 945-9991 EMAIL: KOREEDAYUSUKE@FIRESTONEBP.COM				
			BERRIDGE ROOFING METAL PRODUCTS	STANDING SEAM METAL ROOF CEE-LOCK		PREMIUM METALLIC - ZINC COTE	*SEE PLANS	CONTACT: (210) 650-7047				



THE DESIGNS AND PLANS INDICATED ON THIS DRAWING ARE THE PROPERTY OF KRECII, O'BRIEN, MUELLER & ASSOCIATES, INC. ALL RIGHTS ARE RESERVED. NO DESIGNS OR PLANS SHALL BE USED OR REPRODUCED IN ANY FORM OR BY ANY MEANS WITHOUT THE WRITTEN PERMISSION OF KRECII, O'BRIEN, MUELLER & ASSOCIATES, INC.

DATE: _____ REG. NO.: _____

EXTERIOR FINISH SCHEDULE

BURGER KING (STR #12918)
3519 MORMON COULEE RD
LACROSSE, WI

PROJECT:	17076
DRAWN BY:	LAS
CHECKED BY:	STI
DATE:	03.29.2018
REVISIONS:	

PRELIMINARY:
NOT FOR
CONSTRUCTION

A80



① Drive-Thru and Archon



② HOME OF THE WHOPPER

NOTE: THESE DRAWINGS ARE FOR VISUAL REFERENCE
AND TO HELP COMMUNICATE THE DESIGN INTENTION
ONLY; REFER TO CONSTRUCTION DOCUMENT
ELEVATIONS FOR ALL NOTES. DO NOT USE THESE
DRAWINGS FOR ACTUAL CONSTRUCTION; CONTACT
ARCHITECT IF YOU HAVE QUESTIONS



ARCHITECTS | DESIGNERS | ENGINEERS
6115 CAHILL AVE, INVER GROVE HEIGHTS, MN 55076
P. 651.451.4605 KOMAINC.COM

THE DESIGNS AND PLANS INDICATED ON THIS DRAWING ARE
THE PROPERTY OF KRECH, O'BRIEN, MUELLER & ASSOCIATES,
INC. ALL RIGHTS ARE RESERVED. NO DESIGNS OR PLANS
SHALL BE USED OR REPRODUCED IN ANY FORM OR BY ANY
MEANS WITHOUT THE WRITTEN PERMISSION OF KRECH,
O'BRIEN, MUELLER & ASSOCIATES, INC.

DATE: _____ REG. NO.: _____

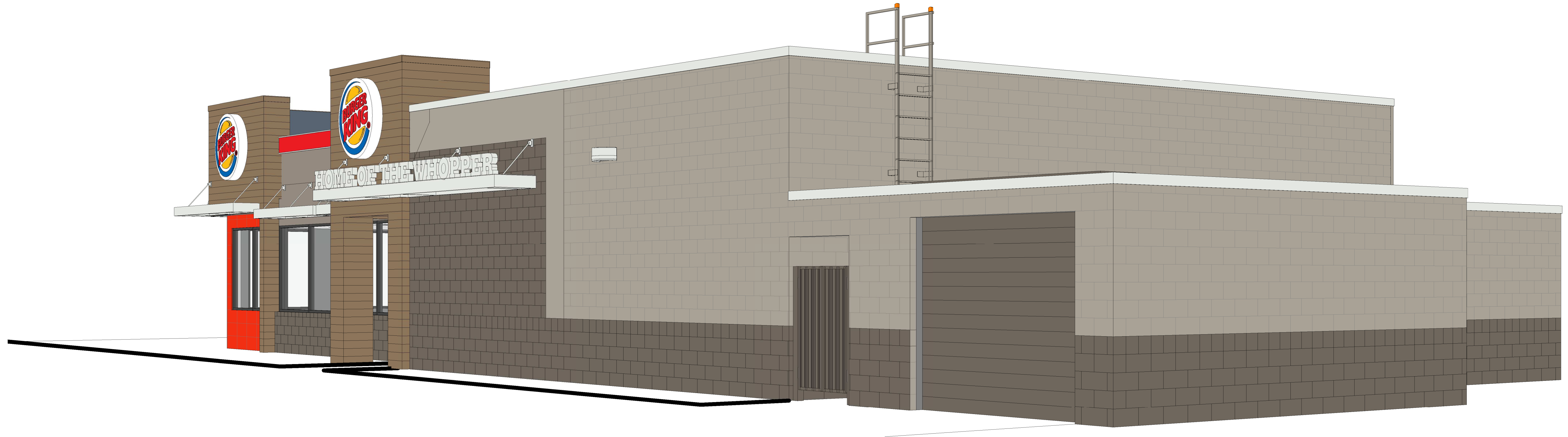
REFERENCE 3D VIEWS

BURGER KING (STR #12918)
3519 MORMON COULEE RD
LACROSSE, WI

PROJECT: 17076
DRAWN BY: KDD
CHECKED BY: STI
DATE: 03.29.2018
REVISIONS:

**PRELIMINARY:
NOT FOR
CONSTRUCTION**

A90



① 3D View Northeast Corner



② 3D View Southeast Corner

NOTE: THESE DRAWINGS ARE FOR VISUAL REFERENCE AND TO HELP COMMUNICATE THE DESIGN INTENTION ONLY; REFER TO CONSTRUCTION DOCUMENT ELEVATIONS FOR ALL NOTES. DO NOT USE THESE DRAWINGS FOR ACTUAL CONSTRUCTION; CONTACT ARCHITECT IF YOU HAVE QUESTIONS



KOMA
ARCHITECTS | DESIGNERS | ENGINEERS
6115 CAHILL AVE, INVER GROVE HEIGHTS, MN 55076
P. 651.451.4605 KOMAINC.COM

THE DESIGNS AND PLANS INDICATED ON THIS DRAWING ARE THE PROPERTY OF KRECH, O'BRIEN, MUELLER & ASSOCIATES, INC. ALL RIGHTS ARE RESERVED. NO DESIGNS OR PLANS SHALL BE USED OR REPRODUCED IN ANY FORM OR BY ANY MEANS WITHOUT THE WRITTEN PERMISSION OF KRECH, O'BRIEN, MUELLER & ASSOCIATES, INC.

DATE: _____ REG. NO.: _____

REFERENCE 3D VIEWS

BURGER KING (STR #12918)
3519 MORMON COULEE RD
LACROSSE, WI

PROJECT: 17076
DRAWN BY: LAS
CHECKED BY: STI
DATE: 03.29.2018
REVISIONS:

**PRELIMINARY:
NOT FOR
CONSTRUCTION**

A91