

FIRE / SMOKE BARRIER DESIGNATIONS
REFER TO ARCHITECTURAL LIFE SAFETY PLANS FOR WALL, FLOOR AND FLOOR CEILING RATINGS.

CONTRACTOR ABBREVIATION KEY	
ABBR:	DESCRIPTION:
C.M.	CONSTRUCTION MANAGER
E.C.	ELECTRICAL CONTRACTOR
G.C.	GENERAL CONTRACTOR
M.C.	MECHANICAL CONTRACTOR
N.C.C.	NURSE CALL CONTRACTOR
S.C.	SECURITY CONTRACTOR
T.C.	TECHNOLOGY CONTRACTOR

CONTACT PERSONS:	
DESCRIPTION:	PERSON:
PROJECT MANAGER	PAUL VANDUYNE JR
MECHANICAL ENGINEER	PAUL VANDUYNE JR
ELECTRICAL ENGINEER	KELSEY RICHMOND
TECHNOLOGY ENGINEER	DONALD PAUL

FIRE PROTECTION SYMBOL LIST	
NOT ALL SYMBOLS MAY APPLY.	
SYMBOL:	DESCRIPTION:
DFP	DRAIN
FP	FIRE PROTECTION
W	SERVICE WATER - POTABLE
→	PIPE CAP
→	PIPE DOWN
→	PIPE UP OR UP/DOWN
→	NEW CONNECTION
→	DIRECTION OF FLOW IN PIPE
→	SHUTOFF VALVE NORMALLY OPEN
→	AUTOMATIC DRAIN VALVE
→	AREA BOUNDARY
NO HATCH	LIGHT HAZARD
	ORDINARY GROUP 1
	ORDINARY GROUP 2
	DEMOLITION
	EXTRA GROUP 1
	EXTRA GROUP 2
►	SPRINKLER - WALL MOUNTED
●	SPRINKLER
○	SPRINKLER - CONCEALED
⊙	SPRINKLER
⊙	SPRINKLER
⊙	SPRINKLER
⊙	SPRINKLER
⊙	SPRINKLER

FIRE PROTECTION ABBREVIATION KEY	
ABBR:	DESCRIPTION:
NC	NEW CONNECTION
N.C.	NORMALLY CLOSED
NIC	NOT IN CONTRACT
N.O.	NORMALLY OPEN
TYP	TYPICAL
UNO	UNLESS NOTED OTHERWISE

MECHANICAL RENOVATION NOTES:

- THESE NOTES APPLY TO ALL MECHANICAL SHEETS AND TRADES, INCLUDING BUT NOT LIMITED TO, FIRE PROTECTION, PLUMBING, MEDICAL GAS, VENTILATION, PIPING AND TEMPERATURE CONTROL.
- EXISTING CONDITIONS ARE SHOWN BASED ON INFORMATION OBTAINED FROM FIELD SURVEYS, EXISTING BUILDING DOCUMENTS, AND STAFF. VERIFY EXISTING CONDITIONS AND REPORT ANY CONFLICTS BEFORE PROCEEDING.
 - NOT ALL EXISTING DUCTWORK AND PIPING IS SHOWN. VERIFY EXISTING CONDITIONS BEFORE STARTING WORK. NOTIFY ENGINEER OF ANY CONFLICTS WITH NEW WORK.
 - FIELD VERIFY THE AVAILABLE CLEARANCES FOR DUCTWORK AND PIPING BEFORE FABRICATION. RISES AND DROPS MAY BE NECESSARY BECAUSE OF EXISTING FIELD CONDITIONS.
 - EACH CONTRACTOR SHALL FIELD VERIFY ACCESSIBILITY TO THE AREA OF HIS/HER WORK AND SHALL NOTIFY THE GENERAL CONTRACTOR PRIOR TO BIDDING IF OTHER UTILITIES ARE REQUIRED TO BE REMOVED OR RELOCATED TO ALLOW ACCESS TO HIS/HER AREA OF WORK.
 - THE GENERAL CONTRACTOR IS RESPONSIBLE FOR CUTTING, REMOVAL AND PATCHING OF ROOFS, WALLS, AND FLOORS ASSOCIATED WITH WORK BY ALL CONTRACTORS. CONTRACTORS SHALL NOTIFY THE GC OF AFFECTED AREAS PRIOR TO BIDDING.
 - THE GENERAL CONTRACTOR IS RESPONSIBLE FOR REMOVAL AND REPLACEMENT OF CEILINGS, CEILING TILES, AND CEILING GRIDS ASSOCIATED WITH AREAS OF WORK BY ALL CONTRACTORS. NOTIFY THE GENERAL CONTRACTOR OF AFFECTED AREAS PRIOR TO BIDDING.
 - WHERE EXISTING MECHANICAL SYSTEMS ARE LOCATED IN AREAS THAT CONFLICT WITH NEW EQUIPMENT, PIPING, OR DUCTWORK TO BE INSTALLED, EACH CONTRACTOR SHALL EITHER ARRANGE NEW EQUIPMENT, PIPING, OR DUCTWORK IN SUCH A FASHION THAT IT DOES NOT CONFLICT WITH EXISTING SYSTEMS, OR REWORK EXISTING MECHANICAL SYSTEMS TO ALLOW FOR INSTALLATION OF NEW EQUIPMENT, PIPING, OR DUCTWORK.
 - PROVIDE TEMPORARY CONNECTIONS TO MAINTAIN EXISTING SYSTEMS IN SERVICE DURING CONSTRUCTION. MAINTAIN ACCESS TO EXISTING MECHANICAL INSTALLATIONS THAT REMAIN ACTIVE.
 - OBTAIN PERMISSION FROM OWNER BEFORE SHUTTING DOWN ANY SYSTEM FOR ANY REASON. MAINTAIN SERVICE TO ALL COMPONENTS THAT ARE TO REMAIN UNTIL NEW SYSTEMS ARE INSTALLED.
 - MAINTAIN EXISTING SYSTEM IN SERVICE UNTIL NEW SYSTEM IS COMPLETE AND READY FOR TIE IN AND SWITCHOVER. DRAIN SYSTEM ONLY TO MAKE SWITCHOVERS AND CONNECTIONS. OBTAIN PERMISSION FROM OWNER BEFORE PARTIALLY OR COMPLETELY DRAINING SYSTEM. MAKE CHANGEOVER TO NEW SYSTEMS WITH MINIMUM OUTAGE.
 - DISCONNECT AND REMOVE MECHANICAL DEVICES AND EQUIPMENT SERVING EQUIPMENT THAT HAS BEEN REMOVED.

MECHANICAL PHASING NOTES:

- THESE NOTES APPLY TO ALL MECHANICAL SHEETS AND TRADES, INCLUDING BUT NOT LIMITED TO, FIRE PROTECTION, PLUMBING, MEDICAL GAS, VENTILATION, PIPING AND TEMPERATURE CONTROL.
- REFER TO ARCHITECTURAL DRAWINGS FOR GENERAL DESCRIPTION OF PHASES. REFER TO ARCHITECT'S INSTRUCTIONS FOR MORE DETAILS, PHASING SCHEDULES AND FOR CONCURRENT WORK. MECHANICAL, ELECTRICAL, AND TECHNOLOGY DRAWINGS DEPICT THE INTENT OF THE FINAL DESIGN. THE MECHANICAL, ELECTRICAL, AND TECHNOLOGY DRAWINGS DO NOT DEPICT THE MEANS AND METHODS TO MEET THE REQUIREMENTS OF THE PHASING CRITERIA.
 - REVIEW PROJECT PHASING PLANS TO COORDINATE DEMOLITION WORK, OUTAGES, ETC. WITH AFFECTED ADJACENT AREAS.
 - PROVIDE TEMPORARY DUCTWORK, PIPING, SHUTOFF VALVES, ZONE VALVES, ZONE ALARMS, ETC. AS NEEDED TO MAINTAIN SERVICE TO ALL AREAS DURING ALL PHASES OF PROJECT.
 - INSTALL TEMPORARY DUCTWORK, PIPING, SHUTOFF VALVES, ETC. AS NECESSARY TO KEEP ALL OCCUPIED SPACES OPERATIONAL THROUGHOUT ALL PHASES OF THE PROJECT.
 - PHASE DEMOLITION WORK TO MINIMIZE DOWNTIME.

FIRE PROTECTION GENERAL NOTES:

- THE SYMBOLS ARE FOR THE CONVENIENCE OF THE CONTRACTOR. CONTRACTOR SHALL VERIFY QUANTITIES AND FURNISH ALL MATERIALS REQUIRED FOR FULLY OPERATIONAL SYSTEMS, WHETHER SPECIFIED OR NOT.
- CATALOG NUMBERS SHALL NOT BE CONSIDERED COMPLETE, BUT ARE GIVEN AS AN AID TO THE CONTRACTOR AND TO INDICATE THE QUALITY REQUIRED. CONTRACTOR IS RESPONSIBLE FOR A COMPLETE DESCRIPTION OF MATERIAL ON THESE DRAWINGS AND IN THE SPECIFICATIONS BEFORE ORDERING. THE DESCRIPTION OF THE MATERIAL TAKES PRECEDENCE OVER THE CATALOG NUMBER. THE FIRST MANUFACTURER IS THE BASIS OF DESIGN.
- CENTER SPRINKLERS IN CEILING TILES IN BOTH DIRECTIONS IN ALL AREAS. IN AREAS WITH 2'x4' CEILING TILES CENTERING USING A 2'x2' CEILING PATTERN IS ACCEPTABLE.
- NEW SPRINKLERS SHALL BE QUICK RESPONSE TYPE, UNLESS OTHERWISE NOTED. CONTRACTOR SHALL NOT MIX STANDARD RESPONSE SPRINKLERS WITH QUICK RESPONSE SPRINKLERS IN UNPARTITIONED SPACES.
- PROVIDE COVERAGE ABOVE AND BELOW ALL DUCTWORK GREATER THAN 48" WIDE.
- PROVIDE COVERAGE ABOVE AND BELOW FLOATING CEILINGS, REFER TO ARCHITECTURAL PLANS.

MECHANICAL GENERAL NOTES:

- THESE NOTES APPLY TO ALL MECHANICAL SHEETS AND TRADES, INCLUDING BUT NOT LIMITED TO, FIRE PROTECTION, PLUMBING, MEDICAL GAS, VENTILATION, PIPING AND TEMPERATURE CONTROL.
- DRAWINGS SHOWING LOCATIONS OF EQUIPMENT, DUCTWORK, PIPING, ETC. ARE DIAGRAMMATIC AND MAY NOT ALWAYS REFLECT EXACT INSTALLATION CONDITIONS. DRAWINGS SHOW THE GENERAL ARRANGEMENT OF DUCTWORK, PIPING, EQUIPMENT, ETC., AND MAY NOT INCLUDE ALL OFFSETS AND FITTINGS REQUIRED FOR COMPLETE INSTALLATION. THE DRAWINGS SHALL BE FOLLOWED AS CLOSELY AS ACTUAL BUILDING CONSTRUCTION AND THE WORK OF OTHERS WILL PERMIT.
 - DO NOT SCALE DRAWINGS. VERIFY ALL DIMENSIONS AND CLEARANCES FROM ARCHITECTURAL, STRUCTURAL, SUBMITTALS, AND OTHER APPROPRIATE DRAWINGS OR PHYSICALLY AT SITE. REVIEW ALL DRAWINGS, INCLUDING THOSE OF OTHER TRADES.
 - COORDINATE ALL WORK WITH ALL OTHER TRADES PRIOR TO INSTALLATION TO PROVIDE CLEARANCES REQUIRED FOR OPERATION, MAINTENANCE, CODE COMPLIANCE, AND TO VERIFY NON-INTERFERENCE WITH OTHER WORK. DO NOT FABRICATE PRIOR TO VERIFICATION OF NECESSARY CLEARANCES FOR ALL TRADES. BRING ANY INTERFERENCES OR CONFLICTS TO THE ATTENTION OF THE ARCHITECT/ENGINEER BEFORE PROCEEDING WITH FABRICATION OR EQUIPMENT ORDERS.
 - REVIEW SPACE REQUIREMENTS OF EQUIPMENT SPECIFIED OR SUBSTITUTED AND MAKE REASONABLE ACCOMMODATIONS IN LAYOUT AND POSITIONING TO PROVIDE PROPER ACCESS.
 - ANY CHANGES REQUIRED TO ELIMINATE CONFLICTS OR THAT RESULT FROM A FAILURE TO COORDINATE SHALL BE MADE BY THE CONTRACTOR WITHOUT ADDITIONAL COST OR EXPENSE TO OTHERS.
 - EACH CONTRACTOR IS RESPONSIBLE FOR ALL COSTS ASSOCIATED WITH ELECTRICAL CHANGES REQUIRED FOR EQUIPMENT PROPOSED THAT DIFFERS FROM THE BASIS OF DESIGN.
 - REFER TO ARCHITECTURAL REFLECTED CEILING PLAN, ELECTRICAL, TECHNOLOGY AUDIOVISUAL, AND OTHER MECHANICAL PLANS FOR EXACT LOCATIONS OF ALL CEILING MOUNTED DEVICES, OTHER THAN SPRINKLERS.
 - EACH CONTRACTOR IS RESPONSIBLE FOR DAMAGE CAUSED BY THEIR ACTIONS TO WALLS, FLOORS, CEILINGS, AND ROOFS. THE CONTRACTOR WHOSE WORK CAUSES DAMAGE IS RESPONSIBLE FOR PATCHING TO MATCH ORIGINAL CONSTRUCTION, FIRE RATING, AND FINISH.
 - IN AREAS WITH DRYWALL CEILINGS COORDINATE LOCATIONS OF ACCESS PANELS WITH THE GC FOR ACCESS TO VALVES, DUCTWORK ACCESSORIES, DAMPERS, ETC. COORDINATE PANEL TYPE AND COLOR WITH ARCHITECT. NOTIFY THE GC OF THE REQUIRED ACCESS PANELS PRIOR TO BIDDING.
 - SEAL ALL FLOOR, WALL, AND ROOF PENETRATIONS AIRTIGHT WHERE CONDUITS, PIPING, AND DUCTS PENETRATE. PENETRATIONS THROUGH EXTERIOR WALLS AND ROOF SHALL BE SEALED AIRTIGHT WITH WATERPROOFING MATERIALS RECOMMENDED BY MANUFACTURER FOR OUTDOOR USE.
 - CAULK ALL PIPE AND DUCT PENETRATIONS OF FULL HEIGHT NON-FIRE RATED WALL, PARTITION, FLOOR, AND ROOF ASSEMBLIES. THIS IS ESSENTIAL TO PREVENT NOISE TRANSMISSION FROM ONE ROOM TO ANOTHER AND TO PROVIDE THE DESIRED NC LEVELS WITHIN ROOMS.
 - WHERE PIPES AND DUCTS ARE SHOWN TO PENETRATE FLOORS, PROVIDE SLEEVED OPENINGS WITH THE TOP EDGE RAISED ABOVE FLOOR SURFACE IN ACCORDANCE WITH ALL RELEVANT SPEC SECTIONS. SEAL SLEEVE PERIMETER TO BE WATERTIGHT.
 - EQUIPMENT SIZES AND SERVICE CLEARANCE REQUIREMENTS VARY AMONG DIFFERENT MANUFACTURERS. CONSULT APPROVED SHOP DRAWINGS FOR EQUIPMENT SIZES AND REQUIRED SERVICE CLEARANCES. COORDINATE WITH LAYOUT OF EQUIPMENT PADS, PIPING, DUCTWORK, ETC.
 - DO NOT BLOCK TUBE PULL OR EQUIPMENT SERVICE CLEARANCES.
 - MAINTAIN MINIMUM 3'-0" CLEARANCE IN FRONT OF ALL ELECTRICAL PANELS, MOTOR STARTERS, SWITCHES, AND DISCONNECTS.
 - DO NOT SUPPORT EQUIPMENT, PIPING, OR DUCTWORK FROM METAL DECKING OR OTHER NON-STRUCTURAL BUILDING ELEMENTS. ANCHORS EMBEDDED IN CONCRETE SHALL BE CRACKED CONCRETE APPROVED IN ACCORDANCE WITH SPECIFICATIONS.

FIRE PROTECTION SHEET INDEX

F000	FIRE PROTECTION COVER SHEET
FD100	LOWER LEVEL DEMOLITION PLAN - FIRE PROTECTION
F100	LOWER LEVEL FLOOR PLAN - FIRE PROTECTION

FIRE SPRINKLER USAGE SCHEDULE

- NOTES:
- SEE FLOOR PLANS FOR ZONING REQUIREMENTS.
 - SPRINKLER SHALL HAVE COLOR CODED BULB THERMAL ELEMENT.
 - ALL SPRINKLERS SHALL BE UL LISTED.
 - CONTRACTOR TO VERIFY SPRINKLER REQUIREMENTS BASED ON ACTUAL INSTALLATION, USAGE, ARCHITECTURAL CEILING PLAN AND NFPA 13 REQUIREMENTS.
 - TAG NAME IS PRIMARILY FOR IDENTIFYING SPRINKLERS IN SUBMITTALS. IT MAY OR MAY NOT BE FOUND ELSEWHERE ON THE DRAWINGS. CONTRACTOR TO SUBMIT ALL SPRINKLER TYPES TO BE USED.
 - AREAS ARE GENERAL IN NATURE. CONTRACTOR TO MATCH UNSCHEDULED AREAS TO SIMILAR SPACES.
 - VERIFY COLOR SELECTION WITH ARCHITECT.
 - SPRINKLERS TO USE IN DUST-FREE ENVIRONMENTS.

AREA TYPE (NOTE 1 & 6)	AREA HAZARD	SPRINKLER				TEMPERATURE RATING	MANUFACTURER & MODEL	NOTES
		TAG NAME (NOTE 4 & 5)	SPRINKLER TYPE	RESPONSE CATEGORY	FINISH			
LOBBY AND WAITING AREAS	SEE PLANS	SPR-1	CONCEALED	QUICK	WHITE	PER NFPA	VIKING VK, RELIABLE G4A, TYCO RF11, VICTAULIC V3802	NOTES 3 & 7
ROOMS WITH CEILINGS UNLESS NOTED OTHERWISE	SEE PLANS	SPR-2	SEMI RECESSED PENDENT	QUICK	WHITE	PER NFPA	VIKING VK, RELIABLE XL, TYCO, VICTAULIC	NOTES 2,3 & 7
AREAS WITHOUT CEILING	SEE PLANS	SPR-3	UPRIGHT	QUICK	BRASS	PER NFPA	VIKING VK, RELIABLE F-1FR, TYCO TY-FRB, VICTAULIC V2704	NOTES 2, 3
PHARMACY COMPOUNDING AREAS AND ANTE ROOM	SEE PLANS	SPR-4	CONCEALED WITH GASKET	QUICK	WHITE	PER NFPA	VIKING G4FR, TYCO RF11	NOTES 3, 8

CONSTRUCTION DOCUMENTS

Drawing Date
07/10/2018

MAYO CLINIC HEALTH SYSTEM CENTER FOR ADVANCED MEDICINE & SURGERY BUILDING ADDITION AND ALTERATIONS

700 West Avenue South, La Crosse, WI 54601

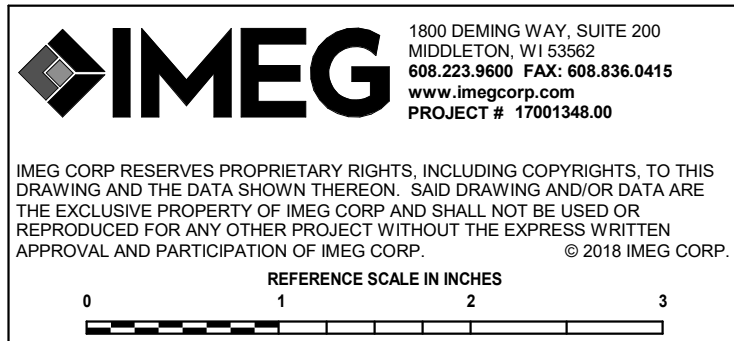
Project No. MCHS
217050

Sheet Title

FIRE PROTECTION COVER SHEET

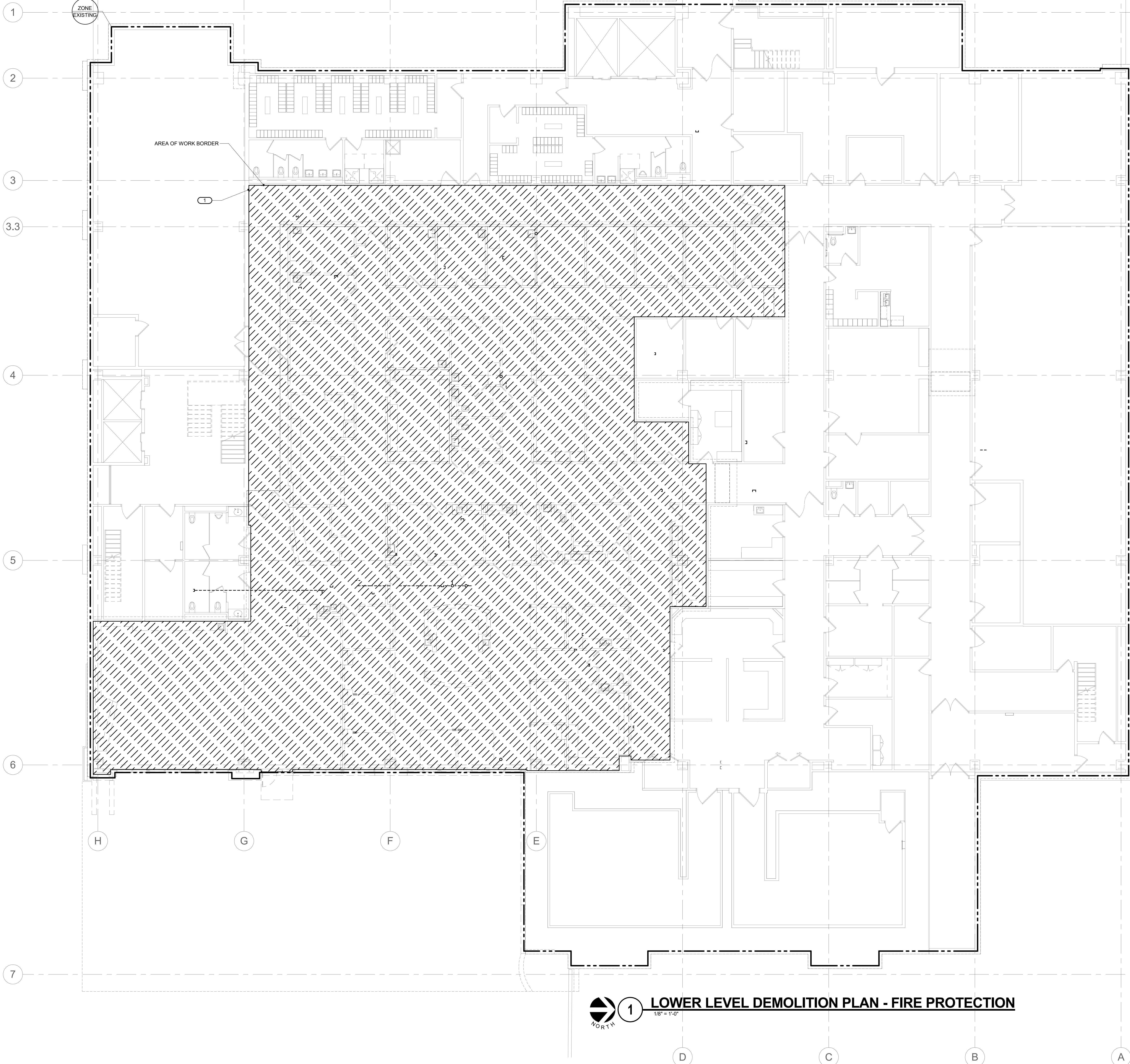
Copyright © 2018 Kahler Slater, Inc. All rights reserved.
111 West Wisconsin Avenue, Milwaukee, Wisconsin
53203
Telephone 414.272.2000 Fax 414.272.2001
44 East Millin Street, Suite 700, Madison, Wisconsin
53703
Telephone 608.283.6300 Fax 608.283.6317

Sheet No.
F000



KEYNOTES: **1**

1. REMOVE EXISTING SPRINKLERS WITHIN BORDER AS NEEDED TO ACCOMMODATE NEW FLOOR PLAN. FIELD VERIFY EXISTING SPRINKLER QUANTITIES AND LOCATIONS. RELOCATE SPRINKLER PIPING WITHIN BORDER AS NEEDED TO COORDINATE WITH NEW ROOM LAYOUTS.



1 LOWER LEVEL DEMOLITION PLAN - FIRE PROTECTION

1/8" = 1'-0"

IMEG

1800 DEMING WAY, SUITE 200
MILWAUKEE, WI 53262
608.223.8600 FAX: 608.236.0415
www.imegcorp.com
PROJECT # 1700348.00

IMEG CORP. RESERVES PROPRIETARY RIGHTS, INCLUDING COPYRIGHTS, TO THIS DRAWING AND THE DATA SHOWN THEREON. NO DRAWING AND/OR DATA ARE THE EXCLUSIVE PROPERTY OF IMEG CORP. AND SHALL NOT BE USED OR REPRODUCED FOR ANY OTHER PROJECT WITHOUT THE EXPRESS WRITTEN APPROVAL AND PARTICIPATION OF IMEG CORP.
© 2018 IMEG CORP.

REFERENCE SCALE IN INCHES

0 1 2 3

Revisions	
Date	Description

CONSTRUCTION DOCUMENTS

Drawing Date
07/10/2018

MAYO CLINIC HEALTH
SYSTEM CENTER FOR
ADVANCED MEDICINE
& SURGERY BUILDING
ADDITION AND
ALTERATIONS

700 West Avenue South, La Crosse, WI 54601

Project No. MCHS
217050

Sheet Title
**LOWER LEVEL
DEMOLITION PLAN -
FIRE PROTECTION**

Copyright © 2018 Kahler Slater, Inc. All rights reserved.
111 West Wisconsin Avenue, Milwaukee, Wisconsin
53203
Telephone 414.272.2000 Fax 414.272.2001
44 East Millin Street, Suite 700, Madison, Wisconsin
53703
Telephone 608.283.6300 Fax 608.283.6317

Sheet No.
FD100

KEYNOTES: C T

1. PROVIDE NEW SPRINKLERS AND FP PIPING WITHIN BORDER OF ZONE BOUNDARY AS NEEDED TO ACCOMMODATE NEW FLOOR PLAN. REFER TO SPRINKLER USAGE SCHEDULE FOR TYPES OF SPRINKLERS TO INSTALL IN SPACE. ALL NEW WORK SHALL COMPLY WITH NFPA 13 REQUIREMENTS.



Revisions	
Date	Description

CONSTRUCTION DOCUMENTS

Drawing Date
07/10/2018

MAYO CLINIC HEALTH
SYSTEM CENTER FOR
ADVANCED MEDICINE
& SURGERY BUILDING
ADDITION AND
ALTERATIONS

700 West Avenue South, La Crosse, WI 54601

Project No. MCHS
217050

Sheet Title
LOWER LEVEL FLOOR
PLAN - FIRE
PROTECTION

Copyright © 2018 Kahler Slater, Inc. All rights reserved.
111 West Wisconsin Avenue, Milwaukee, Wisconsin
53203
Telephone 414.272.2000 Fax 414.272.2001
44 East Millin Street, Suite 700, Madison, Wisconsin
53703
Telephone 608.283.6300 Fax 608.283.6317
Sheet No.
F100

