

CONTRACTOR ABBREVIATION KEY	
ABBR:	DESCRIPTION:
C.M.	CONSTRUCTION MANAGER
E.C.	ELECTRICAL CONTRACTOR
G.C.	GENERAL CONTRACTOR
M.C.	MECHANICAL CONTRACTOR
N.C.C.	NURSE CALL CONTRACTOR
S.C.	SECURITY CONTRACTOR
T.C.	TECHNOLOGY CONTRACTOR

CONTACT PERSONS:	
DESCRIPTION:	PERSON:
PROJECT MANAGER	PAUL VANDUYNE JR
MECHANICAL ENGINEER	PAUL VANDUYNE JR
ELECTRICAL ENGINEER	KELSEY RICHMOND
TECHNOLOGY ENGINEER	DONALD PAUL

PLUMBING FIXTURE ROUGH-IN SCHEDULE					
NOTES: 1) SANITARY RISER UP IN WALL TO FIXTURE SHALL BE A MINIMUM OF 2". 2) 1/2" CW AND HW APPLIES ONLY TO THE FINAL VERTICAL RISE-DROP TO EACH FIXTURE. BRANCH PIPING TO VERTICAL RISE-DROP SHALL BE A MINIMUM OF 3/4" UNLESS NOTED OTHERWISE. 3) SIZES SHOWN ARE MINIMUMS. SIZES SHOWN ON THE DRAWING THAT ARE LARGER THAN THE SIZES LISTED IN THE SCHEDULE SHALL DICTATE THE ROUGH-IN SIZE.					
FIXTURE DESCRIPTION	DOMESTIC CW (NOTE 3)	DOMESTIC HW (NOTE 3)	SANITARY (NOTE 3)	VENT (NOTE 3)	REMARKS
CLINICAL SINK	1 1/2"	3/4"	4"	2"	-
ELECTRIC WATER COOLER	1/2"	-	1 1/4"	1 1/2"	-
FLOOR DRAIN/FLOOR SINK	-	-	2"	1 1/2"	-
HOSE BIBB	3/4"	-	-	-	-
LAVATORY	1/2"	1/2"	1 1/4"	1 1/4"	NOTES 1 & 2
SINK	1/2"	1/2"	1 1/2"	1 1/2"	NOTES 1 & 2
WATER CLOSET	1 1/2"	-	4"	2"	-

PLUMBING SYMBOL LIST	
NOT ALL SYMBOLS MAY APPLY.	
SYMBOL:	DESCRIPTION:
—AV—	ACID VENT
—AW—	ACID WASTE
—CW—	COLD WATER - POTABLE
—D—	DRAIN
—G—	NATURAL GAS
—HW140—	HOT WATER - POTABLE NUMBER INDICATES TEMP
—MV—	MEDICAL VACUUM
—O—	OXYGEN
—PD—	PUMPED DISCHARGE
—SAN—	SANITARY DRAINAGE
—SCW—	SOFT COLD WATER
—ST(1.000)—	STORM DRAINAGE (ROOF SQUARE FOOTAGE)
—STS—	STORM DRAINAGE (SECONDARY)
—STW—	SOFT TEMPERED WATER
—TW—	TEMPERED WATER
—V—	VENT
—VAC—	LAB VACUUM
—W—	SERVICE WATER - POTABLE
—WAGD—	WASTE ANESTHESIA GAS DISPOSAL
—	PIPE CONTINUATION
—	PIPE CAP
—	PIPE DOWN
—	PIPE UP OR UP/DOWN
—	PIPE SERVING FIXTURE ON FLOOR ABOVE (EXAMPLE: FD = FLOOR DRAIN)
—	PITCH PIPE IN DIRECTION
—	DIRECTION OF FLOW IN PIPE
—	ROUTE TO DRAIN
—	ROOF DRAIN PROPERTIES
—	NEW CONNECTION
—	DIELECTRIC CONNECTION
—	UNION/FLANGE
—	SHUTOFF VALVE NORMALLY OPEN
—	SHUTOFF VALVE NORMALLY CLOSED
—	BALANCING VALVE (NUMBER INDICATES GPM)
—	CHECK VALVE
—	SOLENOID VALVE
—	SAFETY/RELIEF VALVE
—	VACUUM BREAKER
—	PRESSURE GAUGE (FURNISHED WITH BALL VALVE)
—	PRESSURE SENSOR (FURNISHED WITH BALL VALVE)
—	REDUCER - REFERENCE SPECIFICATION FOR CONCENTRIC/ECCENTRIC AND FOT/F08
—	PRESSURE REDUCING VALVE (LIQUID/GAS)
—	PUMP
—	METER
—	ALIGNMENT GUIDE
—	PIPE ANCHOR
—	EXPANSION JOINT

PLUMBING ABBREVIATION KEY	
ABBR:	DESCRIPTION:
AD	ACCESS DOOR
AFF	ABOVE FINISHED FLOOR
BFP	BACKFLOW PREVENTER
BT	BATHTUB
CB	CATCH BASIN
CI	CAST IRON
CO	CLEANOUT
CS	CLINICAL SINK
DB	DIALYSIS BOX
DF	DRINKING FOUNTAIN
DI	DUCTILE IRON
E	EXISTING
EE	EMERGENCY EYEWASH
ES	EMERGENCY SHOWER
ESE	EMERGENCY SHOWER/EYEWASH
EWC	ELECTRIC WATER COOLER
FCO	FLOOR CLEANOUT
FD	FLOOR DRAIN
FM	FLOW METER
FS	FLOOR SINK
GD	GARBAGE DISPOSER
GI	GREASE INTERCEPTOR
HB	HOSE BIBB
IE	INVERT ELEVATION (FOR REFERENCE ONLY)
LAV	LAVATORY
MB	MOP BASIN
MH	MANHOLE
MV	MIXING VALVE
NC	NEW CONNECTION
NIC	NOT IN CONTRACT
NT	NEUTRALIZATION TANK
OS	OIL SEPARATOR
RD	ROOF DRAIN
SH	SHOWER
SK	SINK
SS	SERVICE SINK
TD	TRENCH DRAIN
TP	TRAP PRIMER
TYP	TYPICAL
UR	URINAL
VTR	VENT THROUGH ROOF
WC	WATER CLOSET
WCO	WALL CLEANOUT
WF	WASH FOUNTAIN
WH	WATER HEATER
WMF	WASHING MACHINE FIXTURE
WM	WATER METER
WS	WATER SOFTENER
UB	UTILITY BOX
UNO	UNLESS NOTED OTHERWISE
YCO	YARD CLEANOUT

MECHANICAL RENOVATION NOTES:

- THESE NOTES APPLY TO ALL MECHANICAL SHEETS AND TRADES, INCLUDING BUT NOT LIMITED TO, FIRE PROTECTION, PLUMBING, MEDICAL GAS, VENTILATION, PIPING AND TEMPERATURE CONTROL.
- EXISTING CONDITIONS ARE SHOWN BASED ON INFORMATION OBTAINED FROM FIELD SURVEYS, EXISTING BUILDING DOCUMENTS, AND STAFF. VERIFY EXISTING CONDITIONS AND REPORT ANY CONFLICTS BEFORE PROCEEDING.
 - NOT ALL EXISTING DUCTWORK AND PIPING IS SHOWN. VERIFY EXISTING CONDITIONS BEFORE STARTING WORK. NOTIFY ENGINEER OF ANY CONFLICTS WITH NEW WORK.
 - FIELD VERIFY THE AVAILABLE CLEARANCES FOR DUCTWORK AND PIPING BEFORE FABRICATION. RISES AND DROPS MAY BE NECESSARY BECAUSE OF EXISTING FIELD CONDITIONS.
 - EACH CONTRACTOR SHALL FIELD VERIFY ACCESSIBILITY TO THE AREA OF HIS/HER WORK AND SHALL NOTIFY THE GENERAL CONTRACTOR PRIOR TO BIDDING IF OTHER UTILITIES ARE REQUIRED TO BE REMOVED OR RELOCATED TO ALLOW ACCESS TO HIS/HER AREA OF WORK.
 - THE GENERAL CONTRACTOR IS RESPONSIBLE FOR CUTTING, REMOVAL AND PATCHING OF ROOFS, WALLS, AND FLOORS ASSOCIATED WITH WORK BY ALL CONTRACTORS. CONTRACTORS SHALL NOTIFY THE GC OF AFFECTED AREAS PRIOR TO BIDDING.
 - THE GENERAL CONTRACTOR IS RESPONSIBLE FOR REMOVAL AND REPLACEMENT OF CEILINGS, CEILING TILES, AND CEILING GRIDS ASSOCIATED WITH AREAS OF WORK BY ALL CONTRACTORS. NOTIFY THE GENERAL CONTRACTOR OF AFFECTED AREAS PRIOR TO BIDDING.
 - WHERE EXISTING MECHANICAL SYSTEMS ARE LOCATED IN AREAS THAT CONFLICT WITH NEW EQUIPMENT, PIPING, OR DUCTWORK TO BE INSTALLED, EACH CONTRACTOR SHALL EITHER ARRANGE NEW EQUIPMENT, PIPING, OR DUCTWORK IN SUCH A FASHION THAT IT DOES NOT CONFLICT WITH EXISTING SYSTEMS, OR REWORK EXISTING MECHANICAL SYSTEMS TO ALLOW FOR INSTALLATION OF NEW EQUIPMENT, PIPING, OR DUCTWORK.
 - PROVIDE TEMPORARY CONNECTIONS TO MAINTAIN EXISTING SYSTEMS IN SERVICE DURING CONSTRUCTION. MAINTAIN ACCESS TO EXISTING MECHANICAL INSTALLATIONS THAT REMAIN ACTIVE.
 - OBTAIN PERMISSION FROM OWNER BEFORE SHUTTING DOWN ANY SYSTEM FOR ANY REASON. MAINTAIN SERVICE TO ALL COMPONENTS THAT ARE TO REMAIN UNTIL NEW SYSTEMS ARE INSTALLED.
 - MAINTAIN EXISTING SYSTEM IN SERVICE UNTIL NEW SYSTEM IS COMPLETE AND READY FOR TIE IN AND SWITCHOVER. DRAIN SYSTEM ONLY TO MAKE SWITCHOVERS AND CONNECTIONS. OBTAIN PERMISSION FROM OWNER BEFORE PARTIALLY OR COMPLETELY DRAINING SYSTEM. MAKE CHANGEOVER TO NEW SYSTEMS WITH MINIMUM OUTAGE.
 - DISCONNECT AND REMOVE MECHANICAL DEVICES AND EQUIPMENT SERVING EQUIPMENT THAT HAS BEEN REMOVED.

MECHANICAL PHASING NOTES:

- THESE NOTES APPLY TO ALL MECHANICAL SHEETS AND TRADES, INCLUDING BUT NOT LIMITED TO, FIRE PROTECTION, PLUMBING, MEDICAL GAS, VENTILATION, PIPING AND TEMPERATURE CONTROL.
- REFER TO ARCHITECTURAL DRAWINGS FOR GENERAL DESCRIPTION OF PHASES. REFER TO ARCHITECT'S INSTRUCTIONS FOR MORE DETAILS, PHASING SCHEDULES AND FOR CONCURRENT WORK. MECHANICAL, ELECTRICAL AND TECHNOLOGY DRAWINGS DEPICT THE INTENT OF THE FINAL DESIGN. THE MECHANICAL, ELECTRICAL, AND TECHNOLOGY DRAWINGS DO NOT DEPICT THE MEANS AND METHODS TO MEET THE REQUIREMENTS OF THE PHASING CRITERIA.
 - REVIEW PROJECT PHASING PLANS TO COORDINATE DEMOLITION WORK, OUTAGES, ETC. WITH AFFECTED ADJACENT AREAS.
 - PROVIDE TEMPORARY DUCTWORK, PIPING, SHUTOFF VALVES, ZONE VALVES, ZONE ALARMS, ETC. AS NEEDED TO MAINTAIN SERVICE TO ALL AREAS DURING ALL PHASES OF PROJECT.
 - INSTALL TEMPORARY DUCTWORK, PIPING, SHUTOFF VALVES, ETC. AS NECESSARY TO KEEP ALL OCCUPIED SPACES OPERATIONAL THROUGHOUT ALL PHASES OF THE PROJECT.
 - PHASE DEMOLITION WORK TO MINIMIZE DOWNTIME.

PLUMBING SHEET INDEX

P000	PLUMBING COVER SHEET
PD100	UNDER FLOOR DEMOLITION PLAN-PLUMBING
PD101	LOWER LEVEL DEMOLITION PLAN - PLUMBING
P100	UNDER FLOOR PLAN-PLUMBING
P101	LOWER LEVEL FLOOR PLAN - PLUMBING
P102	ROOF PLAN - PLUMBING
P200	PLUMBING MATERIAL LIST
P301	SANITARY & VENT RISER DIAGRAM
P300	DOMESTIC WATER RISER DIAGRAM

WATER CALCULATION WORKSHEET - SOFTENED HOT WATER

CALCULATE THE PRESSURE AVAILABLE FOR UNIFORM LOSS (VALUE OF "A")		
B. PRESSURE AVAILABLE AFTER THE BUILDING CONTROL VALVE (FROM #9 ABOVE):	VALUE OF "B"	81.7
C. PRESSURE LOSS OF WATER METER (WHEN METER IS REQUIRED)	SUBTRACT VALUE OF "C"	0.0
D. PRESSURE AT CONTROLLING FIXTURE: CONTROLLING FIXTURE IS: EMERGENCY EYEWASH & ASSOCIATED MXING VALVE	SUBTOTAL SUBTRACT VALUE OF "D"	81.7 35.0
E. DIFFERENCE IN ELEVATION BETWEEN BUILDING CONTROL VALVE AND THE CONTROLLING FIXTURE IN FEET: 10 X 0.434 PSIFT	SUBTOTAL SUBTRACT VALUE OF "E"	46.7 21.7
F. PRESSURE LOSS DUE TO WATER TREATMENT DEVICES AND BACKFLOW PREVENTERS WHICH SERVE THE CONTROLLING FIXTURE (WATER SOFTENERS, FILTERS, ETC.) PRESSURE LOSS DUE TO WATER SOFTENER & BACKFLOW PREVENTER	SUBTOTAL	25.0
F1. WSFU DOWNSTREAM OF WATER TREATMENT DEVICE:	1000 WSFU	
F2. CONVERT WSFU TO GPM USING TABLE 382.40-3:	210 GPM	
F3. CONVERT WSFU TO GPM USING TABLE 382.40-3E* (FOR INDIVIDUAL DWELLING UNITS ONLY)	0 GPM	
F4. REFER TO MANUF. GRAPH TO OBTAIN PRESSURE LOSS:	SUBTRACT VALUE OF "F4"	8.0
G. BOOSTER PUMP	ADD VALUE OF "G"	0
H. PRESSURE LOSS FOR FUTURE ALLOWANCE:	SUBTOTAL SUBTRACT VALUE OF "H"	17.0 0
I. PRESSURE LOSS THROUGH TANKLESS WATER HEATERS, COMBINATION BOILER/WATER HEATERS, HEAT EXCHANGERS WHICH SERVE THE CONTROLLING FIXTURE:	SUBTOTAL SUBTRACT VALUE OF "I"	17.0 8.0
J. DEVELOPED LENGTH FROM BUILDING CONTROL VALVE TO CONTROLLING FIXTURE IN FEET: 300 FEET X 1.5:	SUBTOTAL DIVIDE BY VALUE OF "J"	9.0 450
A. PRESSURE AVAILABLE FOR UNIFORM LOSS	MULTIPLY BY:	0.02
WATER DISTRIBUTION PIPING IS: COPPER, TYPE L	A (PSI/100 FT)	100 2.0
BOOSTER PRESSURE REQUIRED		0 PSI

Revisions	
Date	Description

CONSTRUCTION DOCUMENTS

Drawing Date
07/10/2018

MAYO CLINIC HEALTH SYSTEM CENTER FOR ADVANCED MEDICINE & SURGERY BUILDING ADDITION AND ALTERATIONS

700 West Avenue South, La Crosse, WI 54601

Project No.
217050

Sheet Title

PLUMBING COVER SHEET

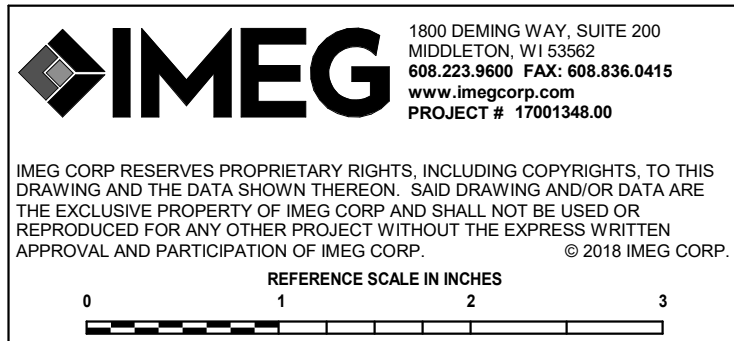
Copyright © 2018 Kahler Slater, Inc. All rights reserved.

111 West Wisconsin Avenue, Milwaukee, Wisconsin 53203
Telephone 414.272.2000 Fax 414.272.2001

44 East Millin Street, Suite 700, Madison, Wisconsin 53703
Telephone 608.283.6300 Fax 608.283.6317

Sheet No.

P000



- KEYNOTES: **C** #
1. REMOVE EXISTING PLUMBING PIPING BACK TO MAIN AND CAP. REFER TO P101 FOR NEW REQUIREMENTS.
 2. REMOVE EXISTING PLUMBING PIPING AND PREPARE FOR NEW CONNECTION. REFER TO P101 FOR NEW REQUIREMENTS.

FINISH FLOOR
56.60'



1

UNDER FLOOR DEMOLITION PLAN-PLUMBING

1/8" = 1'-0"



1800 DEMING WAY, SUITE 200
MILWAUKEE, WI 53202
608.223.8600 FAX: 608.836.0415
www.imegcorp.com
PROJECT # 1700348.00

IMEG CORP. RESERVES PROPRIETARY RIGHTS, INCLUDING COPYRIGHTS, TO THIS DRAWING AND THE DATA SHOWN THEREON. NO DATA SHOWN OR DATA ARE THE EXCLUSIVE PROPERTY OF IMEG CORP. AND SHALL NOT BE USED OR REPRODUCED FOR ANY OTHER PROJECT WITHOUT THE EXPRESS WRITTEN APPROVAL AND PARTICIPATION OF IMEG CORP.

REFERENCE SCALE IN INCHES
0 1 2 3

Revisions	
Date	Description

CONSTRUCTION
DOCUMENTS

Drawing Date
07/10/2018

MAYO CLINIC HEALTH
SYSTEM CENTER FOR
ADVANCED MEDICINE
& SURGERY BUILDING
ADDITION AND
ALTERATIONS

700 West Avenue South, La Crosse, WI 54601

Project No. MCHS
217050

Sheet Title
UNDER FLOOR
DEMOLITION
PLAN-PLUMBING

Copyright © 2018 Kahler Slater, Inc. All rights reserved.
111 West Wisconsin Avenue, Milwaukee, Wisconsin
53203
Telephone 414.272.2000 Fax 414.272.2001
44 East Millin Street, Suite 700, Madison, Wisconsin
53703
Telephone 608.283.6300 Fax 608.283.6317

Sheet No.
PD100

KEYNOTES: (B)

1. REMOVE EXISTING PLUMBING PIPING BACK TO MAIN AND CAP. REFER TO P101 FOR NEW REQUIREMENTS.
2. REMOVE EXISTING PLUMBING PIPING AND PREPARE FOR NEW CONNECTION. REFER TO P101 FOR NEW REQUIREMENTS.
3. REMOVE EXISTING AQUARIUM AND ALL ASSOCIATED DOMESTIC WATER, BACK FLOW PREVENTER, VENT, SAN CONNECTIONS AND FLOOR DRAIN.
4. REMOVE EXISTING ICE MAKER AND COFFEE MAKER AND ALL ASSOCIATED DOMESTIC WATER, BACK FLOW PREVENTERS, VENT, SAN CONNECTIONS AND DRAIN.

Revisions

Date	Description
------	-------------

CONSTRUCTION DOCUMENTS

Drawing Date

07/10/2018

MAYO CLINIC HEALTH SYSTEM CENTER FOR ADVANCED MEDICINE & SURGERY BUILDING ADDITION AND ALTERATIONS

700 West Avenue South, La Crosse, WI 54601

Project No. MCHS

217050

Sheet Title

LOWER LEVEL DEMOLITION PLAN - PLUMBING

Copyright © 2018 Kahler Slater, Inc. All rights reserved.

111 West Wisconsin Avenue, Milwaukee, Wisconsin

53023 Telephone 414.272.2000 Fax 414.272.2001

44 East Millin Street, Suite 700, Madison, Wisconsin

53703 Telephone 608.283.6300 Fax 608.283.6317

Sheet No.

PD101



IMEG CORP. PRESERVES PROPRIETARY RIGHTS, INCLUDING COPYRIGHTS, TO THIS DRAWING AND THE DATA SHOWN THEREON. NO DRAWING AND/OR DATA ARE TO BE REPRODUCED FOR ANY OTHER PROJECT WITHOUT THE EXPRESS WRITTEN APPROVAL AND PARTICIPATION OF IMEG CORP.

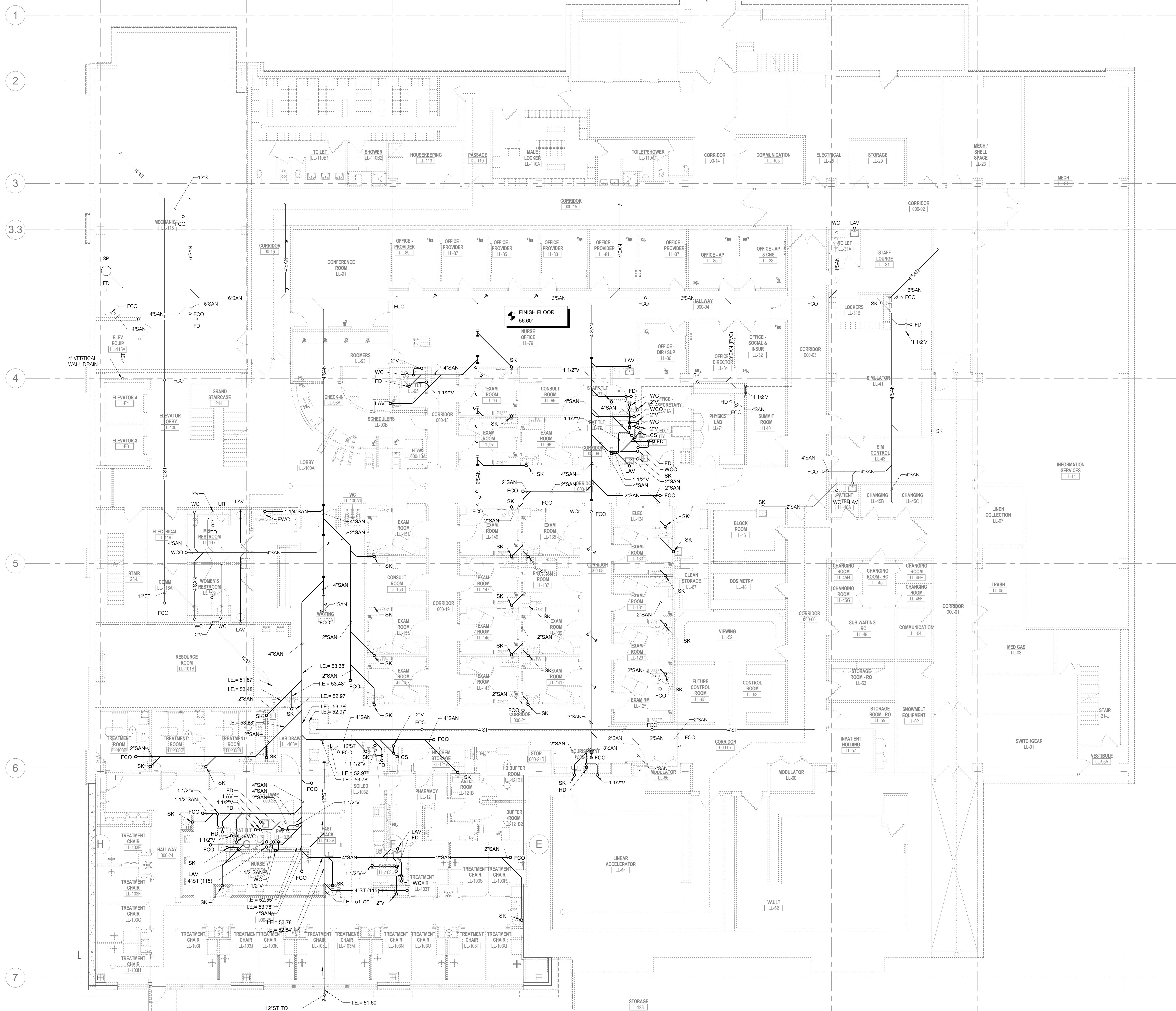
REFERENCE SCALE IN INCHES



1

LOWER LEVEL DEMOLITION PLAN-PLUMBING

1/8" = 1'-0"



Revisions	
Date	Description

CONSTRUCTION
DOCUMENTS

Drawing Date
07/10/2018

MAYO CLINIC HEALTH
SYSTEM CENTER FOR
ADVANCED MEDICINE
& SURGERY BUILDING
ADDITION AND
ALTERATIONS

700 West Avenue South, La Crosse, WI 54601

Project No.	MCHS
217050	

Sheet Title

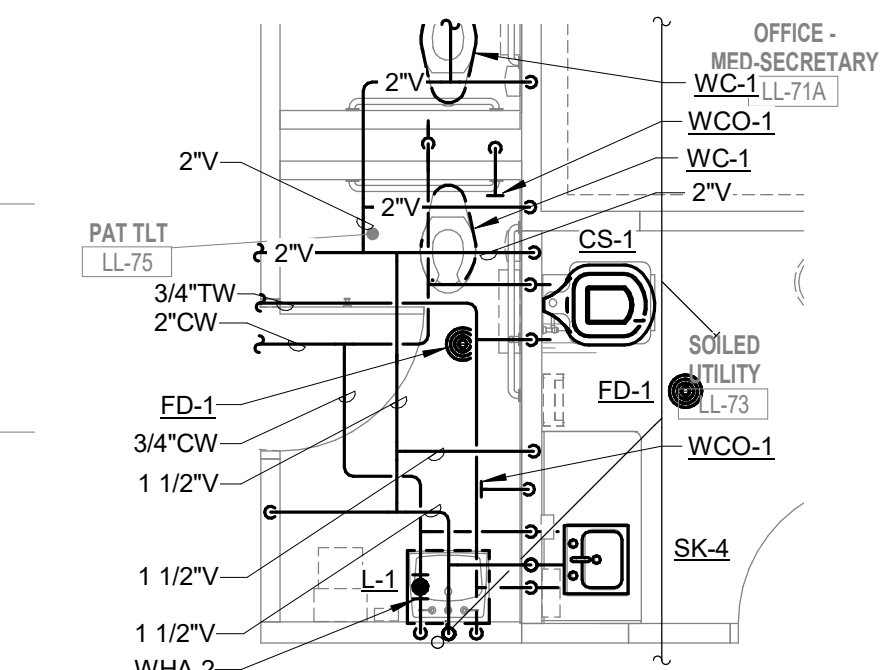
UNDER FLOOR
PLAN-PLUMBING

Copyright © 2018 Kahler Slater, Inc. All rights reserved.
111 West Wisconsin Avenue, Milwaukee, Wisconsin
53203
Telephone 414.272.2000 Fax 414.272.2001
44 East Mifflin Street, Suite 700, Madison, Wisconsin
53703
Telephone 608.283.6300 Fax 608.283.6317

Sheet No.
P100

KEYNOTES: (#)

1. PROVIDE BFP-1 AND 1/2" CW CONNECTION TO OWNER FURNISHED COFFEE MAKER. INSTALL BFP UPSTREAM OF FILTER. BFP AND SHUT OFF VALVE SHALL BE CONCEALED IN ADJACENT CASEWORK. PROVIDE 2" HUB DRAIN CONCEALED IN ADJACENT CASEWORK UNDER SINK FOR COOLING CONDENSATE FROM COFFEE MAKER. FIELD VERIFY EXACT LOCATION.
2. PROVIDE BFP-2 AND 1/2" CW CONNECTION TO OWNER FURNISHED ICE MAKER. INSTALL BFP UPSTREAM OF FILTER. BFP AND SHUT OFF VALVE SHALL BE CONCEALED IN ADJACENT CASEWORK. PROVIDE 2" HUB DRAIN CONCEALED IN ADJACENT CASEWORK UNDER SINK FOR COOLING CONDENSATE FROM ICE MAKER. FIELD VERIFY EXACT LOCATION.
3. CAP EXISTING PIPING.



ENLARGED PLAN
PATIENT TOILET



2

1/4" = 1'-0"

Revisions	Date	Description
-----------	------	-------------

CONSTRUCTION
DOCUMENTS

Drawing Date
07/10/2018

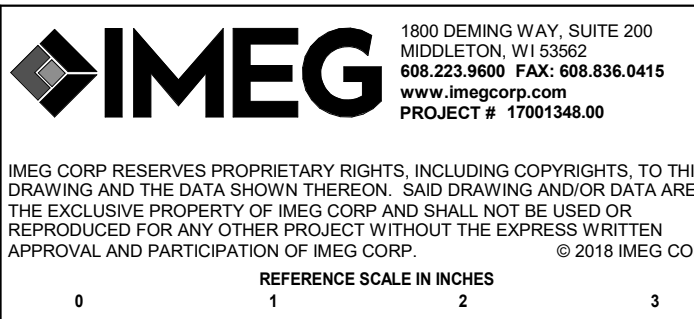
MAYO CLINIC HEALTH
SYSTEM CENTER FOR
ADVANCED MEDICINE
& SURGERY BUILDING
ADDITION AND
ALTERATIONS

700 West Avenue South, La Crosse, WI 54601

Project No. MCHS
217050

Sheet Title
LOWER LEVEL FLOOR
PLAN - PLUMBING

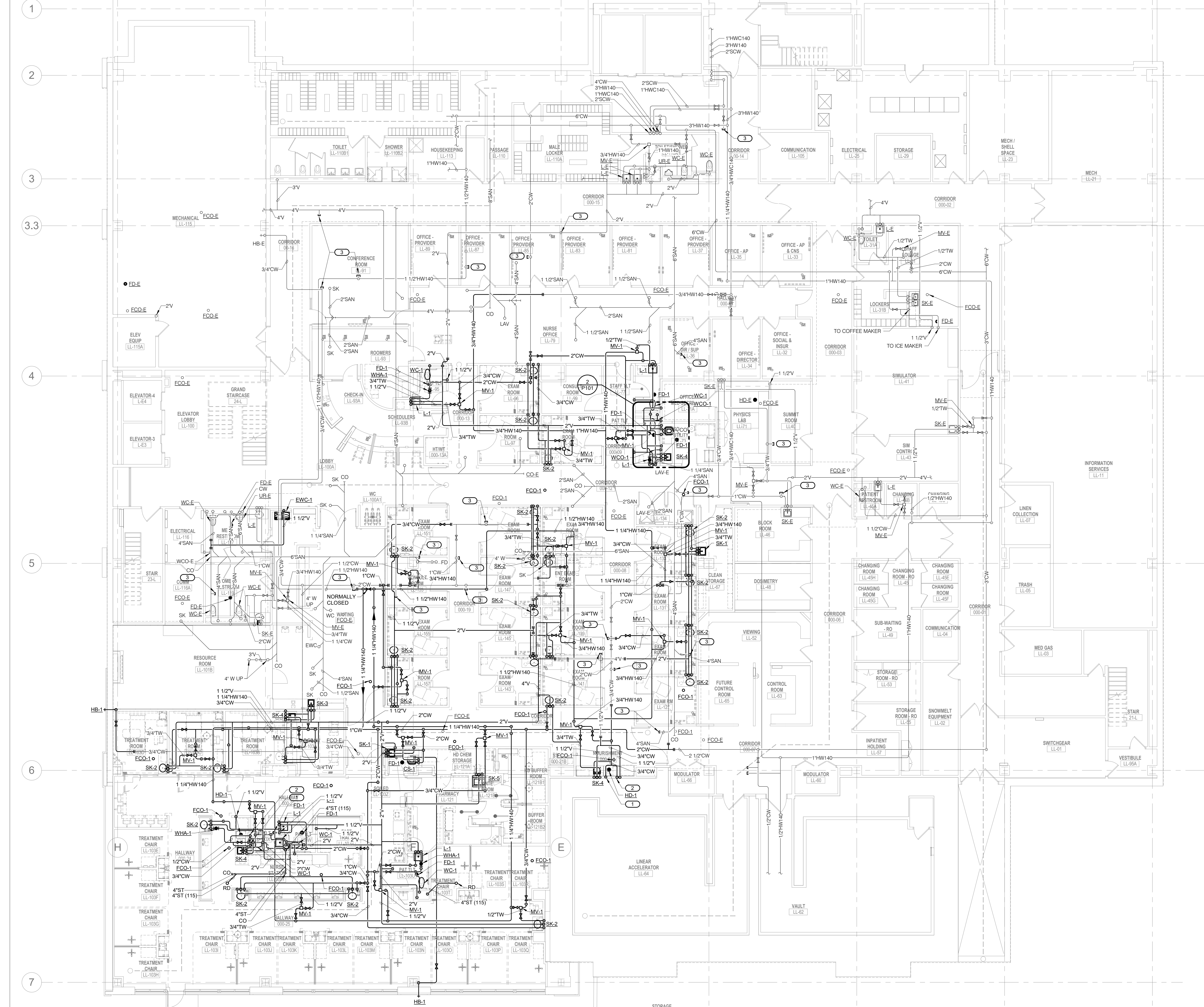
Copyright © 2018 Kahler Slater, Inc. All rights reserved.
111 West Wisconsin Avenue, Milwaukee, Wisconsin
53203
Telephone 414.272.2000 Fax 414.272.2001
44 East Millin Street, Suite 700, Madison, Wisconsin
53703
Telephone 608.283.6300 Fax 608.283.6317
Sheet No.
P101



1

LOWER LEVEL FLOOR PLAN-PLUMBING

1/8" = 1'-0"






1

ROOF PLAN - PLUMBING

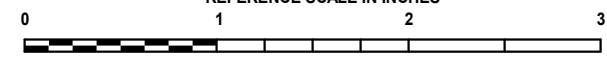
1/8" = 1'-0"



1000 DEMING WAY, SUITE 200
MILWAUKEE, WI 53262
608.223.8600 FAX: 608.836.0415
www.imegcorp.com
PROJECT # 1700348.00

IMEG CORP. RESERVES PROPRIETARY RIGHTS, INCLUDING COPYRIGHTS, TO THIS DRAWING AND THE DATA SHOWN THEREON. NO DRAWING AND/OR DATA ARE THE EXCLUSIVE PROPERTY OF IMEG CORP. AND SHALL NOT BE USED OR REPRODUCED FOR ANY OTHER PROJECT WITHOUT THE EXPRESS WRITTEN APPROVAL AND PARTICIPATION OF IMEG CORP.
© 2018 IMEG CORP.

0 1 2 3
REFERENCE SCALE IN INCHES



Revisions	
Date	Description

CONSTRUCTION DOCUMENTS

Drawing Date
07/10/2018

MAYO CLINIC HEALTH
SYSTEM CENTER FOR
ADVANCED MEDICINE
& SURGERY BUILDING
ADDITION AND
ALTERATIONS

700 West Avenue South, La Crosse, WI 54601

Project No. MCHS
217050

Sheet Title
ROOF PLAN - PLUMBING

Copyright © 2018 Kahler Slater, Inc. All rights reserved.
111 West Wisconsin Avenue, Milwaukee, Wisconsin
53203
Telephone 414.272.2000 Fax 414.272.2001
44 East Millin Street, Suite 700, Madison, Wisconsin
53703
Telephone 608.283.6300 Fax 608.283.6317

Sheet No.
P102

PLUMBING FIXTURE SCHEDULE

TAG NAME	DESCRIPTION	MANF. & MODEL
BFP-1	BACK FLOW PREVENTER - DUAL CHECK WITH ATMOSPHERIC PORT, LEAD FREE STAINLESS STEEL BODY, STRAINER, HEAVY DUTY FDA APPROVED RUBBER DIAPHRAGMS, 3/8" SIZE, RATED FOR 150 PSI AT 33°F TO 130°F, APPROVED BY ASSE 1032	WATTS (SD-3), WILKINS (740)
BFP-2	PROVIDE 3/8" DRAINAGE TUBING FROM DISCHARGE PORT TO NEARBY DRAIN.	
BFP-2	BACK FLOW PREVENTER - DUAL CHECK, LEAD FREE STAINLESS STEEL BODY, HEAVY DUTY FDA APPROVED RUBBER DIAPHRAGMS, 3/8" SIZE, RATED FOR 150 PSI AT 33°F TO 110°F, APPROVED BY ASSE 1032	WATTS (SD-2)
CS-1	CLINICAL SINK - FLOOR MOUNTED, WHITE VITREOUS CHINA, SIPHON JET FLUSHING RIM, 1-1/2" TOP SPUD, STAINLESS STEEL RIM GUARDS. FLUSH VALVE - EXPOSED, BRASS CONSTRUCTION, CHROME-PLATED FINISH, 1" I.P.S., SCREWDRIVER STOP-CHECK VALVE, CHEMICAL RESISTANT MATERIAL, WALL AND SPUD FLANGES. BEDPAN WASHER - WALL MOUNTED, BRASS CONSTRUCTION, SELF-CLOSING DOUBLE FOOT CONTROL, MIXING VALVE WITH INTEGRAL STOPS, OUTLET TO WALL WITH VOLUME CONTROL, HOSE WITH INSULATED HANDLE, ANGLE SPRAY NOZZLE, ELEVATED CHROME-PLATED VACUUM BREAKER, EXPOSED PIPING, FITTINGS, AND FLANGES SHALL BE CHROME-PLATED. SINK FAUCET - WALL MOUNTED, BRASS CONSTRUCTION, CHROME-PLATED FINISH, ADJUSTABLE INLETS, 8" SPOUT WITH INTEGRAL 3/4" HOSE THREADED OUTLET AND VACUUM BREAKER, CHECK STOPS, QUARTER-TURN 8" WRIST BLADE HANDLES, PAIL HOOK, FORKED WALL BRACE. EWC-1 ELECTRIC WATER COOLER - WALL HUNG, BI-LEVEL UNITS, ADA COMPLIANT WITH MATCHING STAINLESS STEEL APRON INSTALLED UNDER UPPER UNIT 18 GAUGE STAINLESS STEEL CABINETS AND NON-SPLASH BASINS WITH STAINLESS STEEL FINISH, STREAM PROJECTORS WITH PROTECTIVE HOODS, PUSH BAR OR LEVER OPERATING CONTROLS ON FRONT AND BOTH SIDES, BUILT-IN FLOW REGULATOR, PLASTIC P-TRAP ASSEMBLY, ADJUSTABLE THERMOSTAT, MOUNTING ACCESSORIES, TANK DRAIN AND ANGLE STOPS, HERMETIC COMPRESSOR TO OPERATE ON HFC-134a REFRIGERANT COMPLIANT TO LATEST ANSI A117.1 AND ADA STANDARDS. UNIT SHALL COMPLY WITH FEDERAL ACT 5.3874. BOTTLE FILLING STATION - UNIT MOUNTED, STAINLESS STEEL CONSTRUCTION AND FINISH, INTEGRAL DRAIN, SENSOR OPERATED WITH AUTOMATIC SHUTOFF, BOTTLE COUNTER. UNIT SHALL PROVIDE 8.0 GPH OF WATER FROM 80°F TO 50°F AT 90°F AMBIENT. WATER SYSTEM SHALL BE OF LEAD FREE CONSTRUCTION. TANK SHALL BE TESTED TO 125 PSIG. ORIFICE SHALL BE AT 36" (MAXIMUM) ABOVE FINISHED FLOOR ON LOWER UNIT AND 40" ABOVE FINISHED FLOOR ON UPPER UNIT. BOTTOM OF APRON SHALL BE 27" ABOVE FLOOR ON LOWER UNIT IN COMPLIANCE WITH LATEST ADA STANDARDS. ELECTRICAL REQUIREMENTS - 115V-1 PHASE, CORD AND PLUG, 1/5 HP MOTOR	CLINICAL SINK - KOHLER (K-6676), AMERICAN STANDARD (9504.010), ZURN (Z5420) FLUSH VALVE - SLOAN (REGAL 117), DELANY (418), ZURN (Z8017) BEDPAN WASHER - KOHLER (K-13960), CHICAGO FAUCET (9100), CHG (K29), DELTA (5471), SPEAKMAN (S-3231), T&S BRASS (B-0676) SINK FAUCET - ZURN (Z8426), DELTA (28C2), SPEAKMAN (SC-5856) ELKAY (EZ3TL8), MURDOCK (A172), HALSEY TAYLOR (HTHB-HAC8BL)
FD-1	FLOOR DRAIN - CAST IRON BODY, NICKEL BRONZE ADJUSTABLE TOP, 6" ROUND, 2" BOTTOM OUTLET, FLASHING COLLAR, SURFACE MEMBRANE CLAMP, DEEP SEAL TRAP	FLOOR DRAIN - ZURN (Z-415), SMITH (2005), WADE (1100), JOSAM (30000), WATTS (FD-100), MIFAB (F1100), SUN (FD1000)
HB-1	HOSE BIBB - FREEZELESS WALL HYDRANT, BRASS VALVE BODY AND SEAT, STANDARD FINISH, NON-FERROUS METAL STEM, AUTOMATIC DRAINING, VACUUM BREAKER, 3/4" MALE HOSE THREAD, WALL CLAMP, KEY OPERATED, ASSE 1019 OR 1052 LISTED AND APPROVED. VERIFY NUMBER OF KEY OPERATORS TO BE PROVIDED WITH OWNER. MOUNT AT 18" ABOVE GRADE UNLESS NOTED OTHERWISE ON DRAWINGS.	PRIER (C-634), WOODFORD (67), WATTS (6Y-420), MIFAB (MIF-10), SMITH (5619), WADE (8600), ZURN (Z1310)
HD-1	HUB DRAIN - OPEN SITE HUB DRAIN, CAST IRON BODY, SEDIMENT BUCKET, 2" BOTTOM OUTLET, DEEP SEAL TRAP	HUB DRAIN - ZURN (Z-211-S-Y), SMITH (2035-HUB), SUN (FD1000 W/S100-U)
L-1	LAVATORY - ACCESSIBLE, WALL MOUNTED, WHITE VITREOUS CHINA, 20"x18", 4" HIGH CONTOURED BACKSPLASH, SINGLE FAUCET HOLE, DRILLED FOR CONCEALED ARM CARRIER. LAVATORY TRIM - TWO HANDLE MIXING FAUCET, BRASS CONSTRUCTION, CHROME-PLATED FINISH, GOOSENECK RIGID SPOUT, NOMINAL 8" REACH, LAMINAR FLOW OUTLET, LEVER BLADE 4" WRISTBLADE HANDLES AT 8" CENTERS, 1/4-TURN OPERATION CERAMIC DISC CARTRIDGE. MAXIMUM FLOW TO BE 2.2 GPM IN COMPLIANCE WITH ENERGY POLICY ACT OF 2005 AND ASME/ANSI STANDARD A112.18.1M. FAUCET SHALL COMPLY WITH FEDERAL ACT 5.3874, PROVIDE RESTRICTIVE DEVICE AND ESCUTCHEON PLATE AS REQUIRED. ACCESSORIES - OFFSET 1-1/2" 17 GAUGE CHROME-PLATED BRASS TAILPIECE AND P-TRAP, QUARTER TURN BALL VALVE TYPE 3/8" CHROME-PLATED BRASS ANGLE SUPPLIES WITH LOOSE KEY STOPS, CHROME-PLATED SOFT COPPER SUPPLY LINES. MOUNT LAVATORY WITH SUPPORT CARRIER BOLTED SECURELY TO FLOOR. TOP OF RIM SHALL BE AT 34" ABOVE FLOOR IN COMPLIANCE WITH LATEST ADA STANDARD. PROVIDE 2" MINIMUM CLEARANCE FROM FLOOR TO BOTTOM OF APRON IN COMPLIANCE WITH LATEST ANSI A117.1 AND ADA STANDARDS. ARMAFLEX WITH TAPE IS NOT ACCEPTABLE IN LIEU OF INSULATION KIT.	LAVATORY - AMERICAN STANDARD (0356.421), KOHLER (K-2007), SLOAN (SS-3103), TOTO (LT307), ZURN (Z5361) LAVATORY TRIM - CHICAGO FAUCET (786), AMERICAN STANDARD (7230.000), MOEN (8225), SPEAKMAN (SC-3000 SERIES), ZURN (Z831-XL) INSULATION KIT - TRUEBRO (LAV-GUARD), BROCAR PRODUCTS (TRAP WRAP), MCGUIRE (PROWRAP), PLUMBEREX (PRO-EXTREME)
MV-1	MIXING VALVE - POINT-OF-USE ANTI-SCALD THERMOSTATIC MIXING VALVE ARRANGEMENT FOR TEMPERED WATER CONTROL, ALL BRONZE/BRASS CONSTRUCTION, ROUGH FINISH, UNION/THREADED INLETS WITH STRAINERS, COMBINATION CHECK STOPS OR SEPARATE SUPPLY CHECK VALVES AND SHUT OFF VALVES. RATED FOR 7 GPM OUTPUT MAXIMUM AT 15 PSI DIFFERENTIAL AND 0.5 GPM OUTPUT MINIMUM. UNIT TO MIX 140 DEGREE F HOT WATER SUPPLY AND 40 DEGREE F COLD WATER SUPPLY FOR 115 DEGREE F OUTLET. UNIT SHALL BE ASSE 1070 LISTED AND APPROVED. VALVE SHALL COMPLY WITH FEDERAL ACT 5.3874.	LEONARD (270-LF), ACORN CONTROLS (S177069), APOLLO (34BLF), BRADLEY (S59 SERIES), LAWLER (31070), POWERS (SERIES LFLM495), SYMMONS (MAXLINE SERIES), WATTS (LMMV), WILKINS (ZW1070XL)
RD-1	ROOF DRAIN - CAST IRON BODY, SECURED CAST IRON DOME, 15" ROUND, BOTTOM OUTLET, FLASHING CLAMP, GRAVEL STOP, UNDERDRAIN CLAMP, BEARING PAN, ADJUSTABLE EXTENSION TO MATCH INSULATION THICKNESS, OUTLET SIZE AS LISTED ON DRAWINGS.	ZURN (Z-100), SMITH (1010), WADE (3000), JOSAM (21500), WATTS (RD-300), MIFAB (R1200), SUN (RD4000), FROET (200C)
SK-1	SINK - ACCESSIBLE, WALL MOUNTED, WHITE VITREOUS CHINA, 20"x18", 4" HIGH CONTOURED BACKSPLASH, FAUCET HOLES ON 8" CENTERS, DRILLED FOR CONCEALED ARM CARRIER. SINK TRIM - TWO HANDLE MIXING FAUCET, BRASS CONSTRUCTION, CHROME-PLATED FINISH, GOOSENECK RIGID SPOUT, NOMINAL 8" REACH, LAMINAR FLOW OUTLET, 4" WRISTBLADE HANDLES AT 8" CENTERS, 1/4-TURN OPERATION CERAMIC DISC CARTRIDGE. MAXIMUM FLOW TO BE 2.2 GPM IN COMPLIANCE WITH ENERGY POLICY ACT OF 2005 AND ASME/ANSI STANDARD A112.18.1M. FAUCET SHALL COMPLY WITH FEDERAL ACT 5.3874, PROVIDE RESTRICTIVE DEVICE AND ESCUTCHEON PLATE AS REQUIRED. ACCESSORIES - OFFSET 1-1/2" 17 GAUGE CHROME-PLATED BRASS TAILPIECE AND P-TRAP, QUARTER TURN BALL VALVE TYPE 3/8" CHROME-PLATED BRASS ANGLE SUPPLIES WITH STOPS, CHROME-PLATED SOFT COPPER SUPPLY LINES. MOUNT SINK WITH SUPPORT CARRIER BOLTED SECURELY TO FLOOR. TOP OF RIM SHALL BE AT 34" ABOVE FLOOR IN COMPLIANCE WITH LATEST ADA STANDARD. PROVIDE 2" MINIMUM CLEARANCE FROM FLOOR TO BOTTOM OF APRON IN COMPLIANCE WITH LATEST ANSI A117.1 AND ADA STANDARDS. ARMAFLEX WITH TAPE IS NOT ACCEPTABLE IN LIEU OF INSULATION KIT.	SINK - AMERICAN STANDARD (0356.015), KOHLER (K-2006), SLOAN (SS-3803), TOTO (LT307), ZURN (Z5368) SINK TRIM - CHICAGO FAUCET (786), AMERICAN STANDARD (7230.000), MOEN (8225), SPEAKMAN (SC-3000 SERIES), ZURN (Z831-XL) INSULATION KIT - TRUEBRO (LAV-GUARD), BROCAR PRODUCTS (TRAP WRAP), MCGUIRE (PROWRAP), PLUMBEREX (PRO-EXTREME)
SK-2	SINK - PROVIDED AND INSTALLED BY OTHERS. SINK TRIM - TWO HANDLE MIXING FAUCET, BRASS CONSTRUCTION, CHROME-PLATED FINISH, GOOSENECK RIGID SPOUT, NOMINAL 8" REACH, LAMINAR FLOW OUTLET, 4" WRISTBLADE HANDLES AT 8" CENTERS, 1/4-TURN OPERATION CERAMIC DISC CARTRIDGE. MAXIMUM FLOW TO BE 2.2 GPM IN COMPLIANCE WITH ENERGY POLICY ACT OF 2005 AND ASME/ANSI STANDARD A112.18.1M. FAUCET SHALL COMPLY WITH FEDERAL ACT 5.3874, PROVIDE RESTRICTIVE DEVICE AND ESCUTCHEON PLATE AS REQUIRED. ACCESSORIES - OFFSET 1-1/2" 17 GAUGE CHROME-PLATED BRASS TAILPIECE AND P-TRAP, QUARTER TURN BALL VALVE TYPE 3/8" CHROME-PLATED BRASS ANGLE SUPPLIES WITH STOPS, CHROME-PLATED SOFT COPPER SUPPLY LINES.	SINK TRIM - CHICAGO FAUCET (786), AMERICAN STANDARD (7230.000), MOEN (8225), SPEAKMAN (SC-3000 SERIES), ZURN (Z831-XL)
SK-3	SINK - ACCESSIBLE, SELF-RIMMING SINGLE COMPARTMENT WITH FAUCET DECK AND OVERFLOW, 18 GAUGE TYPE 304 STAINLESS STEEL, 18" (SIDE-TO-SIDE) x 17.5" (FRONT-TO-BACK) OVERALL SIZE, 12" x 12" x 6" DEEP BOWL, COMPLETELY UNDERCOATED, 3-1/2" DIAMETER DRAIN OUTLET LOCATION OFF-CENTERED REAR IN BOWL, PERFORATED TYPE 304 STAINLESS STEEL GRID STRAINER. SINK TRIM - TWO HANDLE MIXING FAUCET, BRASS CONSTRUCTION, CHROME-PLATED FINISH, GOOSENECK RIGID SPOUT, NOMINAL 8" REACH, LAMINAR FLOW OUTLET, LEVER BLADE 4" WRISTBLADE HANDLES AT 8" CENTERS, 1/4-TURN OPERATION CERAMIC DISC CARTRIDGE. MAXIMUM FLOW TO BE 2.2 GPM IN COMPLIANCE WITH ENERGY POLICY ACT OF 2005 AND ASME/ANSI STANDARD A112.18.1M. FAUCET SHALL COMPLY WITH FEDERAL ACT 5.3874, PROVIDE RESTRICTIVE DEVICE AND ESCUTCHEON PLATE AS REQUIRED. ACCESSORIES - OFFSET 1-1/2" 17 GAUGE CHROME-PLATED BRASS TAILPIECE AND P-TRAP, QUARTER-TURN BALL VALVE TYPE 3/8" CHROME-PLATED BRASS ANGLE SUPPLIES WITH LOOSE KEY STOPS, CHROME-PLATED SOFT COPPER SUPPLY LINES.	SINK - ELKAY (LRADLKAD18), JUST (SL-ADA/J-ADA-35), FRANKIE (ALBS) SINK TRIM - CHICAGO FAUCET (786), AMERICAN STANDARD (7230.000), MOEN (8225), SPEAKMAN (SC-3000 SERIES), ZURN (Z831-XL)
SK-4	SINK - ACCESSIBLE, SELF-RIMMING SINGLE COMPARTMENT WITH FAUCET DECK AND OVERFLOW, 18 GAUGE TYPE 304 STAINLESS STEEL, 17" (SIDE-TO-SIDE) x 16" (FRONT-TO-BACK) OVERALL SIZE, 14" x 10" x 6" DEEP BOWL, COMPLETELY UNDERCOATED, 3-1/2" DIAMETER DRAIN OUTLET LOCATION OFF-CENTERED REAR IN BOWL, PERFORATED TYPE 304 STAINLESS STEEL GRID STRAINER. SINK TRIM - TWO HANDLE MIXING FAUCET, BRASS CONSTRUCTION, CHROME-PLATED FINISH, GOOSENECK RIGID SPOUT, NOMINAL 8" REACH, LAMINAR FLOW OUTLET, LEVER BLADE 4" WRISTBLADE HANDLES AT 8" CENTERS, 1/4-TURN OPERATION CERAMIC DISC CARTRIDGE. MAXIMUM FLOW TO BE 2.2 GPM IN COMPLIANCE WITH ENERGY POLICY ACT OF 2005 AND ASME/ANSI STANDARD A112.18.1M. FAUCET SHALL COMPLY WITH FEDERAL ACT 5.3874, PROVIDE RESTRICTIVE DEVICE AND ESCUTCHEON PLATE AS REQUIRED. ACCESSORIES - OFFSET 1-1/2" 17 GAUGE CHROME-PLATED BRASS TAILPIECE AND P-TRAP, QUARTER-TURN BALL VALVE TYPE 3/8" CHROME-PLATED BRASS ANGLE SUPPLIES WITH LOOSE KEY STOPS, CHROME-PLATED SOFT COPPER SUPPLY LINES.	SINK - ELKAY (LRADLKAD18), JUST (SL-ADA/J-ADA-35), FRANKIE (ALBS) SINK TRIM - CHICAGO FAUCET (786), AMERICAN STANDARD (7230.000), MOEN (8225), SPEAKMAN (SC-3000 SERIES), ZURN (Z831-XL)

PLUMBING FIXTURE SCHEDULE

TAG NAME	DESCRIPTION	MANF. & MODEL
SK-5	SCRUB SINK - WALL MOUNTED, COMPACT DESIGN, HEAVY GAUGE TYPE 304 STAINLESS STEEL, SEAMLESS WELDED CONSTRUCTION WITH SATIN FINISH, SOUND DEADENED SLANTED BOWL WITH SLOPED BOTTOM AND BACKSPLASH, WALL HANGER, COORDINATE WITH OWNER FOR CUSTOM MODIFICATION FOR DECK MOUNTED FAUCET. FAUCET AND EMERGENCY EYE WASH - TWO HANDLE MIXING FAUCET, BRASS CONSTRUCTION, CHROME-PLATED FINISH, GOOSENECK SPOUT WITH NOMINAL 6" REACH, 1.5 GPM AERATOR, 4" WRISTBLADE HANDLES AT 8" CENTERS, 1/4-TURN OPERATION CERAMIC DISC CARTRIDGE. INDEPENDENTLY OPERATED EYEWASH CONSTRUCTED INTEGRAL WITH FAUCET. TWIN SPRAY HEADS WITH CAPS AND RETAINING CHAINS/STRAPS, BRASS SUPPLY ARMS, INTEGRAL FLOW CONTROL, FITTING, BRASS PIPING AND FITTINGS, BRASS/BRONZE STAY OPEN VALVE, SINGLE ACTION ACTIVATION BY PULL LEVER, UNIVERSAL IDENTIFICATION SIGN, MINIMUM FLOW RATE OF 2.0 GPM AT 30 PSI. ACTIVATION TIME SHALL BE 1 SECOND OR LESS. BRASS/BRONZE PIPING, FITTINGS, AND VALVES SHALL BE CHROME-PLATED OR CHEMICAL-RESISTANT POWDER COATED. MIXING VALVE - THERMOSTATIC MIXING VALVE FOR EMERGENCY EYEWASH OR COMBINATION EYEWASH/FACEWASH FIXTURE, BRONZE BODY CONSTRUCTION, COLD WATER BYPASS, OUTLET THERMOMETER, COMBINATION CHECK STOPS OR SEPARATE SUPPLY CHECK VALVES AND SHUT OFF VALVES, MOUNTING BRACKET, EYEWASH MIXING VALVE TO BE MOUNTED ABOVE CEILING IN PHARMACY. SUPPLY SHUT OFF VALVES SHALL BE LOCKED OPEN OR CONTRACTOR SHALL PROVIDE A LOCKING CABINET TO PREVENT UNAUTHORIZED CLOSURE. CABINET SHALL BE SURFACE MOUNTED 18 GAUGE STAINLESS STEEL WITH 16 GAUGE LOOKING DOOR TO ENCLOSE VALVE, INLET CHECK STOPS, OUTLET THERMOMETER. THERMOSTATIC MIXING AND PRESSURE REGULATING VALVES TO DELIVER 3 GPM OF TEMPERED WATER (60-100 DEGREE F) WITH 10 PSI PRESSURE DIFFERENTIAL. ALL COMPONENTS SHALL COMPLY WITH FEDERAL ACT 5.3874. EYEWASH SHALL COMPLY WITH ANSI Z358.1 AND ASME A112.18.1. MIXING VALVE SHALL BE ASSE 1071 LISTED AND APPROVED. ACCESSORIES - QUARTER-TURN 3/8" CHROME PLATED HEAVY BRASS ANGLE SUPPLY STOPS, CHROME PLATED SOFT COPPER SUPPLY LINES, DRAIN AND TAILPIECE, 1-1/4" 20 GAUGE CAST BRASS P-TRAP, SUPPORT CARRIER. TOP OF RIM SHALL BE AT 31" ABOVE FLOOR.	SINK - ELKAY (EWS2520) FAUCET - SPEAKMAN (SEF-1800-CA) EYEWASH MIXING VALVE - LEONARD (TA-LF), ACORN CONTROLS (ET71 SERIES), ARMSTRONG (Z358), APOLLO (34ELF), BRADLEY (S19 SERIES), HAWES (TWBS EYE), LAWLER (3115F), POWERS (ES), SPEAKMAN (TW) FLUSH VALVE - AMERICAN STANDARD (6667.161), ZURN (ZEM5600AV), SLOAN (111 ES-S), DELANY (1302), HYDROTEK (H-8000C), MOEN (8310AC16) SEAT - BEMIS (3155C), CHURCH (3155C), BENEKE (833PC), OLSONITE (95), SAME AS WATER CLOSET MANUFACTURER
WC-1	WATER CLOSET - ACCESSIBLE, FLOOR MOUNTED, ELONGATED REAR OUTLET FLUSHOMETER VALVE TYPE, WHITE VITREOUS CHINA, SIPHON JET, WATER SAVING, ELONGATED BOWL, 1-1/2" TOP SPUD, BOLT CAPS. FLUSH VALVE - EXPOSED, WALL MOUNTED SENSOR OPERATION, HARD WIRED, 1.6 GALLONS PER FLUSH, 1-1-1/2" ROUGH-IN, CHROME PLATED, 1" I.P.S., SCREWDRIVER STOP-CHECK VALVE WITH VANDAL RESISTANT CAP, HIGH BACK PRESSURE VACUUM BREAKER, ADJUSTABLE TAILPIECE, SPUD COUPLING AND FLANGE, WALL FLANGE WITH SET SCREW, MECHANICAL OVER-RIDE BUTTON, CHLORAMINE RESISTANT MATERIALS, CHROME PLATED COVER PLATE WITH TAMPER-PROOF SCREWS. TRANSFORMER AND LOW VOLTAGE WIRING. TRANSFORMER CAPABLE OF OPERATING UP TO 10 UNITS, LOW VOLTAGE WIRING FROM TRANSFORMER TO EACH FLUSH VALVE, ADA COMPLIANT, 3 YEAR WARRANTY. ELECTRICAL REQUIREMENTS - 120VAC INPUT SEAT - WHITE, EXTRA HEAVY, OPEN FRONT, INJECTION MOLDED SOLID ANTI-MICROBIAL PLASTIC, CHECK HINGE, STAINLESS STEEL OR PLATED STEEL POSTS AND NUTS. CONTRACTOR OPTION: COMBINATION WATER CLOSET/FLUSH VALVE PACKAGED SYSTEM BY AMERICAN STANDARD, KOHLER, SLOAN, OR ZURN TOP OF SEAT SHALL BE AT 16"-17" ABOVE FINISHED FLOOR IN COMPLIANCE WITH LATEST ADA STANDARDS. VERIFY EQUIPMENT REQUIREMENTS AND ROUGH-IN LOCATIONS.	WATER CLOSET - SLOAN (ST-2229), AMERICAN STANDARD (3695.001) OR EQUIVALENT FLUSH VALVE - AMERICAN STANDARD (6667.161), ZURN (ZEM5600AV), SLOAN (111 ES-S), DELANY (1302), HYDROTEK (H-8000C), MOEN (8310AC16) SEAT - BEMIS (3155C), CHURCH (3155C), BENEKE (833PC), OLSONITE (95), SAME AS WATER CLOSET MANUFACTURER
WCO-1	WALL CLEANOUT - END CAP, CAST IRON ACCESS BODY, GAS AND WATERTIGHT BRONZE OR BRASS THREADED PLUG, ROUND STAINLESS STEEL ACCESS COVER, EXTENDED MACHINE SCREW.	ZURN (Z-1441), SMITH (4422), WADE (W-8480-R8650), JOSAM (58600-CO), WATTS (CO-380-RD)
WHA-1	WATER HAMMER ARRESTER - PISTON TYPE, PRE-CHARGED WITH 60 PSIG AIR, LEAD FREE, COPPER BODY, BRASS OR HIGH HEAT POLY-PROPYLENE PISTON WITH DUAL EPDM O-RING SEALS LUBRICATED WITH FDA APPROVED SILICONE LUBRICANT. POI CERTIFIED, A.S.S.E. 1010 APPROVED FOR SEALED WALL INSTALLATION, RATED FOR 1-11FIXTURE UNITS.	WATTS (LF15M2-DR), SIOUX CHIEF (650 SERIES), MIFAB (MWH), PPP (SC SERIES), ZURN WILKINS (1250XL), JR SMITH (5201-5250), WADE (WPS-100), JOSAM (75000-S)
WHA-2	WATER HAMMER ARRESTER - PISTON TYPE, PRE-CHARGED WITH 60 PSIG AIR, LEAD FREE, COPPER BODY, BRASS OR HIGH HEAT POLY-PROPYLENE PISTON WITH DUAL EPDM O-RING SEALS LUBRICATED WITH FDA APPROVED SILICONE LUBRICANT. POI CERTIFIED, A.S.S.E. 1010 APPROVED FOR SEALED WALL INSTALLATION, RATED FOR 12-32 FIXTURE UNITS. INSTALL PER MANUFACTURER'S RECOMMENDATIONS.	WATTS (LF15M2-DR), SIOUX CHIEF (650 SERIES), MIFAB (MWH), PPP (SC SERIES), ZURN WILKINS (1250XL), JR SMITH (5201-5250), WADE (WPS-100), JOSAM (75000-S)

Revisions	
Date	Description

CONSTRUCTION DOCUMENTS


Drawing Date
07/10/2018

MAYO CLINIC HEALTH SYSTEM CENTER FOR ADVANCED MEDICINE & SURGERY BUILDING ADDITION AND ALTERATIONS

700 West Avenue South, La Crosse, WI 54601

Project No. MCHS
217050

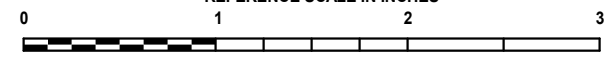
Sheet Title
PLUMBING MATERIAL LIST



1800 DEXING WAY, SUITE 200
MILWAUKEE, WI 53202
608.923.8600 FAX: 608.836.0415
www.imegcorp.com
PROJECT # 17001348.00

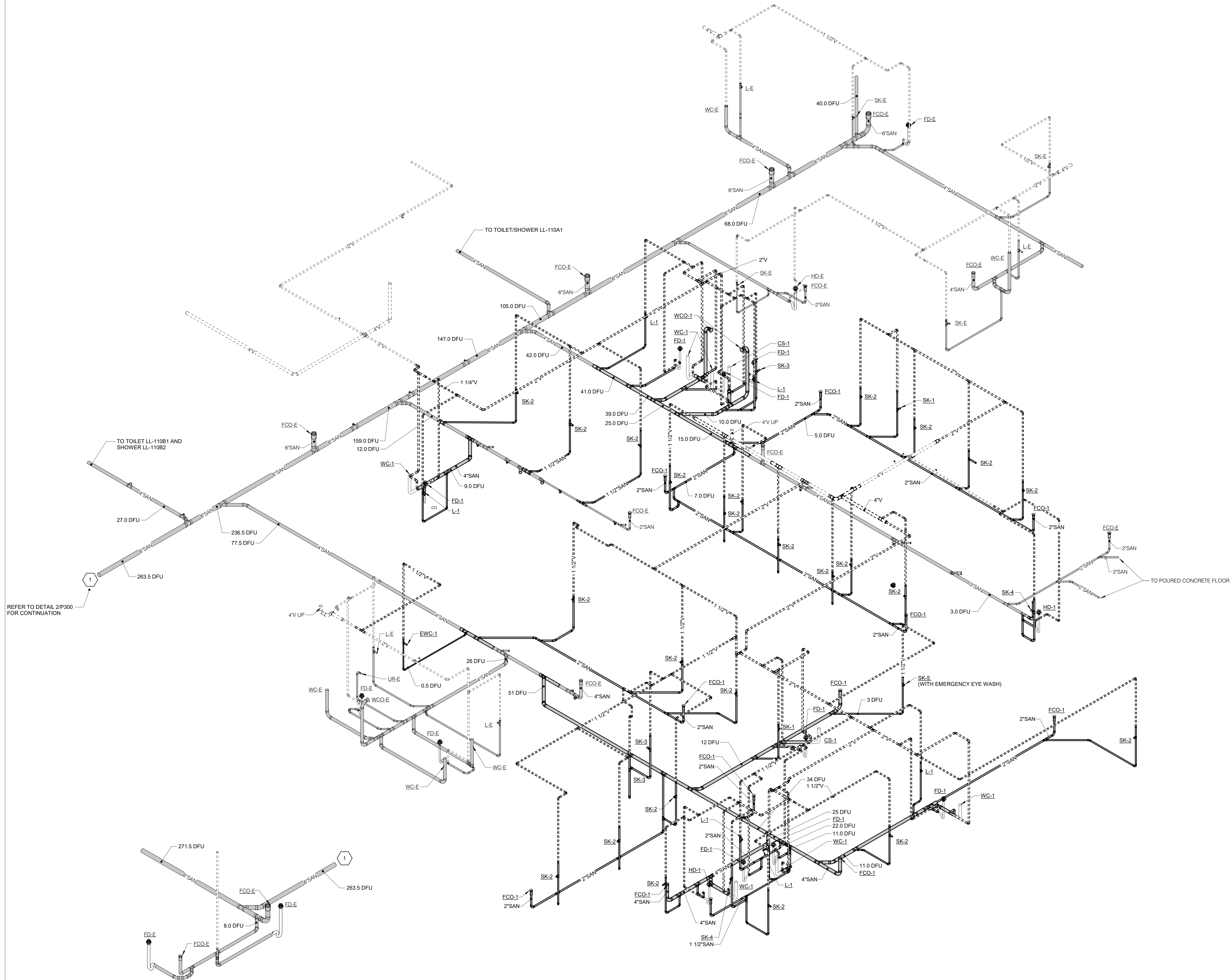
IMEG CORP RESERVES PROPRIETARY RIGHTS, INCLUDING COPYRIGHTS, TO THIS DRAWING AND THE DATA SHOWN THEREON. SAC DRAWING AND/OR DATA ARE THE EXCLUSIVE PROPERTY OF IMEG CORP AND SHALL NOT BE REPRODUCED OR REPRODUCED FOR ANY OTHER PROJECT WITHOUT THE EXPRESS WRITTEN APPROVAL AND PARTICIPATION OF IMEG CORP.

REFERENCE SCALE IN INCHES



Copyright © 2018 Kahler Slater, Inc. All rights reserved.
111 West Wisconsin Avenue, Milwaukee, Wisconsin
53203
Telephone 414.272.2000 Fax 414.272.2001
44 East Millin Street, Suite 700, Madison, Wisconsin
53703
Telephone 608.283.6300 Fax 608.283.6317

Sheet No.
P200



Revisions	
Date	Description

CONSTRUCTION
DOCUMENTS

Drawing Date
07/10/2018

MAYO CLINIC HEALTH
SYSTEM CENTER FOR
ADVANCED MEDICINE
& SURGERY BUILDING
ADDITION AND
ALTERATIONS

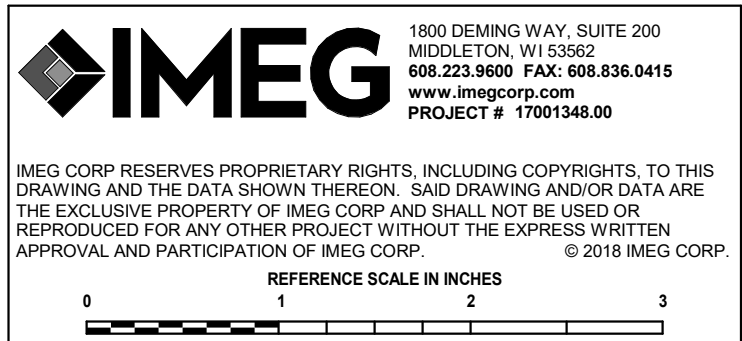
700 West Avenue South, La Crosse, WI 54601

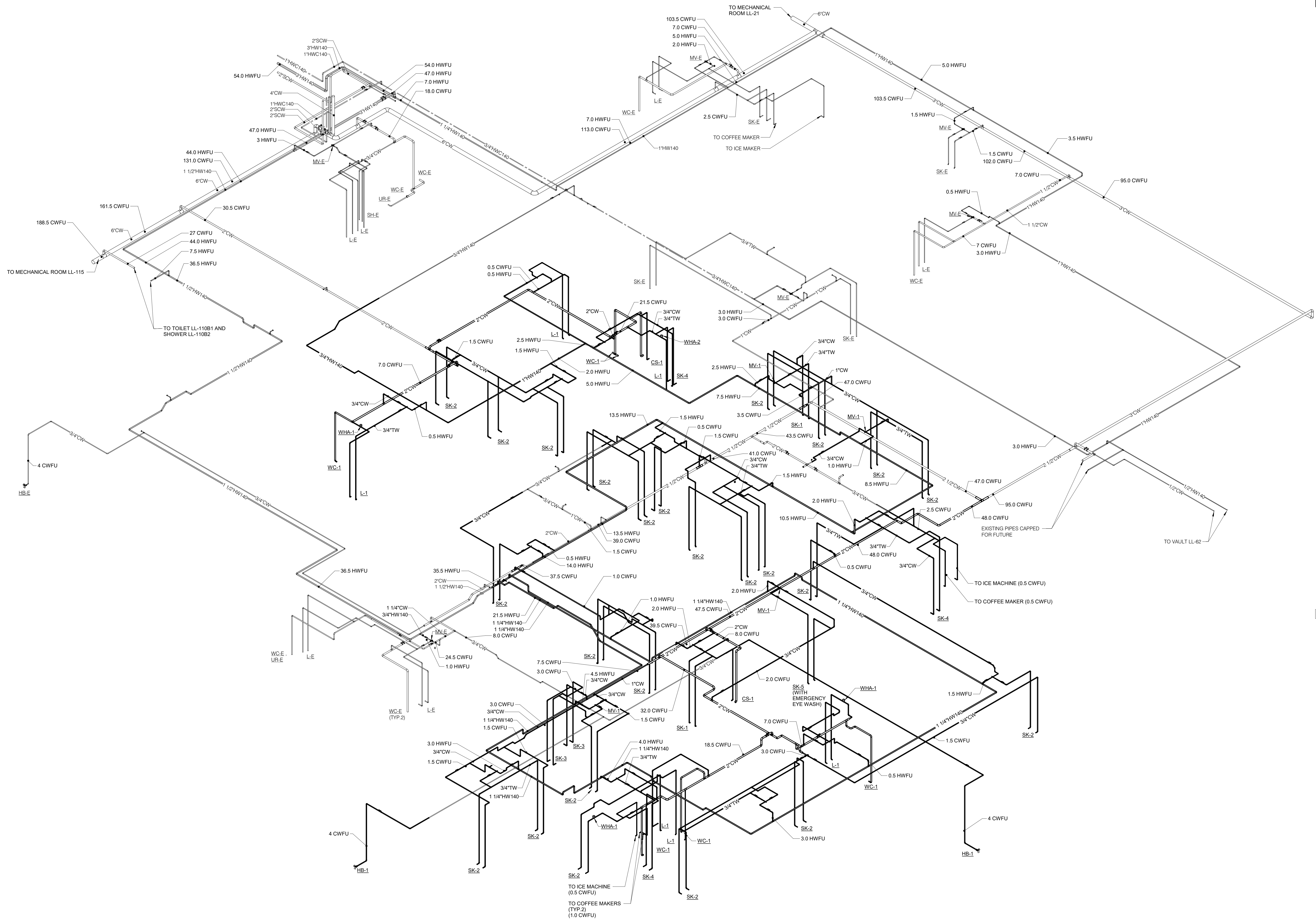
Project No. MCHS
217050

Sheet Title
SANITARY & VENT
RISER DIAGRAAM

Copyright © 2018 Kahler Slater, Inc. All rights reserved.
111 West Wisconsin Avenue, Milwaukee, Wisconsin
53203
Telephone 414.272.2000 Fax 414.272.2001
44 East Millin Street, Suite 700, Madison, Wisconsin
53703
Telephone 608.283.6300 Fax 608.283.6317

Sheet No.
P300





1 DOMESTIC RISER DIAGRAM
NO SCALE

Revisions	
Date	Description

CONSTRUCTION
DOCUMENTS

Drawing Date
07/10/2018

MAYO CLINIC HEALTH
SYSTEM CENTER FOR
ADVANCED MEDICINE
& SURGERY BUILDING
ADDITION AND
ALTERATIONS

700 West Avenue South, La Crosse, WI 54601

Project No. MCHS
217050

Sheet Title
DOMESTIC WATER
RISER DIAGRAM

Copyright © 2018 Kahler Slater, Inc. All rights reserved.
111 West Wisconsin Avenue, Milwaukee, Wisconsin
53203
Telephone 414.272.2000 Fax 414.272.2001
44 East Millin Street, Suite 700, Madison, Wisconsin
53703
Telephone 608.283.6300 Fax 608.283.6317
Sheet No.
P301

