



HSR ASSOCIATES INC.  
100 MILWAUKEE STREET  
LA CROSSE, WISCONSIN  
PHONE: 608.784.1830  
FAX: 608.782.5844  
www.hsrassociates.com

Consultant:

#### GENERAL NOTES:

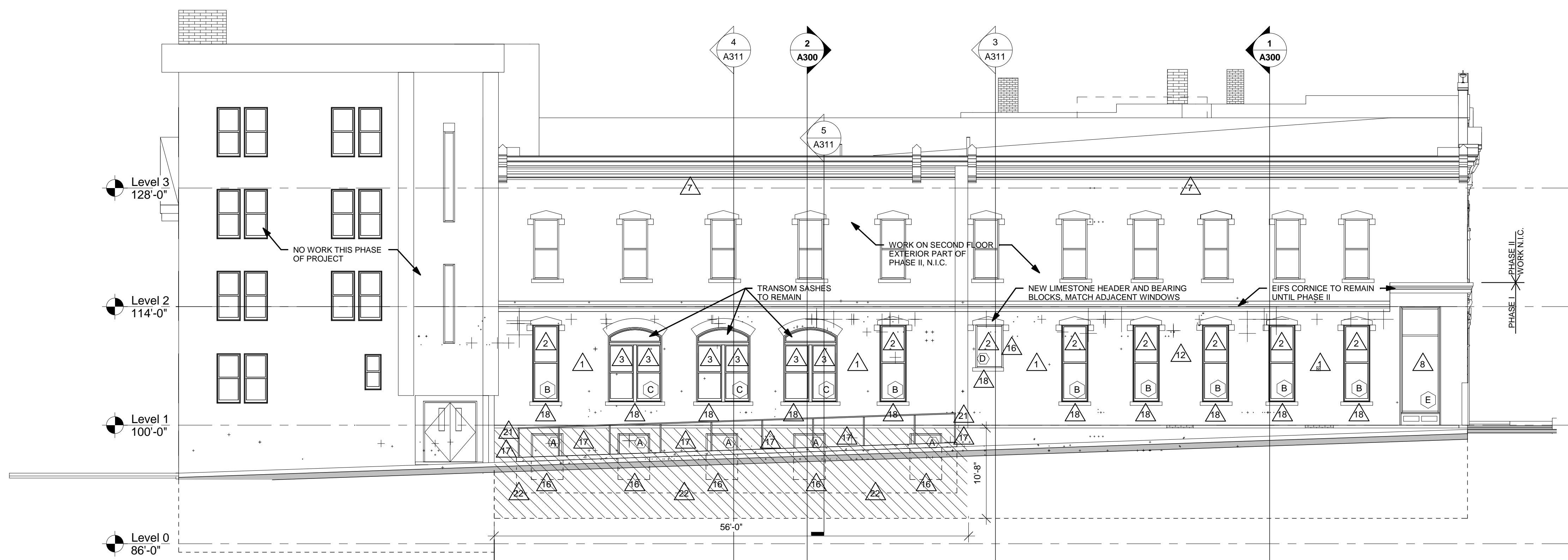
- A SEE DETAILS A500a FOR CONTROL JOINT (CJ) AND BRICK CONTROL JOINT (BCJ) INFORMATION.  
B BRICK COURSING: MATCH EXISTING.  
C SEE SPECIFICATION FOR MATERIAL TYPE.  
D VERIFY SIZE AND LOCATIONS OF ALL MECH. OPENINGS. GEN. CONTRACTOR SHALL SEAL PERIMETER OF ALL LOUVERS AND PAINT, TYP.  
E GEN. CONTRACTOR SHALL FIELD VERIFY ALL DIMENSIONS PRIOR TO BEGINNING WORK AND SHALL NOTIFY THE ARCHITECT OF DISCREPANCIES BETWEEN ACTUAL AND CALLED DIMENSIONS.  
F GEN. CONTRACTOR SHALL PROVIDE CONCRETE EQUIPMENT PADS/ CURBS AS REQ'D FOR MECH/ELEC. EQUIPMENT. VERIFY SIZE/PROFILE/LOCATION W/ MECH/ELEC.  
G GEN. CONTRACTOR SHALL INSTALL COMPRESSIBLE FILLER AT ALL MASONRY WALL CONTROL/EXPANSION JOINTS AND SEAL BOTH SIDES. WALL REINFORCING TO DISCONTINUE AT JOINTS. TYPICAL.  
H ALL EXTERIOR WALLS SHALL HAVE A 2 HOUR FIRE RATING.  
J REMOVE ALL PAINT/MASTIC FROM MASONRY IN PROJECT AREA. CLEAN MASONRY.  
K REMOVE ALL VEGETATIVE GROWTH, MISC. ANCHORS, BOLTS, FASTENERS AND SIGN REMNANTS IN PROJECT AREA - PATCH MASONRY/MORTAR.

#### LEGEND:

- KEYNOTE TAG  
WINDOW TAG, SEE SHEET A600 FOR FRAME ELEVATIONS  
THROUGH WALL CONTROL JOINT - SEE DETAILS A510  
BRICK VENEER CONTROL JOINT - SEE DETAILS A510  
BRICK TYPE 1  
BRICK TYPE 2  
LIMESTONE  
STUCCO  
SHEET METAL  
CONCRETE/CAST STONE

#### KEY NOTES ELEVATION

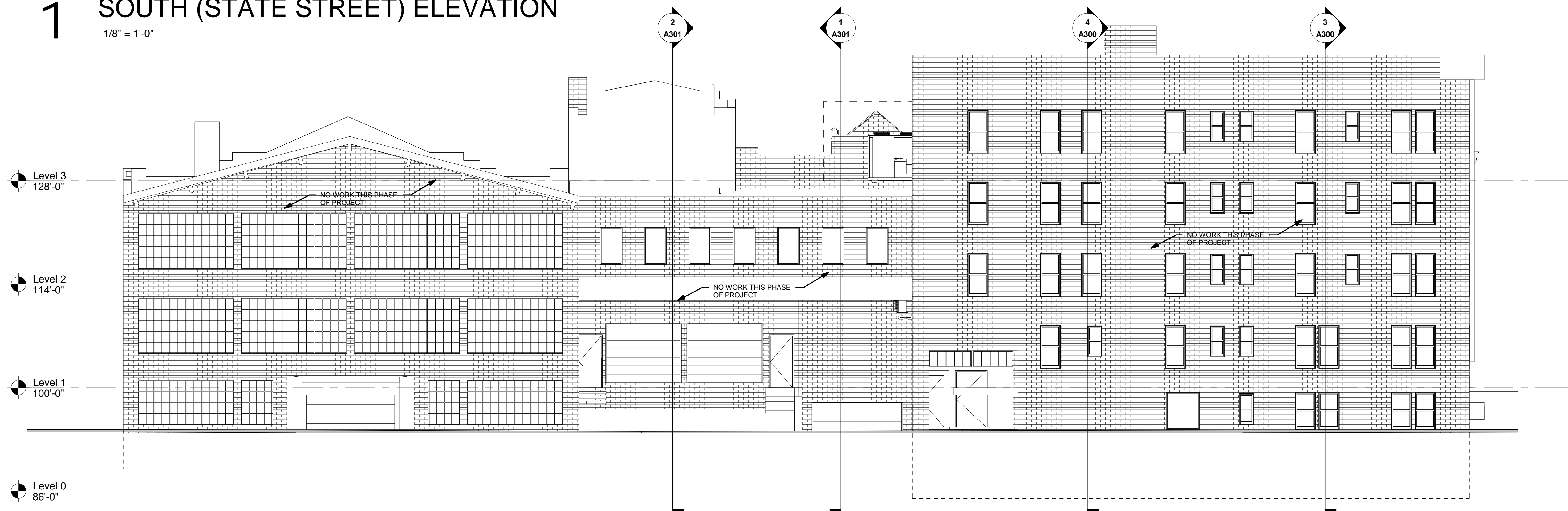
- TUCKPOINT MASONRY
- NEW METAL CLAD WOOD WINDOWS W/ ALUM. PANNING
- RESTORE EXISTING WOOD FRAME AND TRANSOM, PROVIDE NEW WOOD SASHES IN EXISTING FRAMES, PAINT
- RESTORE LIMESTONE
- NEW LIMESTONE VENEER
- NEW ALUM. STOREFRONT W/ BRICK BULKHEADS
- NEW METAL CORNICE
- NEW WOOD STOREFRONT, PAINT
- NEW SIGN BOARD
- NEW METAL PIER CAP
- NEW METAL CAPITAL ON EXISTING CAST IRON COLUMN
- REPLACE DAMAGED BRICK IN KIND
- NEW STEEL COLUMN, SEE STRUCTURAL
- RECONFIGURE SLOPED APPROACH TO ENTRY DOOR, VERIFY EXACT CONFIGURATION AND NOTIFY THE ARCHITECT WHEN LAYOUT ON FLOOR IS READY
- EXISTING IRON COLUMN, CLEAN PRIME AND PAINT
- REMOVE CMU INFILL, INSTALL NEW METAL CLAD WOOD WINDOW
- REMOVE STUCCO, REPOINT 100% OF MASONRY MORTAR JOINTS
- NEW LIMESTONE LUG SILL, USE SS PINS AND EPOXY TO ATTACH TO BACKUP MASONRY
- NEW 4" FACE BRICK VENEER, USE MATCHING SALVAGED BRICK
- NEW ALUM. GUTTER AND DOWNSPOUT
- NEW 42" HIGH METAL GUARD RAIL, MOUNT TO NEW CONCRETE CURB
- REMOVE EXISTING SIDEWALK, EXCAVATE DOWN TO BASEMENT FIN. FLOOR ELEV. INSTALL NEW CEMENTITIOUS PARGE COAT, DAMPROOFING, DRAINAGE MAT AND 2" RIGID INSULATION, BACK FILL W/ GRANULAR FILL



## 1 SOUTH (STATE STREET) ELEVATION

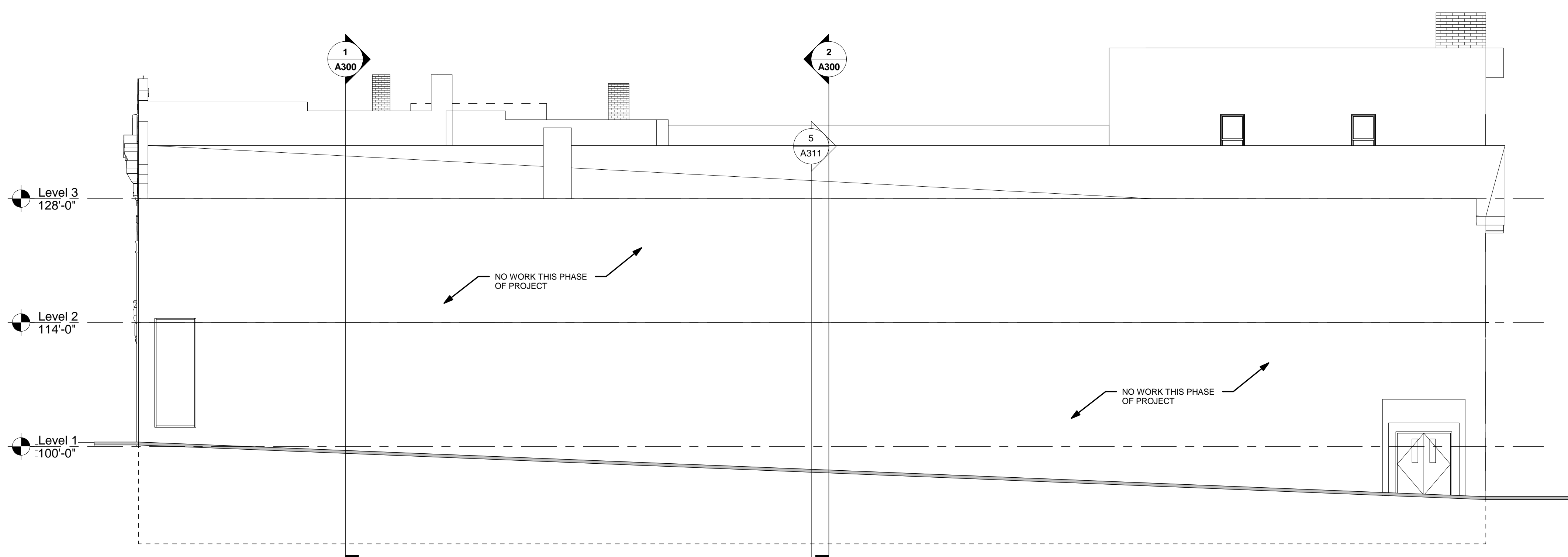
1/8" = 1'-0"

4  
5  
6  
9  
10  
11  
13  
14  
15  
18  
19  
20



## 2 WEST (ALLEY) ELEVATION

1/8" = 1'-0"



## 3 NORTH ELEVATION

1/8" = 1'-0"

GUNDERSEN HEALTH SYSTEM  
DOWNTOWN DENTAL RENOVATION  
AND EXTERIOR RESTORATION  
Project Location: 201-215 Third Street North  
La Crosse, Wisconsin 54601  
Sheet Title: EXTERIOR ELEVATIONS

Project Title:

HSR Project Number:  
18032

Project Date:  
DECEMBER 7, 2018

Drawn By:  
M. ZETTLER

Key Plan:

BIDDING  
NOT FOR  
CONSTRUCTION

Revisions:		
No.	Description	Date

Graphic Scale:  
0' 2' 4' 8' 12'

Last Update:  
10/22/2018 10:55:57 AM

A201