

## **Refuse and Recycling**

**2018**

City provided refuse and recycling services are for taxable, residential properties only. A City serviced dwelling is defined as a taxable parcel that has eight or fewer bedrooms. Residential parcels with more than eight bedrooms are considered commercial properties and are responsible for contracting privately for refuse and recycling services. Commercial, industrial, retail, institutional, and other tax exempt properties are also non-city serviced and have to contract privately for service.

The City of La Crosse Refuse & Recycling Department uses a single stream recycling system that was implemented in 2014 using automated collection carts. Harter's Quick Clean-Up provides this residential garbage and recycling collection service under a contract that runs through December 31, 2027.

Automated collection cart service consists of durable carts with lids and wheels that are designed and constructed to be dumped by a collection truck with mechanical arms, enabling the driver to remain in the vehicle. On the day of collection, residents wheel their carts to the point of collection and, after collection, return them to their storage location. The automated carts streamlined the collection process and significantly improved the appearance of neighborhoods.

Single stream recycling places all recyclable materials in one cart for collection. Currently the list of items includes virtually all papers, newsprint, pressed paper, glossy paper, corrugated cardboard, wax boxes, glass, tin, aluminum, wire, pots, pans, other metals and plastics numbered: one, two, four, and five. Changes to the list of recyclables are made by the Board of Public Works with the updates posted to the City's web page.

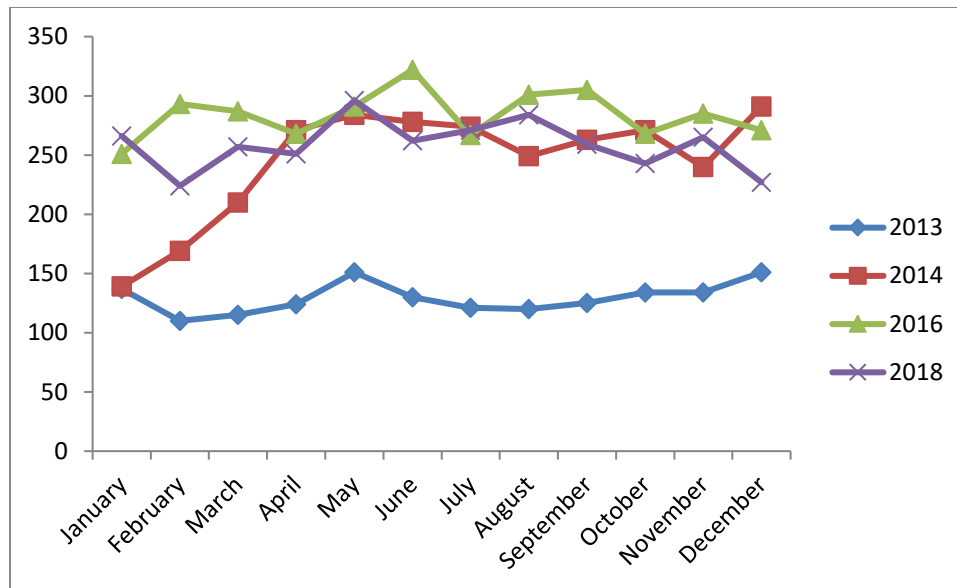
During the initial rollout residents were given the option of selecting the cart size that best fit their individual needs and lifestyle. Now residents can exchange carts for a fee, or if moving into a newly built home, are able to select their size of refuse (95, 65, 35 gal) & recycling cart (95 or 65 gal) at no cost.

Implementation of automated collection also includes an optional service for the handicapped, elderly, or medically disabled (HEMD service). With verification from a medical provider, a city serviced dwelling can have the City's collection contractor wheel the carts from their storage location to the point of collection, and then return them after they are dumped. The City pays the contractor an extra fee for each of the current 72 households on the HEMD list.

Single stream recycling resulted in a 100% increase in the volume of material recycled in 2018 compared to 2013. This increase also resulted in a reduction of the volume of refuse that goes either to XCEL Energy's Refuse Derived Fuel (RDF) plant, where it is burned to generate electricity, or to the La Crosse County Landfill, for burial. Every ton of refuse that is recycled versus burned at the RDF plant, or buried at the land fill, reduces the City's cost of solid waste services by \$62 a ton. Recycling is more sustainable than the RDF plant or the landfill.

The table below provides an overview of the number of tons of material recycled with single stream recycling in 2014, 2016 and 2018 compared to the dual stream recycling system in 2013.

	<u>2013</u>	<u>2014</u>	<u>2016</u>	<u>2018</u>
<b>January</b>	137	139	251	266
<b>February</b>	110	169	293	224
<b>March</b>	115	210	287	257
<b>April</b>	124	271	268	251
<b>May</b>	151	284	291	296
<b>June</b>	130	278	322	262
<b>July</b>	121	274	267	271
<b>August</b>	120	249	301	284
<b>September</b>	125	263	305	259
<b>October</b>	134	271	268	243
<b>November</b>	134	240	285	265
<b>December</b>	151	291	271	227
<b>Total</b>	1552	2939	3409	3105
<b>% Increase</b>		89%	120%	100%



The City of La Crosse continues to operate the brush and yard waste drop-off site on Isle La Plume at 2000 Marco Drive. The site is generally open mid-March through the end of November. Residents can dispose of grass clippings, brush, tree trimmings, and leaves. Hours of operation are posted on the City's website.

Residential collection of yard waste is provided by a subscription service through the City's refuse & recycling contractor. Residents contact Harter's Quick Clean-Up directly to subscribe and arrange payment based on the frequency they select for this seasonal service. Harter's will then deliver an automated cart that is specific to yard waste.

Disposal of large items and appliances is entirely the responsibility of the property owner. Residents have several disposal options. If they wish to have the item(s) picked up from their residence they can contact Harter's Quick Clean-Up or any other contractor to arrange pick-up. Harter's rates are posted on the City's website. Residents can also haul the item(s) themselves to Goodwill, the Salvation Army, or the County Landfill. Any fees for disposal are the responsibility of the resident.