

# LCC Signage Discussion

ISG

Project Name: La Crosse Center Expansion & Renovation  
ISG Project Number: 19990  
Date: 12/23/19

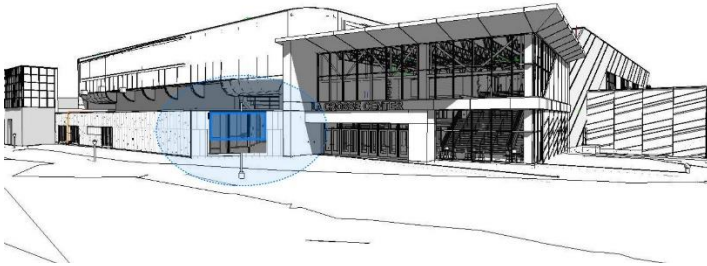
---

## MEETING FOCUS

- Discuss LCC Signage options with James from La Crosse Signage

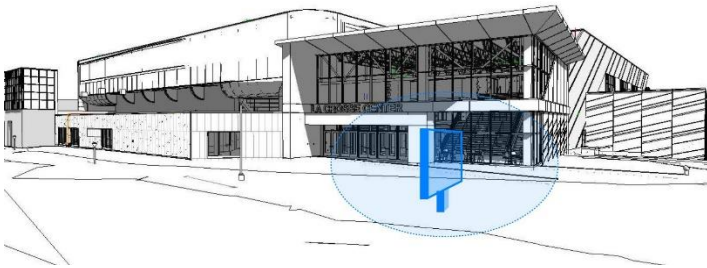
### Option 1: Signage at angled wall

- Installed inside, behind clear glass. Mounted 7' aff; 5'x10' sign



### Option 2: Outdoor Plaza Signage

- Variance needed –3' high base; 5'-4"x 9'-11" sign



### Option 3: Street Furniture Signage – see [here](#)

- Along 2<sup>nd</sup> Street – Could potentially be installed inside or outside. James to provide sizing

