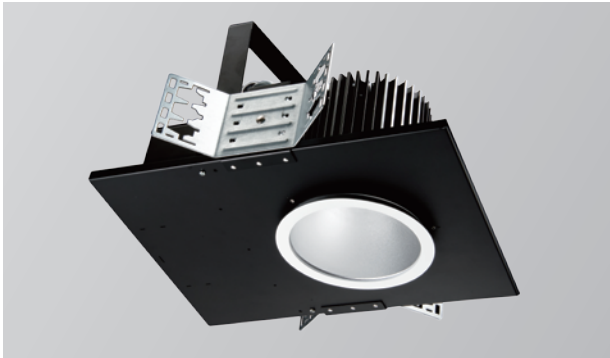


ADVANCED HIGH CEILING

6" REV - New Construction**METEOR**

6-inch aperture high lumen recessed downlight with lumen output 3470 – 10450lm for new and retrofit applications.

- Tunable White

(Please refer to Tunable White Version spec sheet)



Quantity		Type	
Project		Note	

Electrical System

- 3990lm (40W)
- 6490lm (60W)
- 8040lm (80W)
- 10450lm (100W)
- Power Input: 120V or 277V
- Operating Temperature: -40°F~112°F
- Surge Protection: 4KV
- Emergency Pack with Mounting Plate: Bodine BSL20LV

LED Technology

- 2700K, 3000K, 3500K, 4000K, 5000K
- 75 CRI, 85 CRI, 93 CRI
- Beam Angle: 40°, 60°, 100° (with diffuser)
- Rated Life > 60,000 hours (L70)

Advanced Dimming

(Proprietary VX Driver is incorporated to all dimming options for video flicker-free lighting)

- **Standard 0-10V** dims to 10%
- **Superior 0-10V:** dim to 1 %
- **DMX:** high resolution dims to 0.1%
(Supports ANSI E1.20 RDM protocol)
- **TRIAC:** Line-voltage phase control, dims to 1% (**120V only**)
- **ECOsystm:** LUTRON Hi Lume ECOsystem, dims to 1 % (**UNV only**)

New Construction

- Non-IC Rated, insulation must be kept > 1ft from housing.
- Aperture: 6.3" (160mm)
- Oversize Trim: 7.2" (183mm)
- Ceiling Cutout: 6.7" (170mm)
- Maximum Ceiling Thickness: 2" (50.8mm)
- Light engine, optics, and driver(s) accessible from below ceiling
- Weight: 13.22 lbs

***Note: C-Channel / Mounting Channels / T-Bar Hangers are purchased from a third party.**

Warranty

- 5 years limited warranty.

Listing

- ETL Listed
- FCC



6" REV - New Construction**How To Specify:****Ordering Example: RS6N-80-308-120-SPV-40-BLK****4-5 weeks lead time on over 75% of specifications.**

Model	Wattage	CCT / CRI	Voltage	Dimming
RS6N				
RS6N REV 6 inch with New Construction frame	40 40W 60 60W 80 80W 100 100W	278 2700K / CRI85 308 3000K / CRI85 358 3500K / CRI85 408 4000K / CRI85 507 5000K / CRI75 279 2700K / CRI93 309 3000K / CRI93 359 3500K / CRI93	120 120V 277 277V	NOD Non-Dimming STV Standard 0-10V dims to 10% SPV Superior 0-10V dims to 1% DMX DMX dims to 0.1% (XLR Sockets) DMX(RJ45) DMX dims to 0.1% (RJ45 Sockets) TRC* TRIAC dims to 1% (120V ONLY) ECO LUTRON ECOSystem dims to 1% (UNV ONLY)

*Option not available for 100W.

Beam Angle	Finish	Accessories
40 40° 60 60° WD* 100° (with diffuser)	BLK Black WHT White	SPD¹ Surge Protector EMP Remote Emergency Pack DF² Diffuser SCA610 Sloped Ceiling Adapter 8°-12° SCA615 Sloped Ceiling Adapter 13°-17° SCA620 Sloped Ceiling Adapter 18°-22° SCA625 Sloped Ceiling Adapter 23°-27°

*Please factor in change in lumen output with diffuser (-20% with DF)

¹ Surge protector for up to 10KV. Applicable for unstable mains or facilities using high power machineries.

² Please factor in change in lumen output with diffuser (-20% with DF).

ADVANCED HIGH CEILING
6” REV - New Construction



Delivered Lumens*

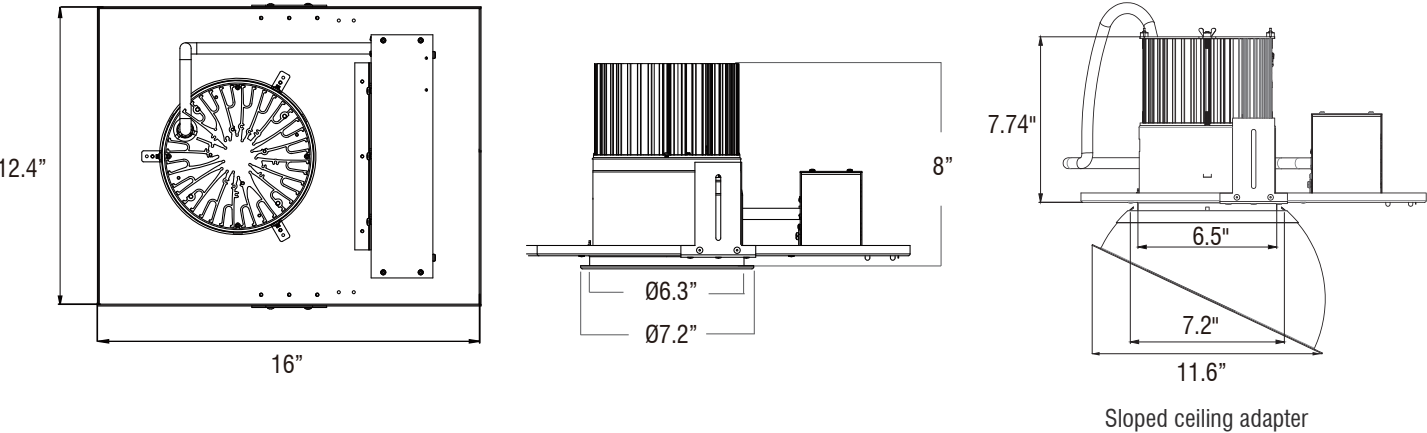
Wattage	40W	60W	80W	100W
CCT	Beam Angle: 40°			
5000K	3990 lm	6490 lm	8040 lm	10450 lm
4000K	3895 lm	6180 lm	7845 lm	9250 lm
3500K	3710 lm	5890 lm	7620 lm	9130 lm
3000K	3640 lm	5780 lm	7195 lm	8900 lm
2700K	3470 lm	5500 lm	6725 lm	8210 lm

*Tolerance ± 8%

Current Consumption

Wattage	Volt	120V	277V
40W		0.37A	0.16A
60W		0.55A	0.24A
80W		0.73A	0.32A
100W		0.92A	0.40A

Dimensions



Sloped ceiling adapter

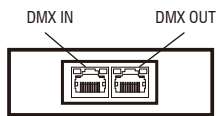
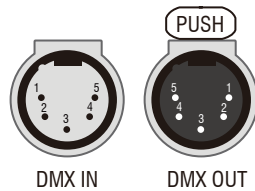
6" REV - New Construction**DMX Requirements**

The 6" REV LED fixture with DMX is a **ONE CHANNEL DMX unit**.

When placing order, please indicate DMX address. (The DMX address will be listed on the back of the fixture.)

The LED fixture provide RJ45 Socket or XLR socket to connect. (DMX cable NOT included.)

The final fixture should be terminated by the use of DMX Terminator (by others).

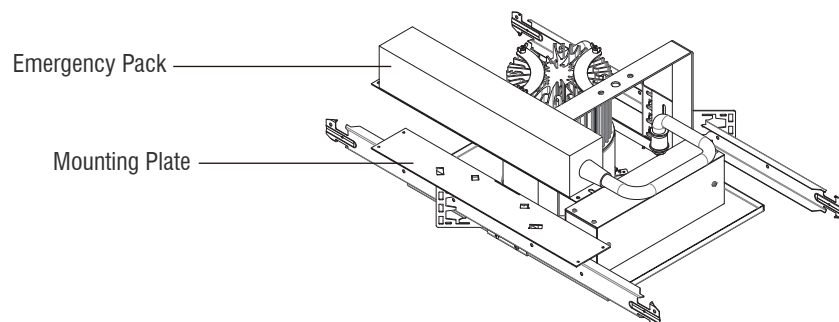
RJ45 SocketsXLR Sockets

CONNECTION	RJ45 (CAT5e)	5-PIN XLR
Common	WHITE/BROWN(PIN7) & BROWN(PIN 8)	PIN 1
Signal -	ORANGE(PIN 2)	PIN 2
Signal +	WHITE/ORANGE(PIN 1)	PIN 3
Spare	-	PIN 4
Spare	-	PIN 5

Compatible TRIAC Dimmer List

LUTRON PART NO.

RRD-6NA-	RRT-G5NEW-	RRT-GH	HQRD-10ND-	HQRT-GH	HQRD-HN	PD-10NXD-
RRD-6ND	RRT-G25LW-	HQRD-6NA-	MRF2-6ND-120-	HQRT-G25LW-	GT-250M-	PD-5NE-
RRD-10ND-	RRD-HN	HQRD-6ND-	MRF2S-6ND-120-	HQRT-G5NEW-	GTJ-250M-	

Mounting Plate for Emergency Pack**Emergency Pack Lumen Output Table**

CCT	2700K	3000K	4000K	5000K
Lumen	1640 lm	1760 lm	1890 lm	1950 lm