



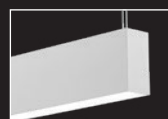
flush lens



pop-down lens



wall to ceiling
companion



suspended
companion

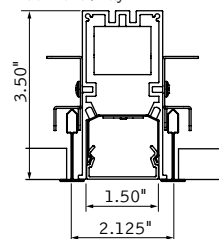


wall mount
companion

DIMENSIONAL DATA

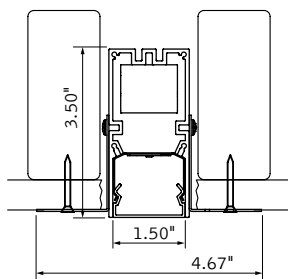
9/16" Grid

Flush lens / lay-in

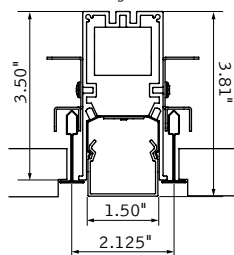


Trimless mud-in

Flush lens

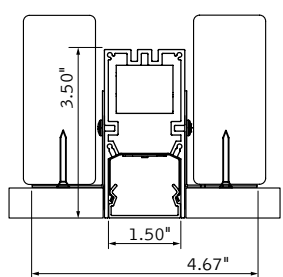


Flush lens / tegular



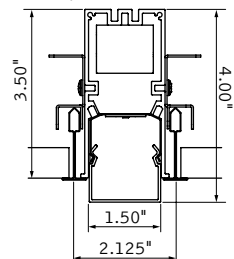
Hard surface/wood

Flush lens



Note: 0.375" min - 1.625" max ceiling thickness
Consult factory for thicker ceilings.

0.5" Pop-Down lens



Note: 15/16" tee spacing 2.50" on center

FEATURES

Narrow extruded aluminum 1.5" recessed linear slot LED.

Individual units and continuous runs in 1" increments.

Frosted acrylic lens provides uninterrupted illumination, without pixels or shadows.

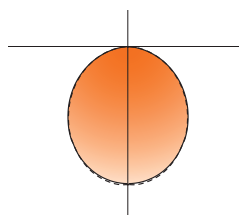
LED position and lens material optimized to provide the perfect blend of high performance and visual comfort.

Choice of output levels to meet a wide variety of application needs.

PERFORMANCE

PRODUCT OVERVIEW

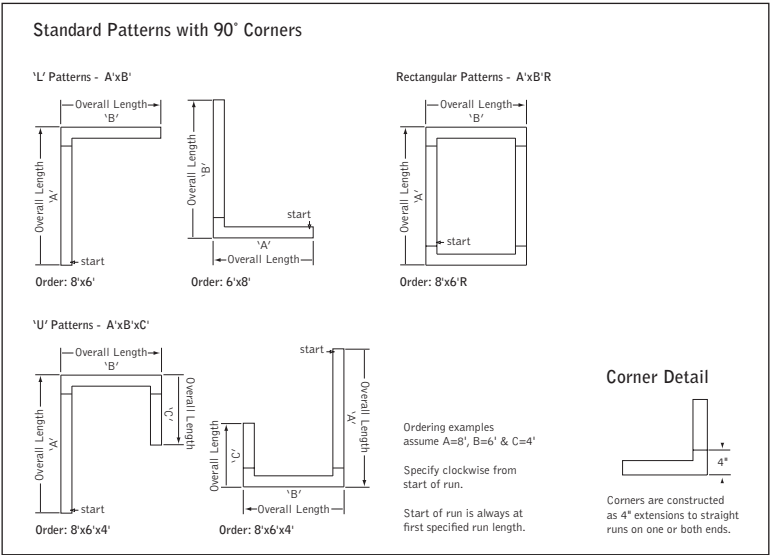
Lumen Output:	500-2500lm
Wattage:	6-24W
LPW:	75-106
SDCM:	3



4' Flush Lens
625 Lumens per foot
Delivered Lumens: 2500lm
Total System Watts: 24W

Photometric performance is measured in accordance with IESNA LM-79.
Visit focalpointlights.com for complete photometric data.

DETAILS



SPECIFICATIONS

LED System

Proprietary linear LED module incorporates premium LEDs on a robust platform to achieve excellent thermal management. LEDs are placed to promote a uniform appearance. Available in 3000K, 3500K or 4000K with both 80 and 90 CRI options. LED modules and drivers are replaceable from below. Color accuracy <3 SDCM.

Construction

One piece extruded aluminum housing. 20 Ga. steel end caps. Housing for new construction applications. XFW acceptable for use with wood, consult factory for Type IC availability. 8' unit weight: 15lbs.

Optic

Reflectors fabricated of 22 Ga. steel finished in High Reflectance White powder coat. Extruded acrylic lens .07" thick with frosted finish, up to 8' continuous.

Electrical

Luminaires are pre-wired with factory installed branch circuit wiring and over-molded quick connects. Standard 120-277V constant current driver includes 0-10V analog dimming. Power factor > .9.

Emergency Battery

Emergency output - 10 watts for 90 minutes. See EM/EC Guide for default locations and ordering details.

Labels

UL and cUL listed. Suitable for Dry or Damp Locations, indoor use only.

Finish

Polyester powder coat applied over a multi-stage pre-treatment.

Lumen Maintenance

Reported: L70 at >61,000 hours Calculated: L70 at 470,000 hours
 L90 at >61,000 hours L90 at 115,000 hours

Derived from EPA TM-21 calculator. Based on typical conditions, consult factory for additional data.

Reliability

At Focal Point, our products are designed to stand the test of time. Each luminaire is engineered using superior components, manufactured with the utmost care and rigorously tested. Contact us for reliability data.

Warranty

LED system rated for operation in ambient environments up to 25°C. 5-year limited warranty.

4' PERFORMANCE CHART

Shielding	Lumens per Foot	Delivered Lumens	Tested System Watts	LPW
Flush Lens	125LF	500	6	75
	250LF	1000	10	98
	375LF	1500	15	104
	500LF	2000	19	106
	625LF	2500	24	104

Based on 3500K, 4' lengths. Lumen Multipliers: Pop-Down Lens = 1.01, 90 CRI = 0.87
Lumen output may vary +/- 5%. Actual wattage may vary +/- 5%.

Focal Point LLC reserves the right to change specifications for product improvement without notification.

ORDERING

Luminaire Series	FSM1
Seem 1 LED	FSM1
Shielding	
Flush Lens	FL
0.5" Pop-Down Lens	PD05
(Not available with Tegular ceiling configurations)	
Lumen Output	
125 Lumens per foot	125LF
(4' minimum length. Consult factory for Lutron, DALI)	
250 Lumens per foot	250LF
(3' minimum length)	
375 Lumens per foot	375LF
500 Lumens per foot	500LF
625 Lumens per foot	625LF
Color Temperature	
3000K, 80+ CRI or 90+ CRI	30K or 930K
3500K, 80+ CRI or 90+ CRI	35K or 935K
4000K, 80+ CRI or 90+ CRI	40K or 940K
Circuit	1C
Single Circuit	1C
Voltage	
120/277 UNV Volt	UNV
347 Volt	347
(LD1 driver only)	
Control System & Dimming Level	
0-10V - 10% Dimming	LD1
0-10V - 1% Dimming	L11
Lutron Hi-Lume EcoSystem (LDE1) - 1% Dimming	LH1
Lutron 5-Series EcoSystem (LDE5) - 5% Dimming	LU5
DALI 1% Dimming	D11
Ceiling Configuration	
Std. 15/16" Lay-in	G1
Std. 15/16" Tegular	T1
Std. 9/16" Lay-in	G2
Std. 9/16" Tegular	T2
9/16" Slot-tee Tegular	G3
Tall 15/16" Lay-in	G4
Tall 15/16" Tegular	T4
Tall 9/16" Lay-in	G5
Tall 9/16" Tegular	T5
Node 9/16" Tegular	T6
Mud-in Trimless	XFF
Non-Drywall Hard Surface	XFN
Hard Surface, Wood	XFW
Factory Options	
Chicago Plenum	CP
Emergency Circuit	_EC
Emergency Battery Pack	_EM
(4' minimum length. See EM/EC Guide for default locations and ordering details.)	
6' New York City Flex Whip (120V)	FN1
6' New York City Flex Whip (277V)	FN2
6' Flex Whip	FW
Finish	WH
Matte White Housing	WH
Luminaire Length	ft in
Specify luminaire/row length in 1" increments	_ft _in
(2' minimum, lengths are nominal 1" increments based on T-centers. Housing length is 1" shorter than specified. Leave blank for patterns. Smaller increments available, consult factory.)	
Pattern Options	
(3' minimum length)	
'L' pattern	A' x B'
'U' pattern	A' x B' x C'
Rectangular pattern	A' x B' R
(Consult factory for other pattern options)	



Options in orange qualify for the Quickship program. 400' total. Refer to Quickship Guide for complete details including EM/EC options.

For more information visit focalpointlights.com/reference or consult factory.