

MEMORANDUM

August 14, 2020

To: Jack Zabrowski

Organization: City of La Crosse

From: Sonia Haeckel

Project: City of La Crosse Safe Routes to School Update

Re: Demonstration Projects

This memorandum proposes two demonstration projects as part of the City of La Crosse Safe Routes to School Update. The purpose of the projects is to demonstrate to La Crosse residents, visitors, and others how specific recommendations of the Safe Routes to School Update may be implemented.

Duration

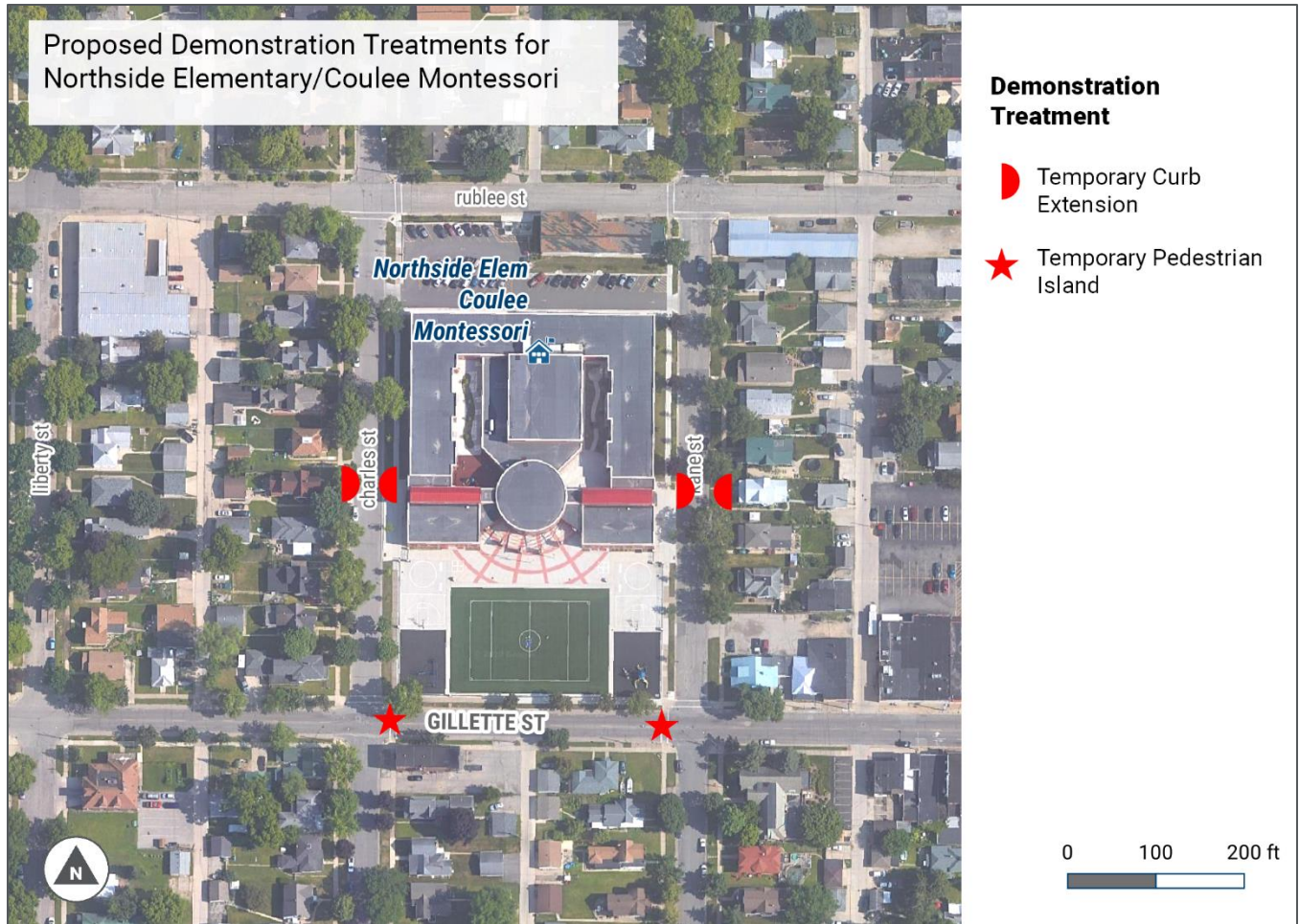
The demonstration projects were originally conceived as one to two day long events to highlight potential infrastructure changes near schools. City and/or consultant staff would have been present at each demonstration to talk to people about what the project was and gauge their interest and/or support for the project. However, the COVID-19 pandemic has made face-to-face interactions with people more challenging, and normal travel patterns, particularly around schools, have changed. Given these challenges, the demonstration projects are now proposed to last two weeks. Temporary signs will be installed with each project describing the purpose of the project and how people can provide feedback about the project.

Projects

The following are proposed as demonstration projects to highlight recommendations of the City of La Crosse Safe Routes to School Update.

Northside Elementary/Coulee Montessori

This demonstration project will provide temporary curb extensions and pedestrian islands at Northside Elementary School/Coulee Montessori (see map and table next page). Curb extensions/neckdowns will be placed on Charles Street and Kane Street on the crosswalks outside both main entrances. Pedestrian islands will be placed in Gillette Street at the intersections of Kane Street and Charles Street. Toole Design staff will lead installation of the temporary project with support from City staff. City staff will be responsible for maintaining and removing the temporary project. The materials used are described in the table following the map.



| Location | Demonstration Treatment | Barrier Material (Who Will Provide) | Other Materials |
|---|-------------------------|---|--|
| Charles Street and Kane Street, on the crosswalks outside the main entrance | Curb extensions | <ul style="list-style-type: none"> Straw waddles (Toole Design) Candlestick cones (City of La Crosse) | <ul style="list-style-type: none"> Edgeline: spray chalk Surface (Optional): Tempura paint in different colors, design to be filled in by volunteers |
| Gillette Street at Kane Street and Charles Street | Pedestrian Islands | <ul style="list-style-type: none"> Candlestick cones (City of La Crosse) | <ul style="list-style-type: none"> Edgeline: spray chalk |

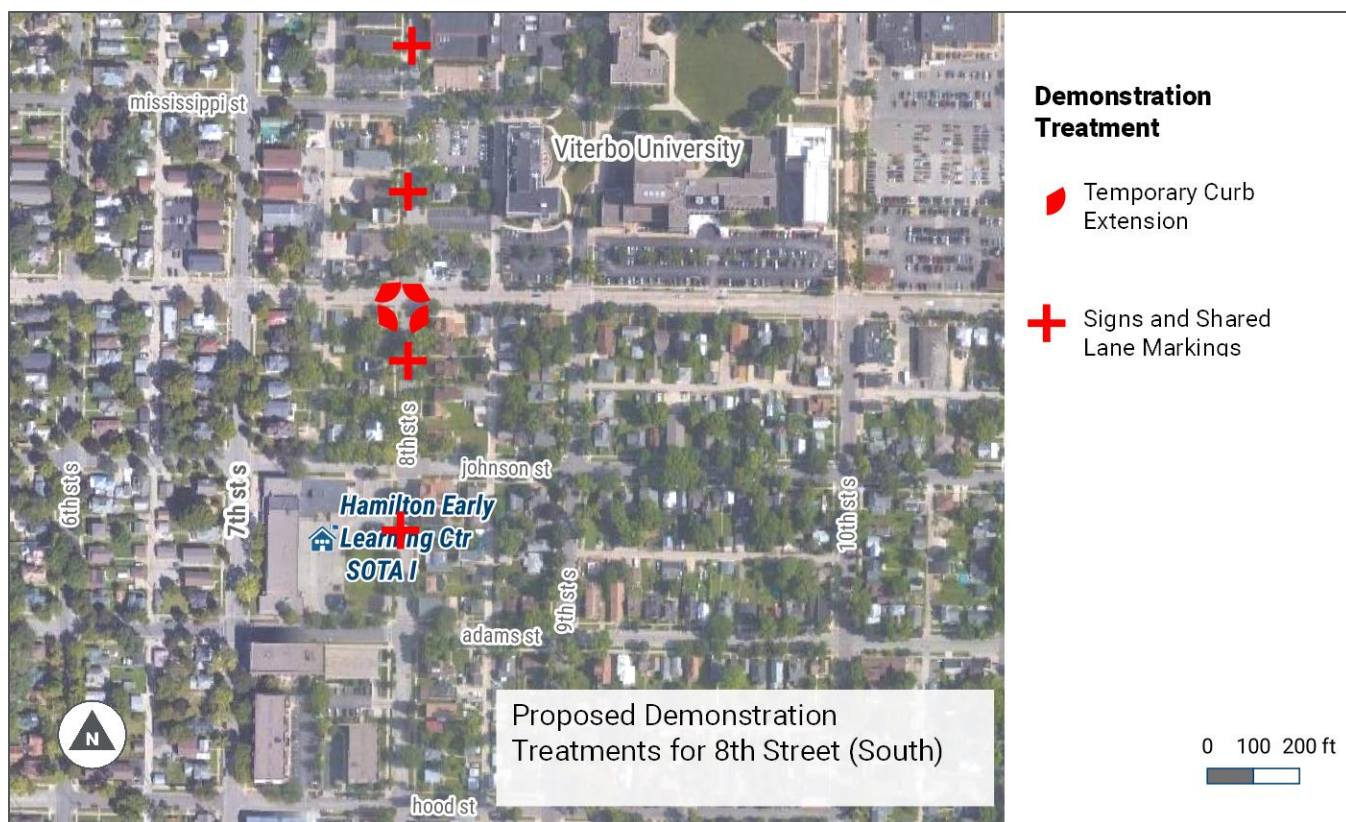
8th Street Neighborhood Greenway

This demonstration project will provide a neighborhood greenway along 8th Street South between Cass Street and Adams Street (see map and table). The neighborhood greenway will include the following features:

- Temporary shared lane markings (1 per block each direction)
- Temporary Neighborhood Greenway signs (1 per block each direction)
- Up to three traffic calming treatments “constructed” using temporary materials. We propose implementing these at the intersections of Ferry Street, Market Street, and Jackson Street.

Toole Design staff will lead installation of the temporary project with support from City staff. City staff will be responsible for maintaining and removing the temporary project. The materials used are described in the table following the map.





| Location | Demonstration Treatment | Barrier Material (Who Will Provide) | Other Materials |
|---|-------------------------|---|--|
| Each block | Shared Lane Markings | Not applicable | <ul style="list-style-type: none"> Temporary paint Sharrow stencil (City of La Crosse) |
| Each block | Signs | Not applicable | Corrugated plastic signs (Toole Design) |
| 8 th Street and Ferry Street | Curb extensions | <ul style="list-style-type: none"> Straw waddles (Toole Design) Candlestick cones (City of La Crosse) | <ul style="list-style-type: none"> Edgeline: temporary paint Surface (Optional): Tempura paint in different colors, design to be filled in by volunteers |
| 8 th Street and Market Street | Pedestrian Island | <ul style="list-style-type: none"> Candlestick cones (City of La Crosse) | <ul style="list-style-type: none"> Edgeline: temporary paint |
| 8 th Street and Jackson Street | Curb extensions | <ul style="list-style-type: none"> Straw waddles (Toole Design) Cones (City of La Crosse) | <ul style="list-style-type: none"> Edgeline: spray chalk Surface (Optional): Tempura paint in different colors, design to be filled in by volunteers |

Materials Drop Off/Delivery

Two weeks prior to the demonstration project installation, Toole Design will provide quantities needed for cones (and other potential barriers) that the City of La Crosse is to provide, as well as the intersections that the cones will be dropped off at. An example list (not final quantities) is below:

| Intersection | Materials (Quantity) |
|---|------------------------|
| 8 th Street and Ferry Street | Candlestick cones (12) |
| 8 th Street and Market Street | Candlestick cones (16) |
| 8 th Street and Jackson Street | Candlestick cones (12) |

Timing

It is our hope to have the demonstration projects in place once school returns to session. As of July 28, 2020, La Crosse schools are planning on operating virtually for at least the month of September. However, schools may remain closed in October. The latest that the demonstration projects should be taken down is October 31, 2020 due to the possibility of snowfall in late October. Therefore, there is a two-week window of opportunity to install the demonstration projects.

- Sunday, October 4 – Sunday, October 18.

Even though schools may remain closed, residents will be able to experience the demonstration projects during regular walking and bicycling trips around their neighborhoods with reasonable fall temperatures.

Maintenance

City Planning staff will check on the demonstration projects regularly to make sure that nothing has been knocked over or pushed aside. City Planning staff will also take down the materials at the end of the two week period.

Sincerely,

Sonia Haeckel | Project Planner II

TOOLE DESIGN

122 W. Washington Avenue, Suite 550 | Madison, WI 53703
shaeckel@tooledesign.com | 608.663.8082 x406