

Board of Zoning Appeals

November 16, 2020

4:00 PM

Requirements for granting a variance

- Unnecessary Hardship
- Hardship Due to Unique Property Limitations
- No Harm to Public Interests

1111 7th St. S.

- The La Crosse School District has applied for a permit to construct an addition to Hamilton School.
- Per municipal code section 115-149(d) The vision clearance of this district shall not be less than ten feet, determined by measuring ten feet each way from the corner lot at the street intersection on each street lot line.
- At this property the proposed vision clearance is 0'.
- For this project to proceed as proposed a variance of 10 feet will be required to be granted.

ARCHITECTURAL SITE PLAN FOR A PROPOSED ADDITION TO A BUILDING.

PROPOSED ADDITION
17,200 S.F.
F.F.E.=670.42

JOHNSON STREET

ADAMS STREET

7TH STREET

BENCH MARK

CONCRETE WALL

CONCRETE FLOOR

GLASSING WITH

REINFORCED CONCRETE

Hand-drawn arrow pointing to a location on the plan.

1. CONTACT DOUGLAS'S RETAIL
2. GRADE, LOW, AND LEVEL
3. ALL REQUIRED KIDNEY DIS
4. NEW LOCAL
5. NEW WEST CASE FOR ALL
6. ANY EXISTING UPDATES OF
7. OR ADVISED CHARGE ME
8. BASED ON CONTRACT
9. VERIFY THE LOCATION OF
10. ALL BUILDING
11. FROM THE START OF
12. HAVE BEEN ASSIGNED
13. COORDINATE GUARANTEED
14. PROVIDE PROPER ENGLISH
15. RECOMMEND FRIENDS OF A
16. 1. GROUNDWATER JOINTS TO
17. 2. ALL DAMAGED SHALL BE
18. 3. ALL ORIGINAL LANDSCAPE
19. 4. THE PROJECT SHEET
20. 5. RECOMMEND ROCK IN
21. 6. RELOCATION
22. 7. PLAYGROUND RELOCATION
23. 8. CONTRACTOR WITH WORK

- 1 36" CONCRETE CURB & GUT
- 2 36" CONCRETE CURB & GUT
- 3 WEDGE-CAP RAMP
- 4 PARKING LOT STRIPING
- 5 HORIZONTAL PARALLEL STOP
- 6 HORIZONTAL PARKING STOP
- 7 CONCRETE TRANSFORMER BOX CURB (SEE ANNOT.)
- 8 6" DOWN LIFT CURB/STREET LIGHT
- 9 6" DOWN LIFT CURB/STREET LIGHT
- 10 6" DOWN LIFT CURB/STREET LIGHT
- 11 6" DOWN LIFT CURB/STREET LIGHT
- 12 6" DOWN LIFT CURB/STREET LIGHT
- 13 6" DOWN LIFT CURB/STREET LIGHT
- 14 6" DOWN LIFT CURB/STREET LIGHT
- 15 6" DOWN LIFT CURB/STREET LIGHT
- 16 6" DOWN LIFT CURB/STREET LIGHT
- 17 6" DOWN LIFT CURB/STREET LIGHT
- 18 6" DOWN LIFT CURB/STREET LIGHT
- 19 6" DOWN LIFT CURB/STREET LIGHT
- 20 6" DOWN LIFT CURB/STREET LIGHT
- 21 6" DOWN LIFT CURB/STREET LIGHT
- 22 6" DOWN LIFT CURB/STREET LIGHT
- 23 6" DOWN LIFT CURB/STREET LIGHT
- 24 6" DOWN LIFT CURB/STREET LIGHT
- 25 6" DOWN LIFT CURB/STREET LIGHT
- 26 6" DOWN LIFT CURB/STREET LIGHT
- 27 6" DOWN LIFT CURB/STREET LIGHT
- 28 6" DOWN LIFT CURB/STREET LIGHT
- 29 6" DOWN LIFT CURB/STREET LIGHT
- 30 6" DOWN LIFT CURB/STREET LIGHT
- 31 6" DOWN LIFT CURB/STREET LIGHT
- 32 6" DOWN LIFT CURB/STREET LIGHT
- 33 6" DOWN LIFT CURB/STREET LIGHT
- 34 6" DOWN LIFT CURB/STREET LIGHT
- 35 6" DOWN LIFT CURB/STREET LIGHT
- 36 6" DOWN LIFT CURB/STREET LIGHT
- 37 6" DOWN LIFT CURB/STREET LIGHT
- 38 6" DOWN LIFT CURB/STREET LIGHT
- 39 6" DOWN LIFT CURB/STREET LIGHT
- 40 6" DOWN LIFT CURB/STREET LIGHT
- 41 6" DOWN LIFT CURB/STREET LIGHT
- 42 6" DOWN LIFT CURB/STREET LIGHT
- 43 6" DOWN LIFT CURB/STREET LIGHT
- 44 6" DOWN LIFT CURB/STREET LIGHT
- 45 6" DOWN LIFT CURB/STREET LIGHT
- 46 6" DOWN LIFT CURB/STREET LIGHT
- 47 6" DOWN LIFT CURB/STREET LIGHT
- 48 6" DOWN LIFT CURB/STREET LIGHT
- 49 6" DOWN LIFT CURB/STREET LIGHT
- 50 6" DOWN LIFT CURB/STREET LIGHT
- 51 6" DOWN LIFT CURB/STREET LIGHT
- 52 6" DOWN LIFT CURB/STREET LIGHT
- 53 6" DOWN LIFT CURB/STREET LIGHT
- 54 6" DOWN LIFT CURB/STREET LIGHT
- 55 6" DOWN LIFT CURB/STREET LIGHT
- 56 6" DOWN LIFT CURB/STREET LIGHT
- 57 6" DOWN LIFT CURB/STREET LIGHT
- 58 6" DOWN LIFT CURB/STREET LIGHT
- 59 6" DOWN LIFT CURB/STREET LIGHT
- 60 6" DOWN LIFT CURB/STREET LIGHT
- 61 6" DOWN LIFT CURB/STREET LIGHT
- 62 6" DOWN LIFT CURB/STREET LIGHT
- 63 6" DOWN LIFT CURB/STREET LIGHT
- 64 6" DOWN LIFT CURB/STREET LIGHT
- 65 6" DOWN LIFT CURB/STREET LIGHT
- 66 6" DOWN LIFT CURB/STREET LIGHT
- 67 6" DOWN LIFT CURB/STREET LIGHT
- 68 6" DOWN LIFT CURB/STREET LIGHT
- 69 6" DOWN LIFT CURB/STREET LIGHT
- 70 6" DOWN LIFT CURB/STREET LIGHT
- 71 6" DOWN LIFT CURB/STREET LIGHT
- 72 6" DOWN LIFT CURB/STREET LIGHT
- 73 6" DOWN LIFT CURB/STREET LIGHT
- 74 6" DOWN LIFT CURB/STREET LIGHT
- 75 6" DOWN LIFT CURB/STREET LIGHT
- 76 6" DOWN LIFT CURB/STREET LIGHT
- 77 6" DOWN LIFT CURB/STREET LIGHT
- 78 6" DOWN LIFT CURB/STREET LIGHT
- 79 6" DOWN LIFT CURB/STREET LIGHT
- 80 6" DOWN LIFT CURB/STREET LIGHT
- 81 6" DOWN LIFT CURB/STREET LIGHT
- 82 6" DOWN LIFT CURB/STREET LIGHT
- 83 6" DOWN LIFT CURB/STREET LIGHT
- 84 6" DOWN LIFT CURB/STREET LIGHT
- 85 6" DOWN LIFT CURB/STREET LIGHT
- 86 6" DOWN LIFT CURB/STREET LIGHT
- 87 6" DOWN LIFT CURB/STREET LIGHT
- 88 6" DOWN LIFT CURB/STREET LIGHT
- 89 6" DOWN LIFT CURB/STREET LIGHT
- 90 6" DOWN LIFT CURB/STREET LIGHT
- 91 6" DOWN LIFT CURB/STREET LIGHT
- 92 6" DOWN LIFT CURB/STREET LIGHT
- 93 6" DOWN LIFT CURB/STREET LIGHT
- 94 6" DOWN LIFT CURB/STREET LIGHT
- 95 6" DOWN LIFT CURB/STREET LIGHT
- 96 6" DOWN LIFT CURB/STREET LIGHT
- 97 6" DOWN LIFT CURB/STREET LIGHT
- 98 6" DOWN LIFT CURB/STREET LIGHT
- 99 6" DOWN LIFT CURB/STREET LIGHT
- 100 6" DOWN LIFT CURB/STREET LIGHT

MATCH EXISTING PAVEMENT
 CROSS SECTION
 PROPOSED 6" CONCRETE
 PAVEMENT
 PROPOSED 3.5" ASPHALTE
 CONCRETE PAVEMENT W/ 1/2"
 SUE COURSE
 6" CONCRETE DRAIN/
 CUMPTON PIG
 12" RUBBER MULCH (SEE
 REQUIREMENTS OF AISH
 FUEL AND AISH FORM)
 BRICK/PAVING/INSTALL
 CUSHION MAT IN DISTURBED
 AREAS
 OVER STUMP (SEE
 ARCHITECTURAL PLANS)

1. IF OF TOTAL DALL BE PROVIDED A SHALL REPORT THAT SPOILED PLANT
2. REPAIRS/REPLACEMENTS MAY BE MADE
3. ALL PLANT MATERIALS LISTED SHALL
4. BE MAINTAINED IN THE SAME AREA
5. GRASS/WEEDS SHALL BE MAINTAINED
6. 2' DEPTH OF GRASS/WEEDS SHALL
7. BE MAINTAINED IN THE SAME AREA
8. GRASS/WEEDS SHALL BE MAINTAINED
9. GRASS/WEEDS SHALL BE MAINTAINED

DATE	INITIALS	NAME
10	CHAS. W. HALL	WILLIAMS

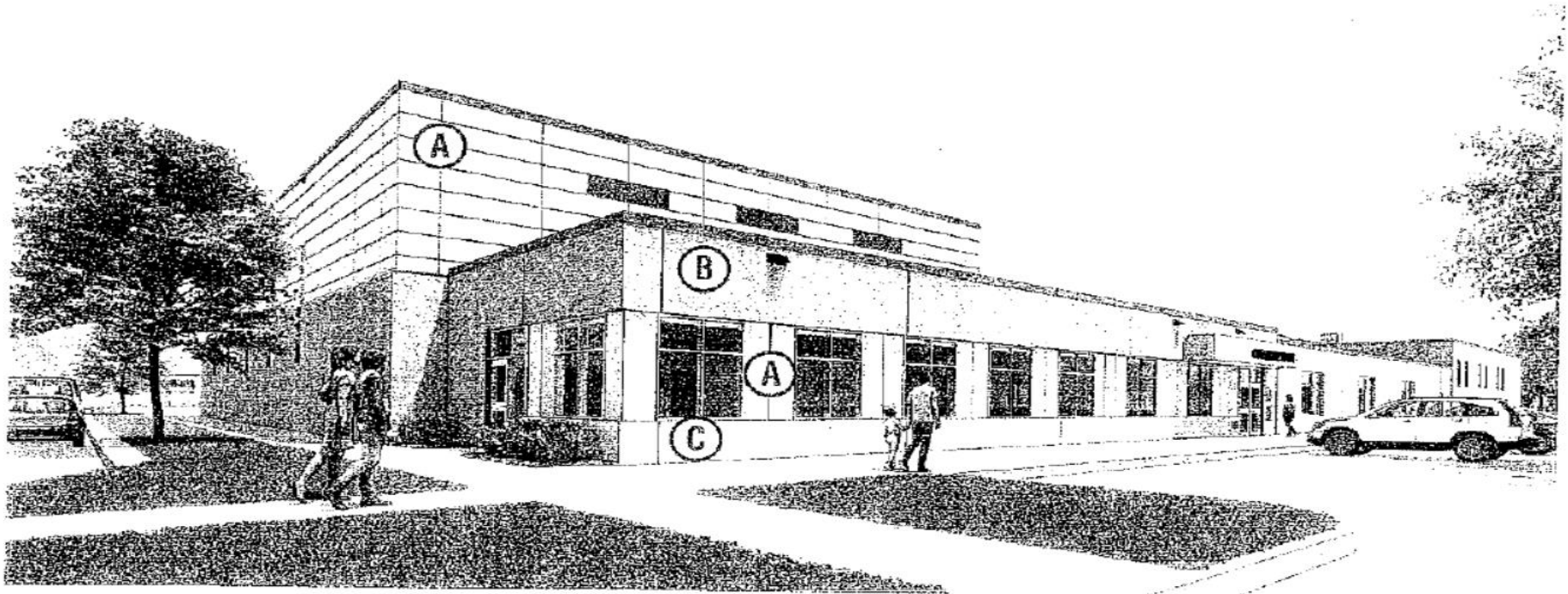
[illegible][illegible]

1111 7th St. S.

① SILVER METAL PANEL

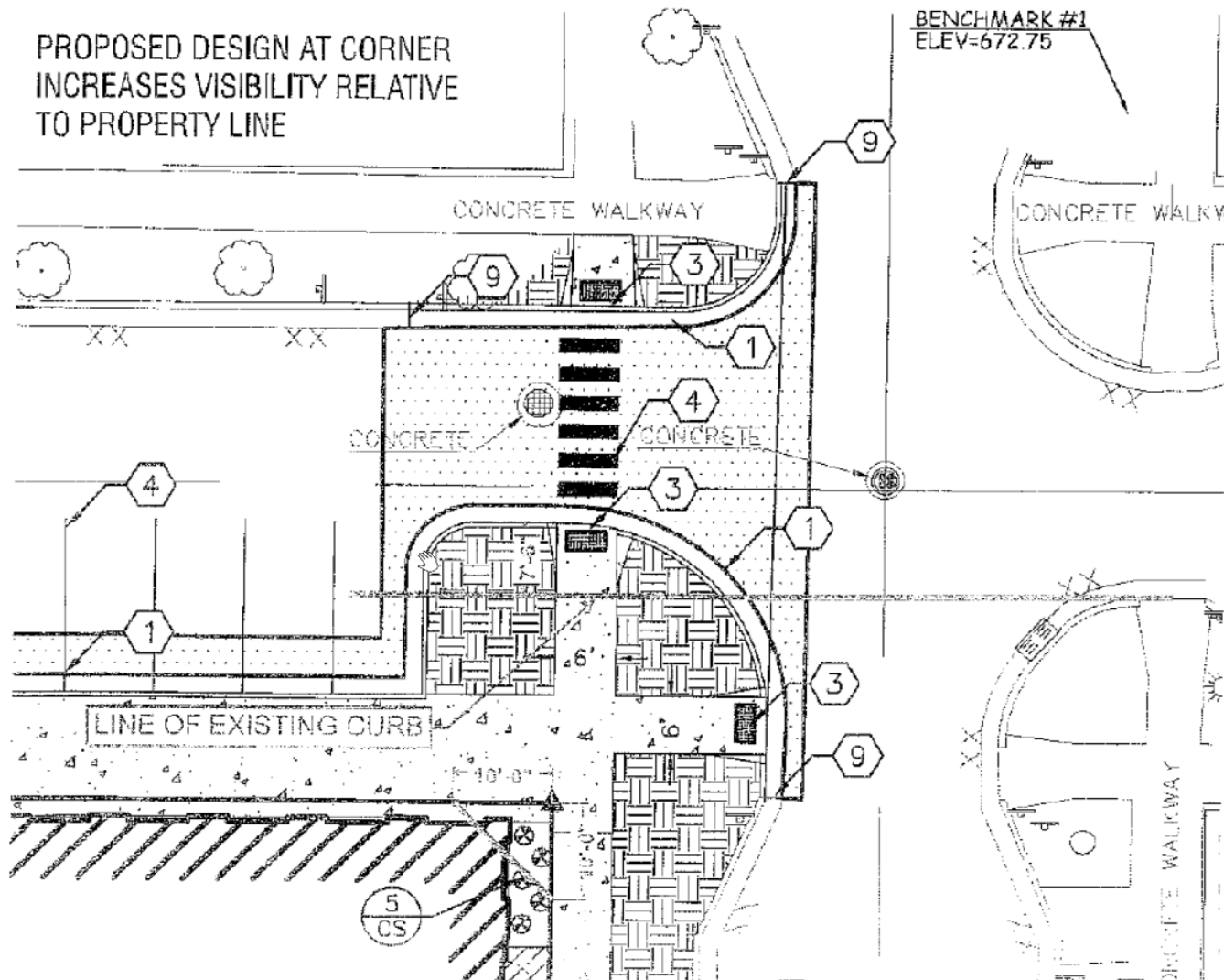
② MODULAR BRICK

③ BURNISHED BLOCK



NEW BUILDING

1111 7th St. S.



1111 7th St. S.

