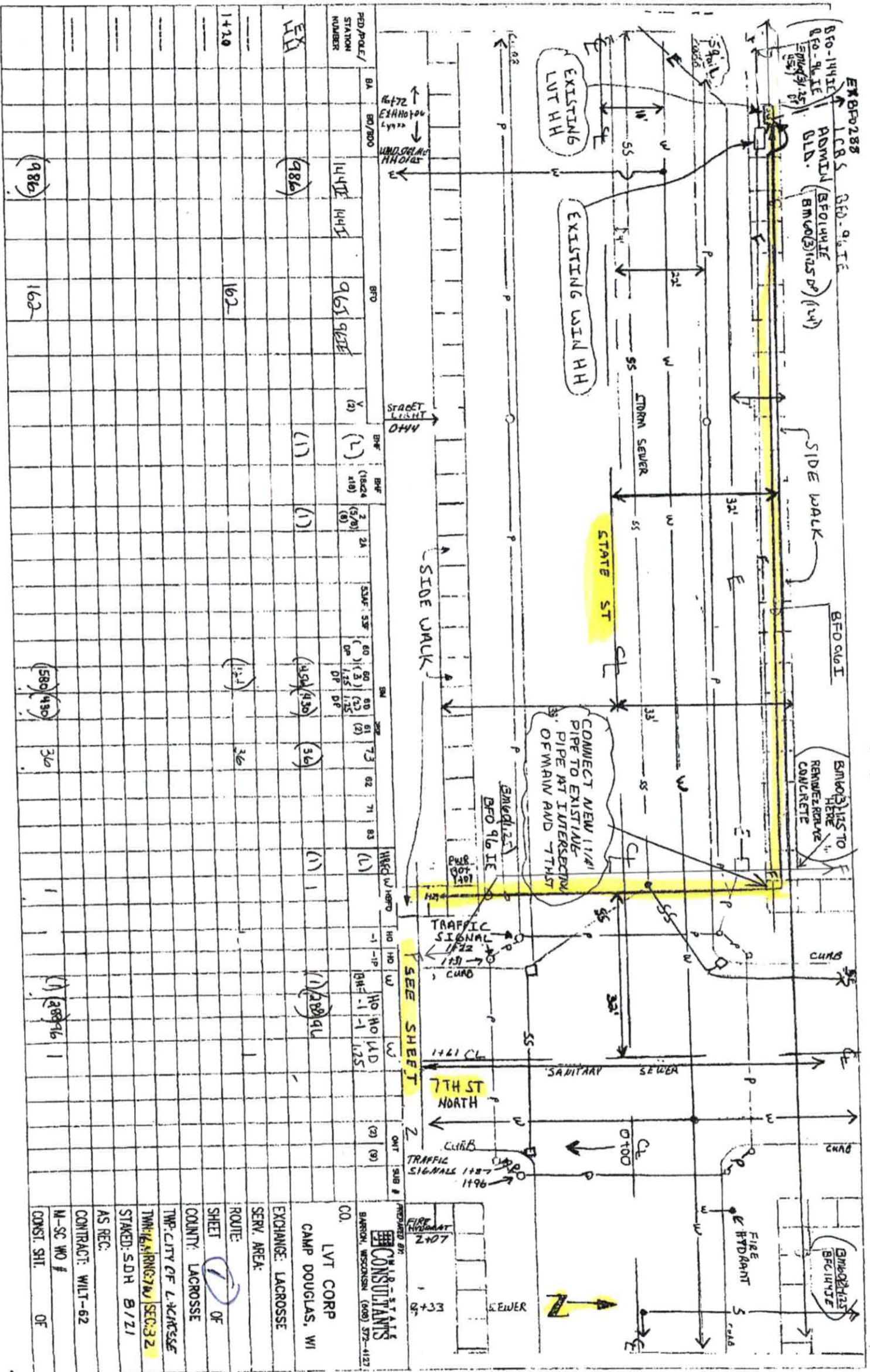


Clearance from manhole centers by 5.5' which would give a 3' clearance from outside of manhole and catch basin structures. 3.5' minimum from water valves, fire hydrants, pull boxes and light poles. Generally 3 foot clearance from outside of structure.

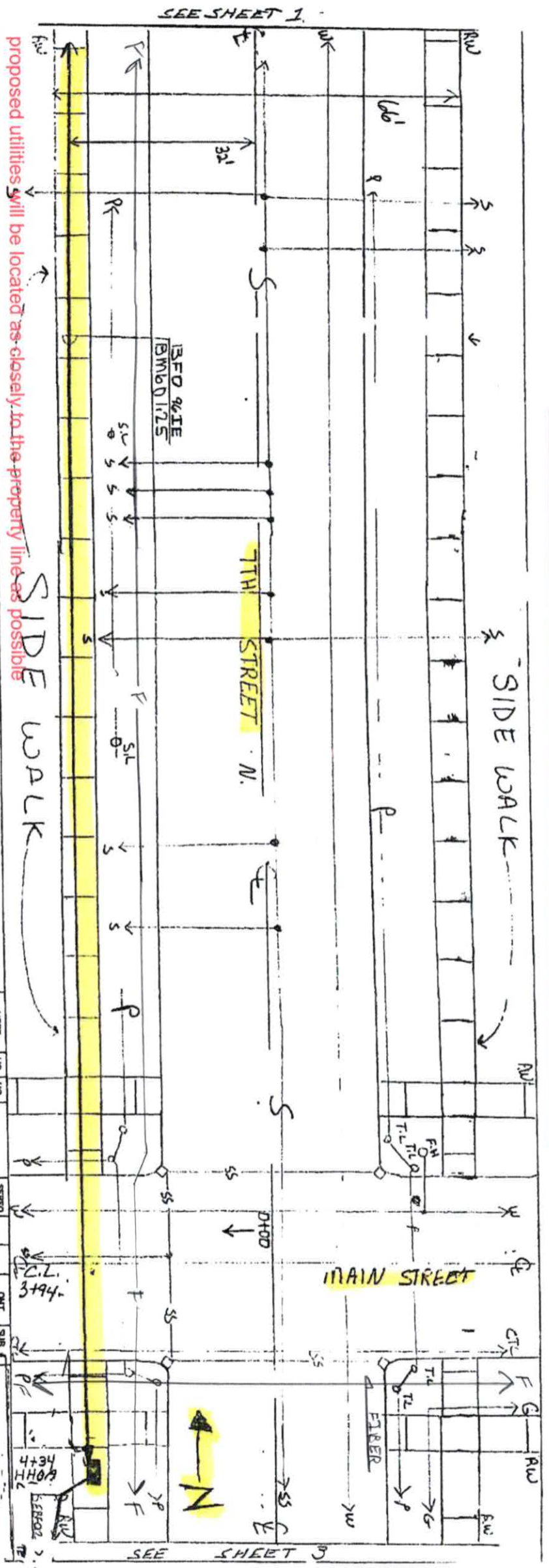


proposed utilities will be located as closely to the property line as possible

ENGINEERS  
 CONSULTANTS  
 BARON, WISCONSIN (608) 572-4127  
 CO. LVT CORP  
 CAMP DOUGLAS, WI  
 EXCHANGE: LACROSSE  
 SERV. AREA:  
 ROUTE: 1 OF  
 SHEET: 1 OF  
 COUNTY: LACROSSE  
 TWP. CITY OF LACROSSE  
 TOWN: LACROSSE  
 STAGED: SDH B/21  
 AS REC.  
 CONTRACT: WILT-62  
 M-SC NO #  
 CONST. SHI. OF



Clearance from manhole centers by 5.5' which would give a 3' clearance from outside of manhole and catch basin structures. 3.5' minimum from water valves, fire hydrants, pull boxes and light poles. Generally 3 foot clearance from outside of structure.



Proposed utilities will be located as closely to the property line as possible

POLE/ TYPON RIBS	BA	ED/BOD	BFO	V (2)	BHF (M)	BHF (1624 (9/20) (8)	2A	S3AF	S3F (60) (60) DP	B1 (60) (60) DP	61 (2)	73	62	71	63	99	H8T0 (S)	H0 ( )	H0 -1 -1P	SERFO	CMT (2)	SUB (0)	CO.			
																							EXCHANGE:	SERV. AREA:		
																								CO.	LVT CORP	
																										CAMP DOUGLAS, WI
																										EXCHANGE: LACROSSE
																										SERV. AREA:
																										ROUTE:
																										SHEET 2 OF
																										COUNTY: LACROSSE
																										TWP: CITY OF LACROSSE
																										TWP: BARRON, WISCONSIN
																										TWP: RING: 7W/SEC: 3 2
																										STAKED: SDH 10/21
																										AS REC:
																										CONTRACT: WILT-62
																										M-SC WD #
																										CONST. SHI. OF

Fiber on west side







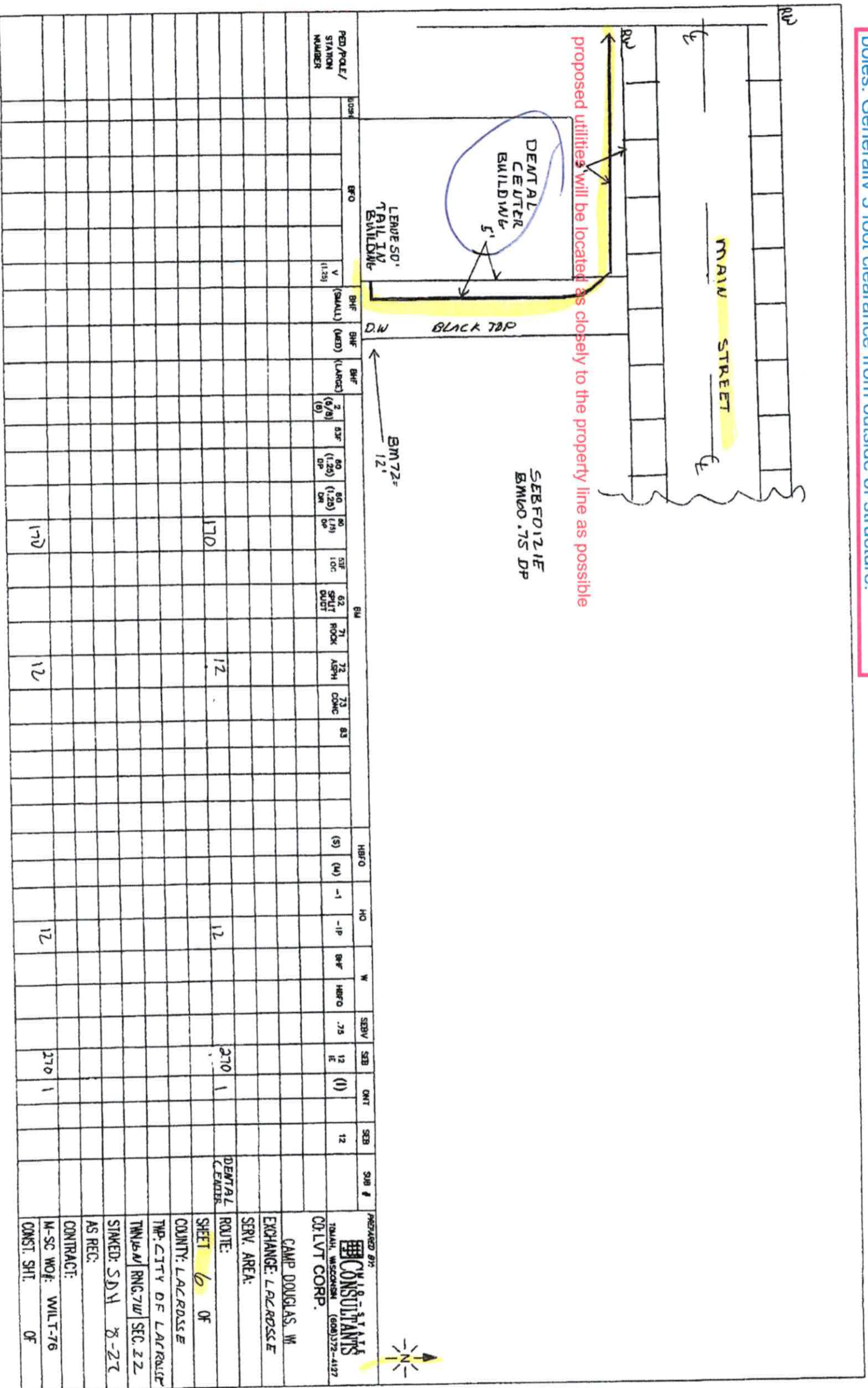








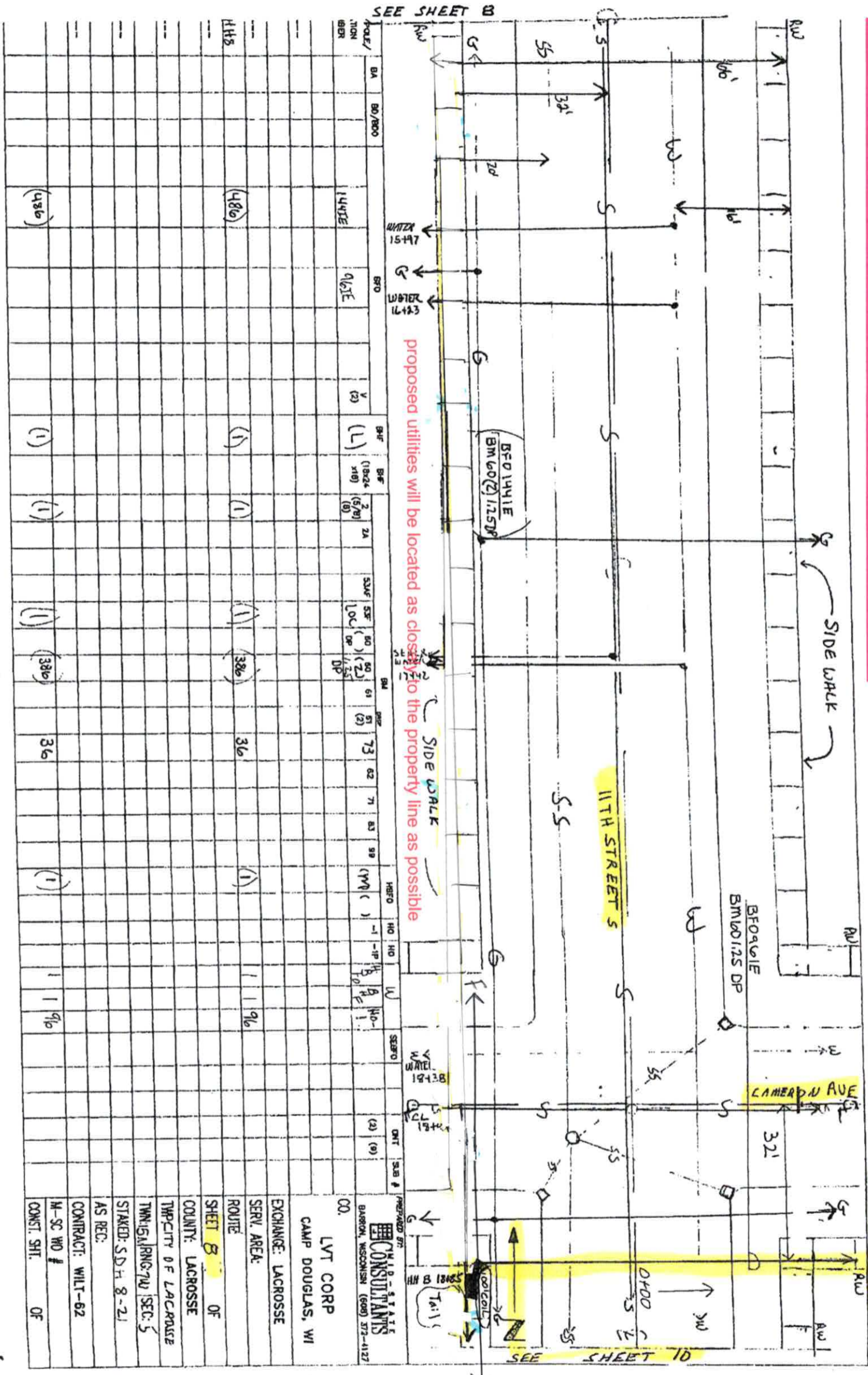
Clearance from manhole centers by 5.5' which would give a 3' minimum from water valves, fire hydrants, pull boxes and light poles. Generally 3 foot clearance from outside of structure.







Clearance from manhole centers by 5.5' which would give a 3' clearance from outside of manhole and catch basin structures. 3.5' minimum from water valves, fire hydrants, pull boxes and light poles. Generally 3 foot clearance from outside of structure.



POST/NOTION BEER	BA	BO/BOO	DATE	BY	SH#	SH#	2A	3A	5A	5B	5C	5D	5E	5F	5G	5H	5I	5J	5K	5L	5M	5N	5O	5P	5Q	5R	5S	5T	5U	5V	5W	5X	5Y	5Z
			1441E	A12E	(1)	(1)																												
			(486)		(1)	(1)																												
			(436)		(1)	(1)																												

CONSULTANTS  
 BARBON, WISCONSIN (608) 572-4127  
 CO. LVT CORP  
 CAMP DOUGLAS, WI  
 EXCHANGE: LACROSSE  
 SERV. AREA:  
 ROUTE  
 SHEET 8 OF  
 COUNTY: LACROSSE  
 TWP/CITY OF LACROSSE  
 TWP/GRADING SEC: 5  
 STAKED: SDH 8-21  
 AS REC:  
 CONTRACT: WILT-62  
 M-SC WD #  
 CONST. SHI. OF







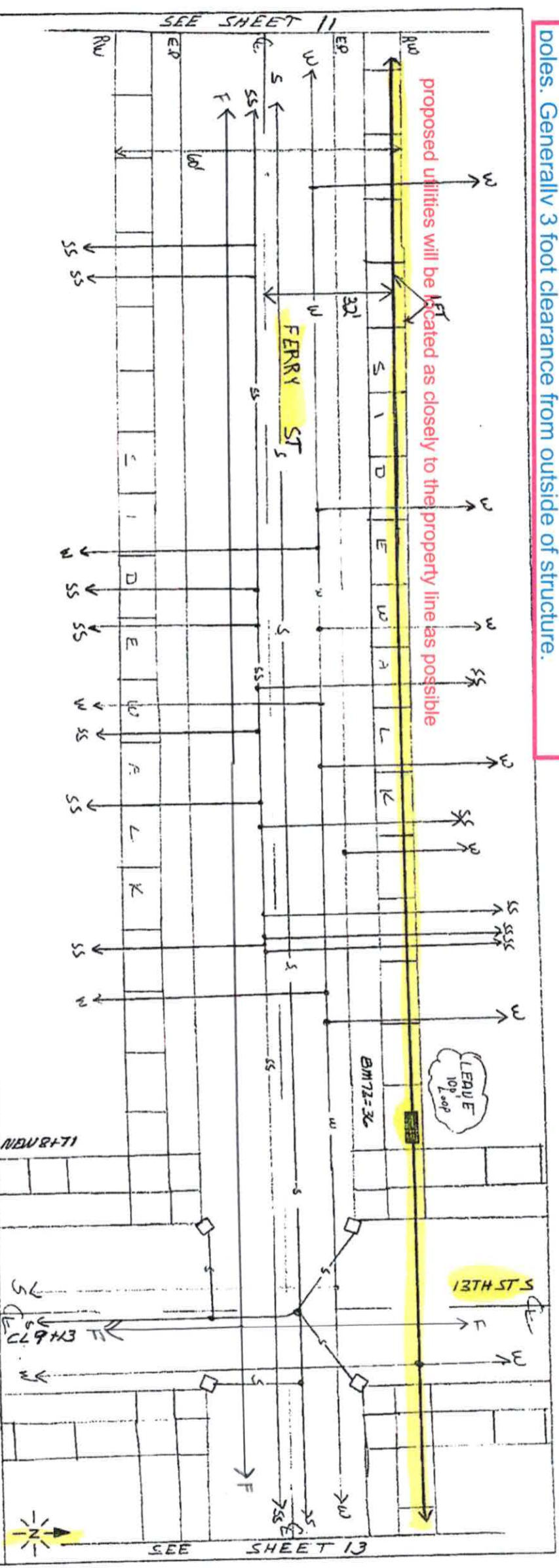








Clearance from manhole centers by 5.5' which would give a 3' clearance from outside of manhole and catch basin structures. 3.5' minimum from water valves, fire hydrants, pull boxes and light poles. Generally 3 foot clearance from outside of structure.



PED./POLE/ STATION NUMBER	MODEL	BFD			BIM			HFRD	HO	W	HFRD	SEBY	SEB	ONT	SEB	SUB #	PREPARED BY
		(SMALL)	(MED)	(LARGE)	(S)	(M)	(L)										
604	604	1	1	1	504	504	36	36	1	1	1	1	1	1	1	1	CONSULTANTS

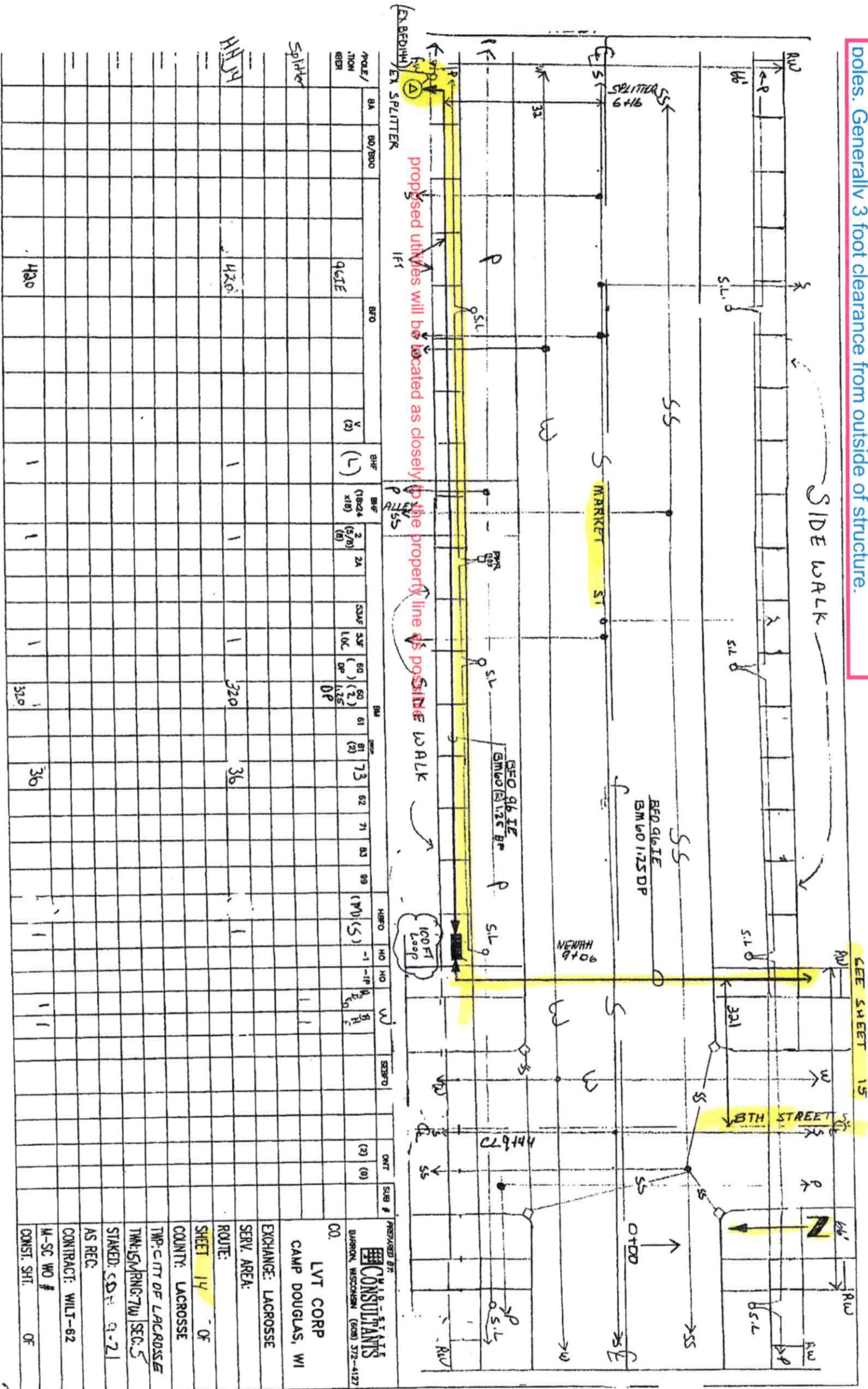
CONTRACTOR:	CAMP DOUGLAS, WI
EXCHANGE:	LACROSSE
SERV. AREA:	
ROUTE:	
SHEET:	12 OF
COUNTY:	LACROSSE
TWP:	CITY OF LACROSSE
TNS/M/RNG/IV/SEC.	5
SKED:	SDH 8-22
AS REC:	
CONTRACT:	
M-SC WOF:	WILT- 62
CONST. SHIT:	OF







Clearance from manhole centers by 5.5' which would give a 3' clearance from outside of manhole and catch basin structures. 3.5' minimum from water valves, fire hydrants, pull boxes and light poles. Generally 3 foot clearance from outside of structure.



PROJ./TION	BA	BO/BOO	BFO	V	BHF	BHF (10-24 x18)	2A	32A	32B	32C	32D	32E	32F	32G	32H	32I	32J	32K	32L	32M	32N	32O	32P	32Q	32R	32S	32T	32U	32V	32W	32X	32Y	32Z	
4200																																		
4200																																		

PREPARED BY: M.A.B. STANTIS  
 CONSULTANTS  
 BARREN, WISCONSIN (608) 372-4127  
 00. LVT CORP  
 CAMP DOUGLAS, WI  
 EXCHANGE: LACROSSE  
 SERV. AREA:  
 ROUTE:  
 SHEET 14 OF  
 COUNTY: LACROSSE  
 TWP: CITY OF LACROSSE  
 TMS: SM/RNG: 7W/SEC: 5  
 STAKED: SDH 9-21  
 AS REC.  
 CONTRACT: WILT-62  
 M-SC WO #  
 CONST. SHT. OF











