

Honor Bill
The San Jose
 No. P3268 "Already Cut" and Fitted
\$2,138⁰⁰

Can be built on a lot 33 feet wide
 24'-0"

THE SAN JOSE bungalow architecture is derived from the time when old Spain ruled our Southern Pacific Coast. It is another example of combining the beautiful Spanish mission lines, with the latest idea in a splendid floor plan. Adaptable to any section of the country, it offers every modern comfort possible in a design of this kind. There is a double saving in its sturdy "Honor Bill" construction, and our factory-to-you system. The rooms are carefully planned, providing ample space. The house-work is a pleasurable duty. The exterior is sided with stucco, the roof is shingled, and the eaves are shortened. Among the attractive features are the tower with its grilled windows, the louvre in the gables, batten shutters that serve as a decoration to the French windows, and swinging gate in the arched passageway that leads to the side entry.

The Vestibule. A French door welcomes you into the hospitable San Jose. A coat closet is at the left, another door leads to the kitchen, so that the busy housewife can greet callers without the need of going through the living room, and to the right is a plastered arch opening to the living room.

The Living Room. Floor space, 14 feet 3 inches by 17 feet 5 inches. In the center of the right wall is a mantel and fireplace, with a high sash on either side. Here, the book lover comes into his own, for next to the fireplace are book shelves. Triple French windows provide light and ventilation. Plenty of wall space for a piano, and the usual customary furniture.

The Dining Room is entered from the living room through a plastered arch wide opening. Here, a bay, with a triple window on the right wall, give this room a pleasing air. Floor space, 13 feet 5 inches by 10 feet 4 inches.

The Kitchen. To the left of the dining room is a swinging door that connects with the delightful kitchen. At your right is a built-in cupboard, and close by is space for a work table. At the left is space for a cabinet, and directly opposite is space for a range. A double window is directly above the space for sink. A door leads to the side entry, which has space for refrigerator, stairs to basement, and door to stoop.

The Bedrooms. A central hall, immediately off the dining room, connects with the two bedrooms and bathroom. Each bedroom has two windows, with cross ventilation, and a clothes closet.

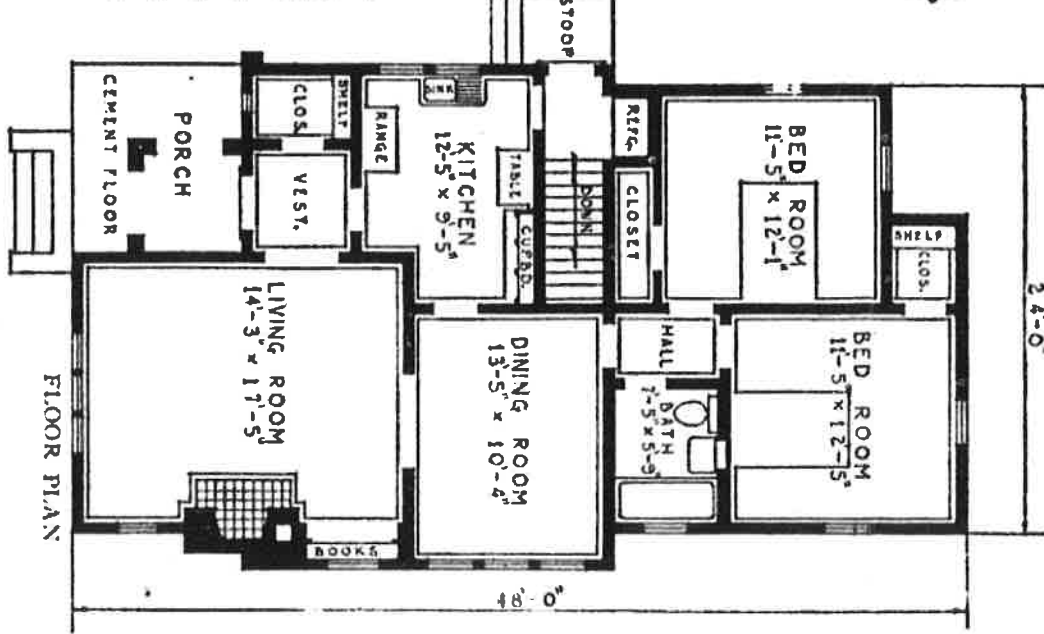
The Bathroom is laid out so that all plumbing fixtures can be roughed-in on one wall, thereby saving installation expense. It has a built-in medicine cabinet, and is lighted by a window.

The Basement. Room for heating plant, laundry and storage.

Height of Ceilings. First floor, 8 feet 6 inches from floor to ceiling. Basement, 7 feet from floor to joists.

What Our Price Includes

- At the price quoted we will furnish all material to build this five-room bungalow, consisting of:
 - Lumber; Lath;
 - Roofing, Best Grade Clear Red Cedar Shingles;
 - Framing Lumber, No. 1 Quality Douglas Fir or Pacific Coast Hemlock;
 - Flooring, 1 1/2 x 2 1/4-inch Clear Oak, Living Room, Dining Room and Vestibule; 1 1/2 x 2 1/4-inch Clear Maple, Kitchen and Bathroom; 1 1/2 x 2 1/4-inch Clear Douglas Fir or Pacific Coast Hemlock, Balance of Rooms;
 - Finishing Lumber, High Grade Millwork (see pages 104 and 105);
 - Interior Doors, Two-Cross Panel Design of White Pine With Fir Panels;
 - Trim, Back Band Style, of Beautiful Grain Yellow Pine; Windows of California Clear White Pine;
 - Medicine Case; Mantel; Book Shelves; Kitchen Cabinet;
 - Shutters;
 - Eaves Trough and Down Spout;
 - Heavy Water-Proof Building Paper;
 - Sash Weights;
 - Narcissus Design Hardware (see page 116);
 - Metal Lath;
 - Paint for Three Coats Outside Trim;
 - Shallac and Two Coats Varnish, Interior Trim and Doors;
 - Wood Filler and Two Coats of Varnish for Oak Floors;
 - Two Coats of Varnish for Maple and Douglas Fir or Pacific Coast Hemlock Floor.
- We guarantee enough material to build this house. Price does not include cement, brick, plaster or stucco. See description of "Honor Bill" Houses on pages 12 and 13.
- For prices of Plumbing, Heating, Wiring and Electric Fixtures or Shades see pages 138 and 139.



OPTIONS

Sheet Plaster and Plaster Finish to take the place of wood lath, \$123.00 extra. See page 140.

Storm Doors and Windows, \$65.00 extra.

Screen Doors and Windows, galvanized wire, \$35.00 extra.

Oriental Slate Surfaced Shingles, in place of Wood Shingles for roof, \$30.00 extra.

4-In-1 Style Oriental Asphalt Slate Surface Strip Shingles, guaranteed for 17 years, instead of Wood Shingles for roof, \$23.00 extra.

Oak Trim and Doors for Living Room and Dining Room, \$67.00 extra.

For prices of Plumbing, Heating, Wiring and Electric Fixtures or Shades see pages 138 and 139.

"Homes from Catalog"
 "Home Builders Catalog"

From: SearsArchives.com/Homes/1927-1932.htm