

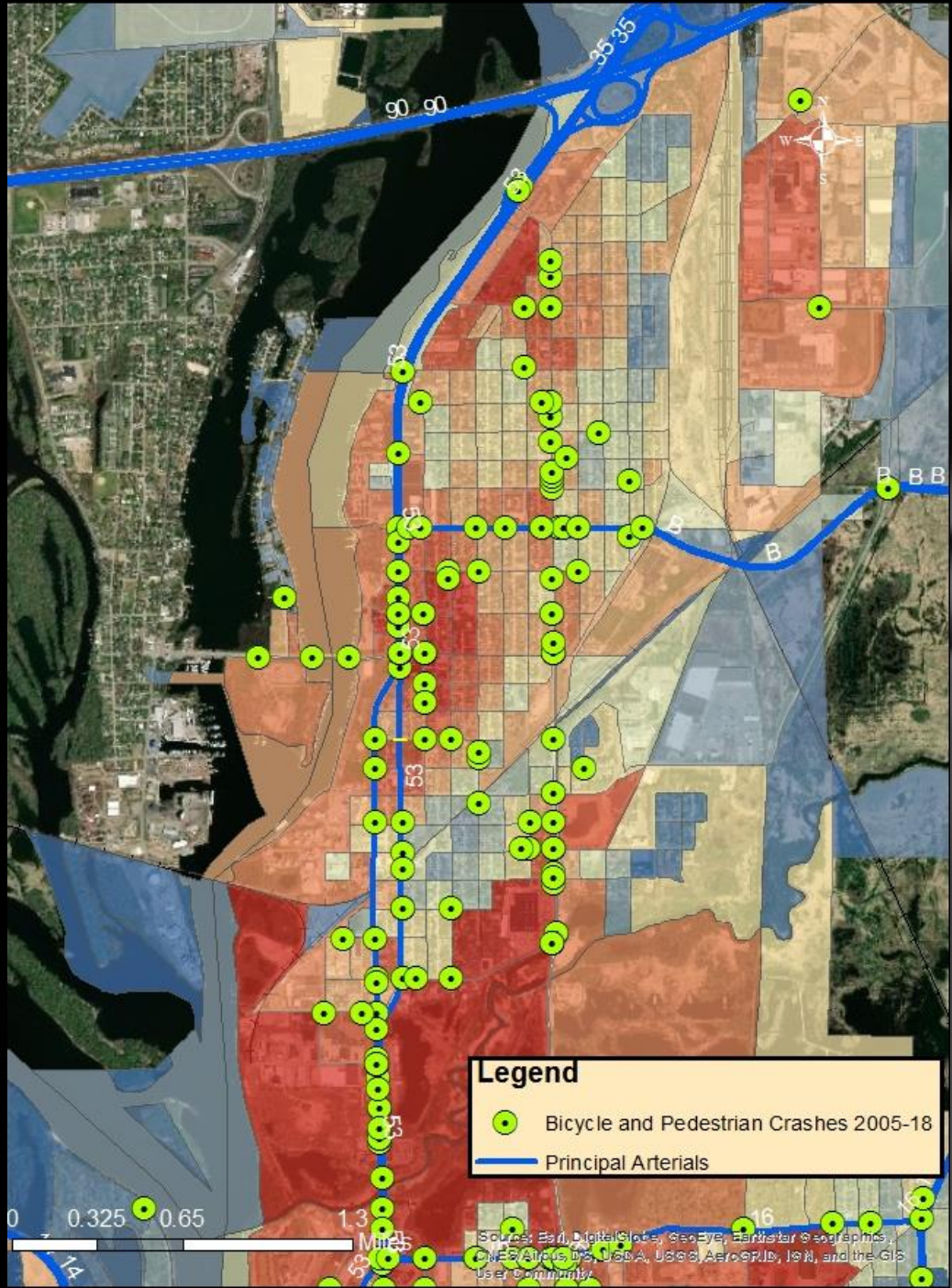
# Gillette Street Reconstruction

*By: Jamie Hassemer ~Civil Engineer I and Jack  
Zabrowski ~Associate Planner*



*City of La Crosse Engineering, Planning and  
Development Departments*

# Why Bike Lanes

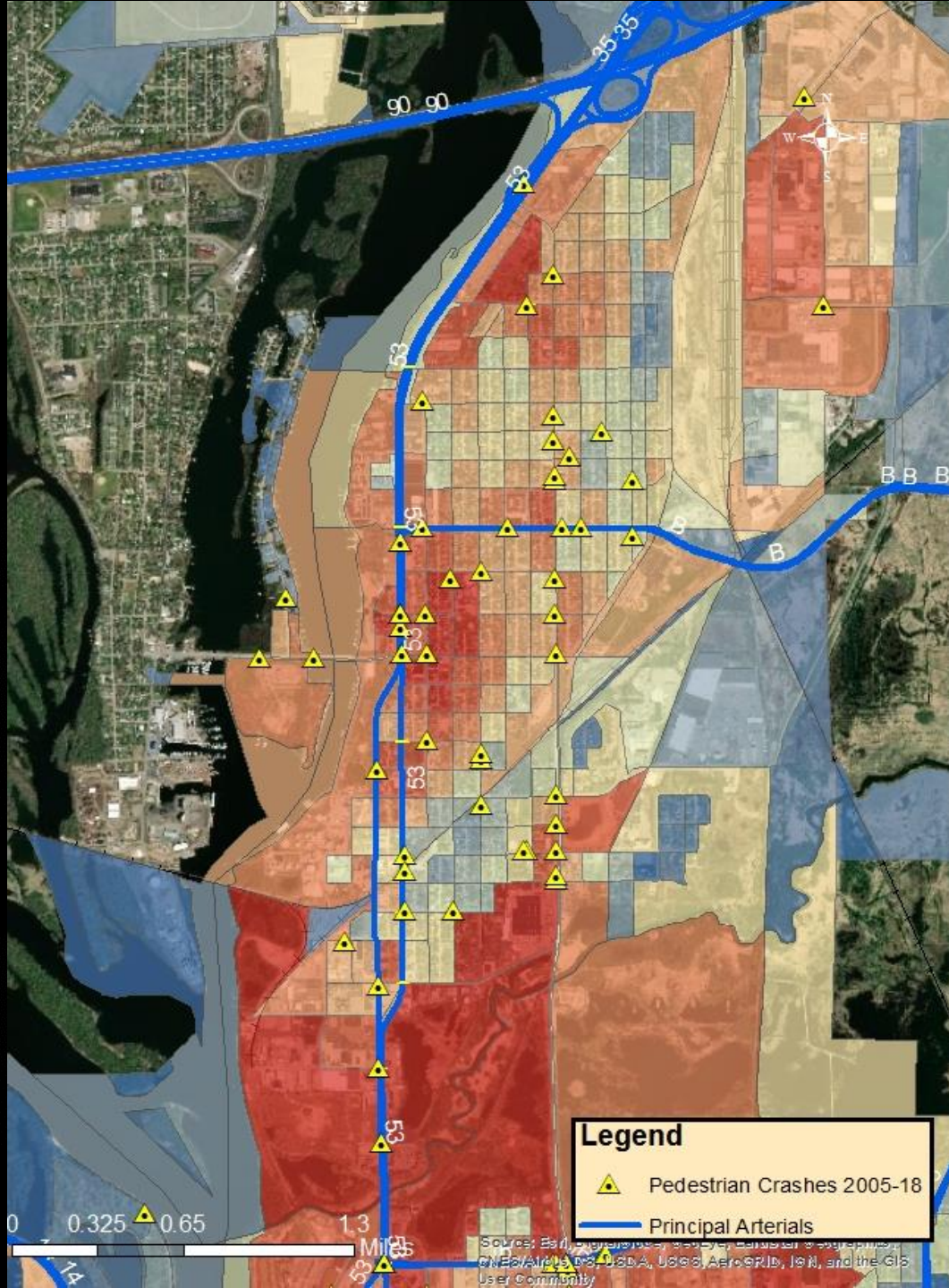
- Adopted 2012 Bicycle and Pedestrian Master Plan
- Crash Map 2005-2018
- Crash Reduction Factor of 40-73%  
[http://www.cmfclearinghouse.org/study\\_detail.cfm?stid=433](http://www.cmfclearinghouse.org/study_detail.cfm?stid=433)
- Numerous Bicycle and Pedestrian Traffic Generators in Corridor
  - Northside Elementary School
  - Coulee Montessori Charter School
  - Gordy's Market
  - Bus route and bus stops
  - Logan High School



**Legend**

-  Bicycle and Pedestrian Crashes 2005-18
-  Principal Arterials

Source: Esri, DigitalGlobe, GeoEye, Earthstar <sup>®</sup> Imagery, CNR/Airbus, USDA, USDA, AeroGRID, IGN, and the GIS User Community



**Legend**

-  Pedestrian Crashes 2005-18
-  Principal Arterials

Source: Esri, DeLorme, GeoEye, "DigitalGlobe", GeoEye, "GeoEye", IGN, USA, USGS, AeroGRID, IGN, and the GIS User Community

0 0.325 0.65 1.3 Miles



THE CITY OF  
**LA CROSSE**  
WISCONSIN



**BICYCLE AND PEDESTRIAN MASTER PLAN**  
FALL 2012



Building La Crosse's proposed bikeway network could provide positive economic impacts for the region. Over a 20-year period, the proposed bikeway network could provide residents with **\$281 million to \$299 million in total economic benefits**, including:

**\$194-202 MILLION** 

in **HEALTH + SAFETY BENEFITS** over 20 years

**\$60-69 MILLION** 

in **TRANSPORTATION + AIR QUALITY BENEFITS** over 20 years

**\$27 MILLION** 

in **ECONOMIC + PROPERTY BENEFITS** over 20 years

Interested  
in learning  
more?



The project team is happy to answer any questions. You can also read the full report, *Cycle La Crosse: Economic Impact Analysis of a Better Bikeway Network in La Crosse, WI* for more details.

[cityoflacrosse.org/bikeeconomicimpact](http://cityoflacrosse.org/bikeeconomicimpact)

# Parking Areas

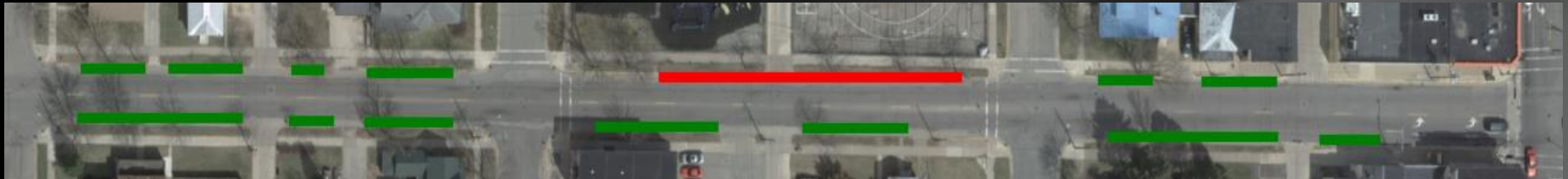


Rose  
St

Caledonia  
St

Avon  
St

Liberty  
St



Liberty  
St

Charles  
St

Kane  
St

George  
St



George  
St

Wood  
St

Loomis  
St

Prospect  
St

# Parking Data

Date	Time	Northside	Southside	Totals	Total Available	Utilization
1/25/19	13:35	3	12	15	187	8%
1/29/19	10:10	8	5	13	187	7%
1/30/19	15:30	5	6	11	187	5.8%
1/30/19	17:30	7	8	15	205	7.3%
1/31/19	23:38	2	7	9	205	4.4%
2/6/19	09:10	0	3	3	187	1.6%

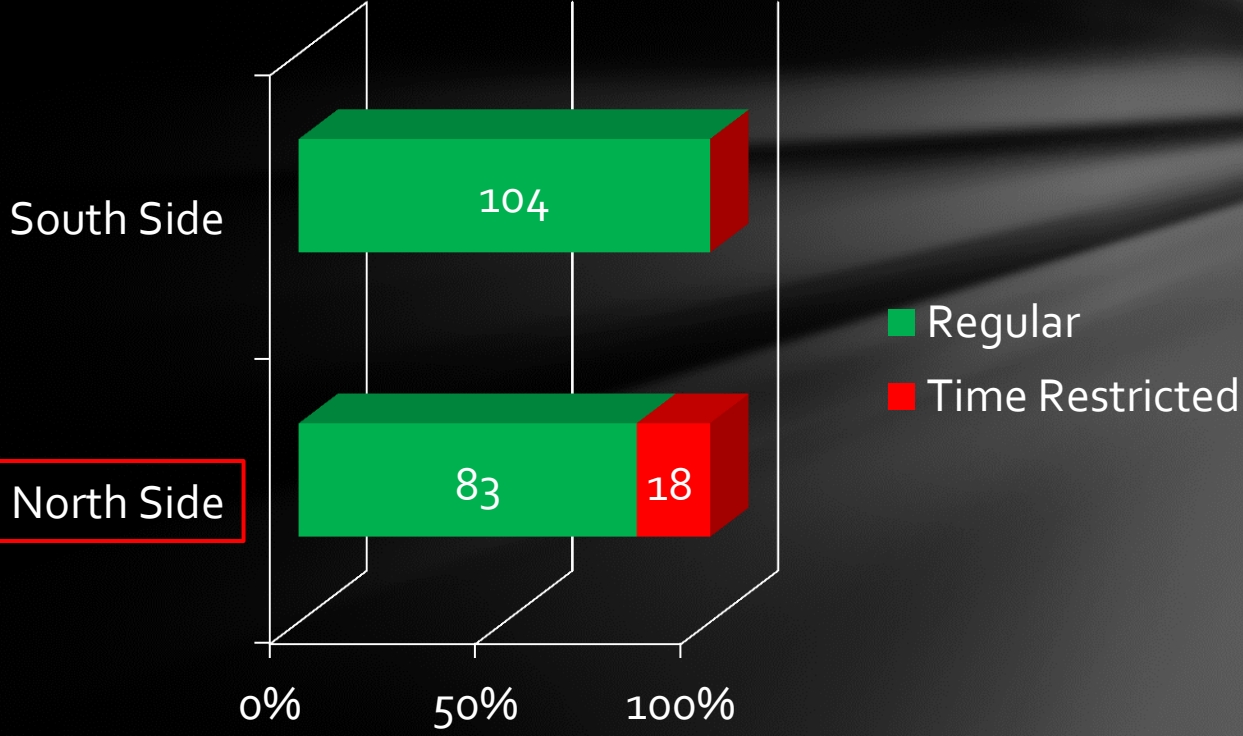
## Results:

Average Parked Vehicles: 11 Vehicles

Average Utilization: 5.7%



# Gillette Street Parking Counts



Engineering recommendation

North Side

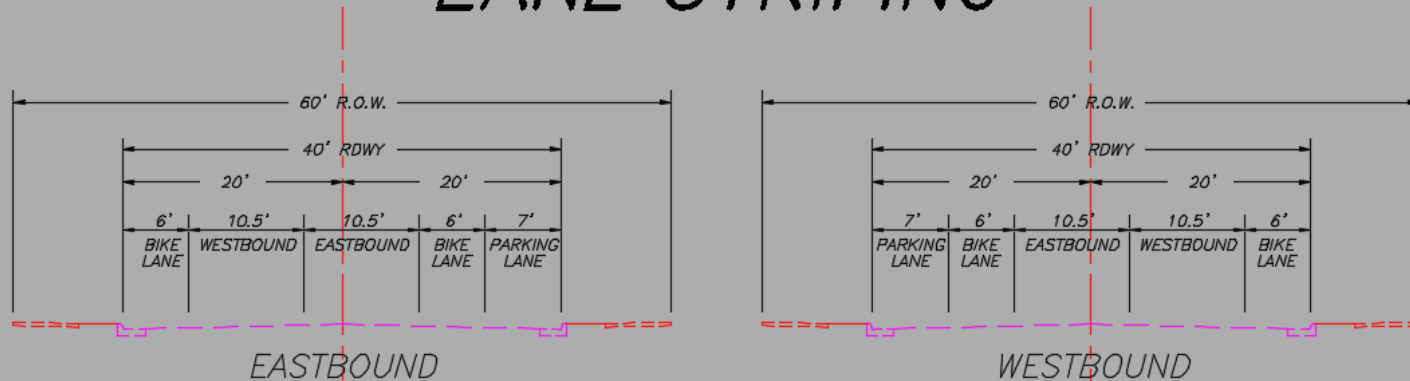
# Project Time Line

- 2019
  - George Street to Onalaska Avenue
  - Due to long lateral removal, aged and/or failing utilities
  - Preliminary Construction time frame
    - May –August Construction
    - Restoration 2020
- 2021-2022
  - UTP urban funding



# Typical Street Cross-section

## GILLETTE STREET LANE STRIPING



# Questions



Thank you for  
your time