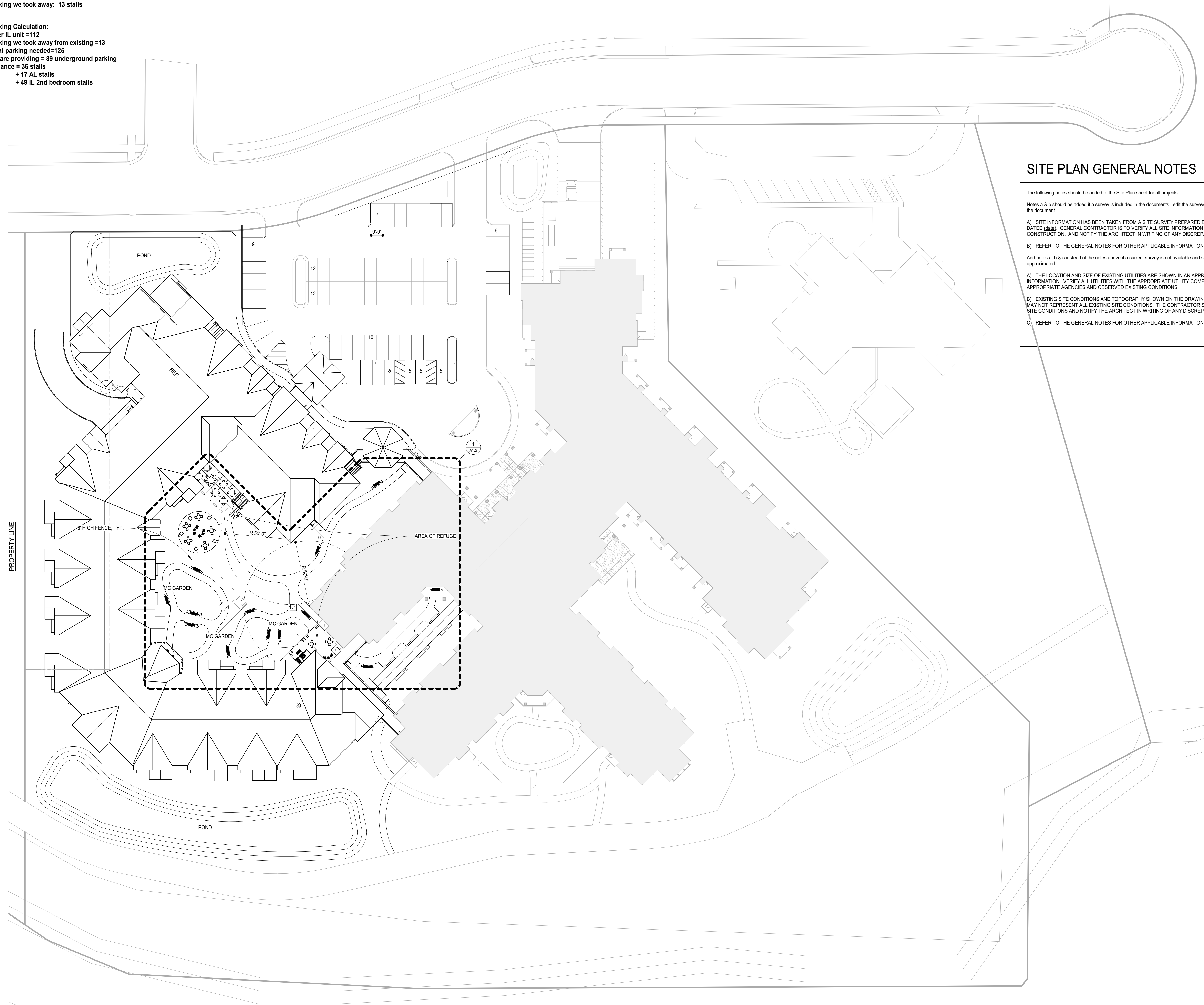




Existing Parking Lot: 76 stalls  
 New Parking Lot: 63 stalls  
 Parking we took away: 13 stalls

**Parking Calculation:**  
 1 per IL unit = 112  
 Parking we took away from existing = 13  
 Total parking needed = 125  
 We are providing = 89 underground parking  
 Variance = 36 stalls  
 + 17 AL stalls  
 + 49 IL 2nd bedroom stalls



**SITE PLAN GENERAL NOTES**

The following notes should be added to the Site Plan sheet for all projects.

Notes a & b should be added if a survey is included in the documents. edit the surveyor information and the date of the document.

A) SITE INFORMATION HAS BEEN TAKEN FROM A SITE SURVEY PREPARED BY (surveyor and address) DATED (date). GENERAL CONTRACTOR IS TO VERIFY ALL SITE INFORMATION BEFORE STARTING CONSTRUCTION, AND NOTIFY THE ARCHITECT IN WRITING OF ANY DISCREPANCIES.

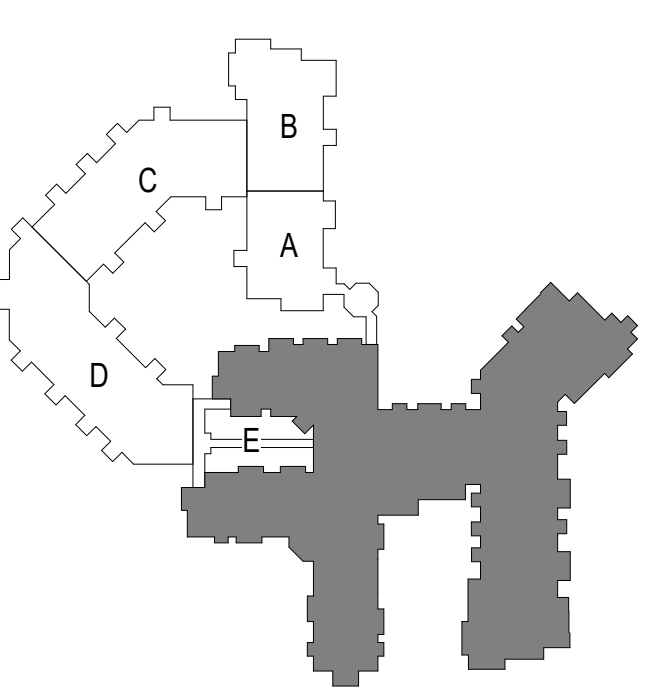
B) REFER TO THE GENERAL NOTES FOR OTHER APPLICABLE INFORMATION.

Add notes a, b & c instead of the notes above if a current survey is not available and site information has been approximated.

A) THE LOCATION AND SIZE OF EXISTING UTILITIES ARE SHOWN IN AN APPROXIMATE LOCATION FOR INFORMATION. VERIFY ALL UTILITIES WITH THE APPROPRIATE UTILITY COMPANIES, OTHER APPROPRIATE AGENCIES AND OBSERVED EXISTING CONDITIONS.

B) EXISTING SITE CONDITIONS AND TOPOGRAPHY SHOWN ON THE DRAWINGS ARE APPROXIMATE AND MAY NOT REPRESENT ALL EXISTING SITE CONDITIONS. THE CONTRACTOR SHALL VERIFY EXISTING SITE CONDITIONS AND NOTIFY THE ARCHITECT IN WRITING OF ANY DISCREPANCIES WITH DRAWINGS.

C) REFER TO THE GENERAL NOTES FOR OTHER APPLICABLE INFORMATION.



**SITE PLAN**

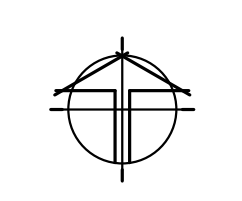
Issues and Revisions:

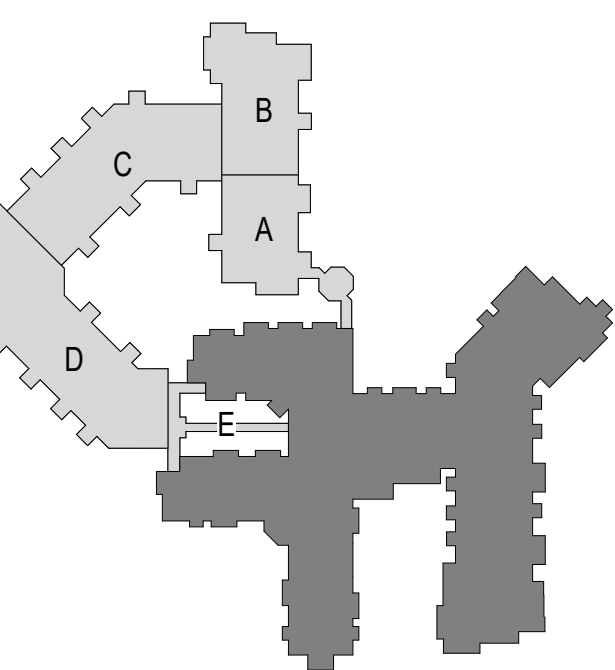
|  |  |
|--|--|
|  |  |
|  |  |
|  |  |
|  |  |
|  |  |
|  |  |
|  |  |
|  |  |
|  |  |
|  |  |

Commission No: 12728-17031  
 Drawn by: MEJ  
 Checked by: TP

SHEET

1 SITE PLAN  
 A1.1 1" = 30'-0"





Based on Revisions:

|  |
|--|
|  |
|  |
|  |
|  |
|  |
|  |
|  |
|  |
|  |
|  |
|  |
|  |
|  |
|  |
|  |
|  |
|  |
|  |
|  |
|  |
|  |
|  |

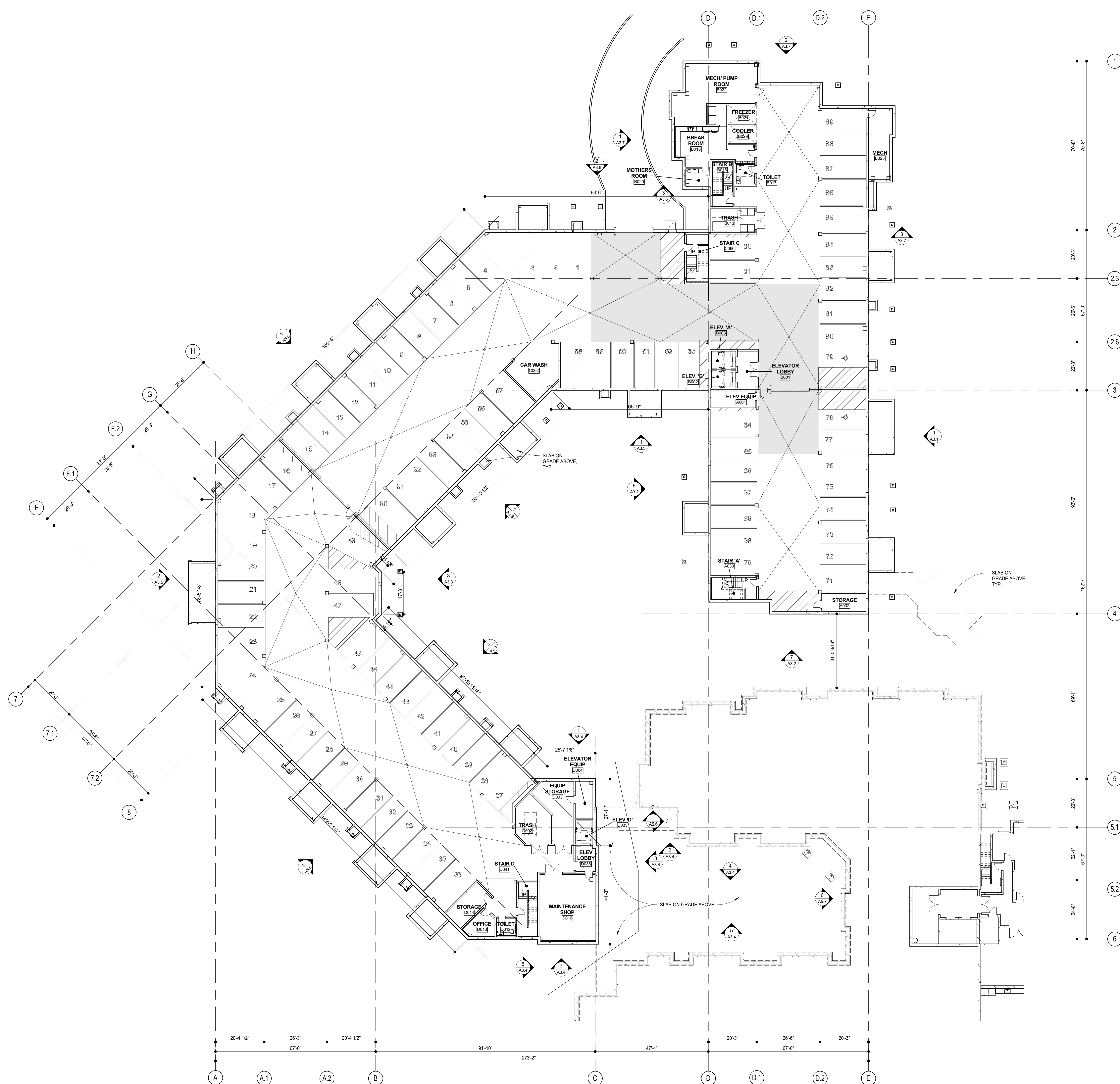
Commission No: 12728-17031

Drawn by: MEJ

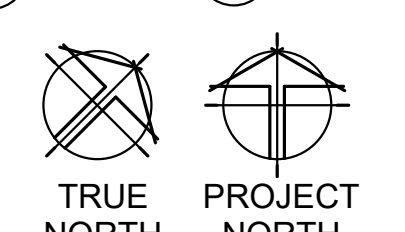
Checked by: TP

SHEET

A2.1

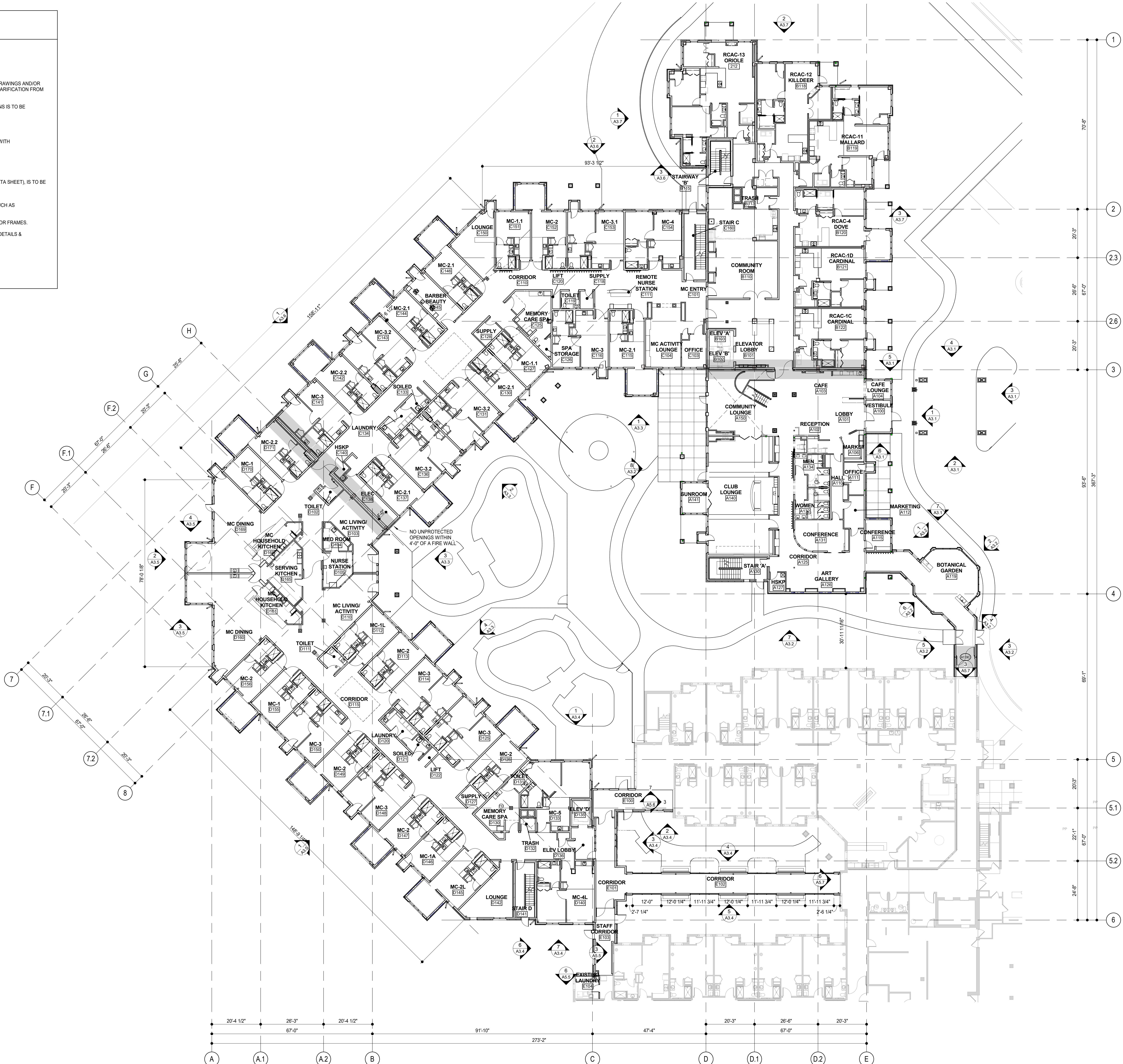


1 LOWER LEVEL FLOOR PLAN - OVERALL  
A2.1 1/16" = 1'-0"

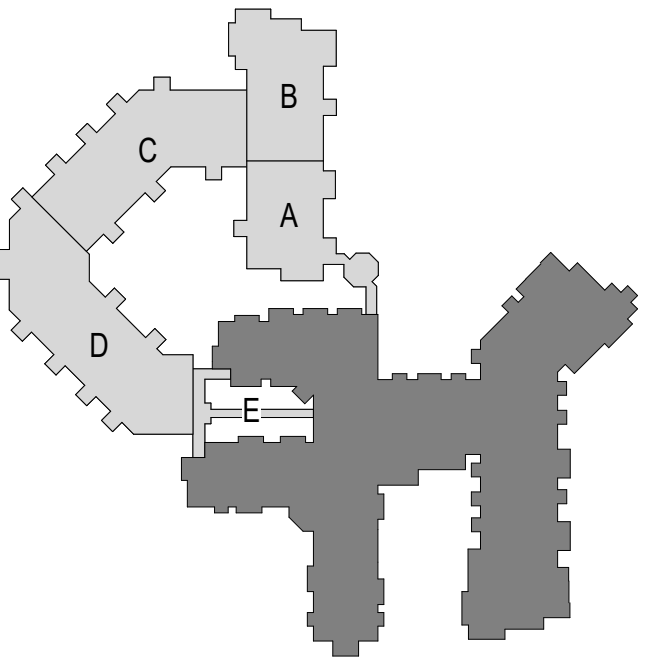
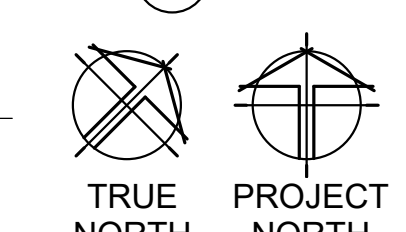


### FLOOR PLAN GENERAL NOTES

- A) DO NOT SCALE DRAWINGS.
- B) NOTIFY ARCHITECT IMMEDIATELY OF ANY DISCREPANCIES.
- C) IN THE CASE OF AMBIGUITIES, DISCREPANCIES, OR IRREGULARITIES IN THE DRAWINGS AND/OR SPECIFICATIONS, THE CONTRACTOR SHALL SUBMIT A WRITTEN REQUEST FOR CLARIFICATION FROM THE ARCHITECT BEFORE PROCEEDING WITH THE WORK.
- D) IN ALL CONSTRUCTION TYPES, ALL WOOD USED IN THE FOLLOWING LOCATIONS IS TO BE PRESERVATIVE-TREATED:
  1. WOOD IN CONTACT WITH THE GROUND OR WATER.
  2. WOOD IN EXTERIOR FOUNDATION WALLS.
  3. WOOD IN CONTACT WITH CONCRETE SLABS-ON-GRADE, OR IN CONTACT WITH CONCRETE OR MASONRY FOUNDATION WALLS.
  4. WOOD WITHIN A CRAWL SPACE OVER EXPOSED EARTH.
  5. AT OTHER LOCATIONS NOTED ON THE CONSTRUCTION DOCUMENTS.
- E) ALL WOOD USED IN BUILDINGS OF TYPE I OR II CONSTRUCTION (SEE CODE DATA SHEET), IS TO BE FIRE-RETARDANT-TREATED, WITH THE FOLLOWING EXCEPTIONS:
  1. PRESERVATIVE-TREATED WOOD AS NOTED IN GENERAL NOTE 'D' ABOVE.
  2. INTERIOR FLOOR FINISH AND INTERIOR FINISHES, TRIM AND MILLWORK SUCH AS CABINETS, DOORS, DOOR FRAMES AND WINDOWS.
  3. BLOCKING FOR HANDRAILS, MILLWORK, CABINETS, AND WINDOW AND DOOR FRAMES.
- F) SEE SHEET A0.2 FOR SYMBOLS, INDICATION OF MATERIALS, PARTITION TYPE DETAILS & ABBREVIATIONS.



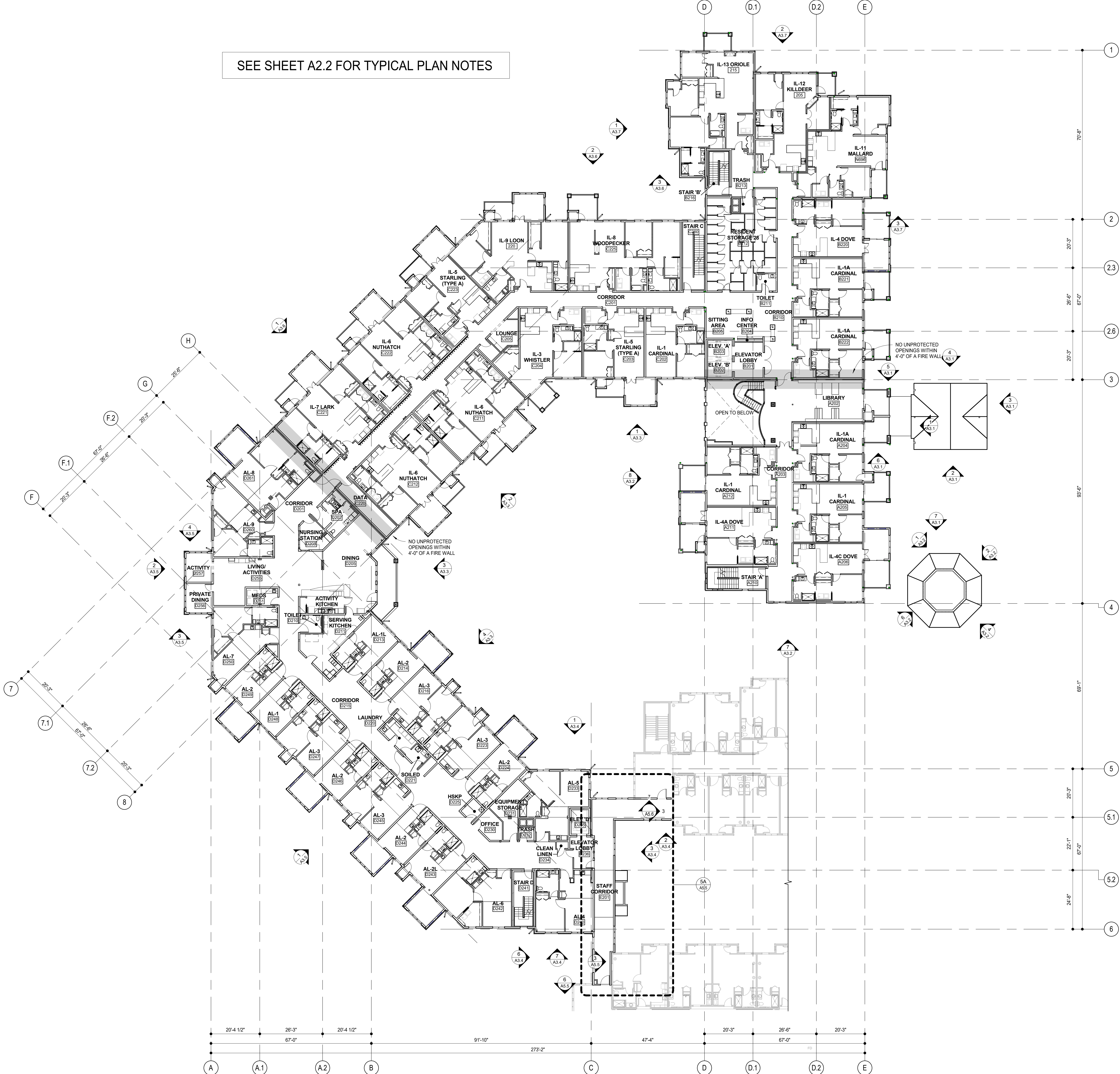
1 A2.2 FIRST LEVEL FLOOR PLAN - OVERALL  
1/16" = 1'-0"



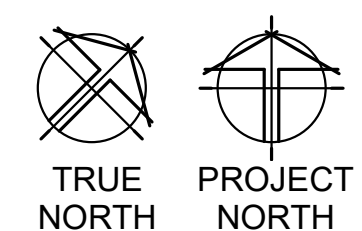
Notes on Sheets:

|  |
|--|
|  |
|  |
|  |
|  |
|  |
|  |
|  |
|  |
|  |
|  |
|  |
|  |
|  |

SEE SHEET A2.2 FOR TYPICAL PLAN NOTES



1 A2.3 SECOND LEVEL FLOOR PLAN - OVERALL  
1/16" = 1'-0"

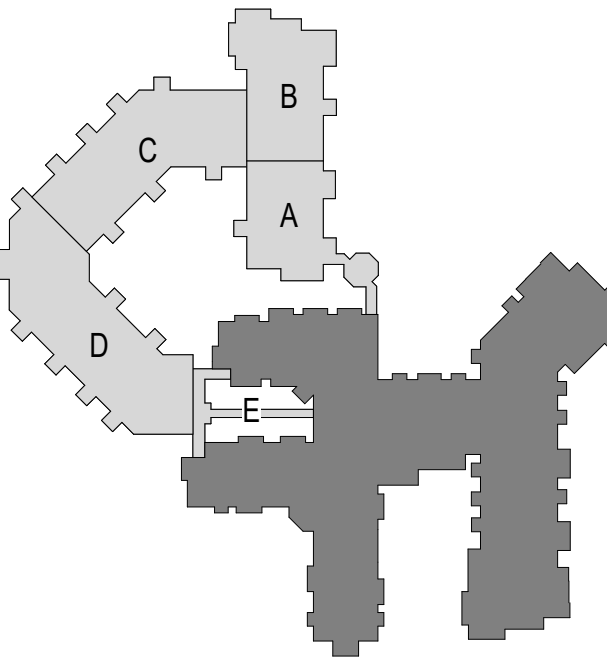


POPE ASSOCIATES, INC.  
1295 BANDANA BLVD N, SUITE 200  
ST. PAUL, MN 55108-2735  
(651) 642-9200 | FAX (651) 642-1101  
www.popearch.com



EAGLE CREST  
SOUTH ADDITION  
PHASE 2  
LA CROSSE, WI

CITY SUBMISSION  
CUP & PDD  
3/2/2018



OVERALL SECOND  
LEVEL FLOOR PLAN

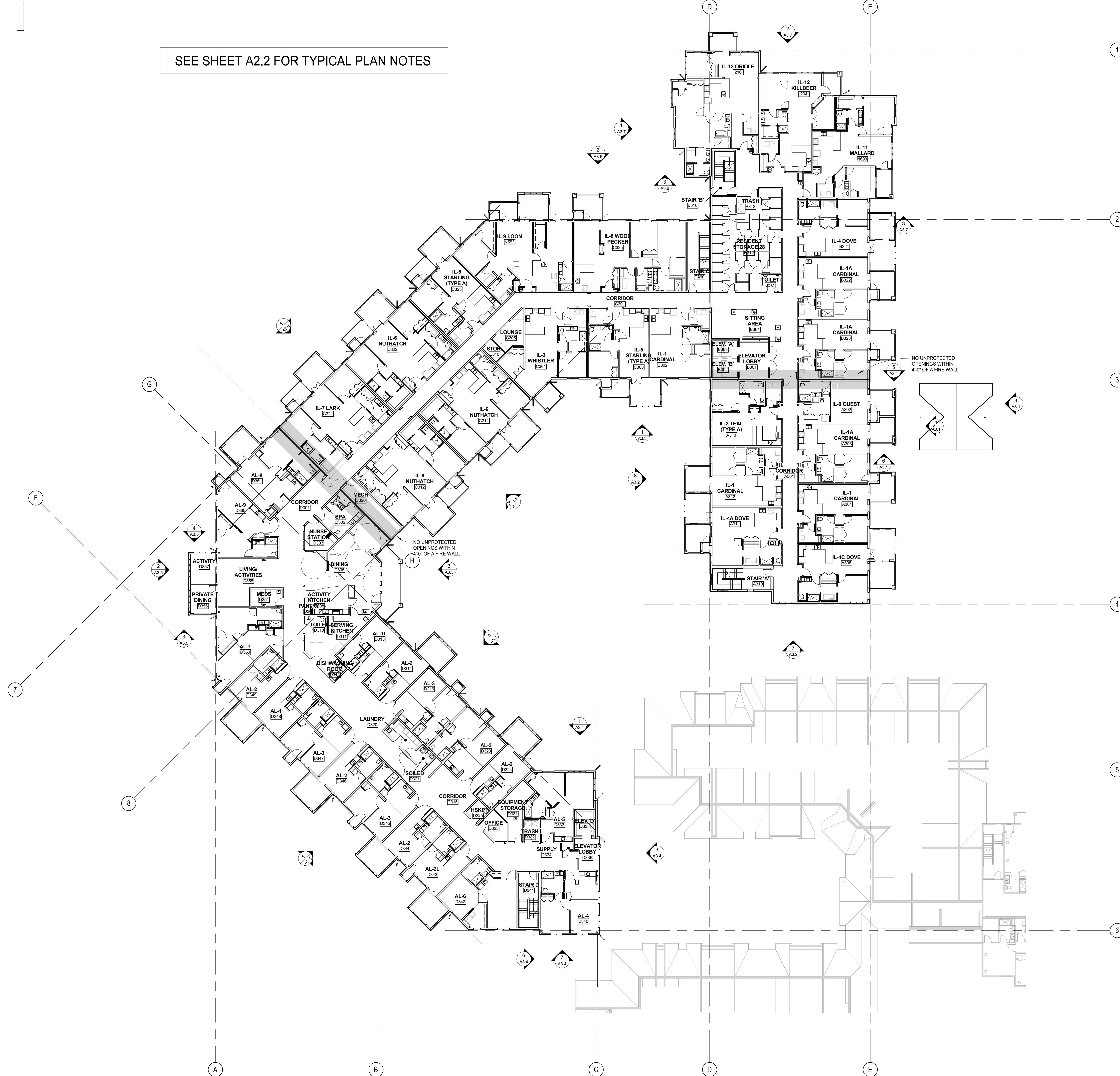
Revisions table with columns for revision number, description, and date.

Commission No: 12728-17031  
Prepared by: MEJ  
Checked by: TP

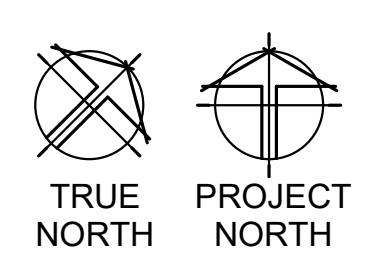
SHEET

A2.3

SEE SHEET A2.2 FOR TYPICAL PLAN NOTES



1  
A2.4  
THIRD LEVEL FLOOR PLAN - OVERALL  
1/16" = 1'-0"



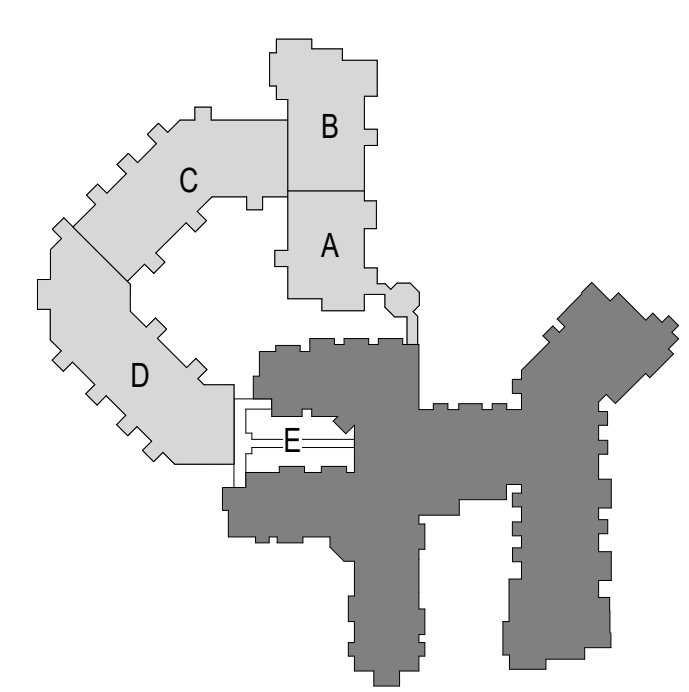
**POPE**  
ARCHITECTS

POPE ASSOCIATES, INC.  
1295 BANDANA BLVD N, SUITE 200  
ST. PAUL, MN 55108-2735  
(651) 642-9200 | FAX (651) 642-1101  
www.popearch.com

**BETHANY**  
LUTHERAN HOMES  
A GUNDERSEN HEALTH SYSTEM AFFILIATE

EAGLE CREST  
SOUTH ADDITION  
PHASE 2  
LA CROSSE, WI

CITY SUBMISSION  
CUP & PDD  
3/2/2018



OVERALL THIRD  
LEVEL FLOOR PLAN

Issue and Revisions:

|  |  |
|--|--|
|  |  |
|  |  |
|  |  |
|  |  |
|  |  |
|  |  |
|  |  |
|  |  |
|  |  |
|  |  |

Commission No: 12728-17031  
Drawn by: MEJ  
Checked by: TP

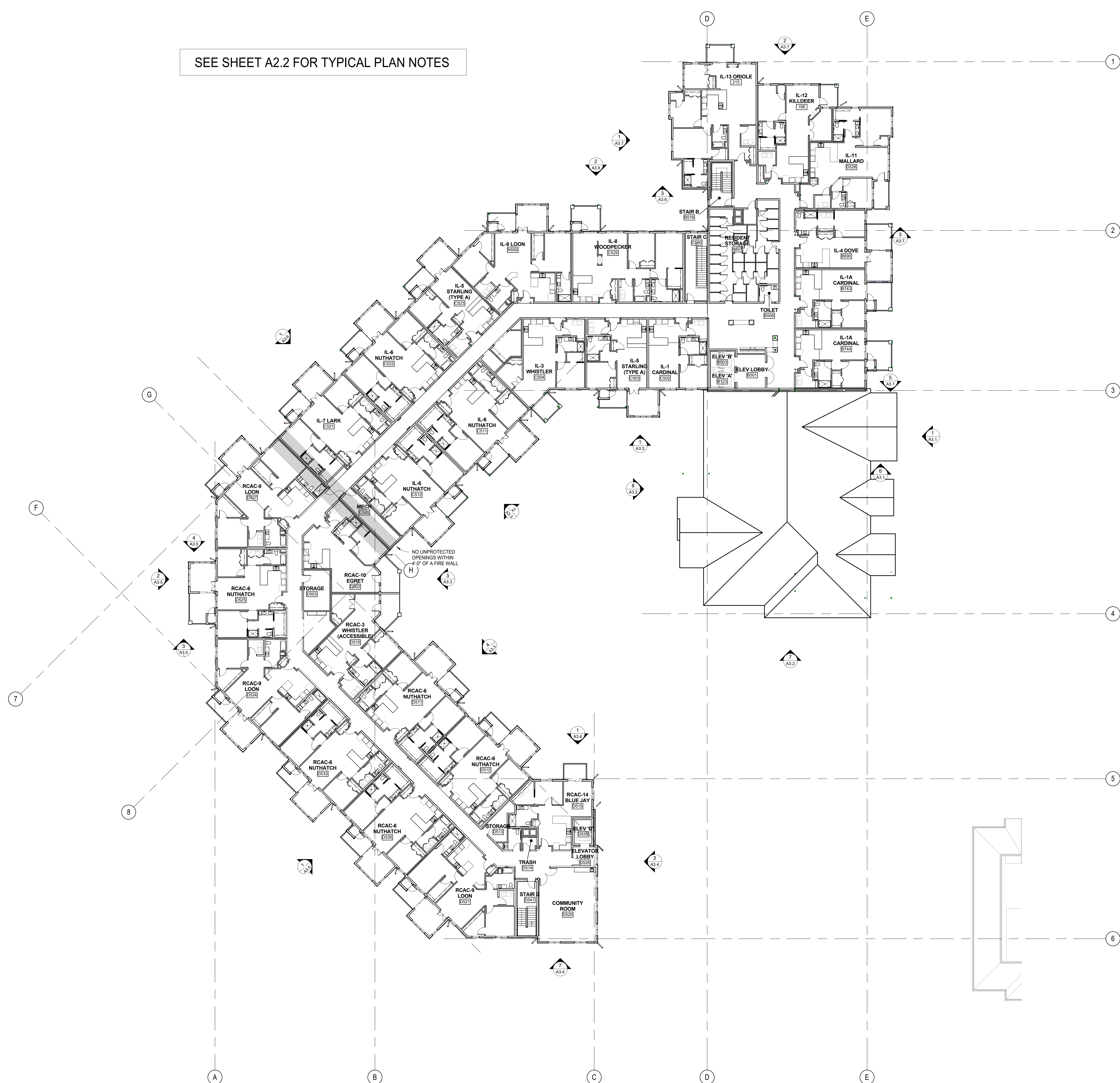
SHEET

**A2.4**

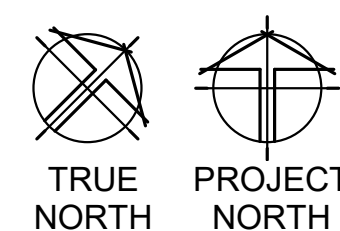
1" = 12' SCALE  
C:\Reel Projects\17031 Eagle Crest\Central\A17\_Spreadsheet.rvt  
3/1/2018 10:58:56 AM



SEE SHEET A2.2 FOR TYPICAL PLAN NOTES



1 A2.6 FIFTH LEVEL FLOOR PLAN - OVERALL  
1/16" = 1'-0"

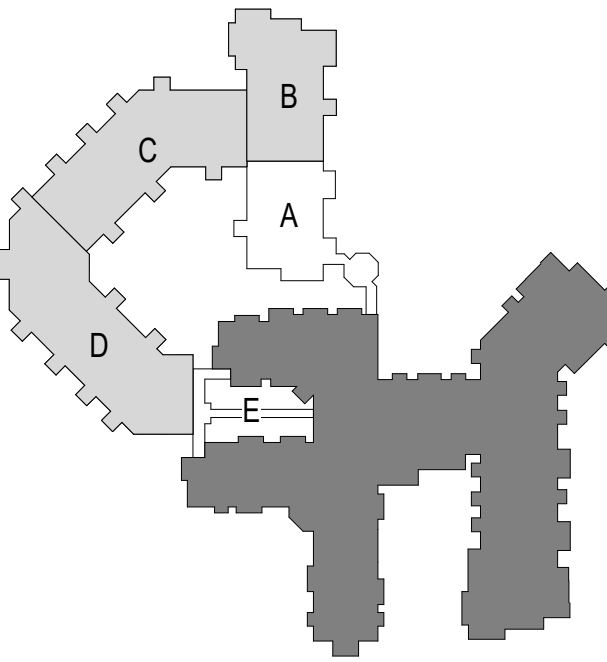


POPE ASSOCIATES, INC.  
1295 BANDANA BLVD N, SUITE 200  
ST. PAUL, MN 55108-2735  
(651) 642-9200 | FAX (651) 642-1101  
www.popearch.com



EAGLE CREST  
SOUTH ADDITION  
PHASE 2  
LA CROSSE, WI

CITY SUBMISSION  
CUP & PDD  
3/2/2018



OVERALL FIFTH  
LEVEL FLOOR PLAN

Based on Revisions:

|  |
|--|
|  |
|  |
|  |
|  |
|  |
|  |
|  |
|  |
|  |
|  |
|  |

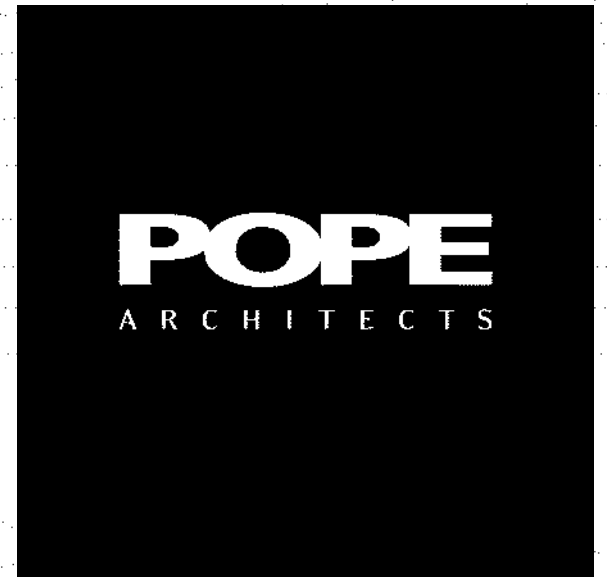
Commission No. 12728-17031  
Drawn by MEJ  
Checked by TP

SHEET

A2.6

TRUE NORTH PROJECT NORTH  
1/16" = 1'-0"



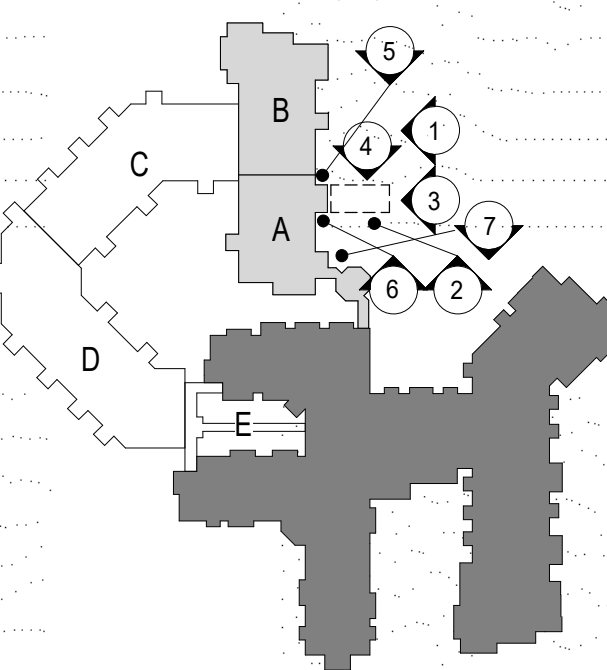


POPE ASSOCIATES, INC.  
1295 BANDANA BLVD N, SUITE 200  
ST. PAUL, MN 55108-2735  
(651) 642-9200 | FAX (651) 642-1101  
www.popearch.com

**BETHANY**  
LUTHERAN HOMES  
A GUNDERSEN HEALTH SYSTEM AFFILIATE

EAGLE CREST  
SOUTH ADDITION  
PHASE 2  
LA CROSSE, WI

CITY SUBMISSION  
CUP & PDD  
3/2/2018



EXTERIOR  
ELEVATIONS - AREAS  
A & B

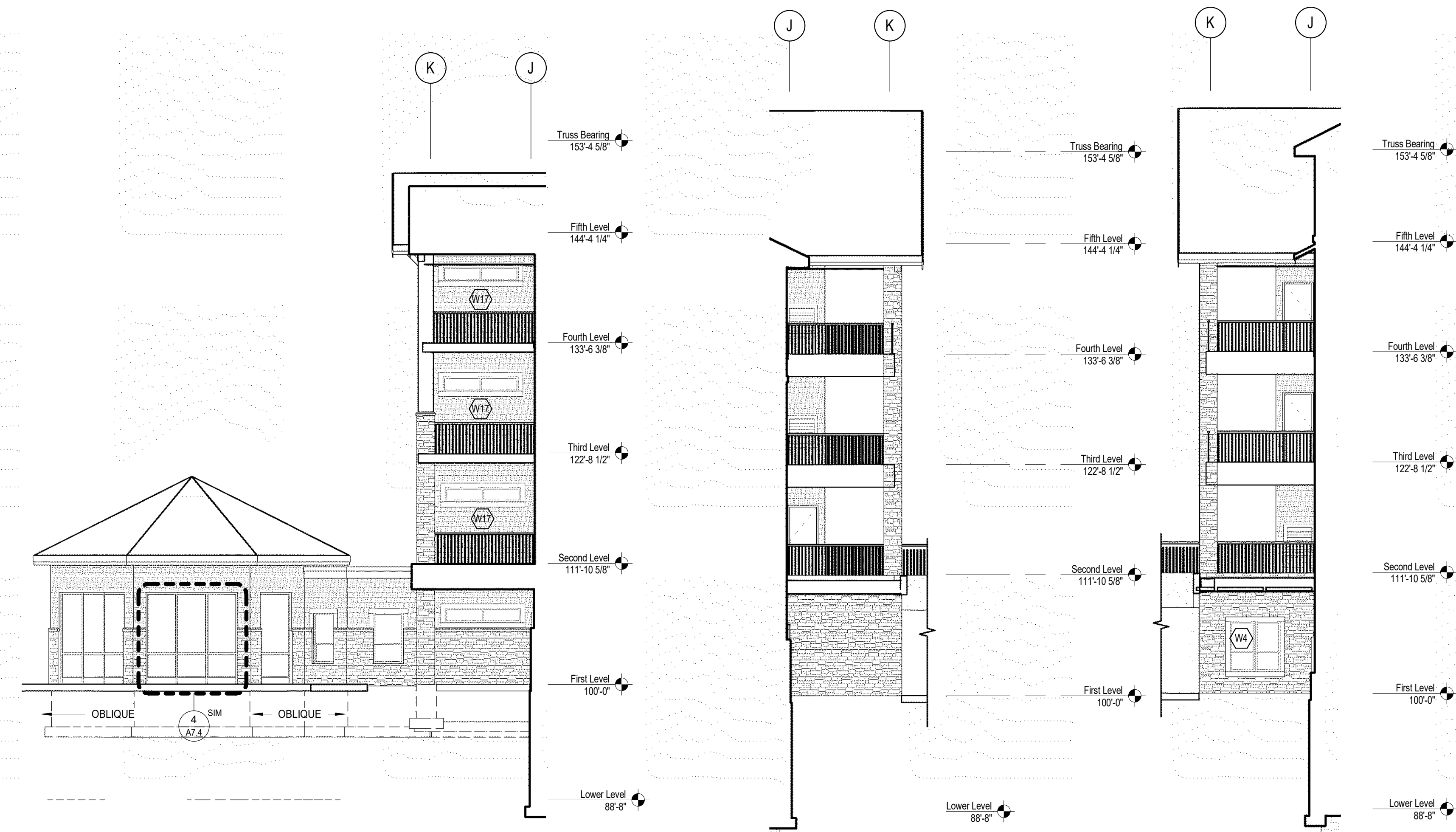
Name: \_\_\_\_\_  
Title: \_\_\_\_\_  
Date: \_\_\_\_\_

12728-17031  
MEJ  
TP

SHEET

**A3.1**

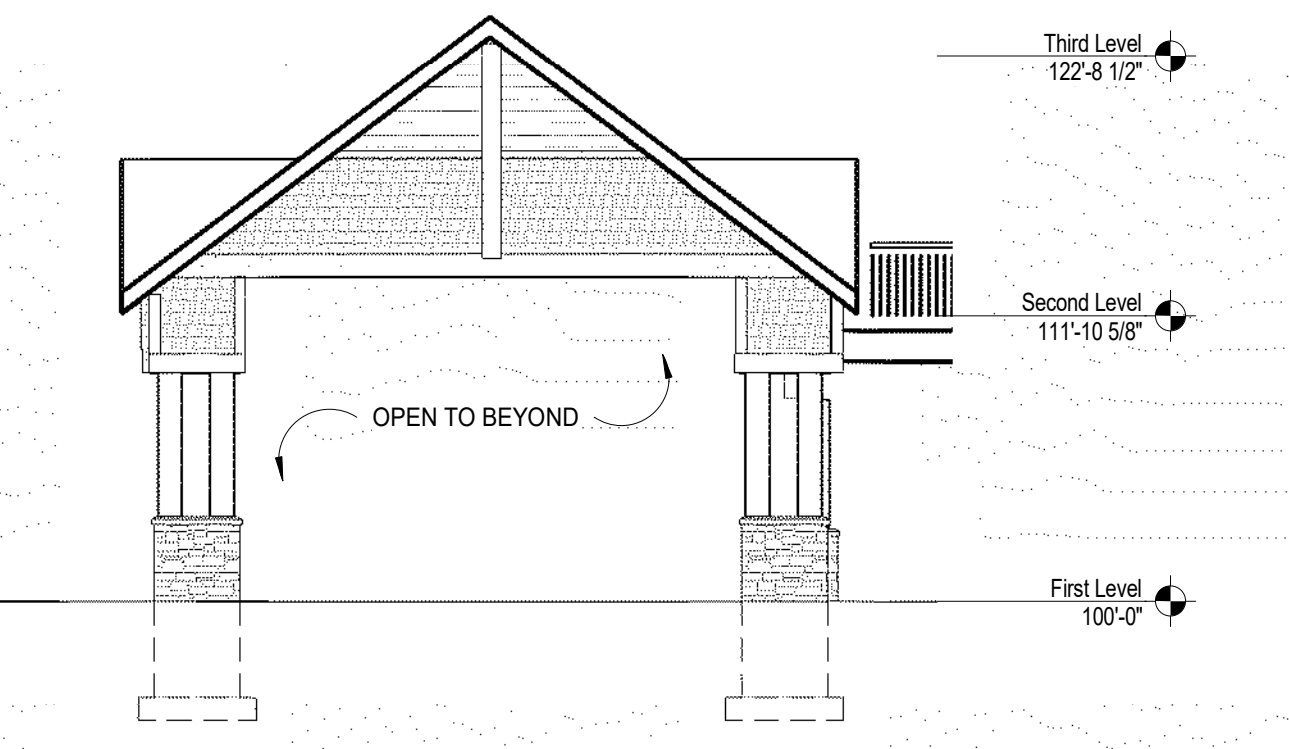
| Keystone Legend |  |
|-----------------|--|
| 1               | ASPHALT SHINGLES - CLASS 'A'             |
| 3               | PREFIN. METAL FASCIA AND SOFFIT          |
| 8               | OUTLINE OF FOUNDATION                    |
| 10              | VINYL CLAD WINDOWS                       |
| 11              | CEMENT BD. WRAPPED COLUMN                |
| 15              | WOOD TRELLIS - PT. COLOR TBD             |
| 16              | SLIDING GLASS DOOR                       |
| 18              | FIBER CEMENTBOARD SHINGLE SIDING         |
| 19              | FIBER CEMENTBOARD LAP SIDING - COLOR TBD |
| 21              | 1X8 FIBER CEMENT TRIM - PT. COLOR TBD    |
| 22              | 1X10 FIBER CEMENT TRIM - PT. COLOR TBD   |
| 23              | 1X12 FIBER CEMENT TRIM - PT. COLOR TBD   |
| 24              | MANUFACTURED STONE VENEER                |
| 25              | MANUFACTURED STONE SILL                  |
| 26              | LOUVER - PT. COLOR TBD                   |
| 28              | DECORATIVE RAILING SYSTEM                |
| 31              | COLORED ROCKFACE CMU                     |



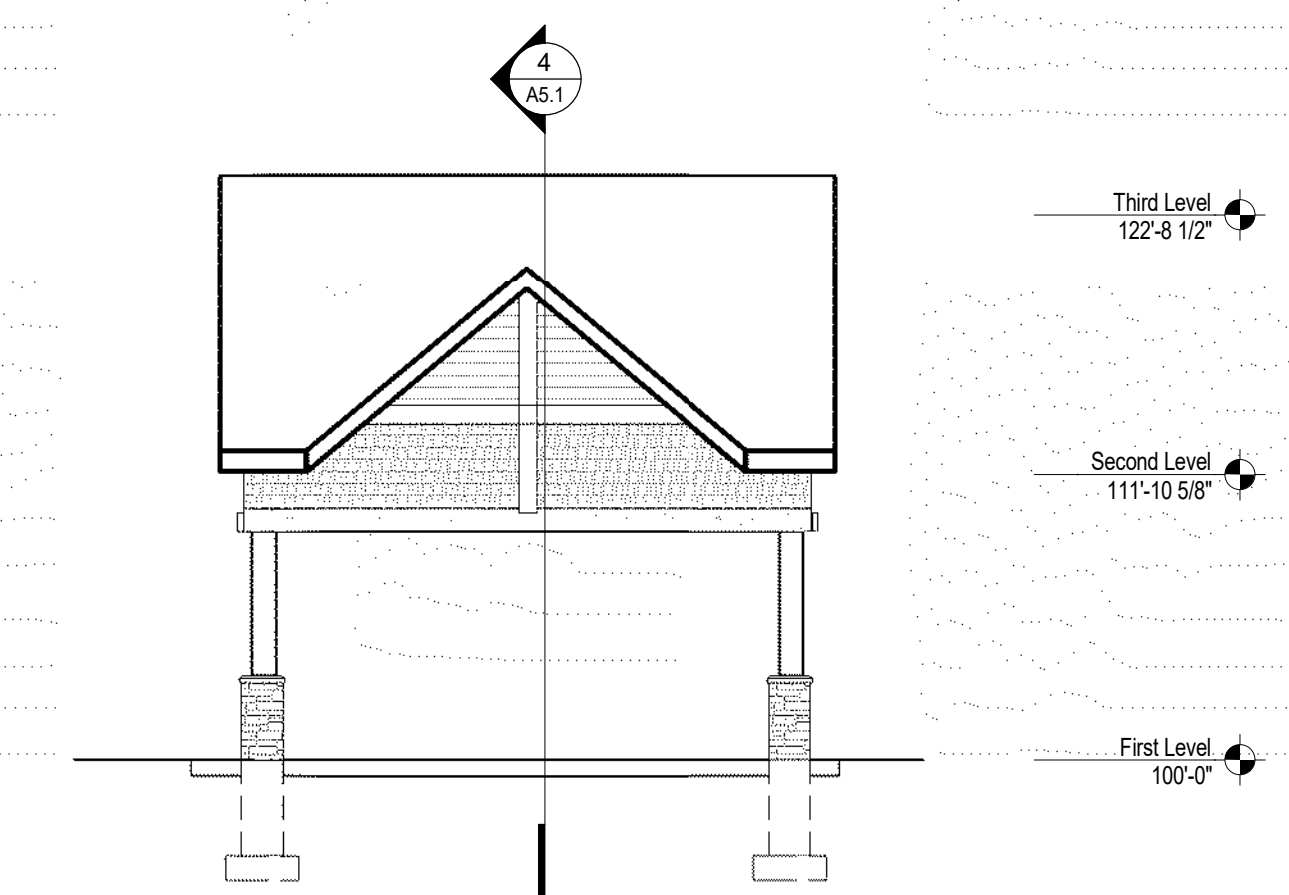
7 BUMP- AREA A & BOTANICAL CONNECTION (N)  
A3.1 1/8" = 1'-0"

6 BUMP- AREA A (S)  
A3.1 1/8" = 1'-0"

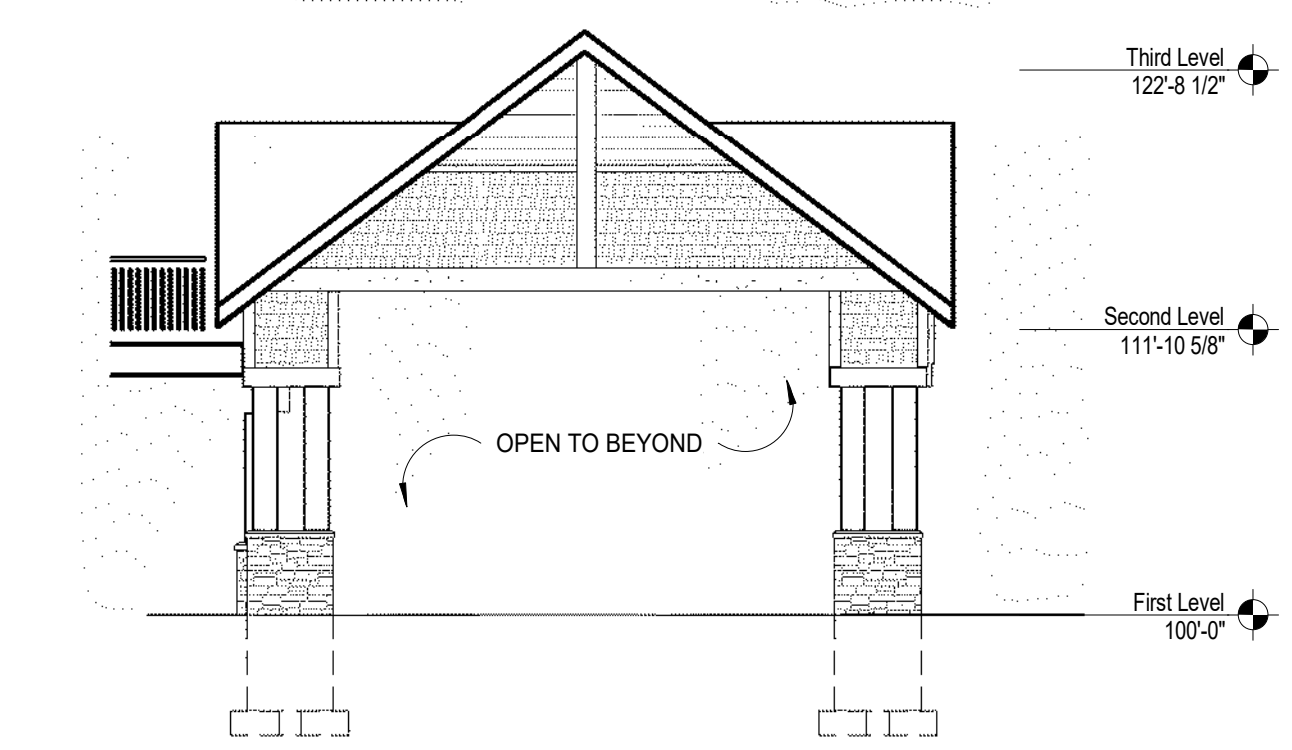
5 BUMP AREA A (N)  
A3.1 1/8" = 1'-0"



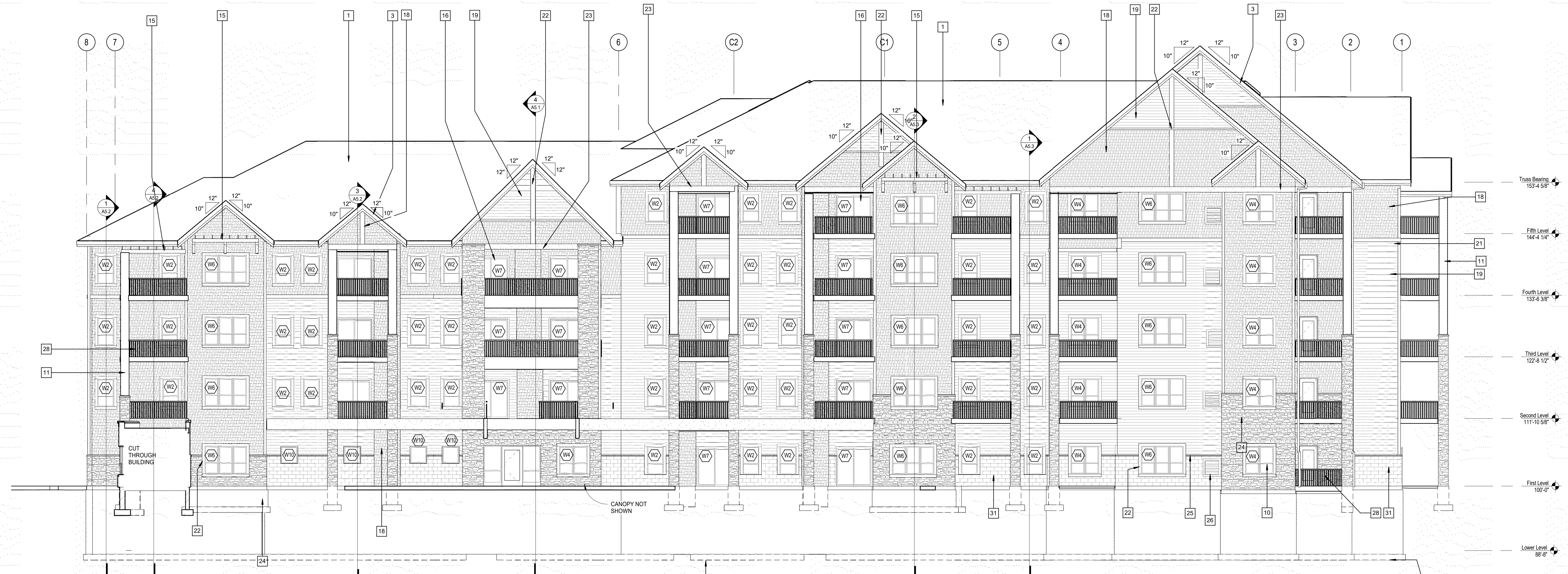
4 CANOPY- AREA A (N)  
A3.1 1/8" = 1'-0"



3 CANOPY- AREA A (E)  
A3.1 1/8" = 1'-0"



2 CANOPY- AREA A (S)  
A3.1 1/8" = 1'-0"



1 EXTERIOR ELEVATION- EAST  
A3.1 1/8" = 1'-0"





4  
A3.3  
EXTERIOR ELEVATION- AREA D (NE)  
1/8" = 1'-0"



3  
A3.3  
EXTERIOR ELEVATION 1- AREA D (E)  
1/8" = 1'-0"

**Keynote Legend**

|    |  |
|----|--|
| 1  | ASPHALT SHINGLES - CLASS 'A'             |
| 3  | PREFIN. METAL FASCIA AND SOFFIT          |
| 8  | OUTLINE OF FOUNDATION                    |
| 10 | VINYL CLAD WINDOW/S                      |
| 11 | CEMENT BD. WRAPPED COLUMN                |
| 16 | SLIDING GLASS DOOR                       |
| 18 | FIBER CEMENTBOARD SHINGLE SIDING         |
| 19 | FIBER CEMENTBOARD LAP SIDING - COLOR TBD |
| 20 | 1X6 FIBER CEMENT TRIM - PT. COLOR TBD    |
| 21 | 1X8 FIBER CEMENT TRIM - PT. COLOR TBD    |
| 22 | 1X10 FIBER CEMENT TRIM - PT. COLOR TBD   |
| 23 | 1X12 FIBER CEMENT TRIM - PT. COLOR TBD   |
| 24 | MANUFACTURED STONE VENEER                |
| 25 | MANUFACTURED STONE SILL                  |
| 28 | DECORATIVE RAILING SYSTEM                |
| 31 | COLORLED ROCKFACE CMU                    |



2  
A3.3  
EXTERIOR ELEVATION- AREA C (SE)  
1/8" = 1'-0"



1  
A3.3  
EXTERIOR ELEVATION- AREA C (S)  
1/8" = 1'-0"

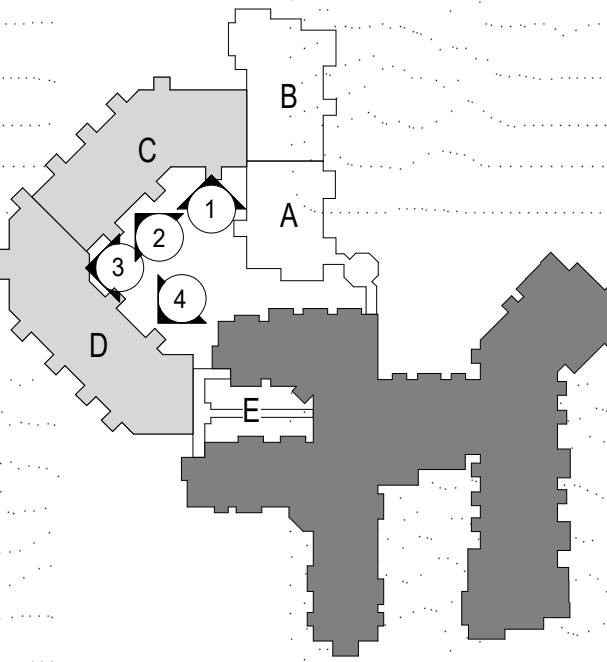


POPE ASSOCIATES, INC.  
1295 BANDANA BLVD N, SUITE 200  
ST. PAUL, MN 55108-2735  
(651) 642-9200 | FAX (651) 642-1101  
www.popearch.com



EAGLE CREST  
SOUTH ADDITION  
PHASE 2  
LA CROSSE, WI

CITY SUBMISSION  
CUP & PDD  
3/2/2018



EXTERIOR  
ELEVATIONS- AREAS  
C & D

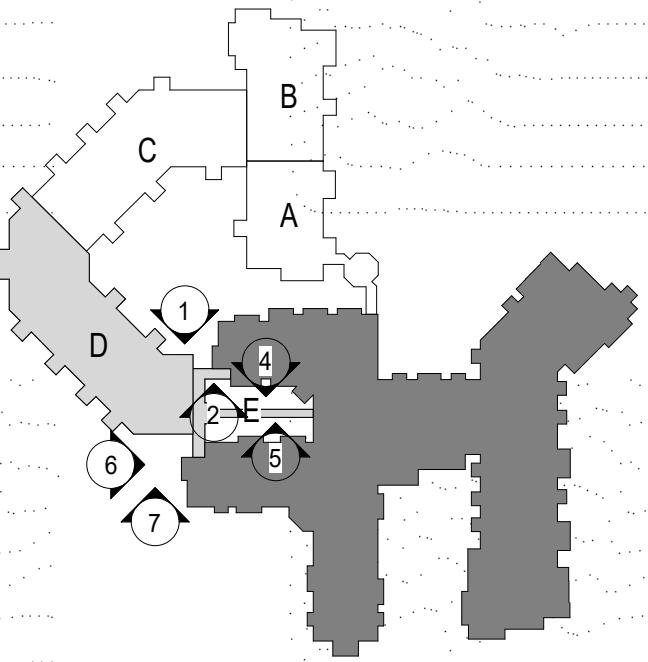
Notes on Plans:

|  |
|--|
|  |
|  |
|  |
|  |
|  |
|  |
|  |
|  |
|  |

12728-17031  
MEJ  
TP

SHEET

A3.3



EXTERIOR  
ELEVATIONS- AREAS  
D & E

Notes on Plans:

|  |
|--|
|  |
|  |
|  |
|  |
|  |
|  |
|  |
|  |
|  |
|  |

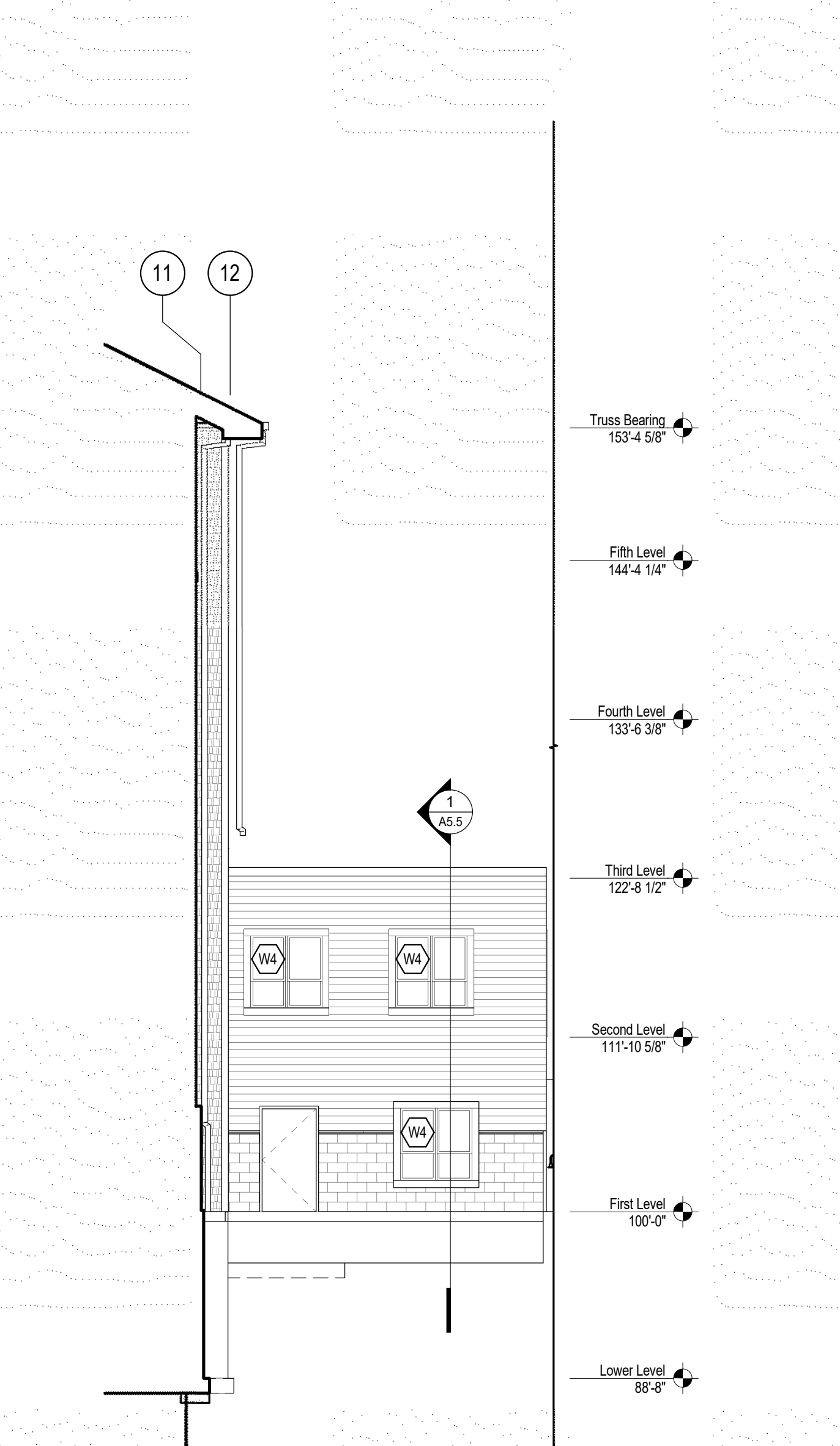
|              |             |
|--------------|-------------|
| Revision No. | 12728-17031 |
| Drawn by     | MEJ         |
| Checked by   | TP          |

SHEET

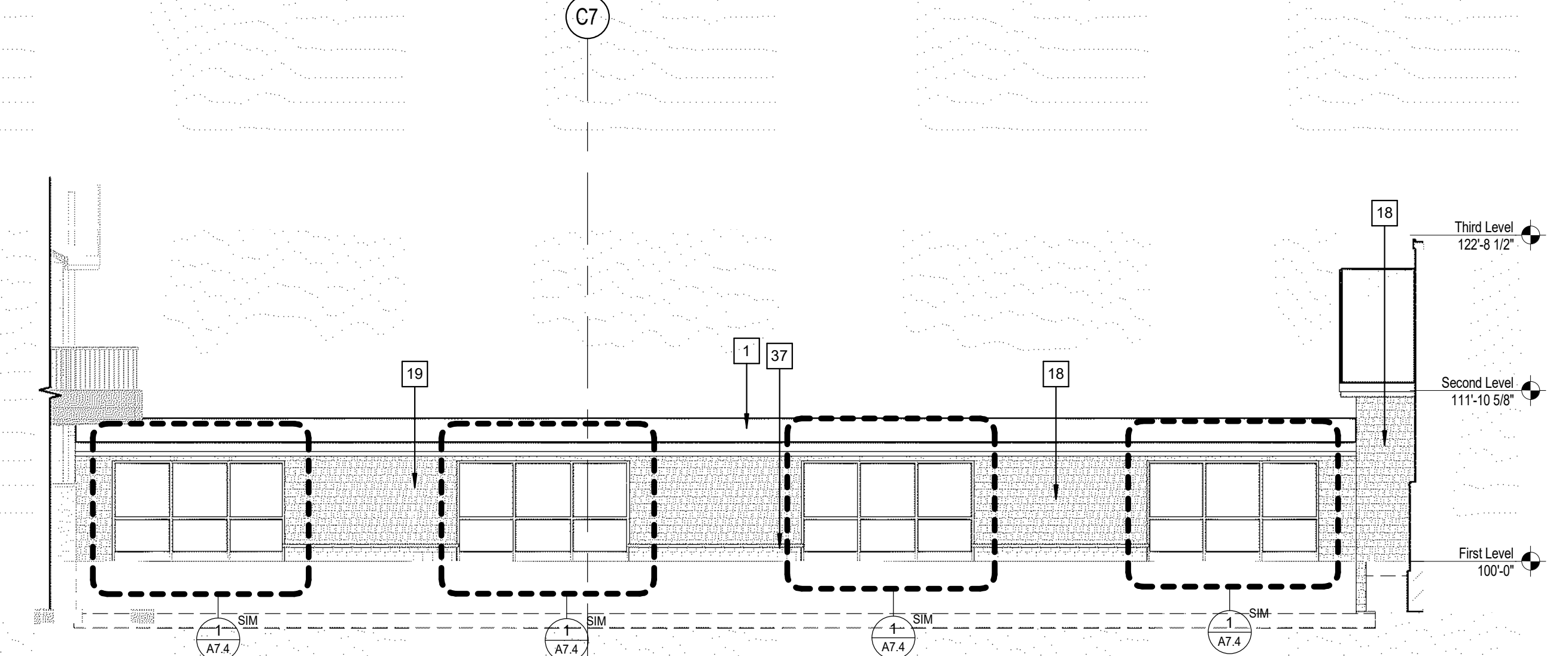
A3.4



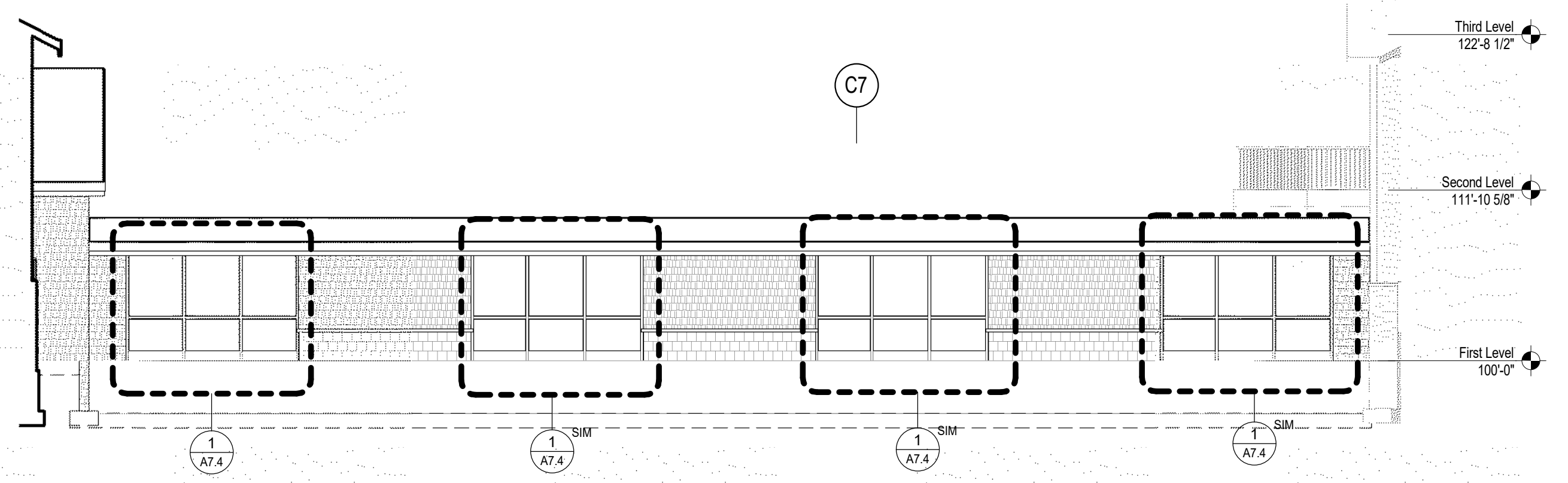
7 EXTERIOR ELEVATION- AREA D (S)  
A3.4 1/8" = 1'-0"



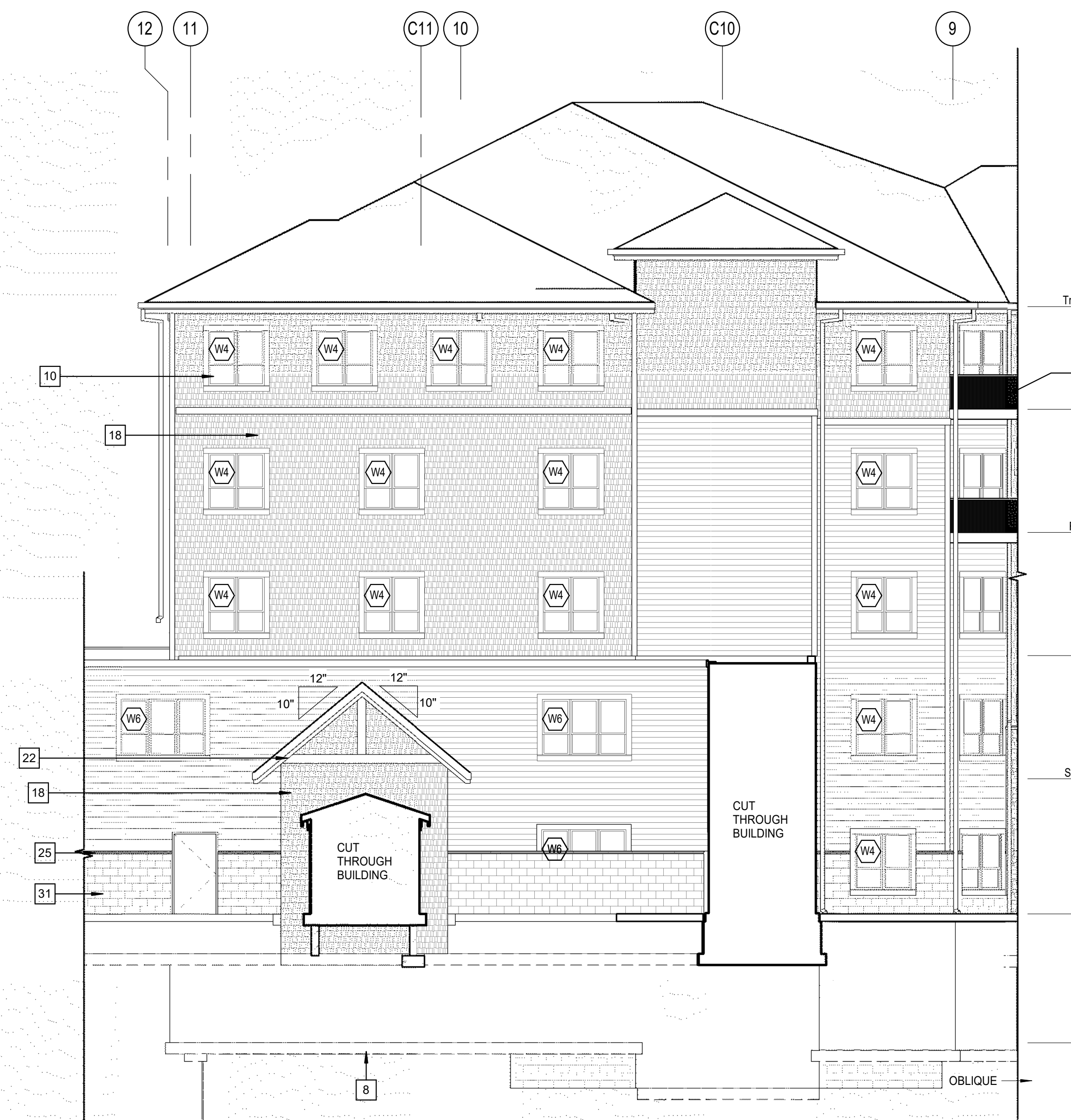
6 EXTERIOR ELEVATION- AREA D (W)  
A3.4 1/8" = 1'-0"



4 EXTERIOR ELEVATION OF LINK - AREA D (N)  
A3.4 1/8" = 1'-0"



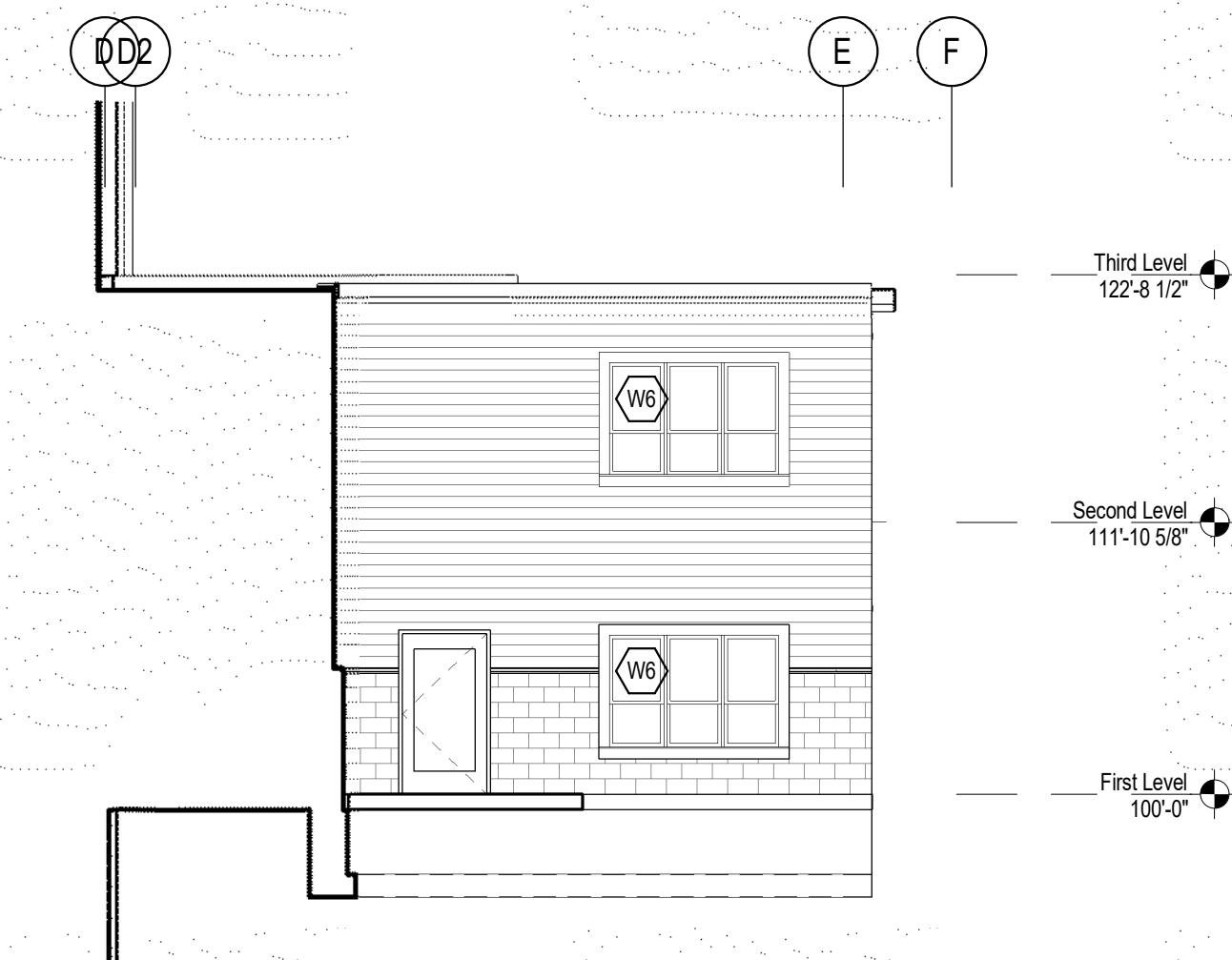
5 EXTERIOR ELEVATION OF LINK - AREA D (S)  
A3.4 1/8" = 1'-0"



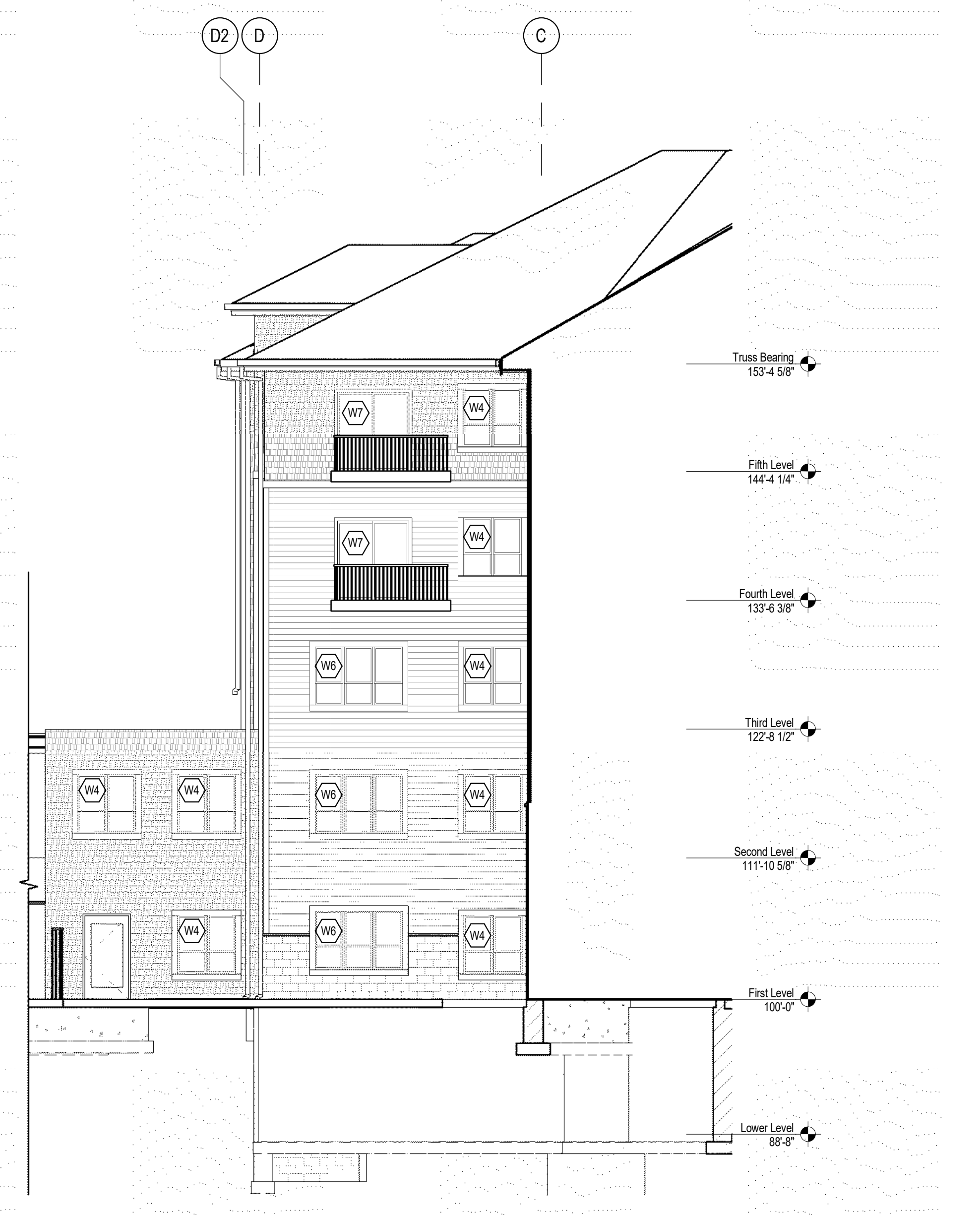
3 EXTERIOR ELEVATION 2- AREA D (E)  
A3.4 1/8" = 1'-0"

Keynote Legend

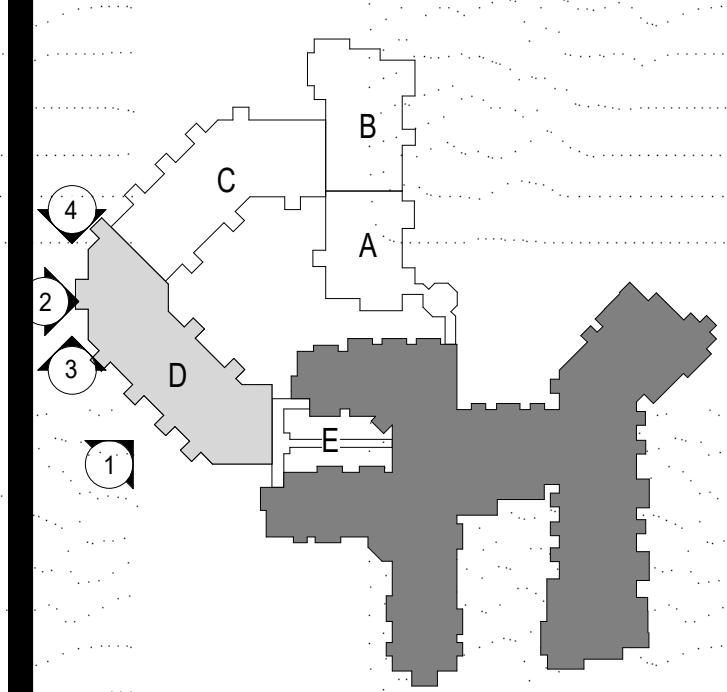
|    |  |
|----|--|
| 1  | ASPHALT SHINGLES - CLASS 'A'             |
| 8  | OUTLINE OF FOUNDATION                    |
| 10 | VINYL CLAD WINDOWS                       |
| 18 | FIBER CEMENTBOARD SHINGLE SIDING         |
| 19 | FIBER CEMENTBOARD LAP SIDING - COLOR TBD |
| 22 | 1X10 FIBER CEMENT TRIM - PT. COLOR TBD   |
| 25 | MANUFACTURED STONE SILL                  |
| 28 | DECORATIVE RAILING SYSTEM                |
| 31 | COLOR ROCKFACE CMU                       |
| 37 | LANDSCAPE BLOCK                          |



2 LINK ELEVATION- AREA D (S)  
A3.4 1/8" = 1'-0"

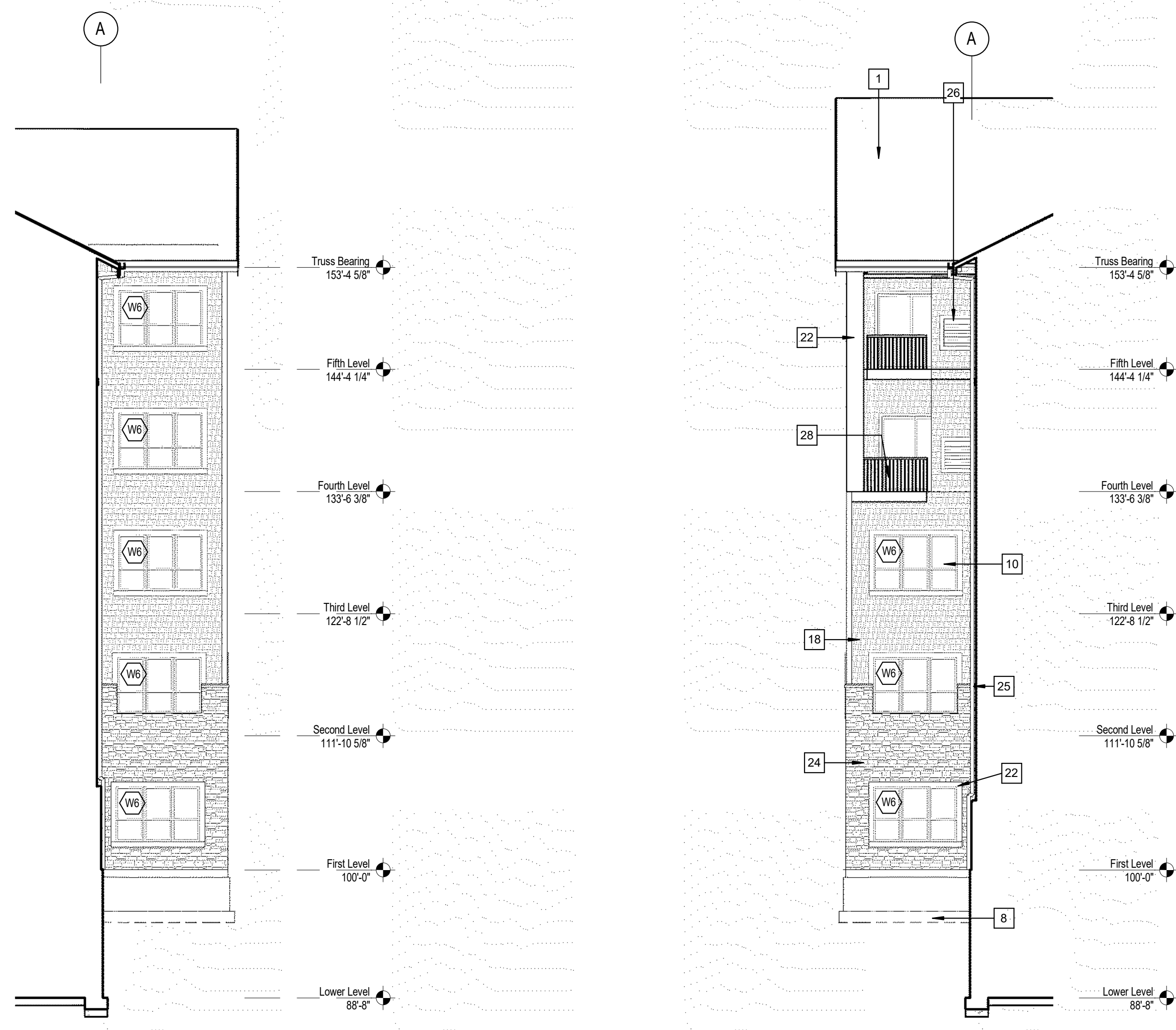


1 EXTERIOR ELEVATION- AREA D (N)  
A3.4 1/8" = 1'-0"



Notes on Plans:

|  |
|--|
|  |
|  |
|  |
|  |
|  |
|  |
|  |
|  |
|  |
|  |
|  |



**4** A3.5 **BUMP- AREA C (N)**  
1/8" = 1'-0"

**3** A3.5 **BUMP- AREA C (S)**  
1/8" = 1'-0"

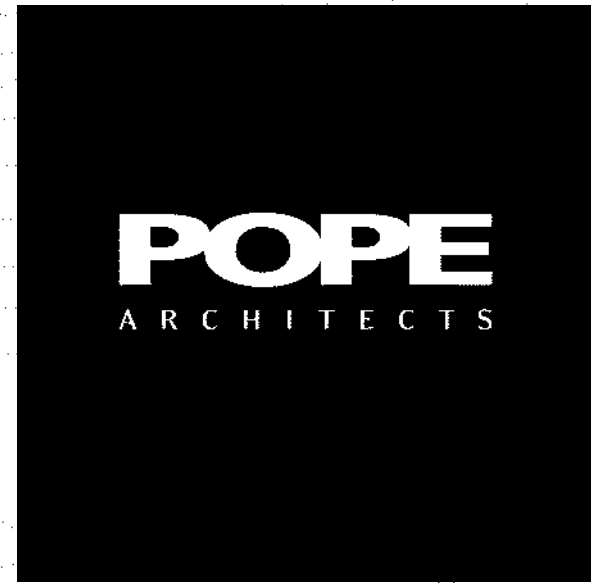
**2** A3.5 **EXTERIOR ELEVATION- AREA C (W)**  
1/8" = 1'-0"



**1** A3.5 **EXTERIOR ELEVATION- AREA D (SW)**  
1/8" = 1'-0"

**Keynote Legend**

|    |  |
|----|--|
| 1  | ASPHALT SHINGLES - CLASS 'A'             |
| 8  | OUTLINE OF FOUNDATION                    |
| 10 | VINYL CLAD WINDOWS                       |
| 18 | FIBER CEMENTBOARD SHINGLE SIDING         |
| 19 | FIBER CEMENTBOARD LAP SIDING - COLOR TBD |
| 20 | 1X6 FIBER CEMENT TRIM - PT. COLOR TBD    |
| 22 | 1X10 FIBER CEMENT TRIM - PT. COLOR TBD   |
| 24 | MANUFACTURED STONE VENEER                |
| 25 | MANUFACTURED STONE SILL                  |
| 26 | LOUVER - PT. COLOR TBD                   |
| 28 | DECORATIVE RAILING SYSTEM                |
| 31 | COLORLED ROCKFACE CMU                    |

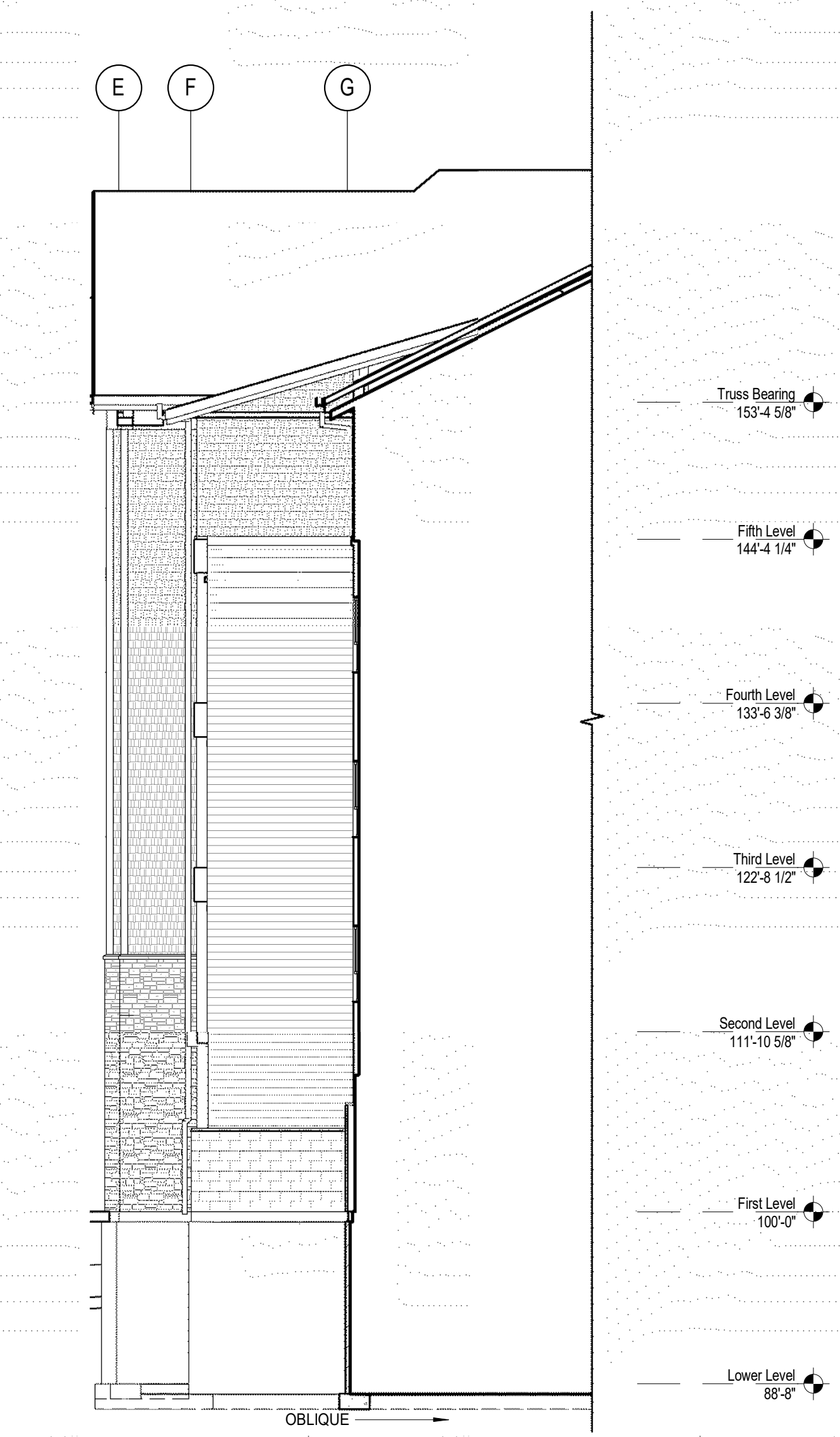


POPE ASSOCIATES, INC.  
1295 BANDANA BLVD N, SUITE 200  
ST. PAUL, MN 55108-2735  
(651) 642-9200 | FAX (651) 642-1101  
www.popearch.com

**BETHANY**  
LUTHERAN HOMES  
A GUNDERSEN HEALTH SYSTEM AFFILIATE

EAGLE CREST  
SOUTH ADDITION  
PHASE 2  
LA CROSSE, WI

|    |   |
|----|---|
| 1  | ASPHALT SHINGLES - CLASS 'A'                  |
| 3  | PREFIN. METAL FASCIA AND SOFFIT               |
| 8  | OUTLINE OF FOUNDATION                         |
| 10 | VINYL CLAD WINDOWS                            |
| 11 | CEMENT BD. WRAPPED COLUMN                     |
| 18 | FIBER CEMENTBOARD SHINGLE SIDING              |
| 19 | FIBER CEMENTBOARD LAP SIDING - COLOR TBD      |
| 20 | 1X6 FIBER CEMENT TRIM - PT. COLOR TBD         |
| 25 | MANUFACTURED STONE SILL                       |
| 28 | DECORATIVE RAILING SYSTEM                     |
| 31 | COLORLED ROCKFACE CMU                         |
| 32 | SEGMENTED COLORED BLOCK RETAINING WALL SYSTEM |
| 35 | INSULATED OVER HEAD DOOR                      |



**3**  
A3.6 BUMP ELEVATION- AREA B (S)  
1/8" = 1'-0"

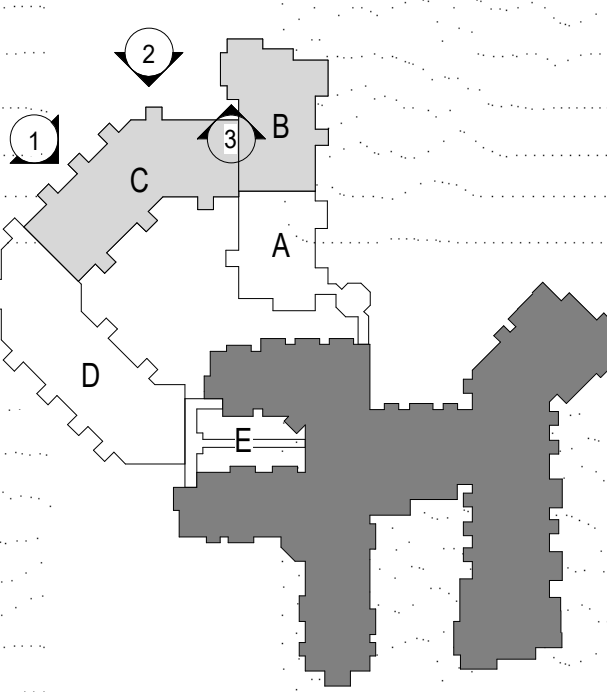


**2**  
A3.6 EXTERIOR ELEVATION- AREA C (N)  
1/8" = 1'-0"



**1**  
A3.6 EXTERIOR ELEVATION- AREA C (NW)  
1/8" = 1'-0"

CITY SUBMISSION  
CUP & PDD  
3/2/2018



EXTERIOR  
ELEVATIONS- AREAS  
B & C

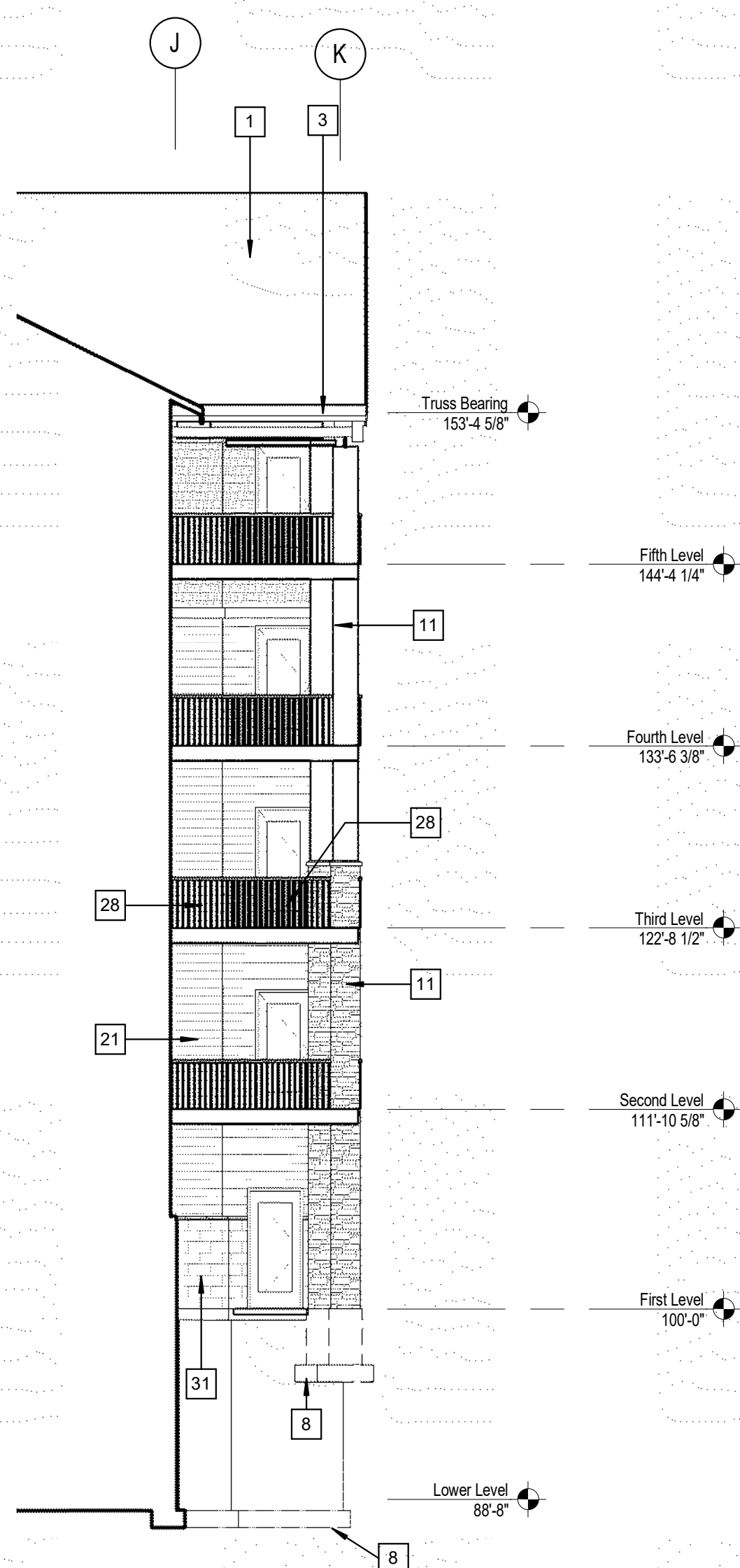
| NO. | DATE | DESCRIPTION |
|-----|------|-------------|
|     |      |             |
|     |      |             |
|     |      |             |
|     |      |             |
|     |      |             |
|     |      |             |
|     |      |             |
|     |      |             |
|     |      |             |
|     |      |             |

12728-17031  
MEJ  
TP

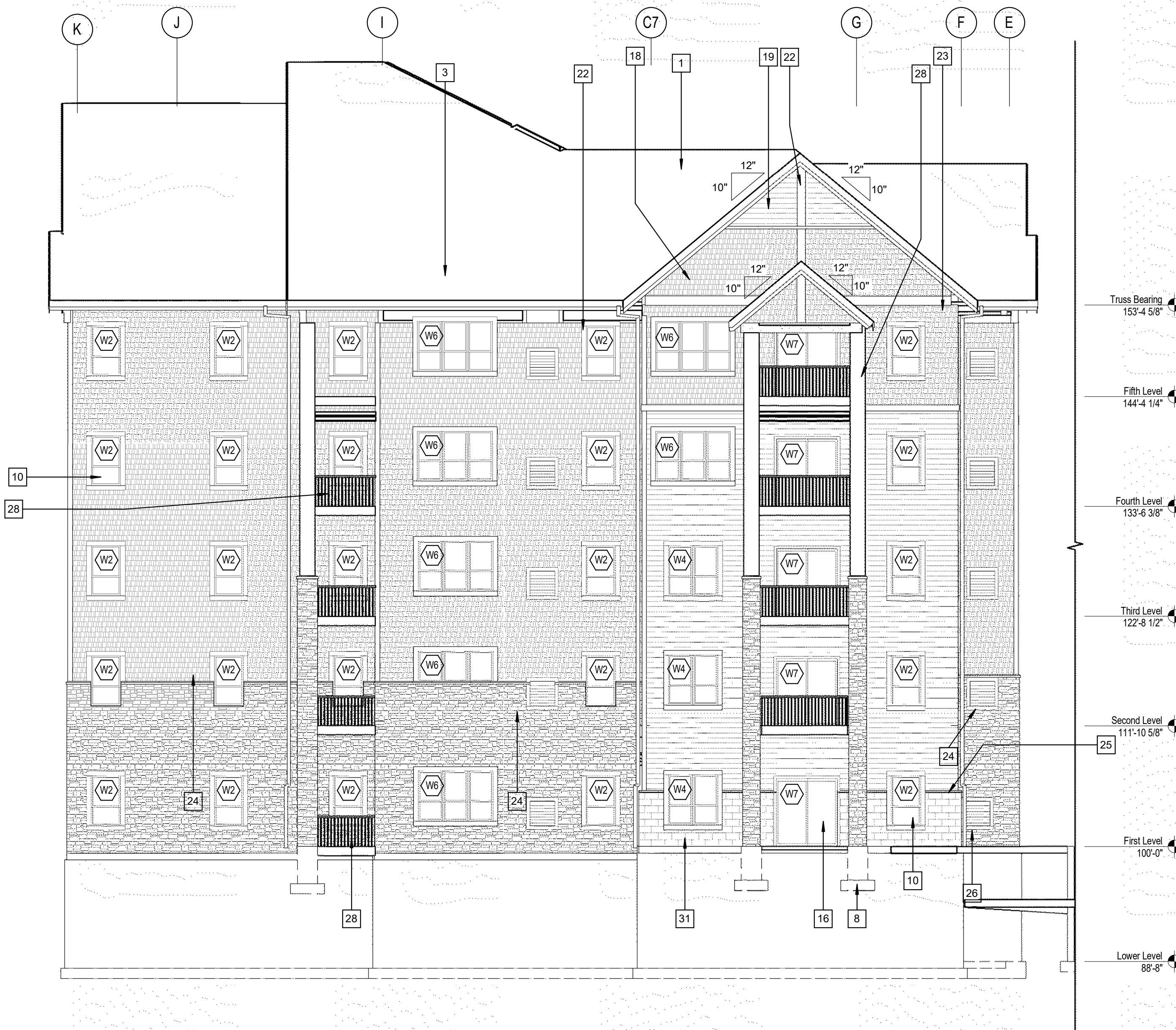
SHEET

**A3.6**

THE SHEET SCALE  
0' 12'  
C:\Reel Projects\17031 Eagle Crest\Control.plt, 12/22/2017 11:38:10 AM



**3**  
A3.7 **BUMP- AREA B (S)**  
1/8" = 1'-0"



**2**  
A3.7 **EXTERIOR ELEVATION- AREA B (N)**  
1/8" = 1'-0"



**1**  
A3.7 **EXTERIOR ELEVATION- AREA B (W)**  
1/8" = 1'-0"

**Keynote Legend**

- 1 ASPHALT SHINGLES - CLASS 'A'
- 3 PREFIN. METAL FASCIA AND SOFFIT
- 8 OUTLINE OF FOUNDATION
- 10 VINYL CLAD WINDOWS
- 11 CEMENT BD. WRAPPED COLUMN
- 16 SLIDING GLASS DOOR
- 18 FIBER CEMENTBOARD SHINGLE SIDING
- 19 FIBER CEMENTBOARD LAP SIDING - COLOR TBD
- 21 1X8 FIBER CEMENT TRIM - PT. COLOR TBD
- 22 1X10 FIBER CEMENT TRIM - PT. COLOR TBD
- 23 1X12 FIBER CEMENT TRIM - PT. COLOR TBD
- 24 MANUFACTURED STONE VENEER
- 25 MANUFACTURED STONE SILL
- 26 LOUVER - PT. COLOR TBD
- 28 DECORATIVE RAILING SYSTEM
- 31 COLORED ROCKFACE CMU

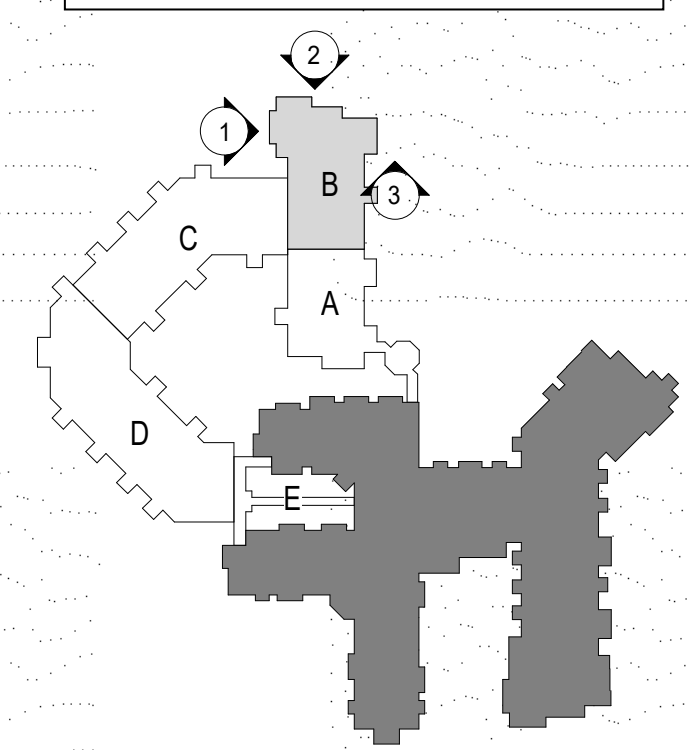
**POPE**  
ARCHITECTS

POPE ASSOCIATES, INC.  
1295 BANDANA BLVD N, SUITE 200  
ST. PAUL, MN 55108-2735  
(651) 642-9200 | FAX (651) 642-1101  
www.popearch.com

**BETHANY**  
LUTHERAN HOMES  
A GUNDERSEN HEALTH SYSTEM AFFILIATE

**EAGLE CREST  
SOUTH ADDITION  
PHASE 2  
LA CROSSE, WI**

CITY SUBMISSION  
CUP & PDD  
3/2/2018



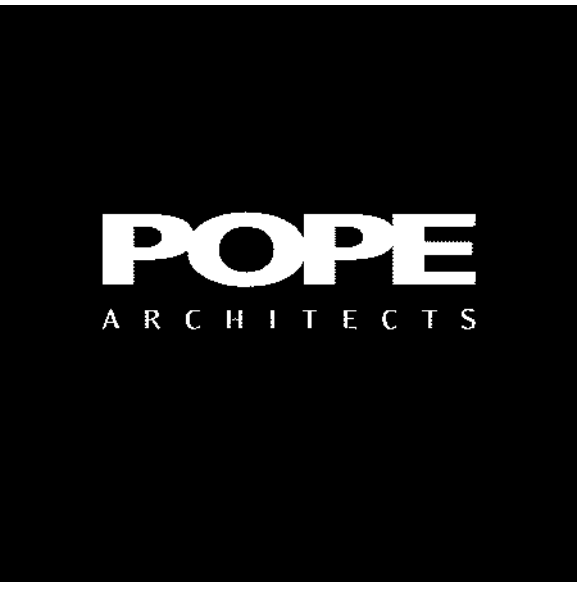
**EXTERIOR  
ELEVATIONS- AREA B**

As per Section:

|  |
|--|
|  |
|  |
|  |
|  |
|  |
|  |
|  |
|  |
|  |
|  |
|  |
|  |
|  |
|  |
|  |
|  |
|  |

Commission No. 12728-17031  
Prep by MEJ  
Checked by TP

SHEET  
**A3.7**

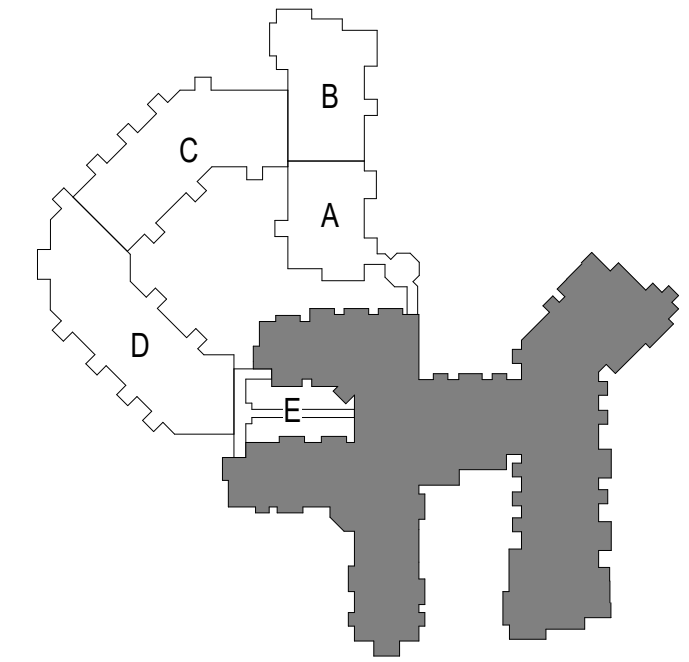


POPE ASSOCIATES, INC.  
1295 BANDANA BLVD N, SUITE 200  
ST. PAUL, MN 55108-2735  
(651) 642-9200 | FAX (651) 642-1101  
www.popearch.com

BETHANY  
LUTHERAN HOMES  
A GUNDERSEN HEALTH SYSTEM AFFILIATE

EAGLE CREST  
SOUTH ADDITION  
PHASE 2  
LA CROSSE, WI

CITY SUBMISSION  
CUP & PDD  
3/2/2018



OVERALL ROOF PLAN  
& DETAILS

Notes on Regions:

|  |  |
|--|--|
|  |  |
|  |  |
|  |  |
|  |  |
|  |  |
|  |  |
|  |  |
|  |  |
|  |  |
|  |  |
|  |  |

Commission No: 12728-17031  
Prepared by: MEJ  
Checked by: TP

SHEET

A4.1  
TRUE NORTH PROJECT NORTH  
0" 12" 24" 48" 96"  
AS SHOWN SCALE  
© 2018 Pope Associates, Inc. Eagle Crest 2, Central, 2/17, gnderson.n.s  
3/12/2018 11:12:26 AM

**ROOF PLAN NOTES**

- A. G.C. TO COORDINATE STORMWATER OUTFLOW WITH CIVIL AND OVERALL SITE PLAN.
- B. ICE AND WATERSHIELD TO BE INSTALLED PER MANUFACTURERS SPEC. AT ALL EXTERIOR WALLS 12 COURSES AT EAVES AND 1 COURSE MIN. AT VALLEYS- ALLOW MINIMUM 2'-0" TO THE INSIDE OF CONSTRUCTION.
- C. FLASH ALL ROOF BREAKS WEATHER TIGHT.
- D. ROOF SADDLES TO BE MINIMUM 4:12 PITCH.
- E. ALL TYPICAL OVERHANGS TO BE 24" U.N.O. & GABLE RAKES TO BE 16" U.N.O.
- F. TAPERED INSULATION: MIN. THICKNESS = 2" MAX. SLOPE = 14"/FT.
- G. VERIFY LOCATION OF MECHANICAL EQUIPMENT & WALKWAY PADS WITH MECHANICAL.
- H. SEE EXTERIOR ELEVATIONS & CIVIL FOR DOWNSPOUT LOCATIONS.

