

19-0487

REF 0+52
SEE L1 SHEET 1

0+54 EDGE OF CONC.
0+86 EDGE OF CONC.
0+98 EDGE OF CONC.
1+60 EDGE OF CONC.
1+62 PWR POLE

2+16 GAS MAIN
2+44 D/W
2+60 PWR POLE
3+22 GAS MAIN

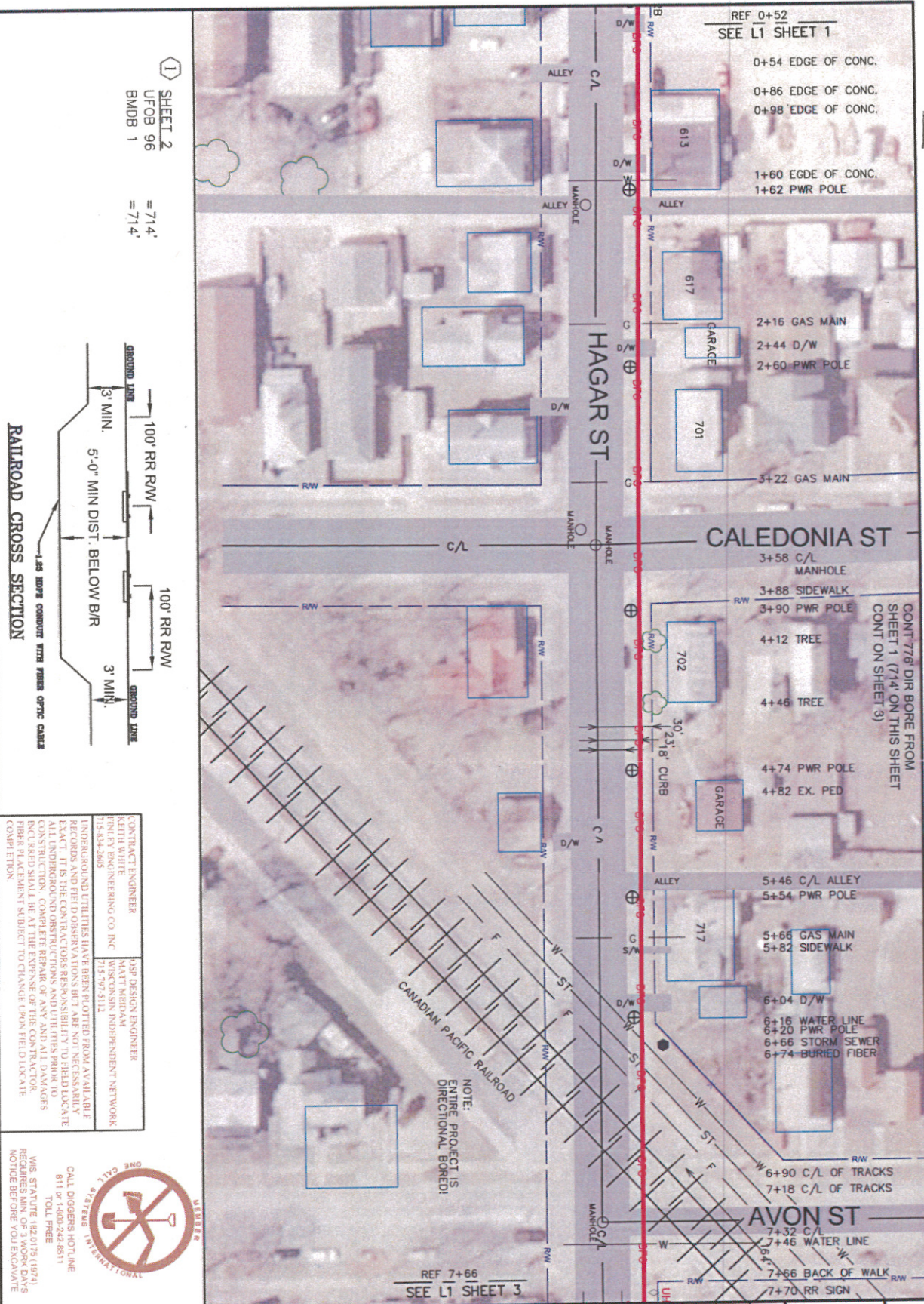
3+58 C/L
MANHOLE
3+88 SIDEWALK
3+90 PWR POLE
4+12 TREE
4+46 TREE

4+74 PWR POLE
4+82 EX. PED
5+46 C/L ALLEY
5+54 PWR POLE
5+66 GAS MAIN
5+82 SIDEWALK
6+04 D/W
6+16 WATER LINE
6+20 PWR POLE
6+66 STORM SEWER
6+74 BURIED FIBER

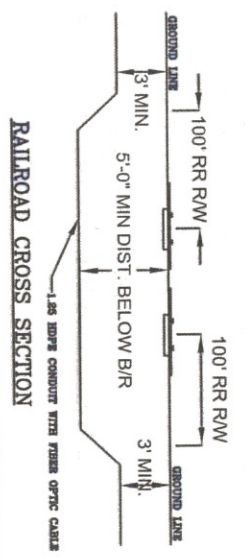
6+90 C/L OF TRACKS
7+18 C/L OF TRACKS
7+32 C/L
7+46 WATER LINE
7+66 BACK OF WALK
7+70 RR SIGN

CONT 776' DIR BORE FROM
SHEET 1 (714' ON THIS SHEET
CONT ON SHEET 3)

REF 7+66
SEE L1 SHEET 3



① SHEET 2
UFOB 96
BMDB 1
= 71.4'
= 71.4'



CONTRACT ENGINEER
KEITH WHITE
FRANK P. ENGINEERING CO INC
125-584-5000

ASST DESIGN ENGINEER
MATT MERRAN
FRANK P. INDEPENDENT NETWORK
315-792-5212

UNDERGROUND UTILITIES HAVE BEEN PLOTTED FROM AVAILABLE RECORDS AND FIELD OBSERVATIONS BUT NOT GUARANTEED TO BE COMPLETE. FIELD LOCATE AND VERIFY TO BE HELD LOCATE. CONTRACTOR SHALL BE RESPONSIBLE FOR VERIFYING THE LOCATION OF ALL UTILITIES PRIOR TO CONSTRUCTION. COMPLETE REPAIR OF ANY AND ALL DAMAGES INCURRED SHALL BE AT THE EXPENSE OF THE CONTRACTOR. FIBER PLACEMENT SUBJECT TO CHANGE UPON FIELD LOCATE COMPLETE.

CALL DIGGERS HOTLINE
811 or 1-800-242-8511
TOLL FREE

WIS. STATUTE 192.0179 (1974)
REQUIRES MIN. OF 3 WORK DAYS
NOTICE BEFORE YOU EXCAVATE

FINLEY ENGINEERING
INTERVIEW INTO EXISTENCE

REVISION	DATE
REV 1	06/07/13
REV 2	

ENGINEERING DATE
COMPLETED 06/07/13
REVISIONS
REV 1
REV 2

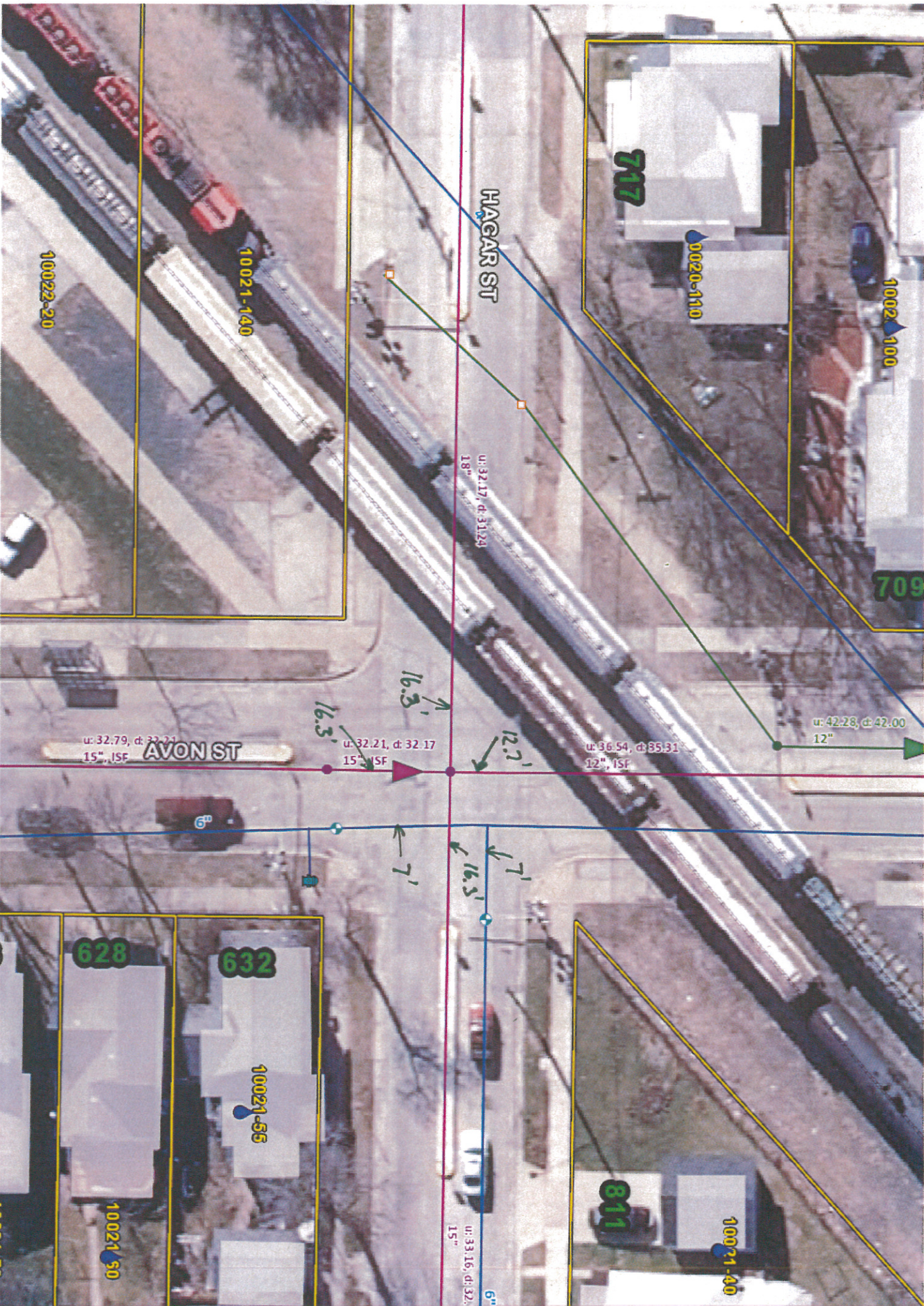
PROJECT DESCRIPTION:
REINHART FOODS
LA CROSSE, WI

PROJECT NUMBER: 01-064
WISCONSIN INDEPENDENT NETWORK

ROAD NAME:
HAGAR ST

CITY OF LACROSSE
SECTION 29
RANGE 7

L1 SHEET 2 OF 7



HAGAR ST

AVON ST

717

709

628

632

811

10022-20

10021-140

0020-110

1002-100

u: 32.79, d: 32.21
15", ISF

u: 32.21, d: 32.17
15", ISF

u: 36.54, d: 35.31
12", ISF

u: 42.28, d: 42.00
12"

u: 32.17, d: 31.29
18"

u: 33.16, d: 32.1
15"

10021-40

10021-55

10021-30

16.3'

12.2'

7.1'

16.5'

7.1'

6"

6"