

NOTE
CONTRACTOR IS TO VERIFY LOCATION OF ALL UTILITIES
PRIOR TO ANY CONSTRUCTION

SANITARY MANHOLE #1
48" DIAMETER
STA. 0+62
RIM 667.07
INV. N 656.77, 12"
INV. W 657.02, 10"
INV. SE 657.02, 10"

SANITARY MANHOLE #2
48" DIAMETER
STA. 0+66
RIM 667.01
INV. N 656.86, 10"
INV. S 656.81, 10"

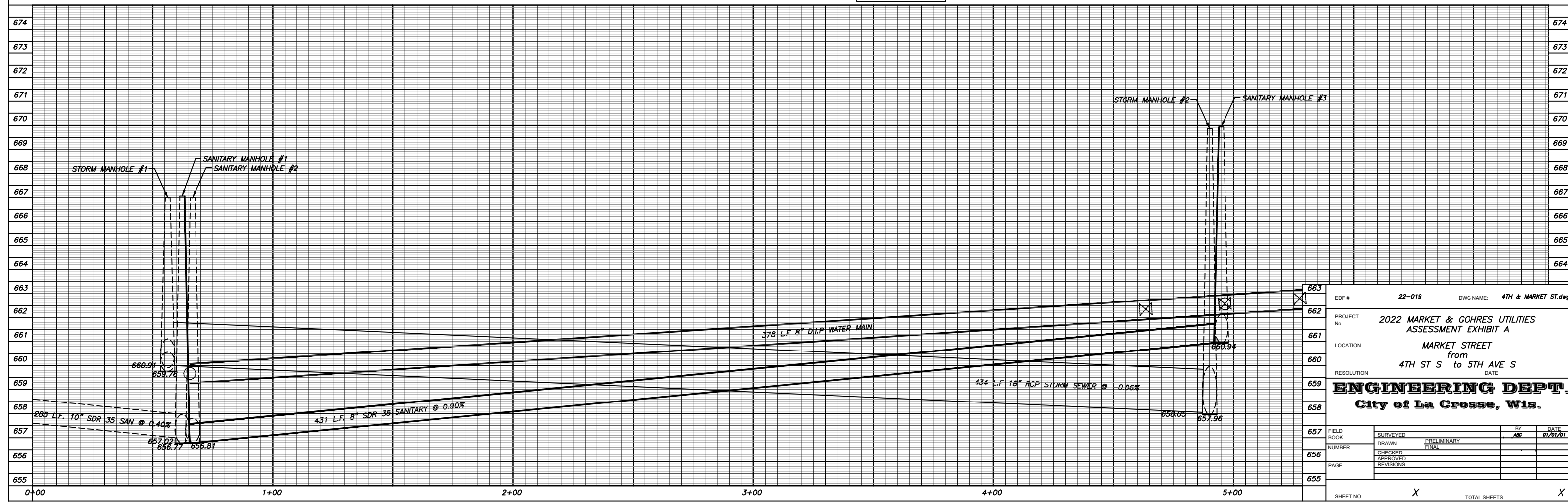
STORM MANHOLE #1
48" DIAMETER
STA. 0+56
RIM 667.01
INV. N 659.91, 12"
INV. E 660.01, 18"
INV. SW 659.76, 8"

UNKNOWN MANHOLE
48" DIAMETER
STA. 0+57
RIM 666.95
INV. SE 652.01, 8"
INV. NW 651.95, 8"

STORM MANHOLE #2
48" DIAMETER
STA. 4+90
RIM 669.86
INV. N 657.96, 20"
INV. S 657.96, 20"
INV. W 658.05, 18"
INV. NW HI 663.46, 8"
INV. SE HI 664.26, 8"
INV. SW HI 664.21, 8"

SANITARY MANHOLE #3
48" DIAMETER
STA. 4+94
RIM 669.94
INV. N 660.94, 12"
INV. S 660.94, 12"

BENCHMARKS
TOP NUT OF HYDRANT
MARKET ST & 4TH ST S 670.52
MARKET ST & 5TH AVE S 673.37



EDF #	22-019	DWG NAME:	4TH & MARKET ST.dwg
PROJECT No.	2022 MARKET & GOHRES UTILITIES ASSESSMENT EXHIBIT A		
LOCATION	MARKET STREET from 4TH ST S to 5TH AVE S		
RESOLUTION	DATE		
ENGINEERING DEPT.			
City of La Crosse, Wis.			
FIELD BOOK	SURVEYED	BY	DATE
NUMBER	DRAWN	PRELIMINARY	01/01/21
PAGE	CHECKED	FINAL	
	APPROVED		
	REVISIONS		
SHEET NO.	X	TOTAL SHEETS	X