

32' wide



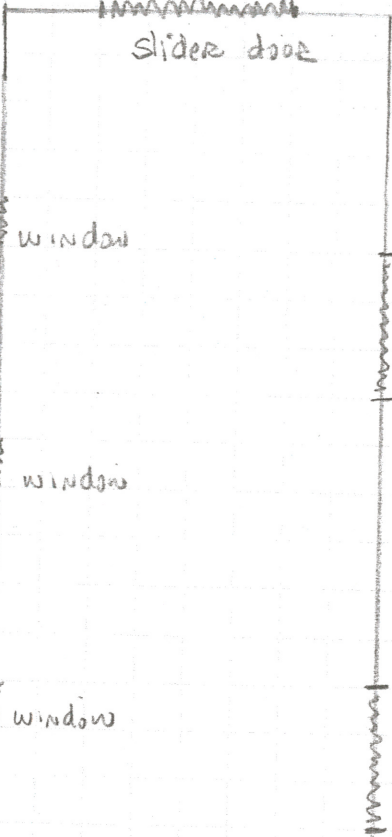
N

16" side walls.

machine shed, metal, w/
gravel floor 32' x 72'
over existing foundation

4' sections

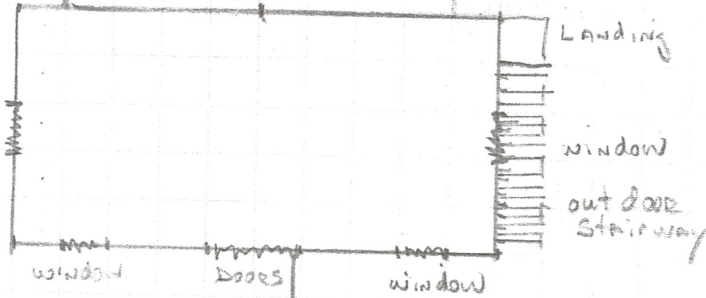
72' Long.



W ←

→ E

window.



office with bathroom
concrete floor 2 story
20' x 40'

82' building edge to center of
Boma Road.

BOMA ROAD.



S

1" = 300'

MANHOLE TO BACK OF FOUNDATION IS 279'



S. 1/2 - S. 1/2 - S.W. 1/4 - S.E. 1/4
SEC. 2-15-7

AMENDMENT
2-9-89
(MANHOLE)

ADDED
SEE COVENANT
166, 898, P. 277029

S. 1/2 - N.E. 1/4 - N.W. 1/4
SEC. 11-15-7

9TH AMENDMENT
C.C. RES. 8-9-84
(DELETED)

N.E. 1/4 - S.W. 1/4 -
N.E. 1/4 - N.W. 1/4
SEC. 11-15-7

6TH AMENDMENT
DELETED
Ord 9/13/84

N.E. 1/4 - N.W. 1/4 -
S.E. 1/4 - N.W. 1/4
SEC. 11-15-7

6TH AMENDMENT
DELETED
Ord 9/13/84

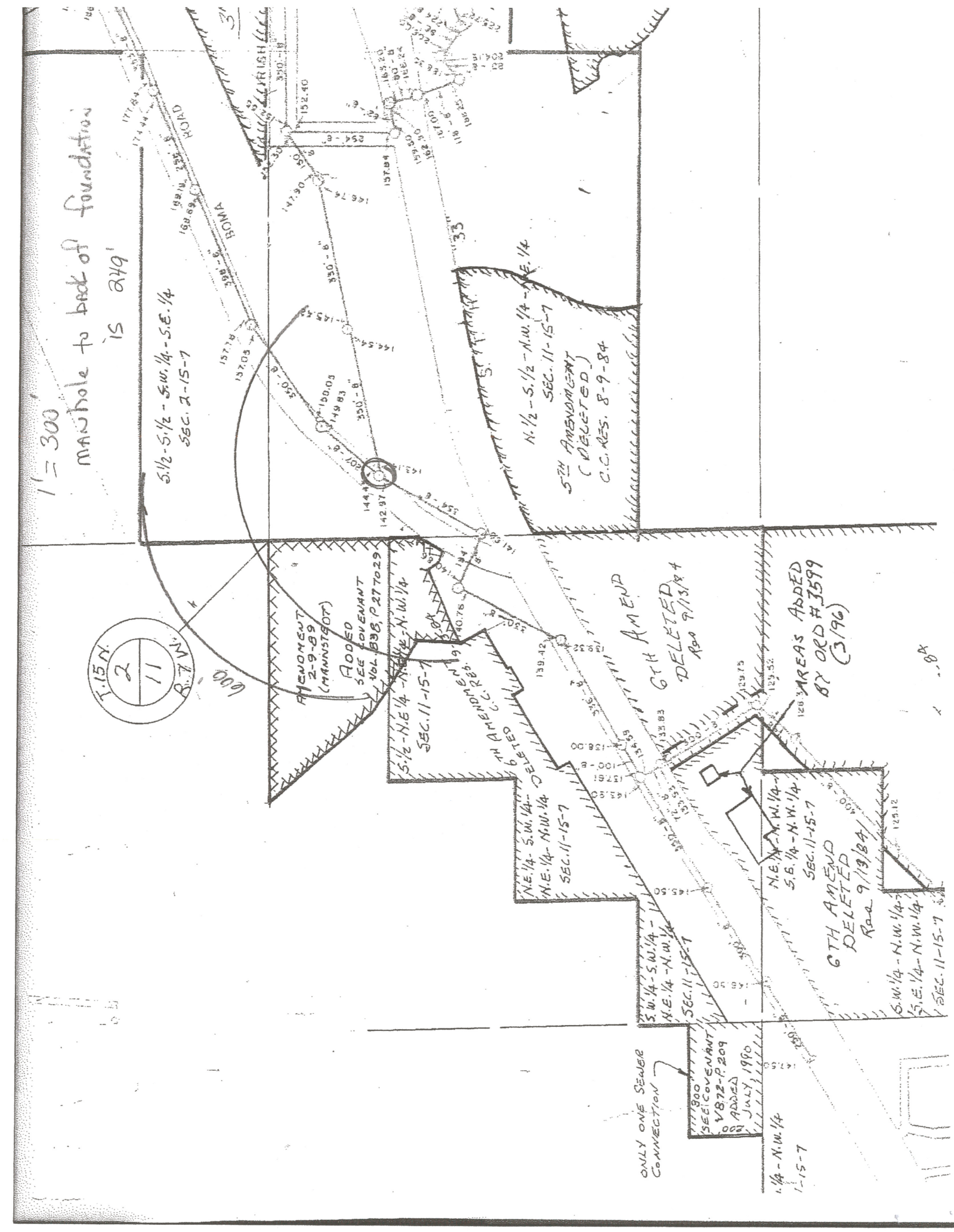
AREAS ADDED
BY ORD #3599
(3/96)

ONLY ONE SEWER
CONNECTION

11900
SEE COVENANT
1872-P. 209
ADDED
JULY, 1990

S.W. 1/4 - N.W. 1/4
SEC. 11-15-7

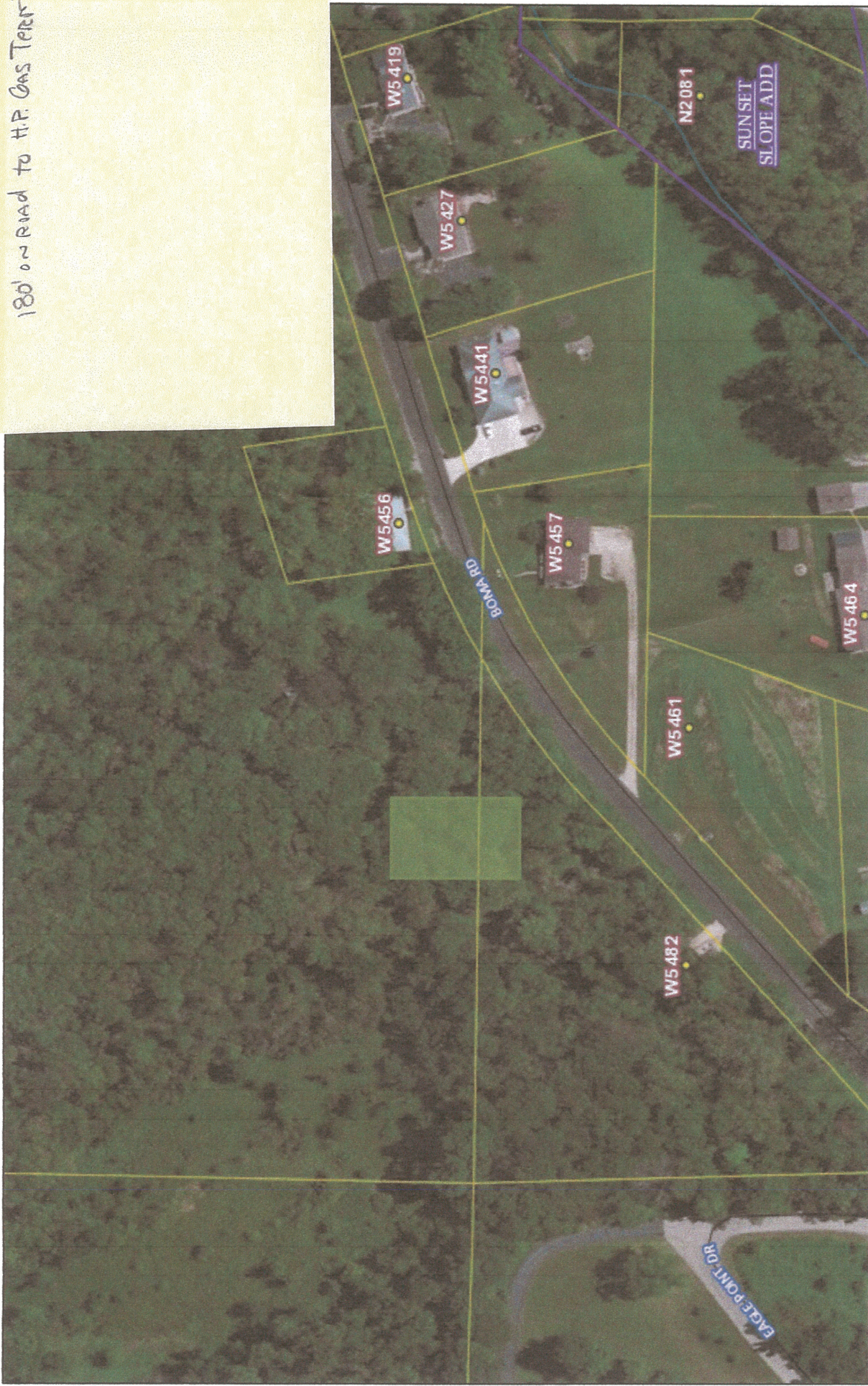
S.W. 1/4 - N.W. 1/4 -
S.E. 1/4 - N.W. 1/4
SEC. 11-15-7



ArcGIS Online Web Map

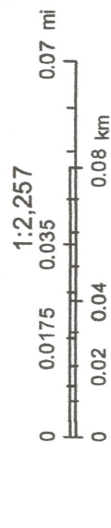
Shed dimensions 11x21

Location, 120' APPEX to the ROAD fence line
180' on ROAD to H.P. GAS TERTI, NA



February 8, 2017

- County Limits
- Subdivision Boundary Outline
- Federal & State Roads
- County & Town Roads
- Railroad Center Lines
- Burlington Northern Santa Fe
- + CP Rail
- + Spur Track
- . Address Labels



La Crosse County, WI
La Crosse County

