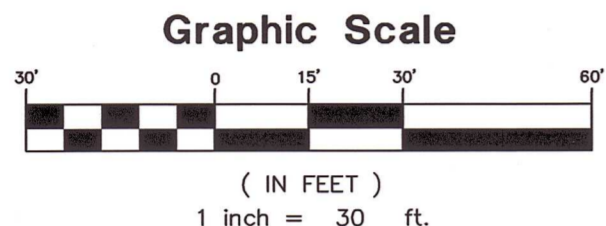
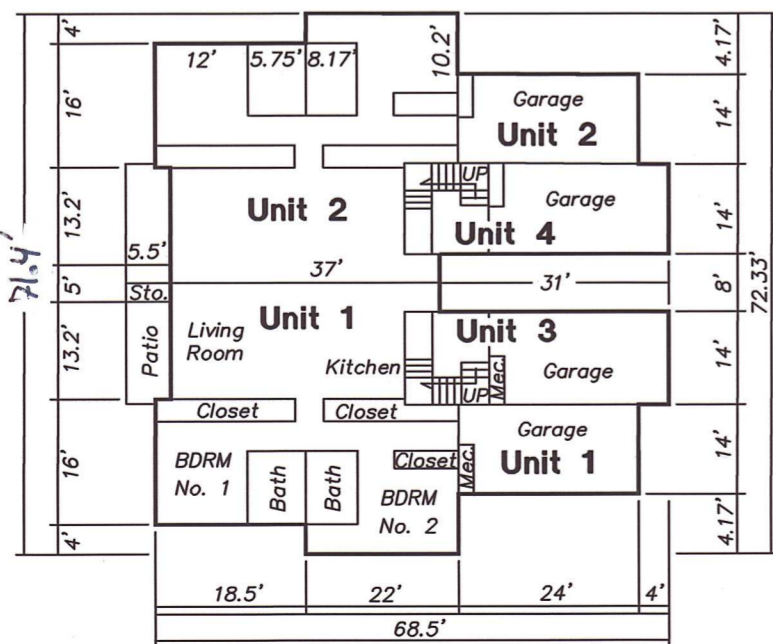
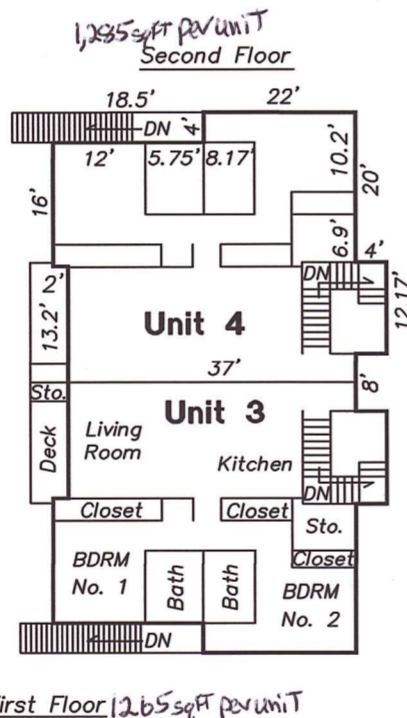


Received for recording this ____ Day of _____, 2022
 at ____ O'clock ____ m and filed as Document # _____
 in Volume _____ of Plats on Page _____.

Robin L. Kadrmias, Register of Deeds



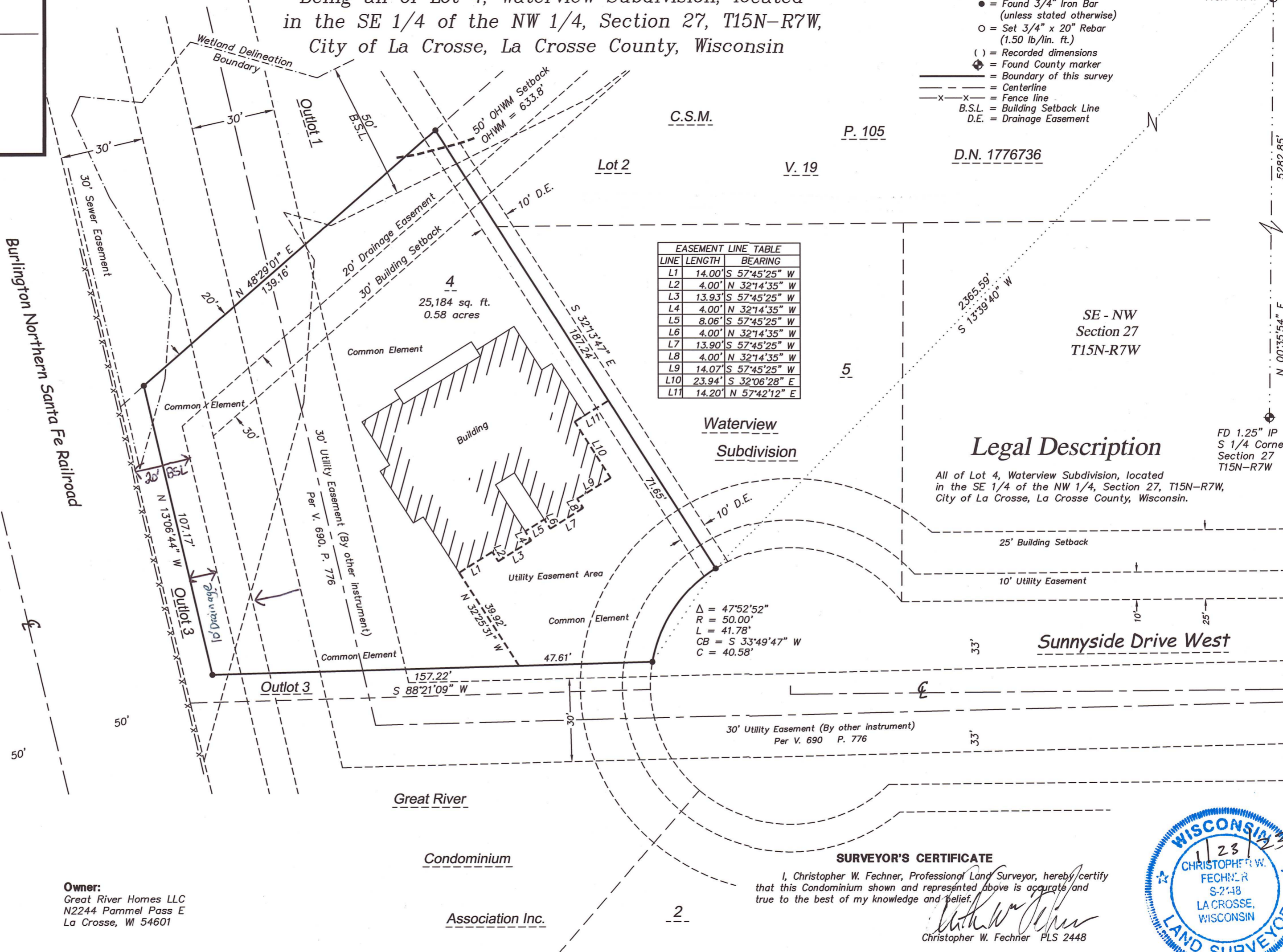
Bearing Basis: The La Crosse County Coordinate System.
 Referenced to the (WCCS) NAD 83 (2011) Adjustment.
 Referenced to the North-South 1/4 line of
 Section 27, T15N-R7W: N 00°35'54" E



Owner:
 Great River Homes LLC
 N2244 Pammel Pass E
 La Crosse, WI 54601

Great River Condominium II

Being all of Lot 4, Waterview Subdivision, located
 in the SE 1/4 of the NW 1/4, Section 27, T15N-R7W,
 City of La Crosse, La Crosse County, Wisconsin



LINE	LENGTH	BEARING
L1	14.00'	S 57°45'25" W
L2	4.00'	N 32°14'35" W
L3	13.93'	S 57°45'25" W
L4	4.00'	N 32°14'35" W
L5	8.06'	S 57°45'25" W
L6	4.00'	N 32°14'35" W
L7	13.90'	S 57°45'25" W
L8	4.00'	N 32°14'35" W
L9	14.07'	S 57°45'25" W
L10	23.94'	S 32°06'28" E
L11	14.20'	N 57°42'12" E

Δ = 47°52'52"
 R = 50.00'
 L = 41.78'
 CB = S 33°49'47" W
 C = 40.58'

- LEGEND**
- = Found 3/4" Iron Bar (unless stated otherwise)
 - = Set 3/4" x 20" Rebar (1.50 lb/lin. ft.)
 - () = Recorded dimensions
 - ⊕ = Found County marker
 - = Boundary of this survey
 - — — = Centerline
 - x-x- = Fence line
 - B.S.L. = Building Setback Line
 - D.E. = Drainage Easement

D.N. 1776736

Legal Description

All of Lot 4, Waterview Subdivision, located
 in the SE 1/4 of the NW 1/4, Section 27, T15N-R7W,
 City of La Crosse, La Crosse County, Wisconsin.

SURVEYOR'S CERTIFICATE

I, Christopher W. Fechner, Professional Land Surveyor, hereby certify
 that this Condominium shown and represented above is accurate and
 true to the best of my knowledge and belief.

Christopher W. Fechner
 Christopher W. Fechner PLS 2448

917 4th Street S.
 #917
 LaCrosse, WI 54601



FD Stone
 N 1/4 Corner
 Section 27
 T15N-R7W

FD 1.25" IP
 S 1/4 Corner
 Section 27
 T15N-R7W