

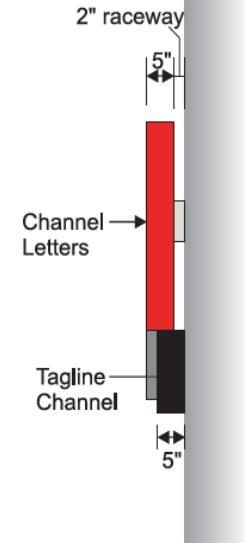
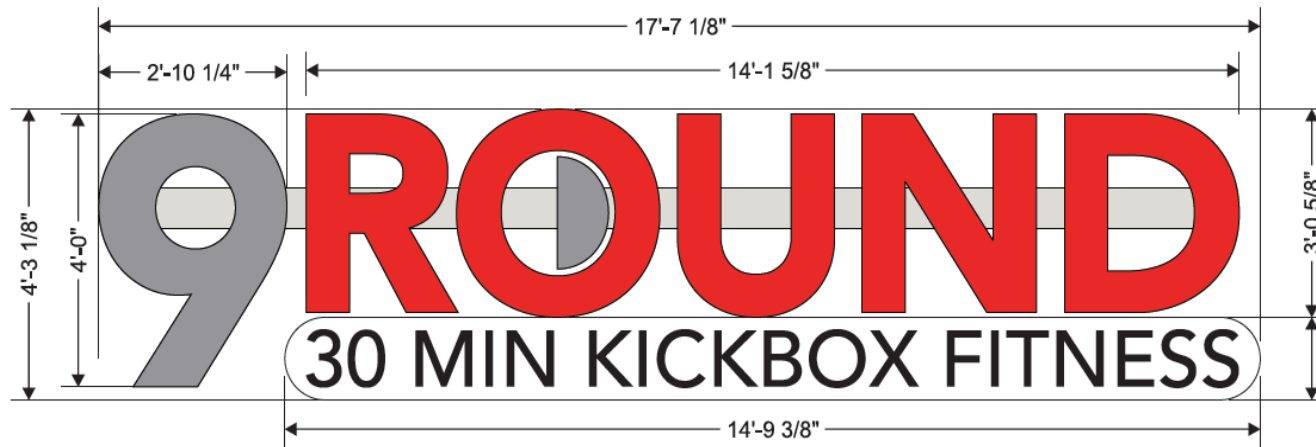
Channel Letters

Scale: 3/8" = 1'-0"

SQ. FOOTAGE: 74.95

Side View

Scale: 3/8" = 1'-0"



Internally Illuminated Channel Letters: "9 Round"

Faces: "9" & Half circle in "O"- 3/16" clear plex covered with 3M Trans. 3630-121 Silver Gray vinyl.

"Round"- 3/16" clear plex covered with 3M Trans. 3630-33 Red vinyl.

Trim: "9" & Half circle in "O"- 1" Gray Jewelite to match faces.

"Round"- 1" Red Jewelite to match faces.

Returns: "9" & Half circle in "O"- 5" deep, paint PMS 877, satin finish.

"Round"- 5" deep, paint PMS 1797 Red, gloss finish.

Inside Cans: paint white.

Lighting: "9" & Half circle in "O"- White LEDs.

"Round"- Red LEDs.

Raceway: 7" x 2" painted to match fascia.

Internally Illuminated Channel Tagline:

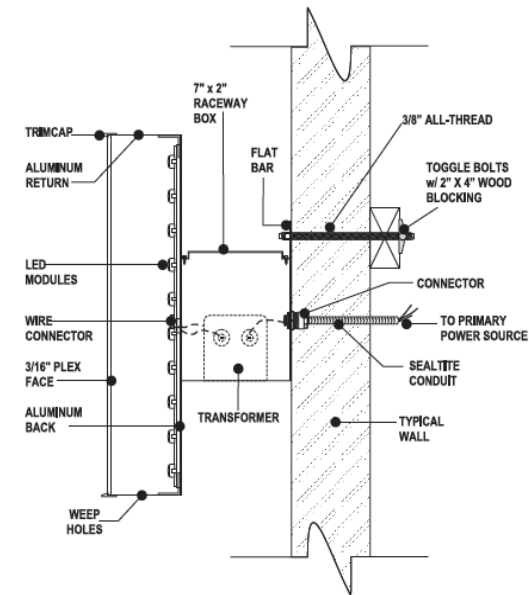
"30 MIN KICKBOX FITNESS"

Faces: 3/16" white plex, with black vinyl copy.

Trim: 1" Black Jewelite.

Returns: 5" deep, paint gloss black.

Lighting: White LEDs.



| |
|-----------------|
| CUSTOMER |
| SALES |
| PROJECT MANAGER |
| PRODUCTION |
| INSTALLATION |

KSI KNIGHT SIGN INDUSTRIES, INC.
5959 knight ave. tuscaloosa, alabama 35405 phone: 205-345-5242 toll free: 800-356-3051
www.knightsign.com

July 9, 2014
9 Round
Various Locations

Salesperson: J. Harcrow
Design: J. Tippett
revision: 000 by: ----

188250

| | |
|---------------------------------|---|
| Conduit | 3/8" Alum. flex conduit or 1/2" seal light type LFMC conduit. |
| Handybox | Raco listed 731A |
| Handybox cover | Raco listed 731A |
| Switch | Transco model 1000 |
| 12 gauge wire black-white-green | Encore wire E156679 |
| 18 Gauge | Rupe #3164364 |
| Wire nut | Ideal Twister LT 340 |
| Wire nut | Ideal 30-71 71B |
| Transformer Box | TC18TOW UL 876 listed westrim |
| LED | E 242980 SL5-3-K |
| LED power supply | Alterson CV125-120-277V Class 2 |
| Connectors Flux & Sealight | Pico listed 8C32 |
| Ballast | ESB 432-14 & ESB 648-46 120 or 277 volt 3amp UL type 2/CSA |
| Bulb | GE HG800 Fluorescent Lamps |
| Lexan | Sheffield Plastic Polycarbonate Sheet Makrolon 389 Makrolon SL110721D |
| Bulb Holders | Kultra #553, #592, #530, 1k - 12" UL ALI, #60W-600V/1000V |



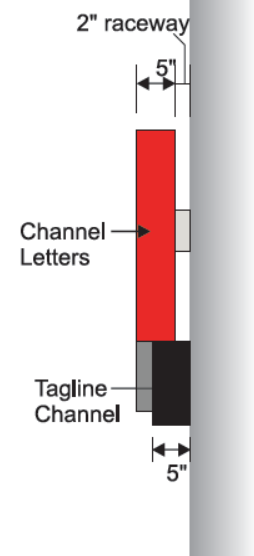
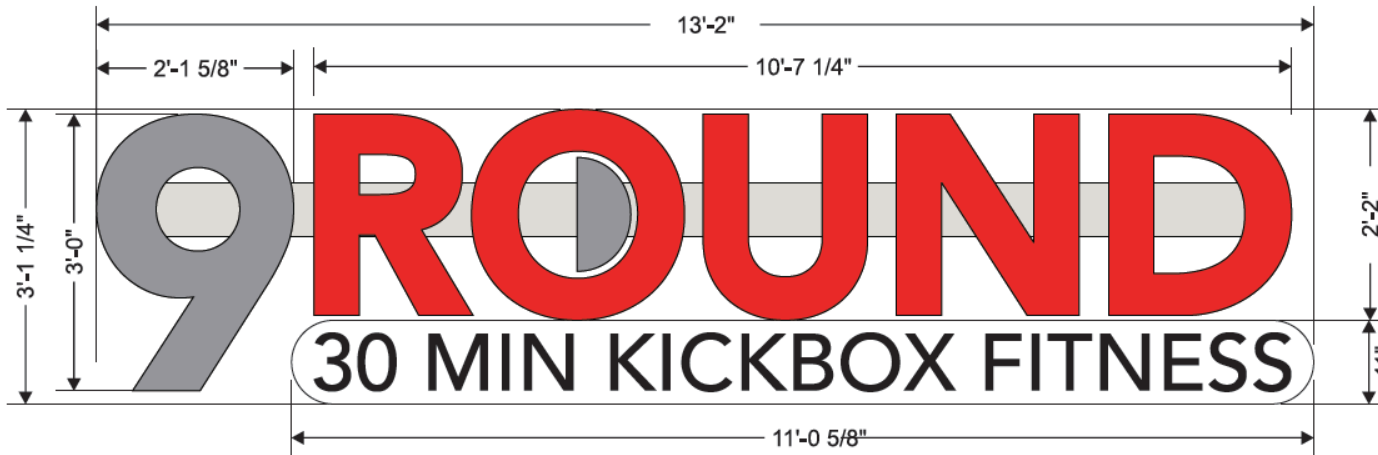
Channel Letters

Scale: 1/2" = 1'-0"

SQ. FOOTAGE: 74.95

Side View

Scale: 1/2" = 1'-0"



Internally Illuminated Channel Letters:

"9 Round"

Faces: "9" & Half circle in "O"- 3/16" clear plex covered with 3M Trans. 3630-121 Silver Gray vinyl.

"Round"- 3/16" clear plex covered with 3M Trans. 3630-33 Red vinyl.

Trim: "9" & Half circle in "O"- 1" Gray Jewelite to match faces.

"Round"- 1" Red Jewelite to match faces.

Returns: "9" & Half circle in "O"- 5" deep, paint PMS 877, satin finish.

"Round"- 5" deep, paint PMS 1797 Red, gloss finish.

Inside Cans: paint white.

Lighting: "9" & Half circle in "O"- White LEDs.

"Round"- Red LEDs.

Raceway: 7" x 2" painted to match fascia.

Internally Illuminated Channel Tagline:

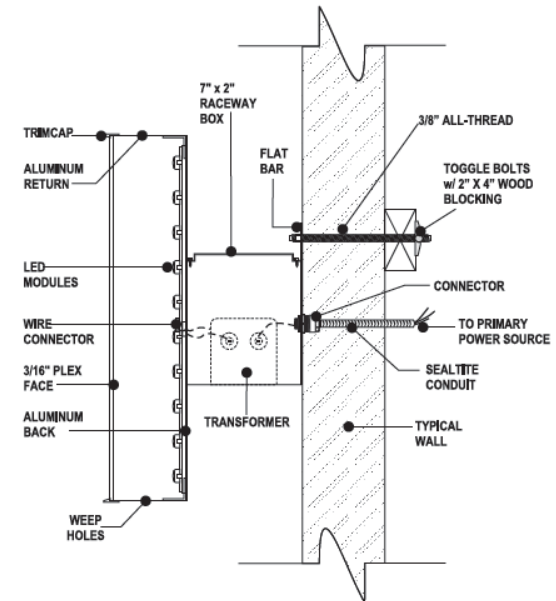
"30 MIN KICKBOX FITNESS"

Faces: 3/16" white plex, with black vinyl copy.

Trim: 1" Black Jewelite.

Returns: 5" deep, paint gloss black.

Lighting: White LEDs.



| |
|-----------------|
| CUSTOMER |
| SALES |
| PROJECT MANAGER |
| PRODUCTION |
| INSTALLATION |

KSI KNIGHT SIGN INDUSTRIES, INC.
 5959 knight ave. tuscaloosa, alabama 35405 phone: 205-345-5242 toll free: 800-356-3051
www.knightsign.com

July 11, 2014
 9 Round
 Various Locations

Salesperson: J. Harcrow
 Design: J. Tippett
 revision: 000 by: ---

188252

| | |
|-----------------------------------|--|
| Conduit | 3/8" Alum. flex conduit or 1/2" seal light type LFMC conduit. |
| Handybox | Raco listed 731A |
| Handybox cover | Raco listed 731A |
| Switch | Transco model 1000 |
| 12gauge wire black- white - green | Encore wire E156879 |
| 18-2 wire | Rohs #3164364 |
| Wire nut | Ideal Twister LT 340 |
| Wire nut | Ideal 30-71 71B |
| Transformer Box | TC181TOW UL 879 listed west/rm |
| LEDs | E 242965 SLS-3-X |
| LED power supply | Atlanson CV125-120-277V Class 2 |
| Connectors Flex & Sealight | Peco listed 6C32 |
| Ballast | ESB 432-14 & ESB 848-46 120 or 277 volt 3amp UL type 2/C5A |
| Bulb | GE HGB00 Fluorescent Lamps |
| Lexan | Sheffield Plastic Polycarbonate Sheet Makrolon 389 Makrolon SL1107121D |
| Bulb Holders | Kulika #553, #562, #530, 1k - 12" UL ALL 660W-600V/1000V |



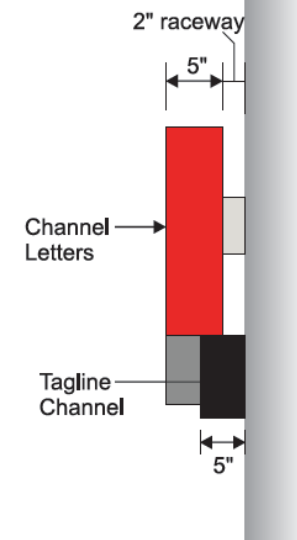
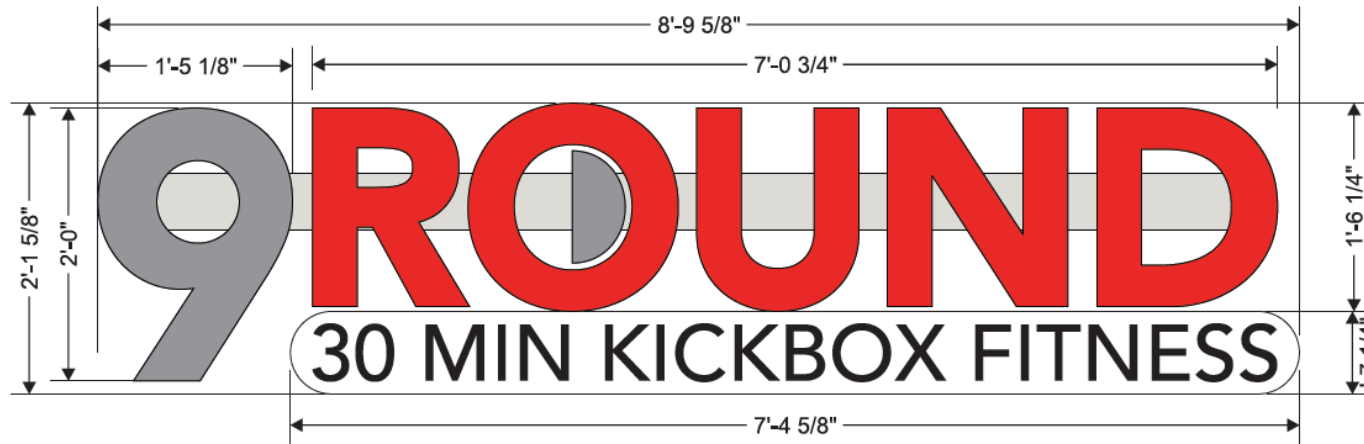
Channel Letters

Scale: 3/4" = 1'-0"

SQ. FOOTAGE: 18.80

Side View

Scale: 3/4" = 1'-0"



Internally Illuminated Channel Letters:
"9 Round"

Faces: "9" & Half circle in "O"- 3/16" clear plex covered with 3M Trans. 3630-121 Silver Gray vinyl.

"Round"- 3/16" clear plex covered with 3M Trans. 3630-33 Red vinyl.

Trim: "9" & Half circle in "O"- 1" Gray Jewelite to match faces.

"Round"- 1" Red Jewelite to match faces.

Returns: "9" & Half circle in "O"- 5" deep, paint PMS 877, satin finish.

"Round"- 5" deep, paint PMS 1797 Red, gloss finish.

Inside Cans: paint white.

Lighting: "9" & Half circle in "O"- White LEDs.

"Round"- Red LEDs.

Raceway: 5" x 2" painted to match fascia.

Internally Illuminated Channel Tagline:

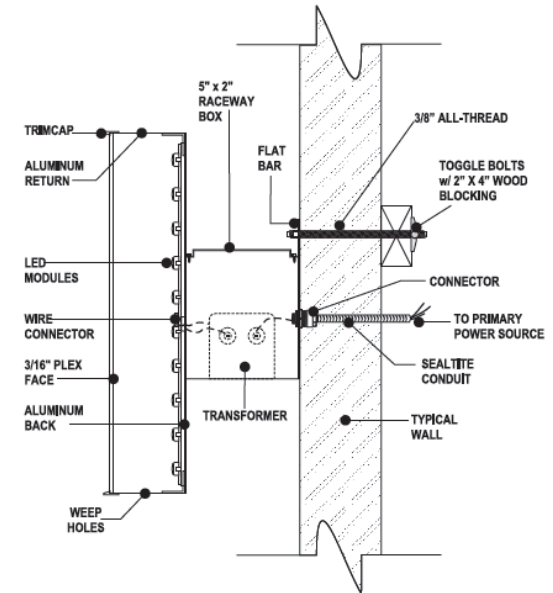
"30 MIN KICKBOX FITNESS"

Faces: 3/16" white plex, with black vinyl copy.

Trim: 1" Black Jewelite.

Returns: 5" deep, paint gloss black.

Lighting: White LEDs.



| | |
|-----------------|--|
| CUSTOMER | |
| SALES | |
| PROJECT MANAGER | |
| PRODUCTION | |
| INSTALLATION | |

KSI KNIGHT SIGN INDUSTRIES, INC.
5959 knight ave. tuscaloosa, alabama 35405 phone: 205-345-5242 toll free: 800-356-3051
www.knightsign.com

July 9, 2014
9 Round
Various Locations

Salesperson: J. Harcrow
Design: J. Tippett
revision: 000 by: ----

188251

| | |
|--------------------------------|---|
| Conduit | 3/8" Alum. Box conduit or 1/2" seal light type LFMC conduit. |
| Handybox | Raco listed 731A |
| Handybox cover | Raco listed 731A |
| Switch | Transco model 1000 |
| 12gauge wire black-white-green | Encore wire E156679 |
| 18g wire | Rohm #3164364 |
| Wire nut | Ideal Twister LL340 |
| Wire nut | Ideal 30-71 71B |
| Transformer Box | TC18TOW UL 879 listed westrim |
| LED | E 242985 SL5-3-X |
| LED power supply | Allerion CV125-120-277V Class 2 |
| Connectors Plug & Sealight | Peco listed 6C32 |
| Ballast | ESB 432-14 & ESB 848-46 120 or 277 volt 3amp UL type 2/CSA |
| Bulb | GE HGB00 Fluorescent Lamps |
| Lexan | Sheffield Plastic Polycarbonate Sheet Makrolon 389 Makrolon SL1107121 |
| Bulb Holders | Kulite #593, #592, #530.1k - 12" UL ALI 640W-600V1000V |

