

Maintenance Building

(2) extg 4" conduit

HH

New 2" conduit
75' to south
60' east across east ave

Typical access hole
20" metal cylinder

(2) extg 2" conduit
Typical on east sidewalk
Along East Ave

East Ave

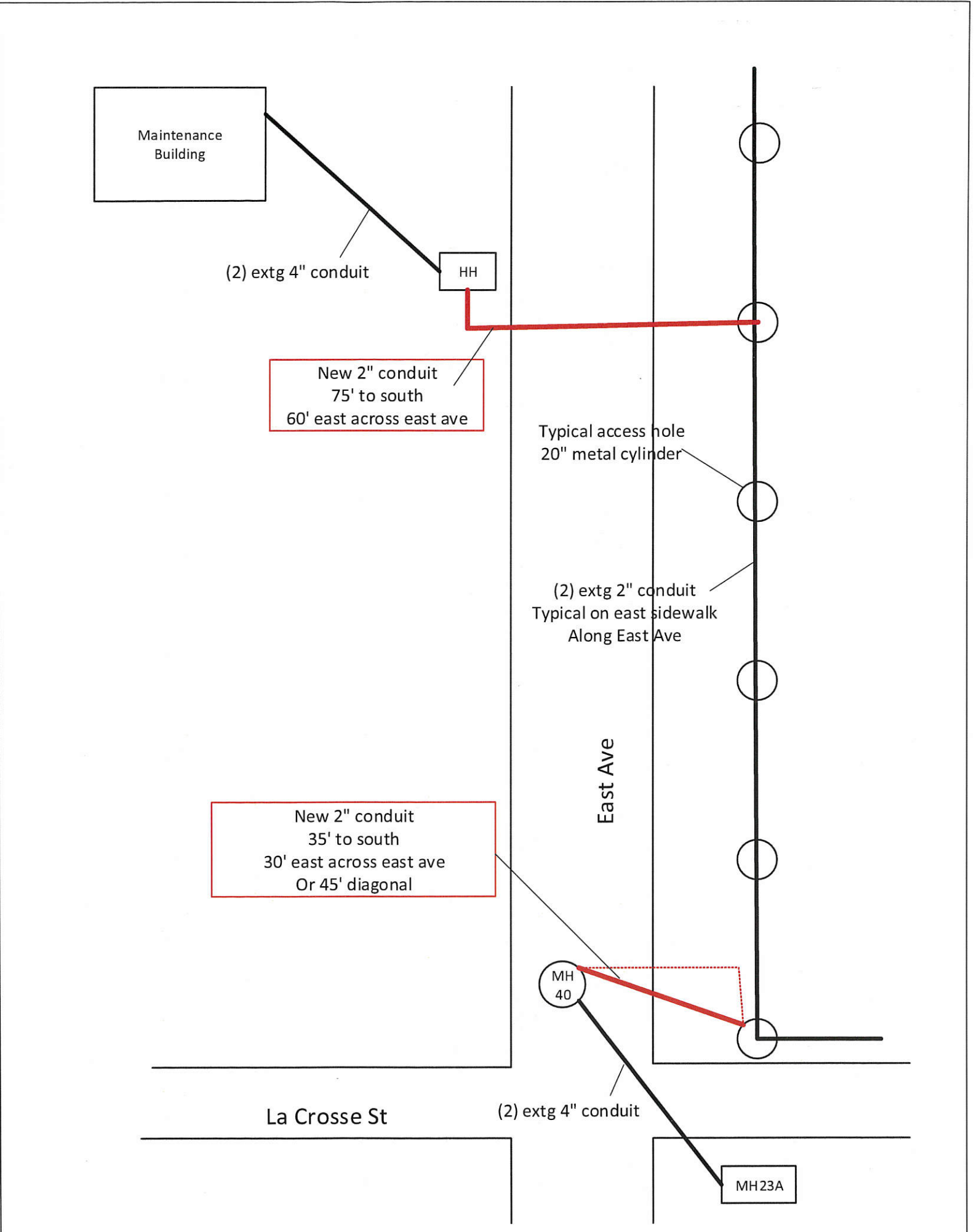
New 2" conduit
35' to south
30' east across east ave
Or 45' diagonal

MH
40

La Crosse St

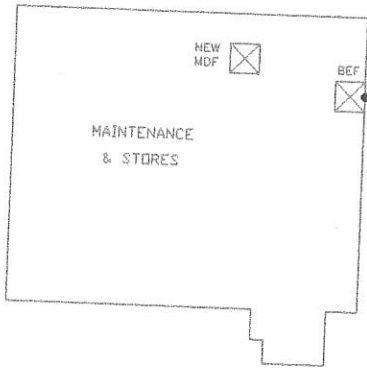
(2) extg 4" conduit

MH23A



NORTH
CAMPUS
BUILDING

LANDSCAPE
SERVICES



4"x4" HANDHOLE

NEW 2" CONDUIT BETWEEN EXISTING HAND HOLES.

PROPOSED FIBER ROUTE TO MAINTENANCE BUILDING.

TO CTW MH#40
APPROX. 1' W OF CURB

2" TO CITY
WATER WORKS

2" HH ON
150'-160' CENTERS
DOWN EAST AVENUE

PROVIDE NEW 2" CONDUIT BETWEEN EXISTING
MANHOLE 40 AND EXISTING HAND HOLE.

TO MAINTENANCE
BUILDING & STORES

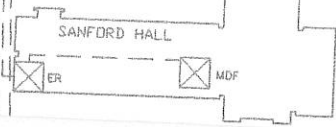
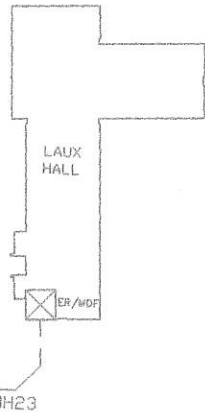
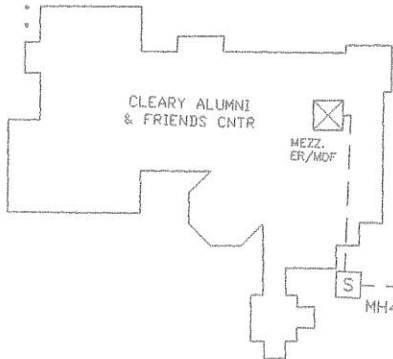
CTW
MH#40

(2)2" C

HH

HH

HH



CAMPUS POLICE