

SCALE: 1"=20' H  
1"= 2' V

ELEVATIONS SHOWN  
ARE NAVD 1988

**NOTE**  
CONTRACTOR IS TO VERIFY LOCATION OF ALL UTILITIES PRIOR TO ANY CONSTRUCTION.  
LOCATIONS OF UTILITIES SHOWN ON PLANS ARE APPROXIMATE.  
CONTRACTOR TO INSTALL AND MAINTAIN INLET PROTECTION PER DETAIL  
CITY OF LACROSSE TO SUPPLY ALL CASTINGS

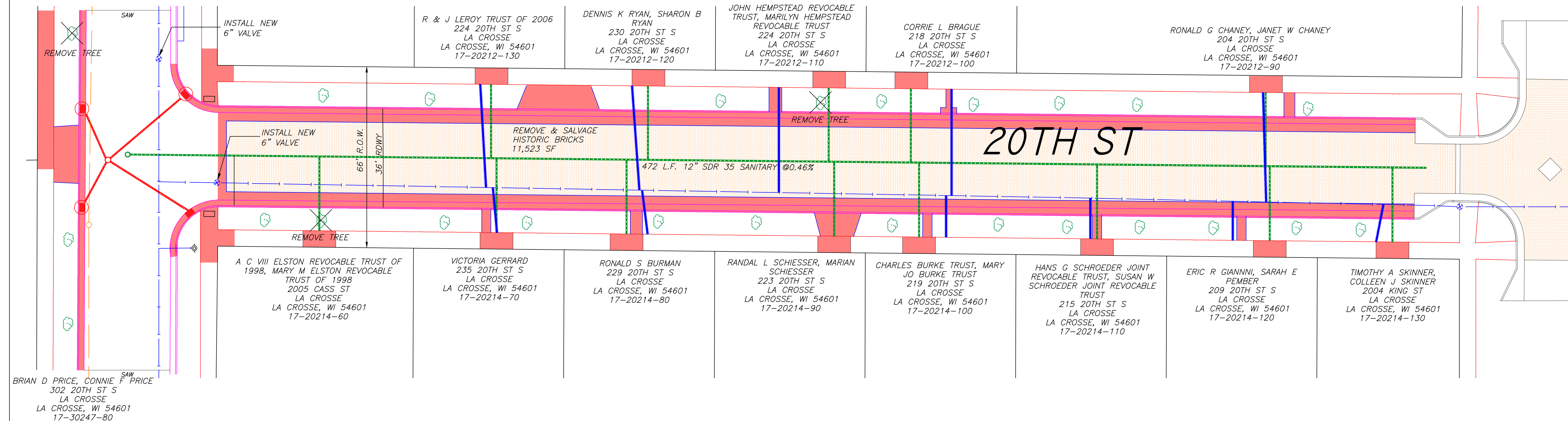
**BENCHMARKS**  
TOP NUT OF HYDRANT

20TH & CASS ST	665.07
20TH & KING ST	670.38
20TH & MAIN ST	668.95

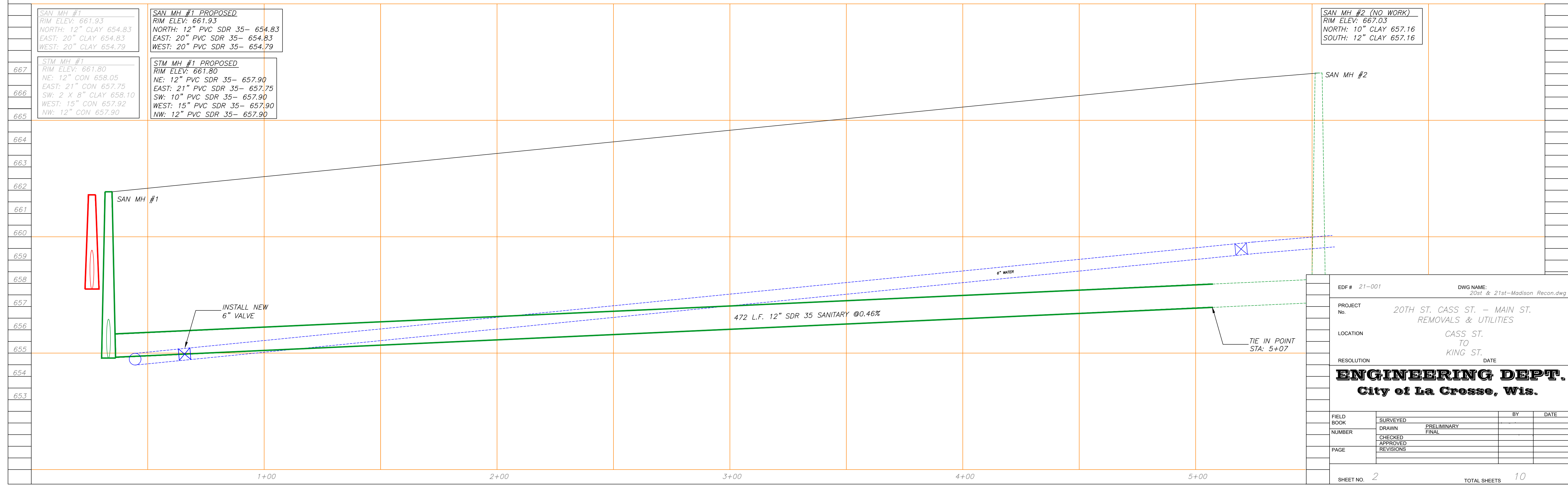
**WATER TAP INFORMATION**

TAP #	ADDRESS	SIZE	MATERIAL	NOTES
7204	110 S. 20TH	0'-0.34"	COPPER	
6794	115 S. 20TH	0'-0.34"	COPPER	
7200	116 S. 20TH	0'-0.34"	COPPER	
7184	122 D. 20TH	0'-0.34"	COPPER	
7393	123 S. 20TH	0'-0.34"	COPPER	
6799	127 S. 20TH	0'-0.34"	COPPER	
7378	129 S. 20TH	0'-0.34"	GALV	
6884	130 S. 20TH	0'-0.34"	COPPER	
7379	131 S. 20TH	0'-0.34"	COPPER	
7380	135 S. 20TH	0'-0.34"	COPPER	
7322	136 S. 20TH	0'-0.34"	COPPER	
6879	140 S. 20TH	0'-0.34"	GALV	
7229	2005 KING	0'-0.34"	COPPER	
7381	2004 KING	0'-1.14"	GALV	DISCONNECT 2 TAPS AND RETAP WITH 1" CORP AND 1" COPPER
7388	204 S. 20TH	0'-1.14"	COPPER	DISCONNECT 2 TAPS AND RETAP WITH 1" SADDLE AND CORP AND 1" COPPER
7382	209 S. 20TH	0'-0.34"	COPPER	
7383	215 S. 20TH	0'-0.34"	COPPER	
7403	218 S. 20TH	0'-0.34"	GALV	
7384	219 S. 20TH	0'-0.34"	COPPER	
7389	222 & 224 S. 20TH	0'-0.34"	COPPER	
7386	229 S. 20TH	0'-1"	GALV	DISCONNECT 2 TAPS AND RETAP WITH 1" CORP AND 1" COPPER
7387	230 S. 20TH	0'-0.34"	COPPER	
6937	234 S. 20TH	0'-1"	GALV	DISCONNECT 2" TAP AND RETAP WITH 1" AND HOOK TO EXISTING COPPER
9650	235 S. 20TH	0'-0.34"	COPPER	
7015	1932 CASS	0'-0.34"	COPPER	
7211	1927 CASS	0'-1.14"	GALV	DISCONNECT 2 TAPS AND RETAP WITH 1" AND 1" COPPER
4117	1924 CASS	0'-1"	COPPER	DISCONNECT 2 TAPS AND RETAP WITH 1" AND HOOK TO EXISTING COPPER
7014	1916 CASS		GALV	DISCONNECT 2 TAPS AND RETAP 1" AND REPLACE WITH 1" COPPER

BARBARA KOOMAN  
1932 CASS ST  
LA CROSSE  
LA CROSSE, WI 54601  
17-3047-90



BRIAN D PRICE, CONNIE F PRICE  
302 20TH ST S  
LA CROSSE  
LA CROSSE, WI 54601  
17-30247-80



**SAN MH #1**  
RIM ELEV: 661.93  
NORTH: 12" CLAY 654.83  
EAST: 20" CLAY 654.83  
WEST: 20" CLAY 654.79

**STM MH #1**  
RIM ELEV: 661.80  
NE: 12" CON 658.05  
EAST: 21" CON 657.75  
SW: 2 X 8" CLAY 658.10  
WEST: 15" CON 657.92  
NW: 12" CON 657.90

**SAN MH #1 PROPOSED**  
RIM ELEV: 661.93  
NORTH: 12" PVC SDR 35- 654.83  
EAST: 20" PVC SDR 35- 654.83  
WEST: 20" PVC SDR 35- 654.79

**STM MH #1 PROPOSED**  
RIM ELEV: 661.80  
NE: 12" PVC SDR 35- 657.90  
EAST: 21" PVC SDR 35- 657.75  
SW: 10" PVC SDR 35- 657.90  
WEST: 15" PVC SDR 35- 657.90  
NW: 12" PVC SDR 35- 657.90

**SAN MH #2 (NO WORK)**  
RIM ELEV: 667.03  
NORTH: 10" CLAY 657.16  
SOUTH: 12" CLAY 657.16

EDF # 21-001      DWG NAME: 20st & 21st-Madison Recon.dwg

PROJECT No. 20TH ST, CASS ST. - MAIN ST. REMOVALS & UTILITIES

LOCATION CASS ST. TO KING ST.

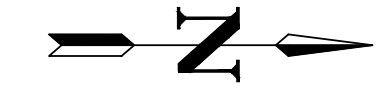
RESOLUTION      DATE

**ENGINEERING DEPT.**  
**City of La Crosse, Wis.**

FIELD BOOK	SURVEYED	BY	DATE
NUMBER	PRELIMINARY		
PAGE	FINAL		
	CHECKED		
	APPROVED		
	REVISIONS		

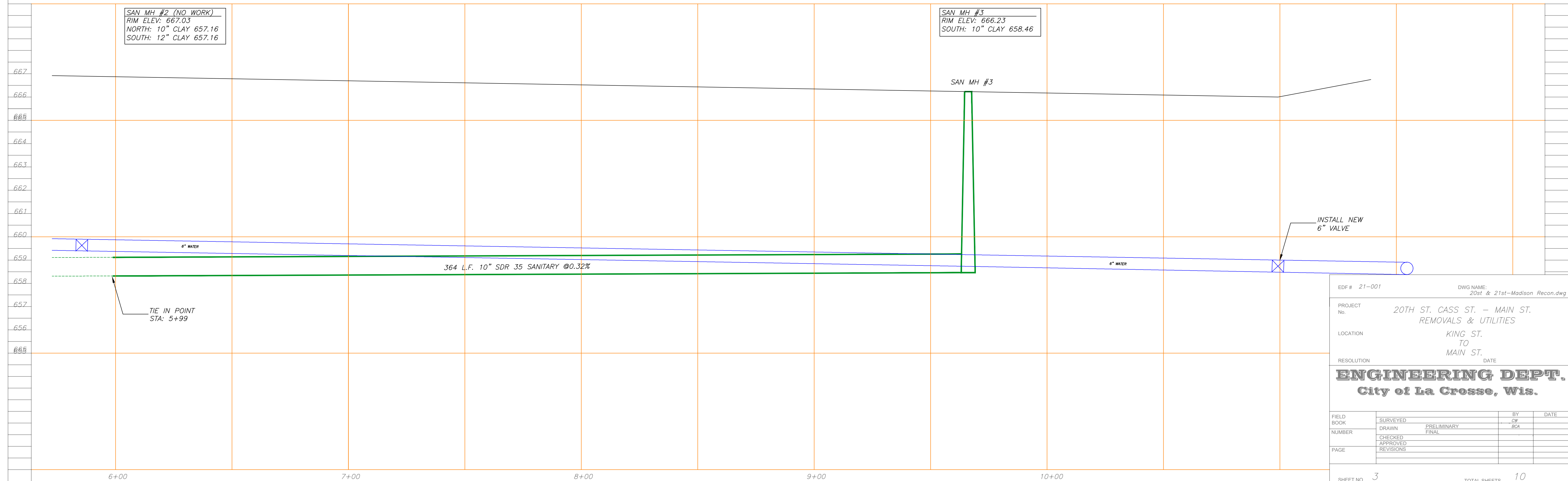
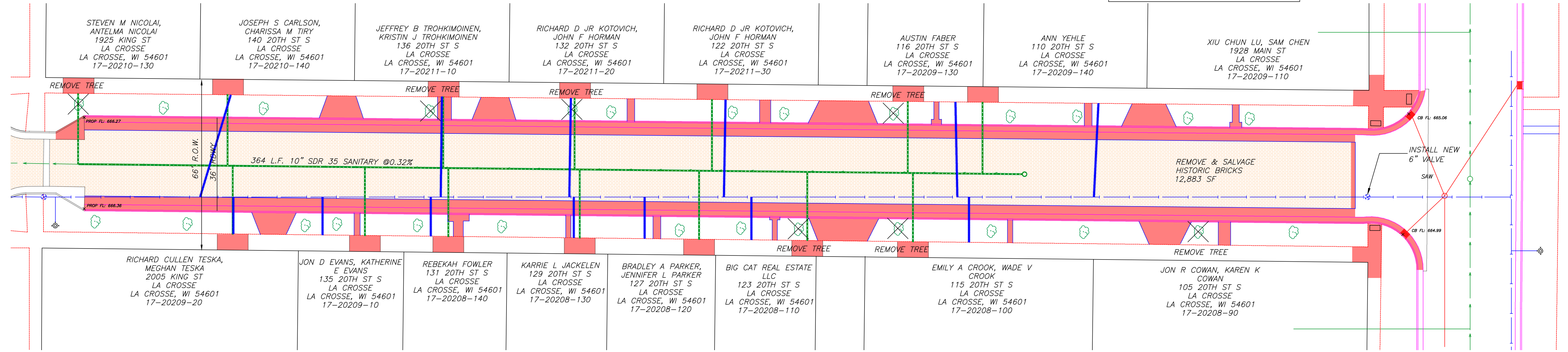
SHEET NO. 2      TOTAL SHEETS 10

**NOTE**  
 CONTRACTOR IS TO VERIFY LOCATION OF ALL UTILITIES PRIOR TO ANY CONSTRUCTION.  
 LOCATIONS OF UTILITIES SHOWN ON PLANS ARE APPROXIMATE.  
 CONTRACTOR TO INSTALL AND MAINTAIN INLET PROTECTION PER DETAIL.  
 CITY OF LACROSSE TO SUPPLY ALL CASTINGS

  
 SCALE: 1"=20' H  
 1"= 2' V  
 ELEVATIONS SHOWN  
 ARE NAVD 1988

**BENCHMARKS**  
 TOP NUT OF HYDRANT

20TH & CASS ST	665.07
20TH & KING ST	670.38
20TH & MAIN ST	668.95



EDF # 21-001 DWG NAME: 20st & 21st-Madison Recon.dwg

PROJECT No. 20TH ST, CASS ST. - MAIN ST. REMOVALS & UTILITIES

LOCATION KING ST. TO MAIN ST.

RESOLUTION DATE

**ENGINEERING DEPT.**  
**City of La Crosse, Wis.**

FIELD BOOK	SURVEYED	BY	DATE
NUMBER	DRAWN	CW	
	CHECKED	RCA	
	APPROVED		
	REVISIONS		

SHEET NO. 3 TOTAL SHEETS 10