



# CITY OF LA CROSSE ADA TRANSITION PLAN

March 10, 2022

LA CROSSE  
WISCONSIN

est. 1946  
75 years of excellence  
benesch

# Meeting Objectives

---



- What is the ADA?
- City of La Crosse ADA Transition Plan Phase I
  - Department meetings and inventory surveys
  - Public involvement
- City of La Crosse ADA Transition Plan Phase II

# Benesch ADA Team

---



- **Bryan Weinstein, P.E., AI/PE**, Group Manager of ADA Compliance and Accessibility Services
- **19 years of experience**
- Certified ICC **Accessibility Inspector/Plans Examiner** (AI/PE)
- **Registered Professional Engineer** (P.E.)

- **Ines Nizeye, AICP, AI/PE**, Project Manager
- **8 years of experience**
- Certified ICC **Accessibility Inspector/Plans Examiner** (AI/PE)
- **American Institute of Certified Planners** (AICP)



# Overview

Value Focused.

Community Minded.

Quality Driven.



**ENR**

TOP 500 DESIGN FIRMS

**#112**

## Firmwide Expertise

ADA Compliance

Landscape

Site Development

Aviation

Architecture

Transit

Bridges

Municipal

Value Methodology

Buildings

Public Finance

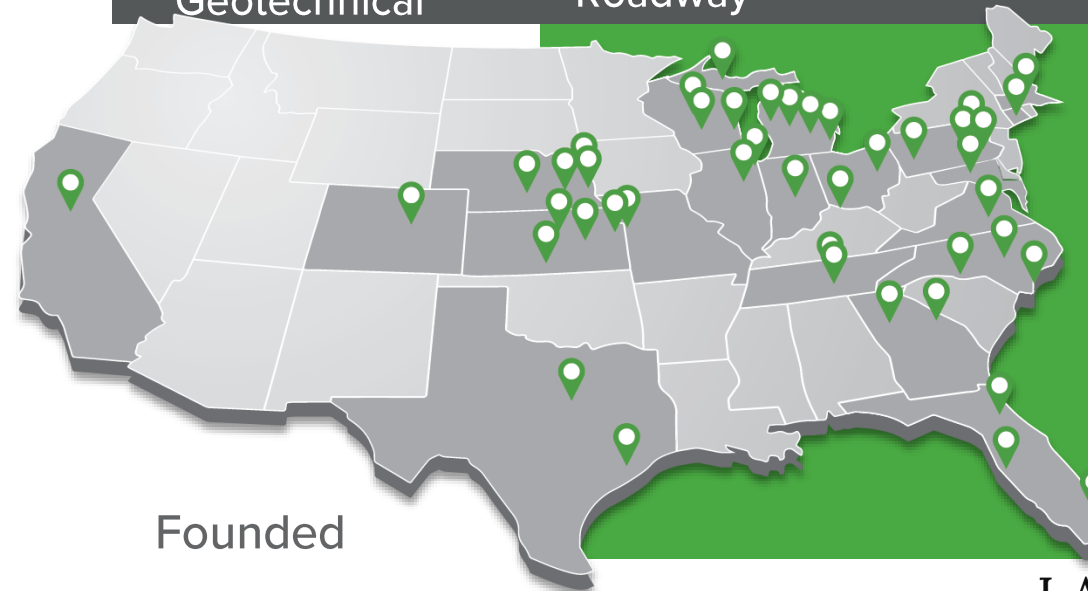
Water

Environmental

Railroad

Geotechnical

Roadway



**44**  
Locations

**20**  
States

**1**  
Team

Founded

**1946**

**Tindale Oliver** is now >> **benesch**

**LA CROSSE**  
**WISCONSIN**

# What is the ADA

---

## Basic Purpose:

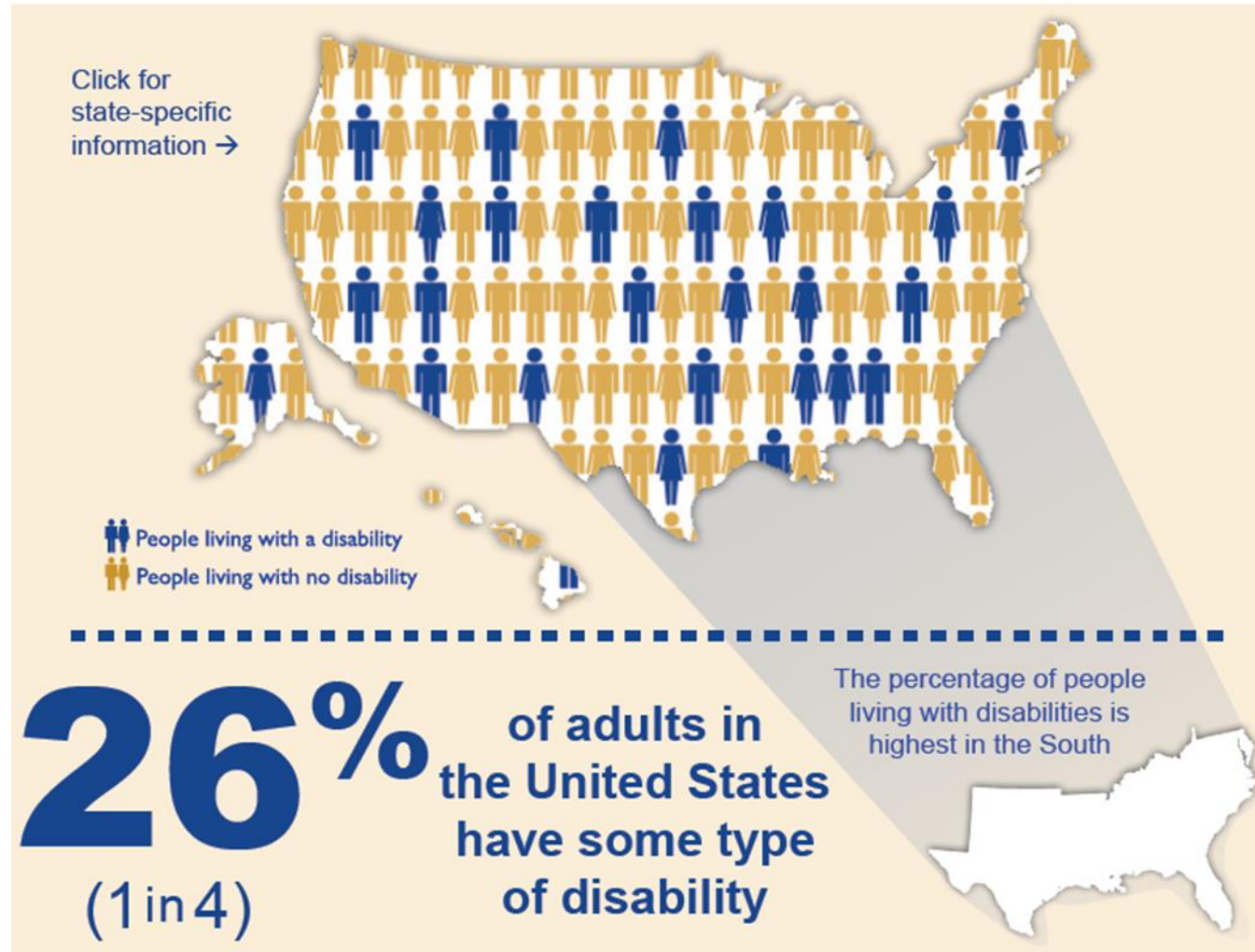
**“No entity shall discriminate against an individual with a disability in connection with the provision of public services.”**

*-Section 37.5 of the Americans with Disabilities Act*

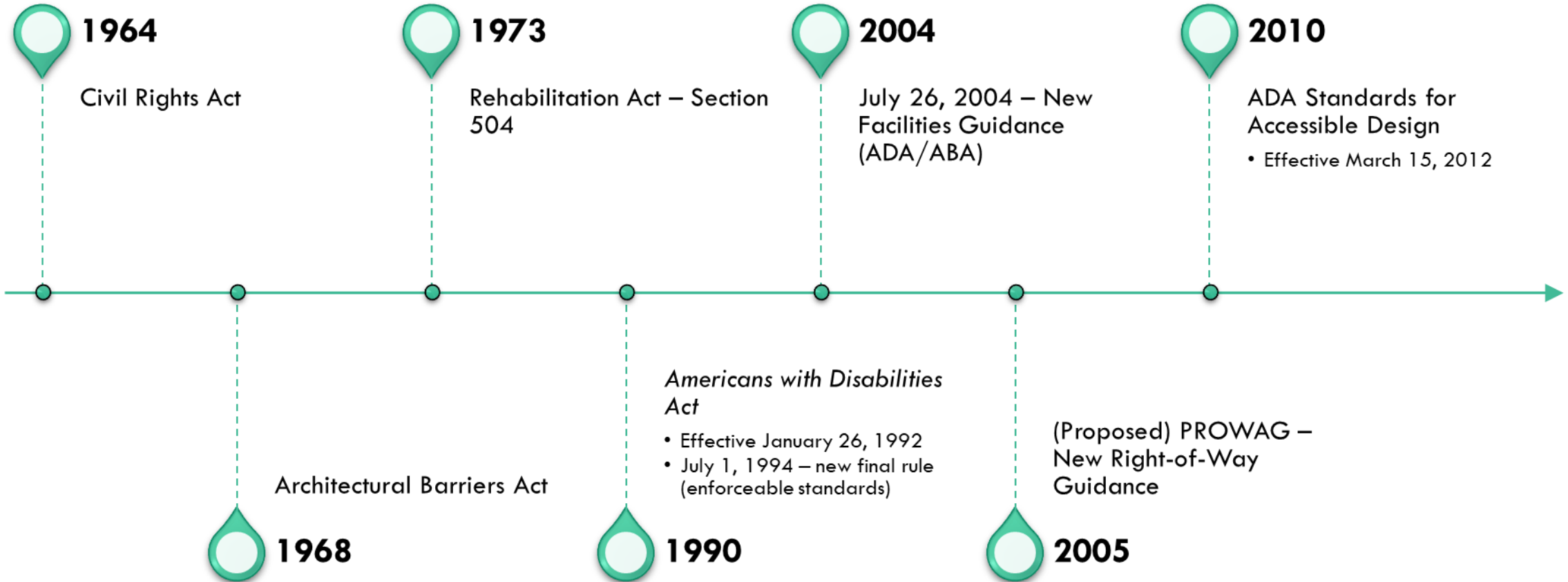


# Disability Affects All of Us

61 million adults in the United States live with a disability



# ADA Important Dates



# Public Agency Requirements

---

## Public Agencies Must:

Make **reasonable modifications** to afford full and equal enjoyment – unless a fundamental alteration.

---

Provide **reasonable auxiliary aids** to assure full and equal enjoyment – unless an undue burden.

---

**Remove structural and communication barriers** – where readily achievable.

---

Design all “**new construction**” to be readily **accessible** and to protect the path of travel.

---



# ADA Transition Plan

---

A public entity with 50+ employees is required to:

- Develop an **ADA Transition Plan**
- Allow **Public Participation** in the development of the Plan
- **Mitigate barriers** to accessibility, as identified in the Plan

# ADA Transition Plan

The Plan shall:

- Identify physical obstacles
- Describe remediation method
- Specify remediation schedule
- Indicate office responsibility for implementation plan

ID:  
2554

Facility:

Priority Score 5



Quick Fix: Yes

Built before ADA: No

Location: Main Entrance Men's Restroom

Schedule: 2021

Estimated Cost: \$100.00

## VIOLATIONS

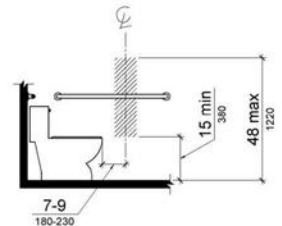
2010 ADA Standards for Accessible Design Codes §604.7

The toilet paper dispenser is located out of the accessible reach range.

## RECOMMENDATIONS

Remount the toilet paper dispenser to 7" minimum and 9" maximum in front of the water closet measured to the centerline of the dispenser.

The outlet of the dispenser shall be 15" minimum and 48" maximum above the floor and shall not be located behind.



Sample violations report

# Examples of Assessed Items

---

- Entrances/Exits
- Accessible Routes
- Restrooms
- Drinking Fountains
- Signage
- Elevators
- Playgrounds
- Parking
- Sidewalks and trails
- Tripping hazards
- Protruding objects



# Scoring and Prioritization

## Existing conditions

- Accessibility
- Safety/security

## Prioritization

- Severity
- Visitor Usage
- Cost Estimation of Improvements
- Location of Amenity
- Age of Facility

### High

- Major safety Issue
- New Construction built out of compliance
- No accessible route

### Medium

- Non-compliant amenities
- Accessible route with moderate slopes

### Low

- Non-compliant signage
- Minor slopes

### Quick-Fixes

- Signage
- Barrier removal
- Doorknobs

# Transition Plan Development

---

1

## Phase 1 – Facilities Inventory

- Facilities, Programs, and Policies Inventory.
  - Public Outreach

2

## Phase 2 – Transition Plan

- Self-Evaluation
- Transition Plan development
  - Public Outreach

In Progress

# ADA Transition Plan – Phase I

- Task I: Project Management and Initiation
- **Task II: Facilities and Programs Inventory**
- Task III: Initial Public Participation
- Task IV: City Council Presentation

TASK DESCRIPTION	2022					
	January	February	March	April	May	June
Project Management and Initiation	★	—				
Facilities and Programs Inventory		★	✎	📄		
Initial Public Participation		★	✎	★	📄	
City Council Presentation		★		📄		★



# Phase I – Department Meetings

---

- Held on February 16<sup>th</sup>, 2022
- Overview of ADA history and public agency requirements
- Facility and programs inventory surveys
- Ongoing project involvement

# Phase I – Facilities and Programs Inventory

---

- Conducted Programs and Facilities inventory from February 1<sup>st</sup> to March 4<sup>th</sup>
- Received responses from all departments
- Inventory included:
  - ADA Title II Notice
  - Grievance procedure
  - Alternate formats
  - Communication systems
  - Existing Policies and Programs
  - Buildings, parks, trails list



# Phase I – Public Involvement

---

- Public participation plan
- Public outreach survey is in progress and will be posted on the City website
- Completed an in-person meeting with the Committee for Citizens with Disabilities on February 17<sup>th</sup>, 2022
- One virtual open forum public meeting

# ADA Transition Plan – Phase II

---

## PHASE II:

- Task V: Self-Evaluation (Programs, Policies, and Procedures)
- Task VI: Self-Evaluation (Buildings & Parks)
- Task VII: Self-Evaluation (Public Right-Of-Way)
- Task VIII: ADA Transition Plan
- Task IX: Final Presentation to City Council
- Task X: City Staff Training on ADA Requirements



# **THANK YOU!**

If you have any questions, please contact

City of La Crosse ADA Coordinator

**Cullen Haldeman (608-789-8185)**