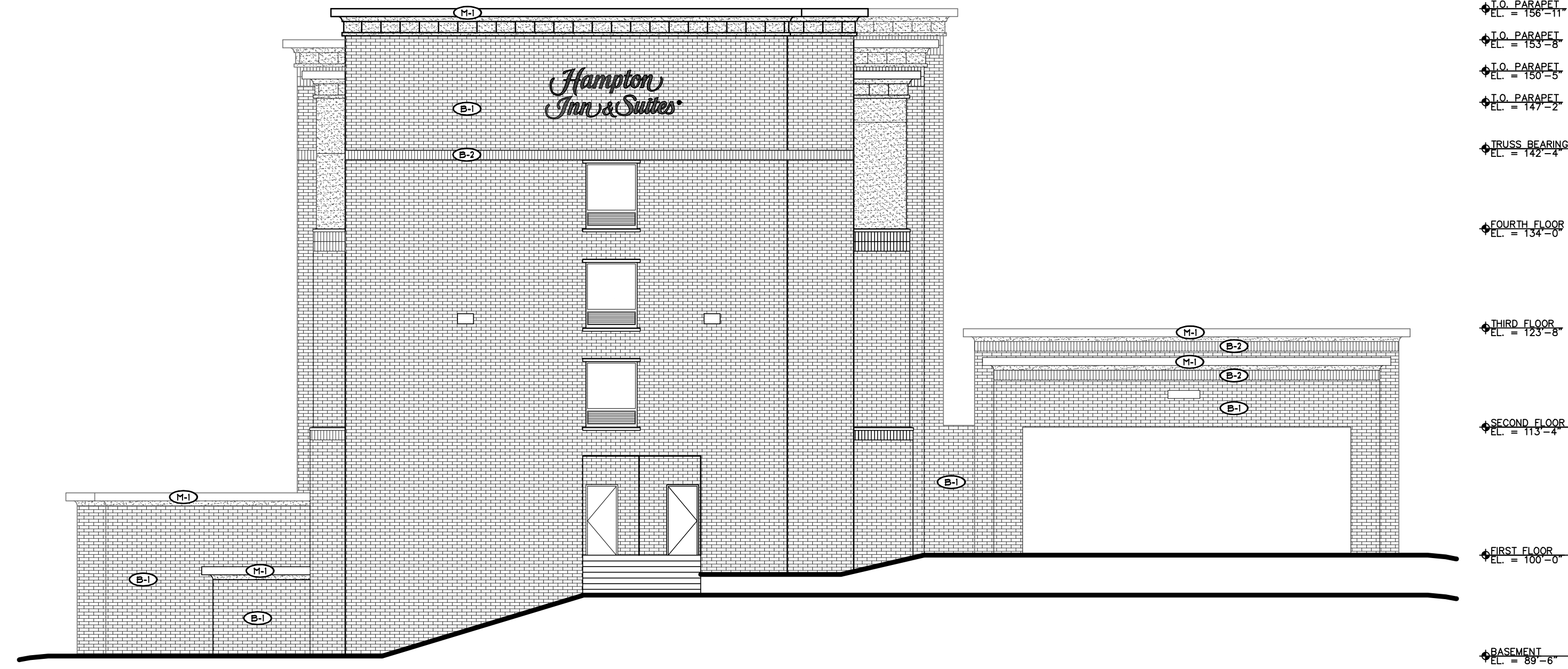


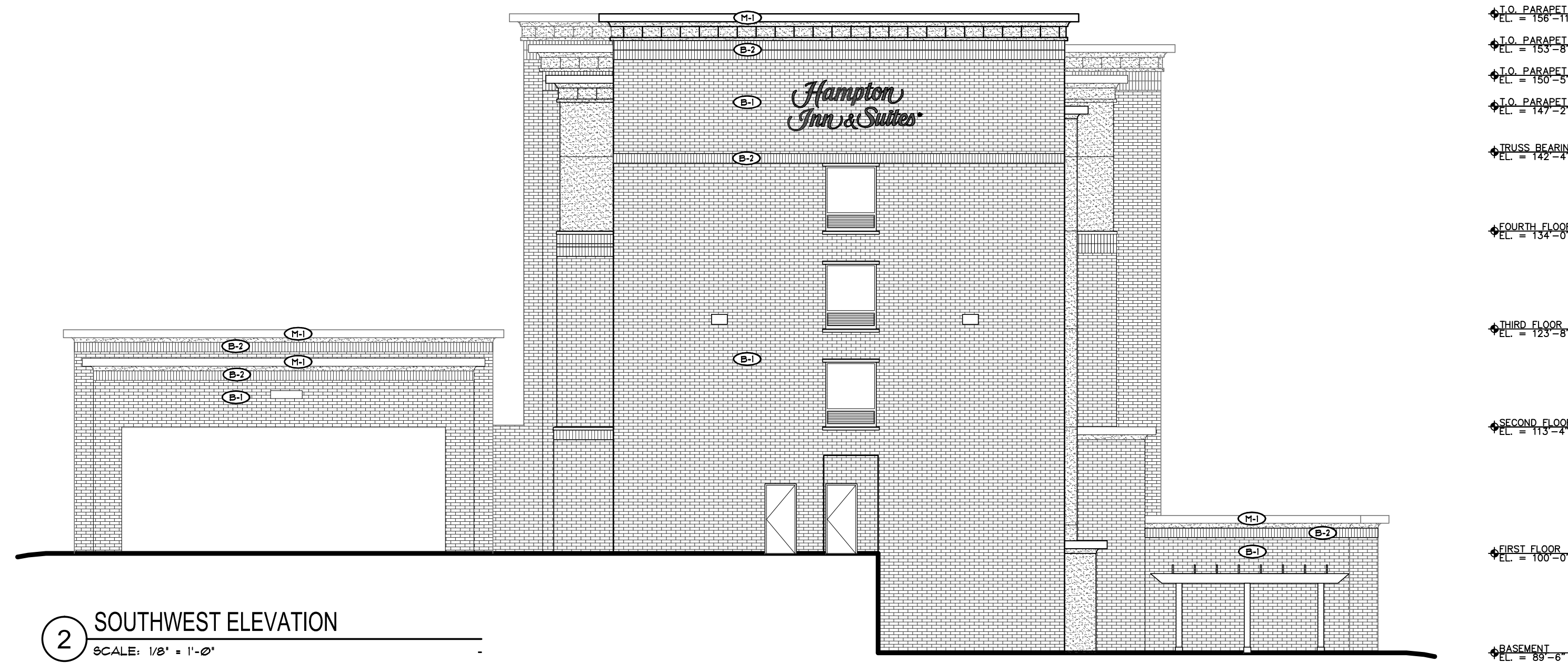


GARY BRINK & ASSOCIATES
ARCHITECTS
7780 ELMWOOD AVE. STE. 204
MIDDLETON, WI 53562
608-829-1750
608-829-3056 (FAX)



1 NORTHEAST ELEVATION
SCALE: 3/32" = 1'-0"

GRAPHIC	EXTERIOR FINISH KEY
	BRICK NO. 1 SIZE: UTILITY COLOR/FINISH: BRONZESTONE/INTERSTATE BRICK
	BRICK NO. 2 - SOLDIER COURSE/ROULLOCK SIZE: UTILITY COLOR/FINISH: BRONZESTONE/INTERSTATE BRICK
	PRECAST NO. 1 COLOR/FINISH: EDWARDS CAST STONE FINISH: TO MATCH BRICK
	EIFS NO. 1 COLOR/FINISH: STO NEXT FINISH: FINE SAND 60882 DOWNING SAND
	EIFS NO. 2 COLOR/FINISH: STO NEXT FINISH: FINE SAND 60755 HOPSTEAD BRICK
	METAL NO. 1 (FRASCIA AND WINDOW) FINISH: DARK BRONZE



2 SOUTHWEST ELEVATION
SCALE: 1/8" = 1'-0"

PROJECT: *Hampton Inn & Suites*
NORTH-EAST CORNER OF NORTH 3rd STREET AND La CROSSE STREET
La CROSSE, WISCONSIN 54603
CLIENT: **La CROSSE HOTEL GROUP, LLC**
115 E. MAIN STREET SUITE 210
MADISON, WI 53703

©2014 GARY BRINK & ASSOC.
Any duplication, reproduction, or use by any other party is prohibited unless prior written authorization is received from GARY BRINK & ASSOC.

PROJECT: 201354
DRAWN BY:
DATE:
SCALE: AS NOTED