



ARCHITECTURE
ENGINEERING
INTERIOR DESIGN

HSR ASSOCIATES INC.
100 MILWAUKEE STREET
LA CROSSE, WISCONSIN
PHONE: 608.784.8300
FAX: 608.782.5844
WEB SITE: www.hsrasociates.com

Project Title: THE HUB ON 6TH
Project Location: 415 NORTH 6TH STREET
LA CROSSE, WISCONSIN
Sheet Title: BUILDING ELEVATIONS

HSR Project Number: 1003
Project Date: APRIL 2017
Drawn By: Kampa

Key Plan:

Last Update: 6/22/2017

A200R



BUILDING ELEVATION GEN. NOTES:

- FIELD VERIFY EXISTING CONDITIONS. BRING ANY DISCREPANCIES BETWEEN THE DRAWINGS AND ACTUAL CONDITIONS TO THE ARCHITECT'S ATTENTION.
- FLASHING FOR METAL PANEL SYSTEM SHALL BE ATTACHED AT MORTAR JOINTS, NOT THROUGH MASONRY UNITS.
- EXISTING WINDOW FRAMES TO REMAIN AT SEG-A RECESSED BALCONIES, WRAP W/ PREFINISHED METAL WRAP.

BUILDING ELEVATION KEY NOTES:

- ▽ PREFINISHED METAL CAP FLASHING.
- ▽ PREFINISHED METAL FASCIA WRAP.
- ▽ PREFINISHED METAL VERTICAL "COLUMN" PIECE.
- ▽ PARTIAL HEIGHT GUARDRAIL.
- ▽ FULL HEIGHT GUARDRAIL.
- ▽ EXISTING FACE BRICK.
- ▽ EXISTING STONE VENEER.
- ▽ NEW EXTERIOR WINDOWS AND DOORS TYP.
- ▽ BALCONY PRIVACY PARTITIONS.
- ▽ WOOD GULLAM ROOF FRAMING BEAMS.
- ▽ MECHANICAL EXHAUST LOUVER.
- ▽ GARAGE DOOR.
- ▽ EXISTING FACE BRICK HEADERS.
- ▽ NEW EXHAUST LOUVERS. VERIFY SIZES & LOCATIONS.
- ▽ PREFINISHED METAL HORIZONTAL BAND/ FLASHING.
- ▽ NEW ENTRANCE CANOPY - SEE 7A300.
- ▽ RETAINING WALLS, GUARDRAILS & ENTRY DRIVE/WELL.
- ▽ SUSPENDED BALCONY.
- ▽ ALCOVE BALCONY.
- ▽ ROOF DRAIN OVERFLOW PIPE THRU WALL - SEE PLUMBING.
- ▽ FINISHING - VERIFY MATERIAL.
- ▽ OVERFLOW THRU WALL SCUPPER.

NEW BRICK & SIDING:

- ▽ BRICK 1
- ▽ BRICK 2
- ▽ SIDING 1
- ▽ SIDING 2 (METAL)

ARCHITECTURE
ENGINEERING
INTERIOR DESIGN

HSR ASSOCIATES INC.
100 MILWAUKEE STREET
LA CROSSE, WISCONSIN
PHONE: 608.784.8300
FAX: 608.782.5844
WEB SITE: www.hsrasociates.com

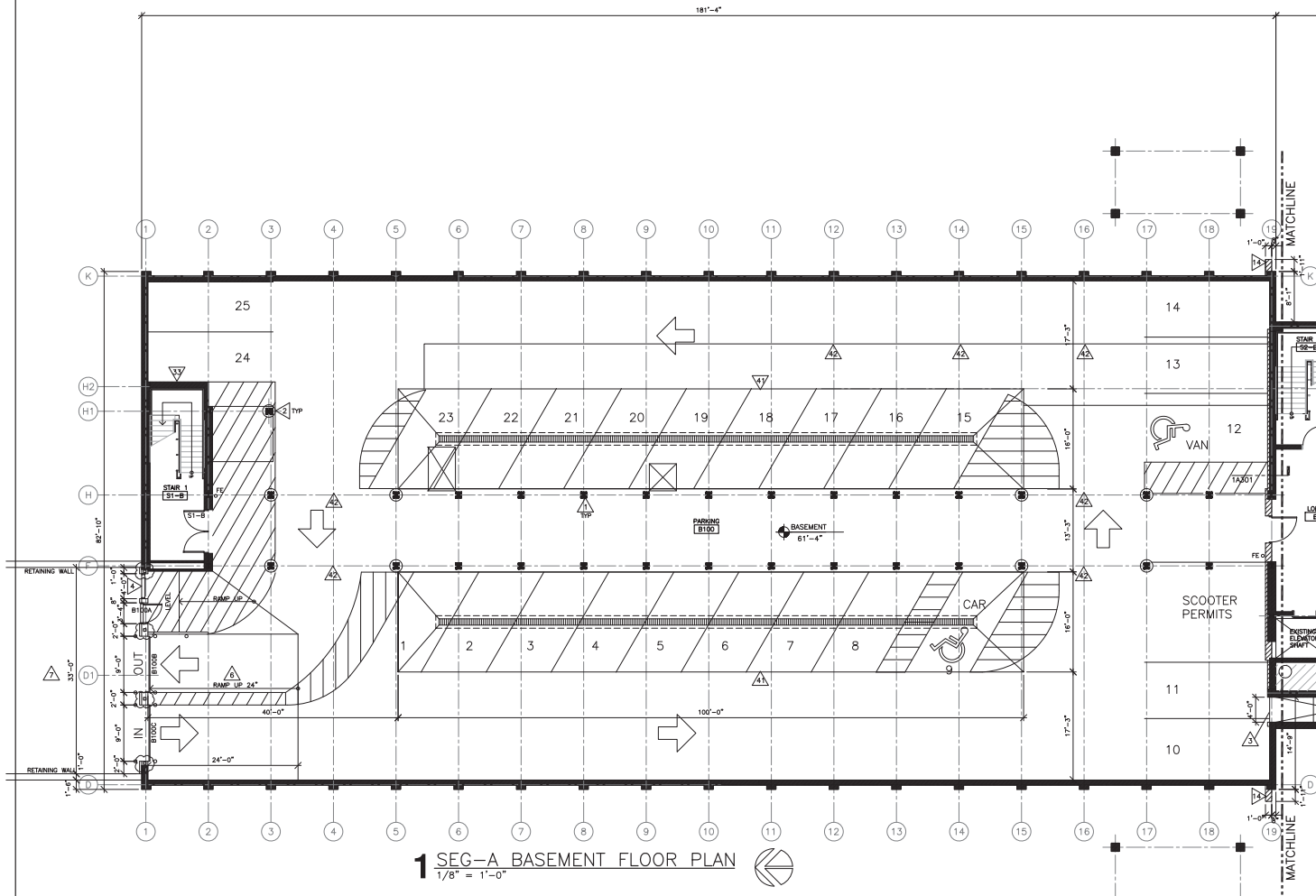
Project Title: THE HUB ON 6TH
Project Location: 415 NORTH 6TH STREET
LA CROSSE, WISCONSIN
Sheet Title: BUILDING ELEVATIONS

HSR Project Number: 1003
Project Date: APRIL 2017
Drawn By: Kampa

Key Plan:

Last Update: 4/17/2017

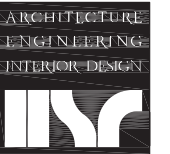
A202



1 SEG-A BASEMENT FLOOR PLAN
1/8" = 1'-0"

- FLOOR PLAN GENERAL NOTES:**
- SYMBOL INDICATES WALL TYPE - SEE SHEET A211 FOR WALL TYPE DETAILS.
 - INSTALL WOOD BLOCKING BETWEEN STUDS AS REQUIRED FOR T.V., CASEWORK, GRAB BARS & SHOWER SEATS. SEE GEN NOTE F ON SHEET A400.
 - NEW EXTERIOR WINDOW TYPES INDICATED ON FLOOR PLANS. SEE A210 FOR EXTERIOR WINDOW TYPES.
 - POWDERCOAT PAINT ALL EXPOSED EXTERIOR STEEL.
 - SEE ENLARGED UNIT PLANS (A400 SERIES SHEETS) FOR WALL TYPE TAGS AND DIMENSIONS FOR EACH UNIT TYPE.
 - NEW STAIR EXTENSIONS TO BE CONCRETE FILLED METAL PANELS BETWEEN 2" x 12" TUBE STEEL STRINGERS AND 4" CONCRETE/FORM DECK LANDING.
 - ALL STAIRS SHALL HAVE HANDRAILS ON BOTH SIDES, TYP. TOP OF ALL HANDRAILS TO BE 36" A.F.F. TOP OF ALL GUARDRAILS TO BE 42" A.F.F.
 - PROVIDE 12" HANDRAIL EXTENSIONS AT TOP & BOTTOM OF ALL NEW & EXISTING STAIRS & RAMPS.
 - ALL BALCONY DOOR THRESHOLDS SHALL BE ADA COMPLIANT.

- FLOOR PLAN KEY NOTES:**
- > 3 HOUR RATED SPRAY FIREPROOFING ON ALL COLUMNS, BEAMS AND FLOOR DECK ABOVE - BASEMENT AND FIRST FLOOR. SEE-A ONLY. SEE DETAILS 8 & 8A11R.
 - > CONCRETE TRAFFIC PROTECTION BASE AT COLUMNS.
 - > INTAKE AIR LOUVER. SEE MECH.
 - > EXHAUST AIR LOUVER. SEE MECH.
 - > NEW OPENINGS THRU EXISTING FOUNDATION WALL: GARAGE DOORS, MAIN DOOR & LOUVER.
 - > NEW RAMP AS REQUIRED - SEE SECTION SA301.
 - > NEW HEATED CONC ENTRANCE DRIVE & RETAINING WALLS.
 - > GUARDRAIL PER CODE AT TOP OF RETAINING WALL. EXISTING TUNNEL. REMOVE LID, INFILL W/ SAND & NEW CONC FLOOR PATCH.
 - > NEW CONC FLOOR AREA INFILL OR PATCH (SHOWN HATCHED) SEE STRUCTURAL.
 - > NEW MOP SINK - SEE PLUMBING.
 - > NEW CONC FLOOR AREA PITCHED TO NEW FLOOR DRAIN. (BKE WASH).
 - > NOT USED.
 - > NEW FIREWALL EXTENTS.
 - > ADD HANDRAILS AND HANDRAIL EXTENSIONS TO EXISTING STAIR TOWERS TO REMAIN.
 - > VOID SPACE BEHIND STAIR (NOT A CHASE).
 - > NEW ENTRANCE CANOPY.
 - > RECESSED BALCONY SEE-A, 1ST, 2ND & 3RD FLOORS.
 - > PRIVACY PARTITION W/ HORIZ WOOD BOARDS TO 6'-0" HIGH.
 - > 2 HOUR RATED DUCT CHASE.
 - > EXHAUST GRILLE THRU EXISTING BUILDING EXTERIOR WALL. COORDINATE W/ MECH.
 - > LAUNDRY CLOTHES DRYER VENTING THRU EXISTING BUILDING EXTERIOR WALL. COORDINATE W/ MECH.
 - > UTILITY SINK - SEE PLUMBING.
 - > (LAUNDROMAT) DRYERS.
 - > (LAUNDROMAT) WASHERS.
 - > EXISTING 2 HOUR RATED MASONRY CHASE TO REMAIN. FUTURE AUTOMATIC DOOR OPERATOR / ACTUATOR PEDESTAL. LOCATION, VERIFY REQUIREMENTS.
 - > WIRE STORAGE COMPARTMENTS.
 - > 2x4 WOOD STUDS TO 8'-0" W/O/SB SHEATHING AND DOOR. WIRE MESH SECURITY TOPS.
 - > APARTMENT UNIT TYPE DESIGNATION. SEE A400 SHEETS.
 - > 4TH FLOOR BALCONY. EPDM SYSTEM, WALKWAY MATS & DRAINS.
 - > CLOSET FOR WATER HEATER IN LAUNDROMAT.
 - > 4" CMU AROUND STEEL COLUMNS AT FIREWALL.
 - > REMOVE VINYL WALL COVERING AT STAIR TOWER, PATCH PLASTER AND PAINT.
 - > EXISTING ELEVATOR SHAFT & ENTRANCES TO REMAIN. EXTEND SHAFT TO NEW 4TH FLOOR. NEW CAR & EQUIP. X INDICATES AREA OPEN TO ABOVE.
 - > X INDICATES AREA OPEN TO BELOW.
 - > REFERENCE LINE OF PARAPET/BALCONY RAIL BELOW.
 - > NEW SUSPENDED BALCONY.
 - > BASKETBALL COURT PAVER SYSTEM & FENCING PER CODE.
 - > NEW EPDM ROOF SYSTEM ON EXISTING CONC PLANK DECK. (R2)
 - > NEW CONC FLOOR AREA PITCHED TO NEW TRENCH DRAIN.
 - > REMOVAL OF BUILDING COLUMN AND NEW SUPPORT BEAMS. SEE STRUCTURAL.
 - > VERIFY SIZE OF DUCT ENCLOSURE REQ'D WITH MECHANICAL (NOT A CHASE).
 - > 2x6 WOOD STUD WALL/WIRE RACKWAY. VERIFY REQUIREMENTS W/ ELECTRICAL - VERIFY SHEATHING & SOUND. CAP FLASH.
 - > CONC PAD AND SITE FENCING - VERIFY.
 - > NOT USED.
 - > REMOVE PORTION OF EXISTING GRATE AND AREAWALL FOR INTAKE AIR - INFILL PORTION OF AREAWALL.
 - > NEW STAIRWAY INTERRUPTION GATE.
 - > STEEL LADDER ATTACHED TO CMU WALL TO HATCH ABOVE.
 - > 1 HOUR RATED ASSEMBLY AT COLUMNS - SEE DETAIL 11A211R.
 - > 1 HOUR RATED SPRAY FIREPROOFING ON ALL COLUMNS AND BEAMS - SEE DETAILS 5, 8, 10 & 11 SHEET A211R.
 - > FRP WAINSCOT TO 48" AFF.
 - > PLYWOOD WAINSCOT TO 48" AFF.
 - > 1 HOUR RATED SPRAY FIREPROOFING ON BEAMS ABOVE SEE DETAIL 10A211R EXCEPT AS NOTED.
 - > 1 HOUR RATED TOP TO BOTTOM FIREPROOFING ON BEAMS ABOVE AT EXTERIOR WALL. SEE DETAIL 8A211R.

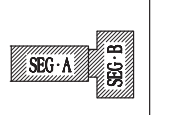


HSR ASSOCIATES INC.
100 MELVAUKEE STREET
LA CROSSE, WISCONSIN
PHONE: 608.784.1810
FAX: 608.782.5884
WEB SITE: www.hsrassociates.com

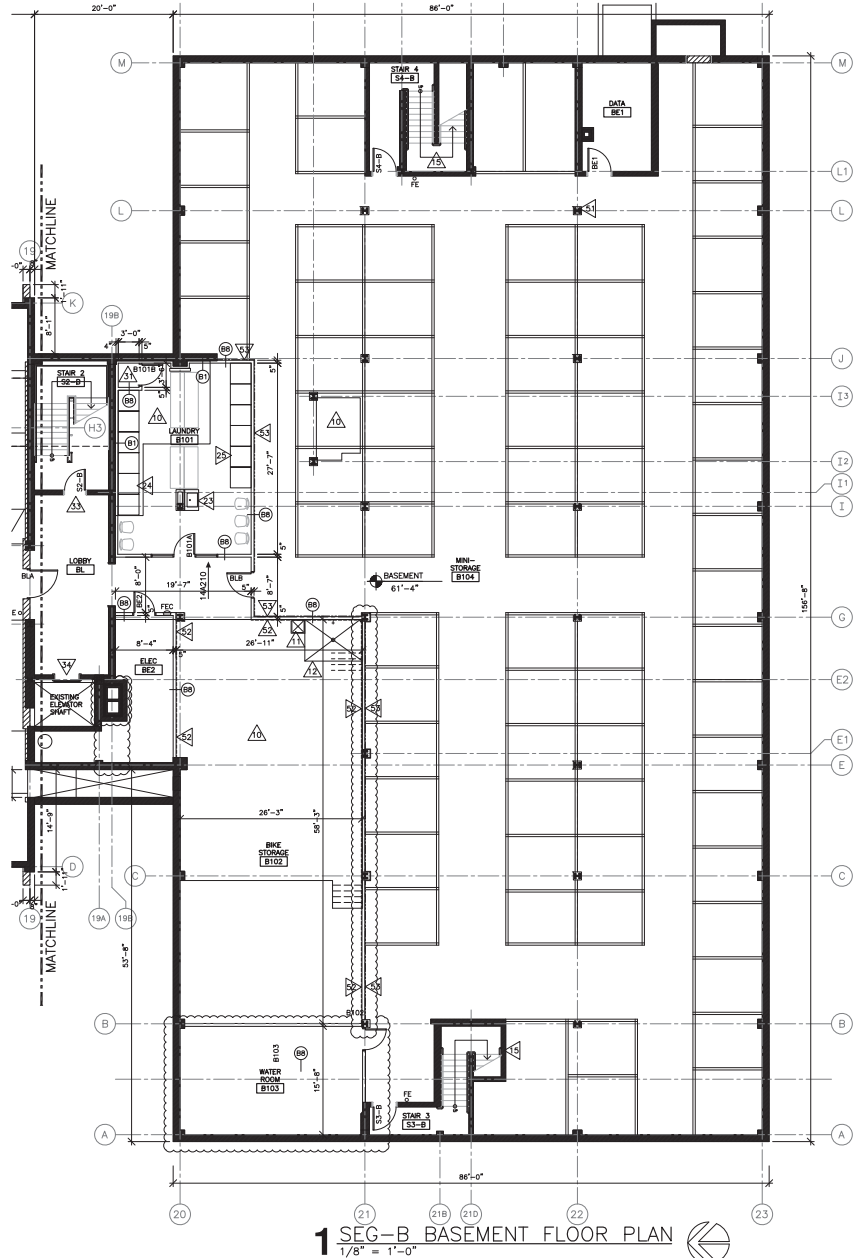
Project Title: THE HUB ON 6TH
Project Location: 415 NORTH 6TH STREET
LA CROSSE, WISCONSIN
Sheet Title: SEG-A BASEMENT FLOOR PLAN

HSR Project Number: N011
Project Date: JULY 27, 2017

Drawn By: Kampa



Last Update: 11/2/2017
A100R2



1 SEG-B BASEMENT FLOOR PLAN
1/8" = 1'-0"

- FLOOR PLAN GENERAL NOTES:**
- SYMBOL INDICATES WALL TYPE - SEE SHEET A211 FOR WALL TYPE DETAILS.
 - INSTALL WOOD BLOCKING BETWEEN STUDS AS REQUIRED FOR T.V., CASEWORK, GRAB BARS & SHOWER SEATS. SEE GEN NOTE F ON SHEET A400.
 - NEW EXTERIOR WINDOW TYPES INDICATED ON FLOOR PLANS. SEE A210 FOR EXTERIOR WINDOW TYPES.
 - POWDERCOAT PAINT ALL EXPOSED EXTERIOR STEEL.
 - SEE ENLARGED UNIT PLANS (A400 SERIES SHEETS) FOR WALL TYPE TAGS AND DIMENSIONS FOR EACH UNIT TYPE.
 - NEW STAIR EXTENSIONS TO BE CONCRETE FILLED METAL PANELS BETWEEN 2" x 12" TUBE STEEL STRINGERS AND 4" CONCRETE/FORM DECK LANDING.
 - ALL STAIRS SHALL HAVE HANDRAILS ON BOTH SIDES, TYP. TOP OF ALL HANDRAILS TO BE 36" A.F.F. TOP OF ALL GUARDRAILS TO BE 42" A.F.F.
 - PROVIDE 12" HANDRAIL EXTENSIONS AT TOP & BOTTOM OF ALL NEW & EXISTING STAIRS & RAMPS.
 - ALL BALCONY DOOR THRESHOLDS SHALL BE ADA COMPLIANT.

- FLOOR PLAN KEY NOTES:**
- > 3 HOUR RATED SPRAY FIREPROOFING ON ALL COLUMNS, BEAMS AND FLOOR DECK ABOVE - BASEMENT AND FIRST FLOOR. SEE-A ONLY. SEE DETAILS 8 & 8A11R.
 - > CONCRETE TRAFFIC PROTECTION BASE AT COLUMNS.
 - > INTAKE AIR LOUVER. SEE MECH.
 - > EXHAUST AIR LOUVER. SEE MECH.
 - > NEW OPENINGS THRU EXISTING FOUNDATION WALL: GARAGE DOORS, MAIN DOOR & LOUVER.
 - > NEW RAMP AS REQUIRED - SEE SECTION SA301.
 - > NEW HEATED CONC ENTRANCE DRIVE & RETAINING WALLS.
 - > GUARDRAIL PER CODE AT TOP OF RETAINING WALL. EXISTING TUNNEL. REMOVE LID, INFILL W/ SAND & NEW CONC FLOOR PATCH.
 - > NEW CONC FLOOR AREA INFILL OR PATCH (SHOWN HATCHED) SEE STRUCTURAL.
 - > NEW MOP SINK - SEE PLUMBING.
 - > NEW CONC FLOOR AREA PITCHED TO NEW FLOOR DRAIN. (BKE WASH).
 - > NOT USED.
 - > NEW FIREWALL EXTENTS.
 - > ADD HANDRAILS AND HANDRAIL EXTENSIONS TO EXISTING STAIR TOWERS TO REMAIN.
 - > VOID SPACE BEHIND STAIR (NOT A CHASE).
 - > NEW ENTRANCE CANOPY.
 - > RECESSED BALCONY SEE-A, 1ST, 2ND & 3RD FLOORS.
 - > PRIVACY PARTITION W/ HORIZ WOOD BOARDS TO 6'-0" HIGH.
 - > 2 HOUR RATED DUCT CHASE.
 - > EXHAUST GRILLE THRU EXISTING BUILDING EXTERIOR WALL. COORDINATE W/ MECH.
 - > LAUNDRY CLOTHES DRYER VENTING THRU EXISTING BUILDING EXTERIOR WALL. COORDINATE W/ MECH.
 - > UTILITY SINK - SEE PLUMBING.
 - > (LAUNDROMAT) DRYERS.
 - > (LAUNDROMAT) WASHERS.
 - > EXISTING 2 HOUR RATED MASONRY CHASE TO REMAIN. FUTURE AUTOMATIC DOOR OPERATOR / ACTUATOR PEDESTAL. LOCATION, VERIFY REQUIREMENTS.
 - > WIRE STORAGE COMPARTMENTS.
 - > 2x4 WOOD STUDS TO 8'-0" W/O/SB SHEATHING AND DOOR. WIRE MESH SECURITY TOPS.
 - > APARTMENT UNIT TYPE DESIGNATION. SEE A400 SHEETS.
 - > 4TH FLOOR BALCONY. EPDM SYSTEM, WALKWAY MATS & DRAINS.
 - > CLOSET FOR WATER HEATER IN LAUNDROMAT.
 - > 4" CMU AROUND STEEL COLUMNS AT FIREWALL.
 - > REMOVE VINYL WALL COVERING AT STAIR TOWER, PATCH PLASTER AND PAINT.
 - > EXISTING ELEVATOR SHAFT & ENTRANCES TO REMAIN. EXTEND SHAFT TO NEW 4TH FLOOR. NEW CAR & EQUIP. X INDICATES AREA OPEN TO ABOVE.
 - > X INDICATES AREA OPEN TO BELOW.
 - > REFERENCE LINE OF PARAPET/BALCONY RAIL BELOW.
 - > NEW SUSPENDED BALCONY.
 - > BASKETBALL COURT PAVER SYSTEM & FENCING PER CODE.
 - > NEW EPDM ROOF SYSTEM ON EXISTING CONC PLANK DECK. (R2)
 - > NEW CONC FLOOR AREA PITCHED TO NEW TRENCH DRAIN.
 - > REMOVAL OF BUILDING COLUMN AND NEW SUPPORT BEAMS. SEE STRUCTURAL.
 - > VERIFY SIZE OF DUCT ENCLOSURE REQ'D WITH MECHANICAL (NOT A CHASE).
 - > 2x6 WOOD STUD WALL/WIRE RACKWAY. VERIFY REQUIREMENTS W/ ELECTRICAL - VERIFY SHEATHING & SOUND. CAP FLASH.
 - > CONC PAD AND SITE FENCING - VERIFY.
 - > NOT USED.
 - > REMOVE PORTION OF EXISTING GRATE AND AREAWALL FOR INTAKE AIR - INFILL PORTION OF AREAWALL.
 - > NEW STAIRWAY INTERRUPTION GATE.
 - > STEEL LADDER ATTACHED TO CMU WALL TO HATCH ABOVE.
 - > 1 HOUR RATED ASSEMBLY AT COLUMNS - SEE DETAIL 11A211R.
 - > 1 HOUR RATED SPRAY FIREPROOFING ON ALL COLUMNS AND BEAMS - SEE DETAILS 5, 8, 10 & 11 SHEET A211R.
 - > FRP WAINSCOT TO 48" AFF.
 - > PLYWOOD WAINSCOT TO 48" AFF.
 - > 1 HOUR RATED SPRAY FIREPROOFING ON BEAMS ABOVE SEE DETAIL 10A211R EXCEPT AS NOTED.
 - > 1 HOUR RATED TOP TO BOTTOM FIREPROOFING ON BEAMS ABOVE AT EXTERIOR WALL. SEE DETAIL 8A211R.

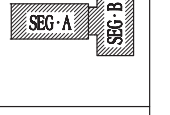


HSR ASSOCIATES INC.
100 MELVAUKEE STREET
LA CROSSE, WISCONSIN
PHONE: 608.784.1810
FAX: 608.782.5884
WEB SITE: www.hsrassociates.com

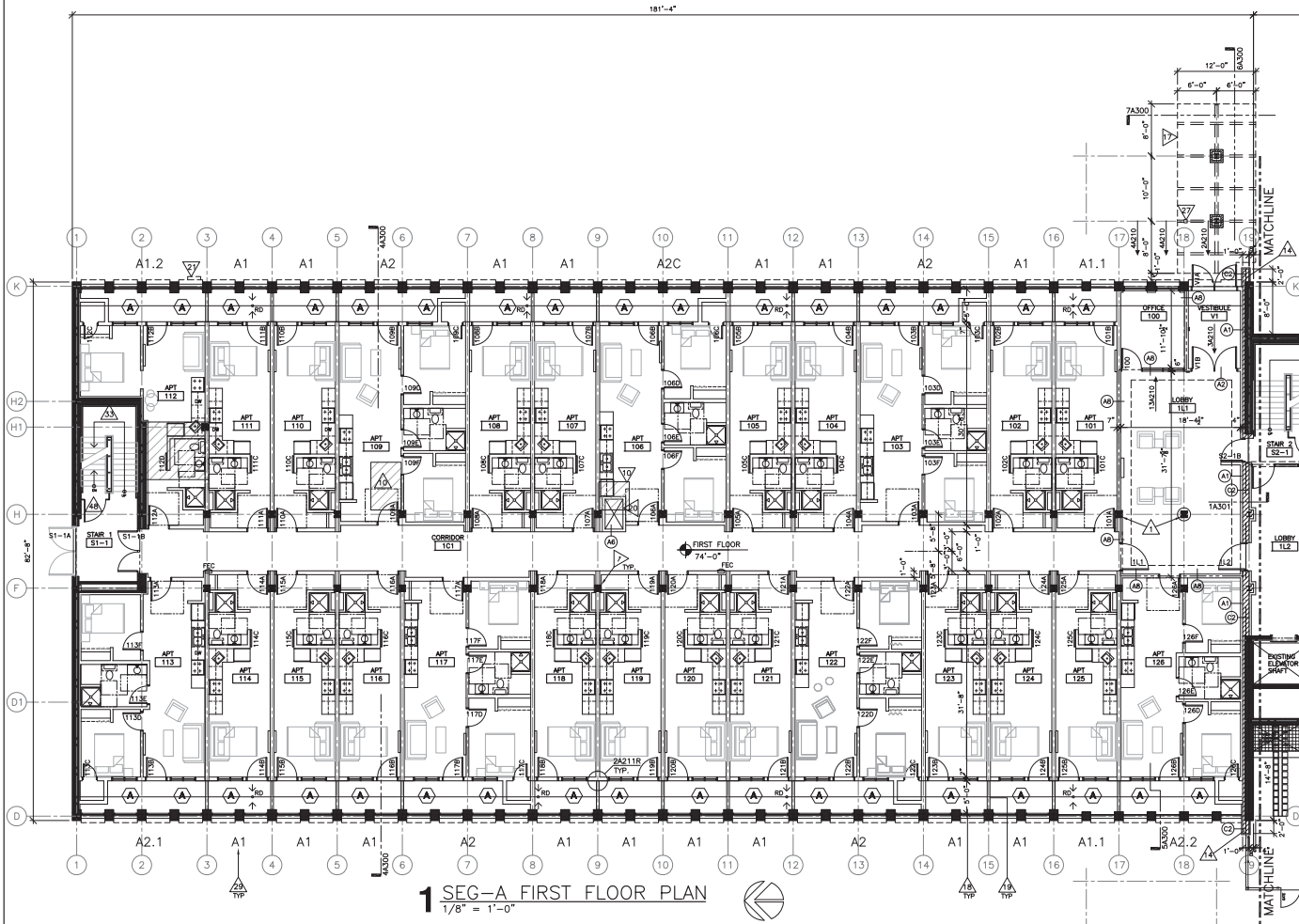
Project Title: THE HUB ON 6TH
Project Location: 415 NORTH 6TH STREET
LA CROSSE, WISCONSIN
Sheet Title: SEG-B BASEMENT FLOOR PLAN

HSR Project Number: N011
Project Date: JULY 27, 2017

Drawn By: Kampa



Last Update: 11/2/2017
A101R1



- FLOOR PLAN GENERAL NOTES:**
- SYMBOL INDICATES WALL TYPE - SEE SHEET A211 FOR WALL TYPE DETAILS.
 - INSTALL WOOD BLOCKING BETWEEN STUDS AS REQUIRED FOR TV'S, CASEWORK, GRAB BARS & SHOWER SEATS. SEE GEN NOTE F ON SHEET A400.
 - NEW EXTERIOR WINDOW TYPES INDICATED ON FLOOR PLANS. SEE A210 FOR EXTERIOR WINDOW TYPES.
 - POWDERCOAT PAINT ALL EXPOSED EXTERIOR STEEL.
 - SEE ENLARGED UNIT PLANS (A400 SERIES SHEETS) FOR WALL TYPE TAGS AND DIMENSIONS FOR EACH UNIT TYPE.
 - NEW STAR EXTENSIONS TO BE CONCRETE FILLED METAL PANELS BETWEEN 2" x 12" TUBE STEEL STRINGERS AND 4" CONCRETE/FORM DECK LANDING.
 - ALL STAIRS SHALL HAVE HANDRAILS ON BOTH SIDES, TYP.
 - TOP OF ALL HANDRAILS TO BE 36" A.F.F.
 - TOP OF ALL GUARDRAILS TO BE 42" A.F.F.
 - PROVIDE 12" HANDRAIL EXTENSIONS AT TOP & BOTTOM OF ALL NEW & EXISTING STAIRS & RAMPS.
 - ALL BALCONY DOOR THRESHOLDS SHALL BE ADA COMPLIANT.

- FLOOR PLAN KEY NOTES:**
- > 3 HOUR RATED SPRAY FIREPROOFING ON ALL COLUMNS, BEAMS AND FLOOR DECK ABOVE - BALCONY AND FIRST FLOOR. SEE-A ONLY. SEE DETAILS 8 & 8A11R.
 - > CONCRETE TRAFFIC PROTECTION BASE AT COLUMNS.
 - > INTAKE AIR LOUVER. SEE MECH.
 - > EXHAUST AIR LOUVER. SEE MECH.
 - > NEW OPENINGS THRU EXISTING FOUNDATION WALL: GARAGE DOORS, MAIN DOOR & LOUVER.
 - > NEW RAMP AS REQUIRED - SEE SECTION S4301.
 - > NEW HEATED CONC ENTRANCE DRIVE & RETAINING WALLS.
 - > GUARDRAIL PER CODE AT TOP OF RETAINING WALL.
 - > EXISTING TUNNEL: REMOVE LID, INFILL W/ SAND & NEW CONC FLOOR PATCH.
 - > NEW CONC FLOOR AREA INFILL OR PATCH (SHOWN HATCHED) SEE STRUCTURAL.
 - > NEW MOP SINK - SEE PLUMBING.
 - > NEW CONC FLOOR AREA PITCHED TO NEW FLOOR DRAIN. (SEE MESH).
 - > NOT USED.
 - > NEW FIREWALL EXTENTS.
 - > ADD HANDRAILS AND HANDRAIL EXTENSIONS TO EXISTING STAIR TOWERS TO REMAIN.
 - > VOID SPACE BEHIND STAR (NOT A CHASE).
 - > NEW ENTRANCE CANOPY.
 - > RECESSED BALCONY SEE-A, 1ST, 2ND & 3RD FLOORS.
 - > PRIVACY PARTITION W/ HORIZ WOOD BOARDS TO 6'-0" HIGH.
 - > 2 HOUR RATED DUCT CHASE.
 - > EXHAUST GRILLE THRU EXISTING BUILDING EXTERIOR WALL. COORDINATE W/ MECH.
 - > LAUNDRY CLOTHES DRYER VENTING THRU EXISTING BUILDING EXTERIOR WALL. COORDINATE W/ MECH.
 - > UTILITY SINK - SEE PLUMBING.
 - > (LAUNDRY) DRIVERS.
 - > (LAUNDRY) WASHERS.
 - > EXISTING 2 HOUR RATED MASONRY CHASE TO REMAIN. FUTURE AUTOMATIC DOOR OPERATOR / ACTUATOR PEDESTAL LOCATION. VERIFY REQUIREMENTS.
 - > WIRE STORAGE COMPARTMENTS.
 - > 2x4 WOOD STUDS TO 8'-0" W/O/SB SHEATHING AND DOOR. WIRE MESH SECURITY TOPS.
 - > APARTMENT UNIT TYPE DESIGNATION. SEE A400 SHEETS.
 - > 4TH FLOOR BALCONY: EPDM SYSTEM, WALKWAY MATS & DRAINS.
 - > CLOSET FOR WATER HEATER IN LAUNDRY/ROM.
 - > 4" CMU AROUND STEEL COLUMNS AT FIREWALL.
 - > REMOVE VINYL WALL COVERING AT STAIR TOWER, PATCH PLASTER AND PAINT.
 - > EXISTING ELEVATOR SHAFT & ENTRANCES TO REMAIN. EXTEND SHFT TO NEW 4TH FLOOR. NEW CAR & EQUIP.
 - > X INDICATES AREA OPEN TO ABOVE.
 - > X INDICATES AREA OPEN TO BELOW.
 - > REFERENCE LINE OF PARAPET/BALCONY RAIL BELOW.
 - > NEW SUSPENDED BALCONY.
 - > BASKETBALL COURT PAVER SYSTEM & FENCING PER CODE.
 - > NEW EPDM ROOF SYSTEM ON EXISTING CONC PLANK DECK. (R28)
 - > NEW CONC FLOOR AREA PITCHED TO NEW TRENCH DRAIN.
 - > REMOVAL OF BUILDING COLUMN AND NEW SUPPORT BEAMS. SEE STRUCTURAL.
 - > VERIFY SIZE OF DUCT ENCLOSURE REQ'D WITH MECHANICAL (NOT A CHASE).
 - > 2x6 WOOD STUD WALL/WIRE RACEWAY. VERIFY REQUIREMENTS W/ ELECTRICAL. VERIFY SHEATHING & SOILING. CAP FLASH.
 - > CONC PAD AND SITE FENCING - VERIFY.
 - > NOT USED.
 - > REMOVE PORTION OF EXISTING GRATE AND AREAWALL FOR INTAKE AIR - INFILL PORTION OF AREAWALL.
 - > NEW STAIRWAY INTERRUPTION GATE.
 - > STEEL LADDER ATTACHED TO CMU WALL TO HATCH ABOVE.
 - > 1 HOUR RATED ASSEMBLY AT COLUMNS - SEE DETAIL 11A211R.
 - > 1 HOUR RATED SPRAY FIREPROOFING ON ALL COLUMNS AND BEAMS - SEE DETAILS 5, 8, 10 & 11 SHEET A211R.
 - > FRP WANGSCOT TO 48" AFF.
 - > PLYWOOD WANGSCOT TO 48" AFF.
 - > 1 HOUR RATED SPRAY FIREPROOFING ON BEAMS ABOVE SEE DETAIL 10A211R EXCEPT AS NOTED.
 - > 1 HOUR RATED TOP TO BOTTOM FIREPROOFING ON BEAMS ABOVE AT EXTERIOR WALL. SEE DETAIL 8A211R.

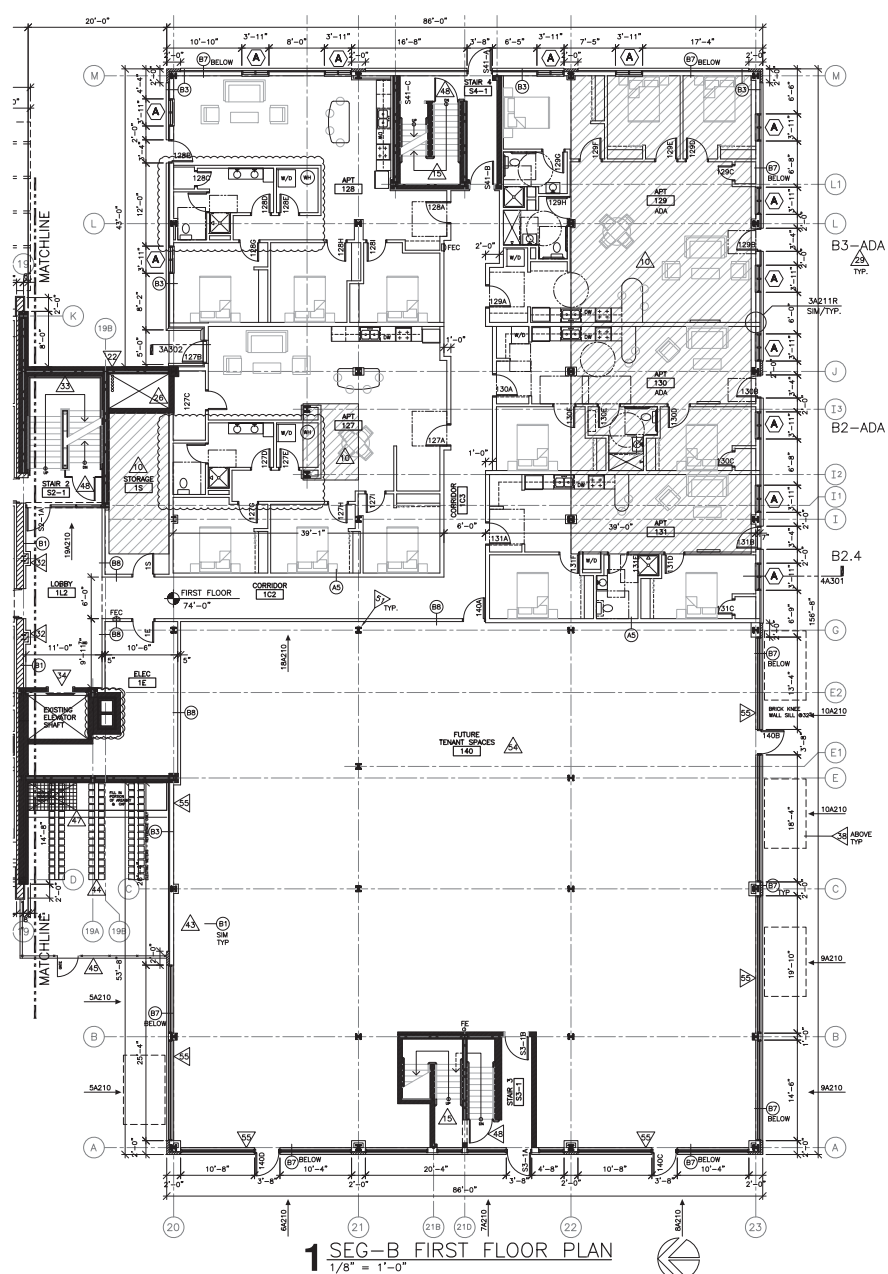
ARCHITECTURE
ENGINEERING
INTERIOR DESIGN

HSR ASSOCIATES INC.
100 MILWAUKEE STREET
LA CROSSE, WISCONSIN
PHONE: 608.782.8830
FAX: 608.782.8844
WEB SITE: www.hsrassociates.com

Project Title: THE HUB ON 6TH
Project Location: 415 NORTH 6TH STREET
LA CROSSE, WISCONSIN
Sheet Title: SEG-A FIRST FLOOR PLAN

Project Number: H011
Project Date: JULY 27, 2017
Drawn By: Kampa
Key Plan: SEG-A, SEG-B

Last Update: 10/24/2017
A102R1



- FLOOR PLAN GENERAL NOTES:**
- SYMBOL INDICATES WALL TYPE - SEE SHEET A211 FOR WALL TYPE DETAILS.
 - INSTALL WOOD BLOCKING BETWEEN STUDS AS REQUIRED FOR TV'S, CASEWORK, GRAB BARS & SHOWER SEATS. SEE GEN NOTE F ON SHEET A400.
 - NEW EXTERIOR WINDOW TYPES INDICATED ON FLOOR PLANS. SEE A210 FOR EXTERIOR WINDOW TYPES.
 - POWDERCOAT PAINT ALL EXPOSED EXTERIOR STEEL.
 - SEE ENLARGED UNIT PLANS (A400 SERIES SHEETS) FOR WALL TYPE TAGS AND DIMENSIONS FOR EACH UNIT TYPE.
 - NEW STAR EXTENSIONS TO BE CONCRETE FILLED METAL PANELS BETWEEN 2" x 12" TUBE STEEL STRINGERS AND 4" CONCRETE/FORM DECK LANDING.
 - ALL STAIRS SHALL HAVE HANDRAILS ON BOTH SIDES, TYP.
 - TOP OF ALL HANDRAILS TO BE 36" A.F.F.
 - TOP OF ALL GUARDRAILS TO BE 42" A.F.F.
 - PROVIDE 12" HANDRAIL EXTENSIONS AT TOP & BOTTOM OF ALL NEW & EXISTING STAIRS & RAMPS.
 - ALL BALCONY DOOR THRESHOLDS SHALL BE ADA COMPLIANT.

- FLOOR PLAN KEY NOTES:**
- > 3 HOUR RATED SPRAY FIREPROOFING ON ALL COLUMNS, BEAMS AND FLOOR DECK ABOVE - BALCONY AND FIRST FLOOR. SEE-A ONLY. SEE DETAILS 8 & 8A11R.
 - > CONCRETE TRAFFIC PROTECTION BASE AT COLUMNS.
 - > INTAKE AIR LOUVER. SEE MECH.
 - > EXHAUST AIR LOUVER. SEE MECH.
 - > NEW OPENINGS THRU EXISTING FOUNDATION WALL: GARAGE DOORS, MAIN DOOR & LOUVER.
 - > NEW RAMP AS REQUIRED - SEE SECTION S4301.
 - > NEW HEATED CONC ENTRANCE DRIVE & RETAINING WALLS.
 - > GUARDRAIL PER CODE AT TOP OF RETAINING WALL.
 - > EXISTING TUNNEL: REMOVE LID, INFILL W/ SAND & NEW CONC FLOOR PATCH.
 - > NEW CONC FLOOR AREA INFILL OR PATCH (SHOWN HATCHED) SEE STRUCTURAL.
 - > NEW MOP SINK - SEE PLUMBING.
 - > NEW CONC FLOOR AREA PITCHED TO NEW FLOOR DRAIN. (SEE MESH).
 - > NOT USED.
 - > NEW FIREWALL EXTENTS.
 - > ADD HANDRAILS AND HANDRAIL EXTENSIONS TO EXISTING STAIR TOWERS TO REMAIN.
 - > VOID SPACE BEHIND STAR (NOT A CHASE).
 - > NEW ENTRANCE CANOPY.
 - > RECESSED BALCONY SEE-A, 1ST, 2ND & 3RD FLOORS.
 - > PRIVACY PARTITION W/ HORIZ WOOD BOARDS TO 6'-0" HIGH.
 - > 2 HOUR RATED DUCT CHASE.
 - > EXHAUST GRILLE THRU EXISTING BUILDING EXTERIOR WALL. COORDINATE W/ MECH.
 - > LAUNDRY CLOTHES DRYER VENTING THRU EXISTING BUILDING EXTERIOR WALL. COORDINATE W/ MECH.
 - > UTILITY SINK - SEE PLUMBING.
 - > (LAUNDRY) DRIVERS.
 - > (LAUNDRY) WASHERS.
 - > EXISTING 2 HOUR RATED MASONRY CHASE TO REMAIN. FUTURE AUTOMATIC DOOR OPERATOR / ACTUATOR PEDESTAL LOCATION. VERIFY REQUIREMENTS.
 - > WIRE STORAGE COMPARTMENTS.
 - > 2x4 WOOD STUDS TO 8'-0" W/O/SB SHEATHING AND DOOR. WIRE MESH SECURITY TOPS.
 - > APARTMENT UNIT TYPE DESIGNATION. SEE A400 SHEETS.
 - > 4TH FLOOR BALCONY: EPDM SYSTEM, WALKWAY MATS & DRAINS.
 - > CLOSET FOR WATER HEATER IN LAUNDRY/ROM.
 - > 4" CMU AROUND STEEL COLUMNS AT FIREWALL.
 - > REMOVE VINYL WALL COVERING AT STAIR TOWER, PATCH PLASTER AND PAINT.
 - > EXISTING ELEVATOR SHAFT & ENTRANCES TO REMAIN. EXTEND SHFT TO NEW 4TH FLOOR. NEW CAR & EQUIP.
 - > X INDICATES AREA OPEN TO ABOVE.
 - > X INDICATES AREA OPEN TO BELOW.
 - > REFERENCE LINE OF PARAPET/BALCONY RAIL BELOW.
 - > NEW SUSPENDED BALCONY.
 - > BASKETBALL COURT PAVER SYSTEM & FENCING PER CODE.
 - > NEW EPDM ROOF SYSTEM ON EXISTING CONC PLANK DECK. (R28)
 - > NEW CONC FLOOR AREA PITCHED TO NEW TRENCH DRAIN.
 - > REMOVAL OF BUILDING COLUMN AND NEW SUPPORT BEAMS. SEE STRUCTURAL.
 - > VERIFY SIZE OF DUCT ENCLOSURE REQ'D WITH MECHANICAL (NOT A CHASE).
 - > 2x6 WOOD STUD WALL/WIRE RACEWAY. VERIFY REQUIREMENTS W/ ELECTRICAL. VERIFY SHEATHING & SOILING. CAP FLASH.
 - > CONC PAD AND SITE FENCING - VERIFY.
 - > NOT USED.
 - > REMOVE PORTION OF EXISTING GRATE AND AREAWALL FOR INTAKE AIR - INFILL PORTION OF AREAWALL.
 - > NEW STAIRWAY INTERRUPTION GATE.
 - > STEEL LADDER ATTACHED TO CMU WALL TO HATCH ABOVE.
 - > 1 HOUR RATED ASSEMBLY AT COLUMNS - SEE DETAIL 11A211R.
 - > 1 HOUR RATED SPRAY FIREPROOFING ON ALL COLUMNS AND BEAMS - SEE DETAILS 5, 8, 10 & 11 SHEET A211R.
 - > FRP WANGSCOT TO 48" AFF.
 - > PLYWOOD WANGSCOT TO 48" AFF.
 - > 1 HOUR RATED SPRAY FIREPROOFING ON BEAMS ABOVE SEE DETAIL 10A211R EXCEPT AS NOTED.
 - > 1 HOUR RATED TOP TO BOTTOM FIREPROOFING ON BEAMS ABOVE AT EXTERIOR WALL. SEE DETAIL 8A211R.

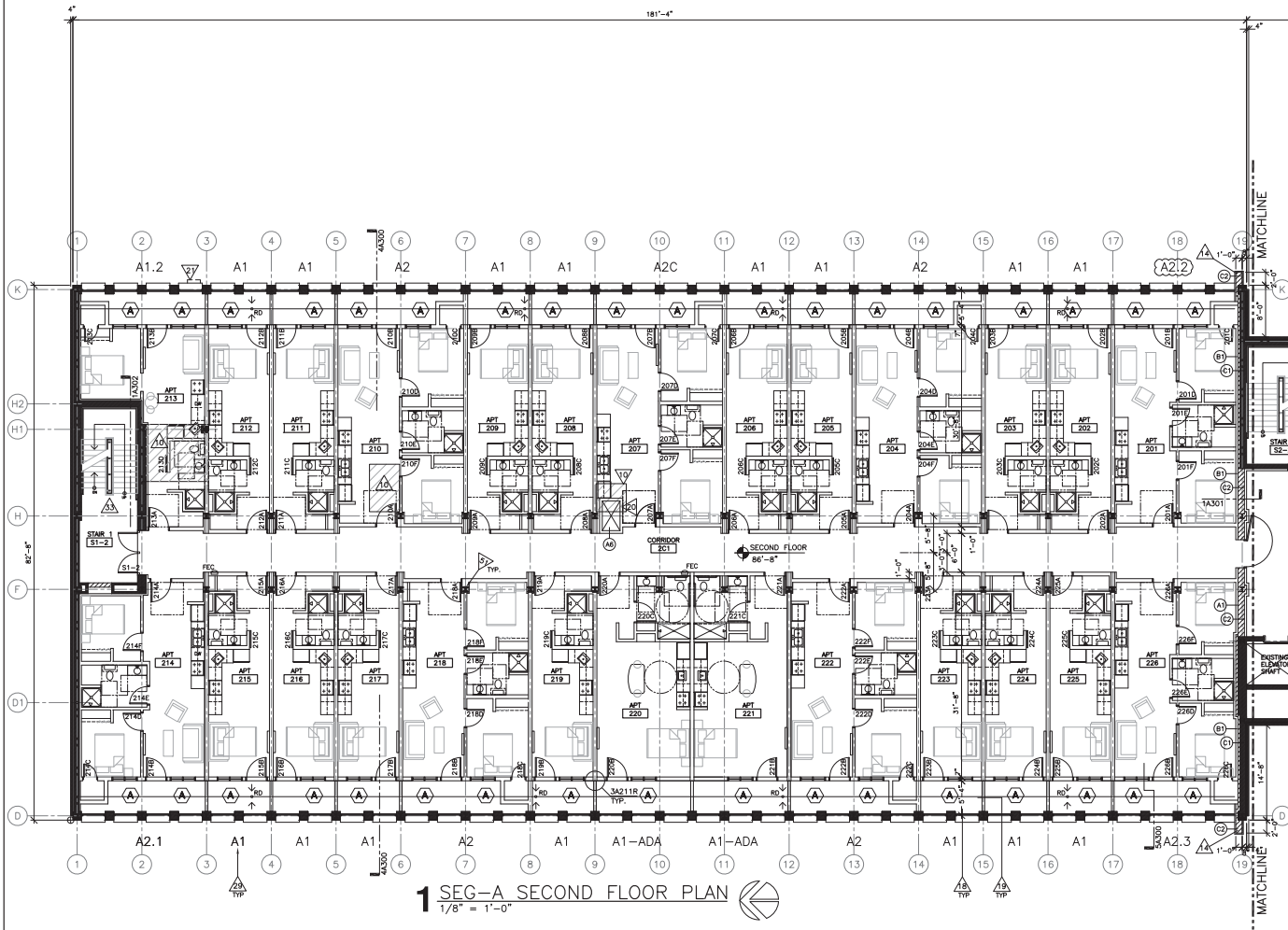
ARCHITECTURE
ENGINEERING
INTERIOR DESIGN

HSR ASSOCIATES INC.
100 MILWAUKEE STREET
LA CROSSE, WISCONSIN
PHONE: 608.782.8830
FAX: 608.782.8844
WEB SITE: www.hsrassociates.com

Project Title: THE HUB ON 6TH
Project Location: 415 NORTH 6TH STREET
LA CROSSE, WISCONSIN
Sheet Title: SEBB FIRST FLOOR PLAN

Project Number: H011
Project Date: JULY 27, 2017
Drawn By: Kampa
Key Plan: SEG-A, SEG-B

Last Update: 10/25/2017
A103R1



1 SEG-A SECOND FLOOR PLAN
1/8" = 1'-0"

- FLOOR PLAN GENERAL NOTES:**
- A. SYMBOL INDICATES WALL TYPE - SEE SHEET A211 FOR WALL TYPE DETAILS.
 - B. INSTALL WOOD BLOCKING BETWEEN STUDS AS REQUIRED FOR TV'S, CASEWORK, GRAB BARS & SHOWER SEATS. SEE GEN NOTE F ON SHEET A400.
 - C. NEW EXTERIOR WINDOW TYPES INDICATED ON FLOOR PLANS. SEE A210 FOR EXTERIOR WINDOW TYPES.
 - D. POWDERCOAT PAINT ALL EXPOSED EXTERIOR STEEL.
 - E. SEE ENLARGED UNIT PLANS (A400 SERIES SHEETS) FOR WALL TYPE TAGS AND DIMENSIONS FOR EACH UNIT TYPE.
 - F. NEW STAR EXTENSIONS TO BE CONCRETE FILLED METAL PANELS BETWEEN 2" x 2" TUBE STEEL STRINGERS AND 4" CONCRETE/FORM DECK LANDING.
 - G. ALL STAIRS SHALL HAVE HANDRAILS ON BOTH SIDES, TYP. TOP OF ALL HANDRAILS TO BE 36" A.F.F.
 - H. PROVIDE 12" HANDRAIL EXTENSIONS AT TOP & BOTTOM OF ALL NEW & EXISTING STAIRS & RAMPS.
 - I. ALL BALCONY DOOR THRESHOLDS SHALL BE ADA COMPLIANT.

- FLOOR PLAN KEY NOTES:**
- > 3 HOUR RATED SPRAY FIREPROOFING ON ALL COLUMNS, BEAMS AND FLOOR DECK ABOVE - BASEMENT AND FIRST FLOOR SEG-A ONLY. SEE DETAILS 8 & 9A.11R.
 - > CONCRETE TRAFFIC PROTECTION BASE AT COLUMNS.
 - > INTAKE AIR LOUVER. SEE MECH.
 - > EXHAUST AIR LOUVER. SEE MECH.
 - > NEW OPENINGS THRU EXISTING FOUNDATION WALL: GARAGE DOORS, MAIN DOOR & LOUVER.
 - > NEW RAMP AS REQUIRED - SEE SECTION SA301.
 - > NEW HEATED CONC ENTRANCE DRIVE & RETAINING WALLS.
 - > GUARDRAIL PER CODE AT TOP OF RETAINING WALL.
 - > EXISTING TUNNEL: REMOVE LID, INFILL W/ SAND & NEW CONC FLOOR PATCH.
 - > NEW CONC FLOOR AREA INFILL OR PATCH (SHOWN HATCHED) SEE STRUCTURAL.
 - > NEW MOP SINK - SEE PLUMBING.
 - > NEW CONC FLOOR AREA PITCHED TO NEW FLOOR DRAIN. (SEE MESH).
 - > NOT USED.
 - > NEW FIREWALL EXTENTS.
 - > ADD HANDRAILS AND HANDRAIL EXTENSIONS TO EXISTING STAIR TOWERS TO REMAIN.
 - > VOID SPACE BEHIND STAR (NOT A CHASE).
 - > NEW ENTRANCE CANOPY.
 - > RECESSED BALCONY SEG-A, 1ST, 2ND & 3RD FLOORS.
 - > PRIVACY PARTITION W/ HORIZ WOOD BOARDS TO 6'-0" HIGH.
 - > 2 HOUR RATED DUCT CHASE.
 - > EXHAUST GRILLE THRU EXISTING BUILDING EXTERIOR WALL. COORDINATE W/ MECH.
 - > LAUNDRY CLOTHES DRYER VENTING THRU EXISTING BUILDING EXTERIOR WALL. COORDINATE W/ MECH.
 - > UTILITY SINK - SEE PLUMBING.
 - > (LAUNDRY) DRYERS.
 - > (LAUNDRY) WASHERS.
 - > EXISTING 2 HOUR RATED MASONRY CHASE TO REMAIN. FUTURE AUTOMATIC DOOR OPERATOR / ACTUATOR PEDESTAL LOCATION. VERIFY REQUIREMENTS.
 - > WIRE STORAGE COMPARTMENTS.
 - > 2x4 WOOD STUDS TO 8'-0" W/O/SB SHEATHING AND DOOR. WIRE MESH SECURITY TOPS.
 - > APARTMENT UNIT TYPE DESIGNATION. SEE A400 SHEETS.
 - > 4TH FLOOR BALCONY: EPDM SYSTEM, WALKWAY MATS & DRAIN.
 - > CLOSET FOR WATER HEATER IN LAUNDRY/STAIR.
 - > 4" CMU AROUND STEEL COLUMNS AT FIREWALL.
 - > REMOVE VINYL WALL COVERING AT STAIR TOWER, PATCH PLASTER AND PAINT.
 - > EXISTING ELEVATOR SHAFT & ENTRANCES TO REMAIN. EXTEND SHFT TO NEW 4TH FLOOR. NEW CAR & EQUIP. X INDICATES AREA OPEN TO ABOVE.
 - > X INDICATES AREA OPEN TO BELOW.
 - > REFERENCE LINE OF PARAPET/BALCONY RAIL BELOW.
 - > NEW SUSPENDED BALCONY.
 - > BASKETBALL COURT PAVER SYSTEM & FENCING PER CODE.
 - > NEW EPDM ROOF SYSTEM ON EXISTING CONC PLANK DECK. (R28)
 - > NEW CONC FLOOR AREA PITCHED TO NEW TRENCH DRAIN.
 - > REMOVAL OF BUILDING COLUMN AND NEW SUPPORT BEAMS. SEE STRUCTURAL.
 - > VERIFY SIZE OF DUCT ENCLOSURE REQ'D WITH MECHANICAL (NOT A CHASE).
 - > 2x4 WOOD STUD WALL/WIRE RACKWAY. VERIFY REQUIREMENTS W/ ELECTRICAL. VERIFY SHEATHING & SOUND. CAP FLASH.
 - > CONC PAD AND SITE FENCING - VERIFY.
 - > NOT USED.
 - > REMOVE PORTION OF EXISTING GRATE AND AREAWALL FOR INTAKE AIR - INFILL PORTION OF AREAWALL.
 - > NEW STAIRWAY INTERRUPTION GATE.
 - > STEEL LADDER ATTACHED TO CMU WALL TO HATCH ABOVE.
 - > 1 HOUR RATED ASSEMBLY AT COLUMNS - SEE DETAIL 11A211R.
 - > 1 HOUR RATED SPRAY FIREPROOFING ON ALL COLUMNS AND BEAMS - SEE DETAILS 8, 9, 10 & 11 SHEET A211R.
 - > FRP WAINSCOT TO 48" AFF.
 - > PLYWOOD WAINSCOT TO 48" AFF.
 - > 1 HOUR RATED SPRAY FIREPROOFING ON BEAMS ABOVE SEE DETAIL 10A211R EXCEPT AS NOTED.
 - > 1 HOUR RATED TOP TO BOTTOM FIREPROOFING ON BEAMS ABOVE AT EXTERIOR WALL. SEE DETAIL 9A211R.

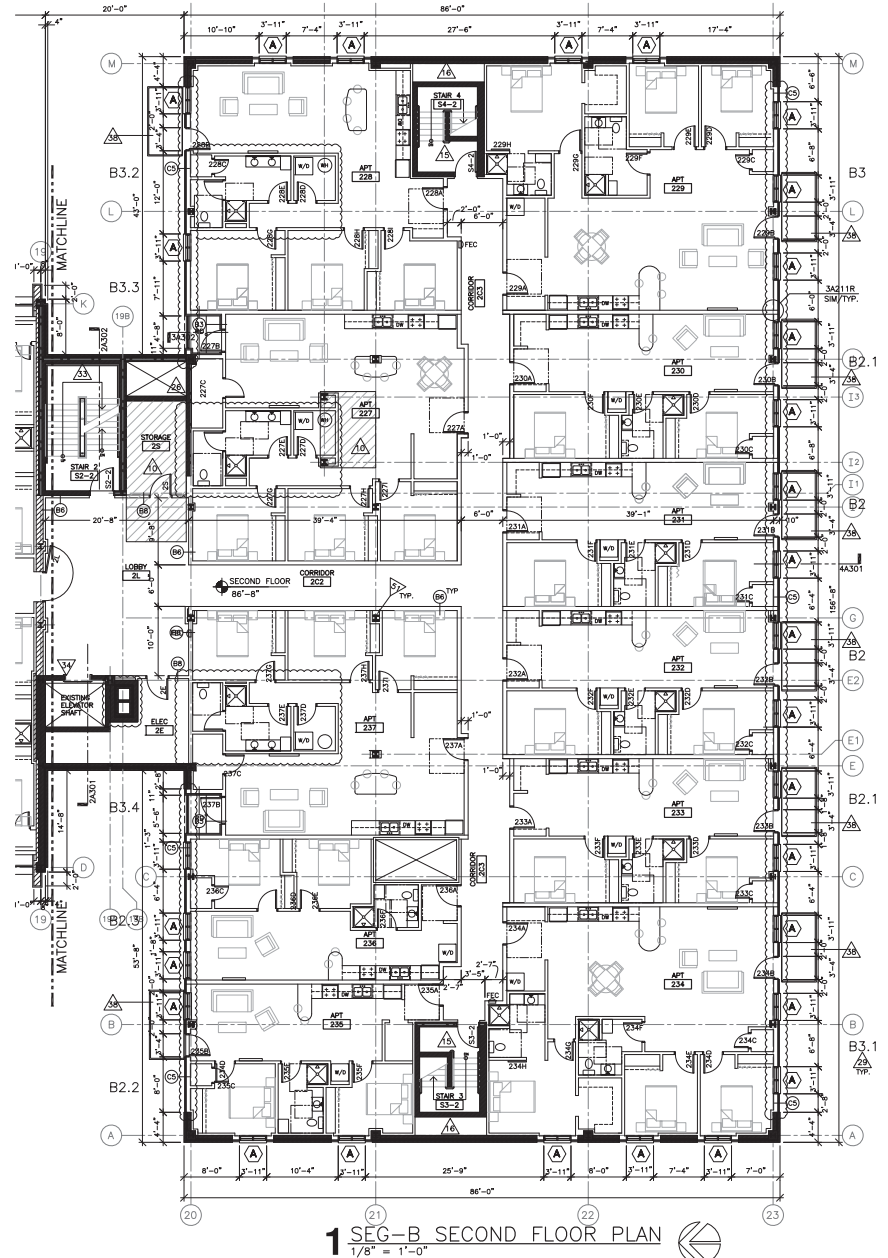
ARCHITECTURE
ENGINEERING
INTERIOR DESIGN

HSR ASSOCIATES INC.
100 MILWAUKEE STREET
LA CROSSE, WISCONSIN
PHONE: 608.784.1830
FAX: 608.782.5844
WEB SITE: www.hsrassociates.com

Project Title: **THE HUB ON 6TH**
Project Location: **415 NORTH 6TH STREET
LA CROSSE, WISCONSIN**
Sheet Title: **SEG-A SECOND FLOOR PLAN**

Project Number: **1001**
Project Date: **JULY 27, 2017**
Drawn By: **Kampa**
Key Plan:

Last Update: **10/25/2017**
A104R1



1 SEG-B SECOND FLOOR PLAN
1/8" = 1'-0"

- FLOOR PLAN GENERAL NOTES:**
- A. SYMBOL INDICATES WALL TYPE - SEE SHEET A211 FOR WALL TYPE DETAILS.
 - B. INSTALL WOOD BLOCKING BETWEEN STUDS AS REQUIRED FOR TV'S, CASEWORK, GRAB BARS & SHOWER SEATS. SEE GEN NOTE F ON SHEET A400.
 - C. NEW EXTERIOR WINDOW TYPES INDICATED ON FLOOR PLANS. SEE A210 FOR EXTERIOR WINDOW TYPES.
 - D. POWDERCOAT PAINT ALL EXPOSED EXTERIOR STEEL.
 - E. SEE ENLARGED UNIT PLANS (A400 SERIES SHEETS) FOR WALL TYPE TAGS AND DIMENSIONS FOR EACH UNIT TYPE.
 - F. NEW STAR EXTENSIONS TO BE CONCRETE FILLED METAL PANELS BETWEEN 2" x 2" TUBE STEEL STRINGERS AND 4" CONCRETE/FORM DECK LANDING.
 - G. ALL STAIRS SHALL HAVE HANDRAILS ON BOTH SIDES, TYP. TOP OF ALL HANDRAILS TO BE 36" A.F.F.
 - H. PROVIDE 12" HANDRAIL EXTENSIONS AT TOP & BOTTOM OF ALL NEW & EXISTING STAIRS & RAMPS.
 - I. ALL BALCONY DOOR THRESHOLDS SHALL BE ADA COMPLIANT.

- FLOOR PLAN KEY NOTES:**
- > 3 HOUR RATED SPRAY FIREPROOFING ON ALL COLUMNS, BEAMS AND FLOOR DECK ABOVE - BASEMENT AND FIRST FLOOR SEG-A ONLY. SEE DETAILS 8 & 9A.11R.
 - > CONCRETE TRAFFIC PROTECTION BASE AT COLUMNS.
 - > INTAKE AIR LOUVER. SEE MECH.
 - > EXHAUST AIR LOUVER. SEE MECH.
 - > NEW OPENINGS THRU EXISTING FOUNDATION WALL: GARAGE DOORS, MAIN DOOR & LOUVER.
 - > NEW RAMP AS REQUIRED - SEE SECTION SA301.
 - > NEW HEATED CONC ENTRANCE DRIVE & RETAINING WALLS.
 - > GUARDRAIL PER CODE AT TOP OF RETAINING WALL.
 - > EXISTING TUNNEL: REMOVE LID, INFILL W/ SAND & NEW CONC FLOOR PATCH.
 - > NEW CONC FLOOR AREA INFILL OR PATCH (SHOWN HATCHED) SEE STRUCTURAL.
 - > NEW MOP SINK - SEE PLUMBING.
 - > NEW CONC FLOOR AREA PITCHED TO NEW FLOOR DRAIN. (SEE MESH).
 - > NOT USED.
 - > NEW FIREWALL EXTENTS.
 - > ADD HANDRAILS AND HANDRAIL EXTENSIONS TO EXISTING STAIR TOWERS TO REMAIN.
 - > VOID SPACE BEHIND STAR (NOT A CHASE).
 - > NEW ENTRANCE CANOPY.
 - > RECESSED BALCONY SEG-A, 1ST, 2ND & 3RD FLOORS.
 - > PRIVACY PARTITION W/ HORIZ WOOD BOARDS TO 6'-0" HIGH.
 - > 2 HOUR RATED DUCT CHASE.
 - > EXHAUST GRILLE THRU EXISTING BUILDING EXTERIOR WALL. COORDINATE W/ MECH.
 - > LAUNDRY CLOTHES DRYER VENTING THRU EXISTING BUILDING EXTERIOR WALL. COORDINATE W/ MECH.
 - > UTILITY SINK - SEE PLUMBING.
 - > (LAUNDRY) DRYERS.
 - > (LAUNDRY) WASHERS.
 - > EXISTING 2 HOUR RATED MASONRY CHASE TO REMAIN. FUTURE AUTOMATIC DOOR OPERATOR / ACTUATOR PEDESTAL LOCATION. VERIFY REQUIREMENTS.
 - > WIRE STORAGE COMPARTMENTS.
 - > 2x4 WOOD STUDS TO 8'-0" W/O/SB SHEATHING AND DOOR. WIRE MESH SECURITY TOPS.
 - > APARTMENT UNIT TYPE DESIGNATION. SEE A400 SHEETS.
 - > 4TH FLOOR BALCONY: EPDM SYSTEM, WALKWAY MATS & DRAIN.
 - > CLOSET FOR WATER HEATER IN LAUNDRY/STAIR.
 - > 4" CMU AROUND STEEL COLUMNS AT FIREWALL.
 - > REMOVE VINYL WALL COVERING AT STAIR TOWER, PATCH PLASTER AND PAINT.
 - > EXISTING ELEVATOR SHAFT & ENTRANCES TO REMAIN. EXTEND SHFT TO NEW 4TH FLOOR. NEW CAR & EQUIP. X INDICATES AREA OPEN TO ABOVE.
 - > X INDICATES AREA OPEN TO BELOW.
 - > REFERENCE LINE OF PARAPET/BALCONY RAIL BELOW.
 - > NEW SUSPENDED BALCONY.
 - > BASKETBALL COURT PAVER SYSTEM & FENCING PER CODE.
 - > NEW EPDM ROOF SYSTEM ON EXISTING CONC PLANK DECK. (R28)
 - > NEW CONC FLOOR AREA PITCHED TO NEW TRENCH DRAIN.
 - > REMOVAL OF BUILDING COLUMN AND NEW SUPPORT BEAMS. SEE STRUCTURAL.
 - > VERIFY SIZE OF DUCT ENCLOSURE REQ'D WITH MECHANICAL (NOT A CHASE).
 - > 2x4 WOOD STUD WALL/WIRE RACKWAY. VERIFY REQUIREMENTS W/ ELECTRICAL. VERIFY SHEATHING & SOUND. CAP FLASH.
 - > CONC PAD AND SITE FENCING - VERIFY.
 - > NOT USED.
 - > REMOVE PORTION OF EXISTING GRATE AND AREAWALL FOR INTAKE AIR - INFILL PORTION OF AREAWALL.
 - > NEW STAIRWAY INTERRUPTION GATE.
 - > STEEL LADDER ATTACHED TO CMU WALL TO HATCH ABOVE.
 - > 1 HOUR RATED ASSEMBLY AT COLUMNS - SEE DETAIL 11A211R.
 - > 1 HOUR RATED SPRAY FIREPROOFING ON ALL COLUMNS AND BEAMS - SEE DETAILS 8, 9, 10 & 11 SHEET A211R.
 - > FRP WAINSCOT TO 48" AFF.
 - > PLYWOOD WAINSCOT TO 48" AFF.
 - > 1 HOUR RATED SPRAY FIREPROOFING ON BEAMS ABOVE SEE DETAIL 10A211R EXCEPT AS NOTED.
 - > 1 HOUR RATED TOP TO BOTTOM FIREPROOFING ON BEAMS ABOVE AT EXTERIOR WALL. SEE DETAIL 9A211R.

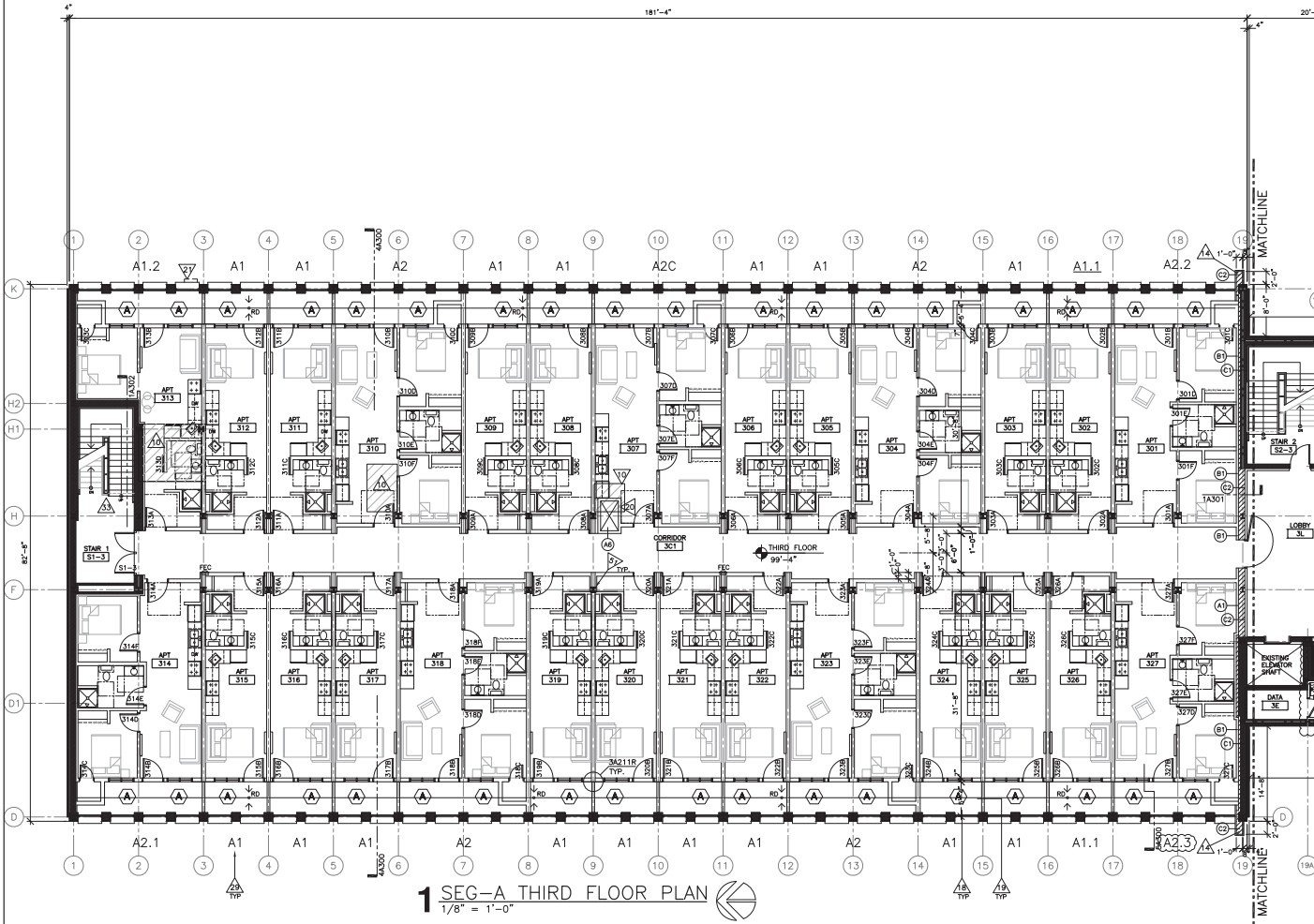
ARCHITECTURE
ENGINEERING
INTERIOR DESIGN

HSR ASSOCIATES INC.
100 MILWAUKEE STREET
LA CROSSE, WISCONSIN
PHONE: 608.784.1830
FAX: 608.782.5844
WEB SITE: www.hsrassociates.com

Project Title: **THE HUB ON 6TH**
Project Location: **415 NORTH 6TH STREET
LA CROSSE, WISCONSIN**
Sheet Title: **SEG-B SECOND FLOOR PLAN**

Project Number: **1001**
Project Date: **JULY 27, 2017**
Drawn By: **Kampa**
Key Plan:

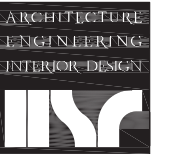
Last Update: **10/25/2017**
A105R1



1 SEG-A THIRD FLOOR PLAN
1/8" = 1'-0"

- FLOOR PLAN GENERAL NOTES:**
- SYMBOL INDICATES WALL TYPE - SEE SHEET A211 FOR WALL TYPE DETAILS.
 - INSTALL WOOD BLOCKING BETWEEN STUDS AS REQUIRED FOR TV'S, CASEWORK, GRAB BARS & SHOWER SEATS. SEE GEN NOTE F ON SHEET A400.
 - NEW EXTERIOR WINDOW TYPES INDICATED ON FLOOR PLANS. SEE A210 FOR EXTERIOR WINDOW TYPES.
 - POWDERCOAT PAINT ALL EXPOSED EXTERIOR STEEL.
 - SEE ENLARGED UNIT PLANS (A400 SERIES SHEETS) FOR WALL TYPE TAGS AND DIMENSIONS FOR EACH UNIT TYPE.
 - NEW STAR EXTENSIONS TO BE CONCRETE FILLED METAL PANS BETWEEN 2 #312 TUBE STEEL STRINGERS AND 4" CONCRETE/FORM DECK LANDING.
 - ALL STAIRS SHALL HAVE HANDRAILS ON BOTH SIDES, TYP. TOP OF ALL HANDRAILS TO BE 36" A.F.F., TOP OF ALL GUARDRAILS TO BE 42" A.F.F.
 - PROVIDE 12" HANDRAIL EXTENSIONS AT TOP & BOTTOM OF ALL NEW & EXISTING STAIRS & RAMPS.
 - ALL BALCONY DOOR THRESHOLDS SHALL BE ADA COMPLIANT.

- FLOOR PLAN KEY NOTES:**
- > 3 HOUR RATED SPRAY FIREPROOFING ON ALL COLUMNS, BEAMS AND FLOOR DECK ABOVE - BASEMENT AND FIRST FLOOR SEG-A ONLY. SEE DETAILS 6 & 8A/11B. CONCRETE TRAFFIC PROTECTION BASE AT COLUMNS.
 - > INTAKE AIR LOUVER. SEE MECH.
 - > EXHAUST AIR LOUVER. SEE MECH.
 - > NEW OPENINGS THRU EXISTING FOUNDATION WALL: GARAGE DOORS, MAIN DOOR & LOUVER.
 - > NEW RAMP AS REQUIRED - SEE SECTION SA301.
 - > NEW HEATED CONC ENTRANCE DRIVE & RETAINING WALLS.
 - > GUARDRAIL PER CODE AT TOP OF RETAINING WALL.
 - > EXISTING TUNNEL: REMOVE LID, INFILL W/ SAND & NEW CONC FLOOR PATCH.
 - > NEW CONC FLOOR AREA INFILL OR PATCH (SHOWN HATCHED) SEE STRUCTURAL.
 - > NEW MOP SINK - SEE PLUMBING.
 - > NEW CONC FLOOR AREA PITCHED TO NEW FLOOR DRAIN. (BKE WASH).
 - > NOT USED.
 - > NEW FIREWALL EXTENTS.
 - > ADD HANDRAILS AND HANDRAIL EXTENSIONS TO EXISTING STAIR TOWERS TO REMAIN.
 - > VOID SPACE BEHIND STAR (NOT A CHASE).
 - > NEW ENTRANCE CANOPY.
 - > RECESSED BALCONY SEG-A, 1ST, 2ND & 3RD FLOORS.
 - > PRIVACY PARTITION W/ HORIZ WOOD BOARDS TO 6'-0" HIGH.
 - > 2 HOUR RATED DUCT CHASE.
 - > EXHAUST GRILLE THRU EXISTING BUILDING EXTERIOR WALL. COORDINATE W/ MECH.
 - > LAUNDRY CLOTHES DRYER VENTING THRU EXISTING BUILDING EXTERIOR WALL. COORDINATE W/ MECH.
 - > UTILITY SINK - SEE PLUMBING.
 - > (LAUNDRY) DRIVERS.
 - > (LAUNDRY) WASHERS.
 - > EXISTING 2 HOUR RATED MASONRY CHASE TO REMAIN. FUTURE AUTOMATIC DOOR OPERATOR / ACTUATOR PEDESTAL LOCATION. VERIFY REQUIREMENTS.
 - > WIRE STORAGE COMPARTMENTS.
 - > 2X4 WOOD STUDS TO 8'-0" W/O/SB SHEATHING AND DOOR. WIRE MESH SECURITY TOPS.
 - > APARTMENT UNIT TYPE DESIGNATION. SEE A400 SHEETS.
 - > 4TH FLOOR BALCONY: EPDM SYSTEM, WALKWAY MATS & DRAINS.
 - > CLOSET FOR WATER HEATER IN LAUNDRY/ATM.
 - > 4" CMU AROUND STEEL COLUMNS AT FIREWALL.
 - > REMOVE VINYL WALL COVERING AT STAIR TOWER, PATCH PLASTER AND PAINT.
 - > EXISTING ELEVATOR SHAFT & ENTRANCES TO REMAIN. EXTEND SHFT TO NEW 4TH FLOOR. NEW CAR & EQP.
 - > X INDICATES AREA OPEN TO ABOVE.
 - > X INDICATES AREA OPEN TO BELOW.
 - > REFERENCE LINE OF PARAPET/BALCONY RAIL BELOW.
 - > NEW SUSPENDED BALCONY.
 - > BASKETBALL COURT PAVER SYSTEM & FENCING PER CODE.
 - > NEW EPDM ROOF SYSTEM ON EXISTING CONC PLANK DECK. (R28)
 - > NEW CONC FLOOR AREA PITCHED TO NEW TRENCH DRAIN.
 - > REMOVAL OF BUILDING COLUMN AND NEW SUPPORT BEAMS. SEE STRUCTURAL.
 - > VERIFY SIZE OF DUCT ENCLOSURE REQ'D WITH MECHANICAL (NOT A CHASE).
 - > 2X6 WOOD STUD WALL/WIRE RACEWAY. VERIFY REQUIREMENTS W/ ELECTRICAL - VERIFY SHEATHING & SOUNDING CAP FLASH.
 - > CONC PAD AND SITE FENCING - VERIFY.
 - > NOT USED.
 - > REMOVE PORTION OF EXISTING GRATE AND AREAWALL FOR INTAKE AIR - INFILL PORTION OF AREAWALL.
 - > NEW STAIRWAY INTERRUPTION GATE.
 - > STEEL LADDER ATTACHED TO CMU WALL TO HATCH ABOVE.
 - > 1 HOUR RATED ASSEMBLY AT COLUMNS - SEE DETAIL 11A211R.
 - > 1 HOUR RATED SPRAY FIREPROOFING ON ALL COLUMNS AND BEAMS - SEE DETAILS 5, 8, 10 & 11 SHEET A211R.
 - > FRP WAINSCOT TO 48" AFF.
 - > PLYWOOD WAINSCOT TO 48" AFF.
 - > 1 HOUR RATED SPRAY FIREPROOFING ON BEAMS ABOVE - SEE DETAIL 10A211R EXCEPT AS NOTED.
 - > 1 HOUR RATED TOP TO BOTTOM FIREPROOFING ON BEAMS ABOVE AT EXTERIOR WALL. SEE DETAIL A211R.

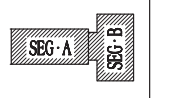


HSR ASSOCIATES INC.
100 MILWAUKEE STREET
LA CROSSE, WISCONSIN
PHONE: 608.782.5844
FAX: 608.782.5844
WEB SITE: www.hsrasociates.com

Project Title: THE HUB ON 6TH
Project Location: 415 NORTH 6TH STREET
LA CROSSE, WISCONSIN
Sheet Title: SEG-A THIRD FLOOR PLAN

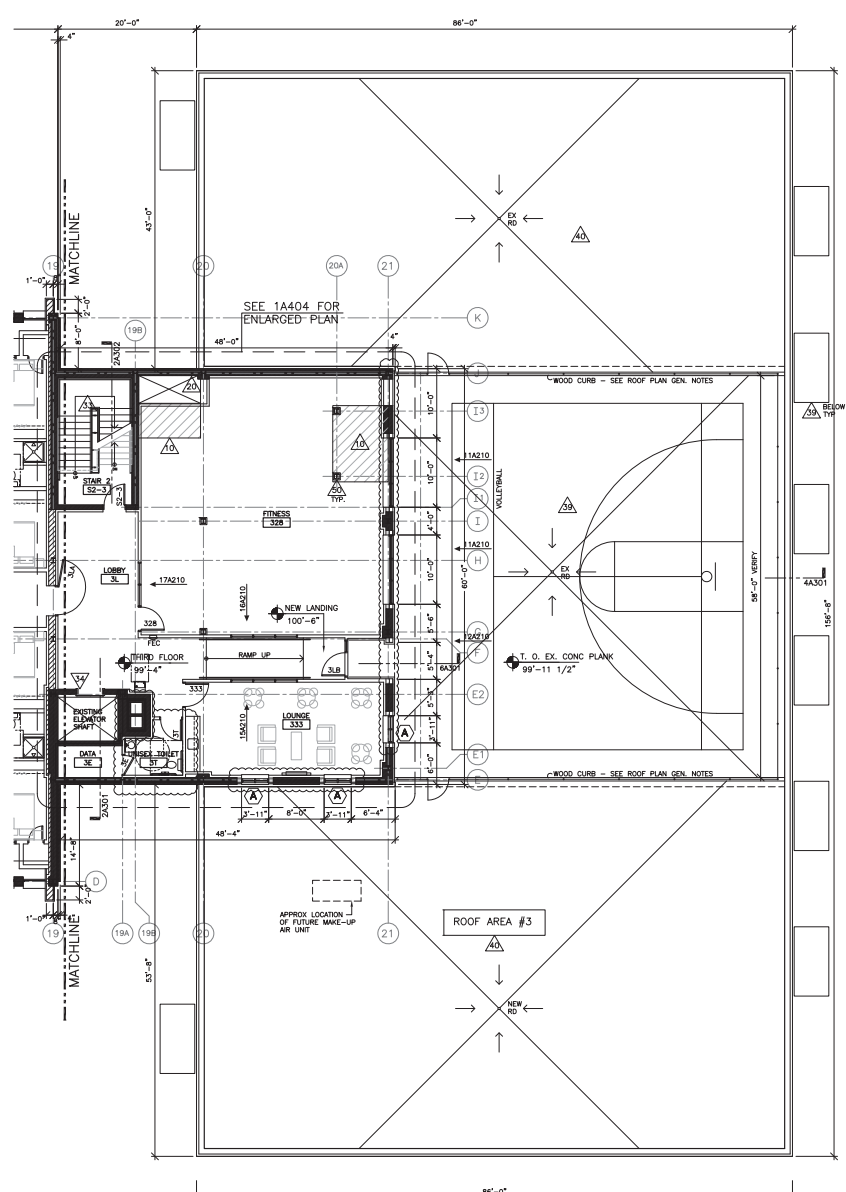
Project Number: N011
Project Date: JULY 27, 2017

Drawn By: Rampa
Key Plan:



Last Update: 10/25/2017

A106R1



1 SEG-B THIRD FLOOR PLAN
1/8" = 1'-0"

- FLOOR PLAN GENERAL NOTES:**
- SYMBOL INDICATES WALL TYPE - SEE SHEET A211 FOR WALL TYPE DETAILS.
 - INSTALL WOOD BLOCKING BETWEEN STUDS AS REQUIRED FOR TV'S, CASEWORK, GRAB BARS & SHOWER SEATS. SEE GEN NOTE F ON SHEET A400.
 - NEW EXTERIOR WINDOW TYPES INDICATED ON FLOOR PLANS. SEE A210 FOR EXTERIOR WINDOW TYPES.
 - POWDERCOAT PAINT ALL EXPOSED EXTERIOR STEEL.
 - SEE ENLARGED UNIT PLANS (A400 SERIES SHEETS) FOR WALL TYPE TAGS AND DIMENSIONS FOR EACH UNIT TYPE.
 - NEW STAR EXTENSIONS TO BE CONCRETE FILLED METAL PANS BETWEEN 2 #312 TUBE STEEL STRINGERS AND 4" CONCRETE/FORM DECK LANDING.
 - ALL STAIRS SHALL HAVE HANDRAILS ON BOTH SIDES, TYP. TOP OF ALL HANDRAILS TO BE 36" A.F.F., TOP OF ALL GUARDRAILS TO BE 42" A.F.F.
 - PROVIDE 12" HANDRAIL EXTENSIONS AT TOP & BOTTOM OF ALL NEW & EXISTING STAIRS & RAMPS.
 - ALL BALCONY DOOR THRESHOLDS SHALL BE ADA COMPLIANT.

- FLOOR PLAN KEY NOTES:**
- > 3 HOUR RATED SPRAY FIREPROOFING ON ALL COLUMNS, BEAMS AND FLOOR DECK ABOVE - BASEMENT AND FIRST FLOOR SEG-A ONLY. SEE DETAILS 6 & 8A/11B. CONCRETE TRAFFIC PROTECTION BASE AT COLUMNS.
 - > INTAKE AIR LOUVER. SEE MECH.
 - > EXHAUST AIR LOUVER. SEE MECH.
 - > NEW OPENINGS THRU EXISTING FOUNDATION WALL: GARAGE DOORS, MAIN DOOR & LOUVER.
 - > NEW RAMP AS REQUIRED - SEE SECTION SA301.
 - > NEW HEATED CONC ENTRANCE DRIVE & RETAINING WALLS.
 - > GUARDRAIL PER CODE AT TOP OF RETAINING WALL.
 - > EXISTING TUNNEL: REMOVE LID, INFILL W/ SAND & NEW CONC FLOOR PATCH.
 - > NEW CONC FLOOR AREA INFILL OR PATCH (SHOWN HATCHED) SEE STRUCTURAL.
 - > NEW MOP SINK - SEE PLUMBING.
 - > NEW CONC FLOOR AREA PITCHED TO NEW FLOOR DRAIN. (BKE WASH).
 - > NOT USED.
 - > NEW FIREWALL EXTENTS.
 - > ADD HANDRAILS AND HANDRAIL EXTENSIONS TO EXISTING STAIR TOWERS TO REMAIN.
 - > VOID SPACE BEHIND STAR (NOT A CHASE).
 - > NEW ENTRANCE CANOPY.
 - > RECESSED BALCONY SEG-A, 1ST, 2ND & 3RD FLOORS.
 - > PRIVACY PARTITION W/ HORIZ WOOD BOARDS TO 6'-0" HIGH.
 - > 2 HOUR RATED DUCT CHASE.
 - > EXHAUST GRILLE THRU EXISTING BUILDING EXTERIOR WALL. COORDINATE W/ MECH.
 - > LAUNDRY CLOTHES DRYER VENTING THRU EXISTING BUILDING EXTERIOR WALL. COORDINATE W/ MECH.
 - > UTILITY SINK - SEE PLUMBING.
 - > (LAUNDRY) DRIVERS.
 - > (LAUNDRY) WASHERS.
 - > EXISTING 2 HOUR RATED MASONRY CHASE TO REMAIN. FUTURE AUTOMATIC DOOR OPERATOR / ACTUATOR PEDESTAL LOCATION. VERIFY REQUIREMENTS.
 - > WIRE STORAGE COMPARTMENTS.
 - > 2X4 WOOD STUDS TO 8'-0" W/O/SB SHEATHING AND DOOR. WIRE MESH SECURITY TOPS.
 - > APARTMENT UNIT TYPE DESIGNATION. SEE A400 SHEETS.
 - > 4TH FLOOR BALCONY: EPDM SYSTEM, WALKWAY MATS & DRAINS.
 - > CLOSET FOR WATER HEATER IN LAUNDRY/ATM.
 - > 4" CMU AROUND STEEL COLUMNS AT FIREWALL.
 - > REMOVE VINYL WALL COVERING AT STAIR TOWER, PATCH PLASTER AND PAINT.
 - > EXISTING ELEVATOR SHAFT & ENTRANCES TO REMAIN. EXTEND SHFT TO NEW 4TH FLOOR. NEW CAR & EQP.
 - > X INDICATES AREA OPEN TO ABOVE.
 - > X INDICATES AREA OPEN TO BELOW.
 - > REFERENCE LINE OF PARAPET/BALCONY RAIL BELOW.
 - > NEW SUSPENDED BALCONY.
 - > BASKETBALL COURT PAVER SYSTEM & FENCING PER CODE.
 - > NEW EPDM ROOF SYSTEM ON EXISTING CONC PLANK DECK. (R28)
 - > NEW CONC FLOOR AREA PITCHED TO NEW TRENCH DRAIN.
 - > REMOVAL OF BUILDING COLUMN AND NEW SUPPORT BEAMS. SEE STRUCTURAL.
 - > VERIFY SIZE OF DUCT ENCLOSURE REQ'D WITH MECHANICAL (NOT A CHASE).
 - > 2X6 WOOD STUD WALL/WIRE RACEWAY. VERIFY REQUIREMENTS W/ ELECTRICAL - VERIFY SHEATHING & SOUNDING CAP FLASH.
 - > CONC PAD AND SITE FENCING - VERIFY.
 - > NOT USED.
 - > REMOVE PORTION OF EXISTING GRATE AND AREAWALL FOR INTAKE AIR - INFILL PORTION OF AREAWALL.
 - > NEW STAIRWAY INTERRUPTION GATE.
 - > STEEL LADDER ATTACHED TO CMU WALL TO HATCH ABOVE.
 - > 1 HOUR RATED ASSEMBLY AT COLUMNS - SEE DETAIL 11A211R.
 - > 1 HOUR RATED SPRAY FIREPROOFING ON ALL COLUMNS AND BEAMS - SEE DETAILS 5, 8, 10 & 11 SHEET A211R.
 - > FRP WAINSCOT TO 48" AFF.
 - > PLYWOOD WAINSCOT TO 48" AFF.
 - > 1 HOUR RATED SPRAY FIREPROOFING ON BEAMS ABOVE - SEE DETAIL 10A211R EXCEPT AS NOTED.
 - > 1 HOUR RATED TOP TO BOTTOM FIREPROOFING ON BEAMS ABOVE AT EXTERIOR WALL. SEE DETAIL A211R.

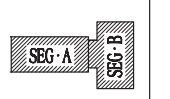


HSR ASSOCIATES INC.
100 MILWAUKEE STREET
LA CROSSE, WISCONSIN
PHONE: 608.782.5844
FAX: 608.782.5844
WEB SITE: www.hsrasociates.com

Project Title: THE HUB ON 6TH
Project Location: 415 NORTH 6TH STREET
LA CROSSE, WISCONSIN
Sheet Title: SEBB THIRD FLOOR PLAN

Project Number: N011
Project Date: JULY 27, 2017

Drawn By: Rampa
Key Plan:



Last Update: 10/25/2017

A107R1

SEE SHEET A107 FOR NOTES

ARCHITECTURE
ENGINEERING
INTERIOR DESIGN



HSR ASSOCIATES INC.
100 MILWAUKEE STREET
LA CROSSE, WISCONSIN
PHONE: 608.782.8830
FAX: 608.782.8844
WEB SITE: www.hsrassociates.com

Project Title: THE HUB ON 6TH
Project Location: 415 NORTH 6TH STREET
LA CROSSE, WISCONSIN
Sheet Title: FOURTH FLOOR PLAN

Project Number: 1001

Project Date: JULY 27, 2017

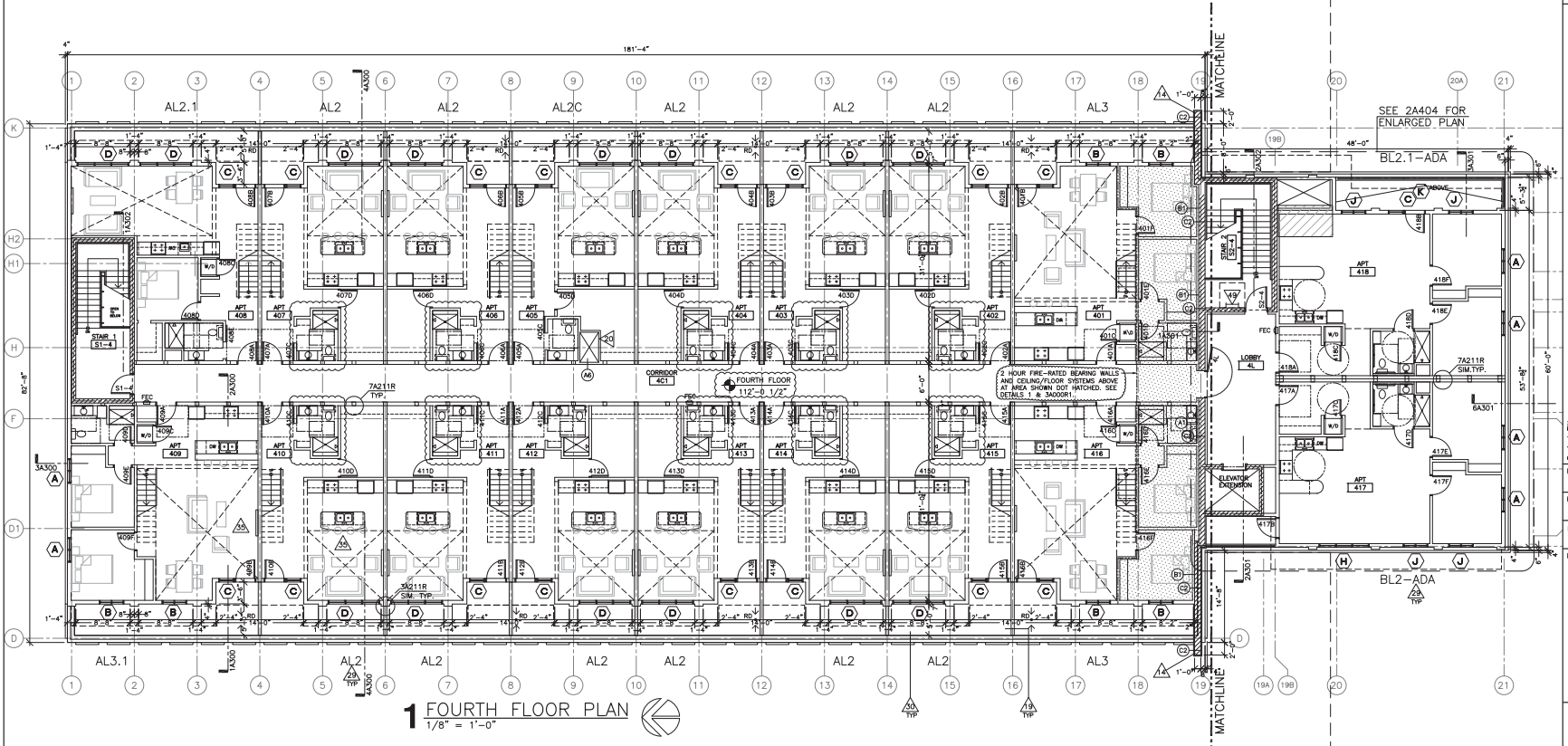
Drawn By: Stamp

Key Plan:



Last Update: 10/25/2017

A108R2



FLOOR PLAN GENERAL NOTES:

- A. ○ SYMBOL INDICATES WALL TYPE - SEE SHEET A211 FOR WALL TYPE DETAILS.
- B. INSTALL WOOD BLOCKING BETWEEN STUDS AS REQUIRED FOR 3/4" CASEROCK, CHAIR BRIMS & SHOWER SEATS. SEE GEN NOTE F ON SHEET A400.
- C. NEW EXTERIOR WINDOW TYPES INDICATED (C) ON FLOOR PLANS. SEE A210 FOR EXTERIOR WINDOW TYPES.
- E. POWDERCOAT PAINT ALL EXPOSED EXTERIOR STEEL.
- F. SEE ENLARGED UNIT PLANS (A400 SERIES SHEETS) FOR WALL TYPE TAGS AND DIMENSIONS FOR EACH UNIT TYPE.
- G. NEW STAIR EXTENSIONS TO BE CONCRETE FILLED METAL FRAMES BETWEEN 2 #312 TUBE STEEL STRINGERS AND 4" CONCRETE/FORM DECK LANDING.
- H. ALL STAIRS SHALL HAVE HANDRAILS ON BOTH SIDES, TYP.
- J. TOP OF ALL HANDRAILS TO BE 36" A.F.F.
- K. TOP OF ALL GUARDRAILS TO BE 42" A.F.F.
- L. PROVIDE 12" HANDRAIL EXTENSIONS AT TOP & BOTTOM OF ALL NEW & EXISTING STAIRS & RAMPS.
- M. ALL BALCONY DOOR THRESHOLDS SHALL BE ADA COMPLIANT.

FLOOR PLAN KEY NOTES:

- > 3 HOUR RATED SPRAY FIREPROOFING ON ALL COLUMNS, BEAMS AND FLOOR DECK ABOVE - BASEMENT AND FIRST FLOOR SEG-A ONLY. SEE DETAILS 5 & WALL 1R.
- > CONCRETE TRAFFIC PROTECTION BASE AT COLUMNS.
- > INTAKE AIR LOUVER. SEE MECH.
- > EXHAUST AIR LOUVER. SEE MECH.
- > NEW OPENINGS THRU EXISTING FOUNDATION WALL: GARAGE DOORS, MAIN DOOR & LOUVER.
- > NEW RAMP AS REQUIRED - SEE SECTION S401.
- > NEW HEATED CONC ENTRANCE DRIVE & RETAINING WALLS.
- > GUARDRAIL PER CODE AT TOP OF RETAINING WALL.
- > EXISTING TUNNEL: REMOVE LID, INFILL W/ SAND & NEW CONC FLOOR PATCH.
- > NEW CONC FLOOR AREA INFILL OR PATCH (SHOWN HATCHED) SEE STRUCTURAL.
- > NEW MOP SINK - SEE PLUMBING.
- > NEW CONC FLOOR AREA PITCHED TO NEW FLOOR DRAIN. (SEE MECH).
- > NOT USED.
- > NEW FIREWALL EXTENTS.
- > ADD HANDRAILS AND HANDRAIL EXTENSIONS TO EXISTING STAIR TOWERS TO REMAIN.
- > VOID SPACE REMOVED STAIR (NOT A CHASE).
- > NEW ENTRANCE CANOPY.
- > RECESSED BALCONY SEG-A, 1ST, 2ND & 3RD FLOORS.
- > PARTIAL PARTITION W/ HORIZ WOOD BOARDS TO 6'-0"
- > 2 HOUR RATED DUCT CHASE.
- > EXHAUST GRILLE THRU EXISTING BUILDING EXTERIOR WALL. COORDINATE W/ MECH.
- > LAUNDRY CLOTHES DRYER VENTING THRU EXISTING BUILDING EXTERIOR WALL. COORDINATE W/ MECH.
- > UTILITY SINK - SEE PLUMBING.
- > (LAUNDRY) DRYERS.
- > (LAUNDRY) WASHERS.
- > EXISTING 2 HOUR RATED MASONRY CHASE TO REMAIN.
- > FUTURE AUTOMATIC DOOR OPERATOR / ACTUATOR PEDESTAL LOCATION. VERIFY REQUIREMENTS.
- > NEW STORAGE COMPARTMENT: 2x4 WOOD STUDS TO 8'-0" W/O/SB SHEATHING AND DOOR. HIRE MECH SECURITY TIPS.
- > APARTMENT UNIT TYPE DESIGNATION. SEE A400 SHEETS.
- > 4TH FLOOR BALCONY. EPDM SYSTEM, WALKWAY MATS & DRAIN.
- > CLOSET FOR WATER HEATER IN LAUNDRY/ATM.
- > 4" CMU AROUND STEEL COLUMNS AT FIREWALL.
- > REMOVE VINYL WALL COVERING AT STAIR TOWER, PATCH PLASTER AND PAINT.
- > EXISTING ELEVATOR SHAFT & ENTRANCES TO REMAIN. EXTEND SHAFT TO NEW 4TH FLOOR. NEW CAR & EQUP.
- > X INDICATES AREA OPEN TO ABOVE.
- > X INDICATES AREA OPEN TO BELOW.
- > REFERENCE LINE OF PARAPET/BALCONY RAIL BELOW.
- > NEW SUSPENDED BALCONY.
- > BASKETBALL COURT PAVER SYSTEM & FENCING PER CODE.
- > NEW EPDM ROOF SYSTEM ON EXISTING CONC PLANK DECK. (R30)
- > NEW CONC FLOOR AREA PITCHED TO NEW TRENCH DRAIN.
- > REMOVAL OF BUILDING COLUMN AND NEW SUPPORT BEAMS. SEE STRUCTURAL.
- > VERIFY SIZE OF DUCT ENCLOSURE REQ'D WITH MECHANICAL (NOT A CHASE).
- > 2x6 WOOD STUD WALL/WIRE RACEWAY. VERIFY REQUIREMENTS W/ ELECTRICAL - VERIFY SHEATHING & SOUND CAP FLASH.
- > CONC PAD AND SITE FENCING - VERIFY.
- > NOT USED.
- > REMOVE PORTION OF EXISTING GRATE AND AREA WALL FOR INTAKE AIR - INFILL PORTION OF AREA WALL.
- > NEW STAIRWAY INTERRUPTION GATE.
- > STEEL LADDER ATTACHED TO CMU WALL TO HATCH ABOVE.
- > 1 HOUR RATED ASSEMBLY AT COLUMNS - SEE DETAIL 11A211R.
- > 1 HOUR RATED SPRAY FIREPROOFING ON ALL COLUMNS AND BEAMS - SEE DETAILS 5, 8, 10 & 11 SHEET A211R.
- > FRP WAINSCOT TO 48" AFF.
- > 1 HOUR RATED SPRAY FIREPROOFING ON BEAMS ABOVE. SEE DETAIL 10A211R EXCEPT AS NOTED.
- > 1 HOUR RATED TOP SO FIREPROOFING ON BEAMS ABOVE AT EXTERIOR WALL. SEE DETAIL 8A211R.

ARCHITECTURE
ENGINEERING
INTERIOR DESIGN



HSR ASSOCIATES INC.
100 MILWAUKEE STREET
LA CROSSE, WISCONSIN
PHONE: 608.782.8830
FAX: 608.782.8844
WEB SITE: www.hsrassociates.com

Project Title: THE HUB ON 6TH
Project Location: 415 NORTH 6TH STREET
LA CROSSE, WISCONSIN
Sheet Title: FIFTH (LOFTS) FLOOR PLAN

Project Number: 1001

Project Date: JULY 27, 2017

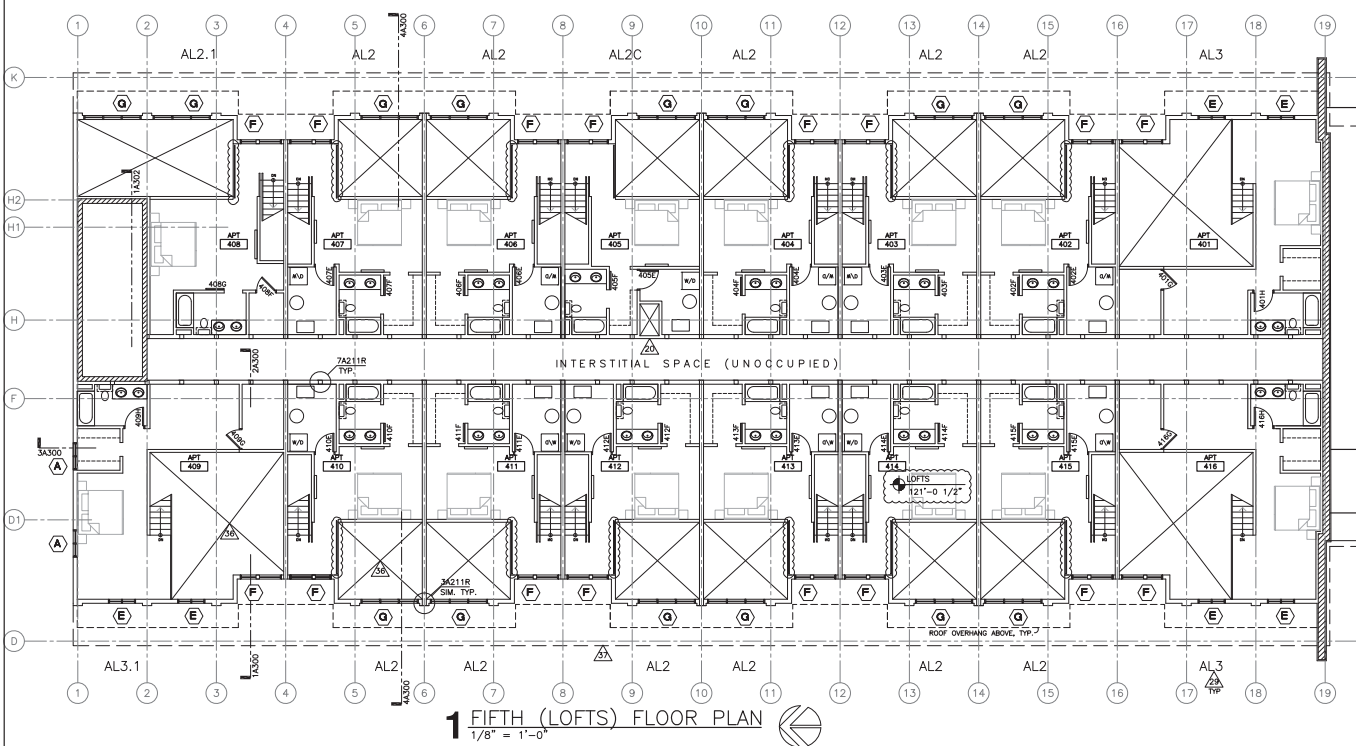
Drawn By: Stamp

Key Plan:



Last Update: 10/25/2017

A109R2





ARCHITECTURE
ENGINEERING
INTERIOR DESIGN

HSR ASSOCIATES INC.
100 MILWAUKEE STREET
LA CROSSE, WISCONSIN
PHONE: 608.784.1830
FAX: 608.782.2644
WEB SITE: www.hsrasociates.com

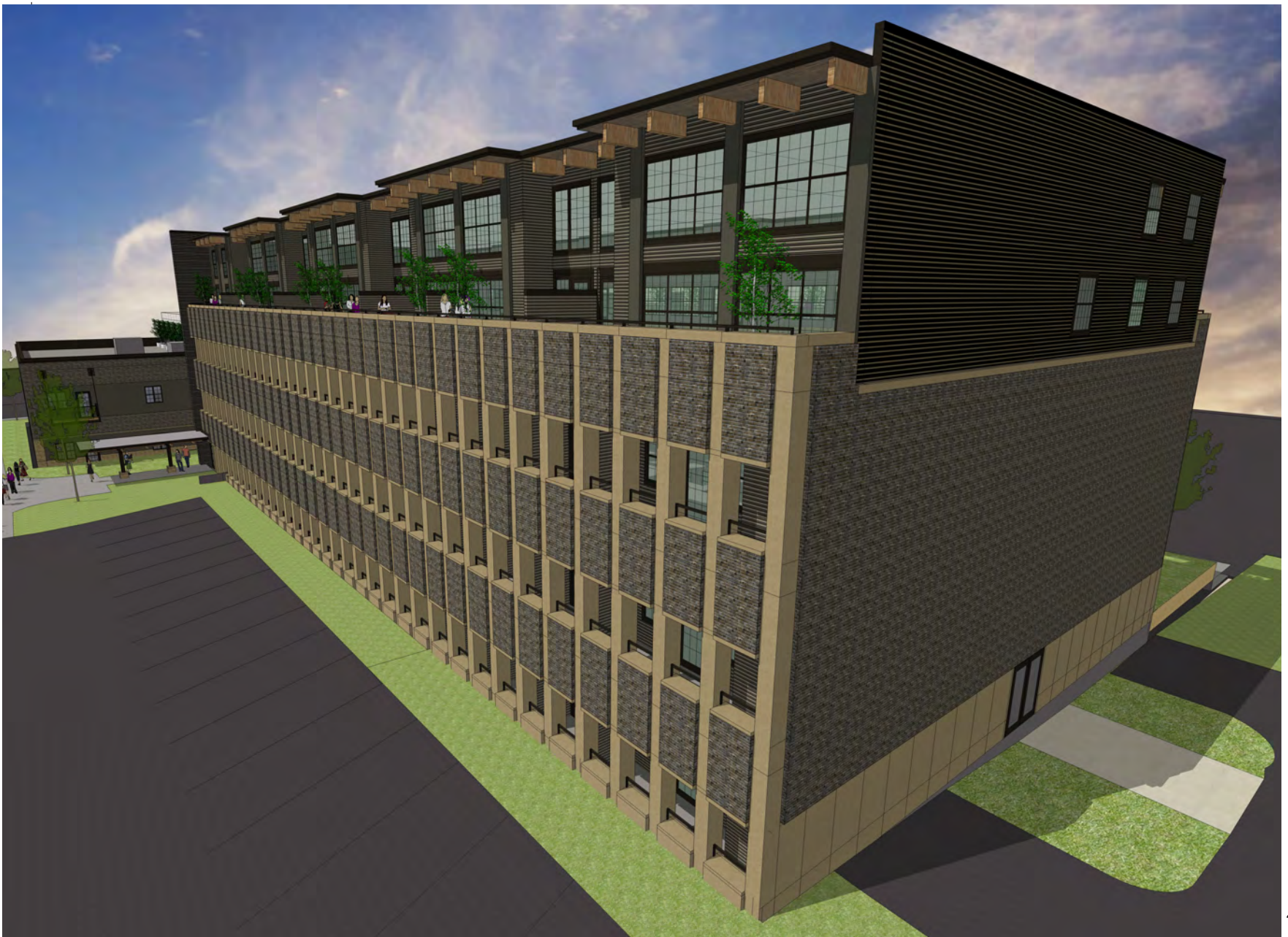
Project Title: **THE HUB ON 6TH**
Project Location: **415 NORTH 6TH STREET
LA CROSSE, WISCONSIN**
Sheet Title: **COVER SHEET**

HSR Project Number: **10011**
Project Date: **APRIL 2017**
Drawn By:

Key Plan:

Last Update: **June 23, 2017**

A000R



ARCHITECTURE
ENGINEERING
INTERIOR DESIGN

HSR ASSOCIATES INC.
100 MILWAUKEE STREET
LA CROSSE, WISCONSIN
PHONE: 608.784.1830
FAX: 608.782.2644
WEB SITE: www.hsrasociates.com

Project Title: **THE HUB ON 6TH**
Project Location: **415 NORTH 6TH STREET
LA CROSSE, WISCONSIN**
Sheet Title: **COVER SHEET**

HSR Project Number: **10011**
Project Date: **APRIL 2017**
Drawn By:

Key Plan:

Last Update: **June 23, 2017**

A000R