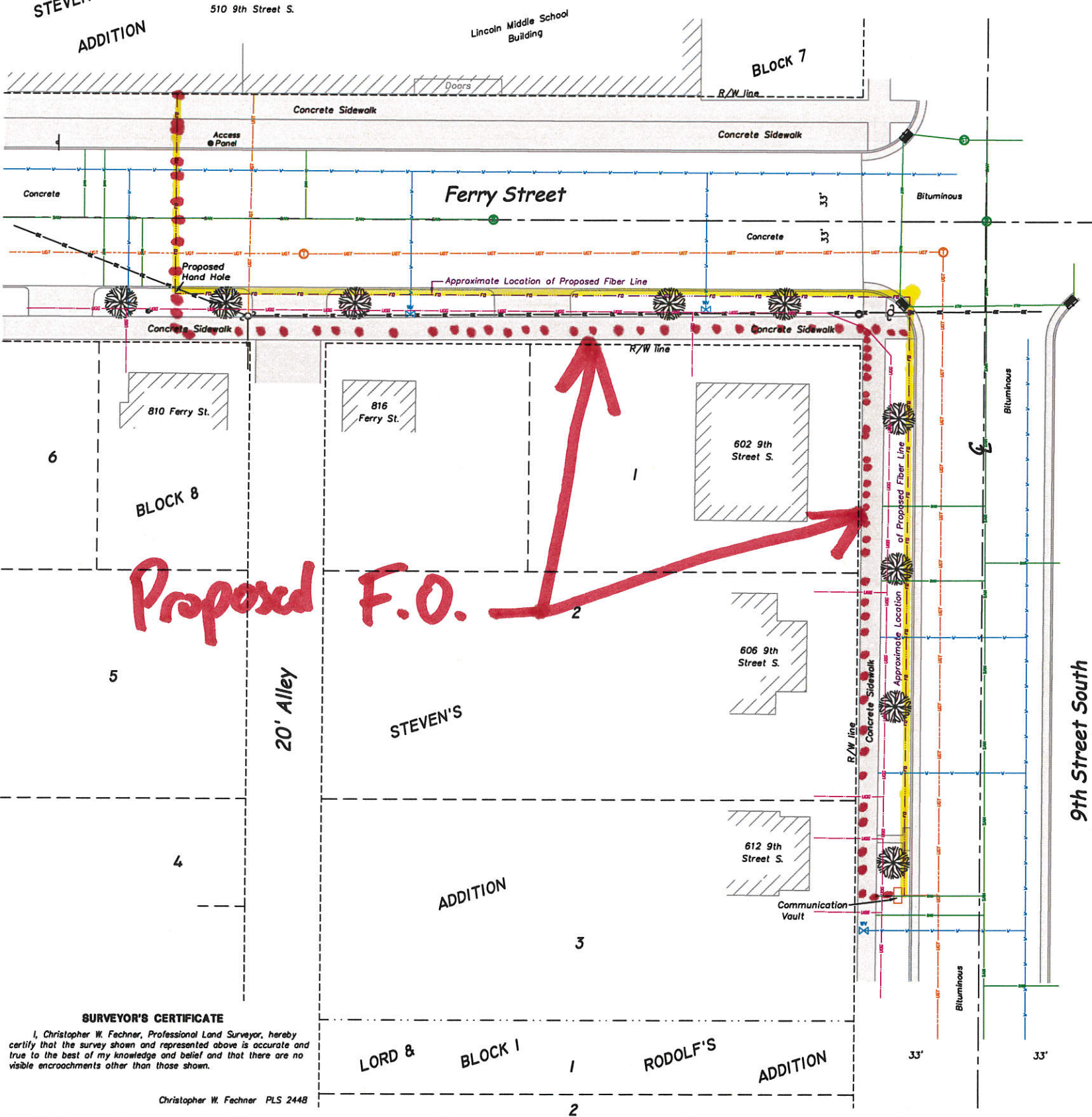


*Fiber Optics to be Pkced Under Slurack As New Row As Possiik*

This survey was prepared to locate the existing utilities and the proposed fiber optic line for permitting purposes.



*Proposed F.O.*

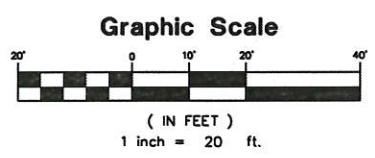


ALL UTILITIES AS SHOWN ARE APPROXIMATE LOCATIONS DERIVED FROM ACTUAL MEASUREMENTS AND AVAILABLE RECORDS. THEY SHOULD NOT BE INTERPRETED TO BE EXACT LOCATIONS NOR SHOULD IT BE ASSURED THAT THEY ARE THE ONLY UTILITIES IN THE AREA.  
Utilities shown as marked per Diggers Hotline ticket number 20193813691, dated 9/18/2019.

BLOCK 2

33'  
33'

Bearing Basis: The La Crosse County Coordinate System. Referenced to the (NCCS) NAD 83 (2011) Adjustment.



- LEGEND**
- = Communication Manhole
  - = Water Manhole
  - = Sanitary Sewer Manhole
  - = Storm Sewer Manhole
  - = Water Valve
  - = Historic Marker Sign
  - = Storm Water Inlet Sign
  - = Right-of-way line Centerline
  - = Electric
  - = Fiber Optic
  - = Gas Line
  - = Communication
  - = Sanitary Sewer
  - = Storm Sewer
  - = Water Line
  - = Overhead Wires
  - = Utility Pole
  - = Guy Anchor
  - = Concrete Curb & Gutter
  - = Boulevard Tree

**SURVEYOR'S CERTIFICATE**  
I, Christopher W. Fechner, Professional Land Surveyor, hereby certify that the survey shown and represented above is accurate and true to the best of my knowledge and belief and that there are no visible encroachments other than those shown.  
Christopher W. Fechner PLS 2448

**C.R. Coulee Region L.S. Land Surveyors**

917 SOUTH 4TH STREET - P.O. BOX 1954  
LA CROSSE, WISCONSIN 54601  
PHONE (608) 784-1614 FAX (608) 784-1408  
www.couleeregionlandsurveyors.com

Existing Conditions & Utility Survey  
for the School District of La Crosse

**SURVEY FOR**  
School District of La Crosse

Ferry Street & 9th Street S.; lying between Block 7 & Block 8 & Block 1, Steven's Addition;  
City of La Crosse, La Crosse County, WI  
510 9th Street South

DATE 10/8/2019	DATE 10/11/2019	CREW TS
DRAWN BY CF TS	REVIEWED BY TS	SCALE 1" = 80'
PROJECT NO. S-7613	SHEET 1 OF 1	