

SW-NW  
9-15-7

21ST ST



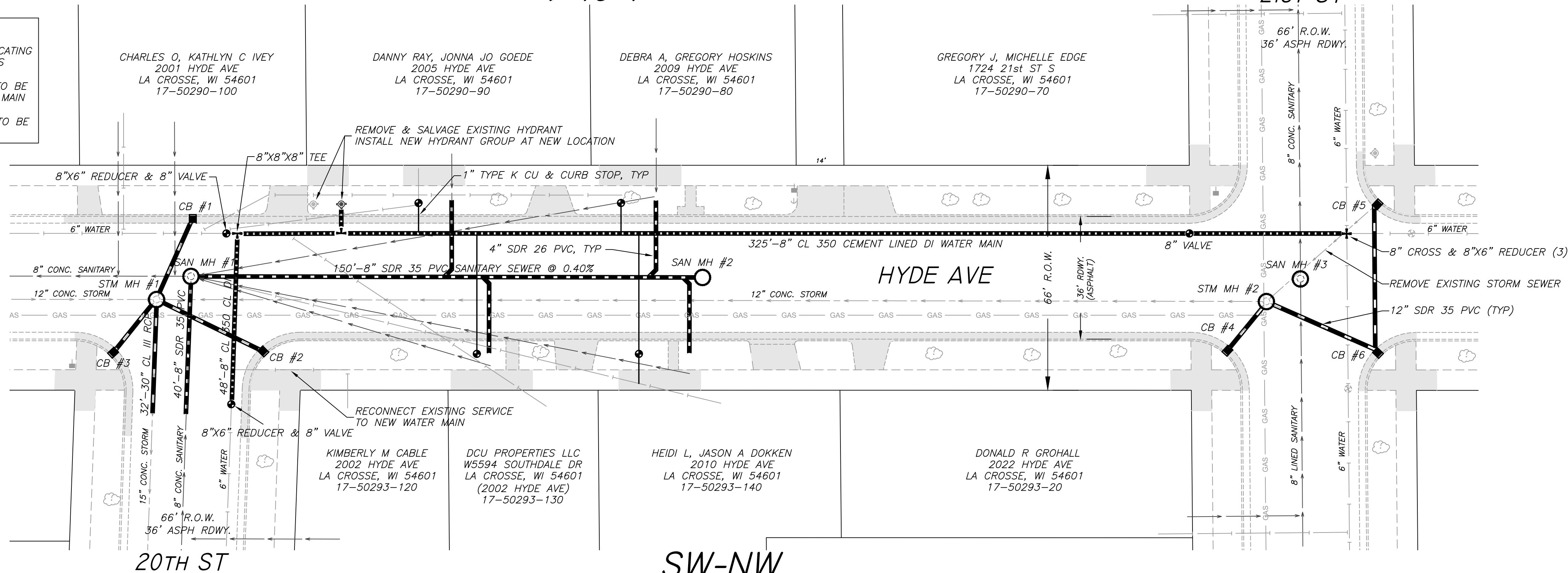
SCALE: 1"=20' H  
1"= 2' V

ELEVATIONS SHOWN ARE  
NAVD 88

BENCHMARKS TOP NUT OF HYDRANT	
20th ST & HYDE AVE	674.14
21st ST & HYDE AVE	674.99

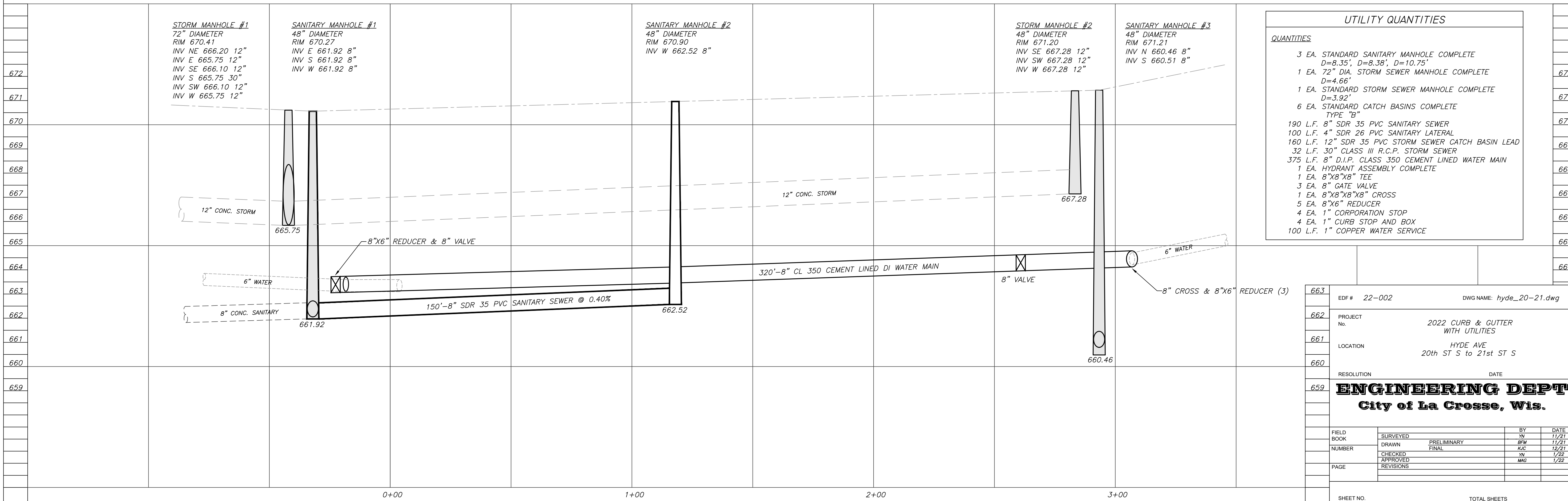
CATCH BASIN SCHEDULE			
CB #	FLOW LINE EL	INV EL	SIZE & DIRECTION
1	669.90	666.40	12" SW
2	669.75	666.25	12" NW
3	669.80	666.30	12" NE
4	670.70	667.40	12" NE
5	670.70	667.40	12" S
6	670.70	667.35	12" N
-	-	667.35	12" NW

**NOTE**  
CONTRACTOR IS RESPONSIBLE FOR LOCATING AND RECONNECTING UTILITIES SERVICES  
EXISTING LONG WATER SERVICES (4) TO BE DISCONNECTED FROM EXISTING WATER MAIN  
EXISTING LONG SEWER LATERALS (3) TO BE ABANDONED & PLUGGED OR REMOVED



**NOTE**  
CONTRACTOR IS TO VERIFY LOCATION OF ALL UTILITIES PRIOR TO ANY CONSTRUCTION

SW-NW  
9-15-7



UTILITY QUANTITIES	
<b>QUANTITIES</b>	
3 EA. STANDARD SANITARY MANHOLE COMPLETE D=8.35', D=8.38', D=10.75'	672
1 EA. 72" DIA. STORM SEWER MANHOLE COMPLETE D=4.66'	671
1 EA. STANDARD STORM SEWER MANHOLE COMPLETE D=3.92'	670
6 EA. STANDARD CATCH BASINS COMPLETE TYPE "B"	669
190 L.F. 8" SDR 35 PVC SANITARY SEWER	668
100 L.F. 4" SDR 26 PVC SANITARY LATERAL	667
160 L.F. 12" SDR 35 PVC STORM SEWER CATCH BASIN LEAD	666
32 L.F. 30" CLASS III R.C.P. STORM SEWER	665
375 L.F. 8" D.I.P. CLASS 350 CEMENT LINED WATER MAIN	664
1 EA. HYDRANT ASSEMBLY COMPLETE	663
1 EA. 8"X8"X8" TEE	
3 EA. 8" GATE VALVE	
1 EA. 8"X8"X8"X8" CROSS	
5 EA. 8"X6" REDUCER	
4 EA. 1" CORPORATION STOP	
4 EA. 1" CURB STOP AND BOX	
100 L.F. 1" COPPER WATER SERVICE	

EDF #	22-002	DWG NAME:	hyde_20-21.dwg
PROJECT No.	2022 CURB & GUTTER WITH UTILITIES		
LOCATION	HYDE AVE 20th ST S to 21st ST S		
RESOLUTION	DATE		
<b>ENGINEERING DEPT.</b> City of La Crosse, Wis.			
FIELD BOOK	SURVEYED	BY	DATE
	DRAWN	PRELIMINARY	BYM 11/21
NUMBER	CHECKED	FINAL	KJC 12/21
	APPROVED		YV 1/22
PAGE	REVISIONS		MAG 1/22
SHEET NO.		TOTAL SHEETS	