

(2) 4 UNIT APARTMENT BUILDING FOR STEVE SCHUCHT
 DENTON STREET LA CROSSE, WI

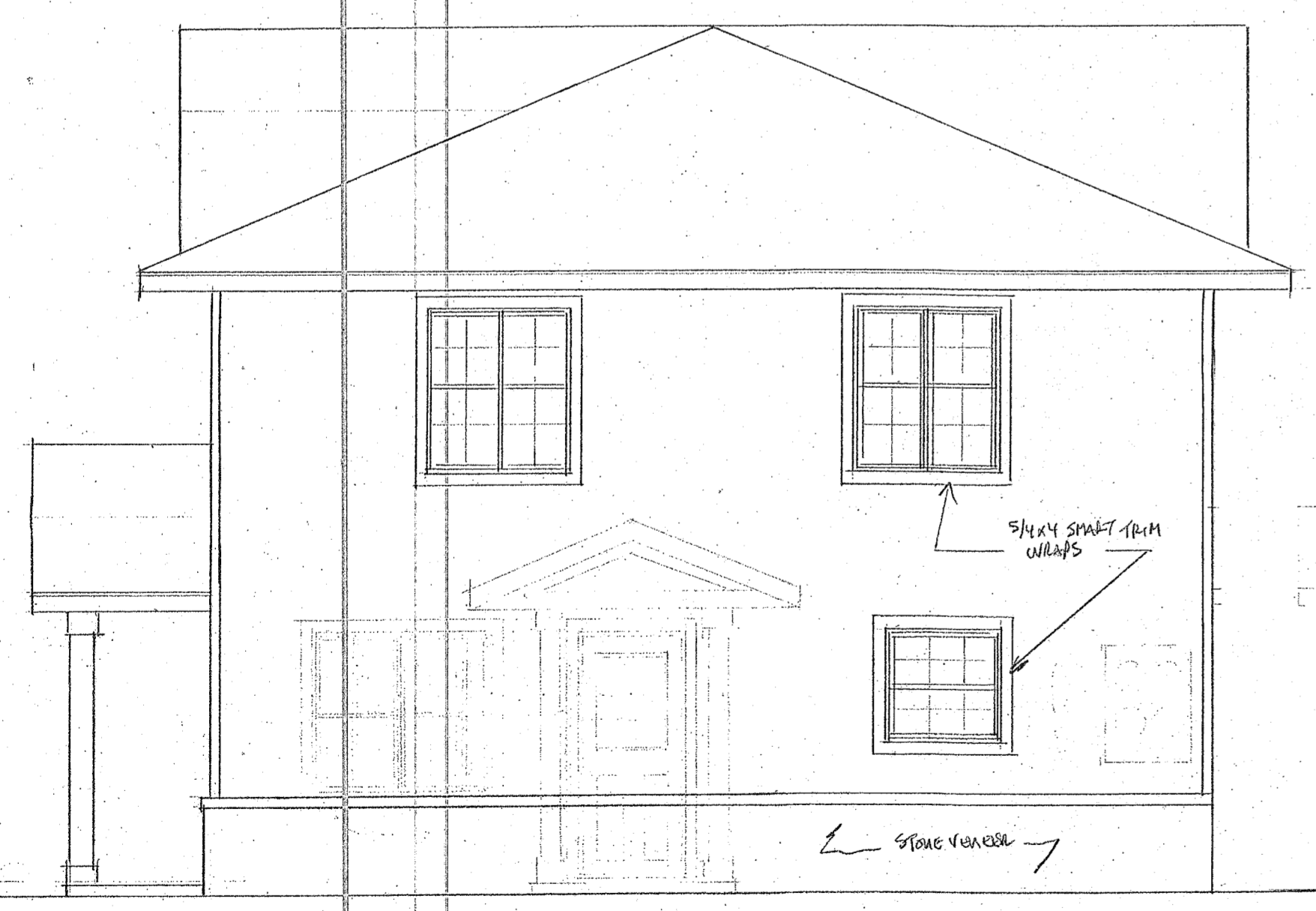
DATE: 12-09-21
 SCALE: 1" = 10'
 DRAWN BY: JMT



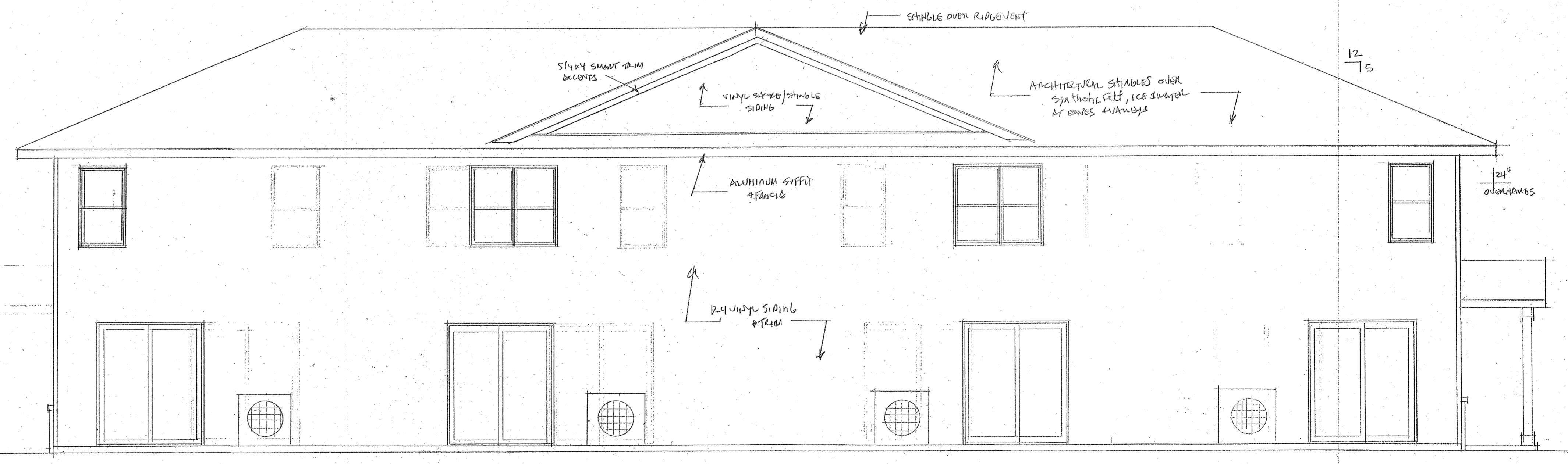
DENTON ST. STREET ELEVATION



FRONT ELEVATION (NOT TO SCALE)



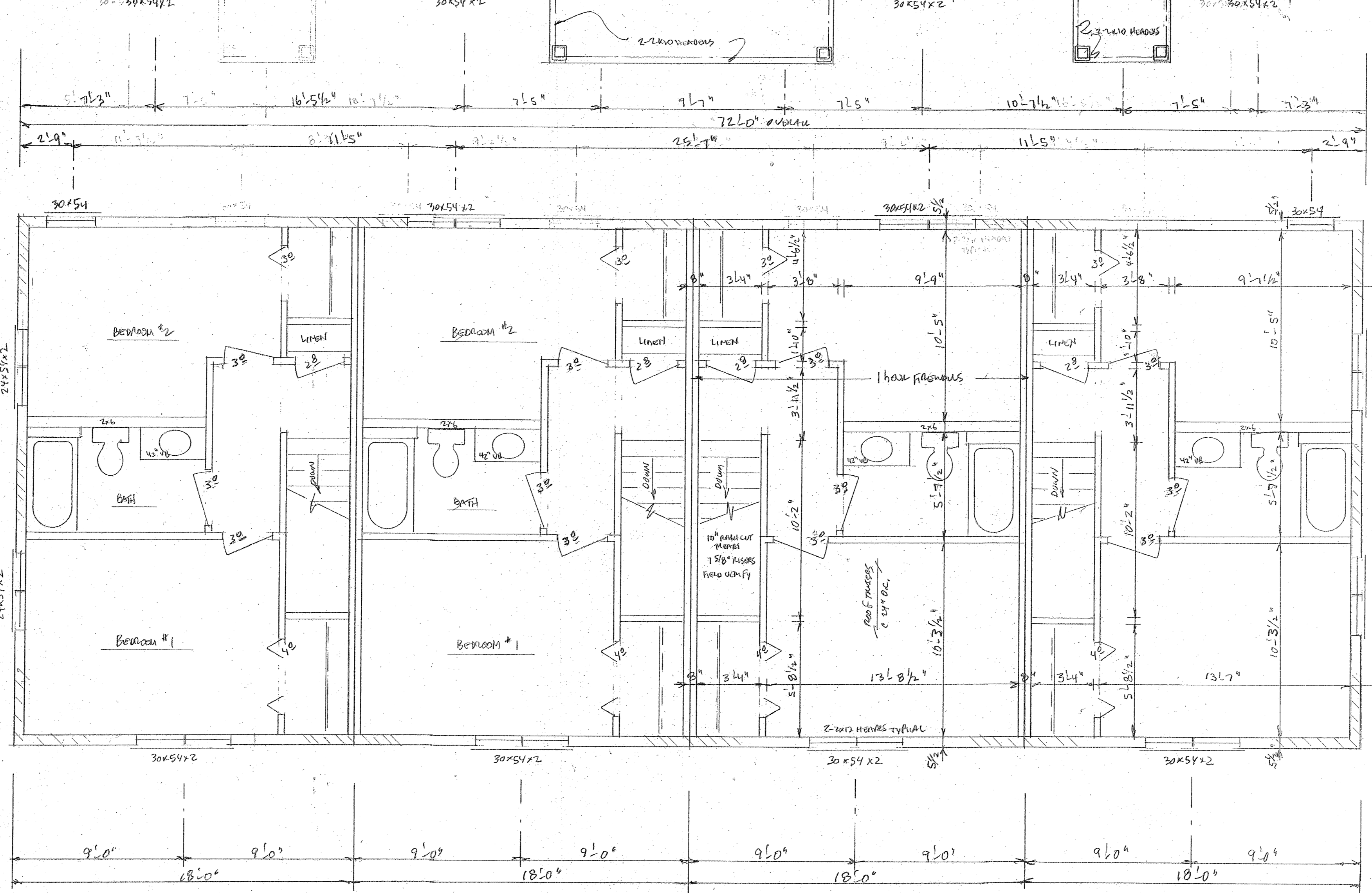
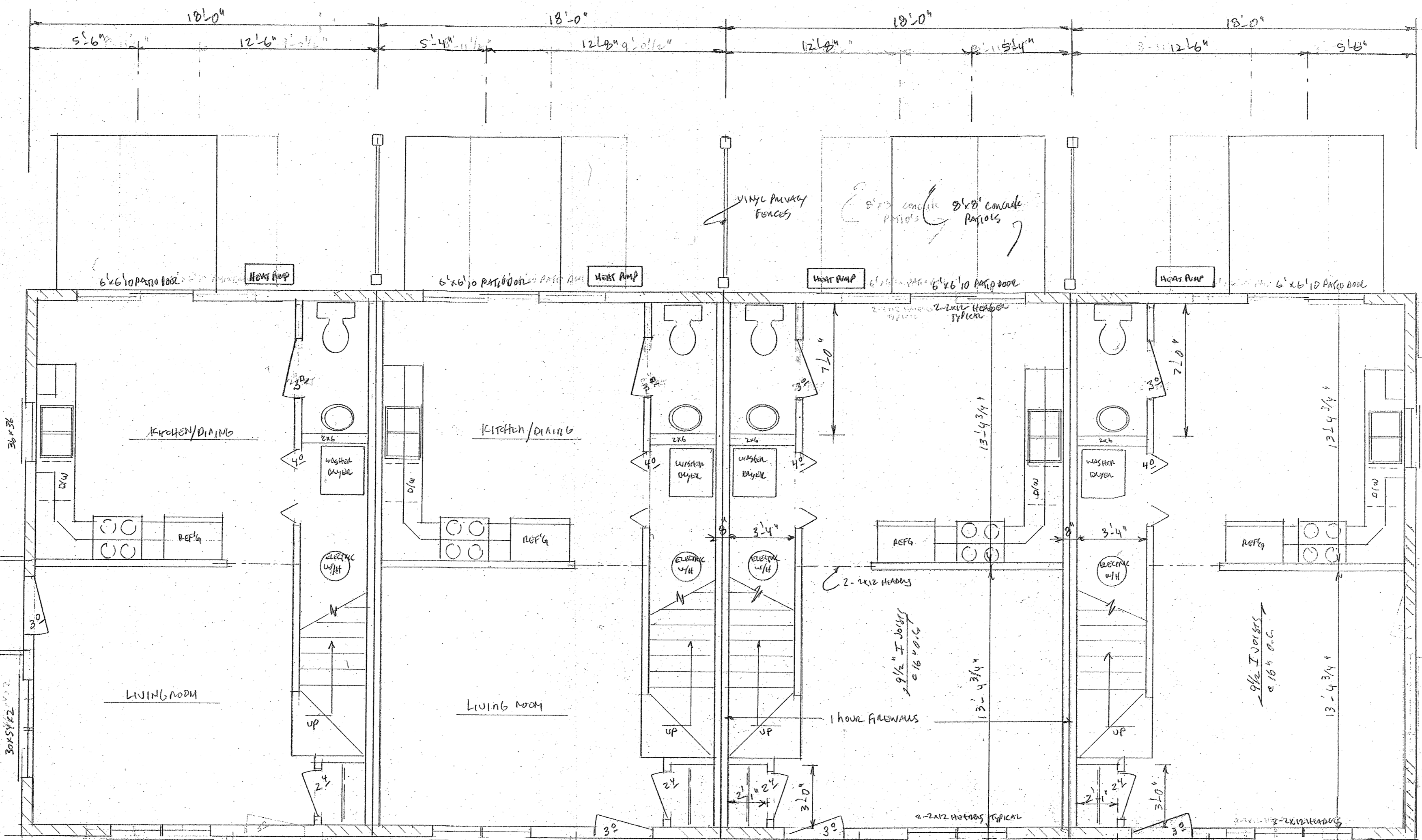
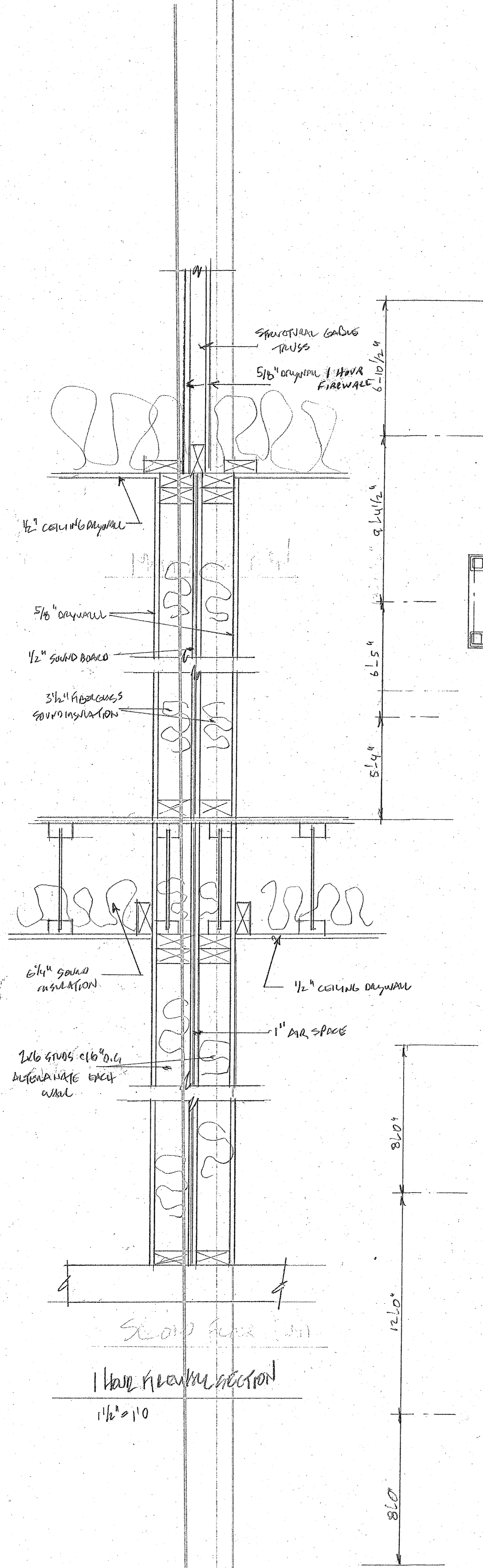
ANDY ELEVATION



REAR ELEVATION (NOT TO SCALE)

4 UNIT APARTMENT BUILDING FOR STEVE SCHUCHT
 BASE BUILDING DENTON ST. LA CROSSE, WI

DATE: 12-01-21
 DRAWN BY: JHT
 SCALE: 1/4" = 1'-0"



MAIN FLOOR PLAN

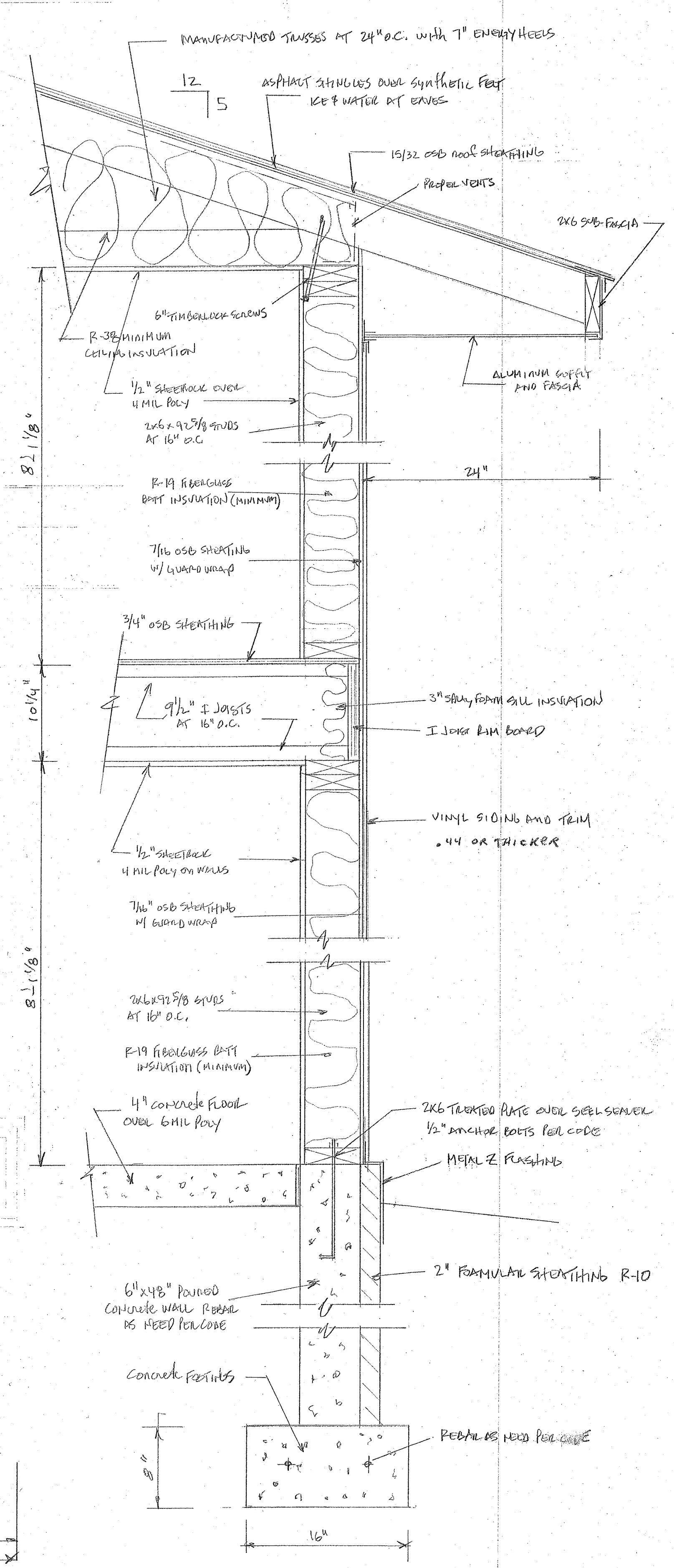
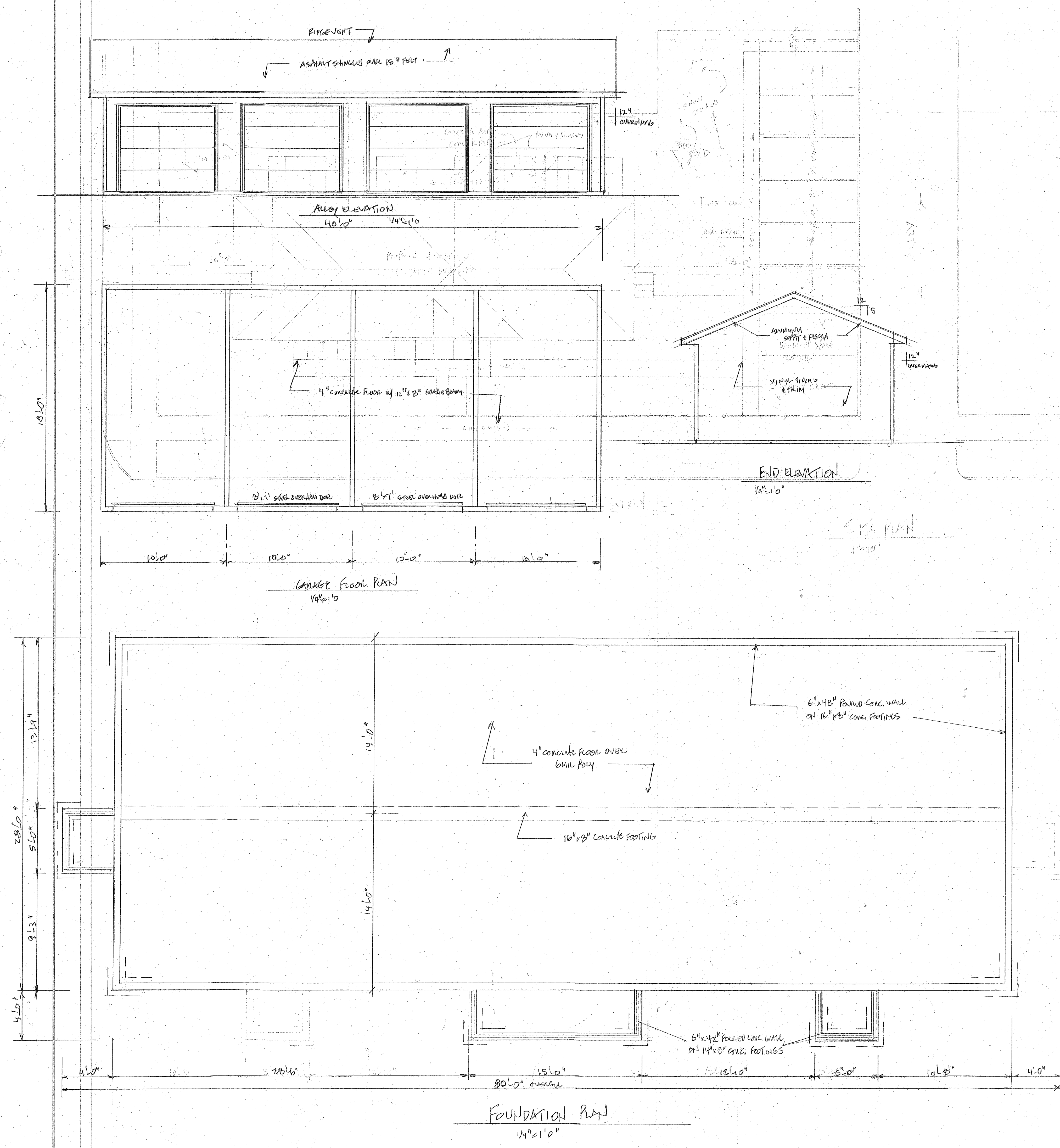
SECOND FLOOR PLAN

DATE	12-01-21
SCALE	1/4" = 1'-0"
DRAWN BY	THT

NOTES!

- STRUCTURAL PANEL LOCATIONS
- MANUFACTURED ROOF TRUSSES AT 24" o.c.
- 4 1/2" PROFIL, 1" ENERGY STEELS
- 9/16" I JOISTS AT 16" o.c. 2ND FLOOR
- 2-2x12 HEADERS DOOR AND WINDOW OPENINGS
- TOTAL UBLIC FOOTAGE OF 41593 SQFT.

4 UNIT APARTMENT BUILDING FOR STEVE SCHLICHT
 1807 BUILDING ON DEVON ST. LA CROSSE, WI



4 UNIT APARTMENT BUILDING FOR STEVE SEBLICHT
 DENTON, ST. LOUIS, MO

DATE: 12-02-21
 DRAWN BY: JUT
 SCALE: AS NOTED
 DETAILS