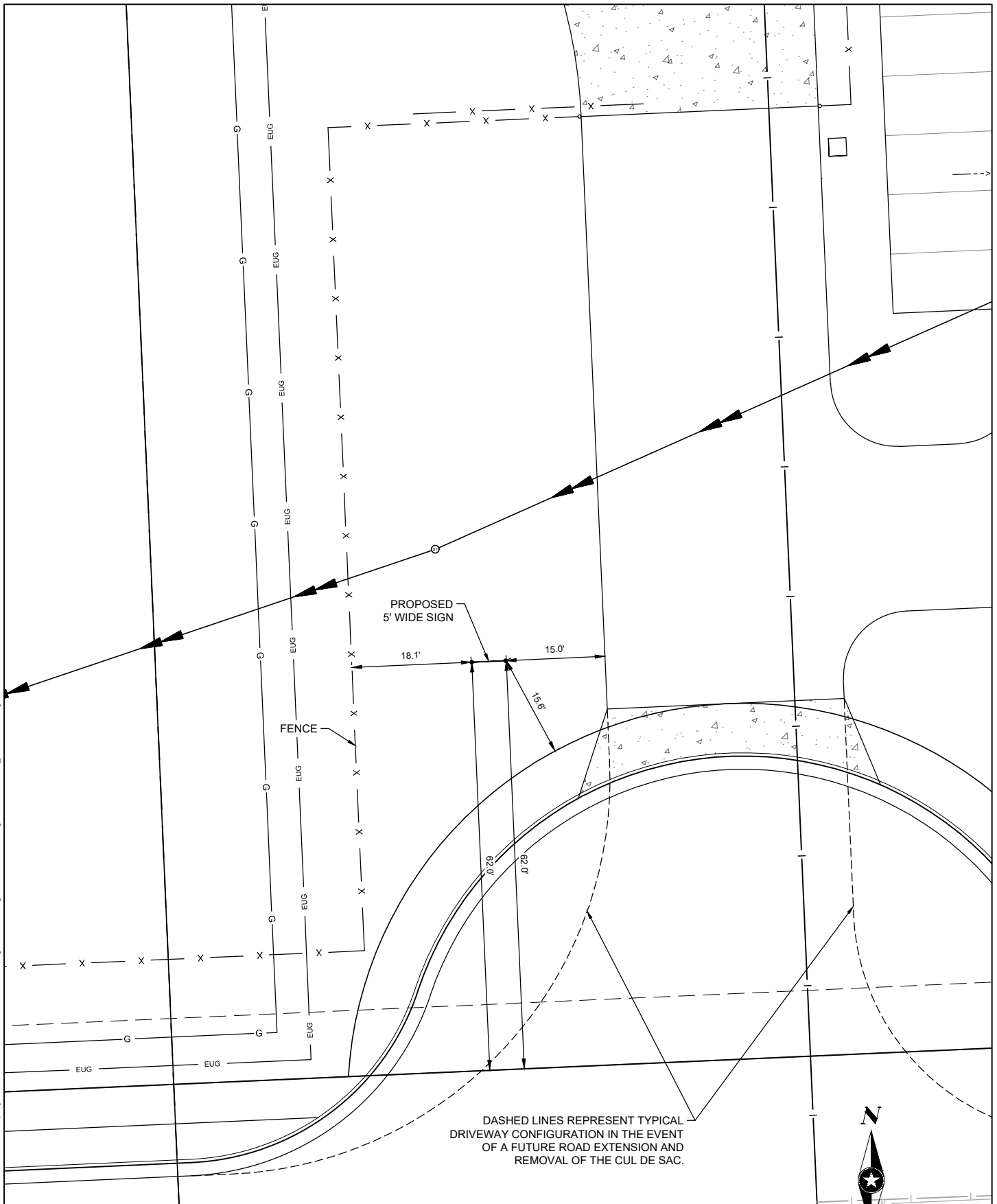


Save: 1/27/2021 2:31 PM pilbecki Plot: 1/27/2021 2:36 PM \\seh\proj\projects\PT\SCAN\PI\48296\5-final-dgn\51-drawings\10-Civil\cad\dwg\sheet\148296_GRD-EC.dwg



BERLIN DRIVE

PROPOSED
5' WIDE SIGN

FENCE

DASHED LINES REPRESENT TYPICAL
DRIVEWAY CONFIGURATION IN THE EVENT
OF A FUTURE ROAD EXTENSION AND
REMOVAL OF THE CUL DE SAC.




PHONE: 608.782.3161
329 JAY STREET, SUITE 301
LA CROSSE, WI 54601-4034
www.sehinc.com

FILE NO.
SCANP_148296

DATE:
1/27/2021

SIGN EXHIBIT
FED EX - LA CROSSE DISTRIBUTION CENTER
LA CROSSE, WI

**EXHIBIT
NO. 1**