

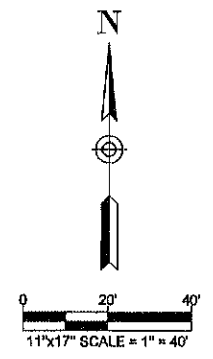
Broadleaf Deciduous		Plant Summary			
Quantity	Code Name	Common Name	Scientific Name	Planting Size	Comments
8	abs	Autumn Brilliance Serviceberry	Amelanchier x grandiflora 'Autumn Brilliance'	6' clamp B&B	airy
4	gcb	Golden Colandale Ginkgo	Ginkgo biloba 'ZF-UGAZ'	2' B&B	narrow
5	fbc	Firebird Crabapple	Malus sargentii 'Select A'	2' B&B	small globe
8	jop	Jack Ornamental Pear	Pyrus calleryana 'Jazzam'	2' B&B	narrow
14	rpo	Regal Prince Oak	Quercus x warei 'Long'	2' B&B	narrow
5	jtl	Japanese Tree Lilac	Syringa reticulata	2' B&B	compact
9	fhe	Frontier Hybrid Elm	Ulmus 'Frontier'	2' B&B	compact
1	nhe	New Horizon Elm	Ulmus 'New Horizon'	2' B&B	airy

Conifer Evergreen		Plant Summary			
Quantity	Code Name	Common Name	Scientific Name	Planting Size	Comments
6	spj	Star Pever Juniper	Juniperus communis 'Star Pover'	2' B&B	narrow

Grass		Plant Summary			
Quantity	Code Name	Common Name	Scientific Name	Planting Size	Comments
41	afg	Avalanche Reed Grass	Calamagrostis acutiflora 'Avalanche'	#2	narrow
68	pds	Prairie Dropseed	Sporobolus heterolepis	#1	airy

Perennial		Plant Summary			
Quantity	Code Name	Common Name	Scientific Name	Planting Size	Comments
61	sba	Summer Beauty Allium	Allium lusitanicum 'Summer Beauty'	#1	Durable
29	btw	Butterfly Milkweed	Asclepias tuberosa	#1	Native
68	ppb	Pink Periwinkle Baptisia	Baptisia australis 'Pink Periwinkle'	#1	Compact
39	lbr	Little Suzi Rudbeckia	Rudbeckia fulgida 'Bliss'	#1	Long Bloomer

10" BLUE NORTHERN GABION
 MULCH
 ARTIFICIAL GRASS
www.kbggrass.com



REVISION DATE

REMARKS

FIELDBOOK: 587A
 SCALE: DRAWN: KAC/CSM
 CHECKED: DRG
 DATE: 09/16/2016

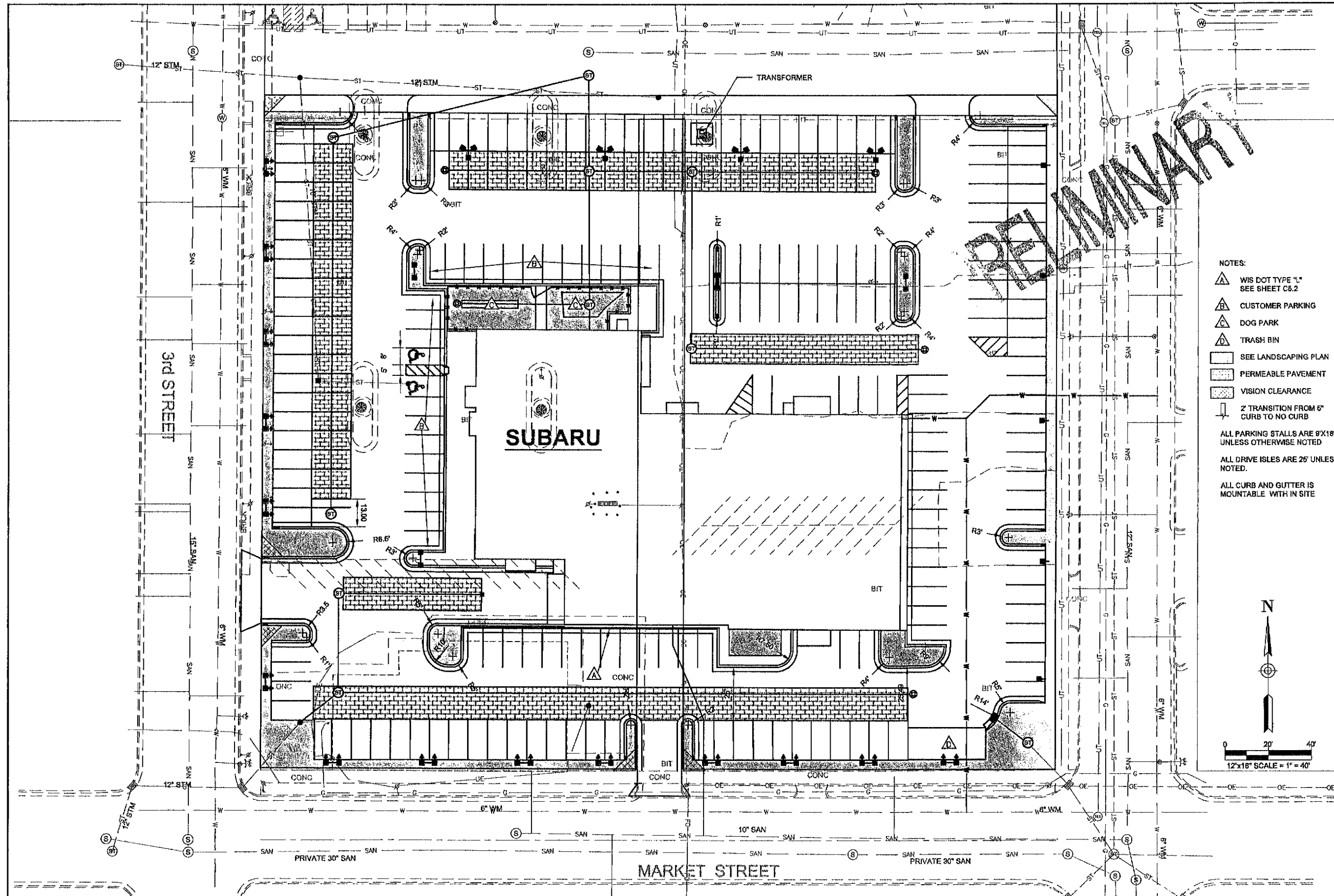
LANDSCAPE PLAN
 SUBARU BUILDING
 DAHL AUTOMOTIVE
 LA CROSSE, WISCONSIN

DAY ENGINEERING CO.
 LA CROSSE, WISCONSIN

PROJECT NUMBER
 8214-003.020

SHEET NO.
 C-6.0

AutoCAD Drawing: 20180718.Dwg; DWG: 14-003.DWG - LA Crosse County/CAD Drawing: C:\Users\Public\Desktop\14-003\14-003.PLA; SITE PLAN.dwg; 7/23/2016 4:00:08 PM



- NOTES:
- ▲ WIS DOT TYPE "1," SEE SHEET C5.2
 - ▲ CUSTOMER PARKING
 - ▲ DOG PARK
 - ▲ TRASH BIN
 - ▭ SEE LANDSCAPING PLAN
 - ▨ PERMEABLE PAVEMENT
 - ▩ VISION CLEARANCE
 - ⌋ 2' TRANSITION FROM 6" CURB TO NO CURB
- ALL PARKING STALLS ARE 8'X18' UNLESS OTHERWISE NOTED
- ALL DRIVE ISLES ARE 25' UNLESS NOTED.
- ALL CURB AND GUTTER IS MOUNTABLE WITH IN SITE

REVISION DATE	REMARKS
FIELDBOOK: 878A	DAVY ENGINEERING CO.,
SCALE: DRAWING: KK	LA CROSSE, WISCONSIN
CHECKED: DRC	
DATE: 09-21-2016	
PROJECT NUMBER	8214-003.020
SHEET NO.	C-2.0

SITE PLAN
 SUBRU BUILDING
 DAHL AUTOMOTIVE
 LA CROSSE, WISCONSIN