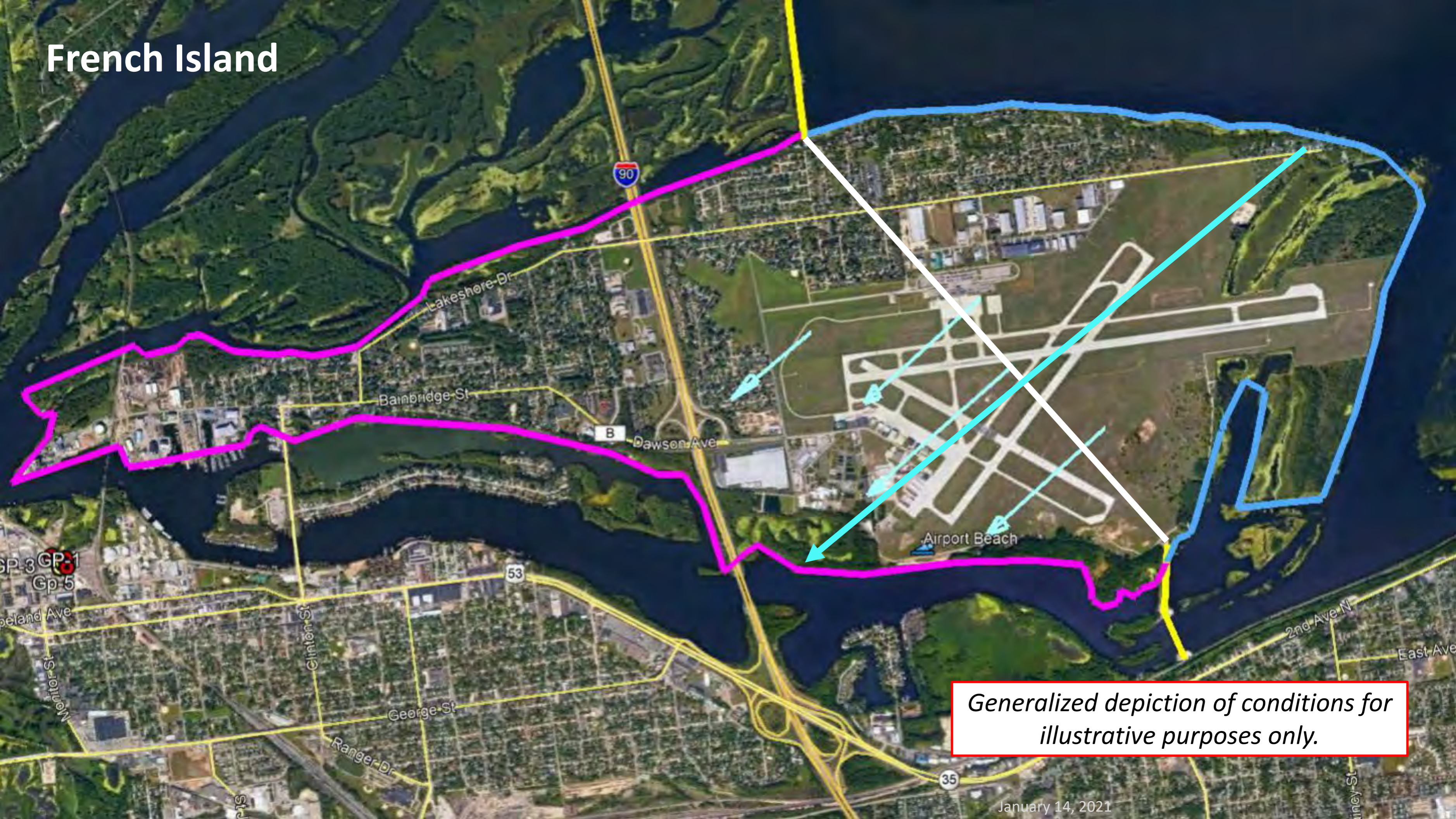


City Council Update

PFAS Water Testing La Crosse Regional Airport January 14, 2021



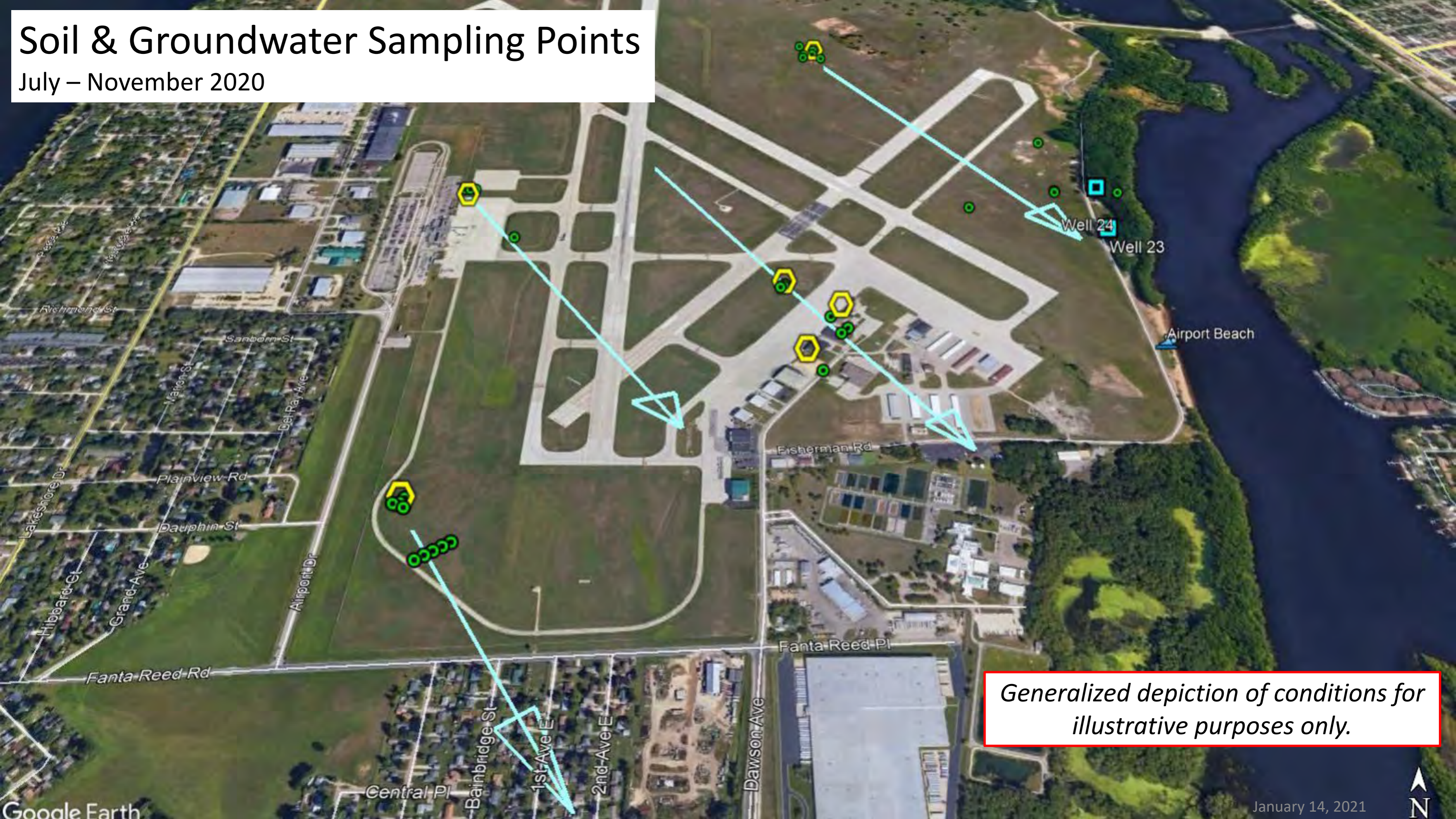
French Island



Generalized depiction of conditions for illustrative purposes only.

Soil & Groundwater Sampling Points

July – November 2020

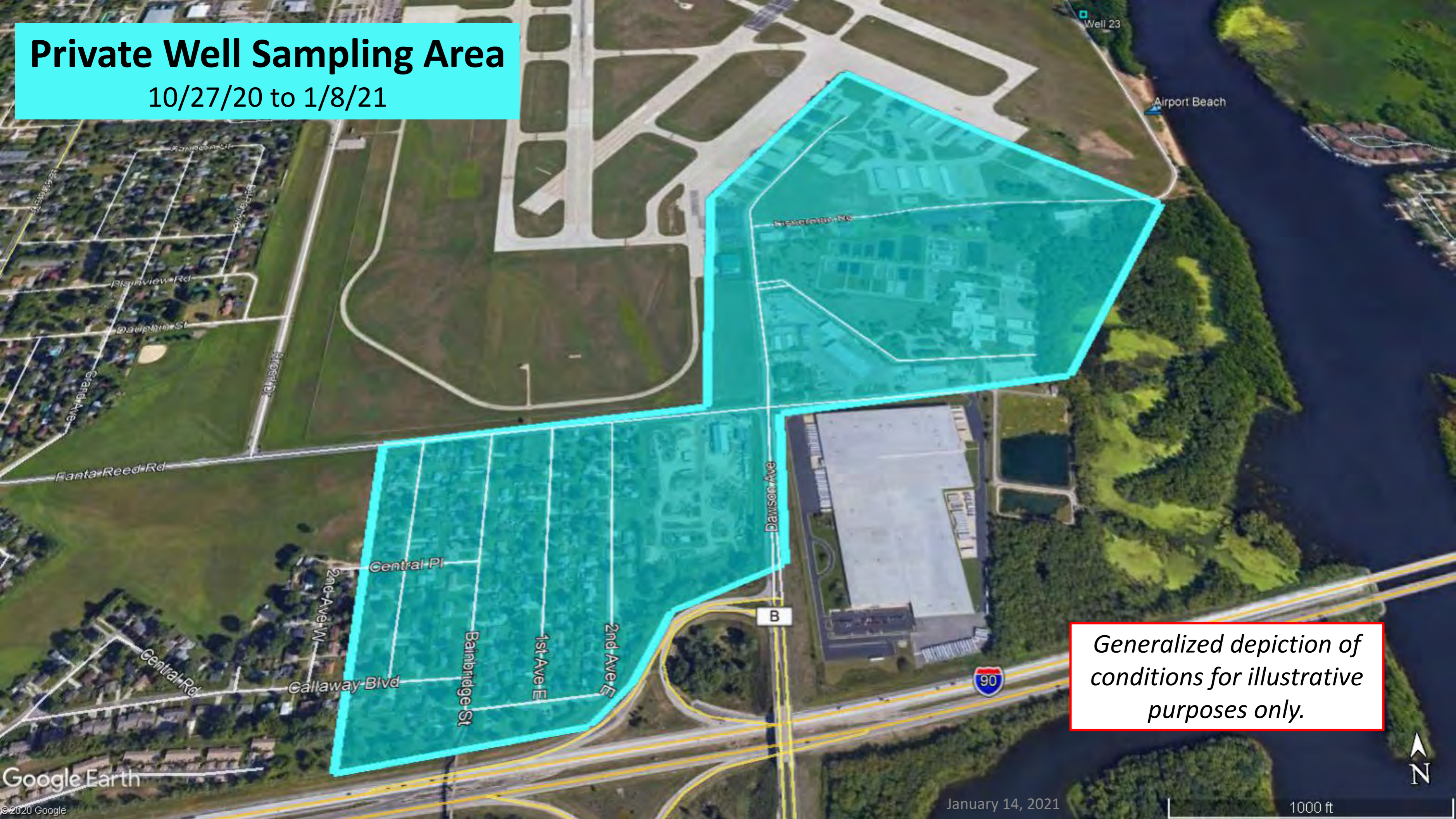


Generalized depiction of conditions for illustrative purposes only.



Private Well Sampling Area

10/27/20 to 1/8/21



Generalized depiction of conditions for illustrative purposes only.



Private Well Sampling (through January 8)

In the Target Sampling Area

109 wells sampled at **106** properties (10/27/20 - 1/5/21)

14 samples still waiting for results from lab

55 samples were **below** DNR's proposed standards

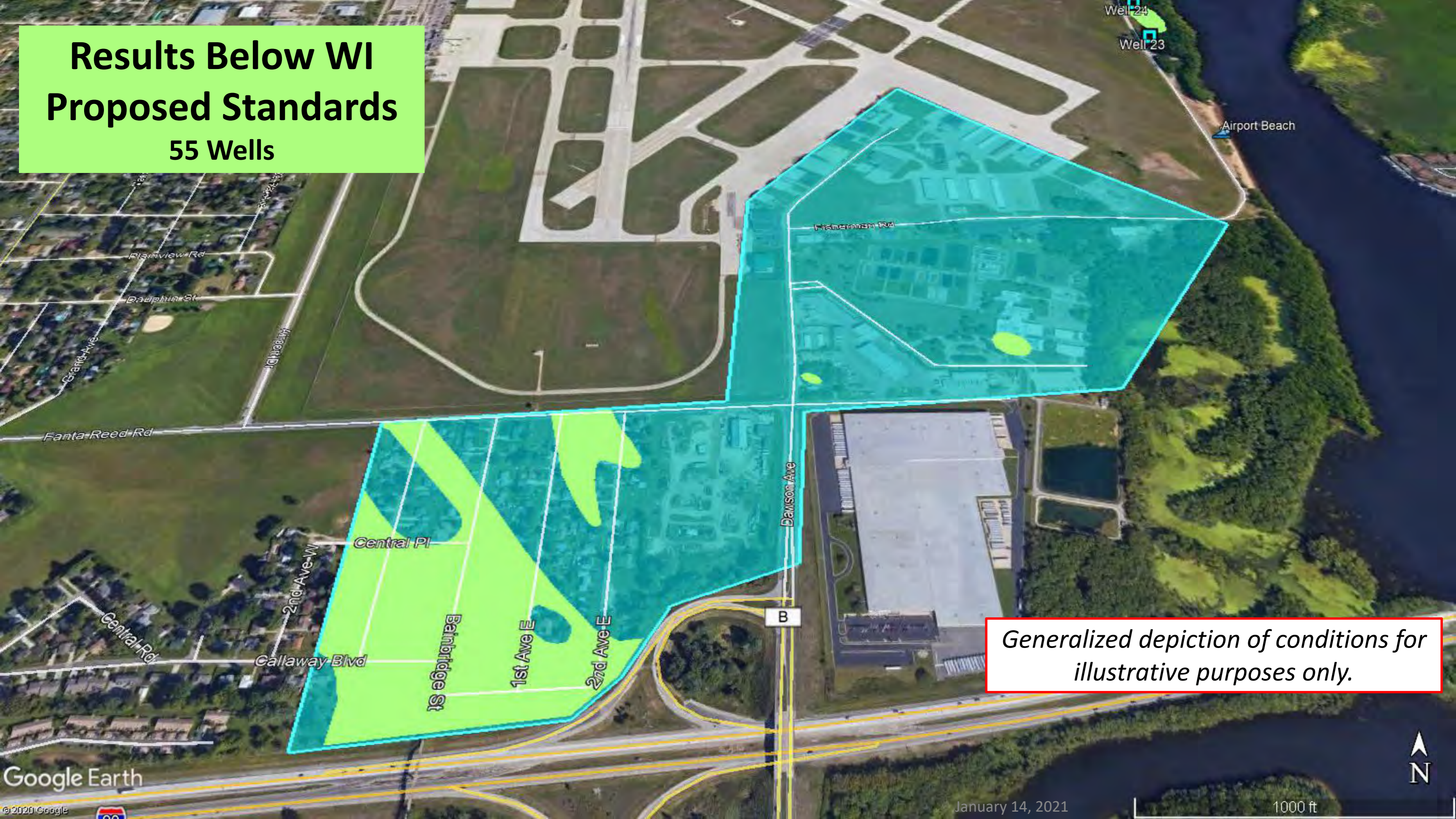
40 samples were **above** DNR's proposed standards

20 properties with wells that have declined or not responded

23 properties w/o wells that have not responded

Results Below WI Proposed Standards

55 Wells

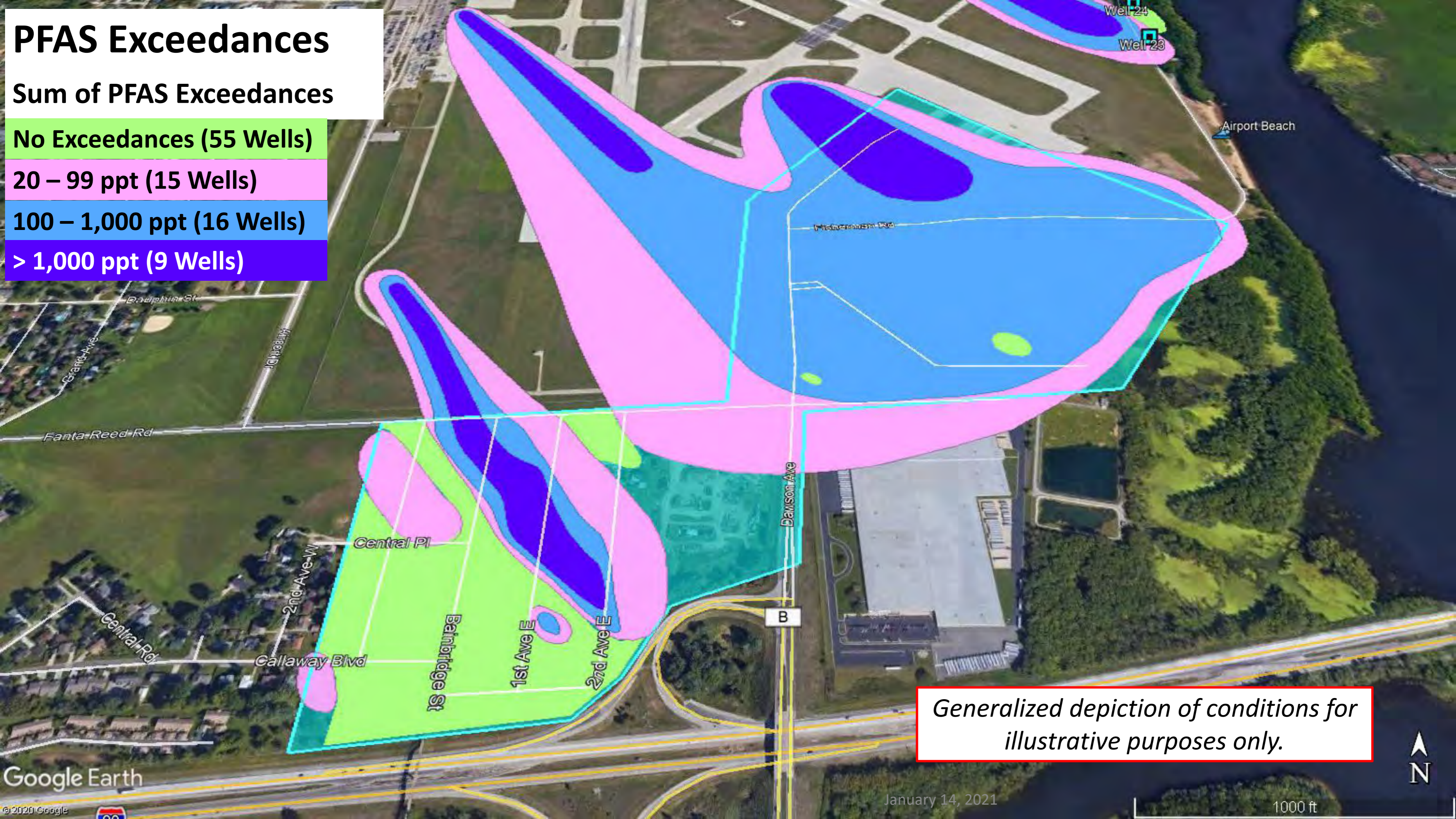


Generalized depiction of conditions for illustrative purposes only.

PFAS Exceedances

Sum of PFAS Exceedances

- No Exceedances (55 Wells)
- 20 – 99 ppt (15 Wells)
- 100 – 1,000 ppt (16 Wells)
- > 1,000 ppt (9 Wells)



Generalized depiction of conditions for illustrative purposes only.

PFAS Exceedances

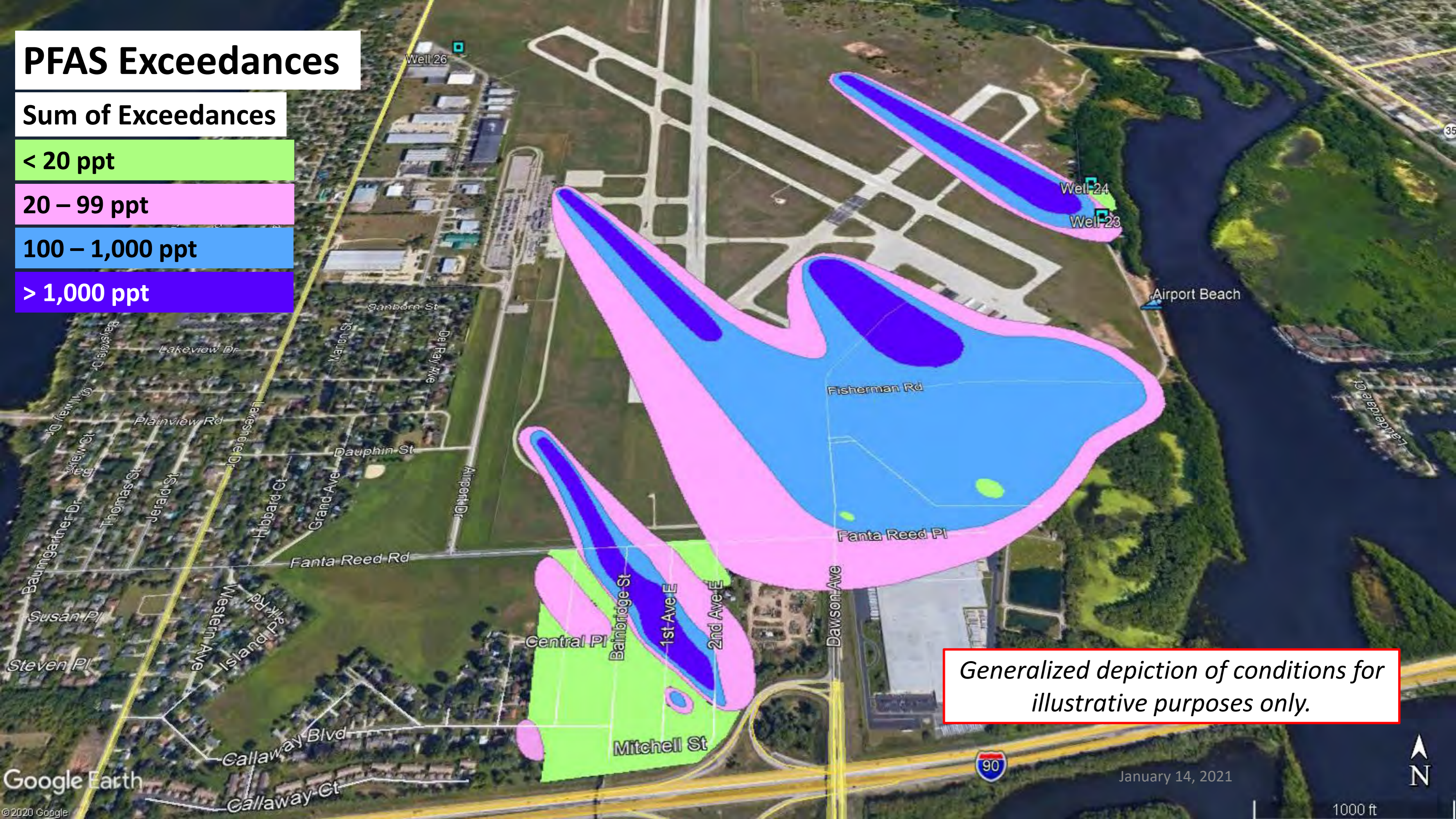
Sum of Exceedances

< 20 ppt

20 – 99 ppt

100 – 1,000 ppt

> 1,000 ppt



Generalized depiction of conditions for illustrative purposes only.

Bottled Water (as of 1/8/21)

Requested by and provided to 32 of 36 homes eligible 4 wells non-drinking water wells

- 4 homes have declined or not responded to bottled water offer

Recommended for drinking, cooking, and brushing teeth

Provided by Culligan of La Crosse

Bottled from a municipal water system

Filtered & treated

- Carbon filter, reverse osmosis, distillation & other methods

Sampled for PFAS

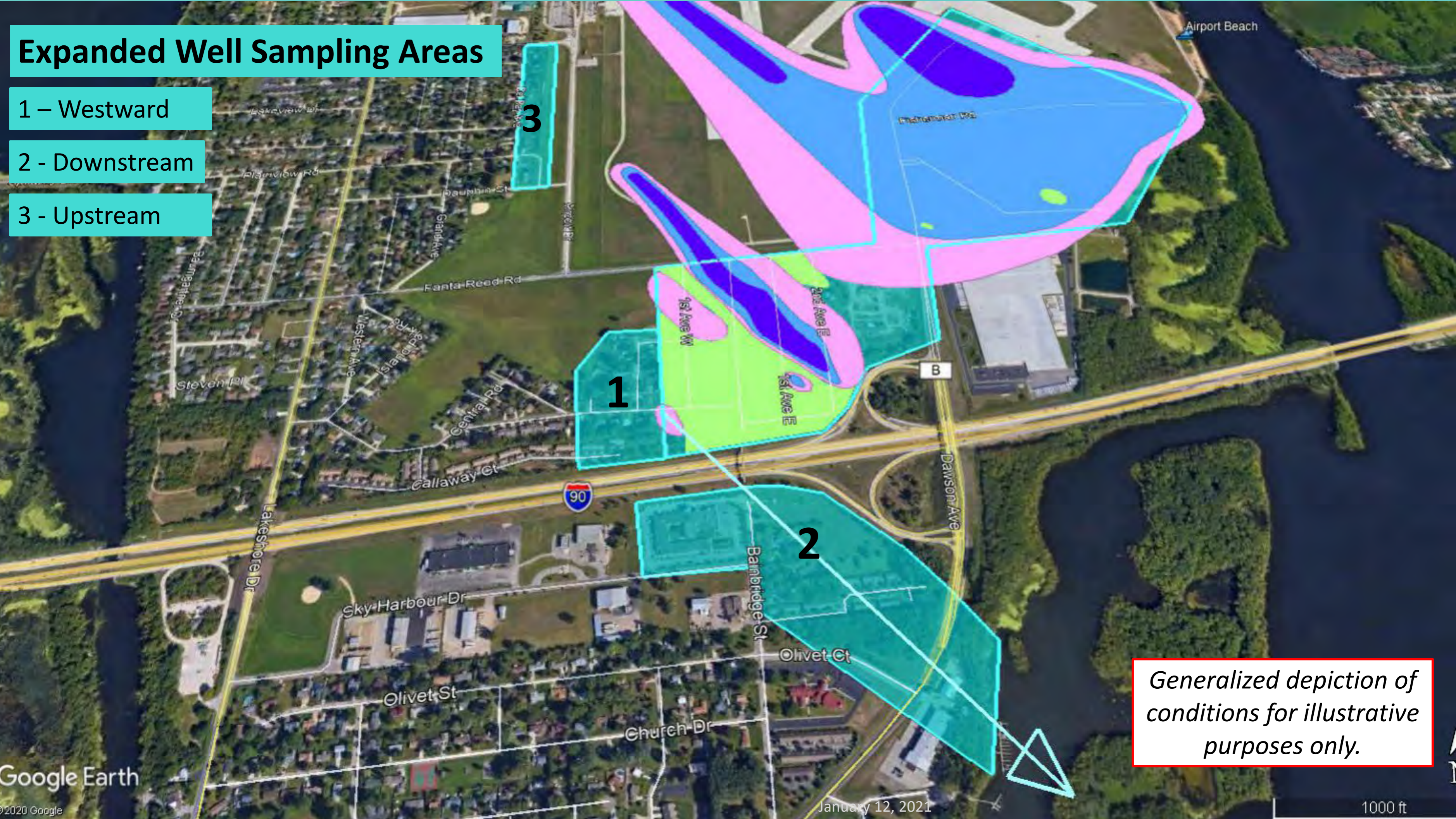
No PFAS was detected in the sample of Culligan Water

Expanded Well Sampling Areas

1 – Westward

2 - Downstream

3 - Upstream



Generalized depiction of conditions for illustrative purposes only.

Next Steps

Resample 8 – 10 wells that were just below standards

Letters to about 50 Residents in Expanded Sampling Areas

Residents sign and send access agreements back to OS Group

- Mail, email or online at City webpage

OS Group will sample wells

- Outside spigots

Prepare and submit updates for the DNR

Continue investigation of groundwater at the airport

For more information

www.cityoflacrosse.org/wells

The OS Group

John Storlie, PG

PFAS@theOSgrp.com

608-668-2718