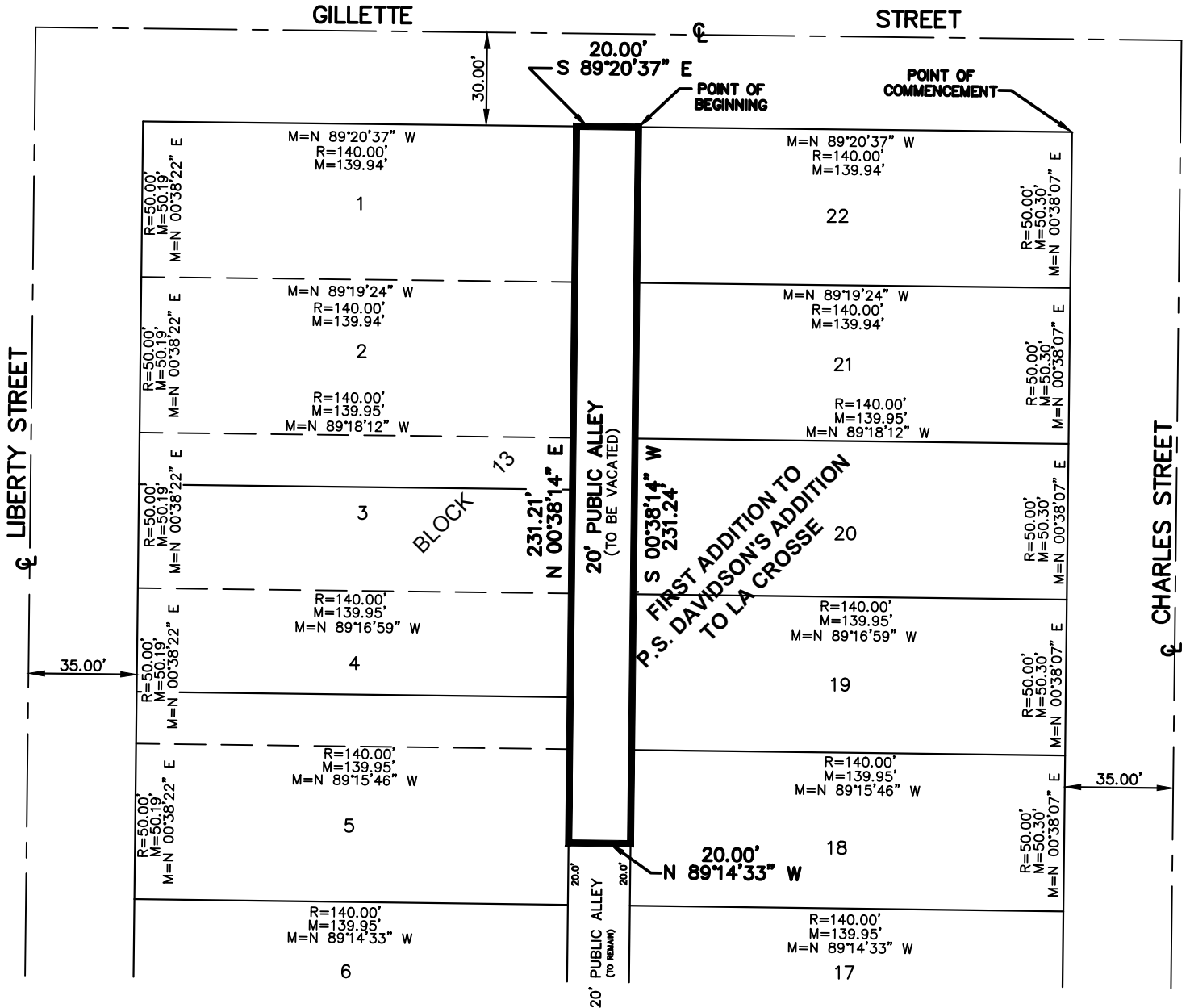
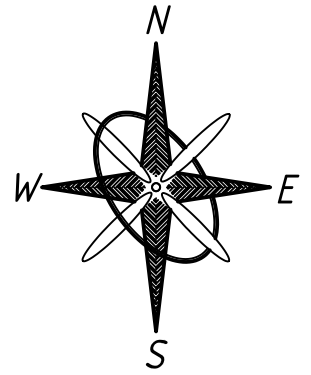


EXHIBIT B

PROPOSED PARTIAL ALLEY VACATION

CONTAINING AN AREA OF 4,624.5 SQ.FT.



NE 1/4 - SW 1/4 SEC. 20 T16N R7W

KNIGHT
Engineers & Architects

Knight E/A, Inc.
221 N. LaSalle Street, Suite 300
Chicago, Illinois 60601-1211
Phone (312) 577-3300
Fax (312) 577-3526
knightea.com

CITY OF LA CROSSE FIRE DEPARTMENT

400 LA CROSSE STREET, LA CROSSE, WI 54601

LA CROSSE FIRE STATION #4

DRAWN BY: JV	DATE: 02/23/2021	SCALE: N.T.S.	PROJECT MANAGER: SB
			PROJECT: 7723.01