

STORM MANHOLE
RIM = 731.92
I.E.N. = 725.17
I.E.S. = 725.17
I.E.E. = 725.32
I.E.W. = 725.42

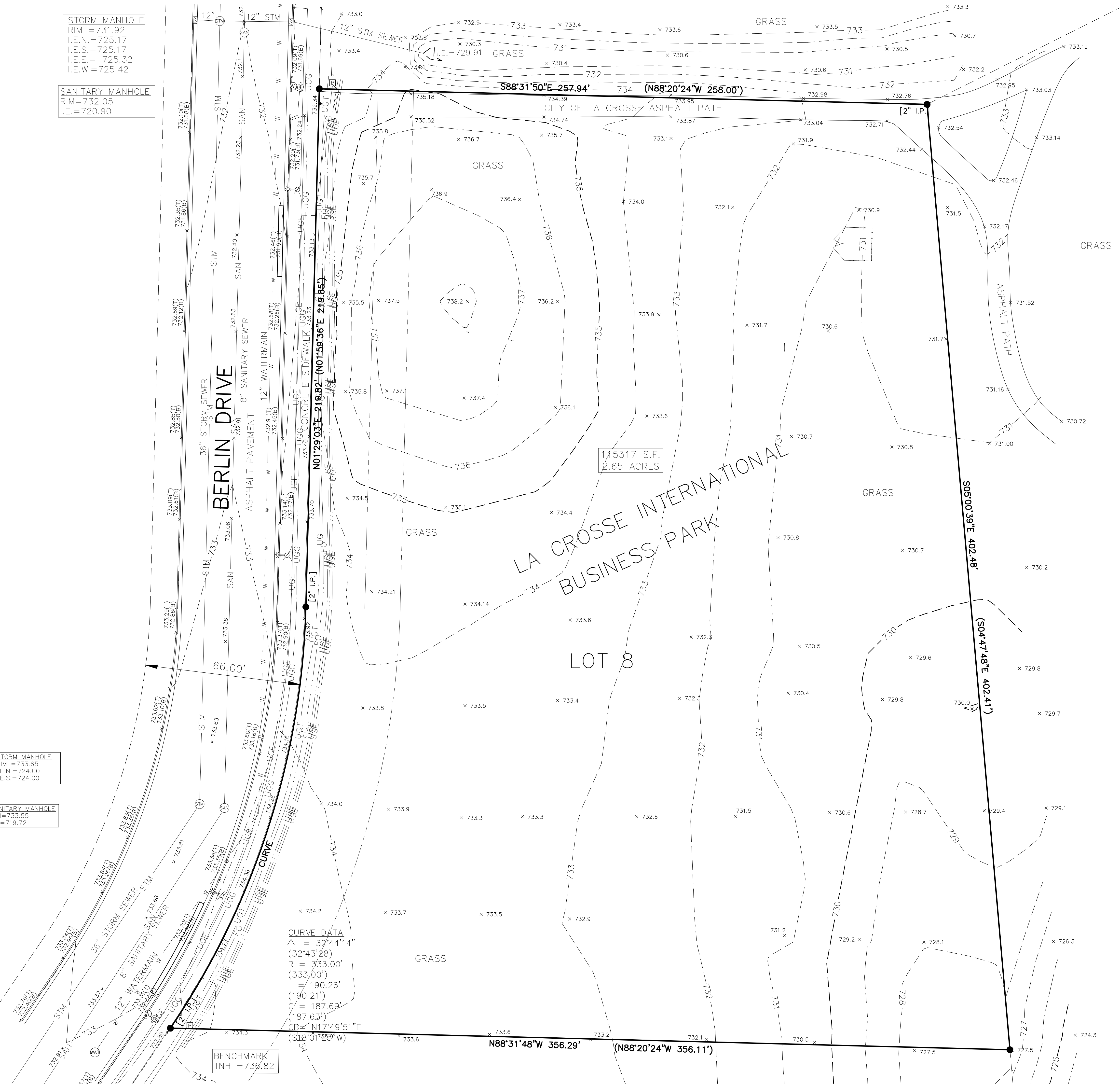
SANITARY MANHOLE
RIM = 732.05
I.E. = 720.90

STORM MANHOLE
RIM = 733.65
I.E.N. = 724.00
I.E.S. = 724.00

SANITARY MANHOLE
RIM = 733.55
I.E. = 719.72

CURVE DATA
Δ = 32°44'14"
(32°43'28")
R = 333.00'
(333.00')
L = 190.26'
(190.21')
C = 187.69'
(187.63')
CB = N17°49'51"E
(S18°01'29"W)

BENCHMARK
TNH = 736.82



NOTES
-SURVEYOR HAS MADE NO INVESTIGATION OR INDEPENDENT SEARCH FOR EASEMENTS OF RECORD OR ENCUMBRANCES, RESTRICTIVE COVENANTS, OWNERSHIP TITLE EVIDENCE, OR ANY OTHER FACTS THAT AN ACCURATE AND CURRENT TITLE SEARCH MAY DISCLOSE.
-THE UNDERGROUND LOCATION OF PUBLIC UTILITIES WERE MARKED BY REPRESENTATIVES OF THOSE COMPANIES. THE LOCATION OF CLIENT OWNED UNDERGROUND UTILITIES WERE NOT MARKED. THE LOCATION OF EXISTING UTILITIES, BOTH UNDERGROUND AND OVERHEAD, ARE APPROXIMATE ONLY AND HAVE NOT BEEN INDEPENDENTLY VERIFIED BY THE OWNER OR THE REPRESENTATIVES. THE CONTRACTOR SHALL BE RESPONSIBLE FOR DETERMINING THE EXACT LOCATION OF ALL EXISTING UTILITIES, WHETHER SHOWN ON THESE PLANS OR NOT, BEFORE COMMENCING WORK. THE CONTRACTOR SHALL BE FULLY RESPONSIBLE FOR ALL DAMAGE WHICH MIGHT BE CAUSED BY THE CONTRACTOR'S FAILURE TO LOCATE AND PRESERVE ALL UTILITIES. THERE MAY BE MORE UNDERGROUND UTILITY INSTALLATIONS WITHIN THE PROJECT AREA THAT ARE NOT SHOWN.
-ELEVATIONS ARE BASED ON WISCONSIN DEPARTMENT OF TRANSPORTATION MONUMENT F 231 1985, TOP OF STAINLESS STEEL ROD 716.59 (NAVD 88).

DESCRIPTION
LOT 8 OF LA CROSSE INTERNATIONAL BUSINESS PARK, CITY OF LA CROSSE, LA CROSSE COUNTY, WISCONSIN.

LEGEND

- SET 3/4" x 18" IRON BAR (1.5 LBS/AIN FT)
- FOUND 3/4" IRON BAR (UNLESS NOTED)
- () RECORDED AS BEARINGS AND/OR DISTANCES
- SPOT ELEVATION
- IB IRON BAR
- IP IRON PIPE
- I.E. INVERT ELEVATION
- T/PED TELEPHONE PESTIVAL
- TNH TOP NUT HYDRANT
- PLATTED OR RIGHT OF WAY LINES
- SECTION OR QUARTER LINE
- UTILITY EASEMENT
- SANITARY SEWER MANHOLE
- SANITARY SEWER LINE
- STORM SEWER MANHOLE
- STORM SEWER LINE
- CURB INLET
- WATER LINE
- HYDRANT
- WATER VALVE
- WATER MANHOLE
- UTILITY PESTIVAL
- UNDERGROUND FIBER OPTIC
- UNDERGROUND GAS
- UNDERGROUND ELECTRIC
- UNDERGROUND TELEPHONE
- LIGHT POLE
- DECIDUOUS TREE

REVISIONS	BY

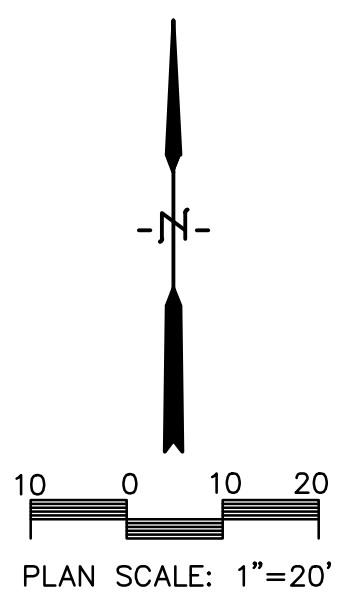
PARAGON ASSOCIATES
Environmental Design & Consulting
CIVIL ENGINEERING · LANDSCAPE ARCHITECTURE · SURVEYING
632 COPELAND AVENUE, LA CROSSE, WI 54603
Tel: 608.781.3110 Fax: 608.781.3197 Paragon-Assoc.biz

PREPARED FOR:
XXXX

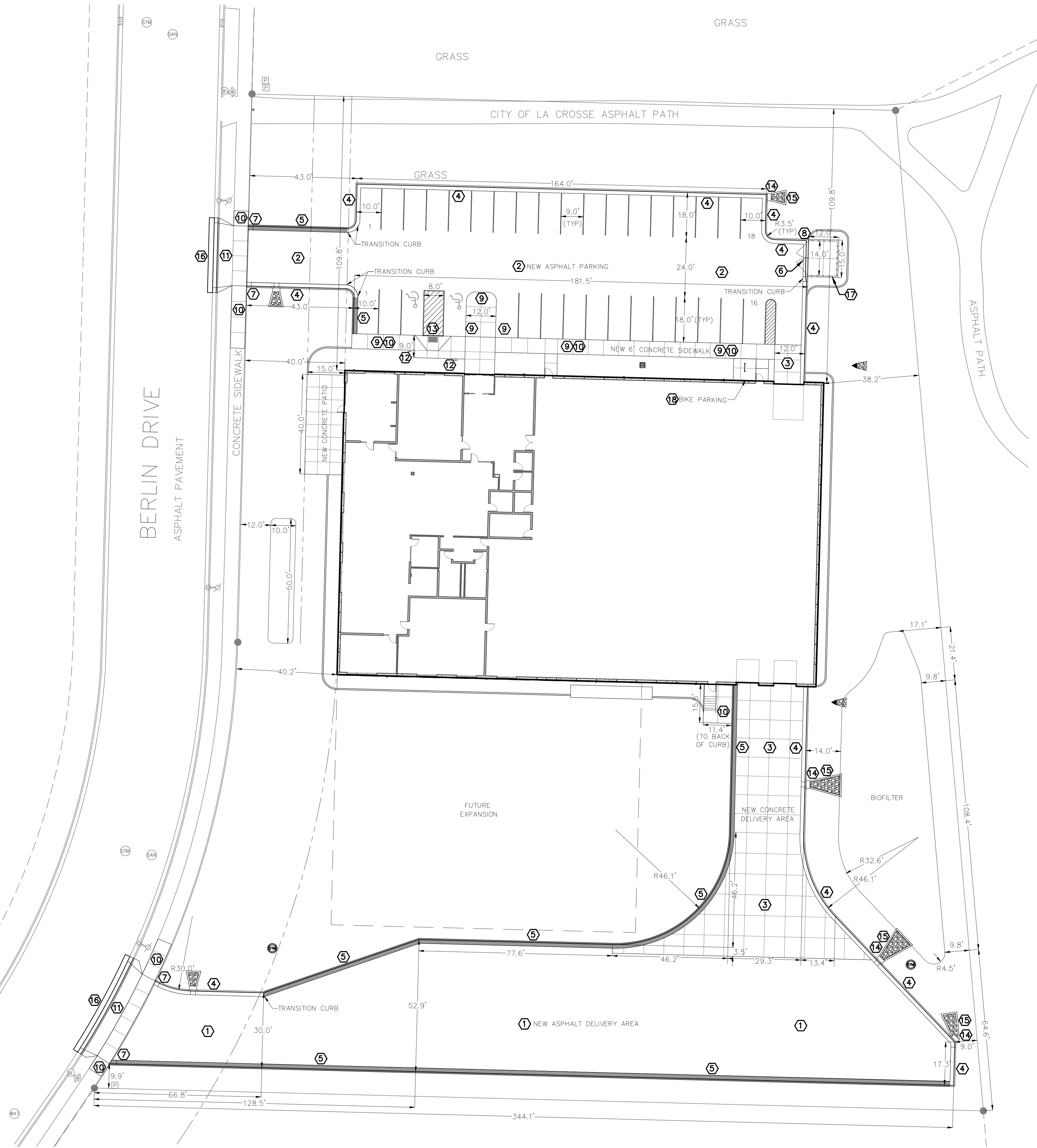
WERNER ELECTRIC
3120 BERLIN DRIVE
LA CROSSE, WISCONSIN
BOUNDARY AND TOPOGRAPHIC SITE MAP

CERTIFICATE
I, DAVID W. CORMAN, REGISTERED LAND SURVEYOR #2074, HEREBY CERTIFY THAT I HAVE SURVEYED AND MAPPED THE ABOVE PARCEL AT THE DIRECTION OF BRAD WINDLIE OF WERNER ELECTRIC, AND THE ATTACHED MAP IS TRUE AND CORRECT TO THE BEST OF MY KNOWLEDGE AND BELIEF.

DRAWN C.G.
PROJECT No 17-027
DATE 05/08/17
SCALE 1"=20'
CAD FILE 17-027 Werner Electric 03
SHEET



CO



SITE NOTES

- The location of existing utilities, both underground and overhead are approximate only and have not been independently verified by the owner or its representatives. The contractor shall be responsible for determining the exact location of all existing utilities, whether shown on these plans or not, before commencing work, and shall be fully responsible for any and all damages which might be caused by the contractor's failure to exactly locate and preserve any and all utilities. **CALL DIGGERS HOTLINE (800) 242-8511**
- The underground locations of the Public Utilities were marked by representatives of those companies. The locations of the privately owned underground utilities were not marked.
- There may be more underground utility installations within the project area that are not shown.
- It shall be the contractor's responsibility to arrange for any necessary inspections by local government that may be required.
- Any and all parties utilizing vertical datum shall always check into at least two (2) benchmarks to avoid mistakes due to hydrant adjustments or transpositional errors. Failure to do so will be considered tantamount to gross negligence and subject the offending party to any damages resulting therefrom.

SITE NOTES

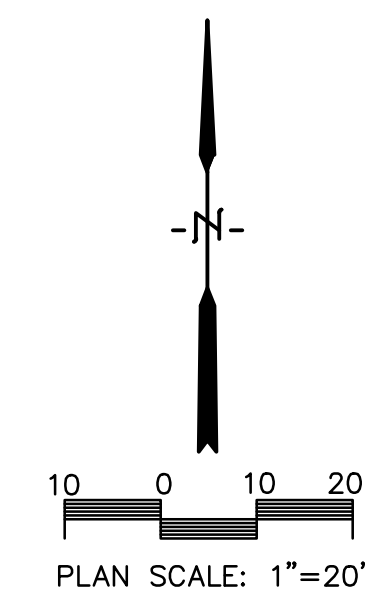
- ① SEE DETAIL (15) FOR HEAVY DUTY PAVEMENT SECTION
- ② SEE DETAIL (16) FOR LIGHT DUTY PAVEMENT SECTION
- ③ SEE DETAIL (17) FOR CONCRETE PAVEMENT SECTION
- ④ SEE DETAIL (18) FOR TYPICAL 24" CURB AND GUTTER SECTION
- ⑤ SEE DETAIL (19) FOR 24" CURB AND GUTTER SECTION - REVERSE SLOPE
- ⑥ SEE DETAIL (20) FOR TYPICAL 24" MOUNTABLE CURB AND GUTTER SECTION
- ⑦ SEE DETAIL (21) FOR END SECTION CURB AND GUTTER
- ⑧ SEE DETAIL (22) FOR END SECTION CORNER MOUNTABLE CURB
- ⑨ SEE DETAIL (23) FOR INTEGRAL CURB/SIDEWALK SECTION
- ⑩ SEE DETAIL (24) FOR SIDEWALK PAVING AND JOINTING
- ⑪ SEE DETAIL (25) FOR STANDARD CONCRETE APRON
- ⑫ SEE DETAIL (26) FOR DISABLED SIGN
- ⑬ SEE DETAIL (27) FOR SIDEWALK RAMP DETAIL
- ⑭ SEE DETAIL (28) FOR CURB CUT DETAIL
- ⑮ SEE DETAIL (29) FOR SPLASH PAD SECTION
- ⑯ REPLACE CURB AND GUTTER AND ASPHALT TO CITY OF LA CROSSE STANDARDS
- ⑰ 6" PVC FENCE WITH 14" GATE.
- ⑱ 5 BIKE WAVE BIKE RACK, SURFACE MOUNT BY BELSON OUTDOORS OR APPROVED EQUAL

REVISIONS	BY

PARAGON ASSOCIATES
 Environmental Design & Consulting
 CIVIL ENGINEERING · LANDSCAPE ARCHITECTURE · SURVEYING
 632 COPELAND AVENUE · LA CROSSE, WI 54603
 Tel: 608.781.3110 Fax: 608.781.3197 Paragon-Assoc.biz

PREPARED FOR:
XXXX

WERNER ELECTRIC
3120 BERLIN DRIVE
LA CROSSE, WISCONSIN
SITE PLAN



DRAWN	C.G.
PROJECT No	17-027
DATE	09/18/17
SCALE	1"=20'
CAD FILE	17-027 Werner Electric 03
SHEET	

C1

GRADING NOTES

- CONTOURS SHOWN ARE FOR FINISHED SURFACES, ANY ADJUSTMENT TO SUBGRADE IS THE CONTRACTOR'S RESPONSIBILITY.
- ALL DISTURBED AREAS THAT ARE UNPAVED ARE TO BE LANDSCAPED OR SODDED AS INDICATED ON THE LANDSCAPE PLAN.
- ALL LANDSCAPED OR SODDED AREAS SHALL HAVE A MINIMUM OF 6" OF TOPSOIL.
- SPOT ELEVATIONS SHALL TAKE PRECEDENCE OVER CONTOURS AND SLOPES SHOWN. HOWEVER, THE CONTRACTOR SHALL NOTIFY THE ENGINEER IF SPOT ELEVATIONS DO NOT APPEAR TO AGREE WITH THE CONTOURS AND SLOPES LABELED. SPOT ELEVATIONS AND SPECIFIC PROFILE INFORMATION SHALL BE USED FOR ESTABLISHING THE ELEVATION OF CURBS, DRIVEWAYS, AND OTHER UTILITIES.
- ALL FINISHED GRADING SHALL PROVIDE FOR A SMOOTH TRANSITION TO UNGRADED AREAS.
- ALL PVC STORM SEWER PIPING SHALL BE MINIMUM SDR 35
- EXISTING TREES TO REMAIN SHALL BE PROTECTED DURING CONSTRUCTION BY PLACING TEMPORARY FENCING AT THE DRIP LINE OF THE TREE CANOPY. IF IMPROVEMENTS NEED TO BE MADE WITHIN THE DRIP LINE, THE FENCE SHALL BE TEMPORARILY REMOVED AND REPLACED IMMEDIATELY FOLLOWING THE COMPLETION OF THE WORK.

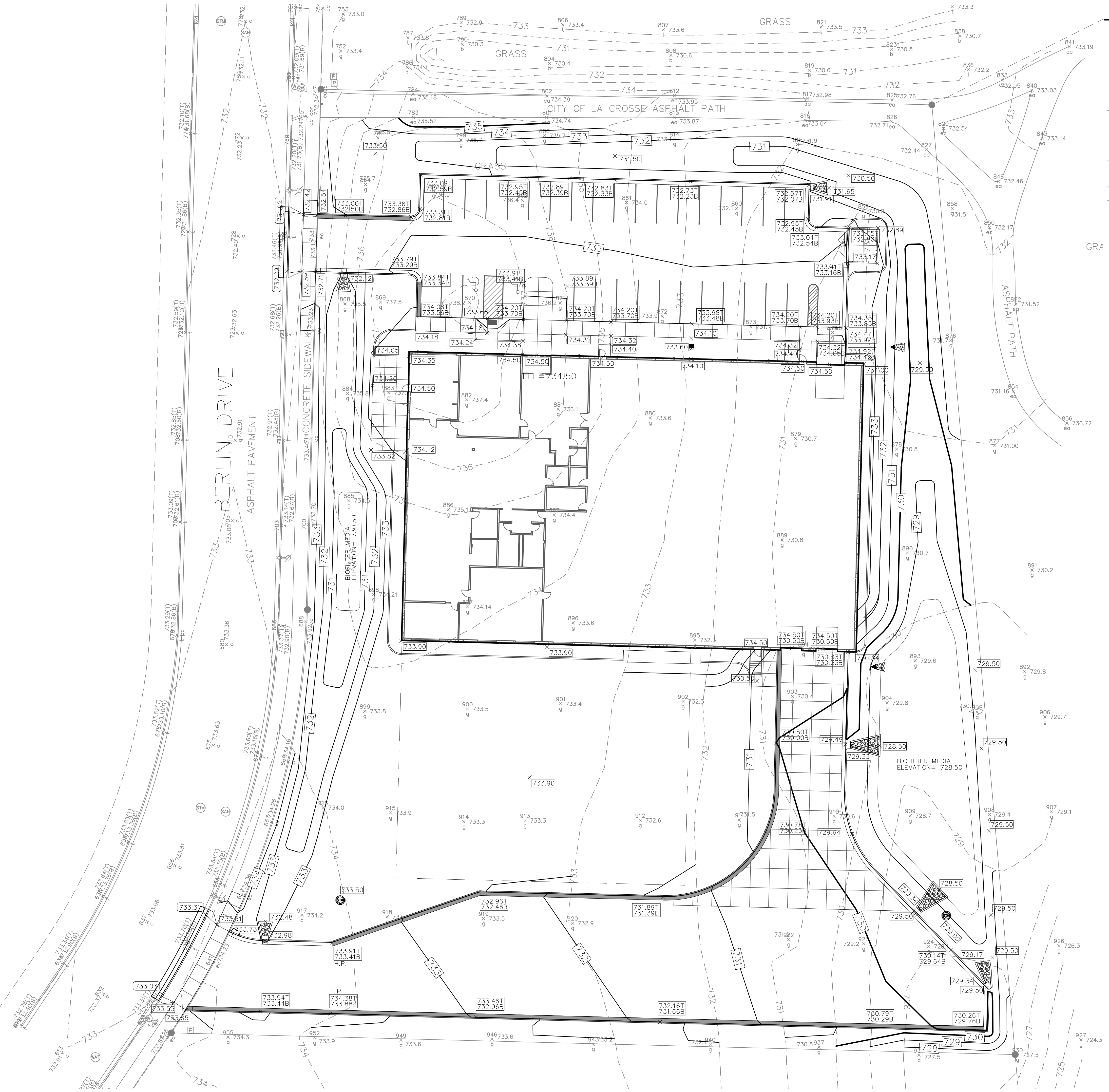
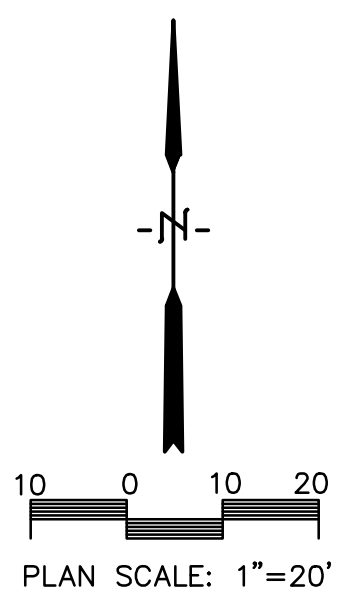
REVISIONS	BY

PARAGON ASSOCIATES
 Environmental Design & Consulting
 CIVIL ENGINEERING · LANDSCAPE ARCHITECTURE · SURVEYING
 632 COPELAND AVENUE · LA CROSSE, WI 54603
 Tel: 608.781.3110 Fax: 608.781.3197 Paragon-Assoc.biz

PREPARED FOR:
XXXX

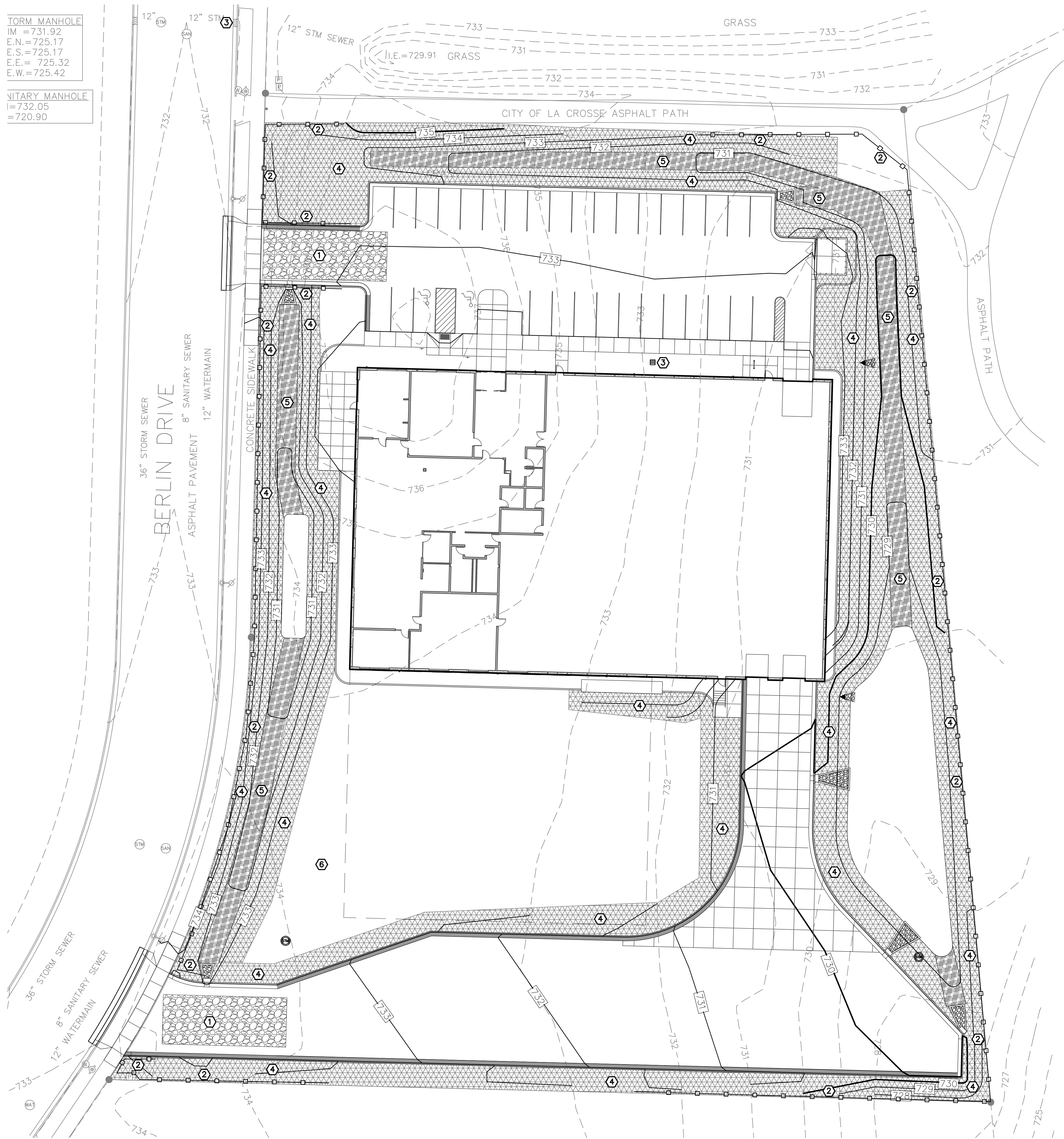
WERNER ELECTRIC
 3120 BERLIN DRIVE
 LA CROSSE, WISCONSIN
GRADING PLAN

DRAWN	C.G.
PROJECT No	17-027
DATE	09/18/17
SCALE	1"=20'
CAD FILE	17-027 Werner Electric 03
SHEET	
C2	



TORM MANHOLE
 IM = 731.92
 E.N. = 725.17
 E.S. = 725.17
 E.E. = 725.32
 E.W. = 725.42

WITARY MANHOLE
 I = 732.05
 = 720.90



STORM WATER CONSTRUCTION POLLUTION AND PREVENTION NOTES

SITE CLEARING SHALL APPLY TO ALL AREAS INSIDE LIMITS AS SHOWN ON THE PLANS. REMOVE ALL TREES COMPLETELY AS DIRECTED BY THE OWNER. ANY STRIPPED TOPSOIL SHALL BE STOCKPILED INSIDE THE LIMITS OR PLACED IMMEDIATELY ON SLOPES BEING RESTORED.

SEDIMENT CONTROL STRUCTURES BELOW SEEDED AREAS MUST REMAIN IN PLACE UNTIL THE ENTIRE AREA HAS ESTABLISHED A MATURE COVERING OF HEALTHY VEGETATION.

ALL DISTURBED AREAS SCHEDULED FOR PERMANENT COVER SHALL HAVE TOPSOIL APPLIED, AND BE SEEDED AND MULCHED AS SPECIFIED WITHIN 7 DAYS OF FINAL DISTURBANCE.

MAINTENANCE OF ALL INSTALLED EROSION AND SEDIMENT CONTROL DEVICES SHALL BE THE RESPONSIBILITY OF THE CONTRACTOR AND REMOVED WHEN NO LONGER NECESSARY.

- MINIMUM MAINTENANCE SHALL CONSIST OF, BUT NOT LIMITED TO:
- INSPECTING ALL EROSION AND SEDIMENT CONTROL DEVICES AFTER EACH RAINFALL.
 - FINISHED AREAS THAT HAVE BEEN DAMAGED OR ERODED SHALL BE RESTORED WITHIN THREE DAYS OF THE DAMAGE.
 - UNFINISHED AREAS THAT HAVE BEEN DAMAGED OR ERODED SHALL HAVE THE PREVIOUS MEASURE REAPPLIED WITHIN SEVEN DAYS.
 - VEHICLE TRACKING CONTROL APRON SHALL BE PROVIDED IF NECESSARY. SWEEP STREET AT THE END OF EACH DAY.
 - SILT FENCES SHALL BE MAINTAINED IN A FUNCTIONING MANNER. FENCES SHALL NOT BE ALLOWED TO SAG, FALL DOWN, OR BECOME FILLED WITH SILT ON THE BACK SIDE. IF SILT BUILDS UP BEHIND A SILT FENCE, IT SHALL BE REMOVED IMMEDIATELY. UNDER NO CIRCUMSTANCES SHALL SILT DEPOSITS BE ALLOWED TO REACH MORE THAN 3/4 THE HEIGHT OF THE FENCE.

SILT FENCE SHALL BE PLACED DOWN SLOPE OF ALL SOIL STOCK PILES DURING CONSTRUCTION IF LEFT MORE THAN SEVEN DAYS. STOCK PILES SHALL BE SEEDED AND MULCHED IF LEFT FOR MORE THAN 14 DAYS.

ADDITIONAL EROSION CONTROL FACILITIES MAY BE REQUIRED DUE TO UNFORESEEN PROBLEMS.

SEDIMENT CONTROL STRUCTURES BELOW LAWN AREAS MAY BE REMOVED ONCE SOIL AND FINAL LANDSCAPING IS IN PLACE. SEDIMENT CONTROL STRUCTURES BELOW SEEDED AREAS MUST REMAIN IN PLACE UNTIL THE ENTIRE AREA HAS ESTABLISHED A MATURE COVERING OF HEALTHY VEGETATION. SEDIMENT CONTROL STRUCTURES IN PAVED AREAS SHALL REMAIN IN PLACE UNTIL PAVING IS COMPLETE.

SEDIMENT DEPOSITED IN ROADS OR RIGHT OF WAY DITCHES ADJACENT TO THIS SITE AS A RESULT OF THIS WORK SHALL BE REMOVED. VEGETATION SHALL BE ESTABLISHED WHEN SEDIMENT REMOVAL DESTROYS THE EXISTING VEGETATION. THE ESTABLISHMENT OF VEGETATION SHALL BE IN THE SAME MANNER AS SPECIFIED FOR SEEDING SPECIFIED ELSEWHERE ON THIS PLAN.

- SEDIMENT CONTROL DURING CONSTRUCTION:
- A SILT FENCE SHALL BE INSTALLED ALONG ALL DOWN SLOPE EARTHWORK.
 - ALL MAINTENANCE PROCEDURES OUTLINED ABOVE SHALL APPLY.

SLOPES STEEPER THAN 5:1 SHALL BE PROTECTED WITH EROSION MATTING OR MULCHED WITH STRAW AND COVERED WITH JUTE NETTING.

PROVIDE CONCRETE WASHOUT AREA PER DETAIL (C5). UNDER NO CIRCUMSTANCES SHALL CONCRETE WASHOUT BE ALLOWED IN ANY OTHER LOCATION ON THE SITE.

NOTES

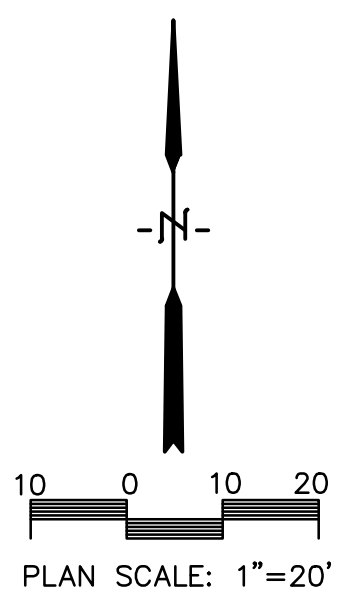
- ① SEE DETAIL (A/C6) FOR TRACKING PAD
- ② SEE DETAIL (B/C6) FOR SILT FENCE INSTALLATION
- ③ SEE DETAILS (C/C6) AND (D/C6) FOR INLET PROTECTION
- ④ EROSION CONTROL MATTING (E/C6) SHALL BE CURLEX BY AMERICAN EXCELSIOR OR APPROVED EQUAL. INSTALL TO MANUFACTURER RECOMMENDATION
- ⑤ EROSION CONTROL MATTING (F/C6) SHALL BE CURLEX III BY AMERICAN EXCELSIOR OR APPROVED EQUAL. INSTALL TO MANUFACTURER RECOMMENDATION
- ⑥ PROVIDE CONCRETE WASHOUT PER DETAIL (E/C6)
- ⑦ ALL DISTURBED AREAS NOT PROTECTED BY EROSION CONTROL MATTING SHALL BE SEEDED AND MULCHED

REVISIONS	BY

PARAGON ASSOCIATES
 Environmental Design & Consulting
 CIVIL ENGINEERING · LANDSCAPE ARCHITECTURE · SURVEYING
 632 COPELAND AVENUE · LA CROSSE, WI 54603
 Tel: 608.781.3110 Fax: 608.781.3197 Paragon-Assoc.biz

PREPARED FOR:
XXXX

WERNER ELECTRIC
 3120 BERLIN DRIVE
 LA CROSSE, WISCONSIN
EROSION CONTROL PLAN



DRAWN C.G.
PROJECT No 17-027
DATE 09/18/17
SCALE 1"=20'
CAD FILE 17-027 Werner Electric 03
SHEET

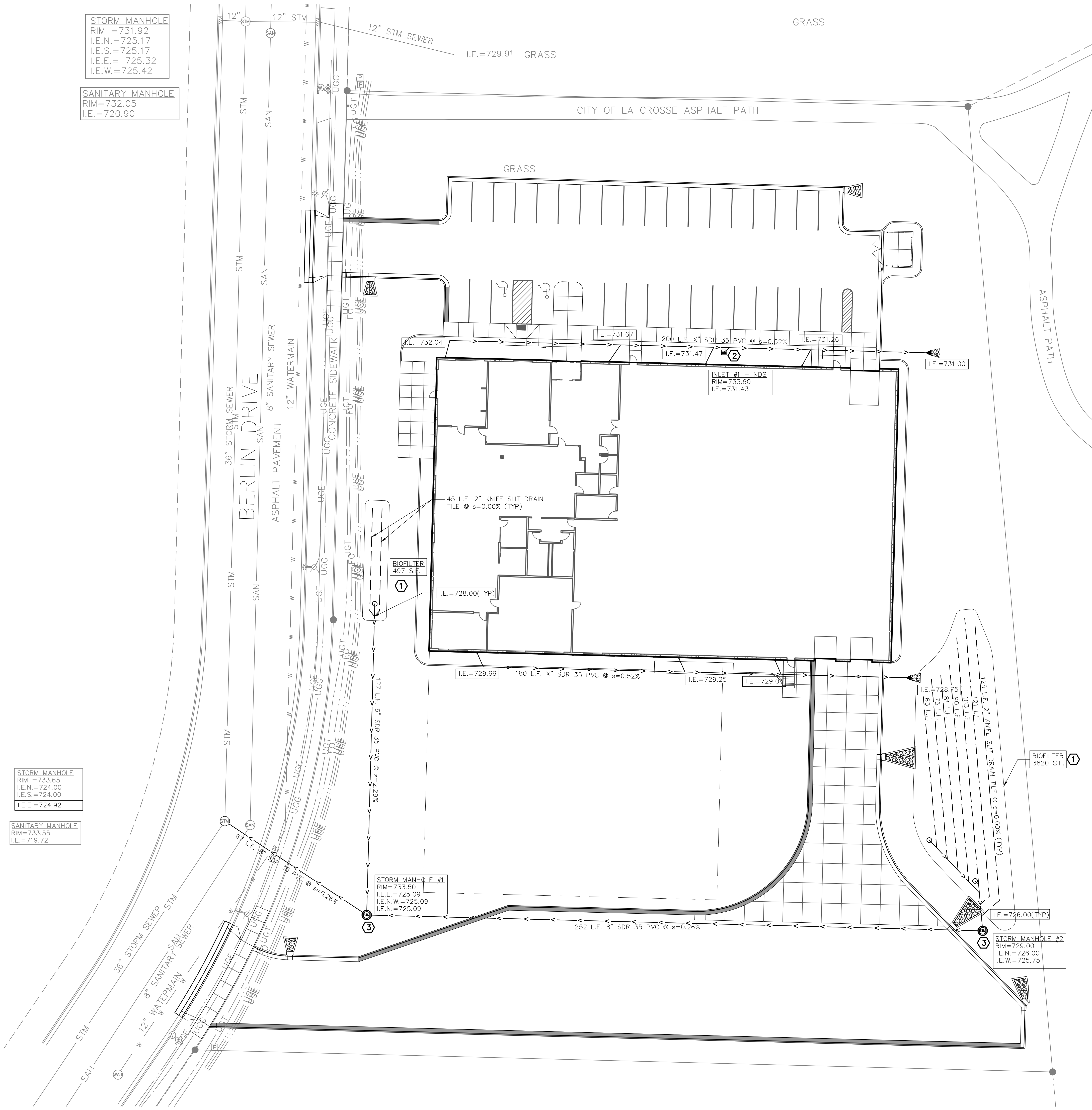
C3

STORM MANHOLE
RIM = 731.92
I.E.N. = 725.17
I.E.S. = 725.17
I.E.E. = 725.32
I.E.W. = 725.42

SANITARY MANHOLE
RIM = 732.05
I.E. = 720.90

STORM MANHOLE
RIM = 733.65
I.E.N. = 724.00
I.E.S. = 724.00
I.E.E. = 724.92

SANITARY MANHOLE
RIM = 733.55
I.E. = 719.72



UTILITY NOTES:

ALL WATER & SEWER (STORM & SANITARY) CONSTRUCTION SHALL COMPLY WITH THE LATEST EDITION OF "STANDARD SPECIFICATIONS FOR SEWER & WATER IN THE STATE OF WISCONSIN," ALONG WITH THE CITY OF LA CROSSE STANDARD SPECIFICATIONS, AS APPROPRIATE.

ALL WATER & SANITARY LATERALS SHALL HAVE A MINIMUM DEPTH 6' BELOW FINISHED FLOOR ELEVATIONS. THE CONTRACTOR IS TO COORDINATE ACTIVITIES & CONFIRM LOCATION & ELEVATION OF SERVICES WITH THE ENGINEER.

USE C.L.D.I.P. FOR ALL WATER MAIN.

ALL WATER SERVICES ARE 1" COPPER PIPE AND ARE TO INCLUDE A CORPORATION COCK VALVE AT MAIN AND A CURB STOP AT THE LOCATION SHOWN ON THE PLAT.

ALL WATER MAINS SHALL HAVE A MINIMUM OF 7.5' OF COVER.

SUITABLE ON-SITE GRANULAR MATERIAL SHALL BE USED FOR TRENCH BACKFILL TO PROPOSED ELEVATIONS. BACKFILL SHALL BE COMPACTED AS SPECIFIED.

ALL EXISTING INVERTS & LOCATIONS SHALL BE VERIFIED PRIOR TO CONSTRUCTION. ALL DISCREPANCIES FROM INFORMATION SHOWN ON THE PLANS SHALL BE REPORTED TO THE ENGINEER IMMEDIATELY.

CONTRACTOR SHALL IDENTIFY & MARK THE EXACT LOCATIONS OF ALL UNDERGROUND CONNECTIONS TO WATER AND SEWER MAINS, BENDS, CURB BOXES, CLEAN OUTS, ETC. ON THE AS-BUILT PLANS. COPIES OF THESE DOCUMENTS SHALL BE DELIVERED TO THE ENGINEER FOR RECORD.

LOCATION REQUIREMENT: NON-METALLIC SEWER/MAINS AND SERVICES MUST BE PROVIDED WITH TRACE WIRE OR OTHER METHODS IN ORDER TO BE LOCATED.

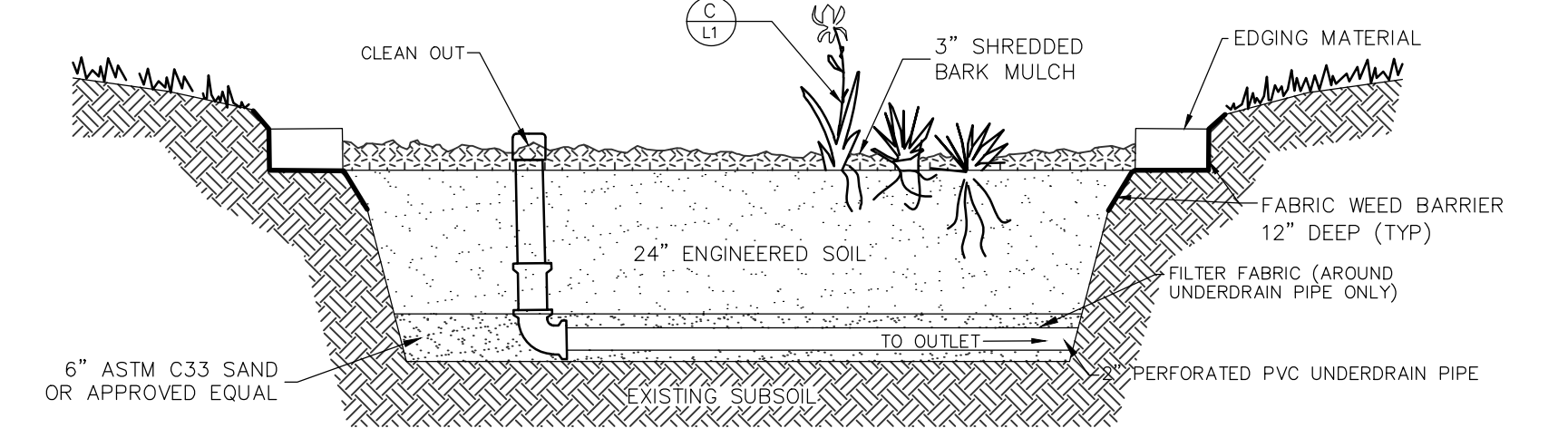
SHOP DRAWINGS FOR UTILITIES ARE REQUIRED.

ALL SANITARY SERVICES ARE 4" IN DIAMETER.

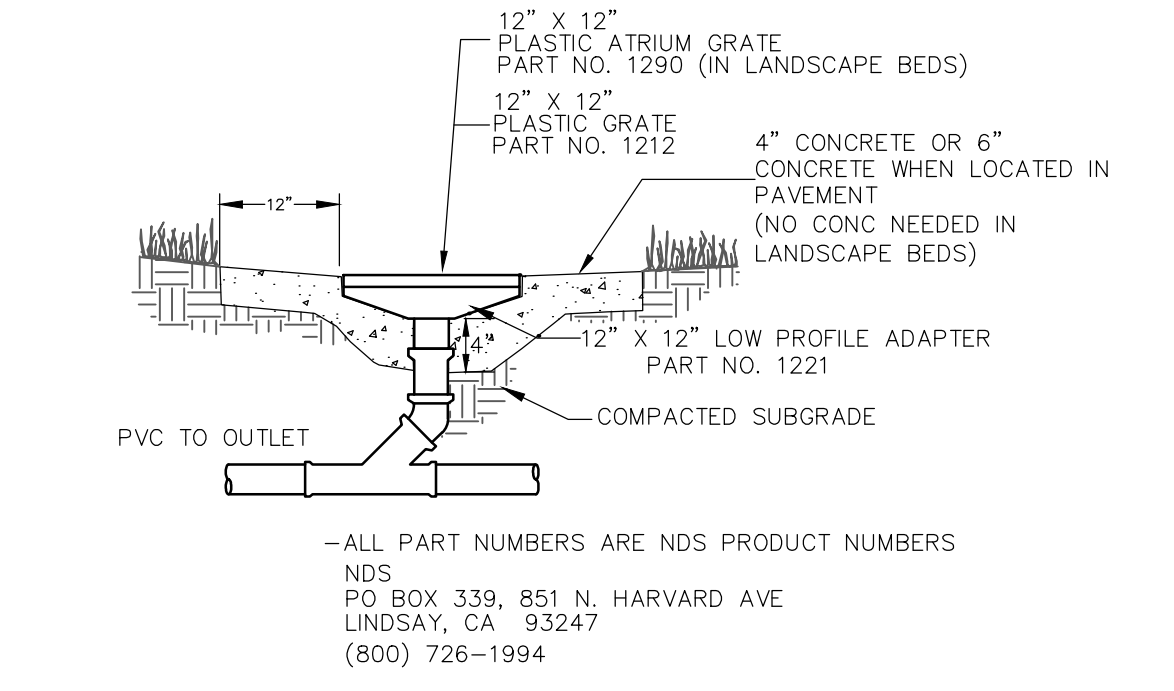
ALL MANHOLES SHALL BE BUILT WITH ECCENTRIC CONES.

UTILITY NOTES:

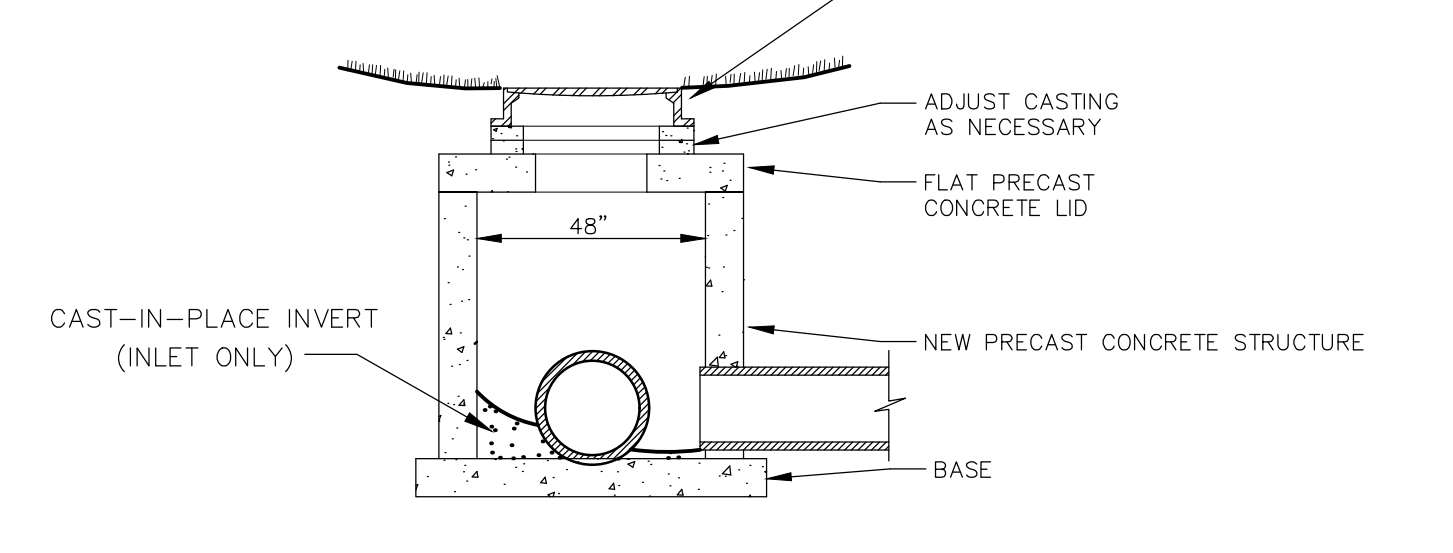
- ① BIOFILTER, SEE DETAIL (A/C4)
- ② NDS INLET, SEE DETAIL (B/C4)
- ③ STORM MANHOLE, SEE DETAIL (C/C4)



(A) BIOFILTER DETAIL
NO SCALE



(B) NDS INLET
NO SCALE



(C) MANHOLE FOR STORM SEWER
NO SCALE

REVISIONS	BY

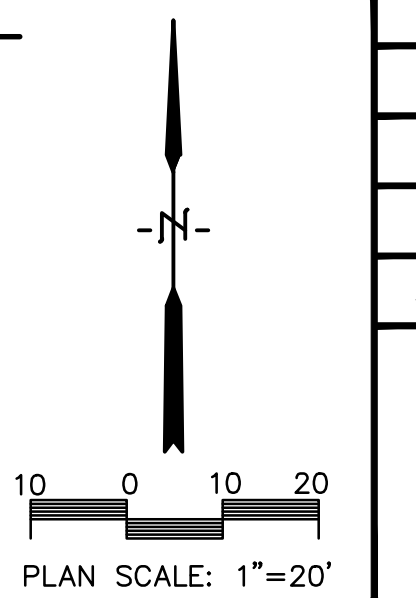
PARAGON ASSOCIATES
Environmental Design & Consulting
CIVIL ENGINEERING · LANDSCAPE ARCHITECTURE · SURVEYING
632 COPELAND AVENUE, LA CROSSE, WI 54603
Tel: 608.781.3110 Fax: 608.781.3197 Paragon-Assoc.biz

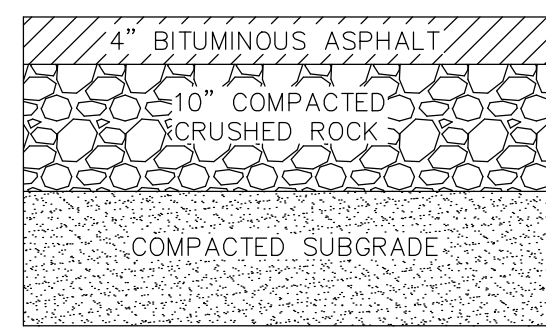
PREPARED FOR:
WERNER ELECTRIC

WERNER ELECTRIC
3120 BERLIN DRIVE
LA CROSSE, WISCONSIN
UTILITY PLAN

DRAWN	C.G.
PROJECT No	17-027
DATE	09/18/17
SCALE	1"=20'
CAD FILE	17-027 Werner Electric 03
SHEET	

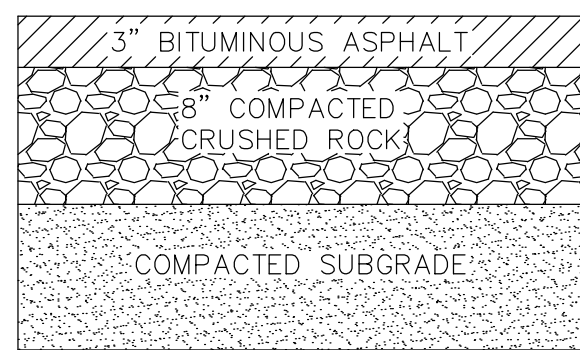
C4





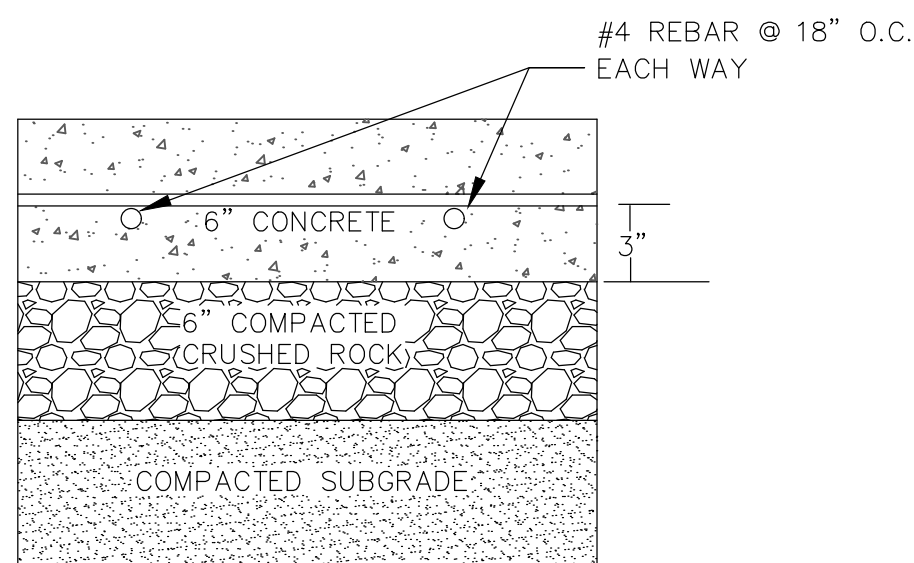
PLACE PAVEMENT USING ONE 1 3/4\"/>

A HEAVY DUTY PAVEMENT SECTION DETAIL
NO SCALE

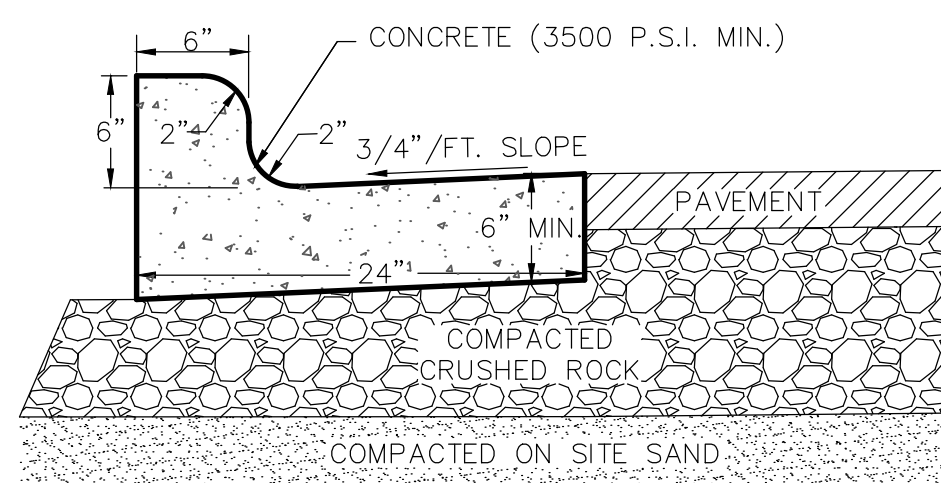


PLACE PAVEMENT USING ONE 1 1/2\"/>

B LIGHT DUTY PAVEMENT SECTION DETAIL
NO SCALE

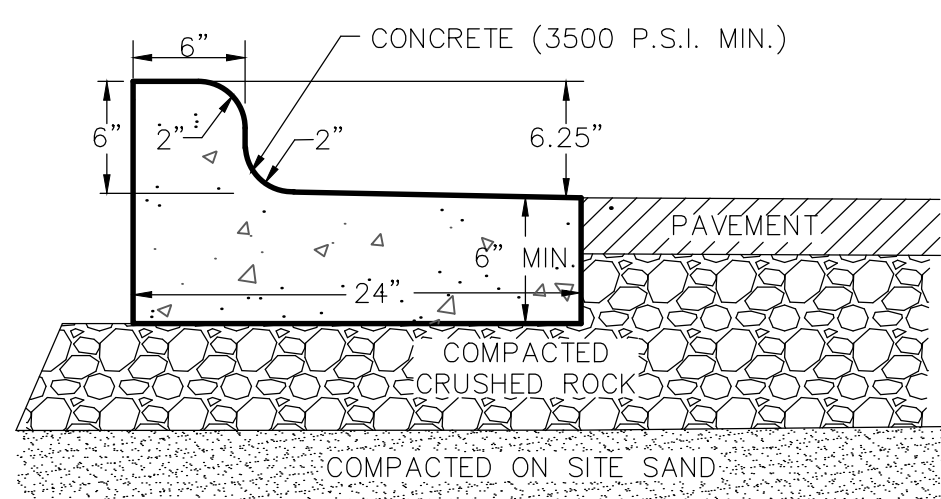


C CONCRETE PAVEMENT SECTION DETAIL
NO SCALE



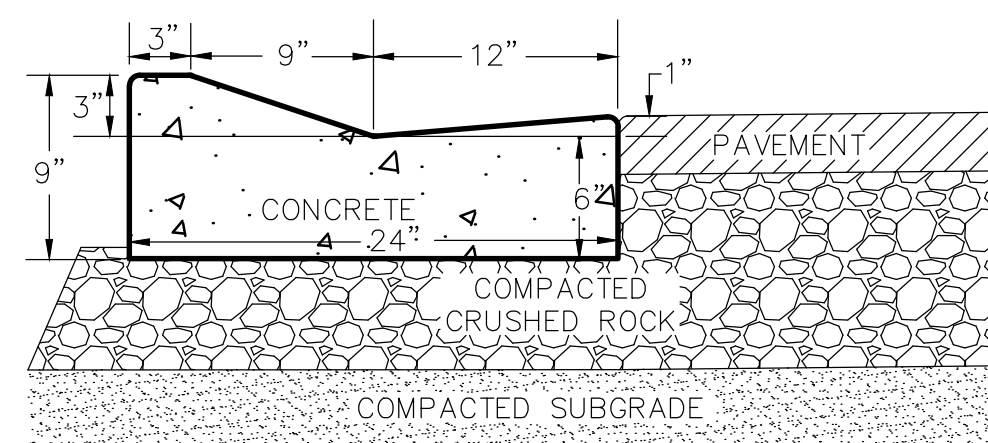
NOTE: 1 CONTROL JOINTS SHALL CONFORM WITH WISDOT 601.3.6
2 THE BOTTOM OF THE CURB AND GUTTER MAY BE CONSTRUCTED FLAT OR PARALLEL TO THE SLOPE OF THE BASE COURSE PROVIDED A MINIMUM 6\"/>

D TYPICAL 24\"/>



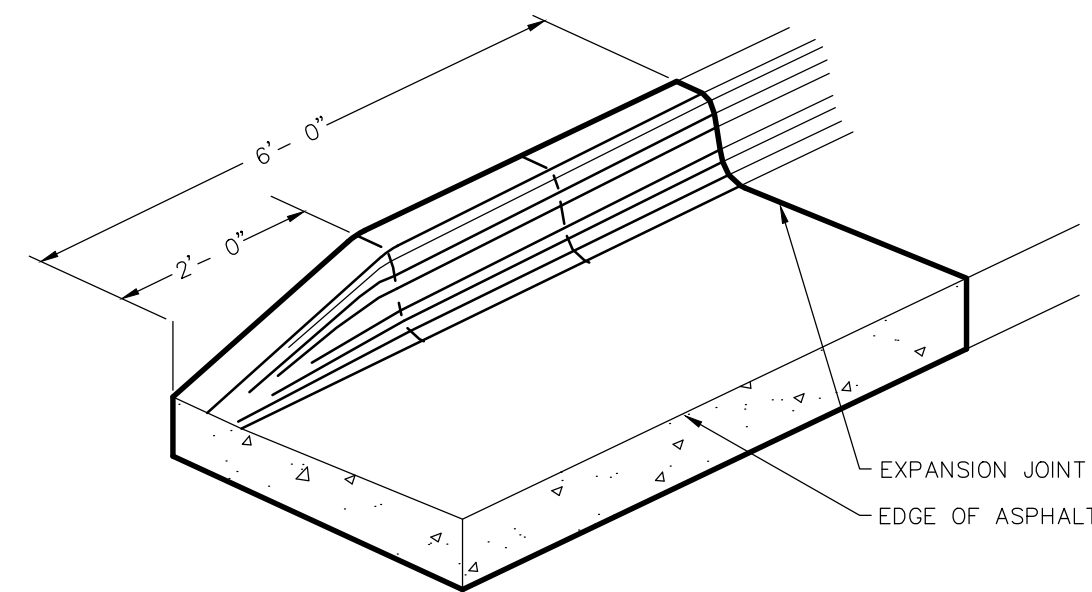
NOTE: 1 CONTROL JOINTS SHALL CONFORM WITH WISDOT 601.3.6
2 THE BOTTOM OF THE CURB AND GUTTER MAY BE CONSTRUCTED FLAT OR PARALLEL TO THE SLOPE OF THE BASE COURSE PROVIDED A MINIMUM 6\"/>

E 24\"/>

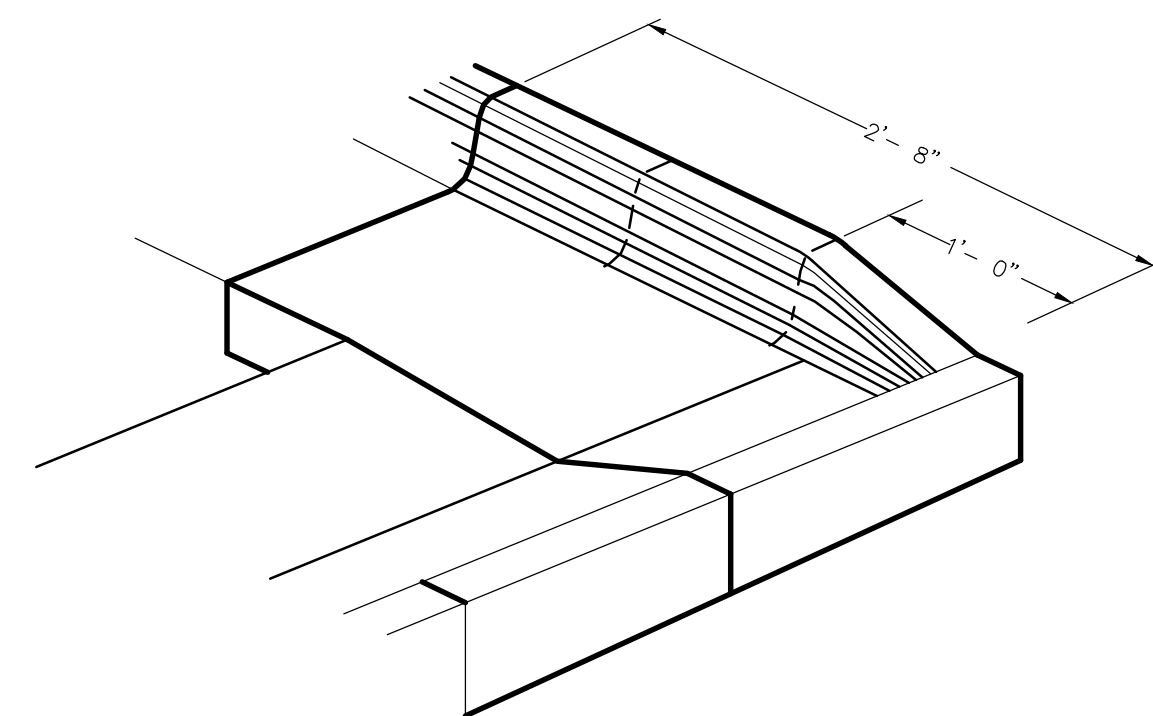


NOTE: ROCK UNDER CURB TO BE SAME DEPTH TO SUBGRADE AS ADJACENT PAVEMENT. HOWEVER, NOT LESS THAN 6\"/>

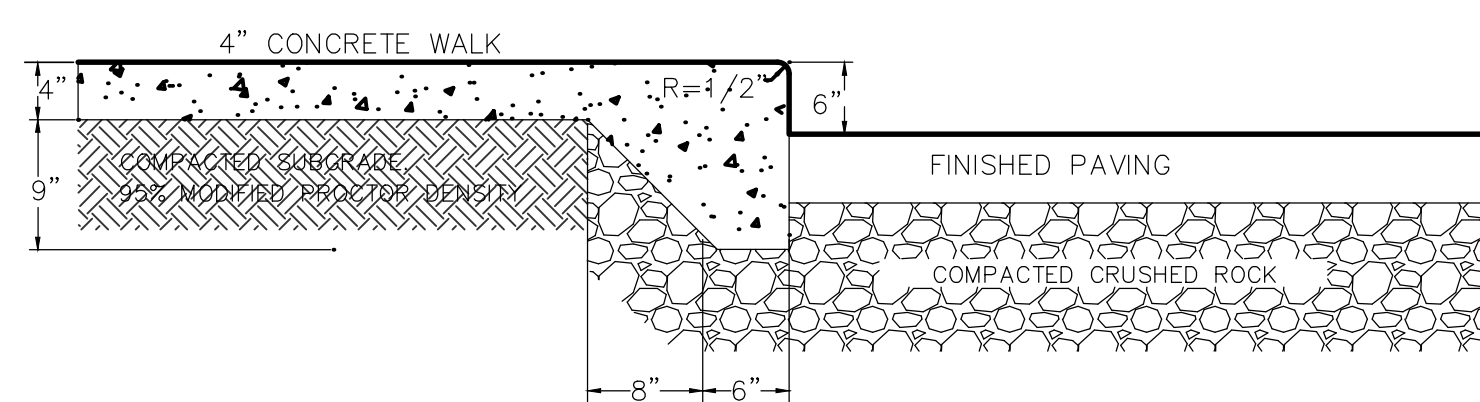
F TYPICAL 24\"/>



G END SECTION CURB & GUTTER
NO SCALE

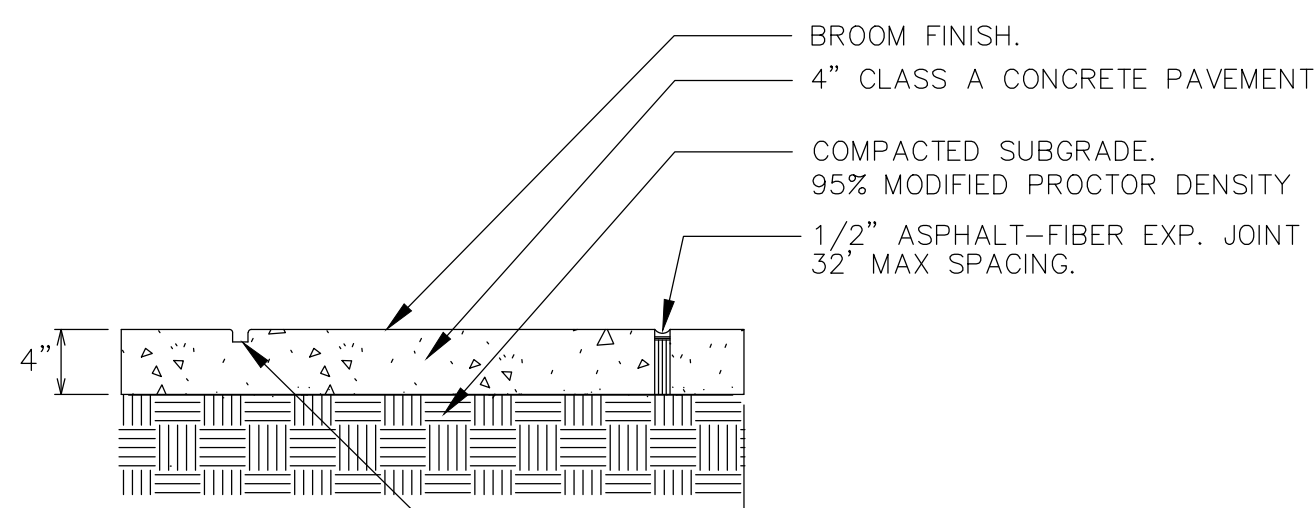


H END SECTION CORNER MOUNTABLE CURB
NO SCALE



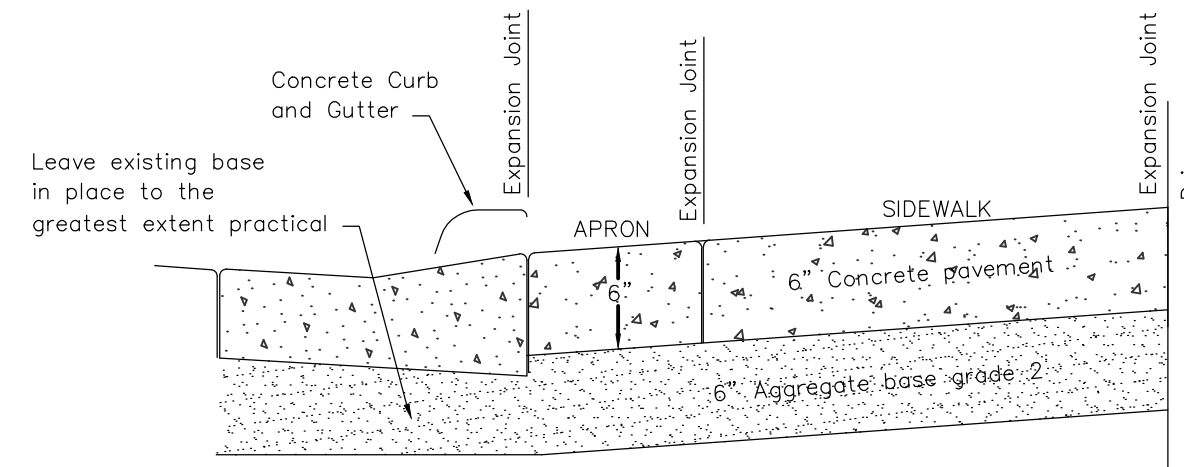
NOTE: ROCK UNDER CURB TO BE SAME DEPTH TO SUBGRADE AS ADJACENT PAVEMENT. HOWEVER, NOT LESS THAN 6\"/>

I INTEGRAL CURB/SIDEWALK SECTION
NO SCALE



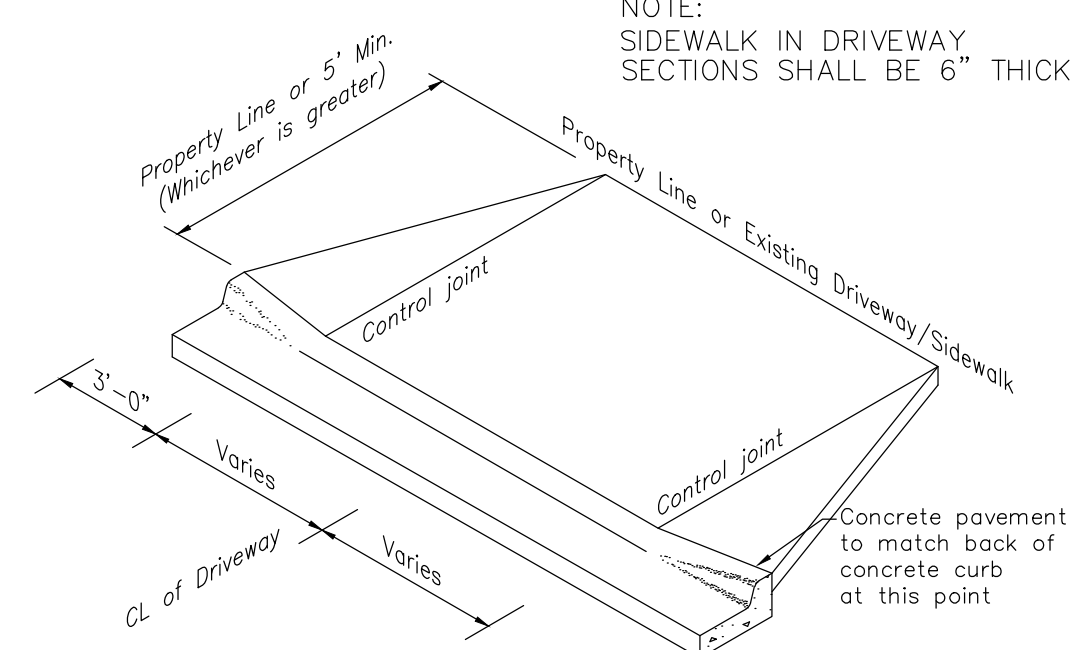
NOTE: SIDEWALK IN DRIVEWAY SECTIONS SHALL BE 6\"/>

J SIDEWALK PAVING AND JOINTING
NO SCALE



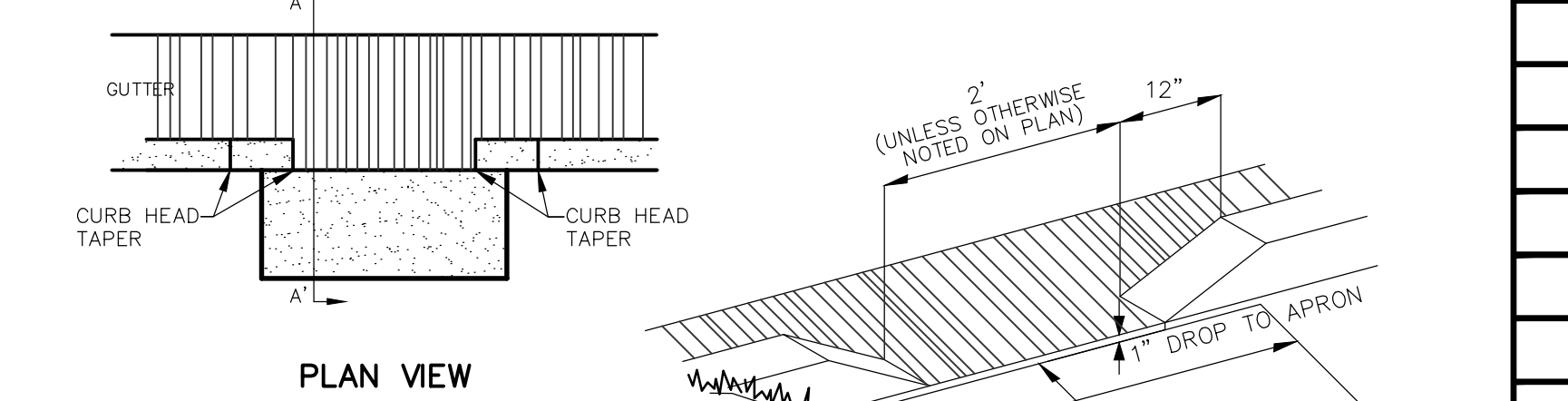
SECTION

NOTE: SIDEWALK IN DRIVEWAY SECTIONS SHALL BE 6\"/>

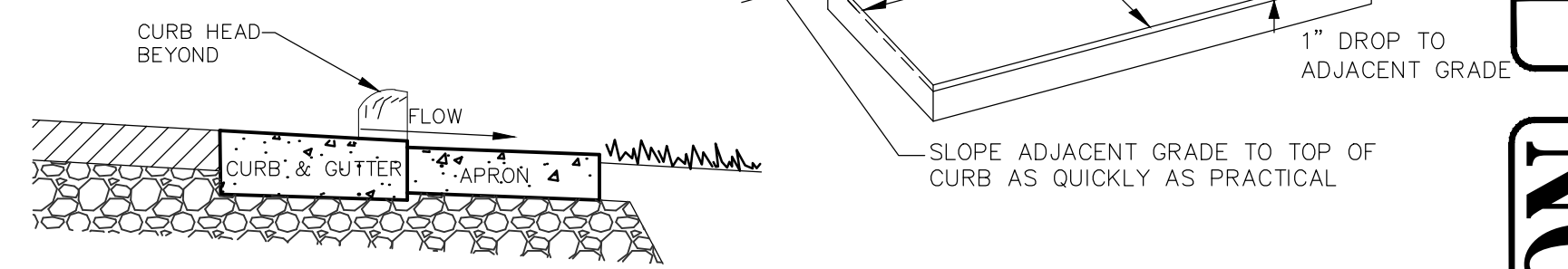


ISOMETRIC

K STANDARD CONCRETE APRON
NO SCALE

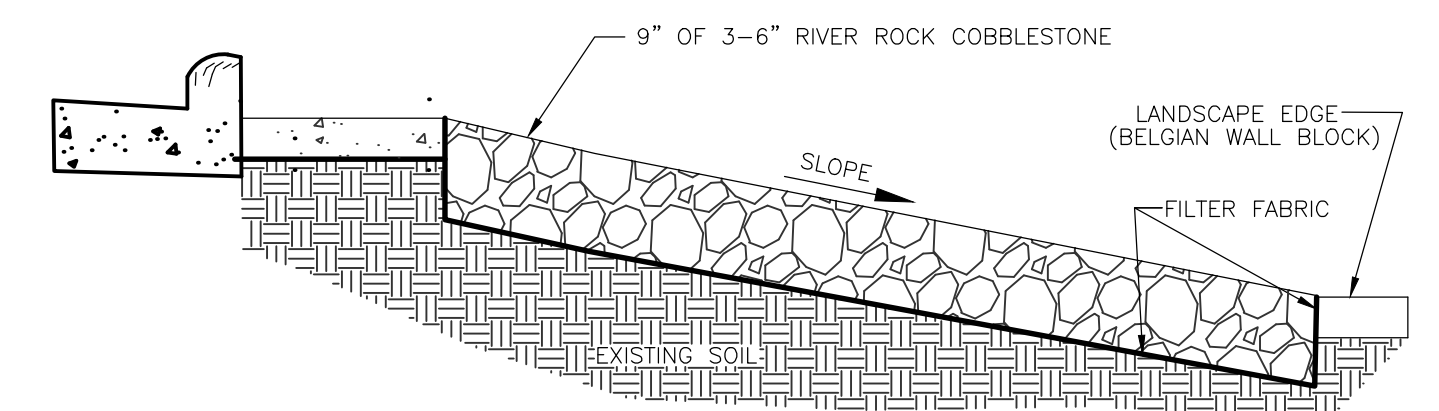


PLAN VIEW

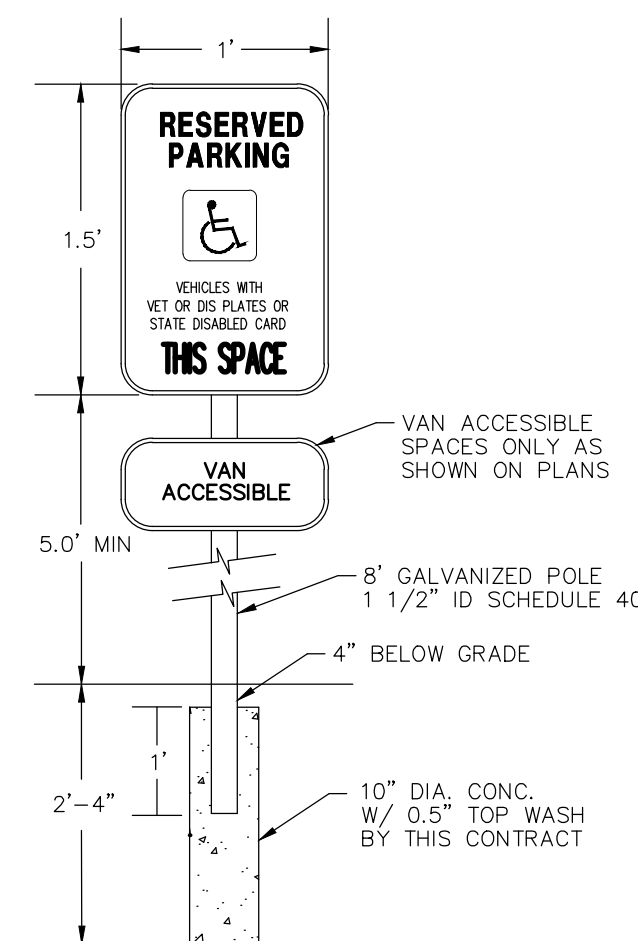


SECTION A-A'

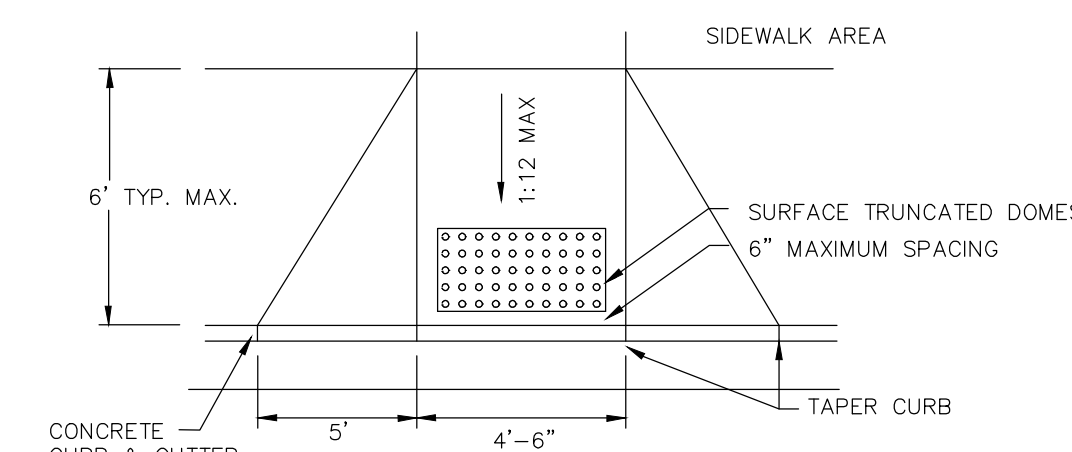
N CURB CUT DETAIL
NO SCALE



O SPLASH PAD SECTION
NO SCALE

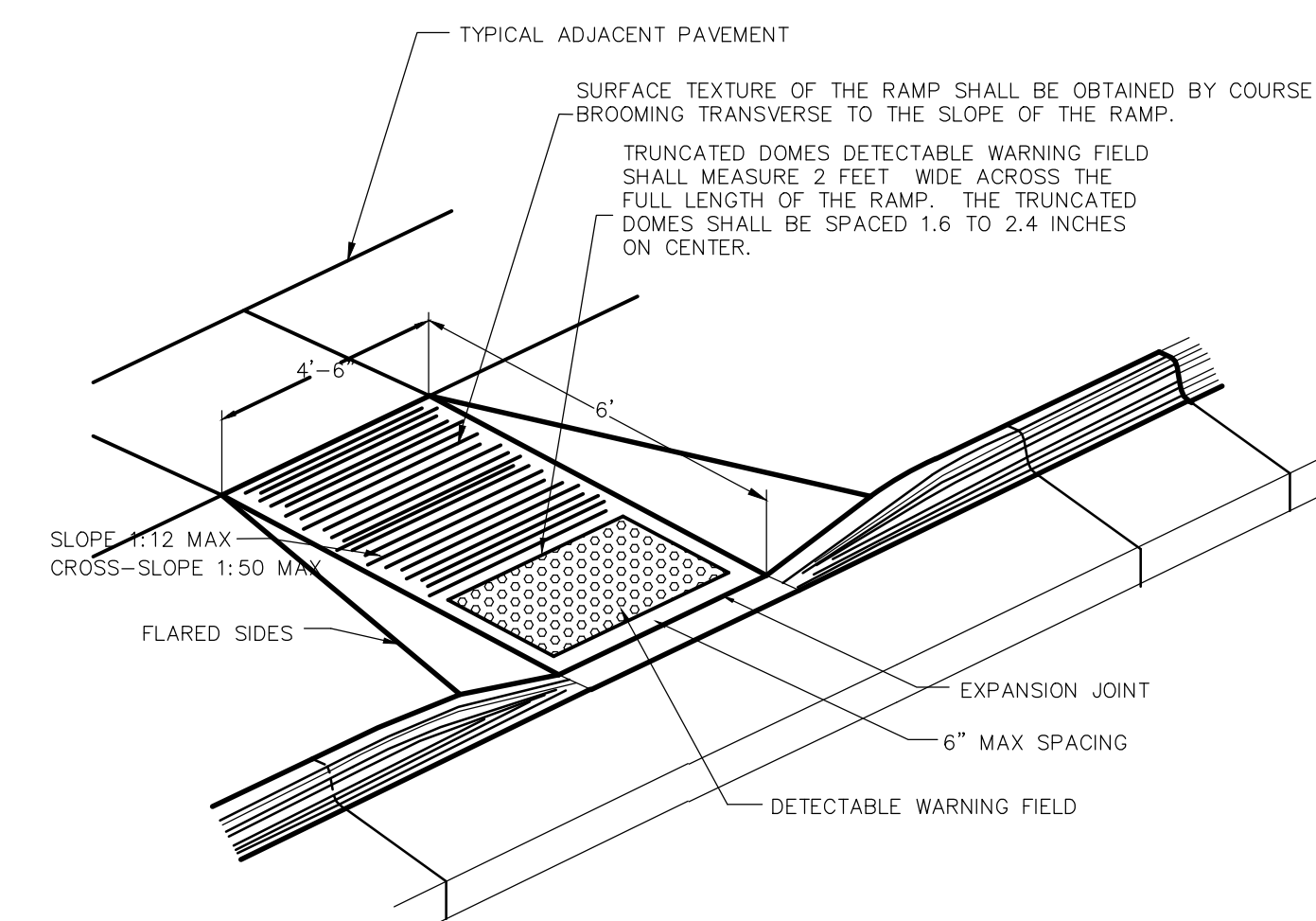


L DISABLED SIGN DETAIL
NO SCALE



NOTES:
• 2'x4' TRUNCATED DOME PANELS SHALL BE CAST IRON
• THE SURFACE TEXTURE OF THE RAMP (EXCLUDING THE TRUNCATED DOME PANEL) SHALL BE A COARSE BROOMED FINISH, TRANSVERSE TO THE SLOPE OF THE RAMP.

M SIDEWALK RAMP DETAIL
NO SCALE



REVISIONS	BY

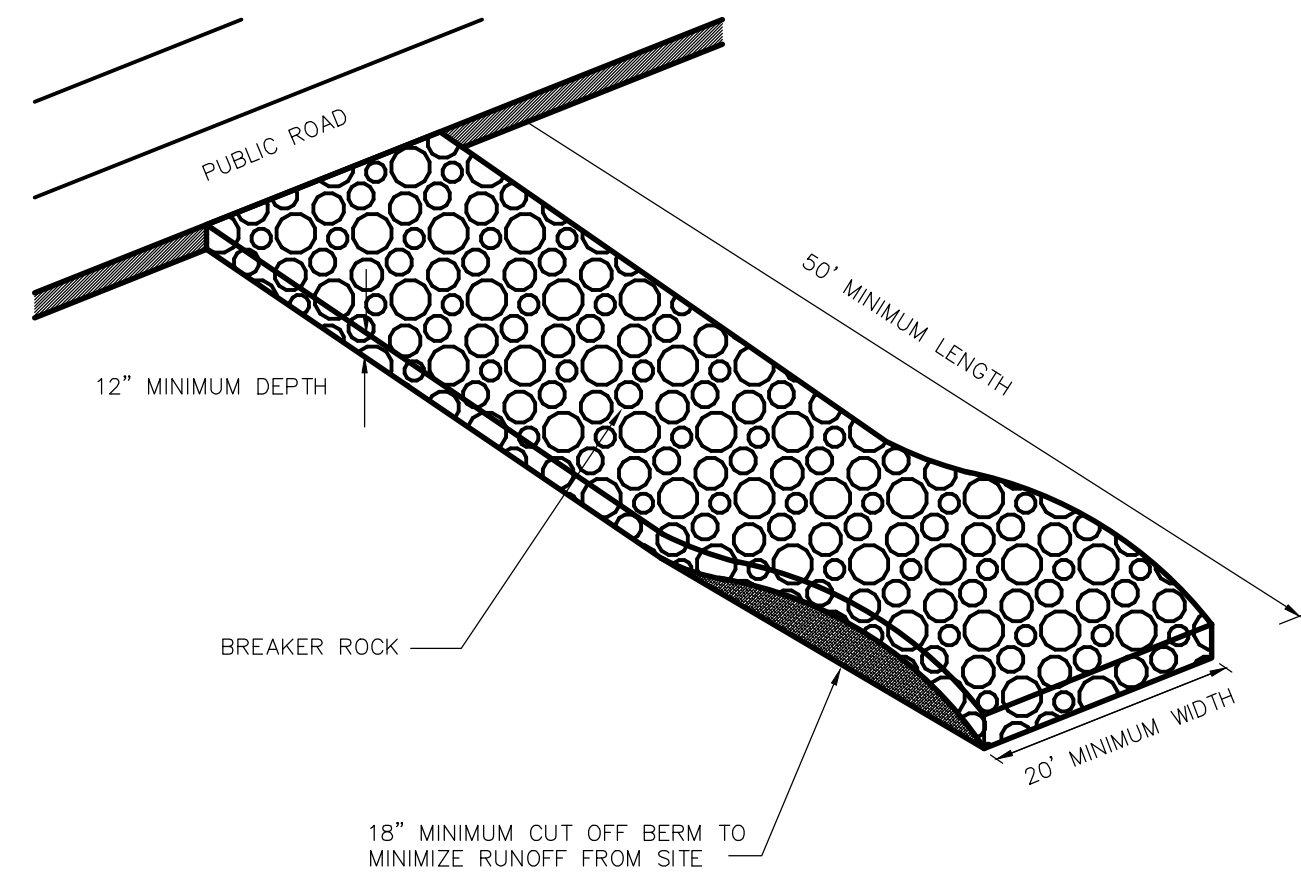
PARAGON ASSOCIATES
Environmental Design & Consulting
CIVIL ENGINEERING · LANDSCAPE ARCHITECTURE · SURVEYING
632 COPELAND AVENUE · LA CROSSE, WI 54603
Tel: 608.781.3110 Fax: 608.781.3197 Paragon-Assoc.biz

PREPARED FOR:
XXXX

WERNER ELECTRIC
3120 BERLIN DRIVE
LA CROSSE, WISCONSIN
DETAILS

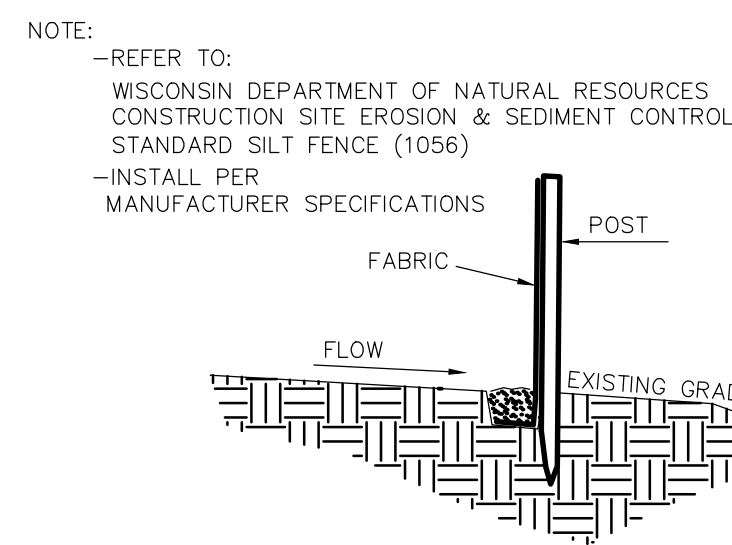
DRAWN	C.G.
PROJECT No	17-027
DATE	09/18/17
SCALE	1"=20'
CAD FILE	17-027 Werner Electric 03
SHEET	

C5

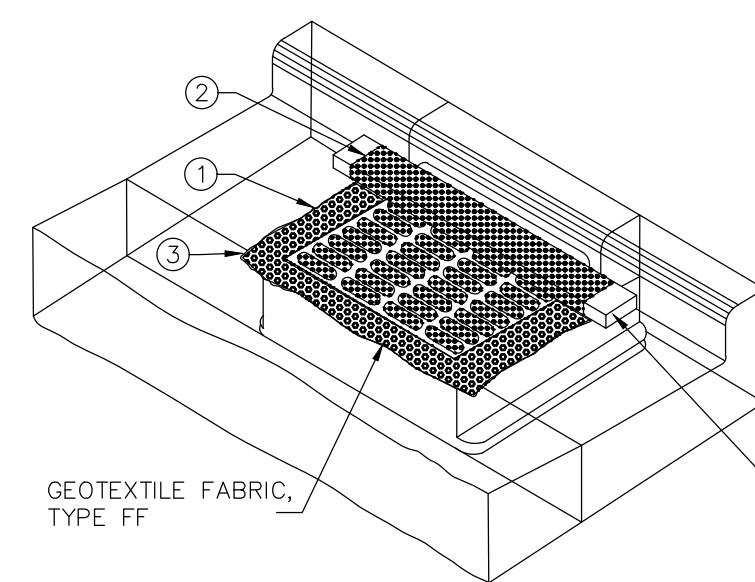


- NOTES:
1. PLACE FILTER FABRIC (PROPEX 2002 OR EQUAL) UNDER BREAKER ROCK TO PREVENT MUD MIGRATION THROUGH ROCK.
 2. ENTRANCE MUST BE MAINTAINED REGULARLY TO PREVENT SEDIMENTATION ON PUBLIC ROADWAYS. FUGITIVE ROCK WILL BE REMOVED FROM ADJACENT ROADWAYS DAILY OR MORE FREQUENTLY AS NECESSARY.

A
C3 **VEHICLE TRACKING CONTROL**
NO SCALE



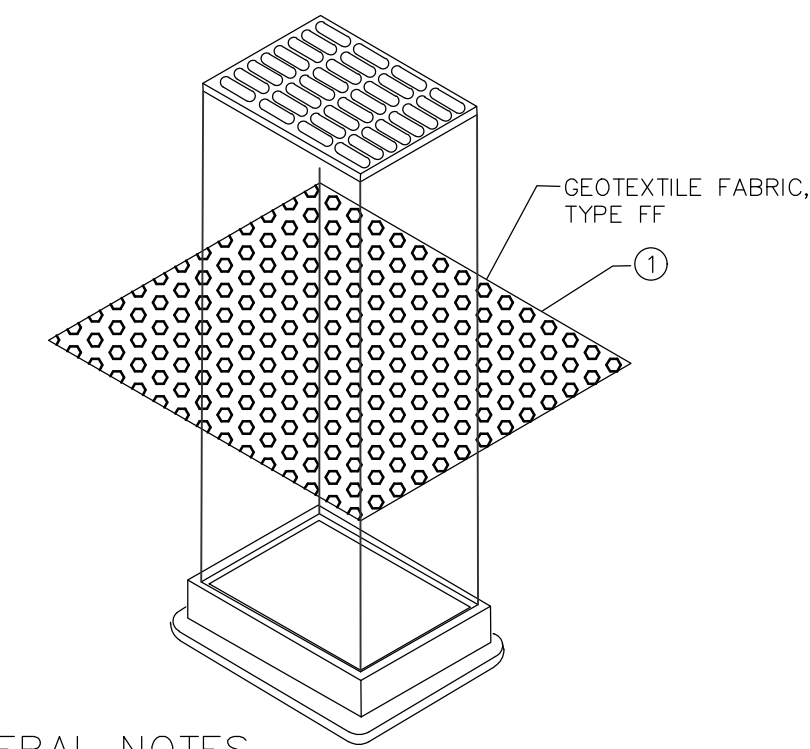
B
C3 **TYPICAL SILT FENCE INSTALLATION**
NO SCALE



GENERAL NOTES

- INLET PROTECTION DEVICES SHALL BE MAINTAINED OR REPLACED AT THE DIRECTION OF THE ENGINEER.
MANUFACTURED ALTERNATIVES APPROVED AND LISTED ON THE WIS. D.O.T.'S EROSION CONTROL PRODUCT ACCEPTABILITY LIST MAY BE SUBSTITUTED.
- WHEN REMOVING OR MAINTAINING INLET PROTECTION, CARE SHALL BE TAKEN SO THAT THE SEDIMENT TRAPPED ON THE GEOTEXTILE FABRIC DOES NOT FALL INTO THE INLET. ANY MATERIAL FALLING INTO THE INLET SHALL BE REMOVED IMMEDIATELY.
1. FINISHED SIZE, INCLUDING FLAP POCKETS WHERE REQUIRED SHALL EXTEND A MINIMUM OF 10" AROUND THE PERIMETER TO FACILITATE MAINTENANCE OR REMOVAL.
 2. FOR INLET PROTECTION, TYPE C (WITH CURB BOX), AN ADDITIONAL 18" OF FABRIC IS WRAPPED AROUND THE WOOD AND SECURED WITH STAPLES. THE WOOD SHALL NOT BLOCK THE ENTIRE HEIGHT OF THE CURB BOX OPENING.
 3. FLAP POCKETS SHALL BE LARGE ENOUGH TO ACCEPT WOOD 2X4.

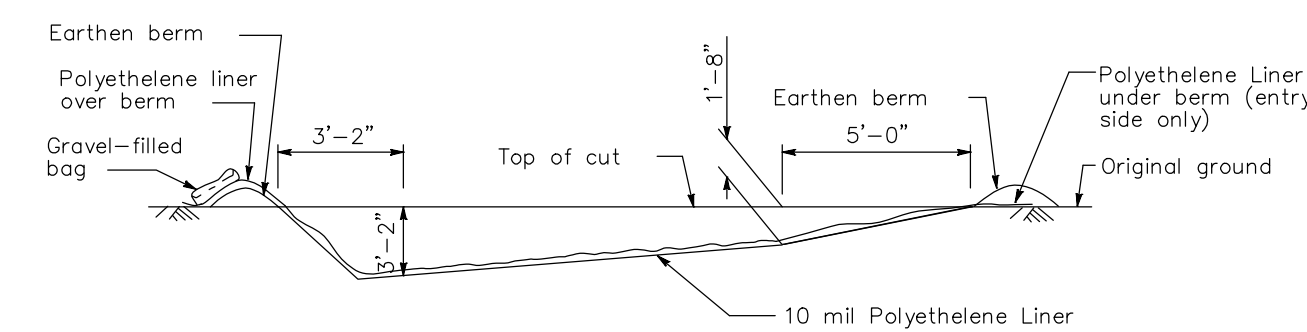
C
C3 **INLET PROTECTION, TYPE C (WITH CURB BOX)**
NO SCALE



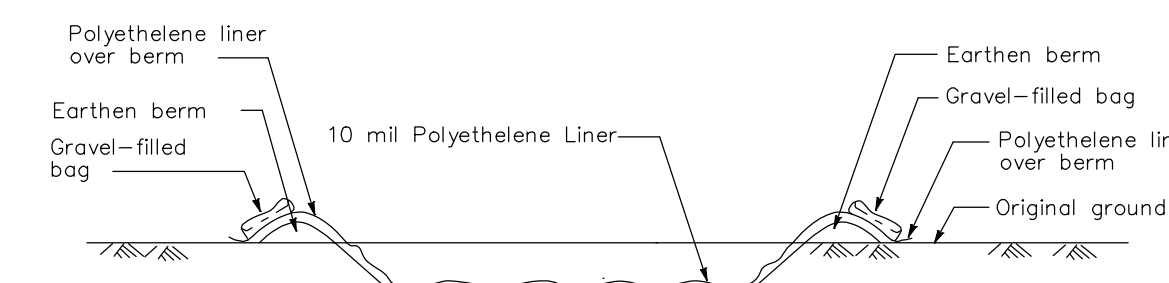
GENERAL NOTES

- INLET PROTECTION DEVICES SHALL BE MAINTAINED OR REPLACED AT THE DIRECTION OF THE ENGINEER.
MANUFACTURED ALTERNATIVES APPROVED AND LISTED ON THE WIS. D.O.T.'S EROSION CONTROL PRODUCT ACCEPTABILITY LIST MAY BE SUBSTITUTED.
- WHEN REMOVING OR MAINTAINING INLET PROTECTION, CARE SHALL BE TAKEN SO THAT THE SEDIMENT TRAPPED ON THE GEOTEXTILE FABRIC DOES NOT FALL INTO THE INLET. ANY MATERIAL FALLING INTO THE INLET SHALL BE REMOVED IMMEDIATELY.
1. FINISHED SIZE, INCLUDING FLAP POCKETS WHERE REQUIRED SHALL EXTEND A MINIMUM OF 10" AROUND THE PERIMETER TO FACILITATE MAINTENANCE OR REMOVAL.

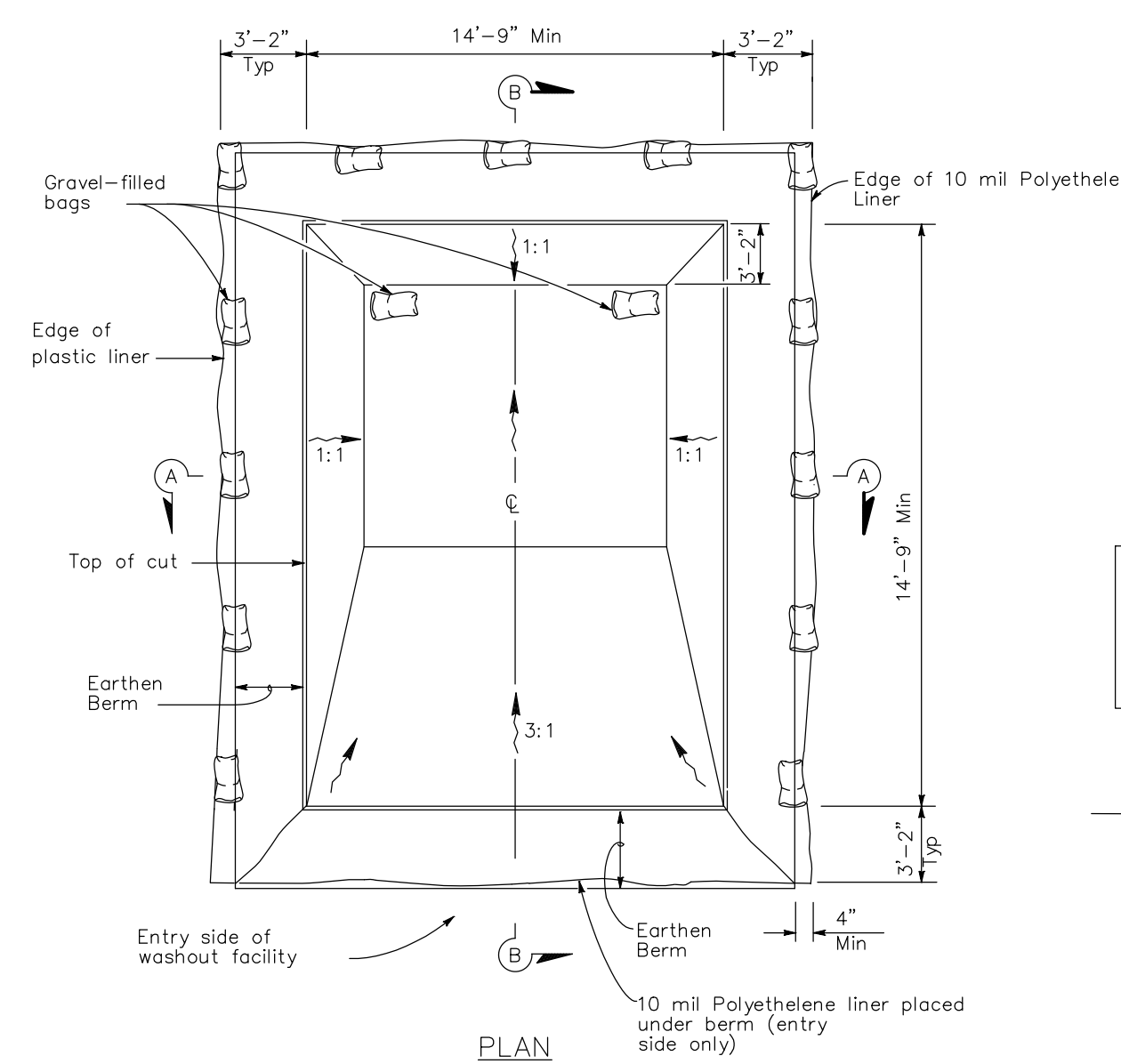
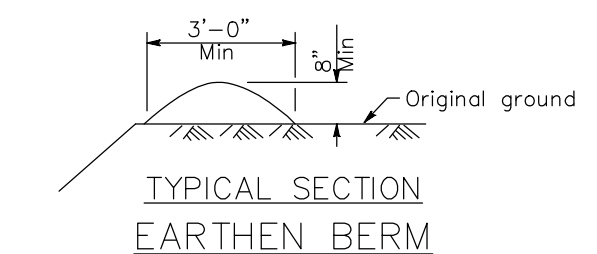
D
C3 **INLET PROTECTION, TYPE B (WITHOUT CURB BOX)**
NO SCALE



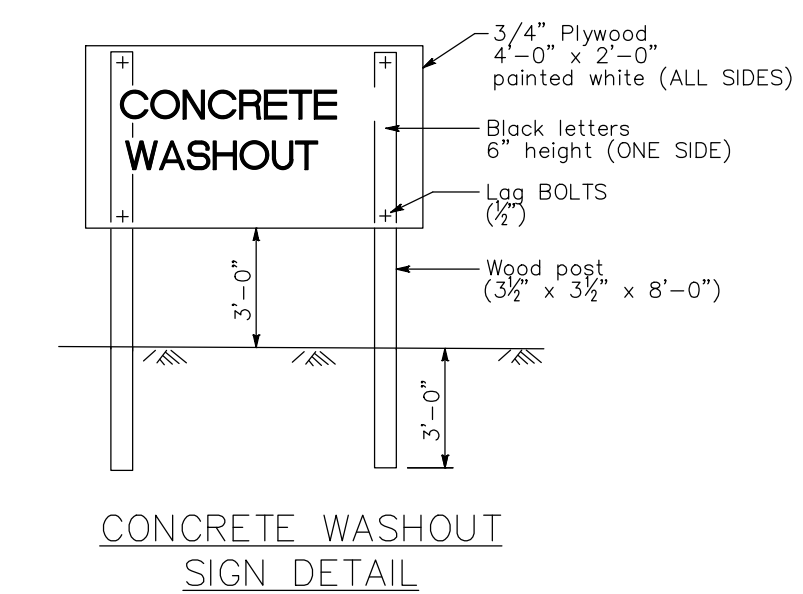
SECTION B-B



SECTION A-A



PLAN



CONCRETE WASHOUT SIGN DETAIL

E
C3 **TEMPORARY CONCRETE WASHOUT FACILITY.**
NO SCALE

REVISIONS	BY

PARAGON ASSOCIATES
Environmental Design & Consulting
Civil Engineering · Landscape Architecture · Surveying
632 COPELAND AVENUE · LA CROSSE, WI 54603
Tel: 608.781.3110 Fax: 608.781.3197 Paragon-Assoc.biz

PREPARED FOR:
XXXX

WERNER ELECTRIC
3120 BERLIN DRIVE
LA CROSSE, WISCONSIN
DETAILS

DRAWN	C.G.
PROJECT No	17-027
DATE	09/18/17
SCALE	1"=20'
CAD FILE	17-027 Werner Electric 03 SHEET

C6



