



**NOTE:**  
- Reflective cones may be used, if setup is daytime only.

**NOTE:**  
- NO PARKING implemented along work area as needed, based on daily work requirements. Local resident access maintained at all times.



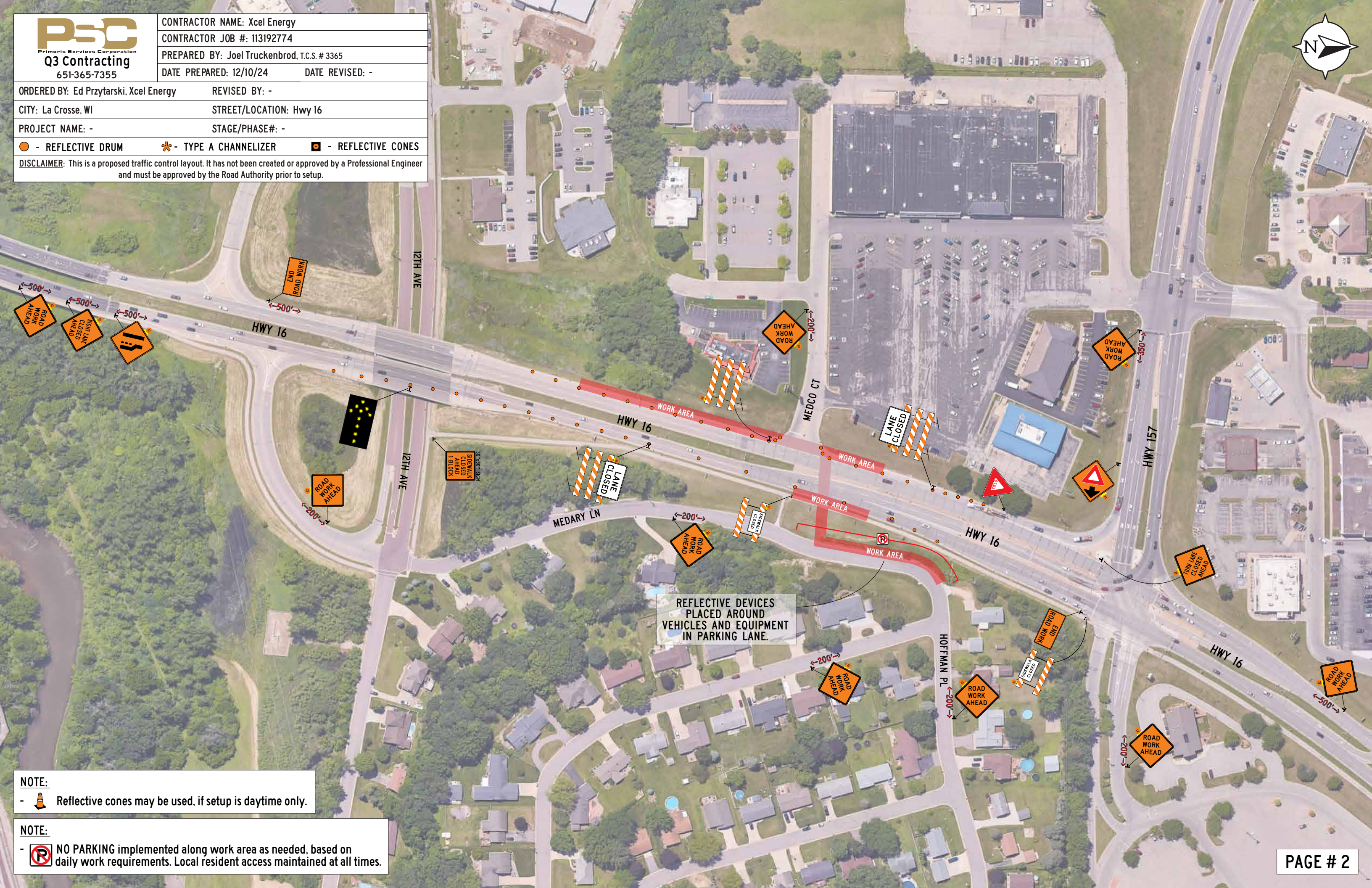
ORDERED BY: Ed Przytarski, Xcel Energy REVISED BY: -

CITY: La Crosse, WI STREET/LOCATION: Hwy 16

PROJECT NAME: - STAGE/PHASE#: -

● - REFLECTIVE DRUM \* - TYPE A CHANNELIZER ◼ - REFLECTIVE CONES

DISCLAIMER: This is a proposed traffic control layout. It has not been created or approved by a Professional Engineer and must be approved by the Road Authority prior to setup.



**NOTE:**  
- Reflective cones may be used, if setup is daytime only.

**NOTE:**  
- NO PARKING implemented along work area as needed, based on daily work requirements. Local resident access maintained at all times.