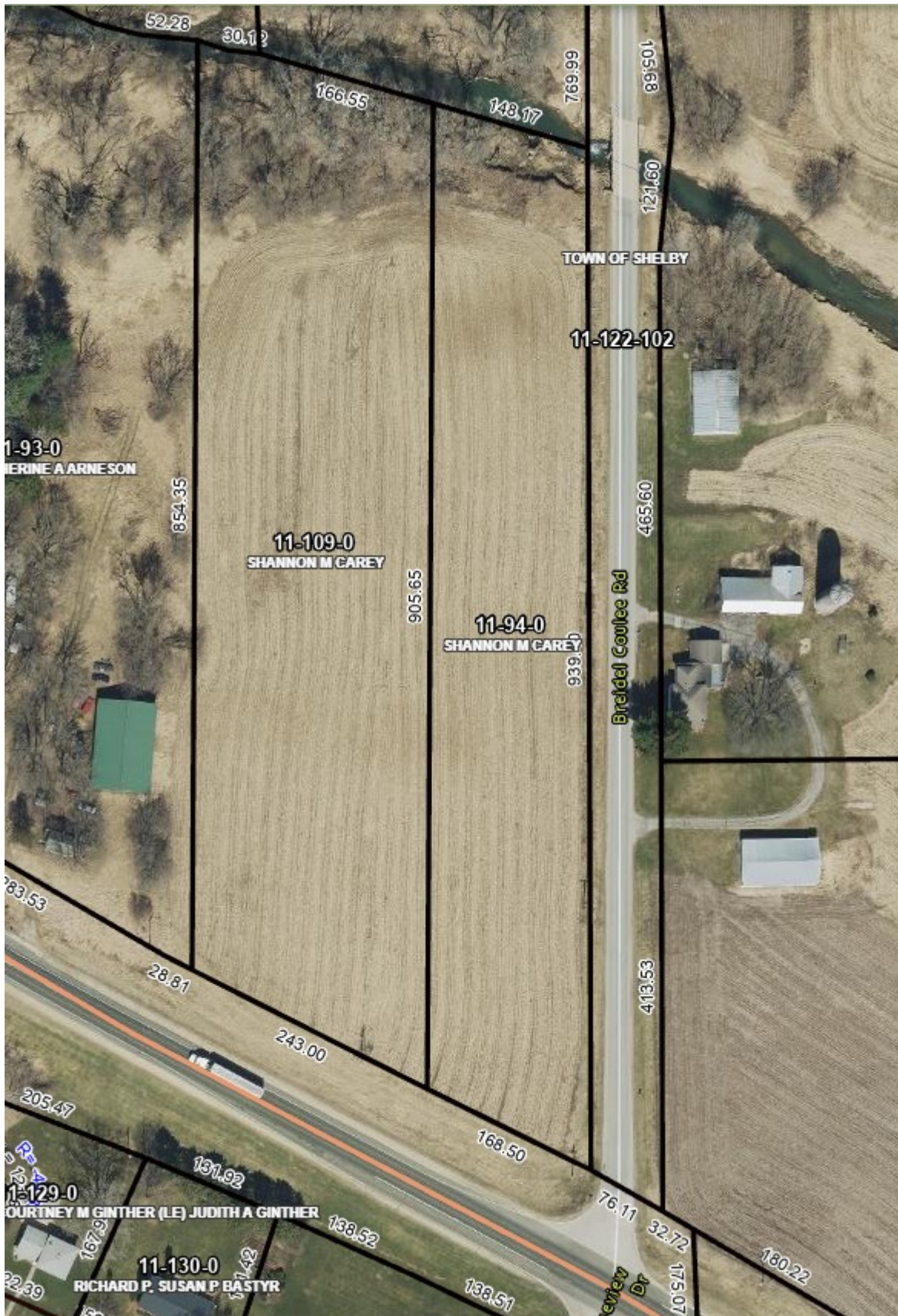


Craig, Sondra

From: Neumann, Shannon
Sent: Thursday, March 21, 2024 3:55 PM
To: Craig, Sondra
Subject: FW: For Review: CSM - Breidel Coulee Rd - 11-109-0
Attachments: Breidel CSM - Revised - 3.21.2024.pdf

I approve.



Take Care,

Shannon L. Neumann | City Assessor
Chief City Assessor
City of La Crosse Assessor's Office

400 La Crosse St. 54601
608-789-7525 Main | 608-789-7544 Office
neumanns@cityoflacrosse.org
www.cityoflacrosse.org

From: Craig, Sondra <craigs@cityoflacrosse.org>
Sent: Thursday, March 21, 2024 3:06 PM
To: Neumann, Shannon <Neumanns@cityoflacrosse.org>
Subject: RE: For Review: CSM - Breidel Coulee Rd - 11-109-0

Shannon,

Attached is a revised CSM for Breidel Coulee Rd. Engineering caught some typos and they've been fixed.

Please let me know if you approve or have comments.

Thank you,

SONDRA CRAIG
Deputy City Clerk
City Clerk's Office
City of La Crosse
400 La Crosse Street
La Crosse WI 54601

craigs@cityoflacrosse.org
Direct: 608.789.7549 | Office: 608.789.7510

From: Craig, Sondra
Sent: Wednesday, March 13, 2024 8:54 AM
To: Acklin, Tim <Acklint@cityoflacrosse.org>; Asp, Brian <aspb@cityoflacrosse.org>; Coman, Kyle <comank@cityoflacrosse.org>; Crandall, Jay <CrandallJ@cityoflacrosse.org>; Erickson, Tina <ericksont@cityoflacrosse.org>; Gallager, Matthew <gallagerm@cityoflacrosse.org>; Holland, Michelle <hollandm@cityoflacrosse.org>; Neumann, Shannon <Neumanns@cityoflacrosse.org>; Reinhart, David <Reinhartd@cityoflacrosse.org>; Trane, Andrea <tranea@cityoflacrosse.org>
Subject: For Review: CSM - Breidel Coulee Rd - 11-109-0

Good morning,

Attached for your review is a CSM for tax parcel 11-109-0 in the Town of Shelby that is within the City's extraterritorial jurisdiction. Please let me know if you approve or have any comments.

Thank you,

SONDRA CRAIG

Deputy City Clerk

City Clerk's Office

City of La Crosse

400 La Crosse Street

La Crosse WI 54601

craigs@cityoflacrosse.org

Direct: 608.789.7549 | Office: 608.789.7510

Visit the City Clerk webpage: <https://www.cityoflacrosse.org/your-government/departments/city-clerk>

City Clerk's Office hours: 8:00 a.m. to 4:30 p.m., Monday through Friday

Public Service hours 8:00 a.m. to 4:00 p.m. Monday through Thursday in the City Hall Lobby