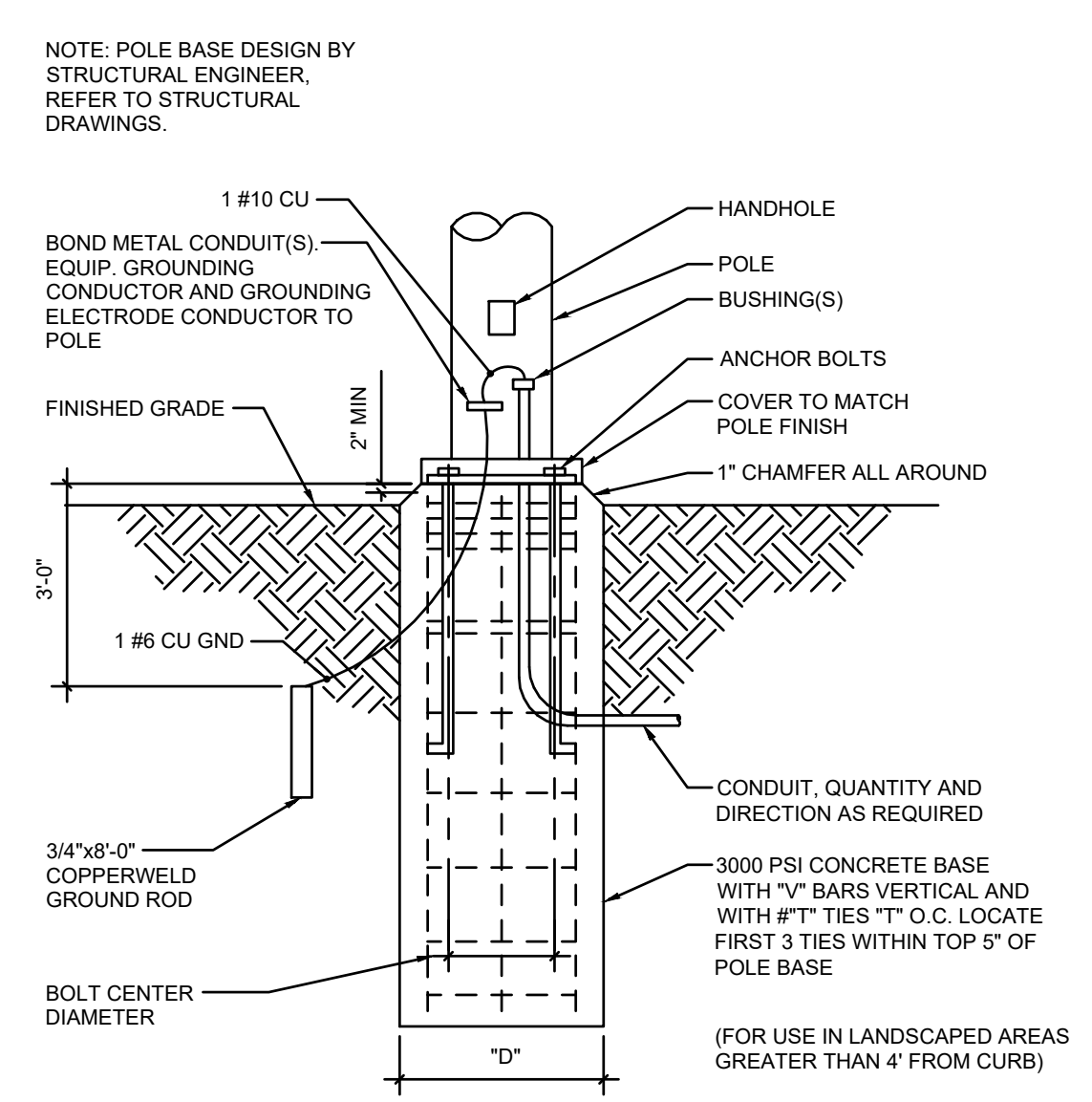
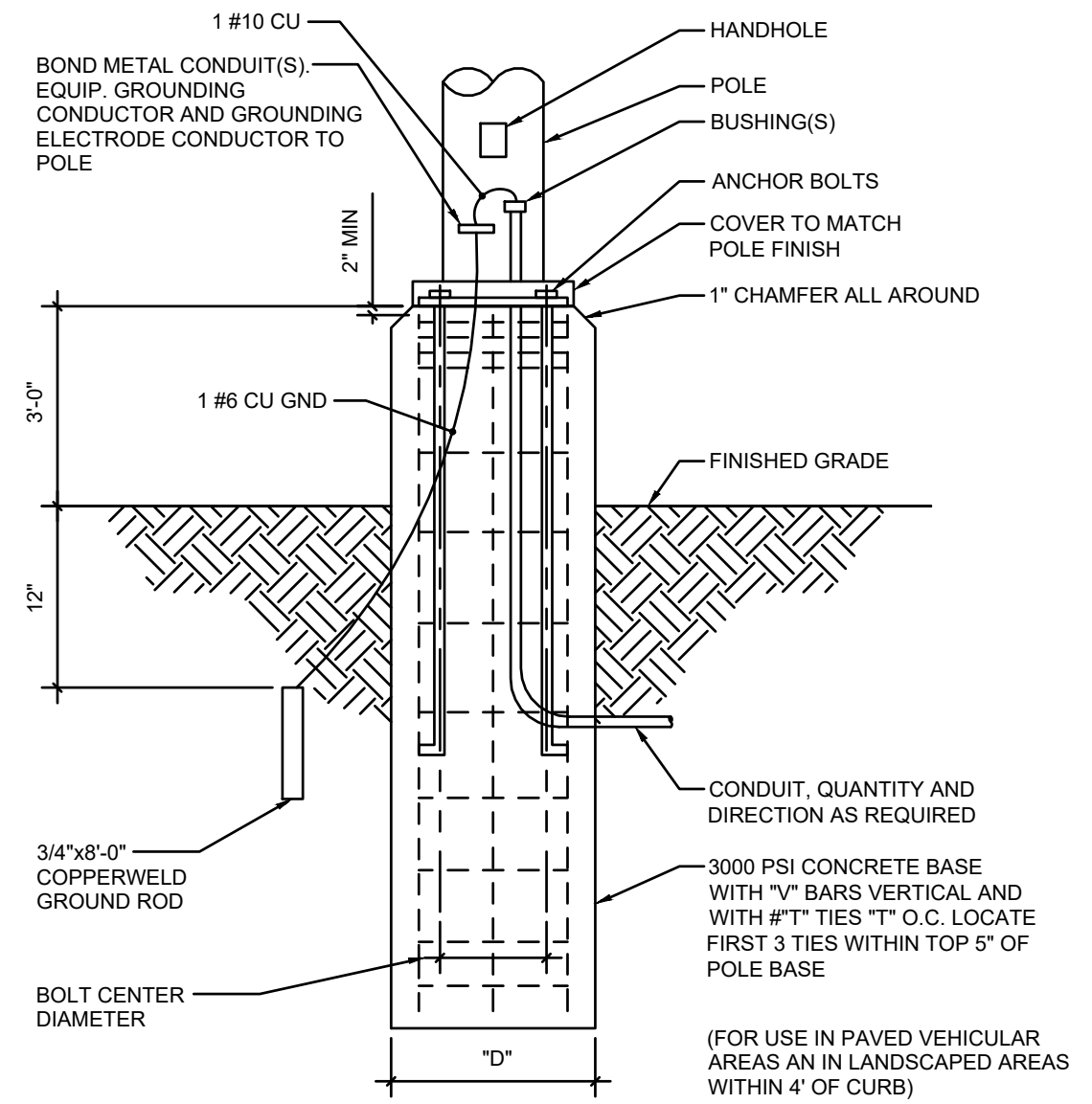
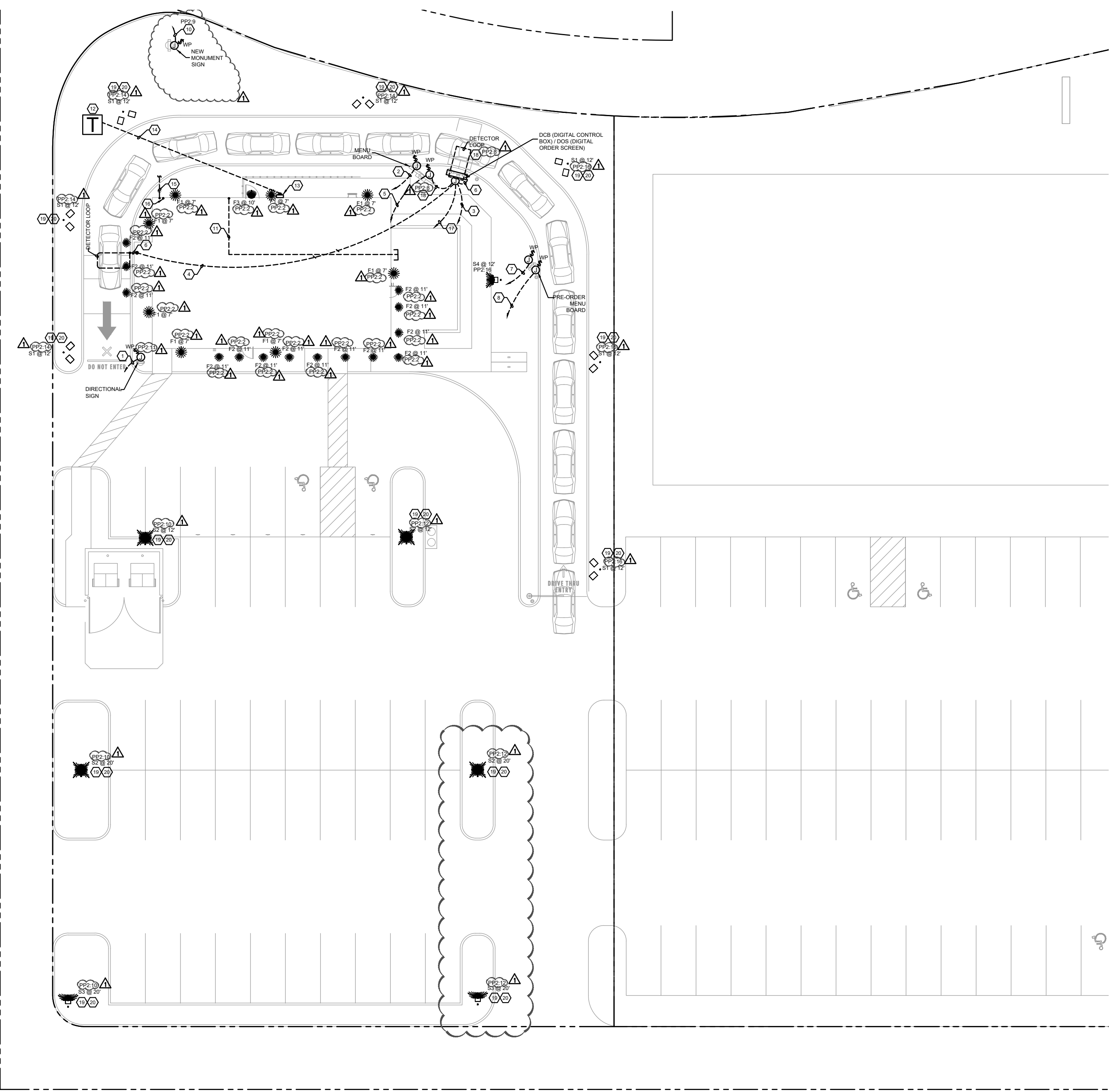


These documents in this form, electronic media, are being provided as your request. The information contained is proprietary in nature and may only be utilized for the stated project. All documents information contained herein including, but not limited to, symbols, blocks, details, etc. may not be reproduced, sold, distributed or utilized in any form on other projects without the express written permission of JTB Architects. Due to the unsecured nature of these documents (electronic media) and the inability of the originator to establish controls over the use thereof, JTB Architects assumes no responsibility for any consequences arising out of the use of the data. It is the sole responsibility of the user to check the reliability of all information contained herein. The user shall refer to the signed and sealed contribution drawings for the project during all phases of the project. The user shall assume all risks and liabilities resulting from the use of the data. By accessing and/or extracting the information from the attached file, the recipient acknowledges and agrees to the above terms regarding the use of the information contained within the attached file.

- LIGHTING NOTES**
1. PROVIDE CROWN ON TOP OF CONCRETE BASE TO COMPLETELY SHED WATER.
 2. 2" (MIN) AIRGAP SPACE BETWEEN TOP OF CONCRETE CROWN AND BOTTOM OF POLE BASE PLATE FOR VENTILATION.
 3. LOCATE LUMINAIRE ON THE DRAWING; AND VERIFY LUMINAIRE CATALOG NUMBER, POSITION OF LAMP SOCKET AND DIRECTION.
 4. PRIOR TO LUMINAIRE INSTALLATION, VERIFY THAT THE LUMINAIRE CATALOG NUMBER MATCHES THE CATALOG NUMBER SHOWN ON THE CIVIL DRAWINGS.
 5. CONTRACTOR SHALL CONFIRM THE MANUFACTURER STANDARD COLOR FOR THE POLE AND FIXTURE WITH THE ARCHITECT.
 6. CONTRACTOR SHALL CONFIRM THE LIGHT POLE BASE BOLT PATTERN/ LAYOUT PRIOR TO INSTALLATION OF THE CONCRETE BASE.



NOTE: POLE BASE DESIGN BY STRUCTURAL ENGINEER. REFER TO STRUCTURAL DRAWINGS.



1 ELECTRICAL SITE PLAN
 1" = 20'-0"
 ELECTRICAL

- GENERAL NOTES**
1. REFER TO GENERAL NOTES ON SHEET E0.0.
 2. REFER TO SPECIFICATIONS ON SHEET E0.1.
 3. UTILITIES ARE NOT INDICATED. PRIOR TO EQUIPMENT AND CONDUIT INSTALLATION, THE CONTRACTOR SHALL COORDINATE EXACT INSTALLATION DETAILS AND MODIFY WORK PLAN ACCORDINGLY TO MEET UTILITY REQUIREMENTS. CORRESPOND WITH UTILITY COMPANY PRIOR TO ANY SITE DEVELOPMENT THAT MAY IMPACT THE INSTALLATION SUCH AS IRRIGATION INSTALLATION, CONCRETE OR ASPHALT INSTALLATION, LANDSCAPING, ETC.
 4. REFER TO PHOTOMETRIC SITE PLAN FOR PARKING LIGHTING FIXTURE SCHEDULE.

- KEY NOTES**
1. PROVIDE (2) #10 THWN, (1) #10 GND IN 1" CONDUIT FOR DIRECTIONAL SIGN AND CONNECT TO CIRCUIT SHOWN VIA TIME CLOCK. DISCONNECT SWITCH SUPPLIED BY MANUFACTURER AND INSTALLED BY ELECTRICIAN. TENANT ELECTRICAL CONTRACTOR TO PROVIDE WIRING AND MAKE FINAL CONNECTION AS REQUIRED. COORDINATE ROUTING OF LANDLORD PROVIDED CONDUIT IN FIELD.
 2. PROVIDE ONE (1) 1" CONDUIT FROM MENU BOARD TO PP1 WITH PULL STRING FOR FUTURE.
 3. PROVIDE ONE (1) 1" CONDUIT FROM DIGITAL ORDER SCREEN TO PP1 WITH PULL STRING. PROVIDE FINAL CONNECTION TO DOS CONTROL BOX AS REQUIRED.
 4. PROVIDE TWO (2) 1" CONDUITS FROM DIGITAL ORDER SCREEN TO DRIVE-THRU WINDOW WITH PULL STRING. ONE CONDUIT FOR SPEAKER, MICROPHONE, DETECTOR LOOP DATA, AND ONE CONDUIT FOR CAMERA DATA. RUN OUTSIDE OF BUILDING FOOTPRINT. TENANT ELECTRICAL CONTRACTOR TO PROVIDE WIRING AND MAKE FINAL CONNECTION AS REQUIRED. VERIFY ALL REQUIREMENTS WITH EQUIPMENT MANUFACTURER PRIOR TO COMMENCING WORK. COORDINATE ROUTING OF LANDLORD PROVIDED CONDUIT IN FIELD.
 5. PROVIDE ONE (1) 1" CONDUIT FROM MENU BOARD TO PP1 WITH PULL STRING. TENANT ELECTRICAL CONTRACTOR TO PROVIDE WIRING AND MAKE FINAL CONNECTION AS REQUIRED. VERIFY ALL REQUIREMENTS WITH EQUIPMENT MANUFACTURER PRIOR TO COMMENCING WORK. COORDINATE ROUTING OF LANDLORD PROVIDED CONDUIT IN FIELD. COORDINATE WITH OWNER AND STARBUCKS REPRESENTATIVE PRIOR TO COMMENCING WORK.
 6. PROVIDE ONE (1) 1" CONDUIT FOR TENANT - FURNISHED DETECTOR LOOP TO OSC / SPEAKER IN COORDINATION WITH TENANT'S REPRESENTATIVE. TENANT ELECTRICAL CONTRACTOR TO PROVIDE WIRING AND MAKE FINAL CONNECTION AS REQUIRED.
 7. PROVIDE ONE (1) 1" CONDUIT FROM PRE-ORDER MENU BOARD TO PP1 WITH PULL STRING. TENANT ELECTRICAL CONTRACTOR TO PROVIDE WIRING AND MAKE FINAL CONNECTION AS REQUIRED. VERIFY ALL REQUIREMENTS WITH EQUIPMENT MANUFACTURER PRIOR TO COMMENCING WORK. COORDINATE ROUTING OF LANDLORD PROVIDED CONDUIT IN FIELD. COORDINATE WITH OWNER AND STARBUCKS REPRESENTATIVE PRIOR TO COMMENCING WORK.
 8. PROVIDE ONE (1) 1" CONDUIT FROM PRE-MENU BOARD TO PP1 WITH PULL STRING FOR FUTURE.
 9. NOT USED.
 10. PROVIDE (2) #10 THWN, (1) #10 GND IN 1" CONDUIT FOR MONUMENT SIGN AND CONNECT TO CIRCUIT SHOWN VIA TIME CLOCK. DISCONNECT SWITCH SUPPLIED BY MANUFACTURER AND INSTALLED BY ELECTRICIAN. TENANT ELECTRICAL CONTRACTOR TO PROVIDE WIRING AND MAKE FINAL CONNECTION AS REQUIRED.
 11. PROVIDE TWO (2) 1" CONDUIT TO PATIO AREA FROM ELECTRICAL PANEL PP1 WITH PULL STRING. CONDUIT SHOWN FOR REFERENCE ONLY.
 12. COORDINATE LOCATION OF UTILITY TRANSFORMER WITH LOCAL UTILITY COMPANY AND CIVIL DRAWINGS. PROVIDE CONCRETE PAD, AND COORDINATE PAD REQUIREMENTS WITH LOCAL UTILITY COMPANY.
 13. APPROXIMATE LOCATION OF METER WITH MAIN DISCONNECT AND CT CABINET. REFER TO SINGLE LINE DIAGRAM ON SHEET E2.0 FOR INFORMATION.
 14. UNDERGROUND SECONDARY ELECTRICAL SERVICE. CONDUIT SHOWN FOR REFERENCE ONLY. COORDINATE WITH CIVIL DRAWINGS AND LOCAL UTILITY COMPANY. SEE SINGLE LINE ON SHEET E2.0 FOR CONDUIT AND CONDUCTOR REQUIREMENTS.
 15. PROVIDE TWO (2) UNDERGROUND CONDUITS WITH PULL STRING FOR TELEPHONE AND INTERNET. PROVIDE LABELED, END-TO-END PULL STRINGS IN ALL CONDUITS FOR FUTURE USE. REFER TO SHEET E1.0 FOR INFORMATION.
 16. PROVIDE (1) SPARE CONDUIT TO BE RUN THROUGH FOUNDATION WALL OUT REAR OF BUILDING. REFER TO SHEET E1.0 FOR ADDITIONAL INFORMATION.
 17. PROVIDE ONE (1) 1" CONDUIT EMBED IN DRIVE THRU LANE FOR VEHICLE DETECTOR LOOP. CENTER CONDUIT ON SPEAKER POST.
 18. LANDLORD TO PROVIDE (2) #10 THWN, (1) #10 GND IN 1" CONDUIT AND CONNECT TO CIRCUIT SHOWN VIA TIME CLOCK FOR POWER TO LED LIGHT ON DOS CANOPY AND MENU BOARD. SEE ARCHITECTURAL SHEETS FOR CONDUIT STUB-UP DETAILS AND ADDITIONAL INFORMATION. LANDLORD TO PROVIDE WIRING AND MAKE FINAL CONNECTION AS REQUIRED.
 19. PROVIDE 2#10 AWG + 1# 10AWG GND IN 1" CONDUIT AND CONNECT TO CIRCUIT SHOWN. CIRCUIT SHALL BE ROUTED THROUGHT TIMECLOCK AND PHOTOCELL FOR CONTROL. SEE DETAIL ON THIS SHEET TO PROVIDE COPPER GROUND ROD AND USE # 6 GROUND CONDUCTOR FROM GROUND ROD TO POLE BASE.
 20. PROVIDE INLINE FUSE HOLDER FUSED TO MEET BALLAST/DRIVER REQUIREMENTS. INLINE FUSE HOLDER SHALL BE RATED FOR 600VAC, 200KA AND SHALL BE UL LISTED TO MEET BREAKAWAY AND SUBMERSIBILITY REQUIREMENTS.
 21. PROVIDE 2#8 AWG + 1# 10AWG GND IN 1" CONDUIT AND CONNECT TO CIRCUIT SHOWN. CIRCUIT SHALL BE ROUTED THROUGHT TIMECLOCK AND PHOTOCELL FOR CONTROL. SEE DETAIL ON THIS SHEET TO PROVIDE COPPER GROUND ROD AND USE # 6 GROUND CONDUCTOR FROM GROUND ROD TO POLE BASE.

- SITE INTERNET & VOICE SYSTEM NOTES**
1. LANDLORD INITIATED CONNECTIVITY: TELECOMMUNICATION SERVICES WILL BE ORDERED BY STARBUCKS FOR THE SPACE LEASED HOWEVER TO PROVIDE STARBUCKS WITH POINT OF FEED EXHIBITS AND LANDLORD TO COORDINATE INITIAL INSTALLATION OF COMMUNICATION INFRASTRUCTURE WITH LOCAL TELCO OR BROADBAND PROVIDER, INCLUDING THE TERMINATION OF ONT (OPTICAL NETWORK TERMINATION) FIBER AND/OR BROADBAND NODE AT THE MINIMUM POINT OF ENTRY. LANDLORD TO PROVIDE ELECTRICAL CONNECTIVITY FOR POTENTIAL LEC (LOCAL EXCHANGE CARRIER) FIBER NODE OR BROADBAND ROUTER AS WELL AS A BACKBOARD PER LOCAL SPECIFICATION FOR SERVICE TERMINATION AND DEMARCATION POINT PLACEMENT. STARBUCKS WILL REQUIRE AT LEAST FIBER OR BROADBAND SERVICES WITH MINIMUM SPEEDS OF 50X10 MBPS. IN EXCEPTIONAL SITUATIONS, STARBUCKS MIGHT NEED ACCESS TO MOUNT ROOF ANTENNAS.

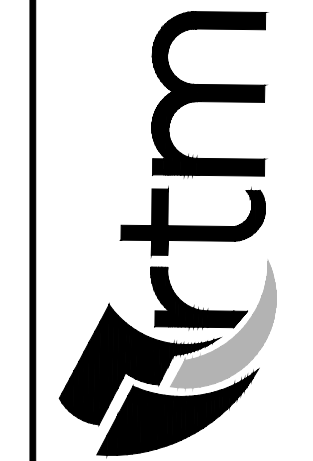
DATE	SUBMITTED FOR
10/3/23	TENANT REVIEW
05/08/24	TENANT COMMENTS

SHEET TITLE
ELECTRICAL SITE PLAN

DRAWN BY:
AB/MM
JOB NO.
3140.a
SHEET

ES1.0

GMX REAL ESTATE GROUP, LLC
 NEW CONSTRUCTION
 3900 STATE HWY 16 - LOT 2, LA CROSSE, WI 54601



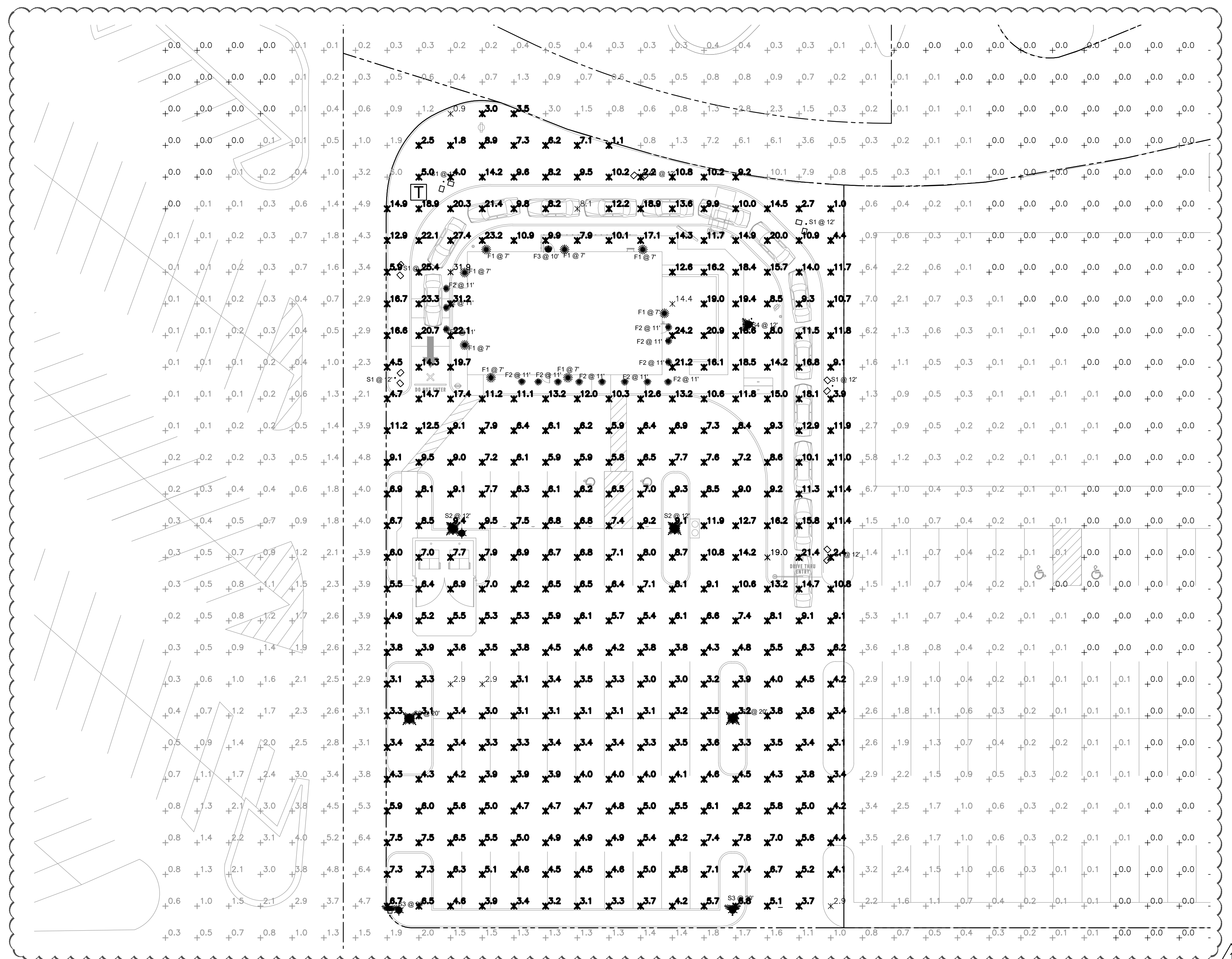
engineering consultants
 850 E. Algonquin Road, Suite 250, Schaumburg, IL 60173
 rtmc.com | 847.756.4180

These documents in this form, electronic media, are being provided as your request. The information contained is proprietary to the architect and may not be reproduced, distributed or utilized in any form on other projects without the express written permission of JTB Architects. Due to the unsecured nature of these documents, electronic media and the inability of the recipient to establish controls over the use thereof, JTB Architects assumes no responsibility for any consequences arising out of the use of the data. It is the sole responsibility of the user to check the reliability of all information contained herein. The user shall at all times refer to the signed and sealed construction drawings for the project during all phases of the project. The user shall assume all risks and liabilities resulting from the use of this data. By accessing and/or extracting the information from the attached file, the recipient acknowledges and agrees to the above terms regarding the use of the information contained within the attached file.

Symbol	Label	Quantity	Manufacturer	Catalog Number	Description	Lamp	Number Lamps	Filename	Lumens Per Lamp	Light Loss Factor	Wattage
	S1	7	Lithonia Lighting	DSX2 LED P1 35K 80CRI BLC4	D-Series Size 2 Area Luminaire P1 Performance Package 3500K CCT 80 CRI Type 4 Extreme Backlight Control		1	DSX2 LED P1 35K 80CRI BLC4.ies	13164	0.95	269
	S2	4	Lithonia Lighting	DSX2 LED P3 35K 80CRI T5W	D-Series Size 2 Area Luminaire P3 Performance Package 3500K CCT 80 CRI Type 5 Wide		1	DSX2 LED P3 35K 80CRI T5W.ies	28085	0.95	219.4
	S3	2	Lithonia Lighting	DSX2 LED P3 35K 80CRI T3M HS	D-Series Size 2 Area Luminaire P3 Performance Package 3500K CCT 80 CRI Type 3 Medium Housingside Shield		1	DSX2 LED P3 35K 80CRI T3M HS.ies	22942	0.95	219.4011
	S4	1	Lithonia Lighting	DSX2 LED P2 35K 80CRI BLC4	D-Series Size 2 Area Luminaire P2 Performance Package 3500K CCT 80 CRI Type 4 Extreme Backlight Control		1	DSX2 LED P2 35K 80CRI BLC4.ies	16843	0.95	179.22
	F1	8	KICHLER	258377-1 MOD#11251/CP133537	LED WALL CYLINDER	LED	1	11251-photometric-report.ies	574	0.95	14.7
	F2	14	Indy	L4 28LM 27K MVOLT G4 90CRI 2T WD CSS	INDY 4" DIA. 1-LED 4000LM, 90CRI, GEN4 DOUBLE WALL WASH WITH CLEAR SEMI-SPECULAR (CSS) PARABOLIC REFLECTOR, DIFFUSE KICKERS AND FROSTED CONVEX GLASS LENS		1	L4 28LM 27K MVOLT G4 90CRI 2T WD CSS.ies	1590	0.95	28.46
	F3	1	Lithonia Lighting	WDGE1 LED P1 30K 90CRI VW	WDGE1 LED WITH P1 PERFORMANCE PACKAGE, 3000K, 90CRI, VISUAL COMFORT WIDE OPTIC		1	WDGE1_LED_P1_30_K_90CRI_VW.ies	1030	0.95	10.0002

SITE AREA STATISTICS (WITH LLF=0.90)					
Description	Avg	Max	Min	Max/Min	Avg/Min
STARBUCKS	8.1c	34.3fc	0.9fc	38.1:1	9.0:1
DRIVE THRU ENTRY	15.6fc	32.4fc	7.7fc	4.2:1	2.0:1
DRIVE THRU WINDOW	28.1fc	31.2fc	25.0fc	1.2:1	1.1:1
BLDG ENTRY 1	22.8fc	24.2fc	21.3fc	1.1:1	1.1:1
BLDG ENTRY 2	20.2fc	20.8fc	19.6fc	1.1:1	1.0:1
PATIO	18.8fc	24.2fc	11.2fc	2.2:1	1.7:1
PARKING & SIDEWALKS	5.9fc	19.0fc	1.9fc	10.0:1	3.1:1
SERVICE DOOR	9.9fc	9.9fc	9.9fc	1.0:1	1.0:1

- ### GENERAL NOTES
- ALL EXTERIOR LIGHTING, WHETHER FREE-STANDING OR MOUNTED ON A STRUCTURE, SHALL BE FULL-CUTOFF.
 - THE TOWNSHIP RESERVES THE RIGHT TO CONDUCT A POST-INSTALLATION NIGHT TIME INSPECTION TO VERIFY COMPLIANCE WITH TOWNSHIP LIGHTING STANDARDS. IF SAID INSPECTION REVEALS A VIOLATION OF SAID STANDARDS, THE TOWNSHIP SHALL DIRECT CORRECTIVE ACTION, WHICH SHALL BE EXECUTED BY THE PROPERTY OWNER AT NO EXPENSE TO THE TOWNSHIP.
 - POST-APPROVAL ALTERATIONS TO LIGHTING PLANS OR SUBSTITUTIONS FOR APPROVED LIGHTING EQUIPMENT SHALL BE SUBMITTED TO THE TOWNSHIP FOR REVIEW AND APPROVAL PRIOR TO CONSTRUCTION OR INSTALLATION.
 - LIGHTING SHALL BE CONTROLLED BY TIME CLOCK / PHOTOCELL THAT TURN OFF LIGHTS ONE HOUR AFTER CLOSE OF BUSINESS (10 P.M.)
 - CALCULATIONS ARE BASED ON FIXTURE TYPE SCHEDULED. IF FIXTURE OTHER THAN THOSE SPECIFIED IS PROVIDED THE MANUFACTURER SHALL PROVIDE A DETAILED POINT BY POINT CALCULATION TO VERIFY COMPLIANCE WITH LOCAL STREET LIGHTING GUIDELINES.



1 ELECTRICAL SITE PLAN
1" = 20'-0"
ELECTRICAL

GMX REAL ESTATE GROUP, LLC
NEW CONSTRUCTION
3900 STATE HWY 16 - LOT 2, LA CROSSE, WI 54601

DATE	SUBMITTED FOR
10/3/23	TENANT REVIEW
SHEET TITLE	PHOTOMETRIC SITE PLAN
DRAWN BY:	AB/MM
JOB NO.	3140.a
SHEET	ES1.1

rtm engineering consultants
850 E. Algonquin Road, Suite 250, Schaumburg, IL 60173
rtm.com | 847.756.4180