

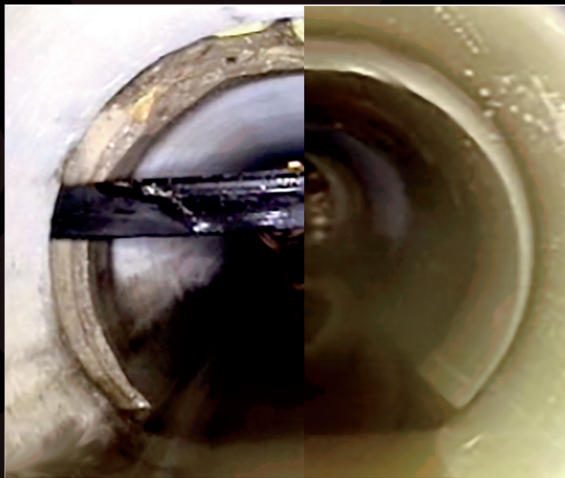


# **EMPIRE**

## **PIPE SERVICES**

### **POINT REPAIRS BONDS & FORMS**

**TO EXISTING PIPE STOPPING ANY  
FUTURE INFILTRATION, ROOT  
BLOCKAGE OR SINK HOLES  
CAUSED BY BROKEN PIPE  
OR ABANDONED SERVICES**



**EMPIRE PIPE SERVICES OFFERS A "NO DIG"  
TRENCHLESS PIPE REHABILITATION SOLUTION FOR  
PIPE DIAMETERS 6" UP TO 72". EPS UTILIZES  
THE LEADING TRENCHLESS TECHNOLOGIES FOR  
THE REHABILITATION INDUSTRY THROUGHOUT THE  
HE UNITED STATES. AN ALTERNATIVE TO "DIG  
AND REPLACE" METHODS, TRENCHLESS POINT  
REPAIRS CHALLENGES TRADITIONAL PIPE REPAIR  
METHODS AS A 'TRENCHLESS REPAIR' THAT IS AN  
EFFICIENT, LONG-LASTING SOLUTION WITH THE  
ABILITY TO REPAIR MULTIPLE LOCATIONS IN AS  
LITTLE AS ONE DAY.**

# **POINT REPAIRS**

EMPIRE PIPE SERVICES UTILIZES A CURED-IN-PLACE-PIPE (CIPP) PROCESS. THIS ELIMINATES THE NEED FOR COSTLY DIGGING BY CREATING A PIPE WITHIN A PIPE WITH MINIMAL CHANGE TO THE ORIGINAL DIAMETER. THROUGH THIS PROCESS, NOT ONLY DOES OUR TRENCHLESS TECHNOLOGY CURE THE INFILTRATION, IT ALSO IMPROVES THE PERFORMANCE OF THE STORM OR SANITARY SEWER SYSTEM.



Pipe Missing & Broken



## THE EPS POINT REPAIR SYSTEM:

- EXCEEDS THE CIPP SPECIFICATION ASTM F1216
- HAS A 50-YEAR MINIMUM SERVICE LIFE
- BONDS TO EXISTING PIPE CREATING A PIPE WITHIN A PIPE
- IS A PERMANENT SOLUTION FOR INFILTRATION.
- STOPS ROOT INTRUSION AND FUTURE GROWTH.
- REDUCES COSTS & PUBLIC IMPACT

CONTACT US TODAY TO ENSURE THAT THE PIPE IS REHABILITATED AND PERFORMING EXCEPTIONALLY FOR YEARS TO COME.

[www.EMPIRE-PIPE.com](http://www.EMPIRE-PIPE.com)  
(507) 388-2895

