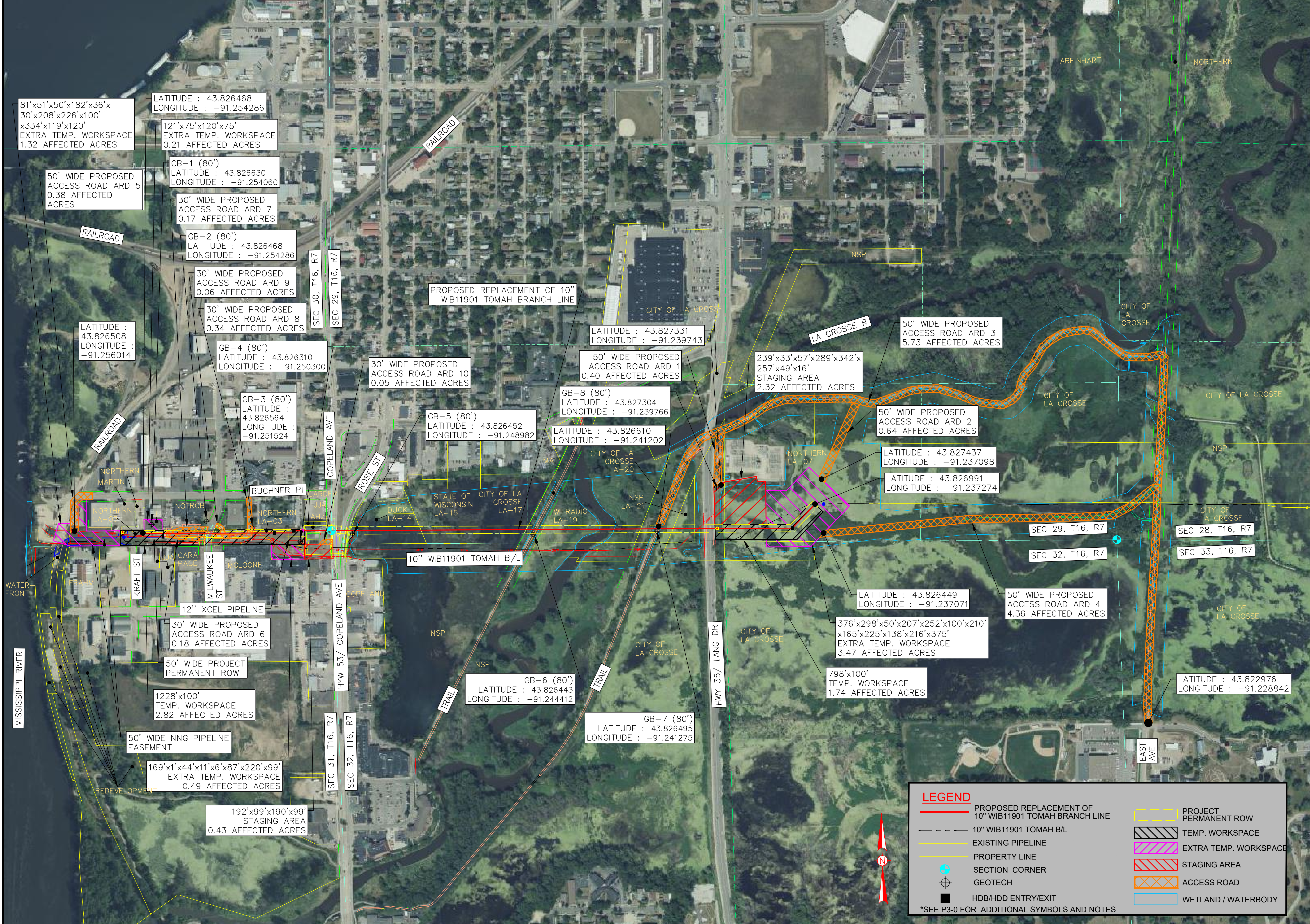


C:\USERS\LESLIE.LEVAE\COMMAPPING - NNG - ABANDONMENT 2026\1_CAD\11_EXHIBITS\OVERVIEW MAP (TOMAH IFB REV2).DWG



81'x51'x50'x182'x36'x
30'x208'x226'x100'
x334'x119'x120'
EXTRA TEMP. WORKSPACE
1.32 AFFECTED ACRES

LATITUDE : 43.826468
LONGITUDE : -91.254286

121'x75'x120'x75'
EXTRA TEMP. WORKSPACE
0.21 AFFECTED ACRES

50' WIDE PROPOSED
ACCESS ROAD ARD 5
0.38 AFFECTED
ACRES

GB-1 (80')
LATITUDE : 43.826630
LONGITUDE : -91.254060

30' WIDE PROPOSED
ACCESS ROAD ARD 7
0.17 AFFECTED ACRES

GB-2 (80')
LATITUDE : 43.826468
LONGITUDE : -91.254286

30' WIDE PROPOSED
ACCESS ROAD ARD 9
0.06 AFFECTED ACRES

30' WIDE PROPOSED
ACCESS ROAD ARD 8
0.34 AFFECTED ACRES

GB-4 (80')
LATITUDE : 43.826310
LONGITUDE : -91.250300

GB-3 (80')
LATITUDE : 43.826564
LONGITUDE : -91.251524

30' WIDE PROPOSED
ACCESS ROAD ARD 10
0.05 AFFECTED ACRES

GB-5 (80')
LATITUDE : 43.826452
LONGITUDE : -91.248982

50' WIDE PROPOSED
ACCESS ROAD ARD 1
0.40 AFFECTED ACRES

GB-8 (80')
LATITUDE : 43.827304
LONGITUDE : -91.239766

LATITUDE : 43.826610
LONGITUDE : -91.241202

50' WIDE PROPOSED
ACCESS ROAD ARD 3
5.73 AFFECTED ACRES

50' WIDE PROPOSED
ACCESS ROAD ARD 2
0.64 AFFECTED ACRES

LATITUDE : 43.827437
LONGITUDE : -91.237098

LATITUDE : 43.826991
LONGITUDE : -91.237274

30' WIDE PROPOSED
ACCESS ROAD ARD 6
0.18 AFFECTED ACRES

50' WIDE PROJECT
PERMANENT ROW

1228'x100'
TEMP. WORKSPACE
2.82 AFFECTED ACRES

50' WIDE NNG PIPELINE
EASEMENT

169'x1'x44'x11'x6'x87'x220'x99'
EXTRA TEMP. WORKSPACE
0.49 AFFECTED ACRES

192'x99'x190'x99'
STAGING AREA
0.43 AFFECTED ACRES

GB-6 (80')
LATITUDE : 43.826443
LONGITUDE : -91.244412

GB-7 (80')
LATITUDE : 43.826495
LONGITUDE : -91.241275

376'x298'x50'x207'x252'x100'x210'
x165'x225'x138'x216'x375'
EXTRA TEMP. WORKSPACE
3.47 AFFECTED ACRES

798'x100'
TEMP. WORKSPACE
1.74 AFFECTED ACRES

LATITUDE : 43.822976
LONGITUDE : -91.228842

LEGEND	
	PROPOSED REPLACEMENT OF 10" WIB11901 TOMAH BRANCH LINE
	10" WIB11901 TOMAH B/L
	EXISTING PIPELINE
	PROPERTY LINE
	SECTION CORNER
	GEOTECH
	HDB/HDD ENTRY/EXIT
	PROJECT PERMANENT ROW
	TEMP. WORKSPACE
	EXTRA TEMP. WORKSPACE
	STAGING AREA
	ACCESS ROAD
	WETLAND / WATERBODY

*SEE P3-0 FOR ADDITIONAL SYMBOLS AND NOTES

DISCLAIMER: PARCEL DATA DISPLAYED ON MAP IS UNVERIFIED AND HAS NOT BEEN SURVEYED. FOR REFERENCE ONLY

ISSUED FOR CONSTRUCTION
Sheet Aerial Overview
Date: 04/17/26
Scale: 1"=300'

WIB11901 - 10" REPLACEMENT MP 1.1-1.7 TOMAH BL
CAPGTR100010839
PROJECT LOCATION AERIAL OVERVIEW
SEC. 28, 29 & 30, T16N, R7W
LA CROSSE COUNTY, WISCONSIN



INTERNAL INFORMATION
DISTRIBUTION/COPIES
LIMITED TO
PROJECT NEEDS