



Unlocking Potential
FOR CHILDREN WITH
DEVELOPMENTAL DISABILITIES

Since 1973

1825 Victory Street • La Crosse, WI 54601 • 608-782-6480 • Fax: 608-782-6481 • www.chileda.org

City of La Crosse
City Plan Commission

July 20, 2014

Chileda Institute is a Residential Care Center located on the south side of La Crosse. Our residential program cares for nearly 40 children with significant cognitive and behavioral needs in a home and school environment.

Although our campus is a reflection of efficient use of space, including home, educational and recreational spaces, we have identified a need. We need for an outdoor gathering area for parents who come to Chileda to visit with their children. Many of our children have such significant behavioral needs that parents do not take them off campus, but visit on campus. With limited outdoor areas and the requirements of confidentiality under HIPAA, a small 33'x43' area was identified in which we could put swinging benches and picnic tables for families to have private visits. The area requires fencing as our students do not have the ability to reliably remain in the area simply by asking them to. Although most are teenagers, cognitively they may be on a preschool level and may quickly run into hazardous areas, such as the parking lot or street, without considering the danger. Even with visual and verbal prompts, fencing is necessary to provide for their safety.

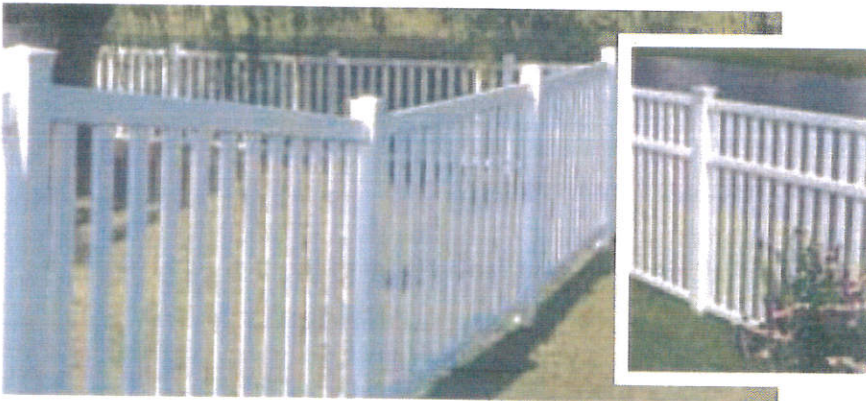
The fence will be tan in color to match the building.

Thank you for your consideration of this important family play space.

Sincerely,

Ruth M. Wiseman
President & Chief Executive Officer

Chileda

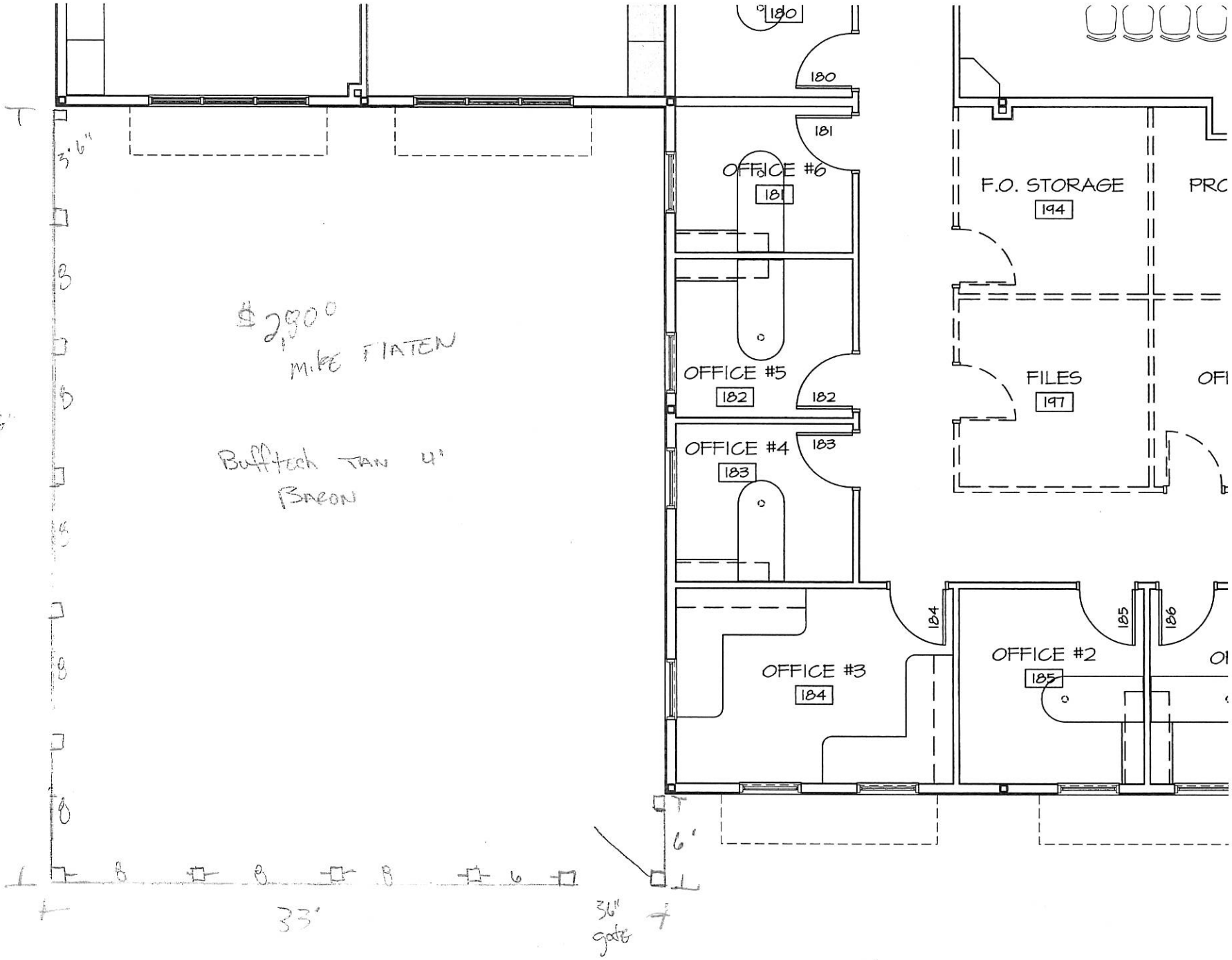


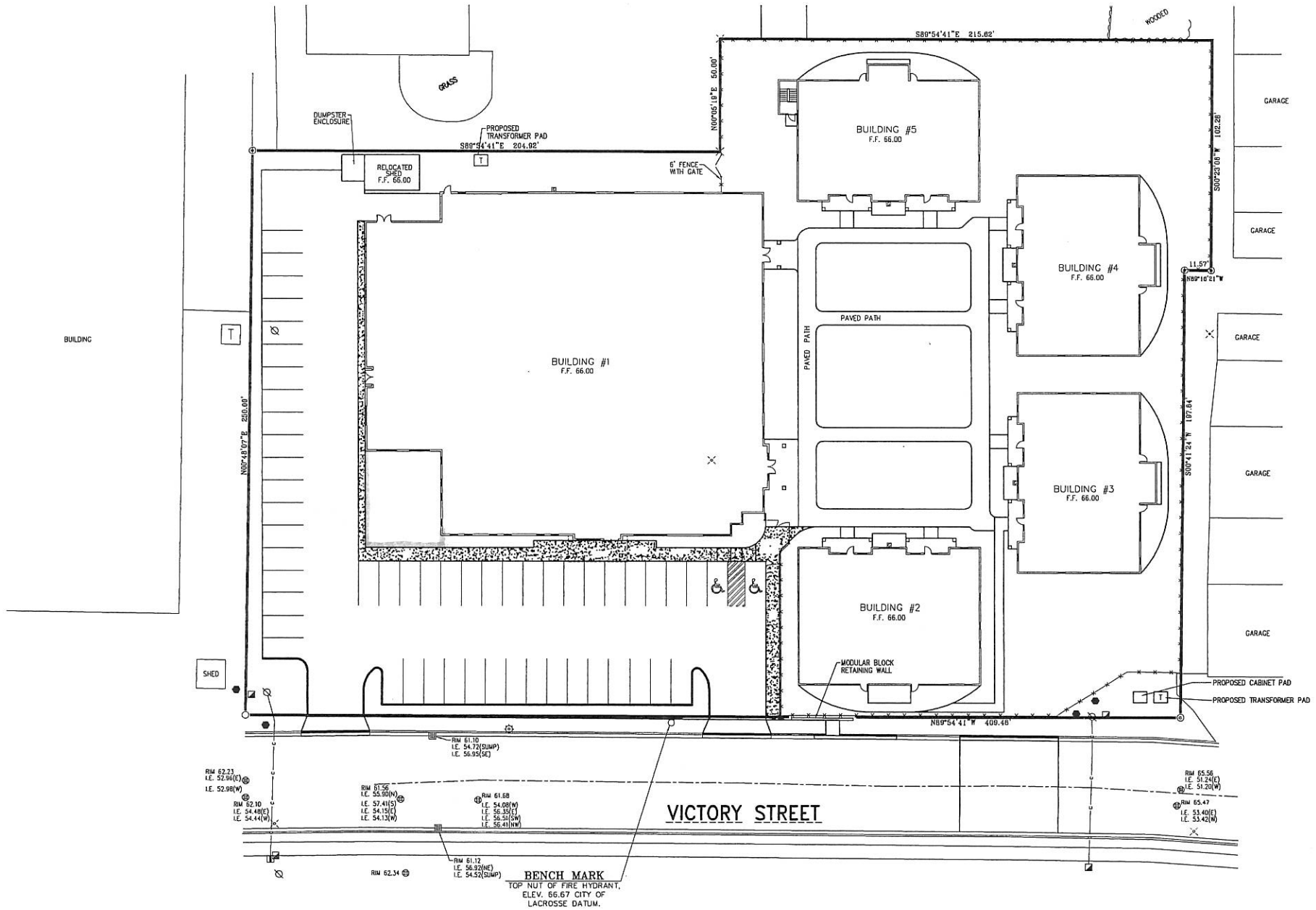
BARON/BARON WITH MIDRAIL

Heights: 3', 4', 5' & 6' (5' & 6' include midrail)

Picket Style: 7/8" x 3"

Picket Spacing: 2-15/16"





VICTORY STREET

BENCHMARK
 TOP NUT OF FIRE HYDRANT,
 ELEV. 66.67 CITY OF
 LACROSSE DATUM.

RIM 62.23
 I.E. 52.96(E)
 I.E. 52.98(W)

RIM 61.56
 I.E. 55.90(N)
 I.E. 57.41(S)
 I.E. 54.15(E)
 I.E. 54.33(W)

RIM 61.68
 I.E. 54.08(W)
 I.E. 56.35(E)
 I.E. 56.51(W)
 I.E. 56.41(NW)

RIM 62.34

RIM 61.12
 I.E. 56.32(N)
 I.E. 54.52(SUMP)

RIM 65.56
 I.E. 51.24(E)
 I.E. 51.20(W)

RIM 65.47
 I.E. 53.40(E)
 I.E. 53.42(W)

