

CONVENTIONAL SYMBOLS

SECTION LINE	---	SECTION CORNER SYMBOL		R/W MONUMENT (TO BE SET)	●
QUARTER LINE	---	SECTION CORNER MONUMENT		NON-MONUMENTED R/W POINT	○
SIXTEENTH LINE	---	GEODETIC SURVEY MONUMENT		FOUND IRON PIN (1-INCH UNLESS NOTED)	IP
NEW REFERENCE LINE	---	SIXTEENTH CORNER MONUMENT		OFF-PREMISE SIGN	
NEW R/W LINE	---	SIGN		COMPENSABLE	
EXISTING R/W OR HE LINE	---	PARCEL NUMBER	25	NON-COMPENSABLE	
PROPERTY LINE	---	UTILITY NUMBER	40		
LOT, TIE & OTHER MINOR LINES	---	PARALLEL OFFSETS			
SLOPE INTERCEPT	---				
CORPORATE LIMITS	---				
UNDERGROUND FACILITY (COMMUNICATIONS, ELECTRIC, ETC)	---				
NEW R/W (FEE OR HE) (HATCHING VARIES BY OWNER)	---				
TEMPORARY LIMITED EASEMENT AREA	---				
EASEMENT AREA (PERMANENT LIMITED OR RESTRICTED DEVELOPMENT)	---				
TRANSMISSION STRUCTURES	---				
BUILDING TO BE REMOVED	---				
BRIDGE	---				

CONVENTIONAL ABBREVIATIONS

ACCESS RIGHTS	AR	POINT OF INTERSECTION	PI
ACRES	AC	PROPERTY LINE	PL
AHEAD	AH	RECORDED AS	(100')
ALUMINUM	ALUM	REEL / IMAGE	R/I
AND OTHERS	ET AL	REFERENCE LINE	R/L
BACK	BK	REMAINING	REM
BLOCK	BLK	RESTRICTIVE DEVELOPMENT	RDE
CENTERLINE	C/L	EASEMENT	
CERTIFIED SURVEY MAP	CSM	RIGHT	RT
CONCRETE	CONC	RIGHT OF WAY	R/W
COUNTY	CO	SECTION	SEC
COUNTY TRUNK HIGHWAY	CTH	SEPTIC VENT	SEPV
DISTANCE	DIST	SQUARE FEET	SF
CORNER	COR	STATE TRUNK HIGHWAY	STH
DOCUMENT NUMBER	DOC	STATION	STA
EASEMENT	EASE	TELEPHONE PEDESTAL	TP
EXISTING	EX	TEMPORARY LIMITED EASEMENT	TLE
GAS VALVE	GV		
GRID NORTH	GN	TRANSPORTATION PROJECT	TPP
HIGHWAY EASEMENT	HE	PLAT	
IDENTIFICATION	ID	UNITED STATES HIGHWAY	USH
LAND CONTRACT	LC	VOLUME	V
LEFT	LT		
MONUMENT	MON		
NATIONAL GEODETIC SURVEY	NGS		
NUMBER	NO		
OUTLOT	OL		
PAGE	P		
POINT OF TANGENCY	PT		
PERMANENT LIMITED EASEMENT	PLE		
POINT OF BEGINNING	POB		
POINT OF CURVATURE	PC		
POINT OF COMPOUND CURVE	PCC		

CURVE DATA

LONG CHORD	LCH
LONG CHORD BEARING	LCB
RADIUS	R
DEGREE OF CURVE	D
CENTRAL ANGLE	Δ/DELTA
LENGTH OF CURVE	L
TANGENT	T
DIRECTION AHEAD	DA
DIRECTION BACK	DB

NOTES:

COORDINATES AND BEARINGS ON THIS PLAT ARE ORIENTED TO THE WISCONSIN COUNTY COORDINATE SYSTEM, LA CROSSE COUNTY ZONE, NAD 83 (2011) ADJUSTMENT. THE COORDINATES SHOWN ARE GRID COORDINATES AND ARE TO BE USED AS GRID OR GROUND VALUES ON THIS PLAT.

RIGHT OF WAY MONUMENTS ARE 3/4" x 24" REBAR AND WILL BE PLACED PRIOR TO THE COMPLETION OF THE PROJECT.

RIGHT OF WAY BOUNDARIES ARE DEFINED WITH COURSES OF THE PERIMETER OF THE HIGHWAY LANDS REFERENCED TO THE U.S. PUBLIC LAND SURVEY OR OTHER SURVEYS OF PUBLIC RECORD.

CONVENTIONAL UTILITY SYMBOLS

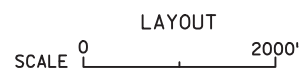
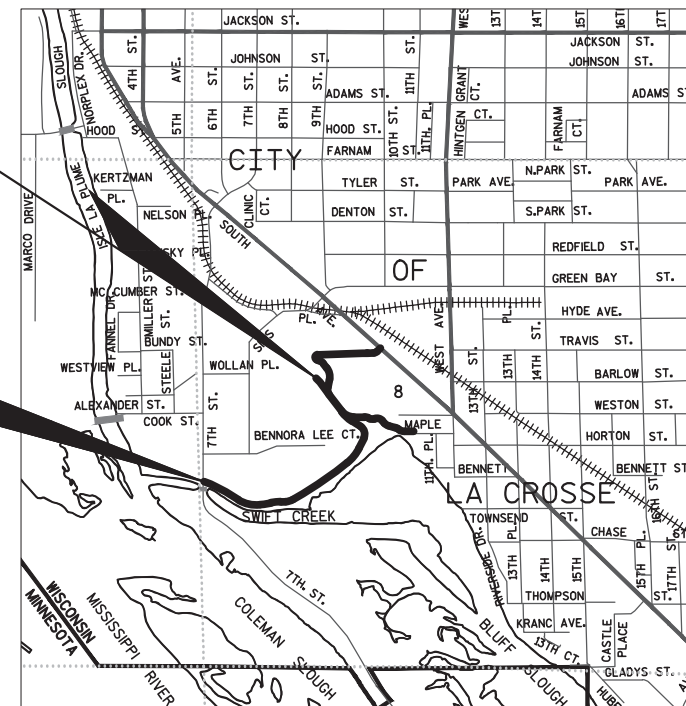
WATER	---
GAS	---
TELEPHONE	---
OVERHEAD	---
TRANSMISSION LINES	---
ELECTRIC	---
CABLE TELEVISION	---
FIBER OPTIC	---
SANITARY SEWER	---
STORM SEWER	---

END RELOCATION ORDER

PROJECT 5991-07-33
 STA 37+78.97
 2292.07' S AND 1306.20' E FROM NW COR
 SEC 8, T-15-N, R-7-W
 Y = 124,110.768
 X = 446,918.135

BEGIN RELOCATION ORDER

PROJECT 5991-07-33
 STA 9+93.40
 3365.45' S AND 146.29' E FROM NW COR
 SEC 8, T-15-N, R-7-W
 Y = 123,037.392
 X = 445,758.233



TOTAL NET LENGTH OF CENTERLINE = 0.524 MI

R/W PROJECT NUMBER	5991-07-33	SHEET NUMBER	4.01	TOTAL SHEETS	11
FEDERAL PROJECT NUMBER					
PLAT OF RIGHT-OF-WAY REQUIRED FOR					
CITY OF LA CROSSE, VIP TRAIL EXPANSION					
(7TH STREET SOUTH TO MAPLE STREET)					
NON HIGHWAY			LA CROSSE COUNTY		
CONSTRUCTION PROJECT NUMBER					
5991-07-34					

Mead & Hunt



William F. Kottler
 12/09/2016

WILLIAM F. KOTTLER
 S-2348

STATE OF WISCONSIN
 CITY OF LA CROSSE

APPROVED FOR CITY OF LA CROSSE

DATE: _____ (Signature)

SCHEDULE OF LANDS & INTERESTS REQUIRED

OWNERS NAMES ARE SHOWN FOR REFERENCE PURPOSES ONLY AND ARE SUBJECT TO CHANGE PRIOR TO THE TRANSFER OF LAND INTERESTS TO CITY OF LA CROSSE.

PARCEL NUMBER	SHEET NUMBER	OWNER(S)	INTEREST REQUIRED	EX R/W ACRES REQUIRED				
				NEW	EXISTING	TOTAL	PE	TLE
01	4.04, 4.05, 4.06, 4.07, 4.08, 4.09, 4.10	GUNDERSEN LUTHERAN MEDICAL CENTER, INC.	PE, TLE	0.00	0.00	0.00	2.59	1.23
02	4.07, 4.08	SOUTH AVENUE SELF STORAGE, LLC	PE, TLE	0.00	0.00	0.00	0.01	0.02
03	4.08	HISTORIC GUND BREWERY LOFTS, LLC	PE, TLE	0.00	0.00	0.00	0.15	0.25
04	4.10	ELMER C. AND INEZ E. BLANK	PE, TLE	0.00	0.00	0.00	0.03	0.01

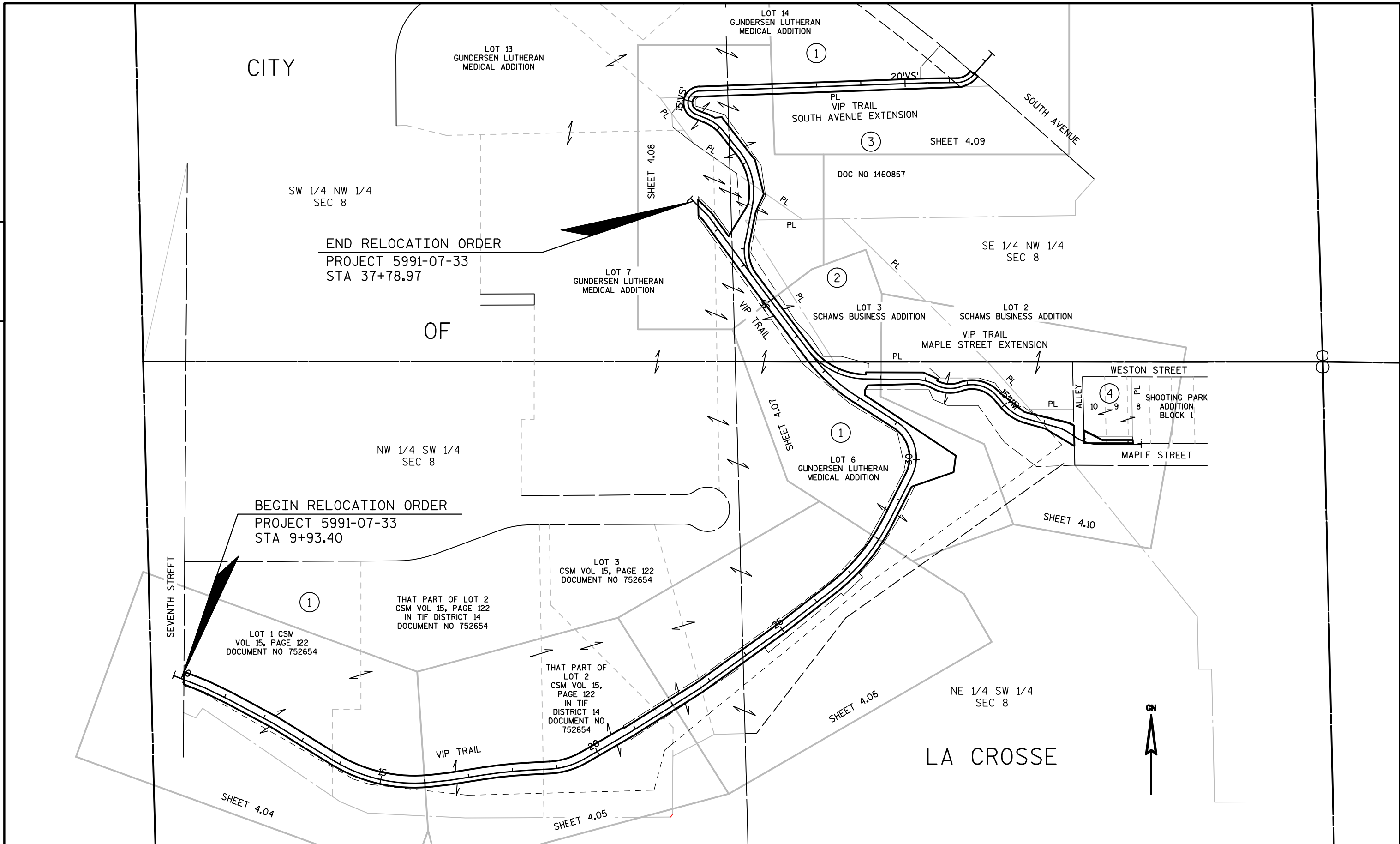
SCHEDULE OF UTILITY INTERESTS REQUIRED

UTILITY NUMBER	SHEET NUMBER	OWNER(S)	INTEREST REQUIRED
80	4.08, 4.09	CENTURYLINK	RELEASE OF RIGHTS
81	4.08	XCEL ENERGY - ELECTRICAL	RELEASE OF RIGHTS
82	4.10	XCEL ENERGY - GAS	RELEASE OF RIGHTS

REVISION DATE	DATE 12/9/2016	SCALE, FEET	HWY: VIP TRAIL EXPANSION	COUNTY R/W PROJECT NUMBER: 5991-07-33	PLAT SHEET 4.02
	GRID FACTOR		COUNTY: LA CROSSE	CONSTRUCTION PROJECT NUMBER: 5991-07-34	PS&E SHEET ----- E

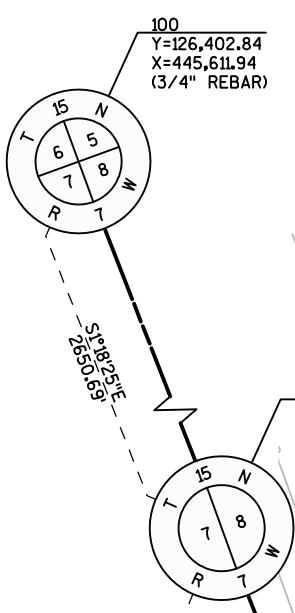
4

4



REVISION DATE	DATE 12/9/2016	SCALE, FEET 0' 100' 200'	HWY: VIP TRAIL EXPANSION	COUNTY R/W PROJECT NUMBER: 5991-07-33	PLAT SHEET 4.03
GRID FACTOR			COUNTY: LA CROSSE	CONSTRUCTION PROJECT NUMBER: 5991-07-34	PS&E SHEET ----- E

CURVE 1
 PI STA = 15+03.56
 Y = 122789.849
 X = 446203.258
 DELTA = 38°14'35"
 D = 16°22'13"
 T = 121.35'
 L = 233.61'
 R = 350.00'
 PC STA = 13+82.22
 Y = 122853.685
 X = 446100.060
 PT STA = 16+15.83
 Y = 122803.592
 X = 446323.823



CITY

①
 GUNDERSEN
 LUTHERAN MEDICAL
 CENTER, INC.
 LOT 1 CSM
 VOL 15, PAGE 122
 DOCUMENT NO 752654

NW 1/4 SW 1/4
 SEC 8

①
 GUNDERSEN
 LUTHERAN MEDICAL
 CENTER, INC.
 THAT PART OF LOT 2
 CSM VOL 15, PAGE 122
 IN TIF DISTRICT 14
 DOCUMENT NO 752654

BEGIN RELOCATION ORDER
 PROJECT 5991-07-33
 STA 9+93.40
 Y = 123037.392
 X = 445758.233

OF



COURSE TABLE		
COURSE	BEARING	DISTANCE
409-400	N0°22'21"E	28.92'
409-201	"	10.71'
201-400	"	18.21'

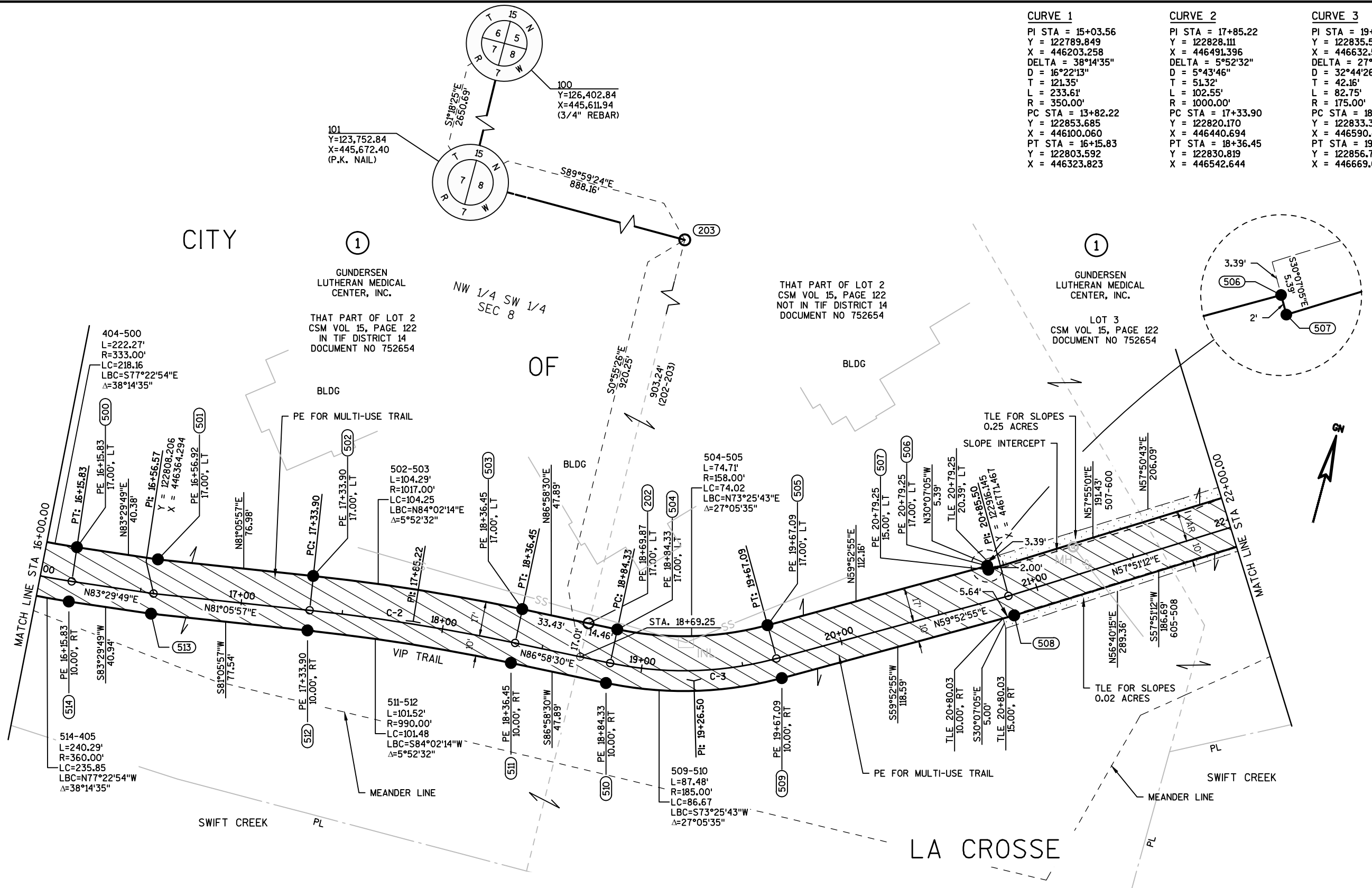
BASIS OF EXISTING R/W
 SEVENTH STREET - GUNDERSEN LUTHERAN MEDICAL CENTER ADDITION

REVISION DATE	DATE 12/9/2016	SCALE, FEET 0' 25' 50'	HWY: VIP TRAIL EXPANSION	STATE R/W PROJECT: 5991-07-33	PLAT SHEET 4.04
	GRID FACTOR 10000		COUNTY: LA CROSSE	CONSTRUCTION PROJECT: 5991-07-34	PS&E SHEET

4

4

CURVE 1	CURVE 2	CURVE 3
PI STA = 15+03.56	PI STA = 17+85.22	PI STA = 19+26.50
Y = 122789.849	Y = 122828.111	Y = 122835.571
X = 446203.258	X = 446491.396	X = 446632.571
DELTA = 38°14'35"	DELTA = 5°52'32"	DELTA = 27°05'35"
D = 16°22'13"	D = 5°43'46"	D = 32°44'26"
T = 121.35'	T = 51.32'	T = 42.16'
L = 233.61'	L = 102.55'	L = 82.75'
R = 350.00'	R = 1000.00'	R = 175.00'
PC STA = 13+82.22	PC STA = 17+33.90	PC STA = 18+84.33
Y = 122853.685	Y = 122820.170	Y = 122833.346
X = 446100.060	X = 446440.694	X = 446590.465
PT STA = 16+15.83	PT STA = 18+36.45	PT STA = 19+67.09
Y = 122803.592	Y = 122830.819	Y = 122856.728
X = 446323.823	X = 446542.644	X = 446669.042



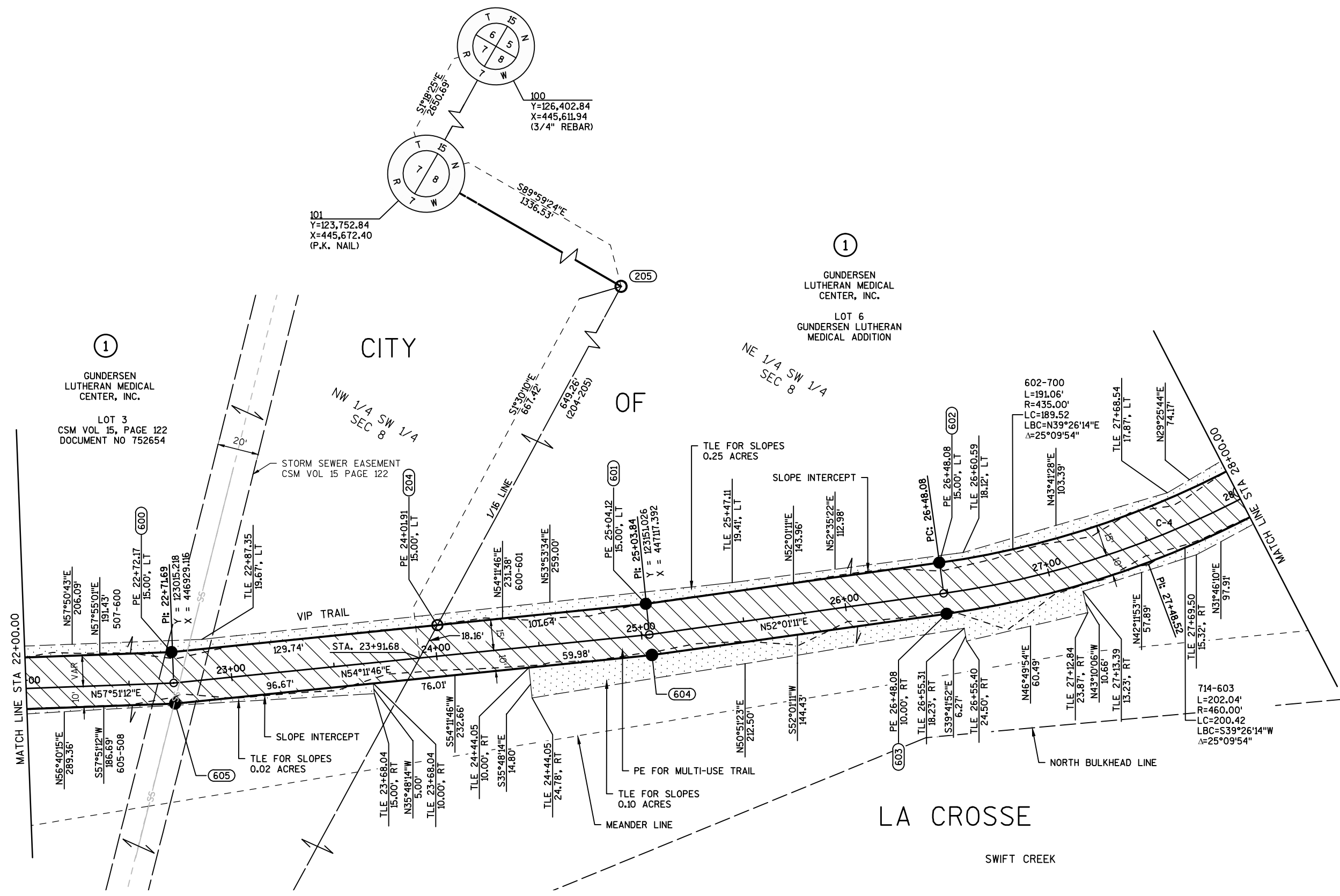
REVISION DATE	DATE 12/9/2016	SCALE, FEET 0' 25' 50'	HWY: VIP TRAIL EXPANSION	STATE R/W PROJECT: 5991-07-33	PLAT SHEET 4.05
	GRID FACTOR 10000		COUNTY: LA CROSSE	CONSTRUCTION PROJECT: 5991-07-34	PS&E SHEET



CURVE 4
 PI STA = 27+48.52
 Y = 123301.602
 X = 447310.258
 DELTA = 25°09'54"
 D = 12°43'57"
 T = 100.44'
 L = 197.65'
 R = 450.00'
 PC STA = 26+48.08
 Y = 123239.791
 X = 447231.087
 PT STA = 28+45.72
 Y = 123391.212
 X = 447355.631

4

4

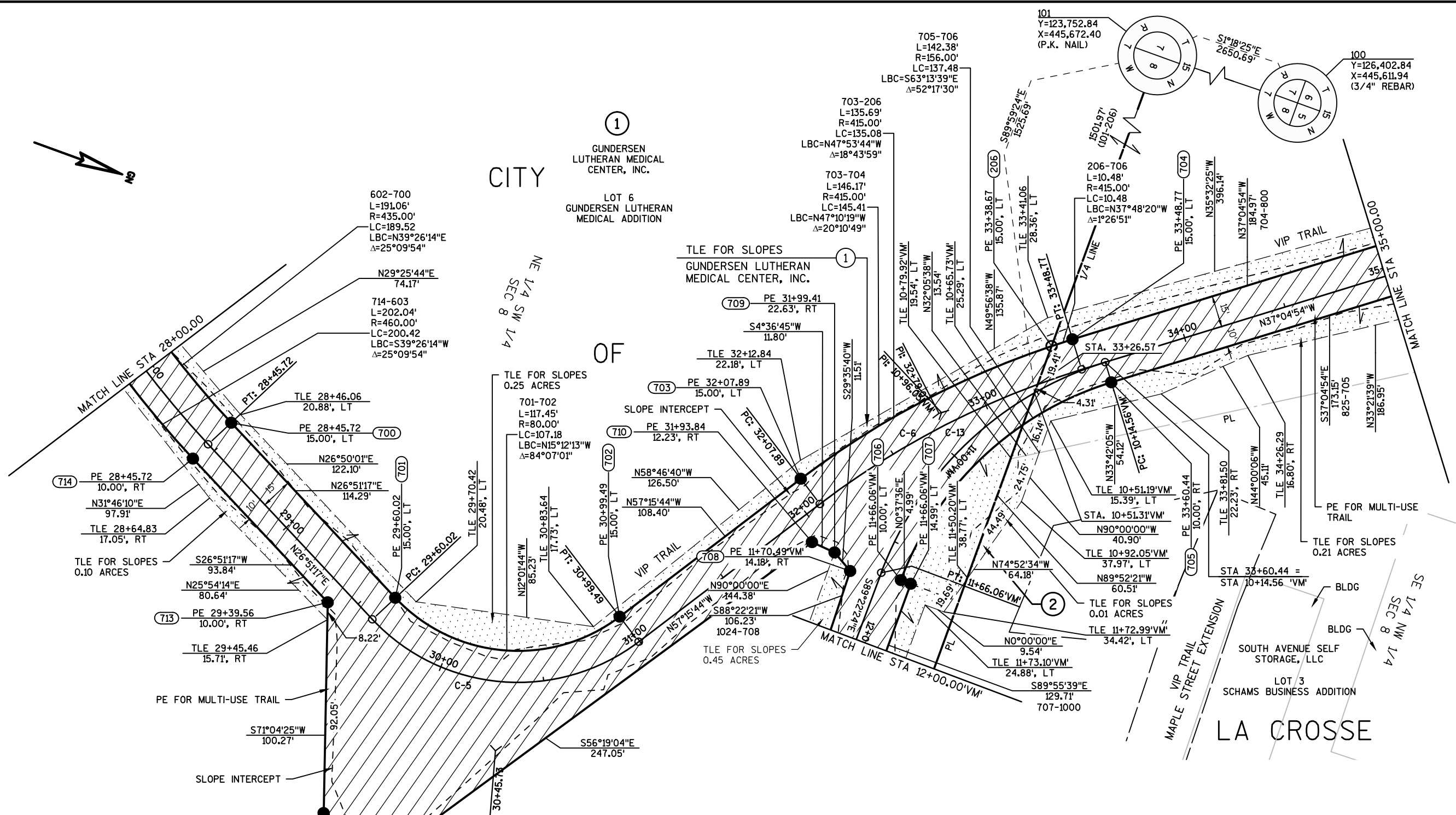


REVISION DATE	DATE 12/9/2016	SCALE, FEET 0' 25' 50'	HWY: VIP TRAIL EXPANSION	STATE R/W PROJECT: 5991-07-33	PLAT SHEET 4.06
	GRID FACTOR 10000		COUNTY: LA CROSSE	CONSTRUCTION PROJECT: 5991-07-34	PS&E SHEET



4

4



①
GUNDERSEN
LUTHERAN MEDICAL
CENTER, INC.

LOT 6
GUNDERSEN LUTHERAN
MEDICAL ADDITION

OF

LA CROSSE

CURVE 4	CURVE 5	CURVE 6	CURVE 13
PI STA = 27+48.52	PI STA = 30+45.73	PI STA = 32+79.07	PI STA = 10+96.05'VM'
Y = 123301.602	Y = 123569.648	Y = 123713.118	Y = 123714.201
X = 447310.258	X = 447445.980	X = 447222.828	X = 447222.009
DELTA = 25°09'54"	DELTA = 84°07'01"	DELTA = 20°10'49"	DELTA = 52°17'30"
D = 12°43'57"	D = 60°18'41"	D = 14°19'26"	D = 34°30'56"
T = 100.44'	T = 85.71'	T = 71.18'	T = 81.49'
L = 197.65'	L = 139.47'	L = 140.89'	L = 151.50'
R = 450.00'	R = 95.00'	R = 400.00'	R = 166.00'
PC STA = 26+48.08	PC STA = 29+60.02	PC STA = 32+07.89	PC STA = 10+14.56'VM'
Y = 123239.791	Y = 123493.178	Y = 123674.624	Y = 123779.210
X = 447231.087	X = 447407.261	X = 447282.701	X = 447172.876
PT STA = 28+45.72	PT STA = 30+99.49	PT STA = 33+48.77	PT STA = 11+66.06'VM'
Y = 123391.212	Y = 123616.002	Y = 123769.904	Y = 123713.310
X = 447355.631	X = 447373.882	X = 447179.909	X = 447303.491

REVISION DATE	DATE 12/9/2016	SCALE, FEET 0' 25' 50'	HWY: VIP TRAIL EXPANSION	STATE R/W PROJECT: 5991-07-33	PLAT SHEET 4.07
	GRID FACTOR 10000		COUNTY: LA CROSSE	CONSTRUCTION PROJECT: 5991-07-34	PS&E SHEET

COURSE TABLE		
COURSE	BEARING	DISTANCE
875-876	N0°40'47"W	49.96'
875-803	"	7.19'
803-804	"	35.72'
804-876	"	7.05'
822-823	S11°13'28"W	71.48'
822-826	"	19.12'
826-827	"	24.97'
827-823	"	27.39'
820-829	S14°23'54"E	74.73'
829-821	"	5.05'
882-886	N54°58'53"W	200.64'
882-829	"	5.47'
829-830	"	40.85'
830-885	"	150.08'
830-884	"	31.64'
884-885	"	118.44'
885-886	"	4.24'
886-887	N52°08'21"E	57.92'
887-889	N0°14'34"W	31.22'
888-888	"	28.44'
888-889	"	2.78'
888-885	S36°35'49"E	82.73'

CURVE 8
 PI STA = 12+69.94'VS'
 Y = 124173.658
 X = 447061.263
 DELTA = 49°54'03"
 D = 38°11'50"
 T = 69.79'
 L = 130.64'
 R = 150.00'
 PC STA = 12+00.15'VS'
 Y = 124105.204
 X = 447047.679
 PT STA = 13+30.79'VS'
 Y = 124228.141
 X = 447017.651

80 CENTURYLINK
NO RECORDED EASEMENT

81 XCEL ENERGY ELECTRIC
NO RECORDED EASEMENT

SW 1/4 NW 1/4
SEC 8

1 GUNDERSEN LUTHERAN CENTER, INC.

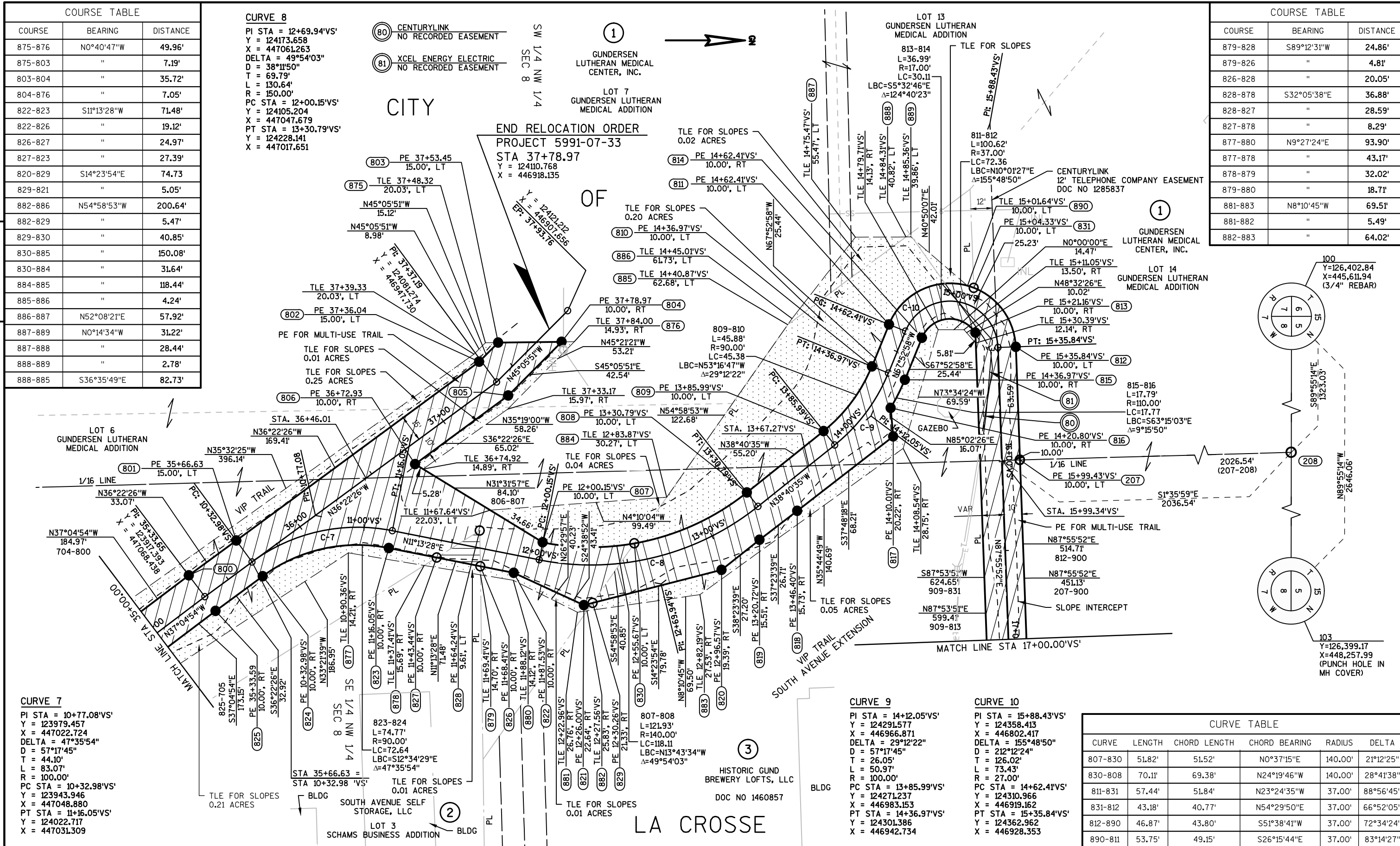
LOT 7 GUNDERSEN LUTHERAN MEDICAL ADDITION

END RELOCATION ORDER
PROJECT 5991-07-33
 STA 37+78.97
 Y = 124110.768
 X = 446918.135

COURSE TABLE		
COURSE	BEARING	DISTANCE
879-828	S89°12'31"W	24.86'
879-826	"	4.81'
826-828	"	20.05'
828-878	S32°05'38"E	36.88'
828-827	"	28.59'
827-878	"	8.29'
877-880	N9°27'24"E	93.90'
877-878	"	43.17'
878-879	"	32.02'
879-880	"	18.71'
881-883	N8°10'45"W	69.51'
881-882	"	5.49'
882-883	"	64.02'

4

4



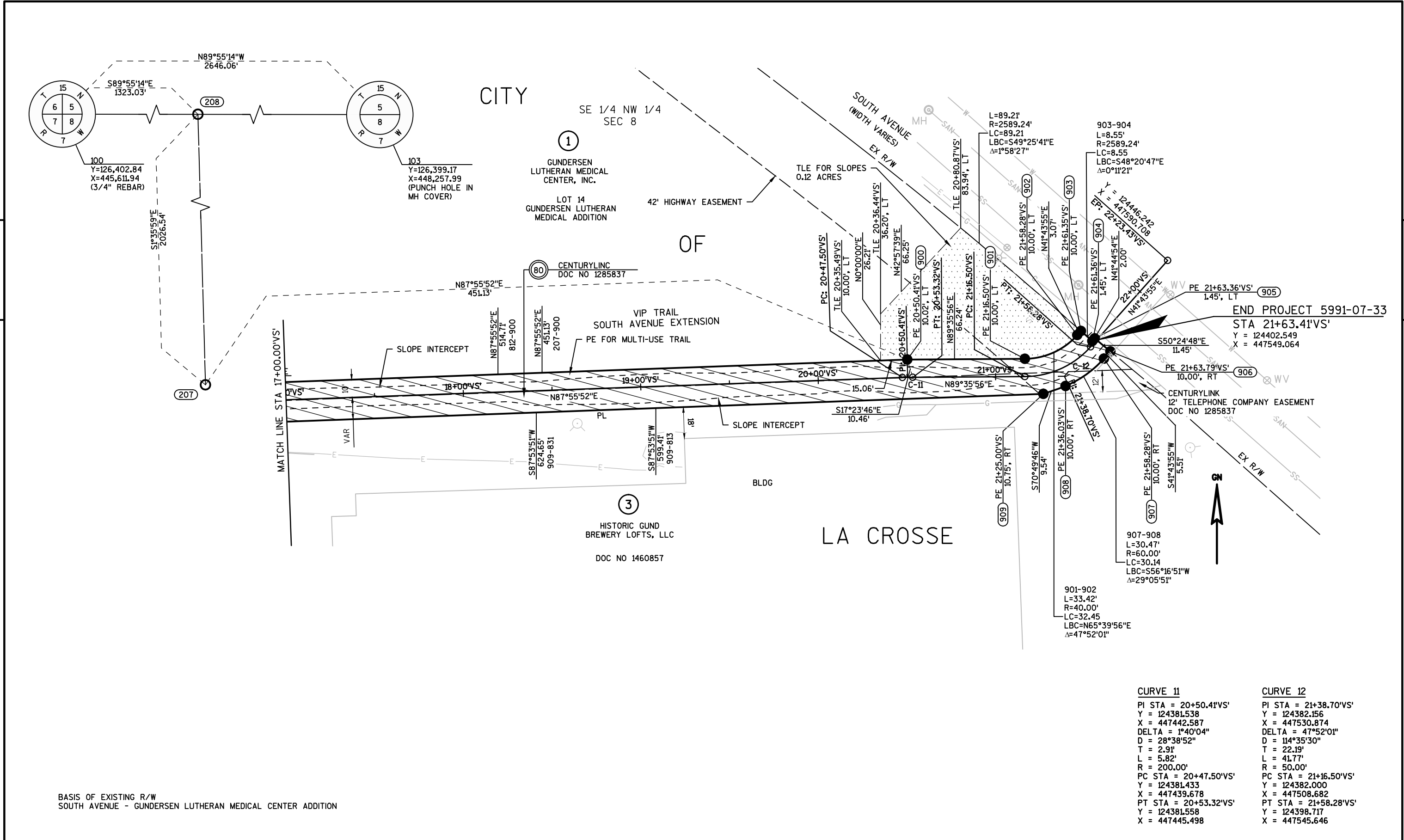
CURVE 7
 PI STA = 10+77.08'VS'
 Y = 123979.457
 X = 447022.724
 DELTA = 47°35'54"
 D = 57°17'45"
 T = 44.10'
 L = 83.07'
 R = 100.00'
 PC STA = 10+32.98'VS'
 Y = 123943.946
 X = 447048.880
 PT STA = 11+16.05'VS'
 Y = 124022.717
 X = 447031.309

CURVE 9
 PI STA = 14+12.05'VS'
 Y = 124291.577
 X = 446966.871
 DELTA = 29°12'22"
 D = 57°17'45"
 T = 26.05'
 L = 50.97'
 R = 100.00'
 PC STA = 13+85.99'VS'
 Y = 124271.237
 X = 446983.153
 PT STA = 14+36.97'VS'
 Y = 124301.386
 X = 446942.734

CURVE 10
 PI STA = 15+88.43'VS'
 Y = 124358.413
 X = 446802.417
 DELTA = 155°48'50"
 D = 212°12'24"
 T = 126.02'
 L = 73.43'
 R = 27.00'
 PC STA = 14+62.41'VS'
 Y = 124310.966
 X = 446919.162
 PT STA = 15+35.84'VS'
 Y = 124362.962
 X = 446928.353

CURVE TABLE					
CURVE	LENGTH	CHORD LENGTH	CHORD BEARING	RADIUS	DELTA
807-830	51.82'	51.52'	N0°37'15"E	140.00'	21°12'25"
830-808	70.11'	69.38'	N24°19'46"W	140.00'	28°41'38"
811-831	57.44'	51.84'	N23°24'35"W	37.00'	88°56'45"
831-812	43.18'	40.77'	N54°29'50"E	37.00'	66°52'05"
812-890	46.87'	43.80'	S51°38'41"W	37.00'	72°34'24"
890-811	53.75'	49.15'	S26°15'44"E	37.00'	83°14'27"

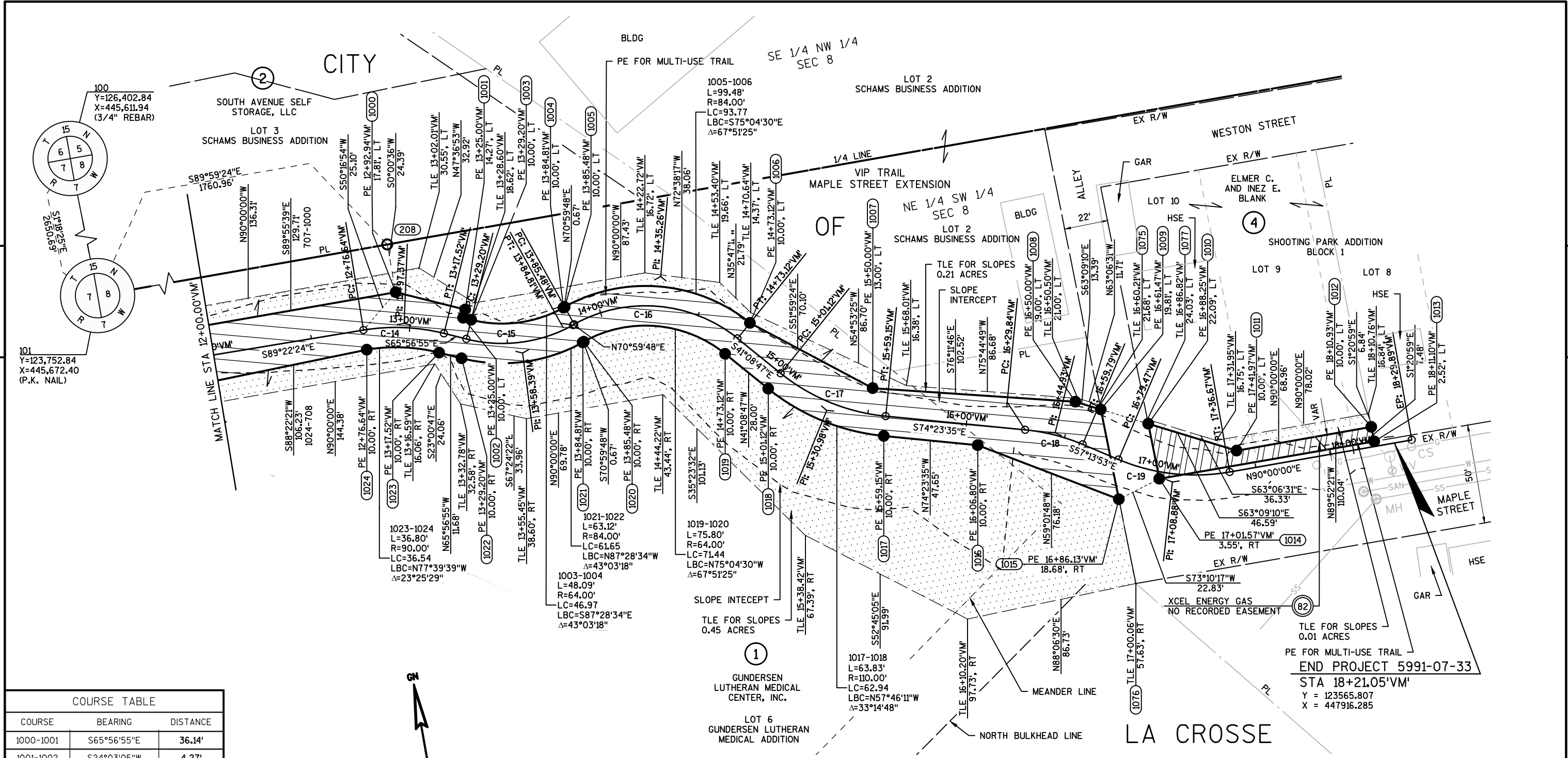
REVISION DATE	DATE 12/9/2016	SCALE, FEET	HWY: VIP TRAIL EXPANSION	STATE R/W PROJECT: 5991-07-33	PLAT SHEET 4.08
	GRID FACTOR 10000	0' 25' 50'	COUNTY: LA CROSSE	CONSTRUCTION PROJECT: 5991-07-34	PS&E SHEET E



BASIS OF EXISTING R/W
SOUTH AVENUE - GUNDERSEN LUTHERAN MEDICAL CENTER ADDITION

CURVE 11	CURVE 12
PI STA = 20+50.41'VS'	PI STA = 21+38.70'VS'
Y = 124381.538	Y = 124382.156
X = 447442.587	X = 447530.874
DELTA = 1°40'04"	DELTA = 47°52'01"
D = 28°38'52"	D = 114°35'30"
T = 2.91'	T = 22.19'
L = 5.82'	L = 41.77'
R = 200.00'	R = 50.00'
PC STA = 20+47.50'VS'	PC STA = 21+16.50'VS'
Y = 124381.433	Y = 124382.000
X = 447439.678	X = 447508.682
PT STA = 20+53.32'VS'	PT STA = 21+58.28'VS'
Y = 124381.558	Y = 124398.717
X = 447445.498	X = 447545.646

REVISION DATE	DATE 12/9/2016	SCALE, FEET 0' 25' 50'	HWY: VIP TRAIL EXPANSION	STATE R/W PROJECT: 5991-07-33	PLAT SHEET 4.09
	GRID FACTOR 10000		COUNTY: LA CROSSE	CONSTRUCTION PROJECT: 5991-07-34	PS&E SHEET



4

4

COURSE TABLE		
COURSE	BEARING	DISTANCE
1000-1001	S65°56'55"E	36.14'
1001-1002	S24°03'05"W	4.27'
1002-1003	S65°56'55"E	4.20'
1075-1076	S1°20'59"E	91.78'
1075-1009	"	2.25'
1009-1015	"	46.17'
1015-1075	"	43.36'
1008-1010	S63°09'10"E	38.35'
1009-1010	"	24.96'
1014-1077	N1°20'59"W	30.51'
1014-1010	"	28.28'
1010-1077	"	2.23'

BASIS OF EXISTING R/W
MAPLE STREET AND ALLEY - SHOOTING PARK ADDITION

<p>CURVE 14 PI STA = 12+97.37'VM' Y = 123711.874 X = 447434.787 DELTA = 23°25'29" D = 57°17'45" T = 20.73' L = 40.88' R = 100.00' PC STA = 12+76.64'VM' Y = 123712.101 X = 447414.057 PT STA = 13+17.52'VM' Y = 123703.425 X = 447453.719</p>	<p>CURVE 15 PI STA = 13+58.39'VM' Y = 123686.767 X = 447491.043 DELTA = 43°03'18" D = 77°25'36" T = 29.19' L = 55.61' R = 74.00' PC STA = 13+29.20'VM' Y = 123698.663 X = 447464.387 PT STA = 13+84.81'VM' Y = 123696.272 X = 447518.643</p>	<p>CURVE 16 PI STA = 14+35.26'VM' Y = 123712.701 X = 447566.347 DELTA = 67°09'25" D = 77°25'36" T = 49.78' L = 87.64' R = 74.00' PC STA = 13+85.48'VM' Y = 123696.491 X = 447519.280 PT STA = 14+73.12'VM' Y = 123675.216 X = 447599.101</p>	<p>CURVE 17 PI STA = 15+30.98'VM' Y = 123631.652 X = 447637.166 DELTA = 33°14'48" D = 57°17'45" T = 29.86' L = 58.03' R = 100.00' PC STA = 15+01.12'VM' Y = 123654.134 X = 447617.522 PT STA = 15+59.15'VM' Y = 123623.620 X = 447665.921</p>	<p>CURVE 18 PI STA = 16+44.93'VM' Y = 123600.542 X = 447748.539 DELTA = 17°09'42" D = 57°17'45" T = 15.09' L = 29.95' R = 100.00' PC STA = 16+29.84'VM' Y = 123604.601 X = 447734.006 PT STA = 16+59.79'VM' Y = 123592.374 X = 447761.227</p>	<p>CURVE 19 PI STA = 17+08.88'VM' Y = 123565.807 X = 447802.501 DELTA = 32°46'07" D = 57°17'45" T = 29.40' L = 57.19' R = 100.00' PC STA = 16+79.47'VM' Y = 123581.721 X = 447777.778 PT STA = 17+36.67'VM' Y = 123565.807 X = 447831.903</p>
--	---	---	--	--	--

REVISION DATE	DATE 12/9/2016	SCALE, FEET 0' 25' 50'	HWY: VIP TRAIL EXPANSION	STATE R/W PROJECT: 5991-07-33	PLAT SHEET 4.10
	GRID FACTOR 10000		COUNTY: LA CROSSE	CONSTRUCTION PROJECT: 5991-07-34	PS&E SHEET

4

Point Number	Y (Easting)	X (Northing)
400	445,764.43	123,053.22
401	445,818.65	123,032.00
402	445,871.74	123,006.28
403	445,975.29	122,950.86
404	446,109.00	122,868.14
405	446,094.80	122,845.18
406	445,961.80	122,927.45
407	445,859.48	122,982.22
408	445,807.82	123,007.24
409	445,764.24	123,024.30
500	446,321.90	122,820.48
501	446,362.01	122,825.06
502	446,438.06	122,836.97
503	446,541.75	122,847.80
504	446,589.57	122,850.32
505	446,660.51	122,871.43
506	446,757.51	122,927.70
507	446,758.54	122,925.99
508	446,776.64	122,907.58
509	446,674.06	122,848.08
510	446,590.99	122,823.36
511	446,543.17	122,820.83
512	446,442.24	122,810.29
513	446,365.63	122,798.29
514	446,324.96	122,793.66
600	446,920.73	123,027.66
601	447,108.39	123,163.02
602	447,221.86	123,251.61
603	447,237.24	123,231.91
604	447,123.40	123,143.03
605	446,934.71	123,006.92
700	447,342.25	123,397.99
701	447,393.88	123,499.95
702	447,365.77	123,603.39
703	447,274.59	123,662.01
704	447,167.94	123,760.86
705	447,180.85	123,785.24
706	447,303.60	123,723.31
707	447,303.66	123,728.30
708	447,307.76	123,699.08
709	447,302.08	123,689.08
710	447,301.13	123,677.31
711	447,506.71	123,540.30
712	447,501.79	123,502.93
713	447,406.94	123,470.41
714	447,364.55	123,386.69
800	447,056.42	123,908.42
801	447,036.80	123,935.05
802	446,936.33	124,071.46
803	446,925.62	124,082.13

Point Number	Y (Easting)	X (Northing)
804	446,925.19	124,117.85
805	446,955.33	124,087.82
806	446,993.89	124,035.47
807	447,037.87	124,107.15
808	447,009.84	124,221.89
809	446,975.35	124,264.99
810	446,938.97	124,292.12
811	446,915.40	124,301.70
812	446,927.99	124,372.96
813	446,920.02	124,350.20
814	446,922.93	124,320.23
815	446,946.50	124,310.65
816	446,962.36	124,302.65
817	446,978.37	124,304.04
818	447,020.18	124,250.15
819	447,036.40	124,228.93
820	447,053.30	124,207.61
821	447,073.14	124,130.34
822	447,055.03	124,090.88
823	447,041.12	124,020.77
824	447,056.93	123,949.88
825	447,076.45	123,923.37
826	447,051.31	124,072.13
827	447,046.45	124,047.63
828	447,031.26	124,071.85
829	447,071.88	124,135.23
830	447,038.43	124,158.67
831	446,894.80	124,349.28
900	447,442.37	124,391.54
901	447,508.61	124,392.00
902	447,538.18	124,405.37
903	447,540.23	124,407.66
904	447,546.62	124,401.98
905	447,547.95	124,403.47
906	447,556.78	124,396.17
907	447,553.11	124,392.06
908	447,531.56	124,376.68
909	447,519.02	124,372.19
1000	447,433.36	123,728.14
1001	447,466.37	123,713.41
1002	447,464.62	123,709.51
1003	447,468.46	123,707.80
1004	447,515.39	123,705.73
1005	447,516.02	123,705.95
1006	447,606.63	123,681.80
1007	447,661.86	123,638.63
1008	447,761.42	123,614.17
1009	447,773.36	123,608.12
1010	447,795.64	123,596.85
1011	447,837.21	123,575.81

Point Number	Y (Easting)	X (Northing)
1012	447,906.16	123,575.81
1013	447,906.34	123,568.33
1014	447,796.30	123,568.57
1015	447,774.45	123,561.96
1016	447,709.13	123,601.17
1017	447,663.23	123,613.99
1018	447,609.99	123,647.55
1019	447,591.57	123,668.64
1020	447,522.54	123,687.04
1021	447,521.90	123,686.82
1022	447,460.31	123,689.53
1023	447,449.64	123,694.29
1024	447,413.95	123,702.10

4

REVISION DATE	DATE 12/9/2016	SCALE, FEET 0' 25' 50'	HWY: VIP TRAIL EXPANSION	STATE R/W PROJECT: 5991-07-33	PLAT SHEET 4.11
	GRID FACTOR 10000		COUNTY: LA CROSSE	CONSTRUCTION PROJECT: 5991-07-34	PS&E SHEET E