

**CITY OF LA CROSSE, WISCONSIN
CITY PLAN COMMISSION
REPORT
September 3, 2019**

- **AGENDA ITEM – 19-1285 (Andrea Schnick)**
Resolution approving a revised amendment to the Project Plan and boundaries of Tax Incremental District No. 6, City of La Crosse, Wisconsin.

- **ROUTING:** CPC 9/3/2019

- **BACKGROUND INFORMATION:**
An amendment to the boundary and subsequently the project plan was approved by the Common Council earlier this year, removing several parcels from the TID. Through the approval process with the Department of Revenue we learned that only one parcel was eligible for being removed without having to make an amendment to an additional TID. Because this one eligible parcel was the impetus for the amendment, staff decided to revise the TID amendment to only remove the one parcel. Staff anticipates that this TID will be closed in 2020 since it is beyond its expenditure period and the Project Plan has been completed.

- **GENERAL LOCATION:**
Tax Incremental District #6 covers most of the downtown area and parts are overlapped by TIDs 11 and 17.

- **RECOMMENDATION OF OTHER BOARDS AND COMMISSIONS:**
The previous amendment was approved by the Common Council on 4/11/2019.

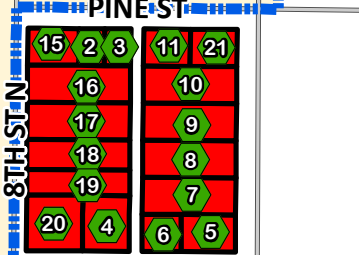
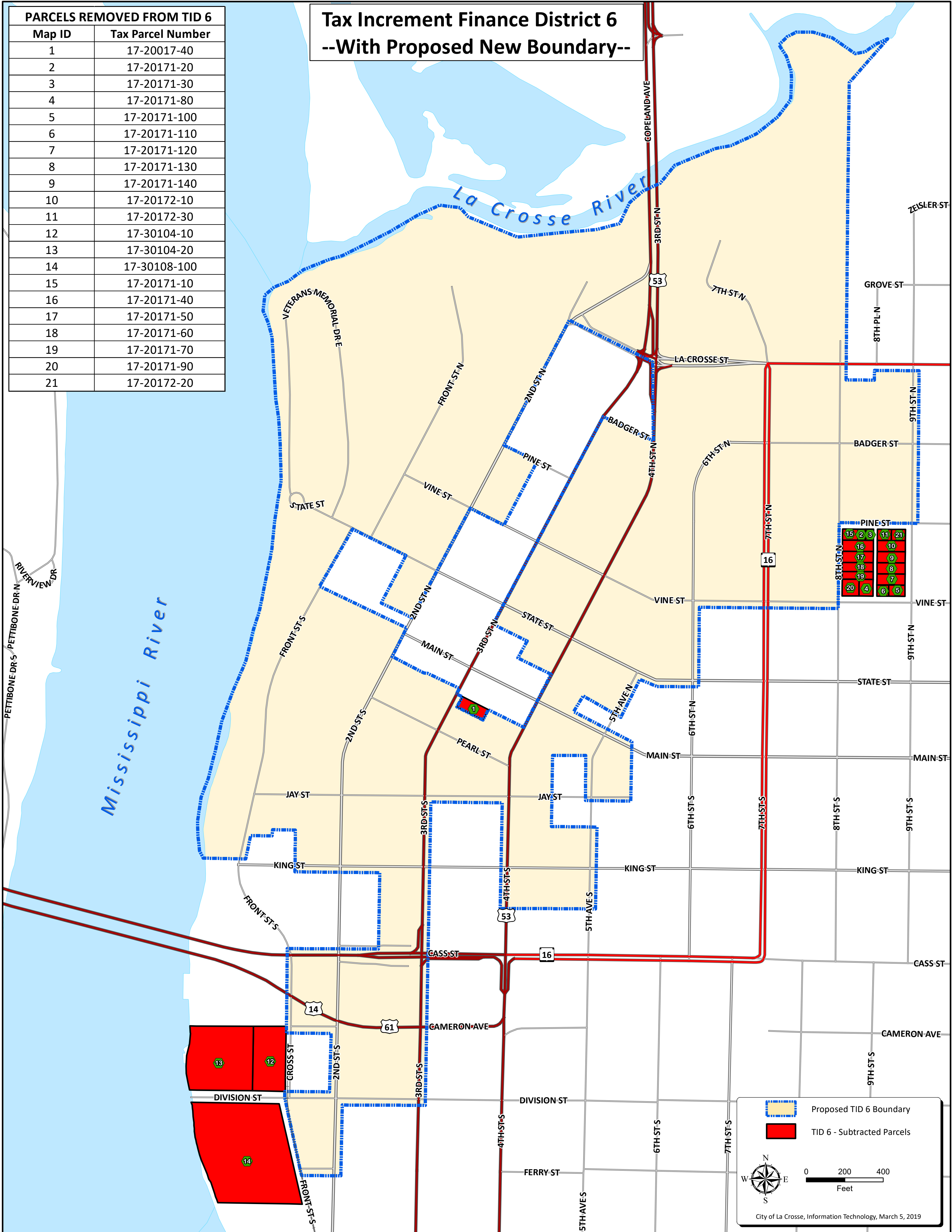
- **CONSISTENCY WITH ADOPTED COMPREHENSIVE PLAN:**
The Comprehensive Plan promotes the prudent use of Tax Incremental Financing Districts.



- **PLANNING RECOMMENDATION:**
Planning Staff recommend approval


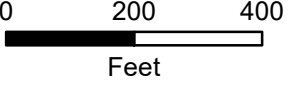
PARCELS REMOVED FROM TID 6

Map ID	Tax Parcel Number
1	17-20017-40
2	17-20171-20
3	17-20171-30
4	17-20171-80
5	17-20171-100
6	17-20171-110
7	17-20171-120
8	17-20171-130
9	17-20171-140
10	17-20172-10
11	17-20172-30
12	17-30104-10
13	17-30104-20
14	17-30108-100
15	17-20171-10
16	17-20171-40
17	17-20171-50
18	17-20171-60
19	17-20171-70
20	17-20171-90
21	17-20172-20

**Tax Increment Finance District 6
--With Proposed New Boundary--**



 Proposed TID 6 Boundary
 TID 6 - Subtracted Parcels

City of La Crosse, Information Technology, March 5, 2019

**TAX INCREMENT FINANCE
DISTRICT No. 6
AMENDMENT #4**

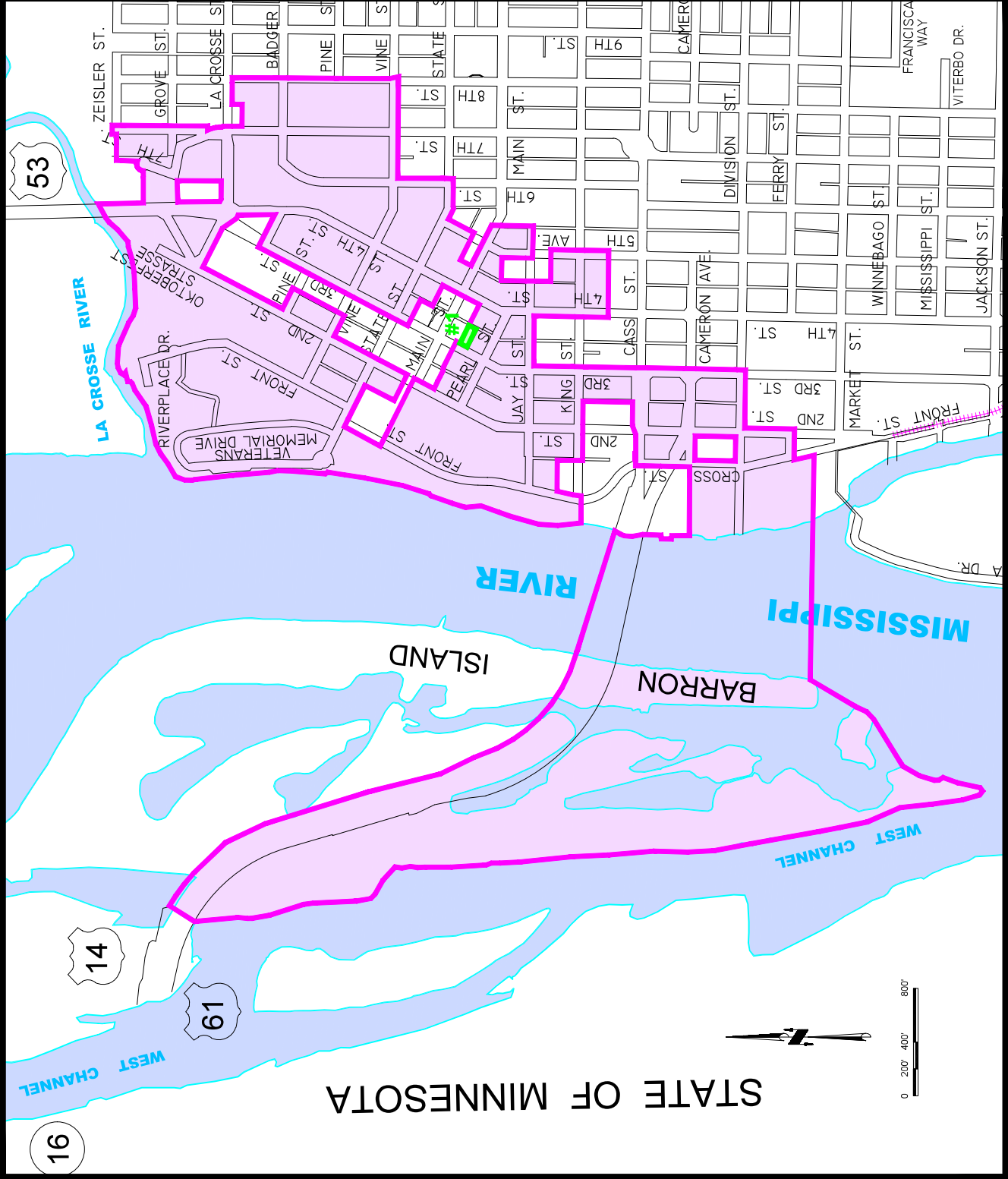


DISTRICT No. 6



Subtracted Parcel

#1 = 17-20017-40



STATE OF MINNESOTA