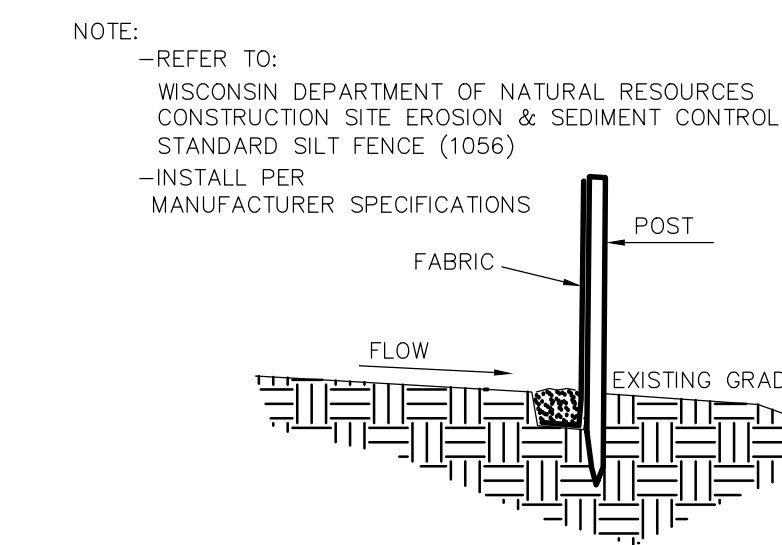
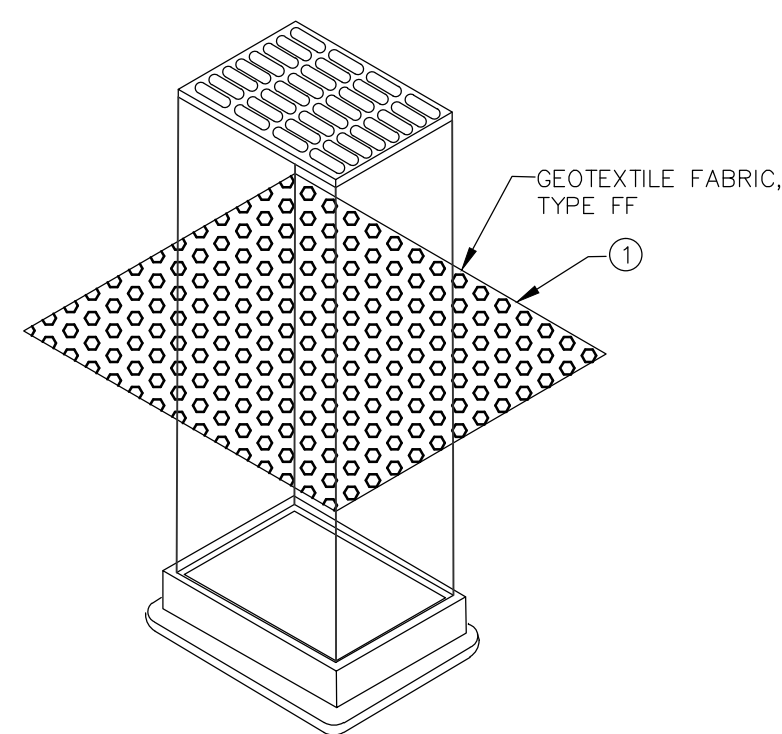


- NOTES:
1. PLACE FILTER FABRIC (PROPEX 2002 OR EQUAL) UNDER BREAKER ROCK TO PREVENT MUD MIGRATION THROUGH ROCK.
 2. ENTRANCE MUST BE MAINTAINED REGULARLY TO PREVENT SEDIMENTATION ON PUBLIC ROADWAYS. FUGITIVE ROCK WILL BE REMOVED FROM ADJACENT ROADWAYS DAILY OR MORE FREQUENTLY AS NECESSARY.

A VEHICLE TRACKING CONTROL
NO SCALE



B TYPICAL SILT FENCE INSTALLATION
NO SCALE

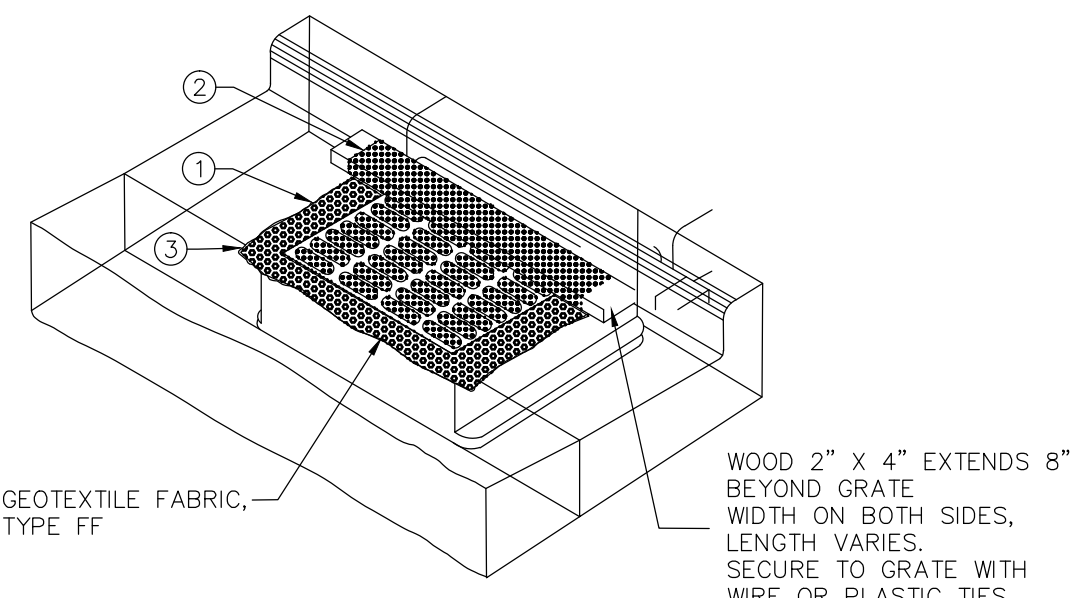


GENERAL NOTES

INLET PROTECTION DEVICES SHALL BE MAINTAINED OR REPLACED AT THE DIRECTION OF THE ENGINEER.
MANUFACTURED ALTERNATIVES APPROVED AND LISTED ON THE WS. D.O.T.'S EROSION CONTROL PRODUCT ACCEPTABILITY LIST MAY BE SUBSTITUTED.
WHEN REMOVING OR MAINTAINING INLET PROTECTION, CARE SHALL BE TAKEN SO THAT THE SEDIMENT TRAPPED ON THE GEOTEXTILE FABRIC DOES NOT FALL INTO THE INLET. ANY MATERIAL FALLING INTO THE INLET SHALL BE REMOVED IMMEDIATELY.

- ① FINISHED SIZE, INCLUDING FLAP POCKETS WHERE REQUIRED SHALL EXTEND A MINIMUM OF 10' AROUND THE PERIMETER TO FACILITATE MAINTENANCE OR REMOVAL.

C INLET PROTECTION, TYPE B (WITHOUT CURB BOX)
NO SCALE

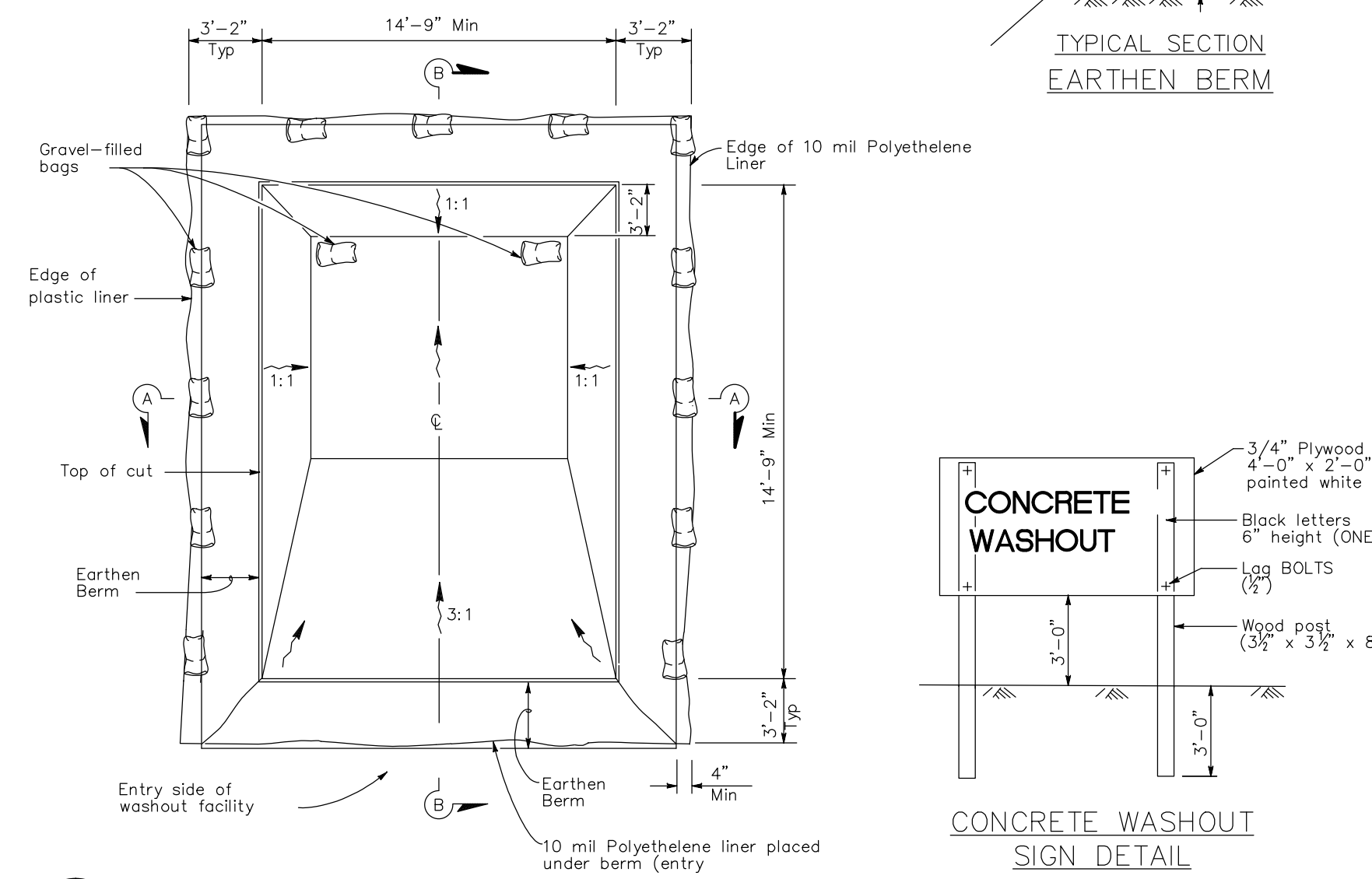
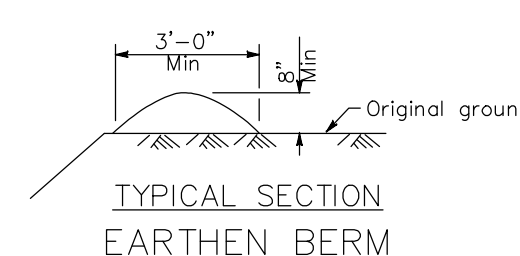
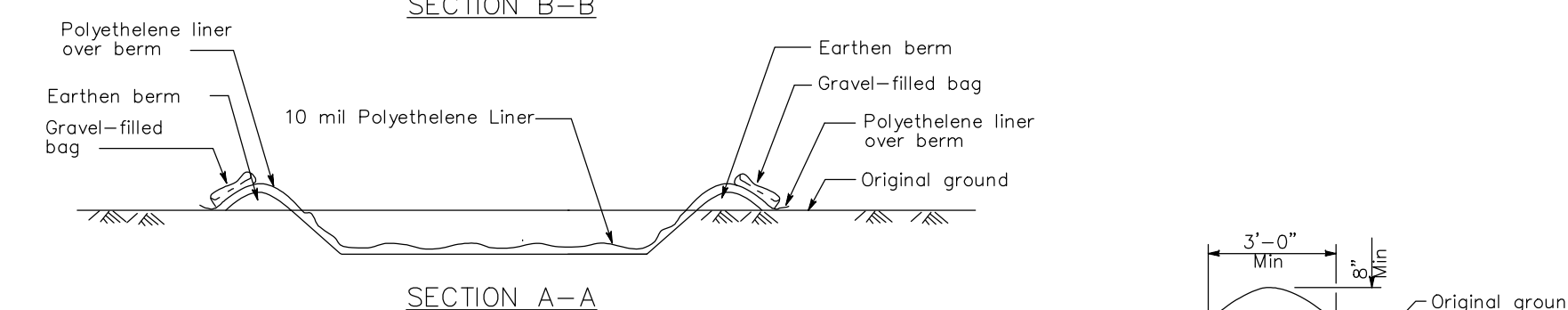
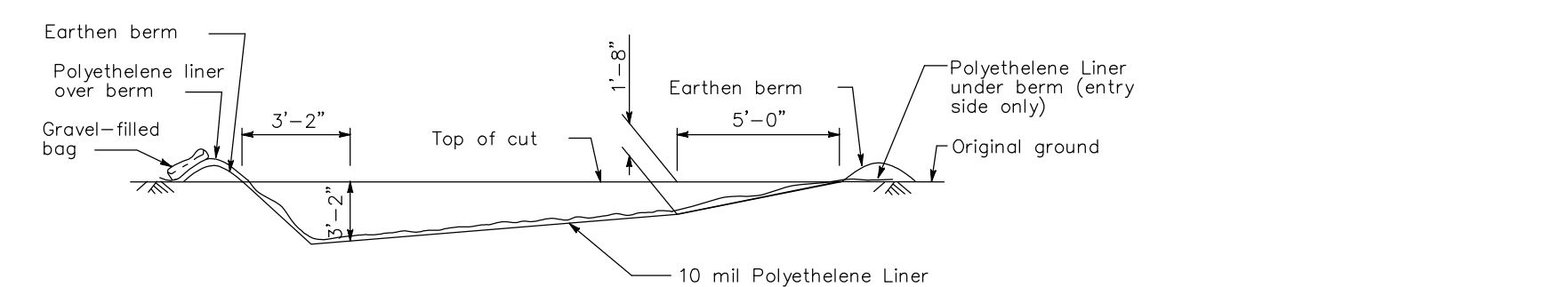
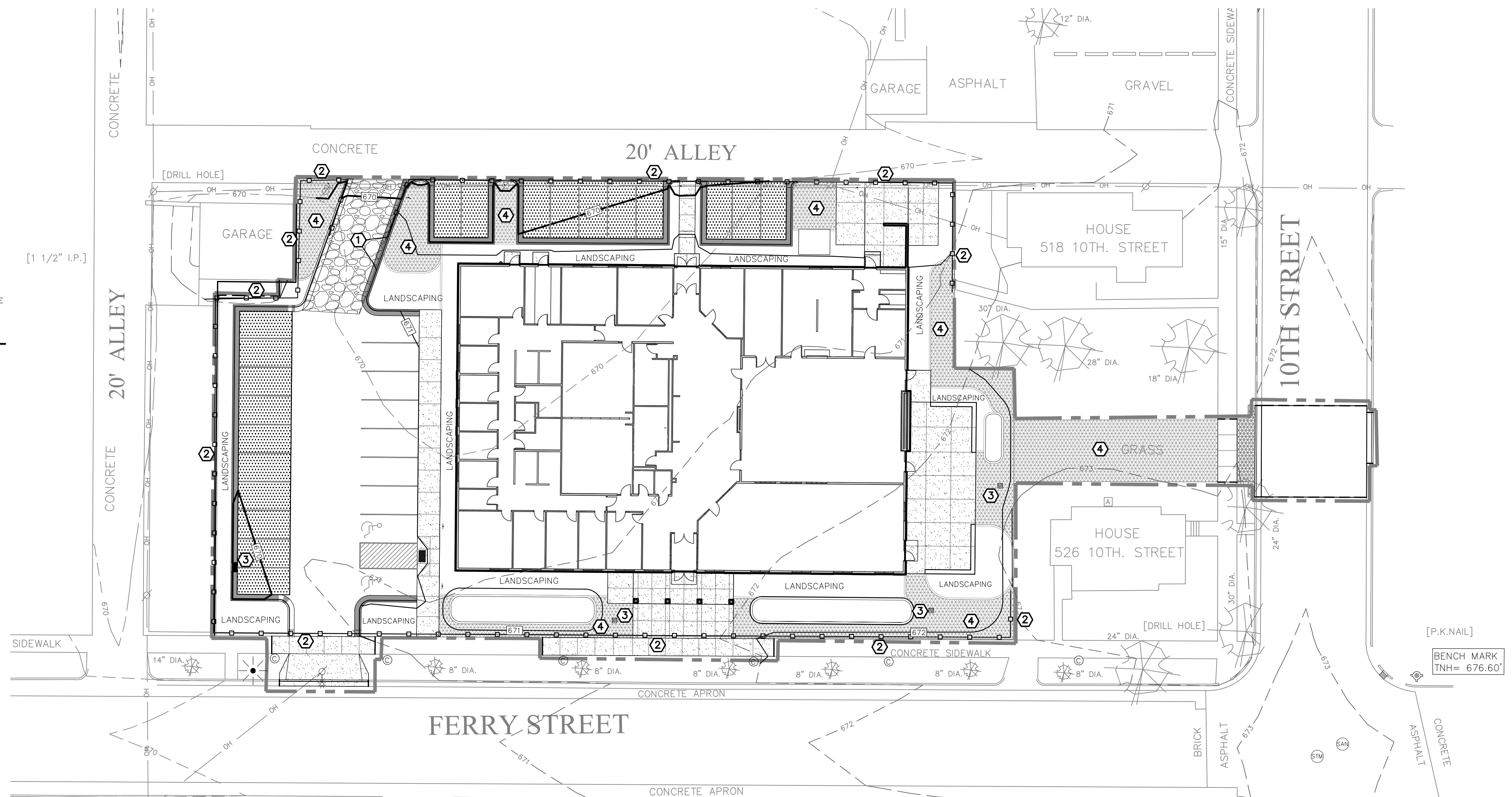


GENERAL NOTES

INLET PROTECTION DEVICES SHALL BE MAINTAINED OR REPLACED AT THE DIRECTION OF THE ENGINEER.
MANUFACTURED ALTERNATIVES APPROVED AND LISTED ON THE WS. D.O.T.'S EROSION CONTROL PRODUCT ACCEPTABILITY LIST MAY BE SUBSTITUTED.
WHEN REMOVING OR MAINTAINING INLET PROTECTION, CARE SHALL BE TAKEN SO THAT THE SEDIMENT TRAPPED ON THE GEOTEXTILE FABRIC DOES NOT FALL INTO THE INLET. ANY MATERIAL FALLING INTO THE INLET SHALL BE REMOVED IMMEDIATELY.

- ① FINISHED SIZE, INCLUDING FLAP POCKETS WHERE REQUIRED SHALL EXTEND A MINIMUM OF 10' AROUND THE PERIMETER TO FACILITATE MAINTENANCE OR REMOVAL.
- ② FOR INLET PROTECTION, TYPE C (WITH CURB BOX), AN ADDITIONAL 18" OF FABRIC IS WRAPPED AROUND THE WOOD AND SECURED WITH STAPLES. THE WOOD SHALL NOT BLOCK THE ENTIRE HEIGHT OF THE CURB BOX OPENING.
- ③ FLAP POCKETS SHALL BE LARGE ENOUGH TO ACCEPT WOOD 2X4.

D INLET PROTECTION, TYPE C (WITH CURB BOX)
NO SCALE



E TEMPORARY CONCRETE WASHOUT FACILITY
NO SCALE

STORM WATER CONSTRUCTION POLLUTION PREVENTION NOTES

SITE CLEARING SHALL APPLY TO ALL AREAS INSIDE LIMITS AS SHOWN ON THE PLANS. REMOVE ALL TREES COMPLETELY AS DIRECTED BY THE OWNER. ANY STRIPPED TOPSOIL SHALL BE STOCKPILED INSIDE THE LIMITS OR PLACED IMMEDIATELY ON SLOPES BEING RESTORED.

SEDIMENT CONTROL STRUCTURES BELOW SEEDING AREAS MUST REMAIN IN PLACE UNTIL THE ENTIRE AREA HAS ESTABLISHED A MATURE COVERING OF HEALTHY VEGETATION.

ALL DISTURBED AREAS SCHEDULED FOR PERMANENT COVER SHALL HAVE TOPSOIL APPLIED, AND BE SEEDING AND MULCHED AS SPECIFIED WITHIN 7 DAYS OF FINAL DISTURBANCE.

MAINTENANCE OF ALL INSTALLED EROSION AND SEDIMENT CONTROL DEVICES SHALL BE THE RESPONSIBILITY OF THE CONTRACTOR AND REMOVED WHEN NO LONGER NECESSARY.

MINIMUM MAINTENANCE SHALL CONSIST OF, BUT NOT LIMITED TO:

- INSPECTING ALL EROSION AND SEDIMENT CONTROL DEVICES AFTER EACH RAINFALL.
- FINISHED AREAS THAT HAVE BEEN DAMAGED OR ERODED SHALL BE RESTORED WITHIN THREE DAYS OF THE DAMAGE.
- UNFINISHED AREAS THAT HAVE BEEN DAMAGED OR ERODED SHALL HAVE THE PREVIOUS MEASURE REAPPLIED WITHIN SEVEN DAYS.
- VEHICLE TRACKING CONTROL APRON SHALL BE PROVIDED IF NECESSARY. SWEEP STREET AT THE END OF EACH DAY.
- SILT FENCES SHALL BE MAINTAINED IN A FUNCTIONING MANNER. FENCES SHALL NOT BE ALLOWED TO SAG, FALL DOWN, OR BECOME FILLED WITH SILT ON THE BACK SIDE. IF SILT BUILDS UP BEHIND A SILT FENCE, IT SHALL BE REMOVED IMMEDIATELY. UNDER NO CIRCUMSTANCES SHALL SILT DEPOSITS BE ALLOWED TO REACH MORE THAN 1/3 THE HEIGHT OF THE FENCE.

SILT FENCE SHALL BE PLACED DOWN SLOPE OF ALL SOIL STOCK PILES DURING CONSTRUCTION IF LEFT MORE THAN SEVEN DAYS. STOCK PILES SHALL BE SEEDING AND MULCHED IF LEFT FOR MORE THAN 14 DAYS.

ADDITIONAL EROSION CONTROL FACILITIES MAY BE REQUIRED DUE TO UNFORESEEN PROBLEMS.

SEDIMENT CONTROL STRUCTURES BELOW LAWN AREAS MAY BE REMOVED ONCE SOD AND FINAL LANDSCAPING IS IN PLACE. SEDIMENT CONTROL STRUCTURES BELOW SEEDING AREAS MUST REMAIN IN PLACE UNTIL THE ENTIRE AREA HAS ESTABLISHED A MATURE COVERING OF HEALTHY VEGETATION. SEDIMENT CONTROL STRUCTURES IN PAVED AREAS SHALL REMAIN IN PLACE UNTIL PAVING IS COMPLETE.

SEDIMENT DEPOSITED IN ROADS OR RIGHT OF WAY DITCHES ADJACENT TO THIS SITE AS A RESULT OF THIS WORK SHALL BE REMOVED. VEGETATION SHALL BE ESTABLISHED WHEN SEDIMENT REMOVAL DESTROYS THE EXISTING VEGETATION. THE ESTABLISHMENT OF VEGETATION SHALL BE IN THE SAME MANNER AS SPECIFIED FOR SEEDING SPECIFIED ELSEWHERE ON THIS PLAN.

SEDIMENT CONTROL DURING CONSTRUCTION:

- A SILT FENCE SHALL BE INSTALLED ALONG ALL DOWN SLOPE EARTHWORK.

- ALL MAINTENANCE PROCEDURES OUTLINED ABOVE SHALL APPLY. SLOPES STEEPER THAN 5:1 SHALL BE PROTECTED WITH EROSION MATTING OR MULCHED WITH STRAW AND COVERED WITH JUTE NETTING.

PROVIDE CONCRETE WASHOUT AREA PER DETAIL (E). UNDER NO CIRCUMSTANCES SHALL CONCRETE WASHOUT BE ALLOWED IN ANY OTHER LOCATION ON THE SITE.

NOTES

- ① SEE DETAIL (A) FOR TRACKING PAD
- ② SEE DETAIL (B) FOR SILT FENCE INSTALLATION
- ③ SEE DETAILS (C) AND (D) FOR INLET PROTECTION
- ④ EROSION CONTROL MATTING SHALL BE CURLEX BY AMERICAN EXCELSIOR OR APPROVED EQUAL. INSTALL TO MANUFACTURER RECOMMENDATION.
- ⑤ PROVIDE CONCRETE WASHOUT PER DETAIL (E)



HSR ASSOCIATES INC.
100 MILWAUKEE STREET
LA CROSSE, WISCONSIN
PHONE: 608.784.1830
FAX: 608.782.5844
WEB SITE: www.hsrasociates.com

Consultant:

PARAGON ASSOCIATES
Environmental Design & Consulting
CIVIL ENGINEERING - LANDSCAPE ARCHITECTURE - SURVEYING
632 COPELAND AVENUE - LA CROSSE, WI 54603
Tel: 608.781.3110 Fax: 608.781.3187 Paragon-Associates

COULEE REGION RECOVERY CENTER
FERRY STREET
LA CROSSE, WISCONSIN
EROSION CONTROL PLAN

Project Number:

AUTO PROJECT #

Project Date:

AUTO PROJECT DATE

Drawn By:

C.G.

Key Plan:

REVIEW
NOT FOR CONSTRUCTION

Revisions:

No.	Description	Date

Graphic Scale: 1"=20'

Last Update: 09/01/17

C300

