

# LA CROSSE SCHOOL DISTRICT

## HAMILTON EARLY LEARNING CENTER SYNTHETIC TURF DEVELOPMENT LA CROSSE, WISCONSIN

REVISIONS	
CHECKED:	DLP
DRAWN:	TDP
DATE:	4-20-17
PROJECT NO.:	17.016

TITLE SHEET

LA CROSSE SCHOOL DISTRICT  
HAMILTON EARLY LEARNING CENTER  
CITY OF LA CROSSE  
LA CROSSE COUNTY, WISCONSIN

Civil Engineering  
Land Surveying  
Landscape Architecture  
5709 Windy Drive, Suite D  
Stevens Point, WI 54482  
715.344.9999(Ph) 715.344.9922(Fx)

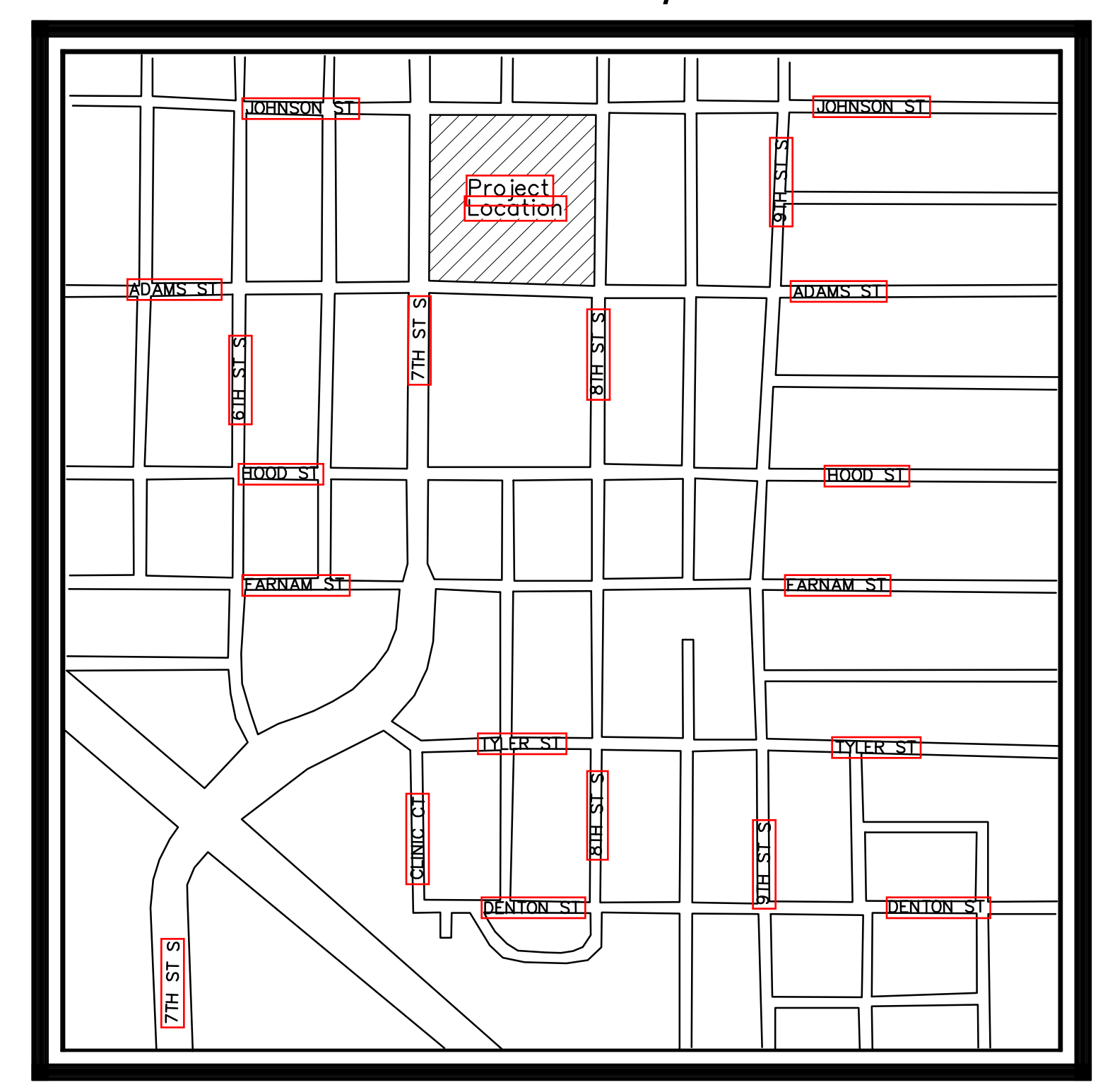


C0.0

### CIVIL DRAWINGS

- C0.0 TITLE SHEET
- C1.0 EXISTING SITE SURVEY
- C2.0 SITE DEMOLITION PLAN
- C3.0 SITE LAYOUT PLAN
- C4.0 SITE GRADING PLAN
- C5.0 SITE STORM SEWER PLAN
- C6.0 SITE DETAILS

Location Map



La Crosse, WI

POINT OF BEGINNING, INC. HOLDS THE RIGHTS TO COPYRIGHT IN AND TO THESE PRINTS, DRAWINGS AND DOCUMENTS. NO REPRODUCTION, COPYING, ALTERATION, MODIFICATION, USAGE, INCORPORATION INTO OTHER DOCUMENTS OR ASSIGNMENT OF THE SAME MAY OCCUR WITHOUT THE PRIOR WRITTEN PERMISSION OF POINT OF BEGINNING, INC.  
©2017 POINT OF BEGINNING, INC.

### SURVEY LEGEND

These symbols and abbreviations will be used in this drawing.

	SANITARY SEWER
	STORM SEWER
	OVERHEAD UTILITIES
	BURIED ELECTRIC
	BURIED GAS
	WATERMAIN
	FENCE LINE
	EDGE OF BITUMINOUS
	RECTANGULAR CATCH BASIN
	CIRCULAR CATCH BASIN
	STORM MANHOLE
	SANITARY MANHOLE
	WATER SERVICE
	WATER VALVE
	HYDRANT
	ELECTRIC METER
	ELECTRIC BOX
	ELECTRIC TRANSFORMER
	POWERPOLE
	GUY WIRE
	GAS VALVE
	GAS VAULT
	COLUMN
	GUARD POST
	CLEAN OUT
	WATER FOUNTAIN
	SIGN
	BASKETBALL HOOP
	PLAY EQUIPMENT
	TREE
	1-1/4" O.D. IRON PIPE FOUND
	CHISELED X SET IN CONC.
	MAG NAIL SET

### UNDERGROUND UTILITIES

THESE RECORD DRAWINGS HAVE BEEN PREPARED, IN PART, ON THE BASIS OF INFORMATION COMPILED AND FURNISHED BY OTHERS. THE SURVEYOR AND ARCHITECT WILL NOT BE RESPONSIBLE FOR ANY ERRORS OR OMISSIONS WHICH HAVE BEEN INCORPORATED INTO THIS DOCUMENT AS A RESULT.

SOME UTILITIES HAVE BEEN LOCATED BY MAPS PROVIDED BY OTHERS - LOCATIONS ARE APPROXIMATE.

PRIVATE UTILITIES HAVE BEEN LOCATED AND ARE SHOWN ON THIS MAP.

FIELD VERIFY SANITARY AND STORM SEWER PIPE SIZE AND LOCATION.

UNDERGROUND UTILITIES SHOWN ON THIS MAP ARE BASED IN PART ON MARKINGS BY DIGGERS HOTLINE (TICKET #20170400154, 20170400152, 20170400148)

### SURVEYOR'S NOTES

1. AT THE TIME OF THE SURVEY, SNOW AND/OR ICE EXISTED OVER THE SUBJECT PROPERTY. POINT OF BEGINNING SHALL NOT BE HELD RESPONSIBLE FOR ANY POSSIBLE ERRORS OR OMISSIONS DUE TO SAID WINTER CONDITIONS.

### DESCRIPTION

ALL OF BLOCK 7 OF E.S. SMITH'S ADDITION TO LACROSSE, LOCATED IN THE SOUTHWEST 1/4 OF THE SOUTHWEST 1/4 OF SECTION 5, TOWNSHIP 15 NORTH, RANGE 7 WEST, CITY OF LA CROSSE, LA CROSSE COUNTY, WISCONSIN.

### BENCH MARK

ELEVATIONS ARE REFERENCED TO NAVD '88 DATUM.

**BENCHMARK #1**  
BURY BOLT ON HYDRANT LOCATED ON THE NORTHEAST CORNER OF THE INTERSECTION OF JOHNSON STREET AND 8TH STREET SOUTH.  
ELEVATION = 672.75

**BENCHMARK #2**  
NORTHWEST BOLT ON HYDRANT LOCATED ON THE NORTHEAST CORNER OF THE INTERSECTION OF ADAMS STREET AND 8TH STREET SOUTH.  
ELEVATION = 672.64

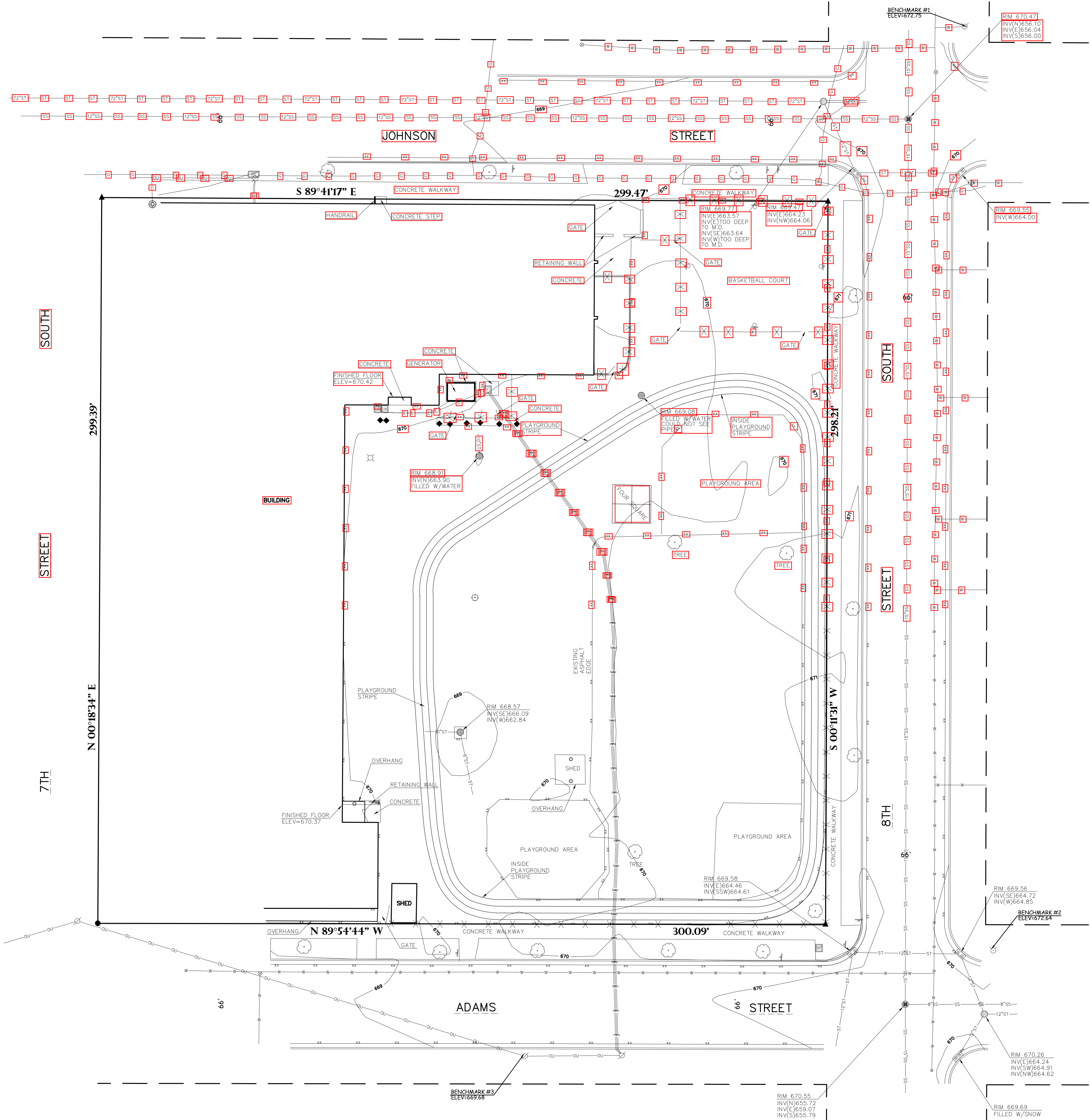
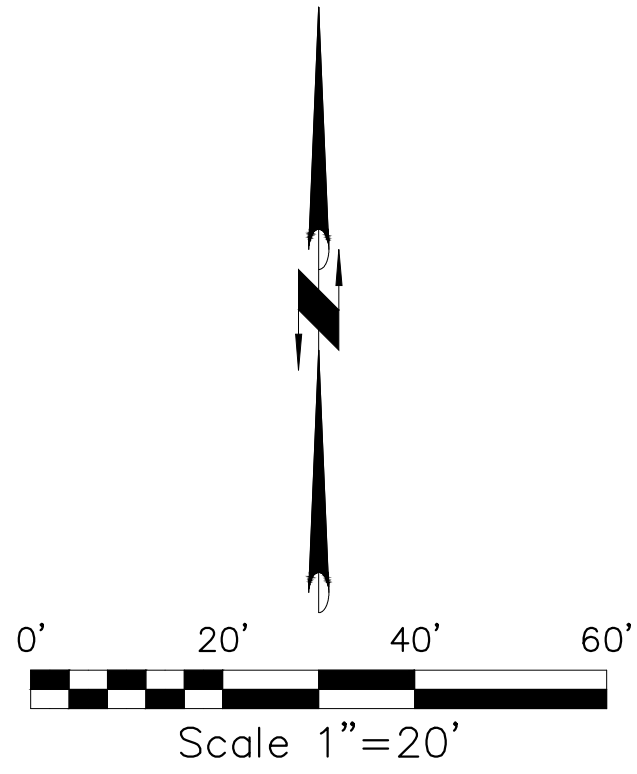
**BENCHMARK #3**  
600 NAIL SET IN POWER POLE LOCATED ON THE SOUTH SIDE OF ADAMS STREET APPROXIMATELY 160 FEET WEST OF 8TH STREET SOUTH.  
ELEVATION = 669.68

### SURVEYOR'S CERTIFICATE

I, DONALD J. BUZA, PROFESSIONAL LAND SURVEYOR DO HEREBY CERTIFY THAT THIS IS A TRUE AND CORRECT COPY OF A TOPOGRAPHICAL SURVEY AS DONE UNDER MY DIRECTION ON JANUARY 30, 31 & FEBRUARY 16, 2017.

DATED THIS \_\_\_\_\_ DAY OF \_\_\_\_\_

\_\_\_\_\_  
DONALD J. BUZA (#2338)  
PROFESSIONAL LAND SURVEYOR



### REVISIONS

CHECKED:	DLP
DRAWN:	TDP
DATE:	4-20-17
PROJECT NO.:	17.016

**EXISTING SITE SURVEY**

**LA CROSSE SCHOOL DISTRICT  
HAMILTON EARLY LEARNING CENTER  
CITY OF LA CROSSE  
LA CROSSE COUNTY, WISCONSIN**

Civil Engineering  
Land Surveying  
Landscape Architecture  
5709 Windy Drive, Suite D  
Stevens Point, WI 54482  
715.344.9999(Ph) 715.344.9922(Fx)

**Point of Beginning**

**C1.0**

POINT OF BEGINNING, INC. HOLDS THE RIGHTS TO COPYRIGHT IN AND TO THESE PRINTS, DRAWINGS AND DOCUMENTS. NO REPRODUCTION, COPYING, ALTERATION, MODIFICATION, USAGE, INCORPORATION INTO OTHER DOCUMENTS OR ASSIGNMENT OF THE SAME MAY OCCUR WITHOUT THE PRIOR WRITTEN PERMISSION OF POINT OF BEGINNING, INC.  
©2017 POINT OF BEGINNING, INC.



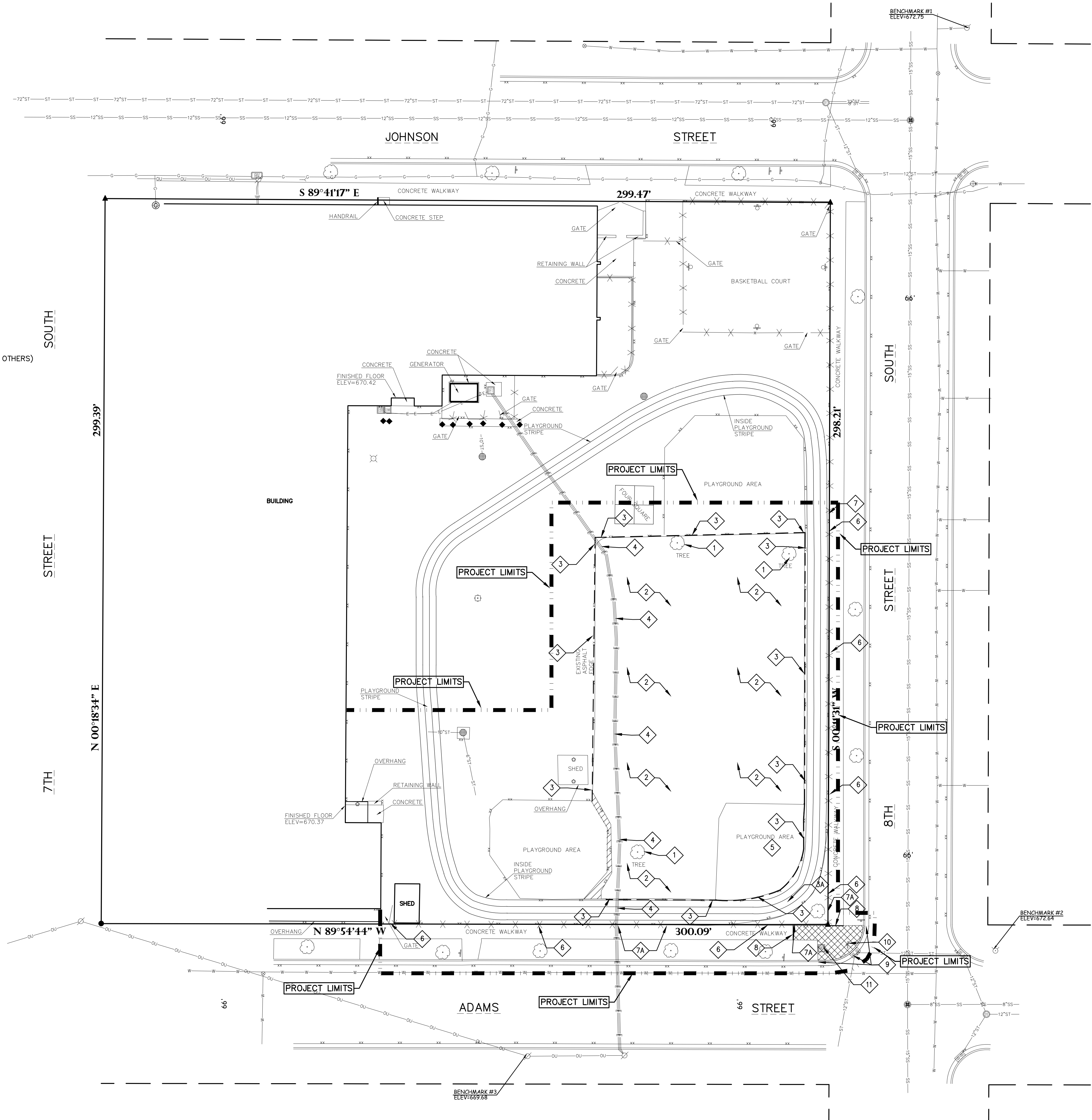
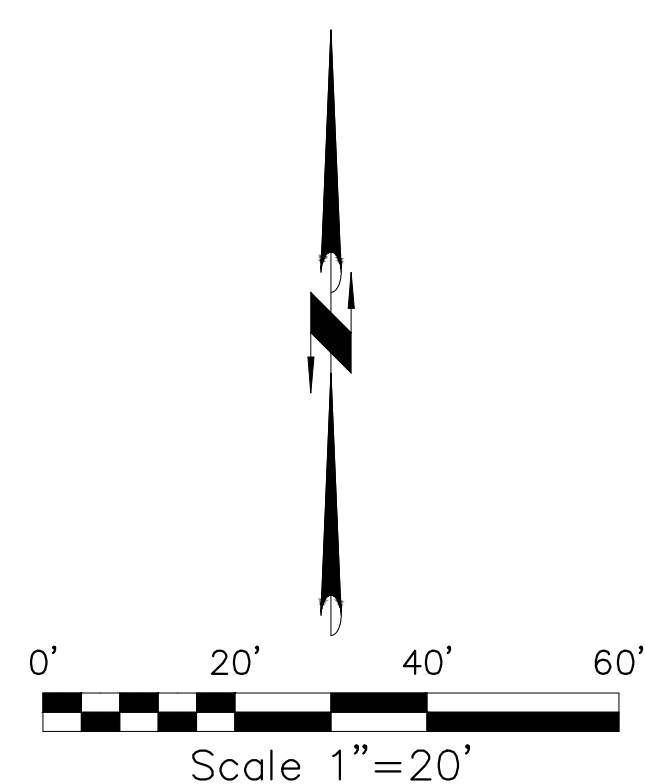
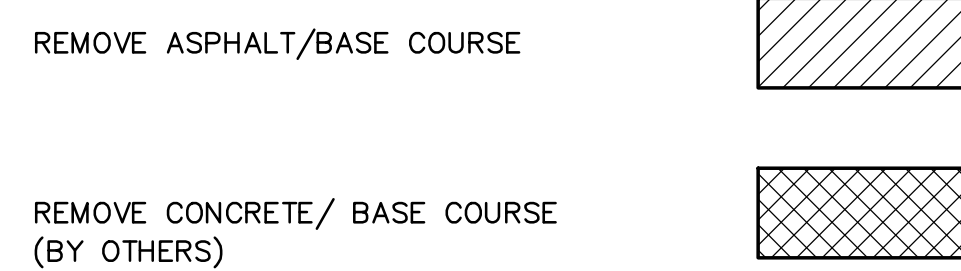
**KEYNOTES:**

- 1 REMOVE/GRUB TREE
- 2 REMOVE/EXPORT TOPSOIL/SUBGRADE MATERIAL AS REQUIRED FOR THE INSTALLATION OF SYNTHETIC TURF FIELD WITH DRAINAGE STONE.
- 3 SAWCUT 2" OF ASPHALT EDGE
- 3A SAWCUT/REMOVE/REPLACE ASPHALT AS PART OF STORM SEWER INSTALLATION
- 4 MAINTAIN UTILITIES
- 5 REMOVAL OF PLAYGROUND EQUIPMENT BY OWNER
- 6 REMOVE FENCE/GATE - ALTERNATE #1 (BY OTHERS)
- 7 FENCE REMOVAL LIMITS
- 7A REMOVE/REPLACE FENCE AS REQUIRED FOR CONSTRUCTION ACCESS AND STORM PIPE INSTALLATION (BY OTHERS)
- 8 SAWCUT CONCRETE (BY OTHERS)
- 9 REMOVE/REPLACE CURB AND GUTTER AS REQUIRED FOR STORM SEWER INSTALLATION (BY OTHERS)
- 10 REMOVE AND REPLACE STREET SIGN (BY OTHERS)
- 11 MAINTAIN WATER FOUNTAIN

**GENERAL NOTES:**

1. CONTACT DIGGER'S HOTLINE 5 WORKING DAYS PRIOR TO THE START OF DEMOLITION/CONSTRUCTION.
2. ALL DEMOLITION MATERIALS SHALL BE REMOVED FROM THE SITE AND DISPOSED OF IN A LEGAL MANNER EXCEPT FOR THOSE ITEMS NOTED TO BE SALVAGED, WHICH SHOULD BE TURNED OVER TO THE OWNER.
3. INSTALL ALL REQUIRED EROSION CONTROL MEASURES FOR PERIMETER PROTECTION PRIOR TO THE START OF DEMOLITION/CONSTRUCTION. SEE SHEET C4.0 FOR REQUIRED EROSION CONTROL MEASURES.
4. ALL BIDDERS PLANNING ON SUBMITTING A BID SHALL VISIT THE SITE AND REVIEW THE EXISTING CONDITIONS PRIOR TO THE BID DATE.
5. COORDINATE WITH THE OWNER AND LOCAL UTILITY COMPANIES TO LOCATE ANY EXISTING PRIVATE UTILITIES ON SITE PRIOR TO THE START OF WORK.
6. VERIFY THE LOCATION OF ALL EXISTING UTILITIES PRIOR TO THE START OF WORK/EXPORT.
7. STRIP TOPSOIL WITHIN THE PROJECT LIMITS IN ACCORDANCE WITH THE PROJECT MANUAL SPECIFICATIONS.
8. PRIOR TO PERFORMING WORK WITHIN PUBLIC RIGHT OF WAYS, NOTIFY AND COORDINATE WORK WITH THE LOCAL MUNICIPALITY.
9. ALL CONTRACTORS SHALL KEEP CONSTRUCTION EQUIPMENT AND MATERIAL STORAGE ON SITE IN AREAS OUTSIDE THE GENERAL LIMITS OF EVERYDAY CONSTRUCTION.
10. PROJECT LIMITS LINE LOCATION IS APPROXIMATE AND SHOWN FOR REFERENCE ONLY. SEE PLANS AND SPECIFICATIONS FOR ALL ITEMS THAT ARE TO BE PART OF THE PROPOSED CONSTRUCTION.

**DEMOLITION LEGEND**



REVISIONS	
CHECKED:	DLP
DRAWN:	TDP
DATE:	4-20-17
PROJECT NO.:	17.016

**SITE DEMOLITION PLAN**

**LA CROSSE SCHOOL DISTRICT  
HAMILTON EARLY LEARNING CENTER  
CITY OF LA CROSSE  
LA CROSSE COUNTY, WISCONSIN**

Civil Engineering  
Land Surveying  
Landscape Architecture  
5709 Windy Drive, Suite D  
Stevens Point, WI 54482  
715.344.9999(PH) 715.344.9922(FX)



**C2.0**

POINT OF BEGINNING, INC. HOLDS THE RIGHTS TO COPYRIGHT IN AND TO THESE PRINTS, DRAWINGS AND DOCUMENTS. NO REPRODUCTION, COPYING, ALTERATION, MODIFICATION, USAGE, INCORPORATION INTO OTHER DOCUMENTS OR ASSIGNMENT OF THE SAME MAY OCCUR WITHOUT THE PRIOR WRITTEN PERMISSION OF POINT OF BEGINNING, INC.  
©2017 POINT OF BEGINNING, INC.



**KEYNOTES:**

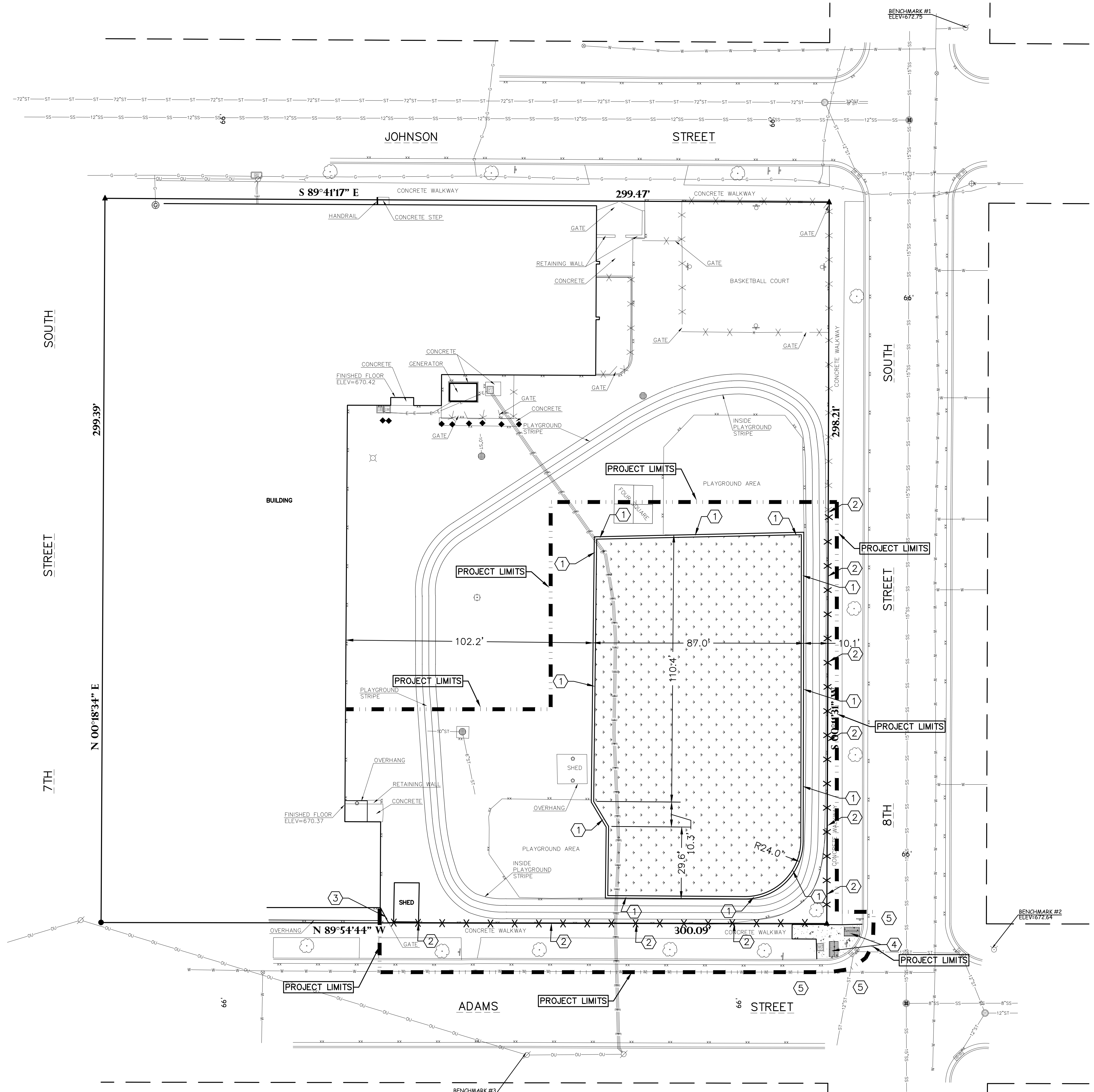
- ① 12"x12" CONCRETE CURB WITH 2"x4" TREATED WOOD NAILER. (BY OTHERS)
- ② 6" HIGH VINYL COATED FENCE (ALTERNATE #1) BY OTHERS
- ③ 7' WIDE GATE (ALTERNATE #1) BY OTHERS
- ④ INSTALL ADA RAMP (BY OTHERS)
- ⑤ PROVIDE TRAFFIC CONTROL BARRELS FOR STREET STORM SEWER CONNECTION

**GENERAL NOTES:**

1. CONTACT DIGGER'S HOTLINE 5 WORKING DAYS PRIOR TO THE START OF DEMOLITION/CONSTRUCTION.
2. ALL REQUIRED DIGGERS HOTLINE LOCATES AND PRIVATE UTILITY LOCATES SHALL BE ORDERED AND PAID FOR BY EACH CONTRACTOR REQUIRING THE LOCATE SERVICE.
3. COORDINATE WITH THE OWNER TO LOCATE ANY ON SITE PRIVATE UTILITIES 5 WORKING DAYS PRIOR TO THE START OF WORK.
4. PRIOR TO THE START OF WORK, INSTALL ALL REQUIRED PROTECTIVE EROSION CONTROL MEASURES.
5. ANY EXISTING UTILITIES NOT SHOWN ON THIS DOCUMENT WHICH NEED TO BE REMOVED, RELOCATED AND OR ADJUSTED SHALL BE COORDINATED WITH APPLICABLE UTILITY COMPANY.
6. ALL CONTRACTORS PLANNING ON SUBMITTING A BID SHALL VISIT THE SITE AND REVIEW THE EXISTING CONDITIONS PRIOR TO THE BID DATE.
7. ALL DIMENSIONS REFERENCED PARALLEL OR PERPENDICULAR TO PROPOSED ENTITIES SHOWN.

**SITE SURFACE LEGEND**

- SYNTHETIC TURF FIELD BY OTHERS
- 1.5" FINISH DRAINAGE STONE W/  
6" BASE DRAINAGE STONE  
(BY SITE DIVISION CONTRACTOR)
- PROPOSED 4" CONCRETE PAVEMENT (BY OTHERS)  
6" DENSE GRADED (BY SITE DIVISION CONTRACTOR)

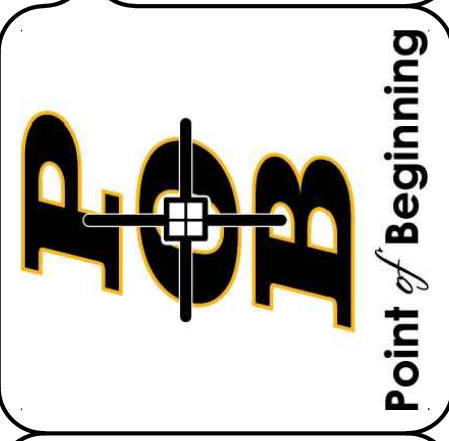


REVISIONS	
CHECKED:	DLP
DRAWN:	TDP
DATE:	4-20-17
PROJECT NO.:	17.016

**SITE LAYOUT PLAN**

**LA CROSSE SCHOOL DISTRICT  
HAMILTON EARLY LEARNING CENTER  
CITY OF LA CROSSE  
LA CROSSE COUNTY, WISCONSIN**

Civil Engineering  
Land Surveying  
Landscape Architecture  
5709 Windy Drive, Suite D  
Stevens Point, WI 54482  
715.344.9999(Ph) 715.344.9922(Fx)



**C3.0**

POINT OF BEGINNING, INC. HOLDS THE RIGHTS TO COPYRIGHT IN AND TO THESE PRINTS, DRAWINGS AND DOCUMENTS. NO REPRODUCTION, COPYING, ALTERATION, MODIFICATION, USAGE, INCORPORATION INTO OTHER DOCUMENTS OR ASSIGNMENT OF THE SAME MAY OCCUR WITHOUT THE PRIOR WRITTEN PERMISSION OF POINT OF BEGINNING, INC.  
©2017 POINT OF BEGINNING, INC.



**GENERAL NOTES:**

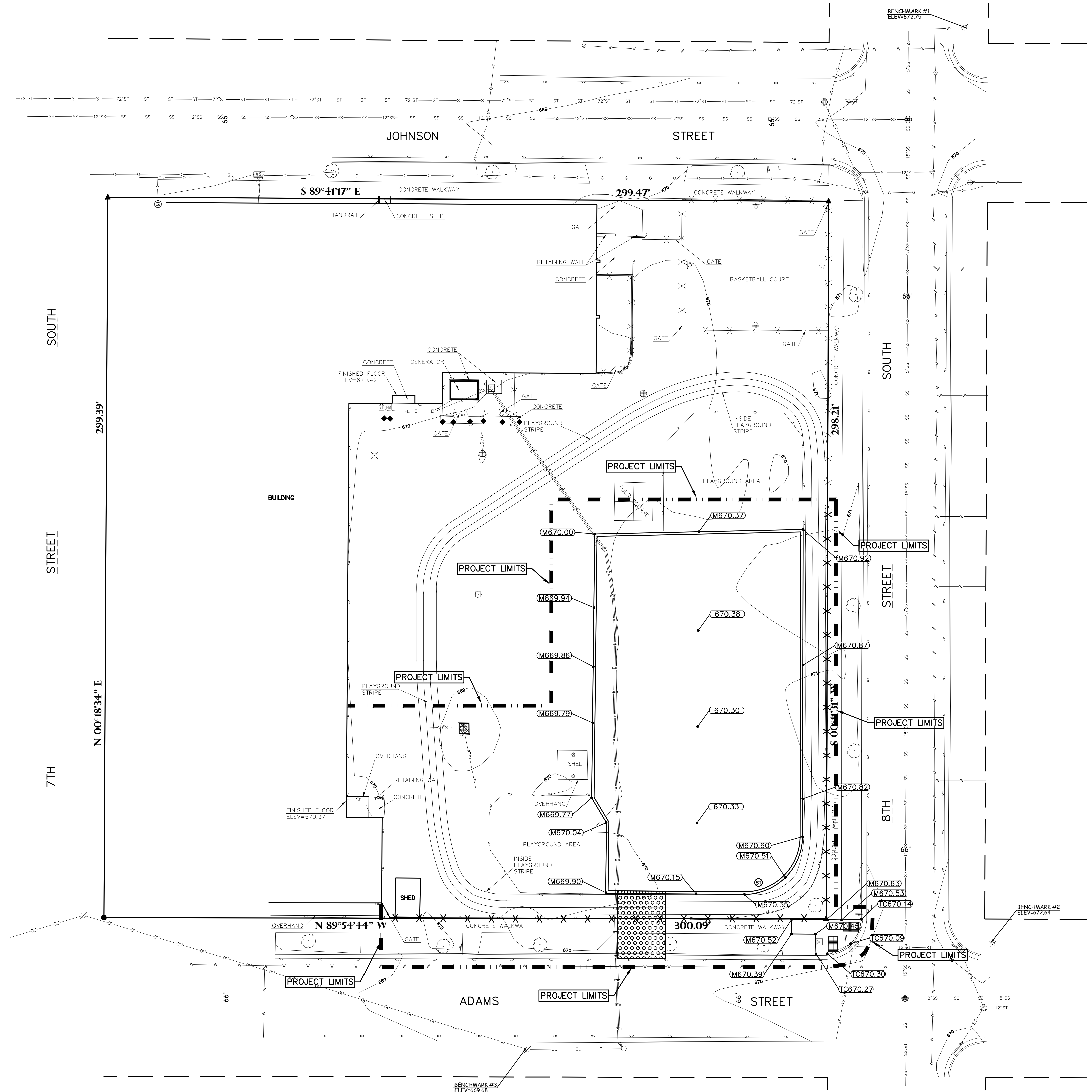
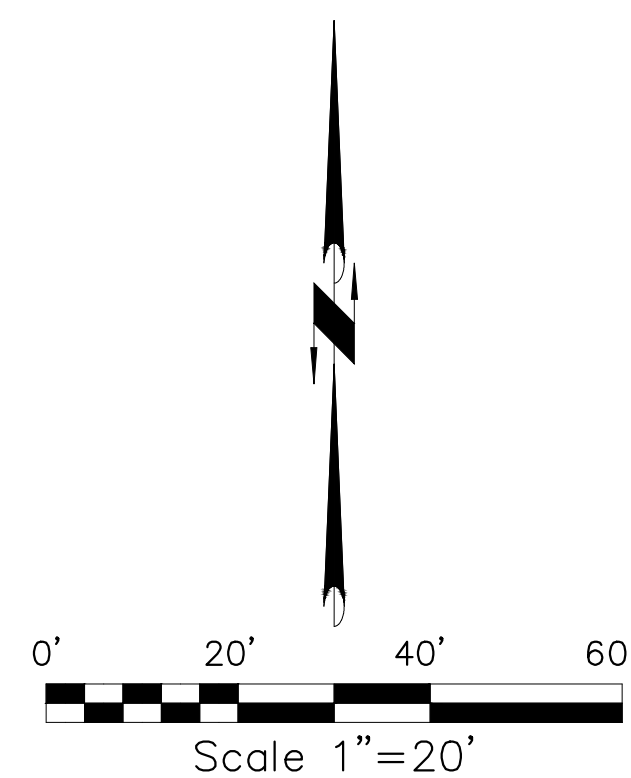
- CONTACT DIGGER'S HOTLINE 5 WORKING DAYS PRIOR TO THE START OF DEMOLITION/CONSTRUCTION.
- GRADE, LINE, AND LEVEL TO BE REVIEWED IN THE FIELD BY THE CONSTRUCTION MANAGER.
- INSTALL ALL REQUIRED EROSION CONTROL MEASURES IN ACCORDANCE WITH LOCAL AUTHORITIES AND THE DEPARTMENT OF NATURAL RESOURCES REGULATIONS.
- ALL EROSION CONTROL MEASURES SHALL BE MAINTAINED IN ACCORDANCE WITH THE DEPARTMENT OF NATURAL RESOURCES, LOCAL AUTHORITIES REGULATIONS.
- COORDINATE ALL EARTHWORK ACTIVITIES WITH GAS, ELECTRIC, (INCLUDING MAIN SERVICE, SITE LIGHTING, CONDUITS AND SIGNAGE) CABLE AND TELEPHONE CONSTRUCTION AND RESPECTIVE TRADES FOR THE INSTALLATION OF SAID UTILITIES.
- EXCESS TOPSOIL/ SUBGRADE MATERIAL SHALL BE REMOVED FROM SITE.
- ALL TESTING AND INSPECTION SHALL BE DONE IN ACCORDANCE WITH SPS 382.21.
- THE LOCAL MUNICIPALITY SHALL BE CONTACTED PRIOR TO ANY EXCAVATION IN THE PUBLIC RIGHT-OF-WAY. THE CONTRACTOR SHALL HAVE HIS TRAFFIC CONTROL PLAN APPROVED PRIOR TO WORK COMMENCING. THE LOCAL MUNICIPALITY SHALL OPERATE ALL EXISTING WATER VALVES IF NEEDED.

**GRADING LEGEND:**

- EXISTING CONTOUR 799
- MATCH EXISTING FINISH GRADE ELEVATION (FIELD VERIFY) 799.00
- PROPOSED SPOT ELEVATION 799.00
- PROPOSED STORM MANHOLE 3 C6.0
- ROCK CONSTRUCTION ENTRANCE REMOVE AFTER CONSTRUCTION, REPAIR/RESTORE ANY DAMAGED HARD SURFACE/GREEN TURF AREAS 8 C6.0
- PROPOSED INLET PROTECTION 7 C6.0

**EROSION CONTROL SEQUENCING**

- INSTALL EROSION CONTROL.
- BEGIN DEMOLITION
- BEGIN ROUGH GRADING AND UTILITY INSTALLATION



REVISIONS	
CHECKED:	DLP
DRAWN:	TDP
DATE:	4-20-17
PROJECT NO.:	17.016

**SITE GRADING PLAN**

**LA CROSSE SCHOOL DISTRICT  
HAMILTON EARLY LEARNING CENTER  
CITY OF LA CROSSE  
LA CROSSE COUNTY, WISCONSIN**

Civil Engineering  
Land Surveying  
Landscape Architecture  
5709 Windy Drive, Suite D  
Stevens Point, WI 54482  
715.344.9999(PH) 715.344.9922(FX)



**C4.0**

POINT OF BEGINNING, INC. HOLDS THE RIGHTS TO COPYRIGHT IN AND TO THESE PRINTS, DRAWINGS AND DOCUMENTS. NO REPRODUCTION, COPYING, ALTERATION, MODIFICATION, USAGE, INCORPORATION INTO OTHER DOCUMENTS OR ASSIGNMENT OF THE SAME MAY OCCUR WITHOUT THE PRIOR WRITTEN PERMISSION OF POINT OF BEGINNING, INC.  
©2017 POINT OF BEGINNING, INC.



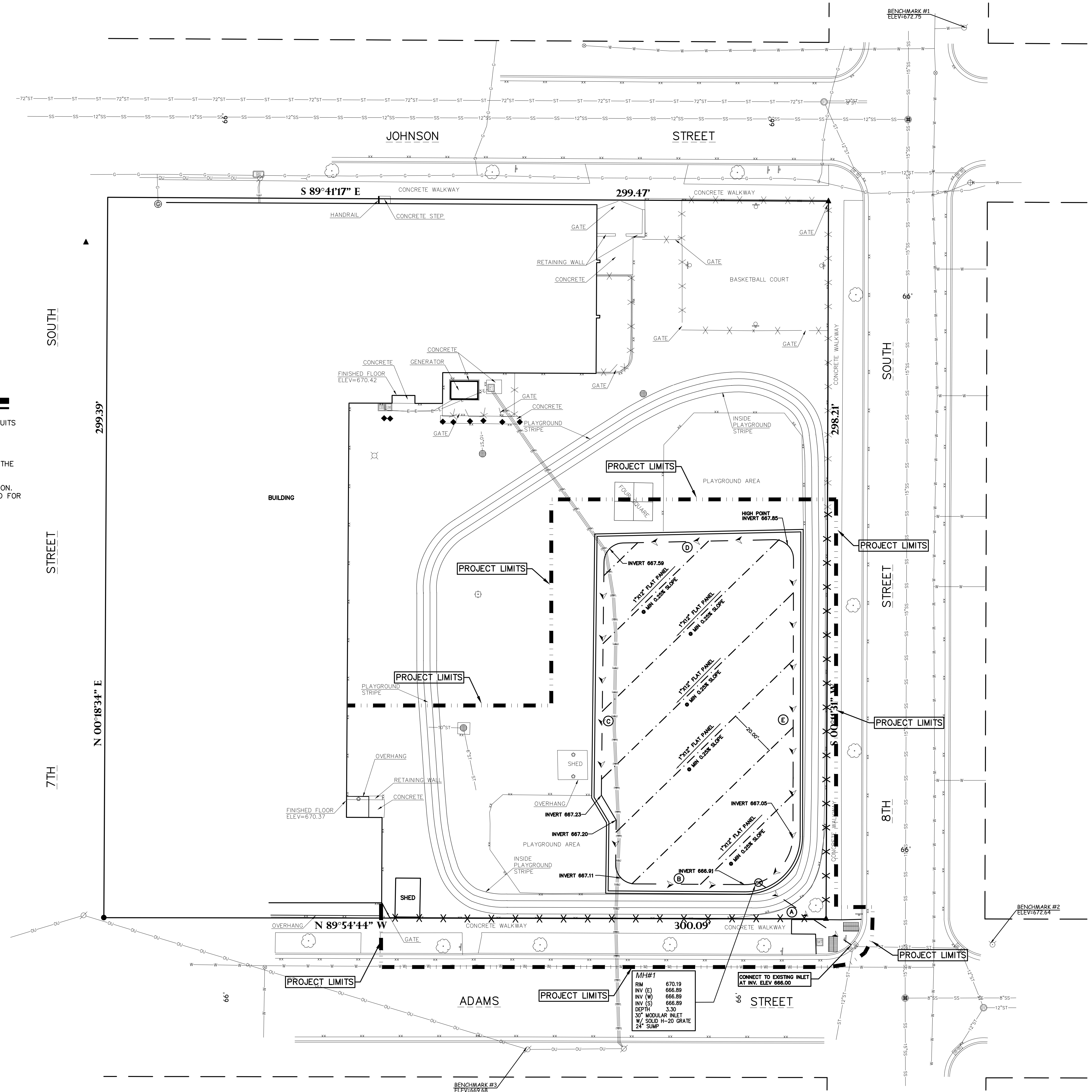
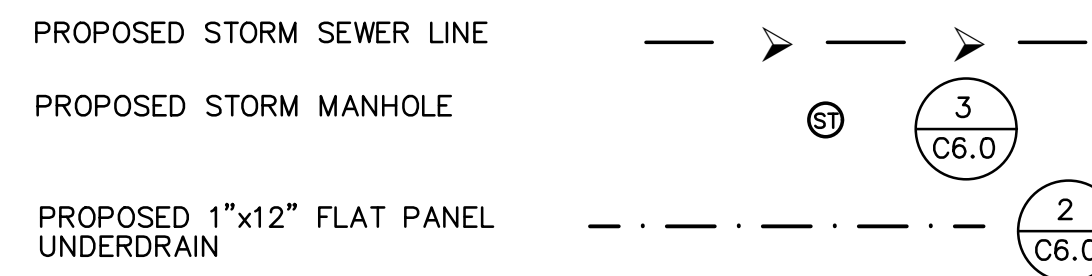
### STORM PIPE SCHEDULE

PIPE #	FROM STRUCTURE	TO STRUCTURE	LENGTH	SLOPE	PIPE SIZE	COMMENTS
A	MH#1	EXISTING INLET	47	1.89%	12"	SOLID WALL
B	SW BEND	MH#1	58	0.35%	12"	PERFORATED WALL
C	NW BEND	SW BEND	140	0.35%	12"	PERFORATED WALL
D	NE BEND	NW BEND	75	0.35%	12"	PERFORATED WALL
E	NE BEND	MH#1	147	0.65%	12"	PERFORATED WALL

### GENERAL NOTES:

- GRADE, LINE, AND LEVEL TO BE REVIEWED IN THE FIELD BY THE CONSTRUCTION MANAGER.
- COORDINATE ALL UTILITY WORK WITH GAS, ELECTRICAL, (INCLUDING MAIN SERVICE, SITE LIGHTING, CONDUITS AND SIGNAGE) CABLE AND TELEPHONE CONSTRUCTION AND RESPECTIVE TRADES RESPONSIBLE FOR INSTALLATION OF SAID UTILITIES.
- COORDINATE ALL WORK WITHIN THE PUBLIC RIGHT OF WAY WITH THE LOCAL MUNICIPALITY.
- ALL TESTING AND INSPECTION SHALL BE DONE IN ACCORDANCE WITH SPS 382.21.
- THE MUNICIPALITY SHALL BE CONTACTED PRIOR TO ANY EXCAVATION IN THE PUBLIC RIGHT-OF-WAY. THE CONTRACTOR SHALL HAVE HIS TRAFFIC CONTROL PLAN APPROVED PRIOR TO WORK COMMENCING. THE MUNICIPALITY SHALL OPERATE ALL EXISTING WATER VALVES IF NEEDED.
- FIELD VERIFY LOCATIONS AND ELEVATIONS OF ALL EXISTING UTILITY CONNECTIONS PRIOR TO INSTALLATION.
- ALL REQUIRED DIGGERS HOTLINE LOCATES AND PRIVATE UTILITY LOCATES SHALL BE ORDERED AND PAID FOR BY EACH CONTRACTOR REQUIRING THE LOCATE SERVICE.

### UTILITY LEGEND:



MH#1	RIM	INV (E)	INV (W)	INV (S)	DEPTH
	670.19	666.89	666.89	666.89	3.30

30" MODULAR INLET  
1" SOLID 14-20 GRATE  
24" SUMP

REVISIONS	
CHECKED:	DLP
DRAWN:	TDP
DATE:	4-20-17
PROJECT NO.:	17.016

**SITE STORM SEWER PLAN**

**LA CROSSE SCHOOL DISTRICT  
HAMILTON EARLY LEARNING CENTER  
CITY OF LA CROSSE  
LA CROSSE COUNTY, WISCONSIN**

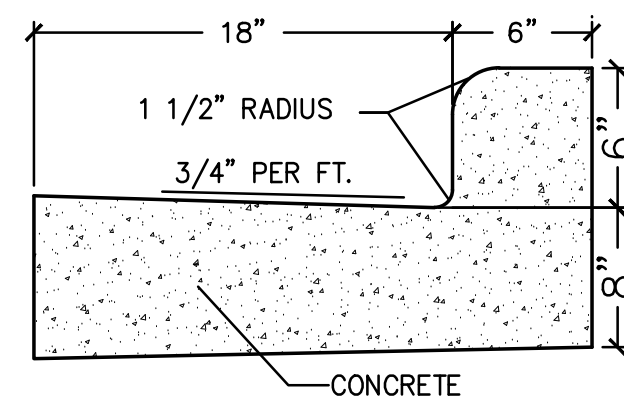
Civil Engineering  
Land Surveying  
Landscape Architecture  
5709 Windy Drive, Suite D  
Stevens Point, WI 54482  
715.344.9999(Ph) 715.344.9922(Fx)



**C5.0**

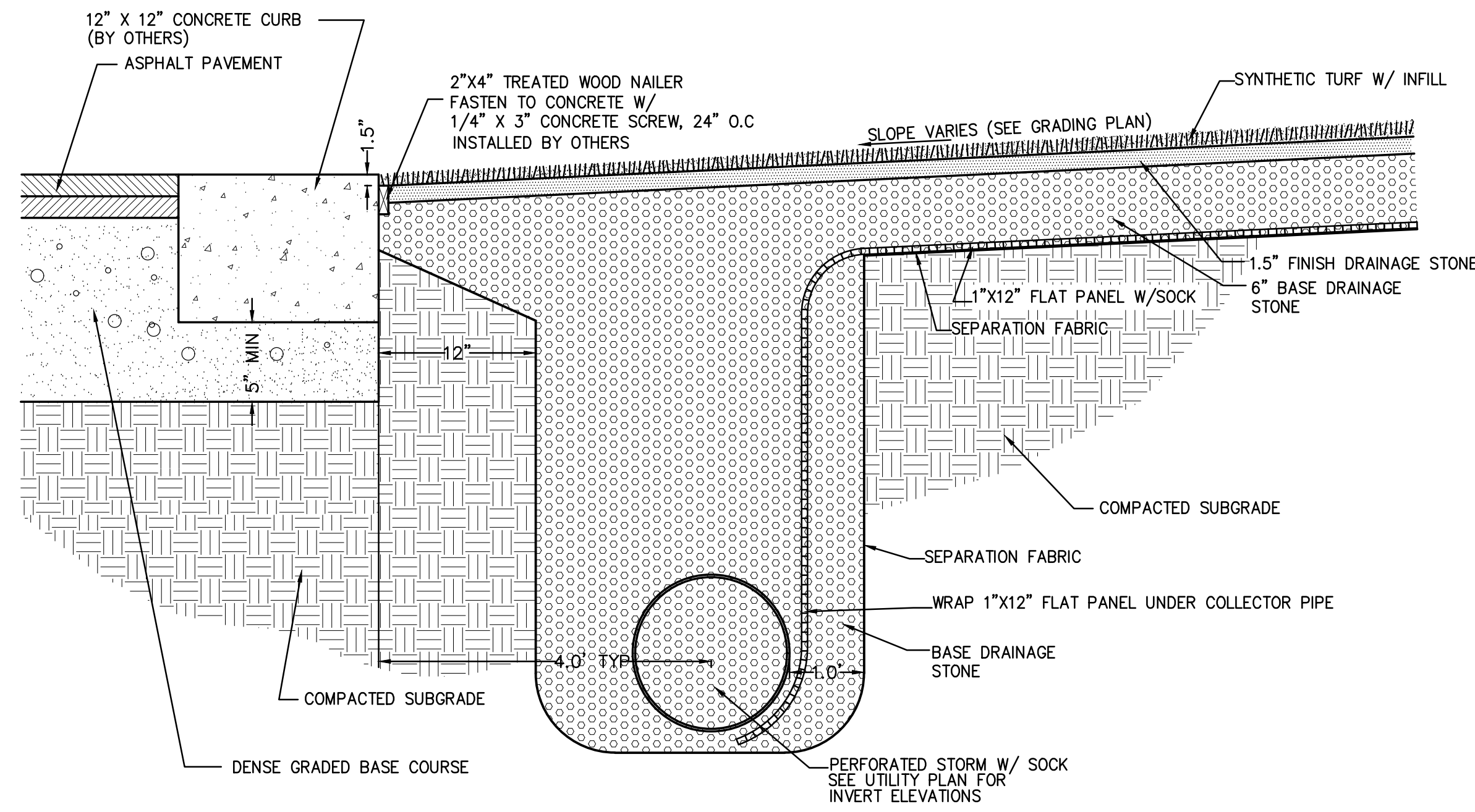
POINT OF BEGINNING, INC. HOLDS THE RIGHTS TO COPYRIGHT IN AND TO THESE PRINTS, DRAWINGS AND DOCUMENTS. NO REPRODUCTION, COPYING, ALTERATION, MODIFICATION, USAGE, INCORPORATION INTO OTHER DOCUMENTS OR ASSIGNMENT OF THE SAME MAY OCCUR WITHOUT THE PRIOR WRITTEN PERMISSION OF POINT OF BEGINNING, INC.  
©2017 POINT OF BEGINNING, INC.





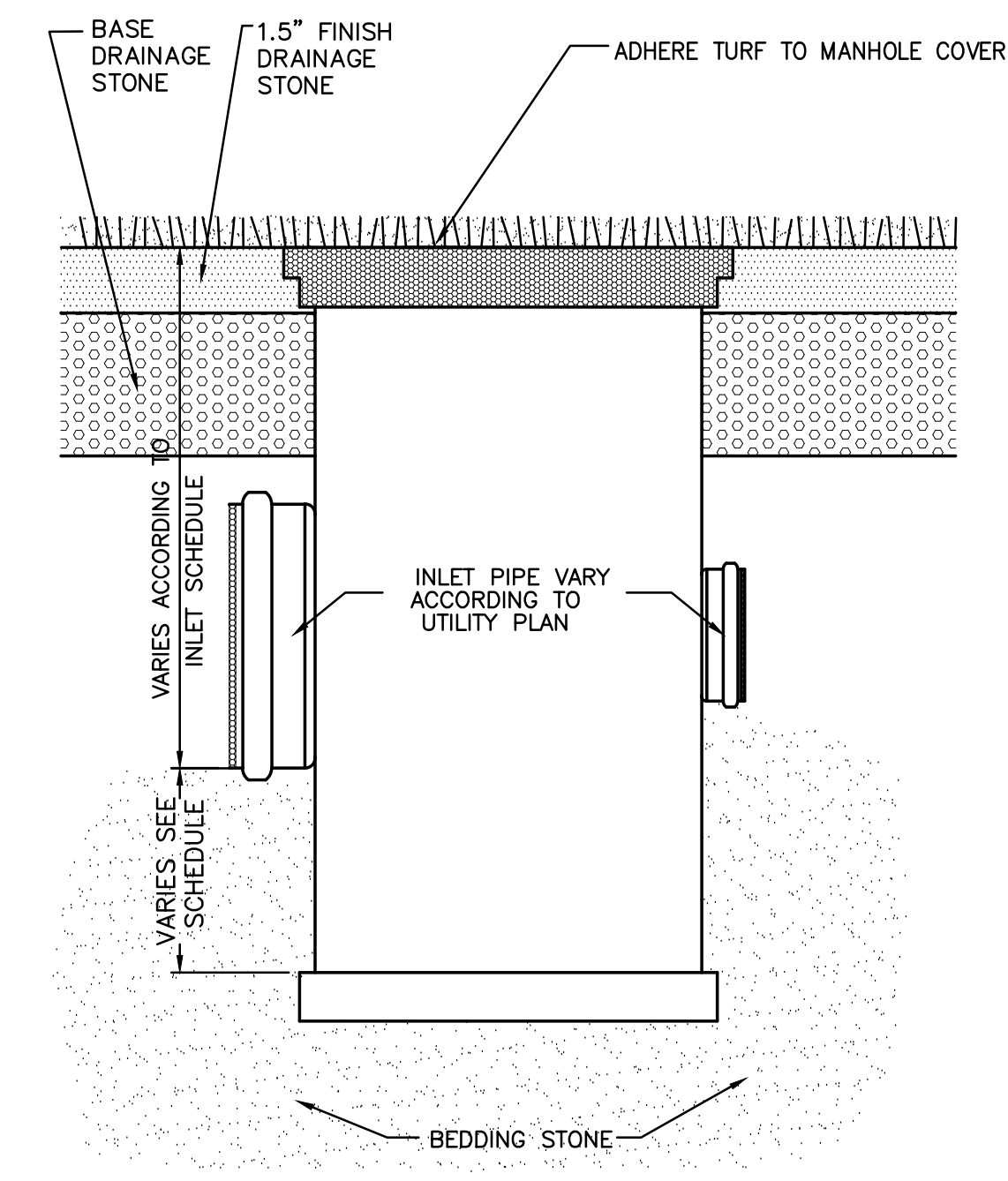
24" CURB AND GUTTER (BY OTHERS)

1  
C6.0



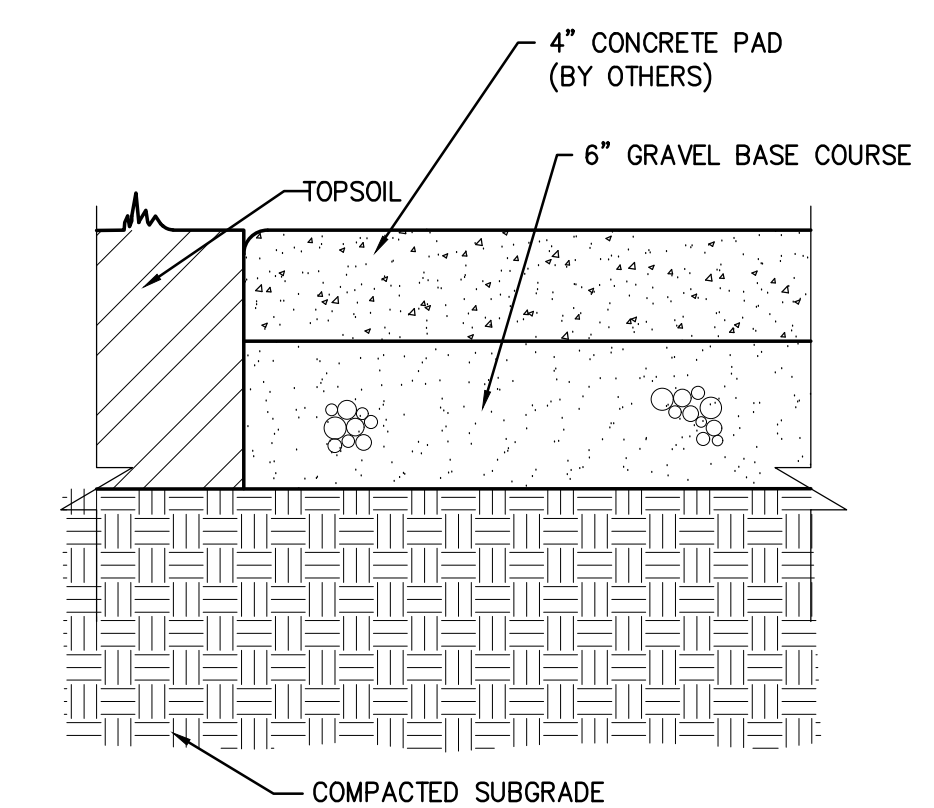
SYNTHETIC TURF SUB-DRAINAGE/ STORM DRAINAGE TURF CONNECTION

2  
C6.0



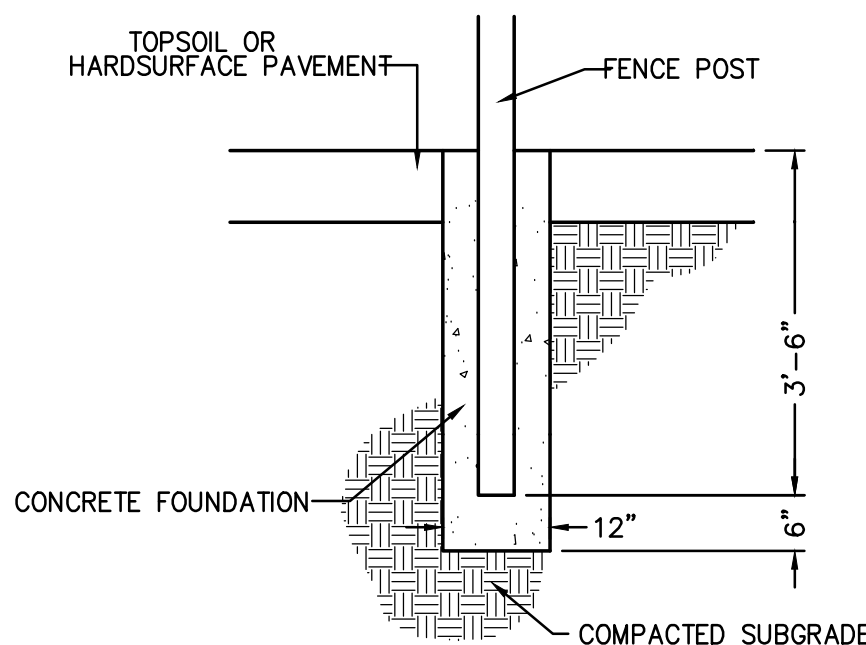
MODULAR DRAIN BASIN IN SYNTHETIC TURF AREAS

3  
C6.0



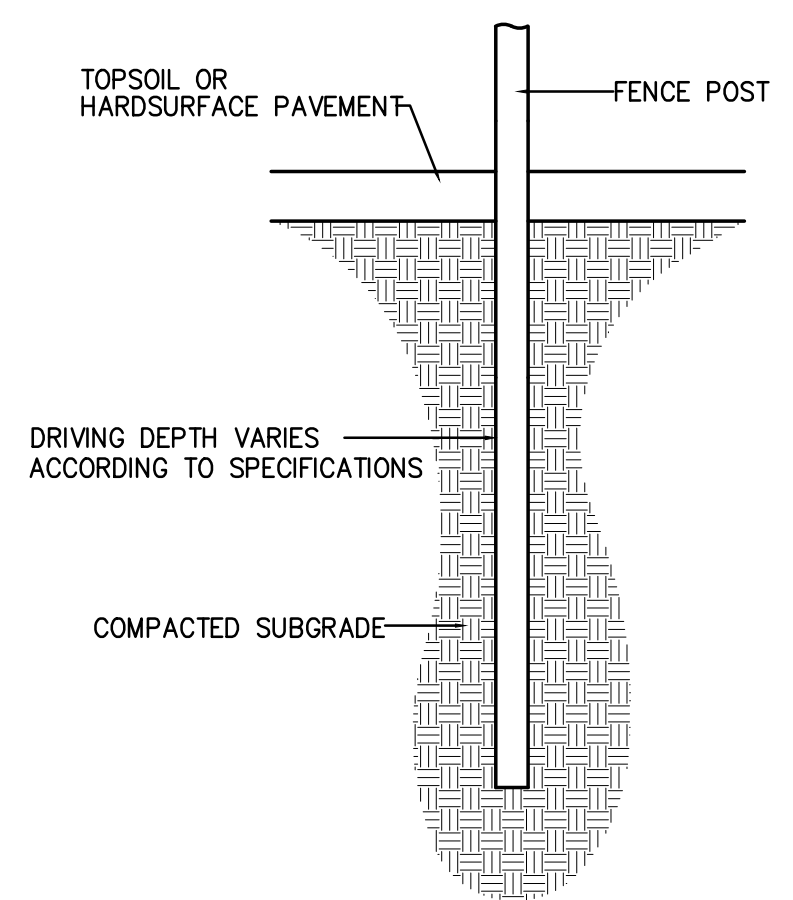
4" CONCRETE PAVEMENT (BY OTHERS) DENSE GRADED BASE (BY SITE DIVISION CONTRACTOR)

4  
C6.0



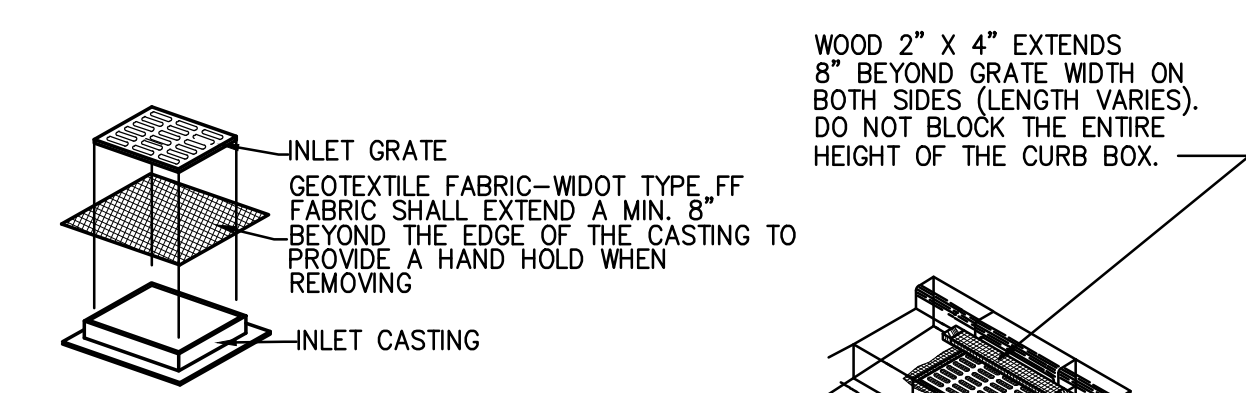
TERMINAL/ CORNER FENCE POST

5  
C6.0



DRIVEN LINE POST

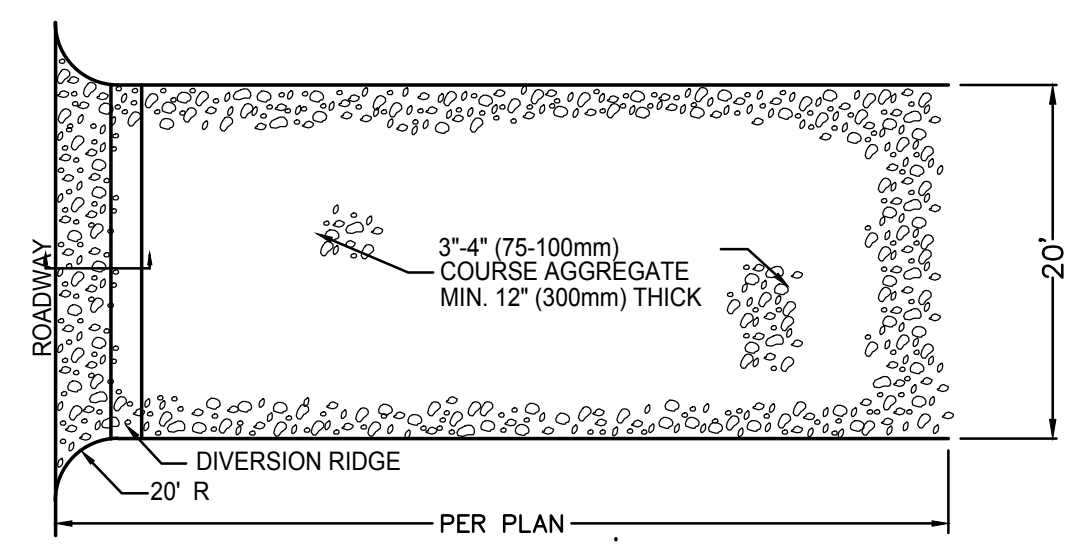
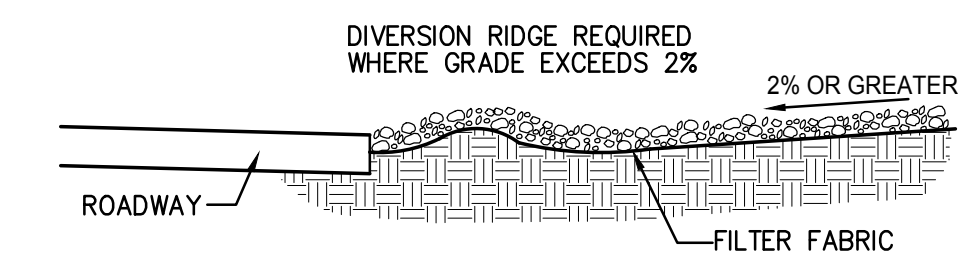
6  
C6.0



(WITHOUT CURB BOX)  
INSTALLATION:  
1. REMOVE INLET GRATE  
2. PLACE FABRIC OVER THE TOP OF THE CASTING  
MAINTENANCE:  
CLEAN AS NEEDED TO MAINTAIN FLOW. DO NOT CUT OR RIP FABRIC TO INCREASE FLOWS. USE OF FABRIC WILL CREATE SHORT TERM PONDING OF WATER. DO NOT USE FABRIC INLET PROTECTION IF ADJACENT BUILDINGS OR PROPERTIES MAY BE DAMAGED BY PONDING WATER. ELEVATIONS ON SITE SHALL BE SUCH THAT ANY PONDING WATER WILL HAVE AN EMERGENCY OVERFLOW POINT AWAY FROM AREAS THAT MAY BE DAMAGED BY FLOODING.  
GENERAL NOTES:  
USE ONLY THE FOLLOWING GEOTEXTILE FABRICS THAT ARE APPROVED BY THE WDOT FOR USE AS INLET PROTECTION: a) LINO INDUSTRIAL FABRICS - GTF 403 b) TC MIRAFI FILTERWEAVE 401. FOR INLET PROTECTION, TYPE C, WITH A CURB BOX, AN ADDITIONAL 18" OF FABRIC IS WRAPPED AROUND THE WOOD AND SECURED WITH STAPLES.  
INLET PROTECTION WITHIN THE PUBLIC ROADWAY SHOULD SET BELOW THE GRATE TO PREVENT DAMAGE FROM PLOWING OPERATIONS. THE CONTRACTOR IS RESPONSIBLE FOR REPAIRING ANY DAMAGE TO INLET PROTECTION AS A RESULT OF THE NORMAL PLOWING OPERATIONS WITHIN THE PUBLIC RIGHT OF WAY.

INLET PROTECTION

7  
C6.0



ROCK CONSTRUCTION ENTRANCE

8  
C6.0

NOTES:  
1. THE ENTRANCE SHALL BE MAINTAINED IN A CONDITION THAT WILL PREVENT TRACKING OR FLOWING OF SEDIMENT ONTO PUBLIC RIGHT-OF-WAYS. THIS MAY REQUIRE TOP DRESSING, REPAIR AND/OR CLEANOUT ANY MEASURES USED TO TRAP SEDIMENT.  
2. WHEN NECESSARY, WHEELS SHALL BE CLEANED PRIOR TO ENTRANCE ONTO PUBLIC RIGHT-OF-WAY.

REVISIONS	
CHECKED:	DLP
DRAWN:	TDP
DATE:	4-20-17
PROJECT NO.:	17.016

SITE DETAILS

LA CROSSE SCHOOL DISTRICT  
HAMILTON EARLY LEARNING CENTER  
CITY OF LA CROSSE  
LA CROSSE COUNTY, WISCONSIN

Civil Engineering  
Land Surveying  
Landscape Architecture  
5709 Windy Drive, Suite D  
Stevens Point, WI 54482  
715.344.9999(Ph) 715.344.9922(Fx)



C6.0