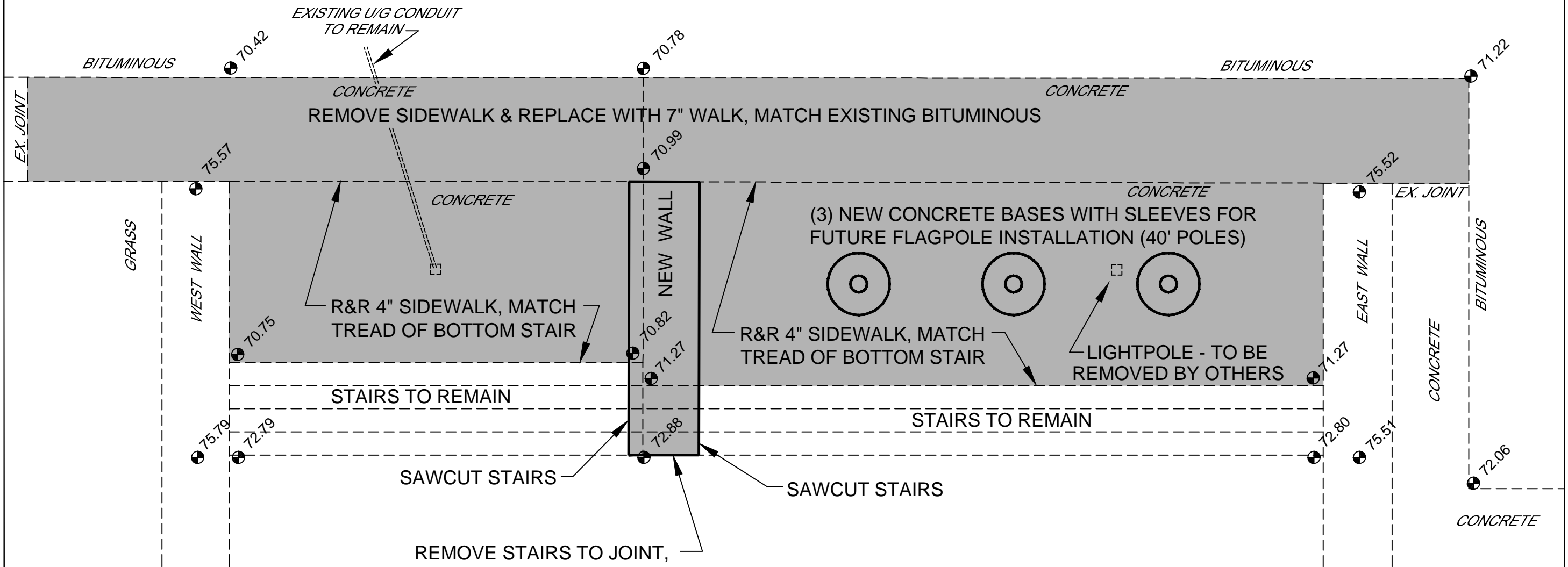
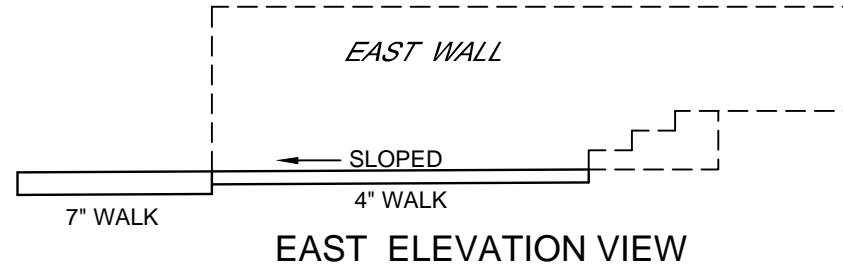
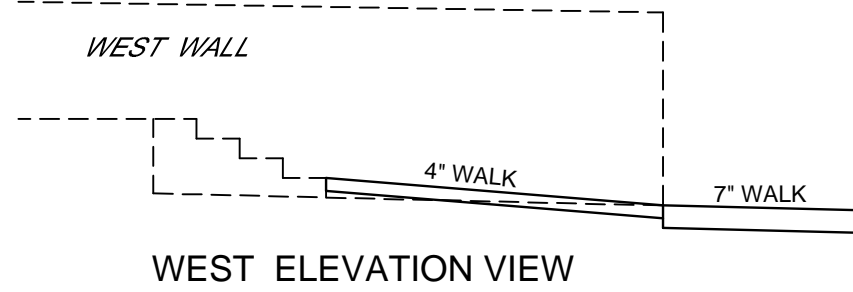
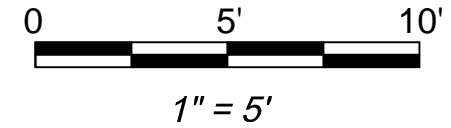


CITY HALL FLAGPOLE REPLACEMENT PROJECT - CONCRETE WORK



NEW CONCRETE WALL NOTES:

- MATCH HEIGHT & WIDTH OF EXISTING WALLS
- MATCH EXPOSED AGG. FINISH & NOTCH OF EX. WALLS
- POUR WALL AS MONOLITHIC BLOCK OR USE MIN. 6" WALL THICKNESS
- REINFORCING STEEL REQUIRED AS NEEDED

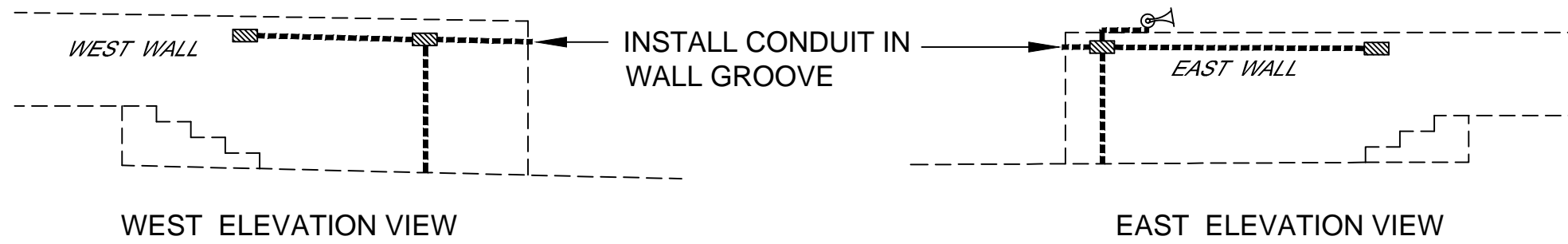
LEGEND

● ###.## = EXISTING ELEVATIONS

■ = REMOVALS

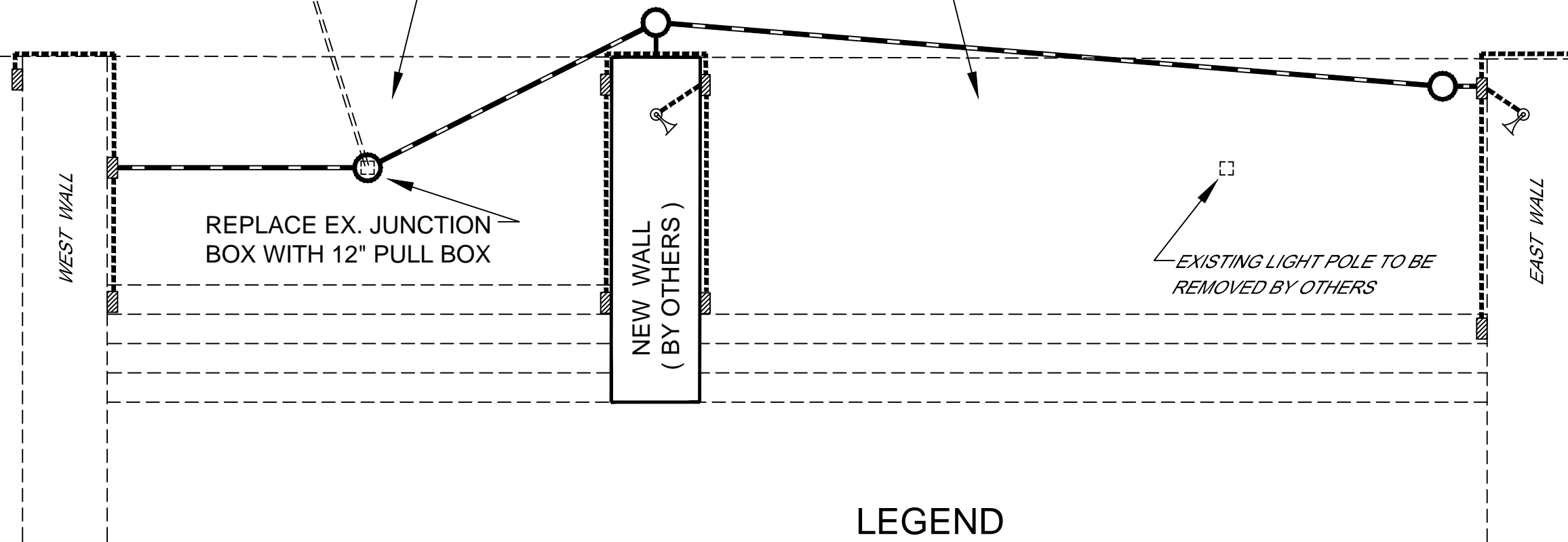
EDF #	12-035	DWG NAME:	FLAGPOLE RELOCATION PLAN.DWG
PROJECT No.	CITY HALL FLAGPOLE REPLACEMENT CONCRETE WORK		
LOCATION			
RESOLUTION	DATE		
ENGINEERING DEPT. City of La Crosse, Wis.			
FIELD BOOK	SURVEYED	BY	DATE
NUMBER	DRAWN	PRELIMINARY	JJC 8/2014
PAGE	CHECKED	FINAL	JJC 8/2014
	APPROVED		
	REVISIONS		
SHEET NO.	1	TOTAL SHEETS	2

CITY HALL FLAGPOLE REPLACEMENT PROJECT - ELECTRICAL WORK



EXISTING U/G CONDUIT TO REMAIN
EX. POWER SUPPLY CABLE TO REMAIN
UP TO JCT. BOX.

EXISTING CONCRETE TO BE REMOVED BY OTHERS



LEGEND

- = NEW 1/2" RIGID METALLIC CONDUIT
- = NEW 1 1/4" PVC CONDUIT, SCHEDULE 40
- ▨ = NEW LIGHT FIXTURE
- = NEW 12" PULL BOX
- ⦿ = NEW FLOODLIGHT FIXTURE

NOTES:

- LIGHT FIXTURES TO BE PROVIDED BY CITY
- NEW POWER SUPPLY CABLES FROM JCT. BOX TO FIXTURES TO BE PROVIDED BY CONTRACTOR
- EXISTING CIRCUIT BREAKERS AMPS UNKNOWN, VOLTAGES 277 / 480

EDF # 12-035		DWG NAME: FLAGPOLE RELOCATION PLAN.DWG	
PROJECT No.	CITY HALL FLAGPOLE REPLACEMENT ELECTRICAL WORK		
LOCATION			
RESOLUTION	DATE		
ENGINEERING DEPT. City of La Crosse, Wis.			
FIELD BOOK	SURVEYED	BY JJC	DATE 8/20/14
NUMBER	DRAWN	PRELIMINARY	
	CHECKED	FINAL	JJC 8/20/14
PAGE	APPROVED	BY BT	8/20/14
	REVISIONS		
SHEET NO.	2		TOTAL SHEETS 2