

**CITY OF LA CROSSE, WISCONSIN
CITY PLAN COMMISSION
REPORT
July 31, 2017**

➤ **AGENDA ITEM – 17-0966 (Andrea Schnick)**

Resolution Designating Proposed Amended Boundaries and Approving a Project Plan Amendment for Tax Incremental District No. 7, City of La Crosse, Wisconsin.

➤ **ROUTING:** JRB, EDC, F&P, Council

➤ **BACKGROUND INFORMATION:**

TID #7 is the Amtrak Depot TID. TID #7 has an expenditure period ending August, 2019 and a sunset date of 2024.

The amendment proposes a change to the boundary of this district to include a former PACAL building and nearby vacant land and removes several single families homes from the boundary to allow for more TID capacity.

The amendment also proposes use of TIF as development incentives in the ½ mile area. All use of TIF funds would go through the typical analysis, evaluation and approval process through the Economic Development Commission and the Common Council.

➤ **GENERAL LOCATION:**

Area within ½ miles of the Amtrak Depot.

➤ **RECOMMENDATION OF OTHER BOARDS AND COMMISSIONS:**

The Joint Review Board met 7/31 to review the plan and decide on a date for future consideration of the amendment. The next date will be set after confirming JRB members' availability in August.

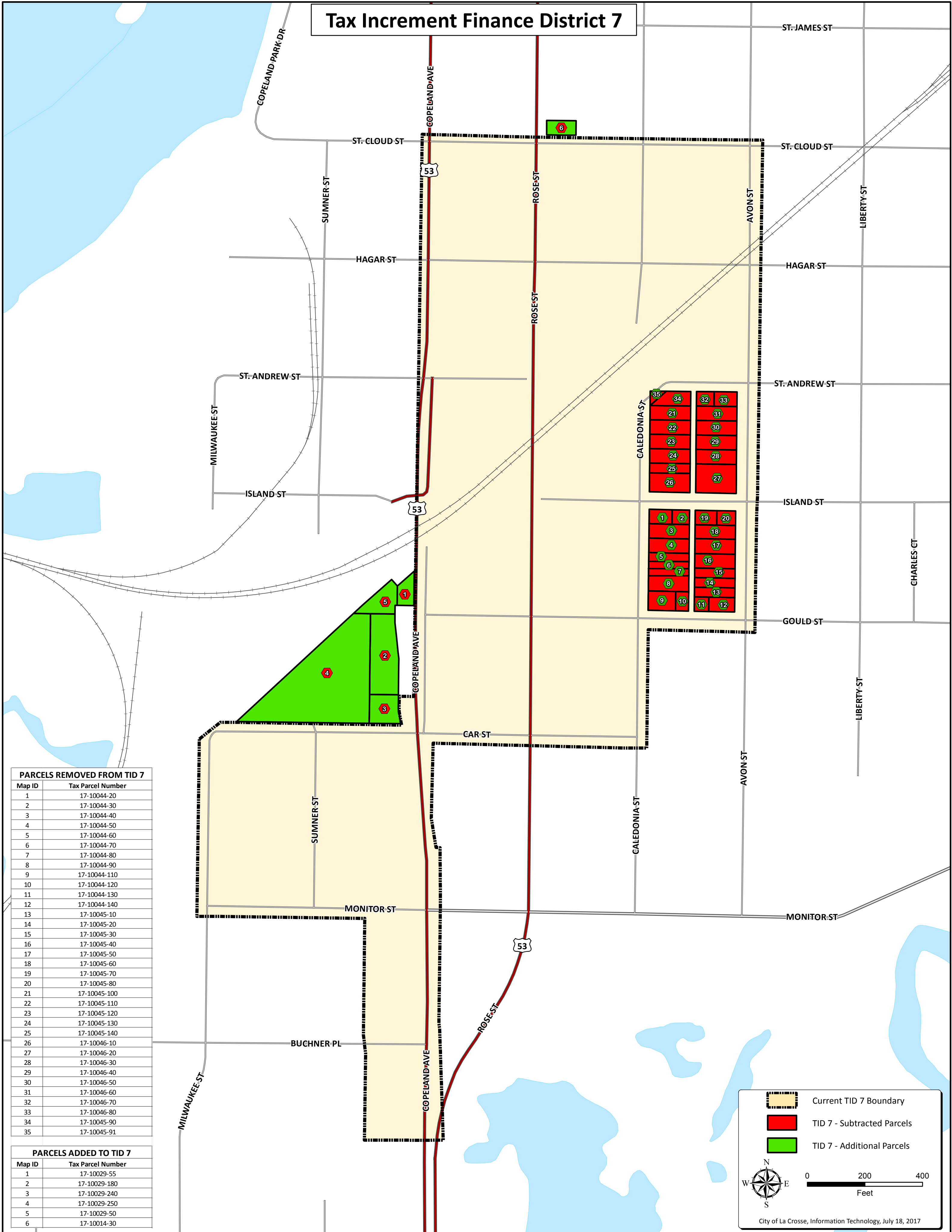
➤ **CONSISTENCY WITH ADOPTED COMPREHENSIVE PLAN:**

The Comprehensive Plan promotes the prudent use of Tax Incremental Financing for redevelopment.

➤ **PLANNING RECOMMENDATION:**

This resolution is recommended for approval subject to the public hearing outcome.

Tax Increment Finance District 7







PARCELS REMOVED FROM TID 7

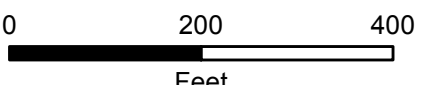
Map ID	Tax Parcel Number
1	17-10044-20
2	17-10044-30
3	17-10044-40
4	17-10044-50
5	17-10044-60
6	17-10044-70
7	17-10044-80
8	17-10044-90
9	17-10044-110
10	17-10044-120
11	17-10044-130
12	17-10044-140
13	17-10045-10
14	17-10045-20
15	17-10045-30
16	17-10045-40
17	17-10045-50
18	17-10045-60
19	17-10045-70
20	17-10045-80
21	17-10045-100
22	17-10045-110
23	17-10045-120
24	17-10045-130
25	17-10045-140
26	17-10046-10
27	17-10046-20
28	17-10046-30
29	17-10046-40
30	17-10046-50
31	17-10046-60
32	17-10046-70
33	17-10046-80
34	17-10046-90
35	17-10045-91

PARCELS ADDED TO TID 7

Map ID	Tax Parcel Number
1	17-10029-55
2	17-10029-180
3	17-10029-240
4	17-10029-250
5	17-10029-50
6	17-10014-30

 Current TID 7 Boundary
 TID 7 - Subtracted Parcels
 TID 7 - Additional Parcels



 0 200 400 Feet

City of La Crosse, Information Technology, July 18, 2017