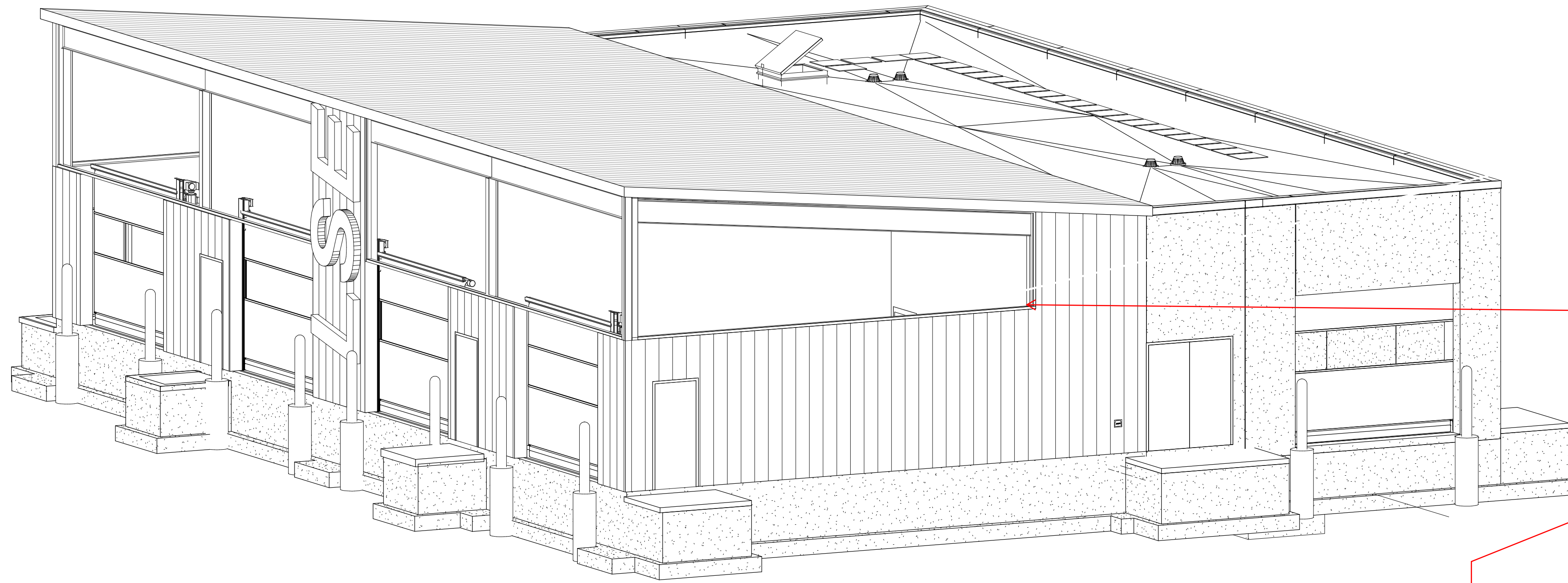




| WALL LEGEND | |
|-------------|---------------------------------|
| | EXISTING CONSTRUCTION TO REMAIN |
| | DEMOLITION |

| KEYNOTE LEGEND | |
|----------------|---------|
| | KEYNOTE |



1 VIEW FROM NORTH EAST

2-3/4" INSULATED TRANSLUCENT FIBERGLASS SANDWICH PANEL WALL SYSTEM (Structural 5' x 20') (Wall System)

DESIGN CONSIDERATIONS

- Structural steel/concrete/rough carpentry
- Masonry
- Flashing and Sheet metal
- Sealants
- Glazing

INSTALLATION

1. Factory prefabricated structural insulated translucent sandwich panels
2. Aluminum installation system
3. Aluminum sill flashing

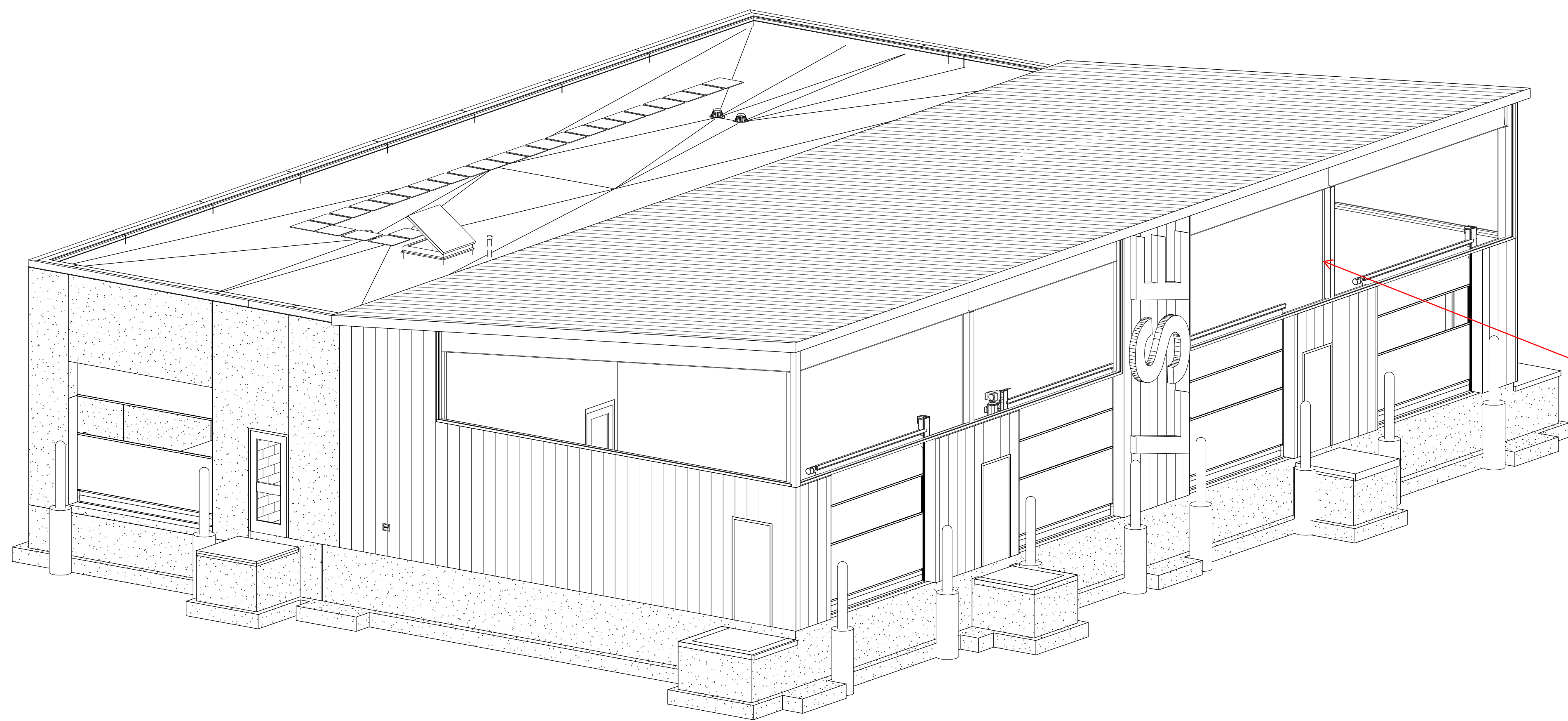
4) Customizable for desired head and still conditions.

DIMENSIONS

- a. Sandwich panels: 14" x 28" units
- b. Factory finished aluminum: 5" long sections

LAMINATE ADHESIVE

- Min. tensile strength of 750 PSI
- Min. Shear strength of teh panel adhesive by ASTM D 1002 after exposure to four separate conditions
 - A) 50% Relative Humidity at 68 F : 540 PSI
 - B) 182 F: 100 PSI
 - C) Accelerated Aging by ASTM D 1037 at room temp: 800 PSI
 - D) Accelerated Aging by ASTM D 1037 at 182 F: 250 PSI



2 VIEW FROM NORTH EAST

2-3/4" INSULATED TRANSLUCENT FIBERGLASS SANDWICH PANEL UNIT WALL SYSTEM (Structural 5' x 20') (Wall System)

1. Flat factory prefabricated structural insulated translucent sandwich panels
2. Aluminum installation system
3. Aluminum sill flashing
4. Thermal break windows (Optional)
5. Screens (Optional)
6. Louvers (Optional)
7. Opaque panels (Optional)

DIMENSIONS

- a. Sandwich panels: 14" x 28" units
- b. Factory finished aluminum: 5" long sections

GRID PATTERN

- Nominal size is 12" x 24" vertically oriented along the panel length.
- Other common sizes- 8"x20" square patterns: "Tuckerman"

GLAZING

- Heavy commercial (HC2000) windows (Optional E-Series windows) shall be glazed with 1" double (triple) insulated glass.
- (Optional) 1" translucent panels with _____ U-factor and faces to match 2-3/4" translucent panels.
- U-value Options: 0.55/0.48/0.31

PANEL COMPONENTS

- a) Strength-Impact strength of the standard .070" thick exterior face is 70 ft. lbs.
 - The optional Hi-Impact face is 230 ft. lbs., which may be required in vandal-prone exposures among others. Hi-impact color in white only.
- b) Appearance Exterior Face Sheets-Standard exterior face is .070" thick and available in standard white or crystal, and optional Kal-Tints.
 - Optional Hi-Impact is .052" thick in white only.

NOTE: FACE COLOR AFFECTS SOLAR PROPERTIES.

- c) Appearance Interior Face Sheets-Standard interior faces, either flame spread, are .045" thick in white or crystal.
 - Optional Hi-Impact face is .052" thick in white only.

THIS DOCUMENT IS THE PROPERTY OF I & S GROUP, INC. AND MAY NOT BE USED, COPIED OR DUPLICATED WITHOUT PRIOR WRITTEN CONSENT.

PROJECT
LA CROSSE REGIONAL AIRPORT CAR WASH FACILITY

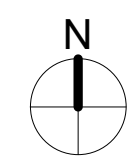
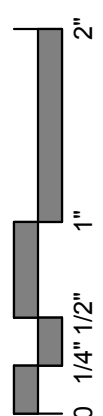
LACROSSE WISCONSIN

| REVISION SCHEDULE | | |
|-------------------|-------------|----|
| DATE | DESCRIPTION | BY |
| | | |
| | | |
| | | |
| | | |
| | | |

| | |
|---------------------|---------------------|
| PROJECT NO. | 18-21496 |
| FILE NAME | 21496 Arch R-18.rvt |
| DRAWN BY | SJR |
| DESIGNED BY | KMB |
| REVIEWED BY | KMB |
| ORIGINAL ISSUE DATE | |
| CLIENT PROJECT NO. | |

TITLE
3D VIEWS

SHEET
A1-11



PRELIMINARY NOT FOR CONSTRUCTION